



Installation Instructions

Part No. **2223** Product: Running Boards

Application: **Acura MDX 2022-Present**

Honda Pilot 2023-Present

Honda Passport 2026-Present

Level of Difficulty: 1 2 **3** 4 5

Professional Installation Time: 90 Min.

DIY Installation Time: 180 Min

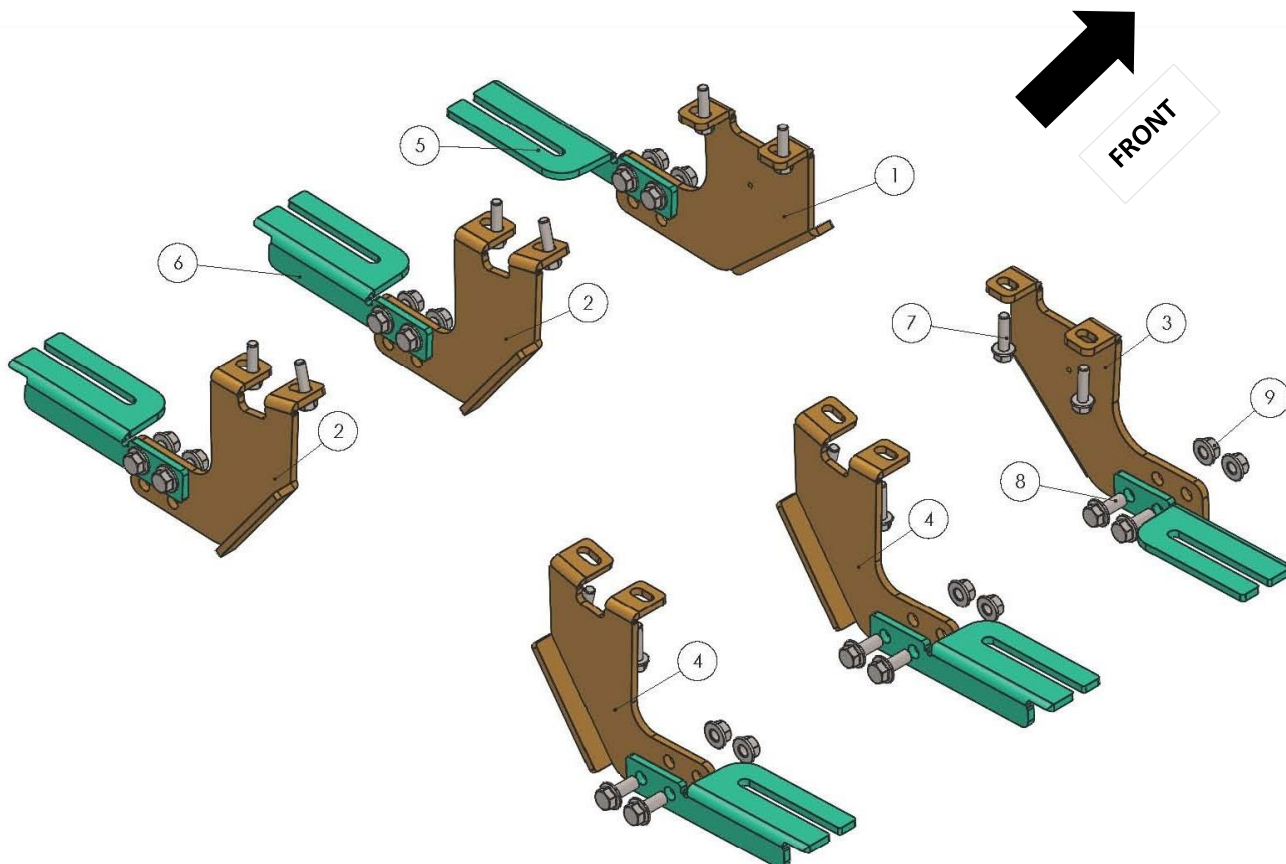
REV 2 09/10/25

Hardware	Torque Aluminum	Torque Steel to Steel
M6 Bolt	3 ft-lbs.	14 ft-lbs.
M8 Bolt	7 ft-lbs.	35 ft-lbs.
M10 Bolt	16 ft-lbs.	64 ft-lbs.
M12 Bolt	28 ft-lbs.	112 ft-lbs.

ATTENTION: Use correct torque settings to avoid damaging the running boards and or mounting brackets. Failure to do so will void your warranty. If you have any questions, please contact our technical team at 1-866-717-6645

Attention: Please make sure that you have the latest instructions
from *Romik.com*

QR Scan



2223

1



DRIVER SIDE
FRONT BRACKET-1
1 x QTY

2



DRIVER SIDE
CENTER-BACK BRACKET-1
2 x QTY

3



PASSENGER SIDE
FRONT BRACKET-1
1 x QTY

4



PASSENGER SIDE
CENTER-BACK BRACKET-1
2 x QTY

5



DRIVER/PASSENGER SIDE
F/C/B BRACKET-2
3 x QTY

6



DRIVER/PASSENGER SIDE
F/C/B BRACKET-2 (mirror)
3 x QTY

HARDWARE

7



M8x30
FLANGE BOLT
12x

8



M10x25
FLANGE BOLT
12x

9

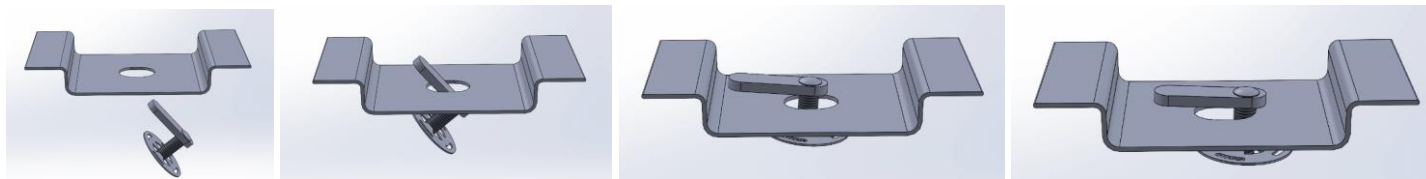


M10
FLANGE NUT
12x

Installation Instructions 2625 Bracket Kit

NOTE: Visible gap when doors are open. Undertray trimming required. Does not fit with mudflaps.

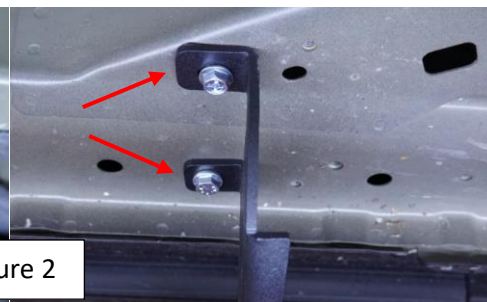
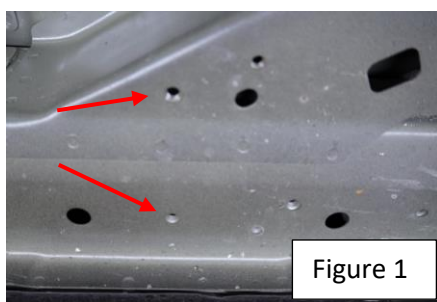
Important Install Tip: When installing Romik HTC inserts follow the sequence below. Make sure the HTC is seated correctly and do not use power tools as this will only spin the insert and possibly damage it. Test by tugging on it before installing bracket. Blue loctite is highly recommended on all metal parts.



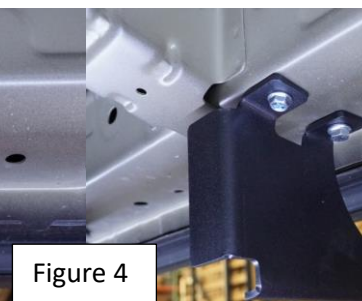
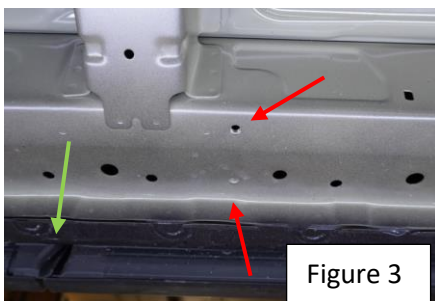
Step 1: Remove bottom plastic panels they will require trimming after completion. Do not discard hardware as it will be re-used.



Step 2: Locate the front bracket mounting location Figure 1. Using supplied M8 hardware install front bracket as shown in Figure 2. Attach F/C/B bracket using supplied M10 flange bolts and nuts. Do not tighten. Due to the different models choose either the high or low position to clear your factory cladding, most models will use the higher position so start here.



Step 3: Locate the middle bracket position, note green arrows show front door Figure 3. Install middle bracket using supplied M8 hardware Figure 4. Attach F/C/B bracket using supplied M10 flange bolts and nuts. Do not tighten.



Installation Instructions 2625 Bracket Kit

Step 4: Locate the rear bracket position Figure 5. Install rear bracket using supplied M8 hardware Figure 6. Attach F/C/B bracket using supplied M10 flange bolts and nuts. Do not tighten.



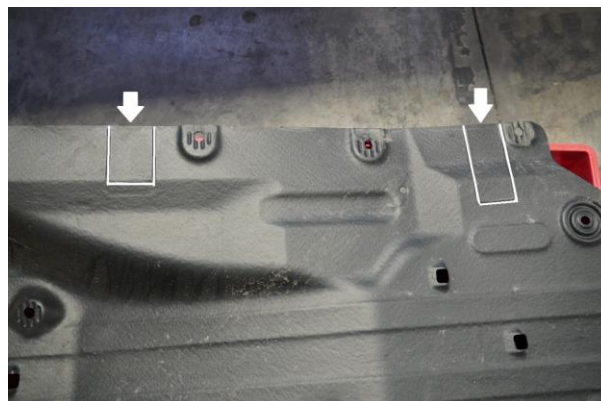
Figure 5



Figure 6

Step 6: Proceed to last page of this manual for running board install instructions and torque values

Step 7: Place undercarriage panel on a flat surface, NOTE the factory already scribes the panel so it is easy to cut. Re-install panel.



For Technical support please call our team at 1-866-717-6645 and one of our experts will assist you with this installation.

Thank you for choosing Romik.

Installation Instructions Running Boards

NOTE: Use of power tools will damage the bottom of the running board and void your warranty.

Step 1: loosen the M8 hardware on back of the running boards.

Step 2: Slide running board onto brackets

Step 3: Tighten hardware to 7 ft lbs.

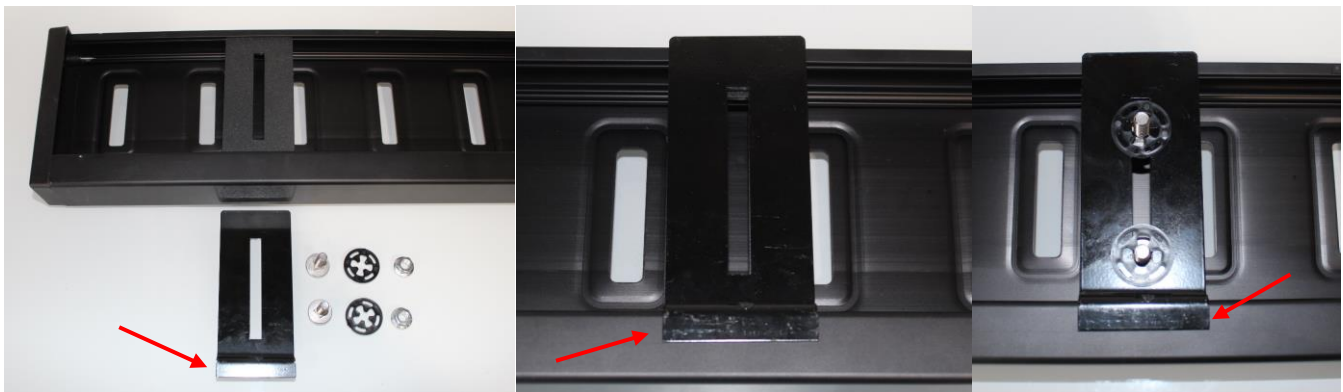


ROF/RPD/ROB Running boards

Step 1: Place clamping plate on top of running board as shown below. Make sure clamping plate sits correctly on running board surface.

Step 2: Install carriage bolts and plastic retaining clips as shown below.

Step 3: Install and tighten hardware to 7 ft lbs.



Product Registration and Warranty Information

- Register your Romik products at <https://romik.com/productregistration>
- Warranty information at <http://www.romik.com/warranty>



Cleaning and maintaining your Romik Running boards

Cleaning and maintaining your running boards is important, apply a light coat of a quality carnauba wax at least 2X per year. Wash often with mild soap and make sure to remove all soap residue. Many car automatic carwashes use a strong soap, make sure to use enough water to remove all residue.

For video instructions on how to clean your Romik products please click here <https://romik.com/cleaning>