



1-877-287-8634

INSTALLATION INSTRUCTIONS

IMPORTANT NOTICE: Be sure to inspect and test fit product before having it coated or painted. Ranch Hand will not be responsible for the cost of the coating if any problems with fit or finish are not noted and addressed beforehand.

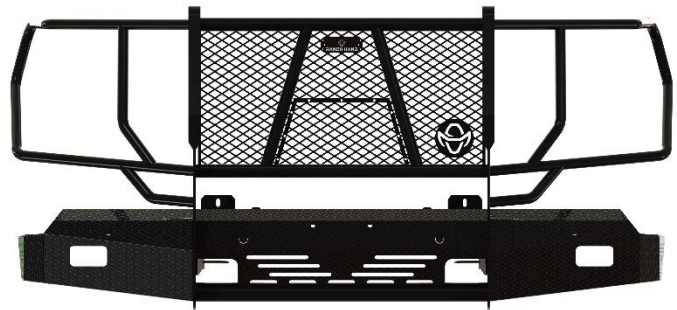
2022-up GMC 1500 SUMMIT BUMPER

PART # FSG22HBL1

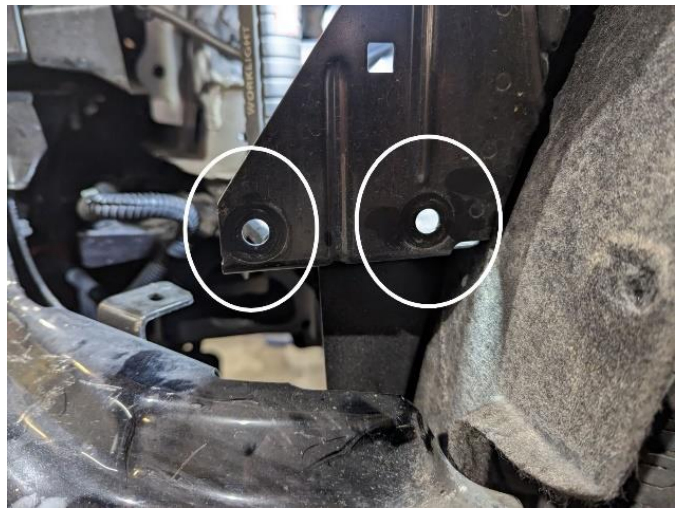
NOTE: WILL NOT FIT THE SIERRA LIMITED OR AT4X MODELS

TOOLS REQUIRED

- Ratchet and extension
- 7/16", 9/16", & 3/4" sockets and/or wrenches
- 10mm, 15mm & 18mm sockets and/or wrenches
- 5/32" Allen wrench
- T-15 Torx
- Flat and/or Phillips screwdriver
- Plastic panel pry tool



1. Remove the front inner fender well T-15 screws.
2. Remove the plastic fascia. Will need to pry the side of the fascia away from the side fender. There will be a couple lower clips and a couple clips on the head light. Made need to use pry tool.



3. The center of the fascia will have a few slide clips.
4. Open the hood and remove the hood latch by remove the two T-15 screws.

----- WARNING -----

Special care should be exercised in the handling, storage and installation of Ranch Hand equipment.

The actual weight of each piece of equipment will vary depending on style and model. The weight of the equipment is sufficient in volume to warrant special care, assistance and in some instances, the use of mechanical equipment during the transfer and installation of the equipment.

Do not assume a position directly under the equipment during installation. Be sure the equipment has been connected and stabilized during installation to prevent falling or shifting of positions.

Periodically check tightness of bolts to make sure they are tight, and unlikely to fail.

Rev. 2024



1-877-287-8634

INSTALLATION INSTRUCTIONS

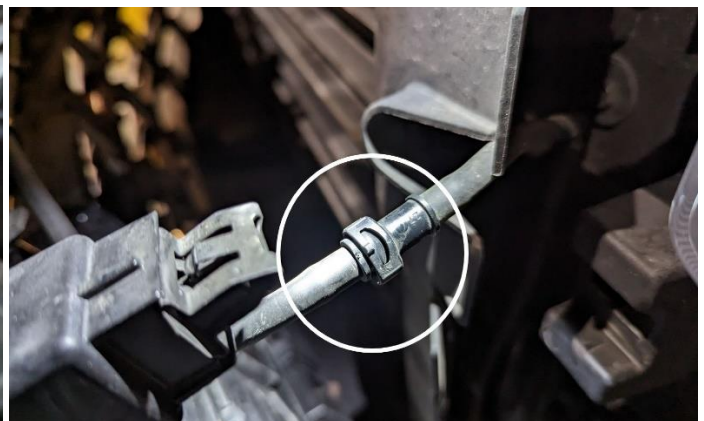
IMPORTANT NOTICE: Be sure to inspect and test fit product before having it coated or painted. Ranch Hand will not be responsible for the cost of the coating if any problems with fit or finish are not noted and addressed beforehand.



5. Remove the ten plastic clips holding the plastic shield located above the grille.



6. Remove the three 10mm bottom grille bolts.
7. Remove the top four 10mm grille bolts.
8. Remove the grille. If camera is present, unplug camera cable located on the passenger side of the grille. Also, if camera washer is present, unplug washer cable located on driver side of the grille.



9. Unplug main harness located on passenger side.

----- WARNING -----

Special care should be exercised in the handling, storage and installation of Ranch Hand equipment. The actual weight of each piece of equipment will vary depending on style and model. The weight of the equipment is sufficient in volume to warrant special care, assistance and in some instances, the use of mechanical equipment during the transfer and installation of the equipment. Do not assume a position directly under the equipment during installation. Be sure the equipment has been connected and stabilized during installation to prevent falling or shifting of positions. Periodically check tightness of bolts to make sure they are tight, and unlikely to fail.
Rev. 2024



1-877-287-8634

INSTALLATION INSTRUCTIONS

IMPORTANT NOTICE: Be sure to inspect and test fit product before having it coated or painted. Ranch Hand will not be responsible for the cost of the coating if any problems with fit or finish are not noted and addressed beforehand.



10. On diesels, unplug block heater plug on driver side.



11. Remove side bumper supports by remove three 15mm bolts (on each side).

12. Remove lower 10mm bumper bolts.

13. There will be a plastic shield covering the top and bottom bolts. Remove the shield by removing the push clips.



WARNING

Special care should be exercised in the handling, storage and installation of Ranch Hand equipment.

The actual weight of each piece of equipment will vary depending on style and model. The weight of the equipment is sufficient in volume to warrant special care, assistance and in some instances, the use of mechanical equipment during the transfer and installation of the equipment.

Do not assume a position directly under the equipment during installation. Be sure the equipment has been connected and stabilized during installation to prevent falling or shifting of positions.

Periodically check tightness of bolts to make sure they are tight, and unlikely to fail.

Rev. 2024



1-877-287-8634

INSTALLATION INSTRUCTIONS

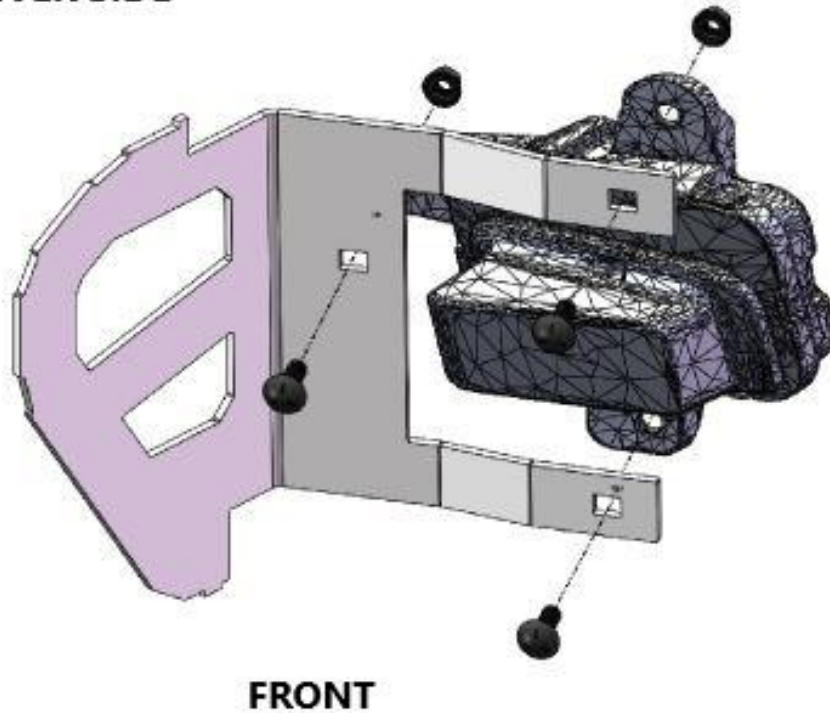
IMPORTANT NOTICE: Be sure to inspect and test fit product before having it coated or painted. Ranch Hand will not be responsible for the cost of the coating if any problems with fit or finish are not noted and addressed beforehand.

14. Remove the factory bumper by removing the two 18mm bolts from each side of the frame. They will be facing down.



15. Install the fog lights by using the 3/8" black carriage bolts and nuts.

DRIVER SIDE



16. Remove the louvered air duct that is mounted to the bumper frame plates.

17. Remove the bumper frame plates by removing the three 15mm bolts.

18. Remove the tow hooks. They will be reinstalled during the mounting of the mounting brackets.

WARNING

Special care should be exercised in the handling, storage and installation of Ranch Hand equipment. The actual weight of each piece of equipment will vary depending on style and model. The weight of the equipment is sufficient in volume to warrant special care, assistance and in some instances, the use of mechanical equipment during the transfer and installation of the equipment. Do not assume a position directly under the equipment during installation. Be sure the equipment has been connected and stabilized during installation to prevent falling or shifting of positions. Periodically check tightness of bolts to make sure they are tight, and unlikely to fail.
Rev. 2024

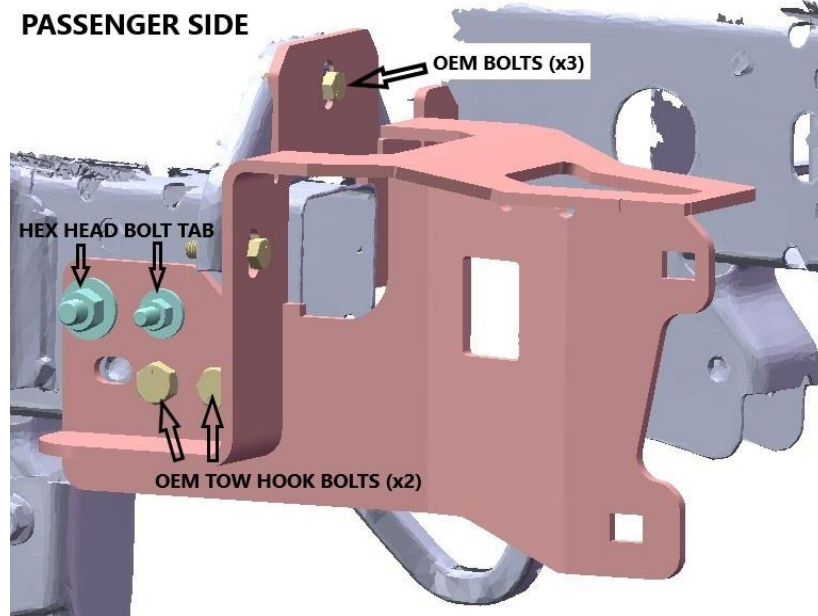


1-877-287-8634

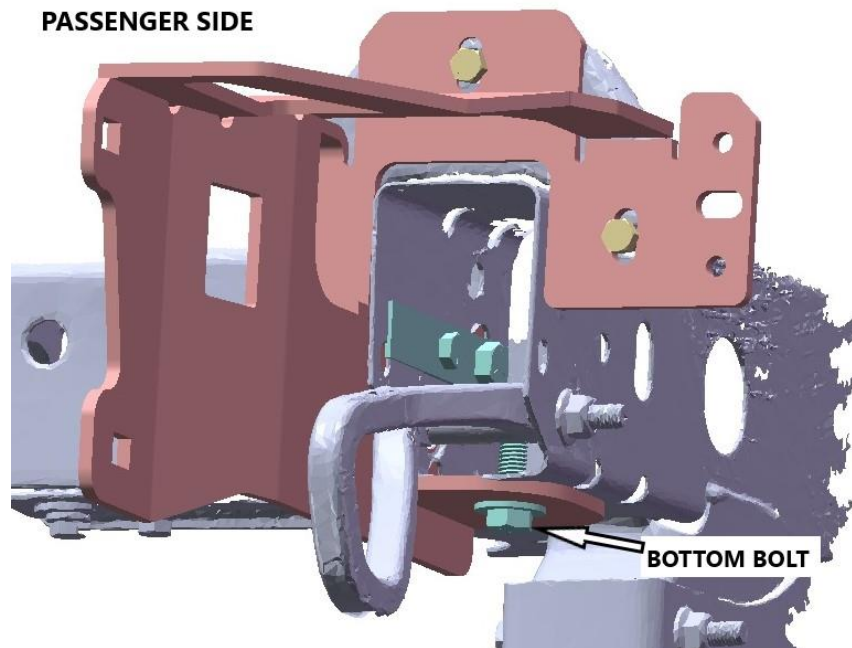
INSTALLATION INSTRUCTIONS

IMPORTANT NOTICE: Be sure to inspect and test fit product before having it coated or painted. Ranch Hand will not be responsible for the cost of the coating if any problems with fit or finish are not noted and addressed beforehand.

19. Install the mounting brackets. There will be a driver and passenger. You will reuse the three 15mm bolts. Use the provides hex head bolt tab for the upper two side bolt holes. The ½” bolt will be to the back. Reinstall the tow hook and reuse the tow hook bolts. If tow hooks are not present use ½” x 1 ½” bolts, washers, lock washers and nuts.



20. Use a ½” x 1 ½” bolt and hardware to install the bottom of the bracket to the frame.



WARNING

Special care should be exercised in the handling, storage and installation of Ranch Hand equipment. The actual weight of each piece of equipment will vary depending on style and model. The weight of the equipment is sufficient in volume to warrant special care, assistance and in some instances, the use of mechanical equipment during the transfer and installation of the equipment. Do not assume a position directly under the equipment during installation. Be sure the equipment has been connected and stabilized during installation to prevent falling or shifting of positions. Periodically check tightness of bolts to make sure they are tight, and unlikely to fail.
Rev. 2024

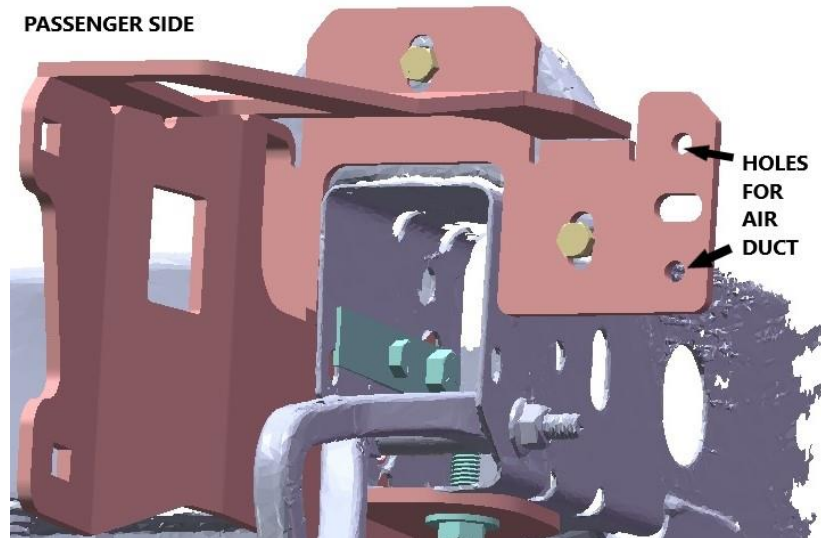


1-877-287-8634

INSTALLATION INSTRUCTIONS

IMPORTANT NOTICE: Be sure to inspect and test fit product before having it coated or painted. Ranch Hand will not be responsible for the cost of the coating if any problems with fit or finish are not noted and addressed beforehand.

21. Install the louvered air duct the inside holes of the mounting bracket. Use ¼" hardware to install.



22. Install the frontend to the mounting brackets. Use the ½" black carriage bolts, washers, lock washers and nuts to install.

23. Remove the sensor/fog light wiring harness from the factory bumper.

24. Push the rubber grommets into the holes in the frontend. Run the wiring harness threw the rectangle holes of the uprights. When installing sensors, use a little WD-40 in the grommet holes and around the sensors to help with install. Set the sensors at a 45-degree angle.

25. Plug in the sensor/fog light wiring harness.

MAKE SURE ALL BOLTS AND NUTS ARE TIGHT!

----- **WARNING** -----

Special care should be exercised in the handling, storage and installation of Ranch Hand equipment.

The actual weight of each piece of equipment will vary depending on style and model. The weight of the equipment is sufficient in volume to warrant special care, assistance and in some instances, the use of mechanical equipment during the transfer and installation of the equipment.

Do not assume a position directly under the equipment during installation. Be sure the equipment has been connected and stabilized during installation to prevent falling or shifting of positions.

Periodically check tightness of bolts to make sure they are tight, and unlikely to fail.

Rev. 2024