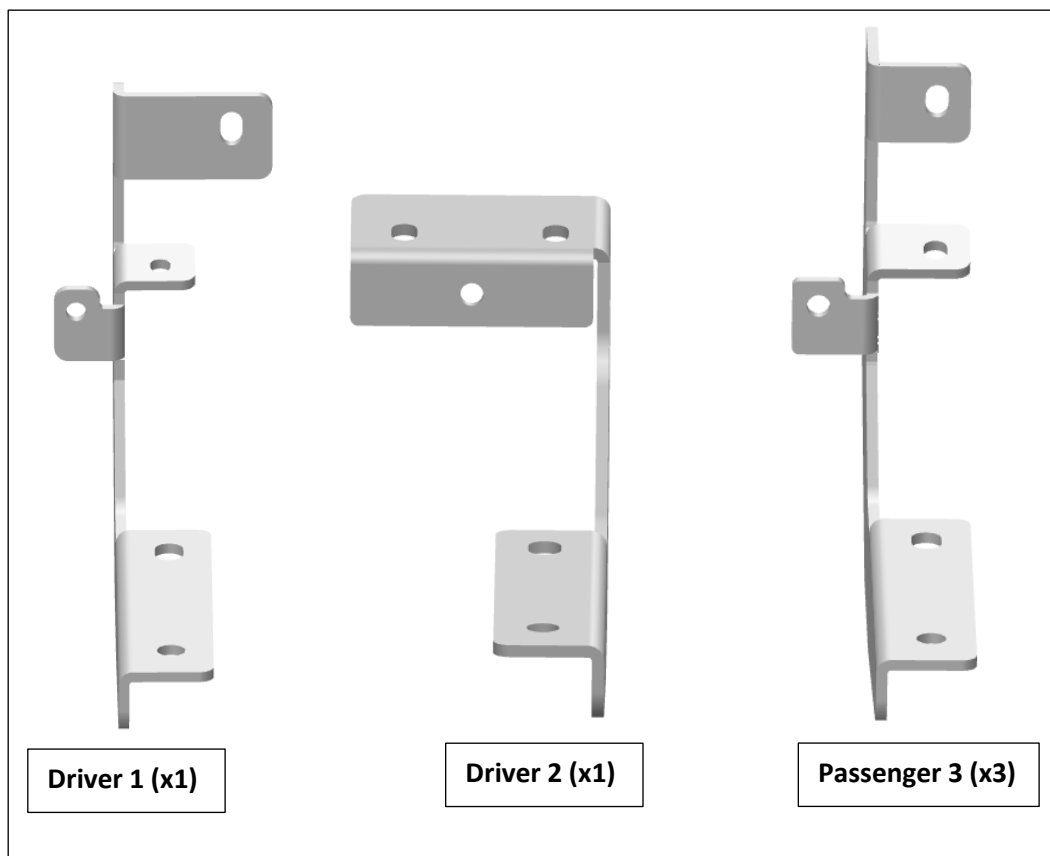


HARDWARE DESCRIPTION		QTY.
<b>HWKT-05814X</b>		
FLNT-00696X	M8-1.25 CLASS 8 SERRATED FLANGE NUT	4
FLHB-00688X	3/8"-16 X 1" GRADE 5 HEX SERRATED FLANGE BOLT	10
LCKW-00722X	M8 SPLIT LOCK WASHER	11
FLTW-00743X	M8 FLAT WASHER 1000B	11
HHTC-00001X	M8 X 20MM DIN 7513A THREAD CUTTING BOLT ZINC	11

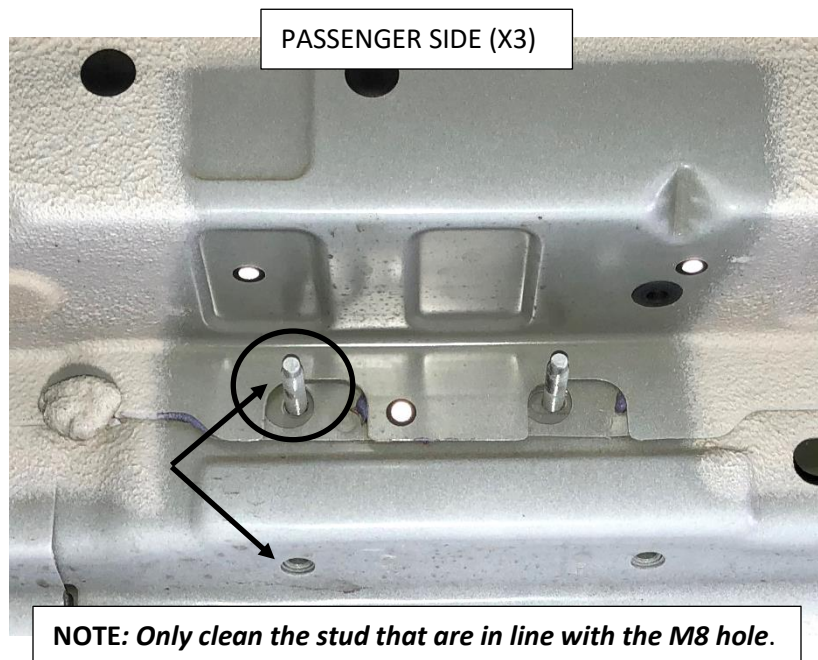
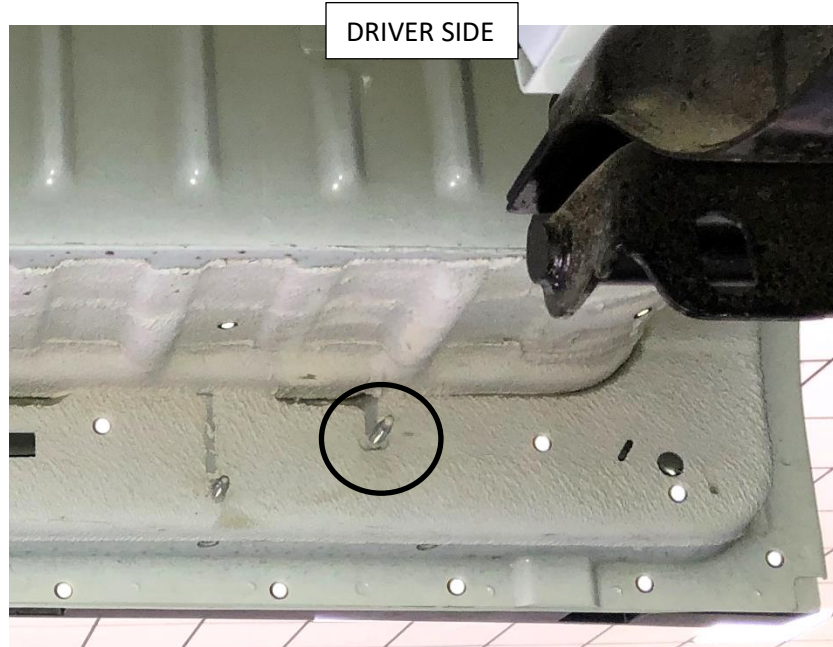
PARTS INCLUDED	QTY
31" Running board	1
85" Running board	1
Mounting brackets	5
Nut plate	5

#### Mounting Bracket Identifier



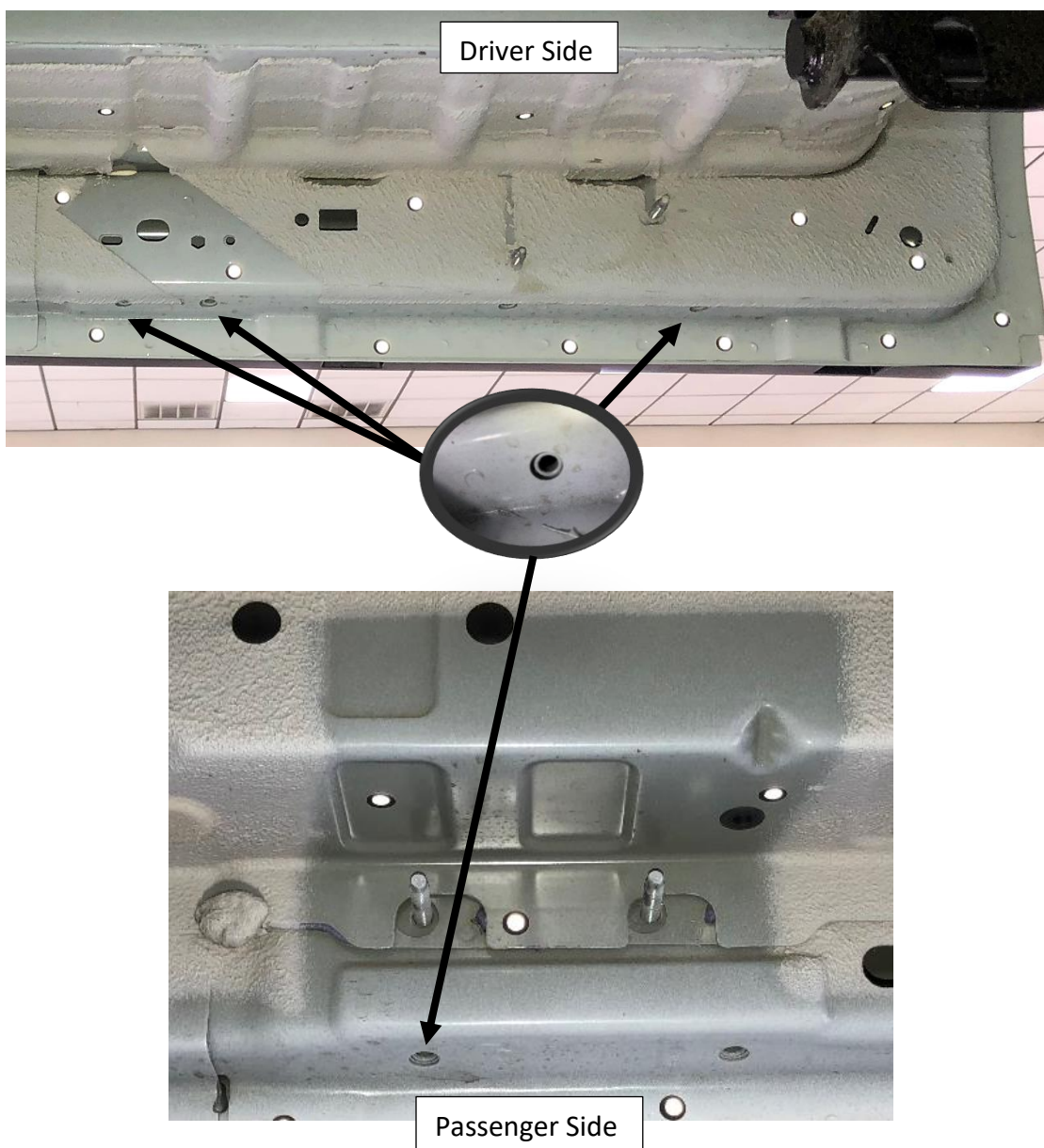
## Vehicle Prep

**Step 1:** Before the install, you will need to clean off the under coating on the factory threaded studs that will be used in the installation.



**NOTE:** Only clean the stud that are in line with the M8 hole.

**Step 2:** There are six factory M8 mounting holes that will need to be threaded. Three on the **driver side** and three on the passenger side. The three on the **passenger side** will be located directly under the M8 studs that were cleaned in the step 1.





**Step 3:** Each M8 hole location identified in step 2 will be threaded using the supplied M8x20mm hex head thread cutting bolts. To do this you will need a powered nut driver, 13mm short socket and Ratchet wrench.

**Step 4:** Start the m8 thread cutting bolt using the powered nut driver and 13mm socket. Be sure and keep the bolt straight for proper thread engagement.

**Step 5:** Once you have the bolt started, finish tightening using the ratchet wrench. Once the bolt is fully engaged you can remove and set aside. You will use this bolt later in the install.

**Step 6:** Continue this process with the remainder M8 holes.



## DRIVER SIDE BRACKET INSTALL

There will be two mounting location under the driver door.



**Step 1:** Install **Driver #1 brkt** on the factory-threaded stud and loosely fasten with one of the supplied M8 flanged nuts. Next, install one of the M8x20mm hex bolts, lock washer and flat washer to the lower mount and loosely tighten.

**Step 2:** Install **Driver #2 brkt** using the supplied (x2) M8x20mm hex bolts, lock washer and flat washer to the upper mount and loosely tighten.



**NOTE:** Some models have rear AC.  
Be careful when installing the  
bracket not to damage any lines.



**Step 3:** Next, make sure the mounting brackets are straight and level for the next step.

**Step 4:** You will need to drill out the holes for the pinch weld mounts. Use a **9/32 drill bit** and drill through the bracket and pinch weld. **NOTE: Make sure you do not drill into the outer trim on the opposite side.**



**Step 5:** Install the M8x20mm thread cutting hex bolt, lock washer and flat washer in the pinch weld and tighten.

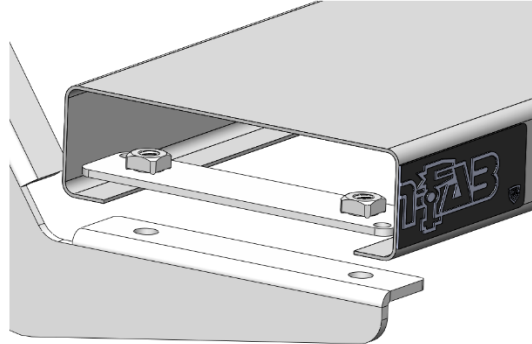
**Step 6:** Finish by tightening all remaining fasteners.



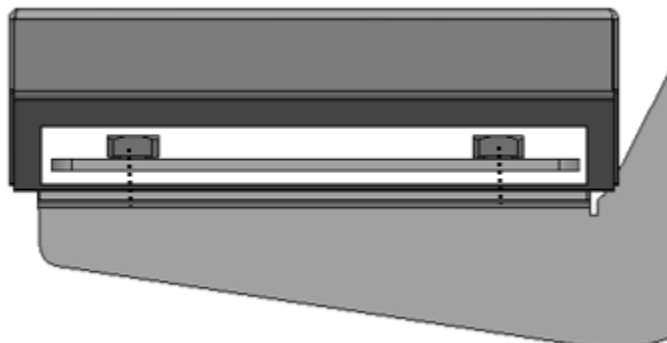
**Step 7:** Set the 31" running board along the top of all 2 brackets and center along the cab.

**Step 8:** Insert the supplied threaded bracket (x2) inside the running board lip over the top of each bracket.

**Step 9:** With the supplied 3/8" x 1" hex bolts, secure each mounting location and leave loose.



**Step 10:** After final adjustment, tighten all running board threaded mounts.





## PASSENGER SIDE BRACKET INSTALL

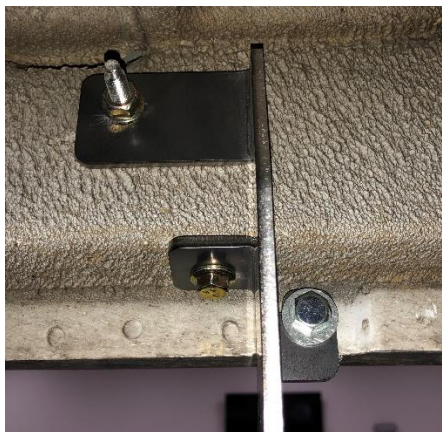
**Step 1:** Install (x3) **Passenger 3** bracket to each factory stud mounting position and snug using the supplied m8 flanged nuts.

**Step 2:** Install the supplied M8x20mm thread cutting hex head bolt, lock washer and flat washer to the lower mount and secure. Make sure bracket is straight and level for the next step.

**Step 3:** Repeat **Step 4** from driver side bracket install for the pinch weld attachment.



**Step 4:** Next, install the remaining M8x20mm thread cutting hex head bolt, lock washer and flat washer to the pinch weld mount. Tighten all fasteners in each bracket.



**Step 5:** Re-repeat **Steps 7-10** from driver side bracket install with 85" board.