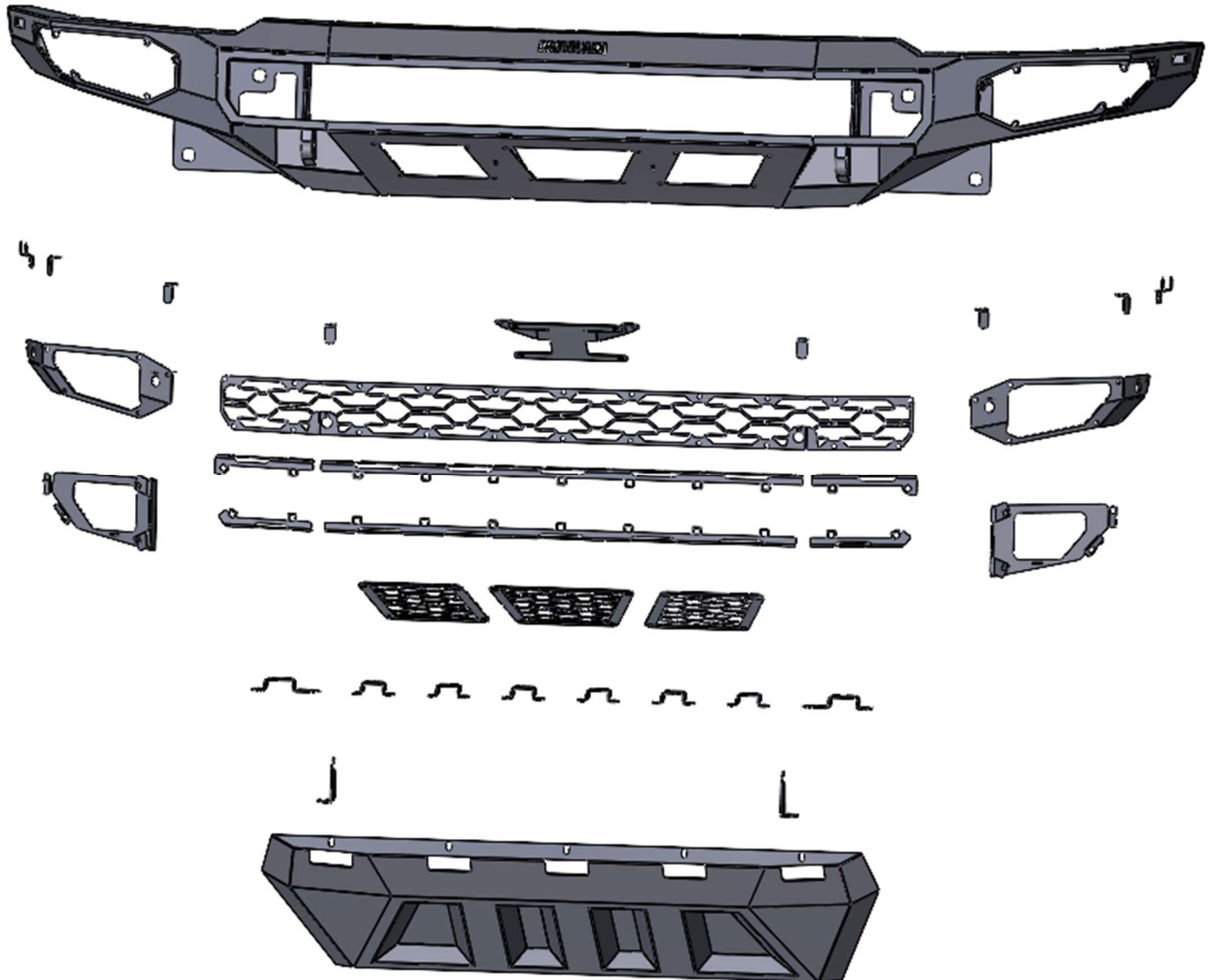
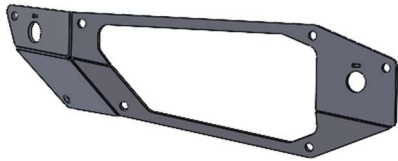


# INSTALLATION GUIDE

## PARTS



Exploded View



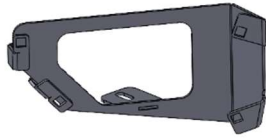
Passenger Fog Light Plate



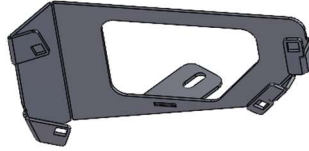
Driver Fog Light Plate



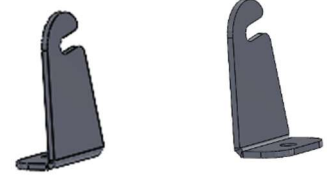
Sensor Tabs x6



Passenger Fog Light Bucket



Driver Fog Light Bucket



Light Bar Mounts



Center Mesh



Upper Passenger  
Side Mesh Mount

Upper Center  
Mesh Mount

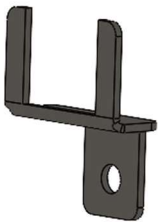
Upper Driver Side  
Mesh Mount



Lower Passenger Side  
Mesh Mount

Lower Center  
Mesh Mount

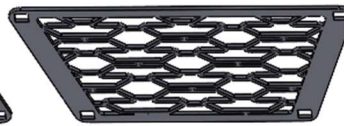
Lower Driver Side  
Mesh Mount



Side Marker  
Bracket x2



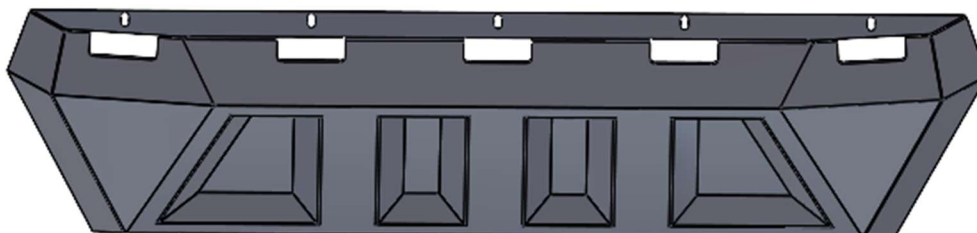
Outside Air Dam  
Mesh



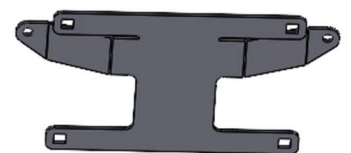
Center Air Dam  
Mesh



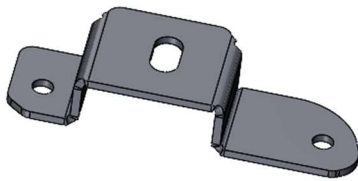
Outside Air Dam  
Mesh



Skid Plate



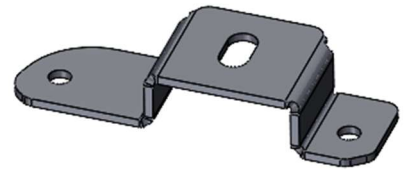
License Plate Bracket



**Passenger Side Cube  
Light Bracket**



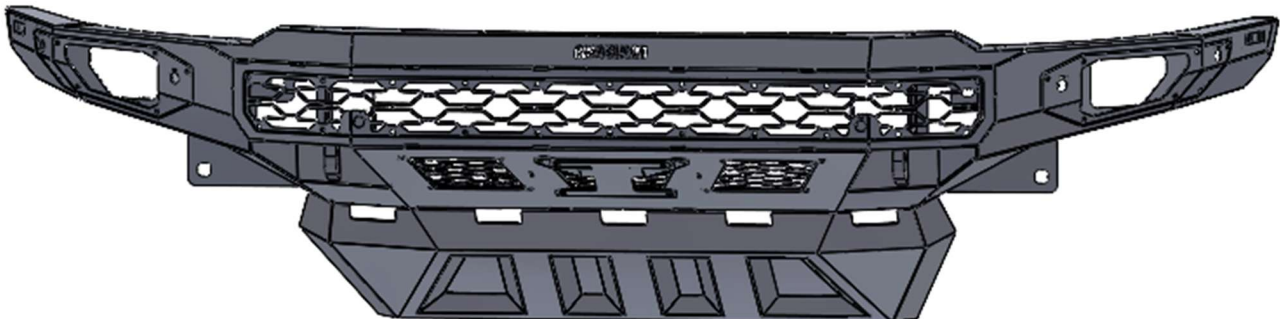
**Center Cube Light  
Bracket x6**



**Driver Side Cube  
Light Bracket**

## HARDWARE

<b><u>Freedom Front License Plate</u></b>	<b><u>Qty:</u></b>
1/4-20 x 3/4 Long, Stainless Steel SBHCS	2
1/4-20 (.093-.126: Panel Range) Zinc Electroplate Spring Steel Cage Nut	2
Plastic License Plate Nuts	4
#14 x 5/8" Zinc License Plate Screw	4
<b><u>Freedom Front Light Bar and Mesh (Including Air Dam)</u></b>	<b><u>Qty</u></b>
1/4-20 x 5/8 Long, Stainless Steel SBHCS	54
1/4-20 Hex Grade 5 Serrated Flange Nut, Stainless Steel	20
1/4-20 (.093-.126: Panel Range) Zinc Electroplate Spring Steel Cage Nut	34
<b><u>Freedom Front Sensor Mounts</u></b>	<b><u>Qty</u></b>
1/4-20 x 5/8 Long, Stainless Steel SBHCS	8
1/4-20 Hex Grade 5 Serrated Flange Nut, Stainless Steel	8
1/4-20 (.093-.126: Panel Range) Zinc Electroplate Spring Steel Cage Nut	2
<b><u>Freedom Front Fog Light Assembly</u></b>	<b><u>Qty:</u></b>
1/4-20 x 5/8 Long, Stainless Steel SBHCS	14
1/4-20 (.093-.126: Panel Range) Zinc Electroplate Spring Steel Cage Nut	14
<b><u>Freedom Front 3x3 Cube Light Mounts</u></b>	<b><u>Qty:</u></b>
1/4-20 x 5/8 Long, Stainless Steel SBHCS	16
1/4-20 Hex Grade 5 Serrated Flange Nut, Stainless Steel	16
<b><u>Freedom Front Skid Plate</u></b>	<b><u>Qty</u></b>
5/16"-18 x 1" Long, Stainless Steel SBHCS	6
5/16"-18, Flange nut	6
5/16", Washer	6
<b><u>Freedom Front Mount Kit 21+ RAM TRX NON-WINCH</u></b>	<b><u>Qty</u></b>
7/16"-14 x 1-1/4" Yellow Zinc Grade 8 Bolt	12
7/16 Washer, Grade 8 Zinc-Yellow	14
7/16-14 Grade 8 Steel Serrated Flange Nut Zinc	12



## CENTER LIGHT BAR CONFIGURATION (*Optional*)



**Rigid 130313 E-Series - 30" Bar - Spot/Flood Combo Pattern**



**Rigid 130313 E-Series - 30" Bar - Spot/Flood Combo Pattern  
Rigid 202113 D-Series Pro Cube - Flood Pattern - Surface Mount (pair)**



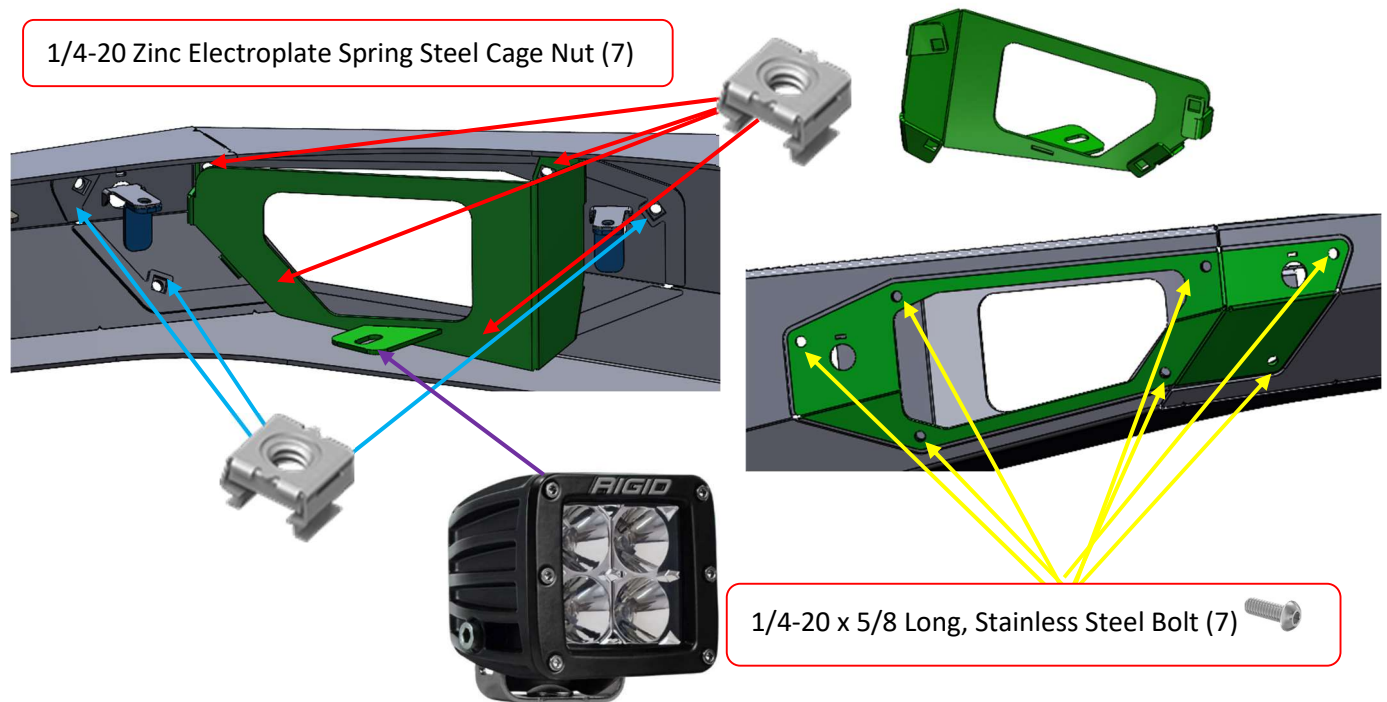
**Rigid 321113 D-XL Pro – 4"x4" Cube – Spot or Flood Combo Pattern**



1. 3x3 cube lights can be installed using the slotted holes in the brackets pictured in green.
2. 4x4 cube lights do not require mounting brackets.
3. Also, light bar mount brackets (pictured in yellow) are included to allow the use of a 30" light bar.

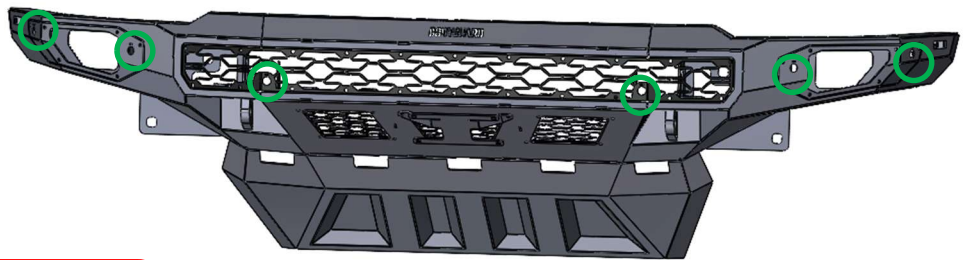
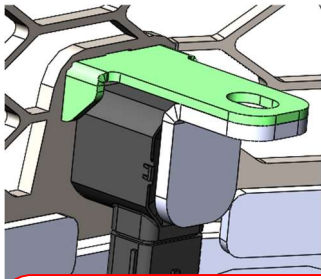
## FOG LIGHT INSTALLATION

1. Install cage nuts in fog light trim (**blue arrows**) and the fog light bucket (**red arrows**).
2. Insert button-head screws through fog light plate and into cage nuts and tighten (**yellow arrows**).
3. Cube lights can be secured to the tab on the back of the fog light bucket (**purple arrow**).



## PARKING SENSOR INSTALL

1. Then install the sensor tab over the sensor shown below. Slide the sensor and sensor tab into position and tighten down with a 1/4"-20 x 3/4" BHCS. Plug the parking sensors into the harness and let the center mesh and fog light trim rings loosely hang down.

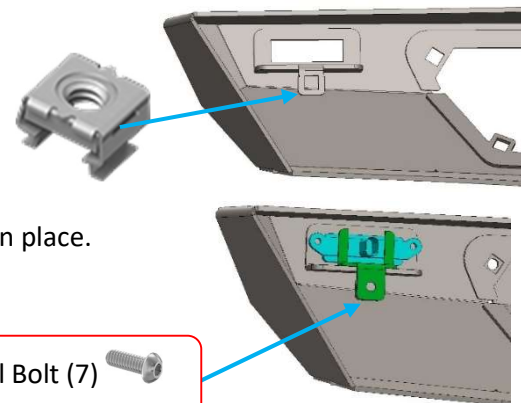


(6) - 1/4-20 x 5/8 Long, Stainless Steel SBHCS



(6) - 1/4-20 Hex Grade 5 Serrated Flange Nut, Stainless Steel

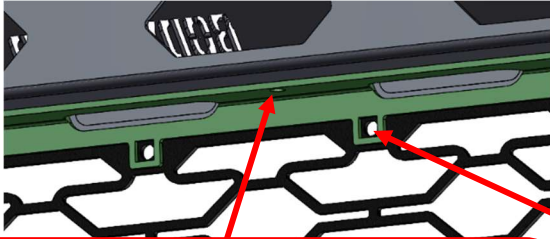
2. Install side marker as shown. Start by inserting the cage nut.
3. Then use the bracket pictured in green to secure marker light in place.
4. Use 1/4 button-head screw to secure bracket to bumper.



1/4-20 x 5/8 Long, Stainless Steel Bolt (7)

## MESH PLATE INSTALL

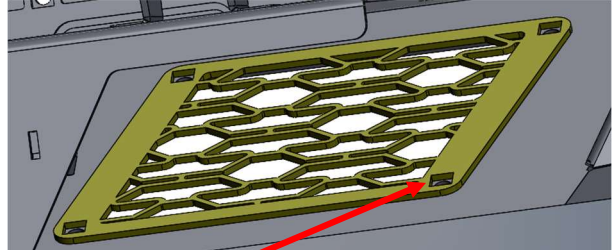
1. Mount brackets for the center mesh are bolt-on components. They should be installed with a total of 18 1/4-20 x 5/8 Long, Stainless Steel Bolts and hex nuts.
2. Install cage nuts into the appropriate holes in the air dam mesh components (12 nuts) and center mesh mount brackets (18 nuts).
3. Use provided 1/4-20 x 5/8 Long, Stainless Steel Bolts (30) to secure mesh plates.



(20) - 1/4-20 x 5/8 Long, Stainless Steel SBHCS



(20) - 1/4-20 Hex Grade 5 Serrated Flange Nut, Stainless Steel



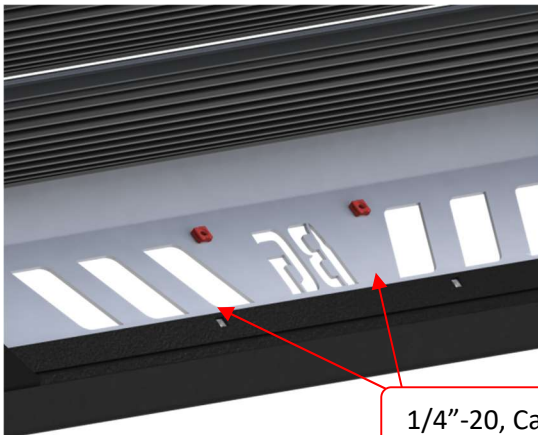
(34) - 1/4-20 (.093-.126: Panel Range) Zinc Electroplate Spring Steel Cage Nut



(34) - 1/4-20 x 5/8 Long, Stainless Steel SBHCS

## LICENSE PLATE INSTALL

1. Install (2) 1/4"-20 Cage Nuts into square holes, then the install license plate bracket to the skid plate using (2) 1/4"-20 x 5/8" button head screws



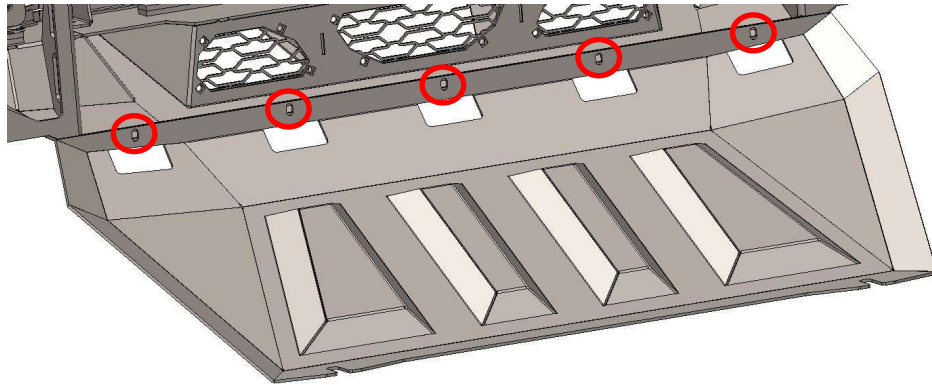
1/4"-20, Cage Nut



1/4"-20 x 5/8", SBHCS

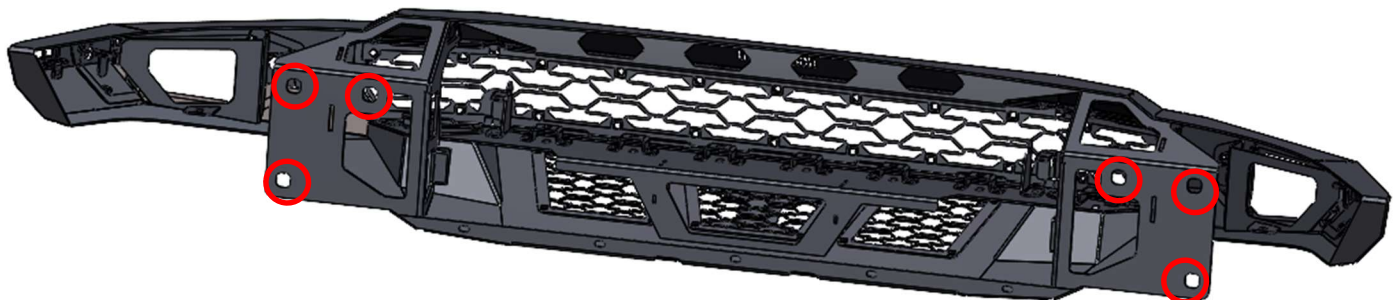
# SKID PLATE INSTALL

1. Install the 2x factory skid plate hardware loosely and slide the skid plate onto the bolts. Align the skid plate with the bumper and affix to the bumper using 5/16"-18 hardware. After installing the 5/16"-18 hardware, tighten all skid plate hardware.



# BUMPER INSTALL

1. Carefully place the bumper up to the frame and fasten using 7/16"-14 hardware. Adjust fitment vertically and horizontally, then tighten all hardware.
2. Carefully place the bumper up to the frame and fasten using 7/16"-14 hardware. Adjust fitment vertically and horizontally, then tighten all hardware.



# SAFETY

## THE SAFETY OF YOU AND OTHERS IS VERY IMPORTANT TO US!

To minimize this risk and make an informed decision about safety, it is important that you carefully read and follow the installation instructions we have provided.

We urge you to use your own good judgment and allow plenty of time for installation.

# HAZARD CHECKLIST

1. Always wear personal protective equipment (PPE) such as: protective eye wear, gloves, close toed shoes, etc.
2. We recommend that you use a certified mechanic or shop for professional installation.
3. Always set emergency brakes on the vehicle and use tire blocks to ensure vehicle stabilization.
4. Use caution when lifting, we recommend the use of equipment to help lift bumpers into place.
5. Use caution when using power tools such as air ratchet, etc.
6. Take caution when installing wiring.
7. Perform regular inspections of hardware, bolts, brackets, etc.
8. Rigid light brackets are specifically designed to fit Rigid lights, we do not guarantee off brand fitment.
9. Our winch mount is designed for Warn and Superwinch products. We do not guarantee off-brand fitment.

# USE & RISK

Bodyguard Products LLC is not responsible for damage to our products, or other subsequent damage that might occur because of misuse or improper installation. While we do manufacture products that appear stronger than factory parts, our products should not be viewed or relied upon as life-saving devices in the event of a collision or rollover. We make no claims relating to airbag compatibility, crashworthiness, or sturdiness. It is the customer's responsibility to check with the vehicle manufacturer or auto dealer regarding airbag compatibility and automobile manufacturer's warranty before installing our products.

# FINISHING UP

- Install shackles.
- Confirm that all hardware is tightened, and everything is secure.
- Secure wiring harnesses for lights and sensors.
- Test all lighting and wiring before using vehicle (fog lights, sensors, etc.).

# MAINTENANCE

- Periodically check that all hardware is tightened and that all wiring and connections are secure.
- Periodically check that all sensor plugs are secure.
- Routinely wash bumper to maintain the powder coat finish.

# FEEDBACK

We'd love to hear from you!

Please send your pictures, testimonials, comments, or suggestions to us by email at [info@bodyguardbumpers.com](mailto:info@bodyguardbumpers.com). We frequently use customer pictures for brochures and marketing materials, and we always welcome customer feedback to ensure quality improvements within our company. Thanks for your purchase; we appreciate your business very much!

Where **STRENGTH** Meets *Style!*™

