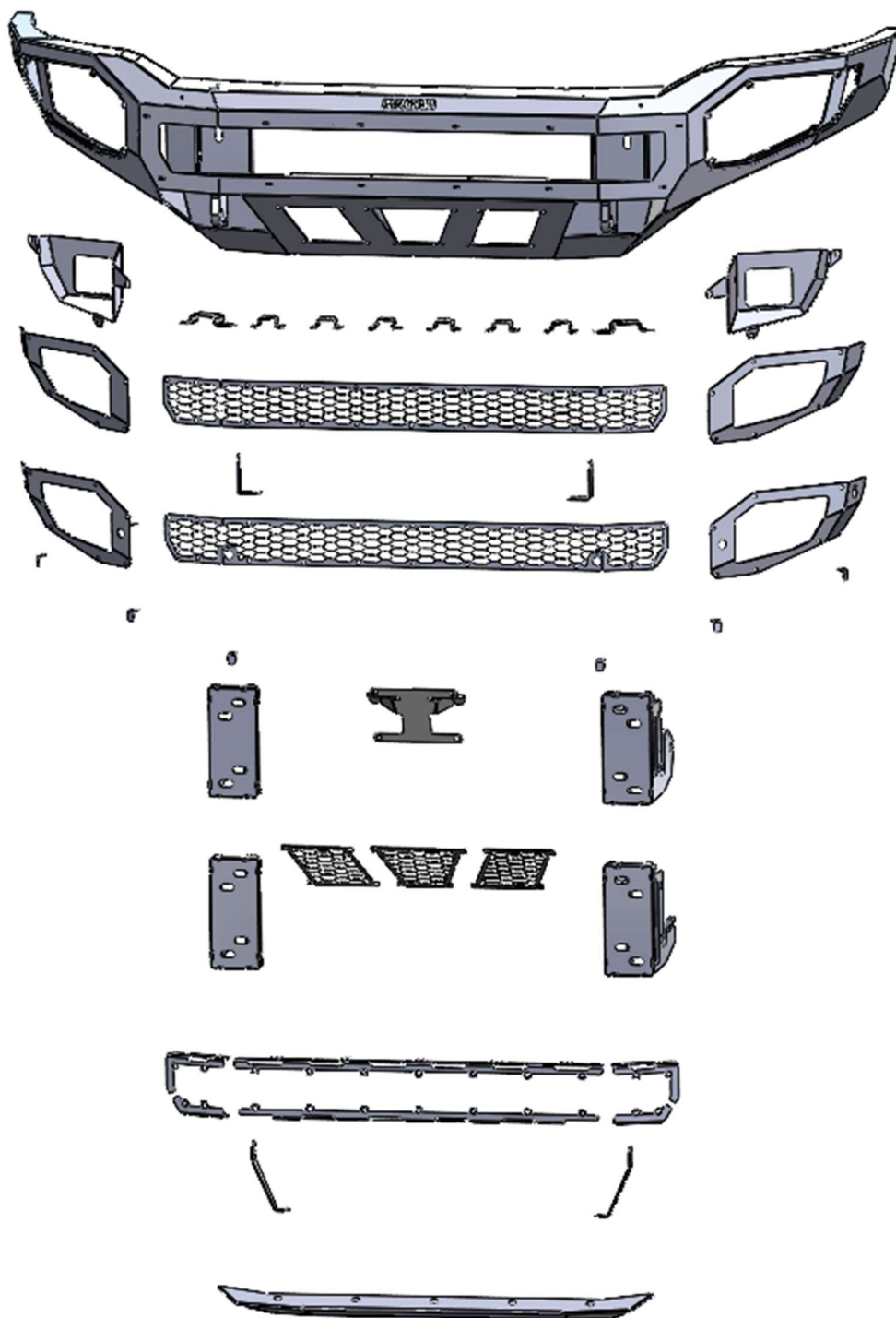
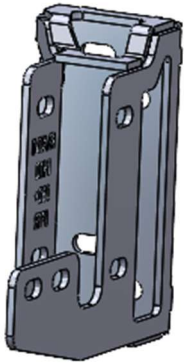


INSTALLATION GUIDE

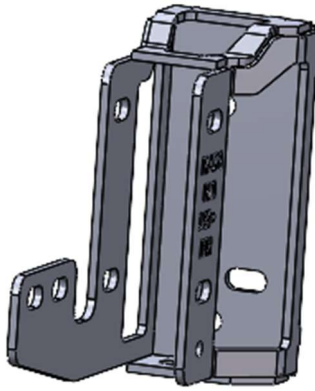
PARTS



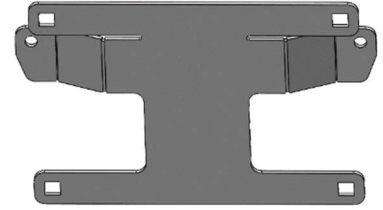
Exploded View



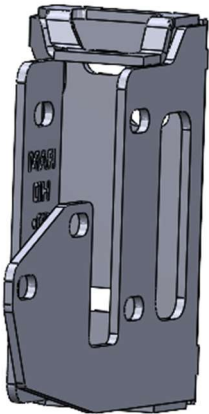
**Passenger Side Truck Mount
2500-3500**



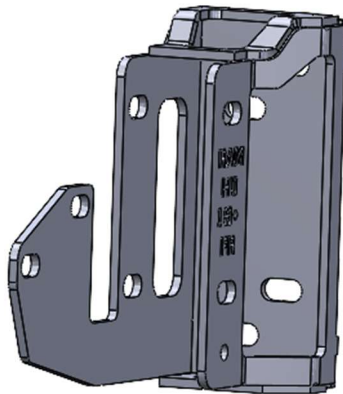
**Driver Side Truck Mount
2500-3500**



License Plate Bracket



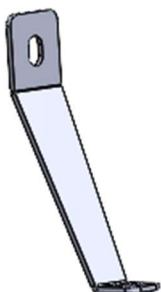
**Passenger Side Truck Mount
4500-5500**



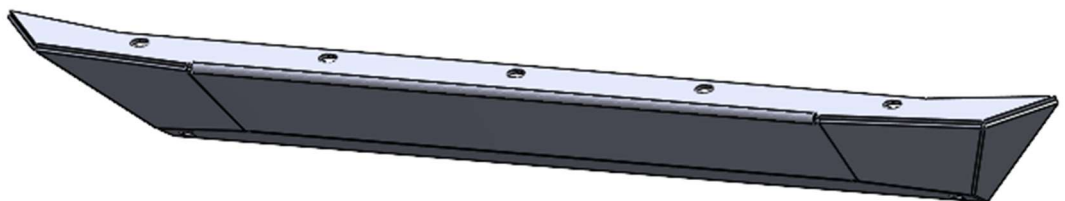
**Driver Side Truck Mount
4500-5500**



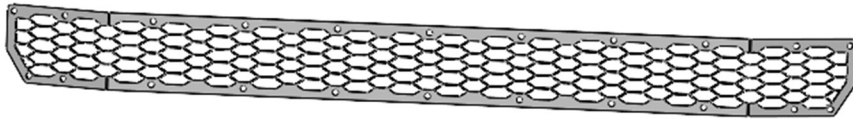
Sensor Tabs x6



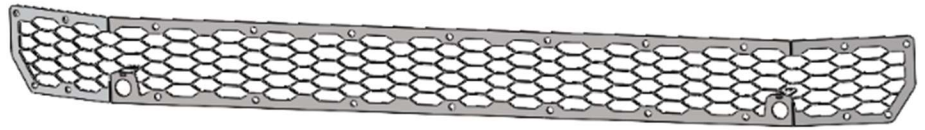
Skid Plate Brace x2



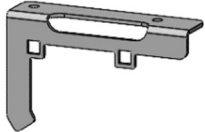
Skid Plate



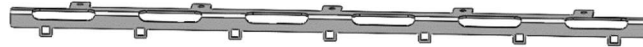
Center Mesh (No sensors)



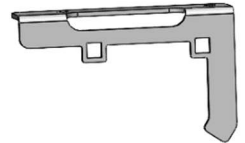
Center Mesh (Sensors)



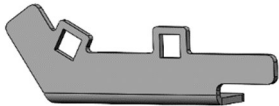
Upper Passenger Side Mesh Mount



Upper Center Mesh Mount



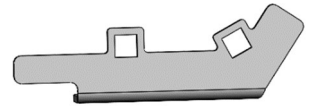
Upper Driver Side Mesh Mount



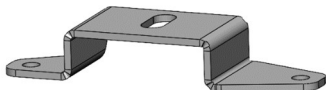
Lower Passenger Side Mesh Mount



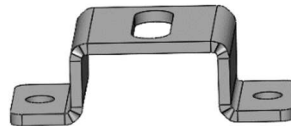
Lower Center Mesh Mount



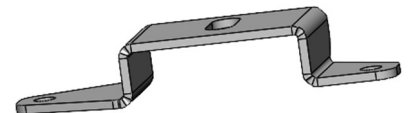
Lower Driver Side Mesh Mount



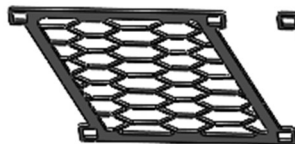
Passenger Side Cube Light Bracket



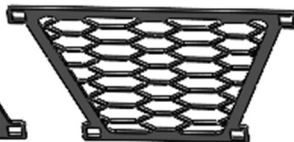
Center Cube Light Bracket x6



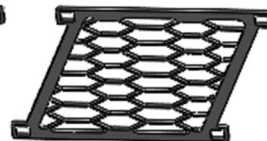
Driver Side Cube Light Bracket



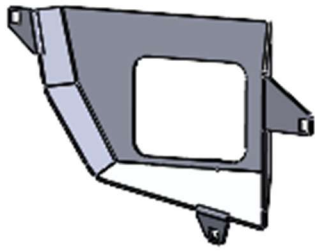
Passenger Side Air Dam Mesh



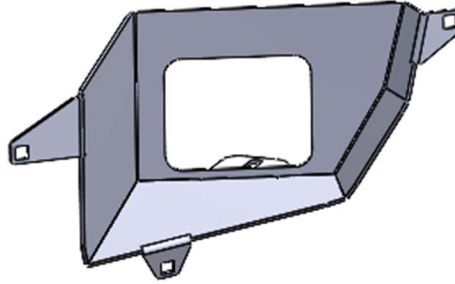
Center Air Dam Mesh



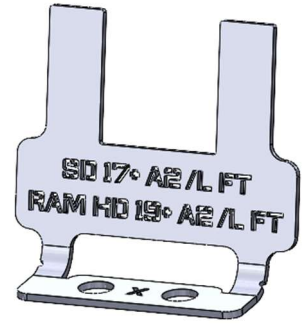
Driver Side Air Dam Mesh



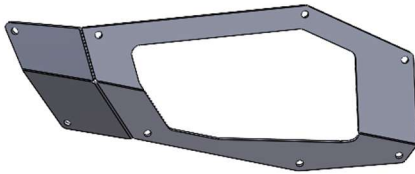
Passenger Side Fog
Light Bucket



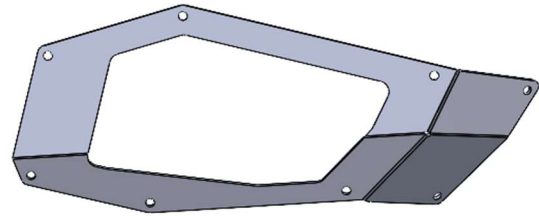
Driver Side Fog Light
Bucket



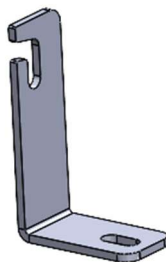
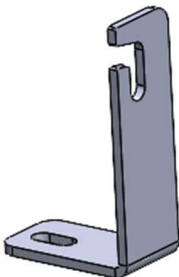
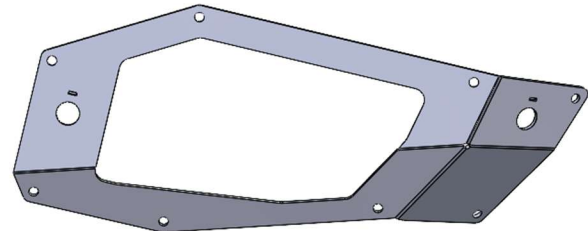
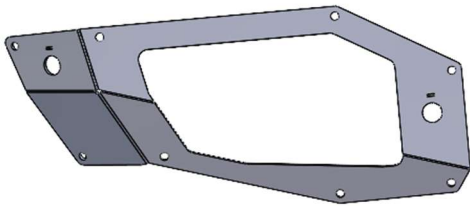
Extreme Guard
Camera Bracket



Passenger Side Fog
Light Plate (No sensor)



Driver Side Fog Light
Plate (No Sensor)



Light Bar Mounts x2

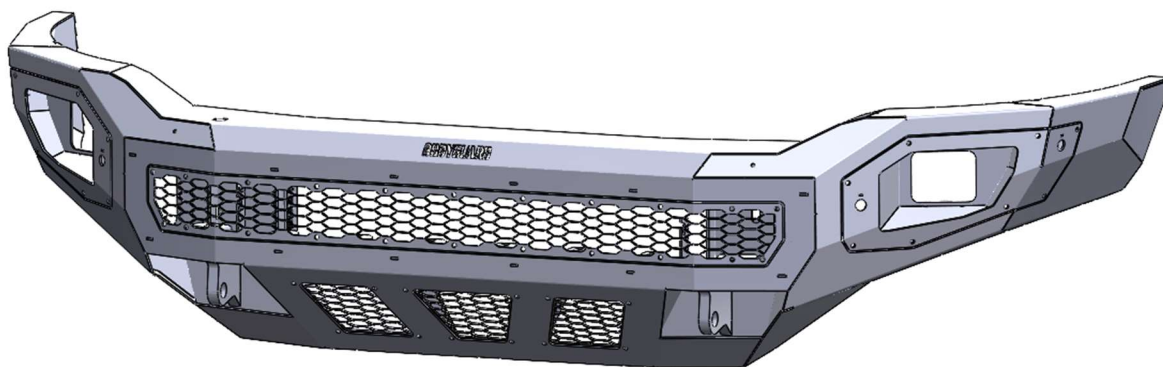


Sport Camera Bracket

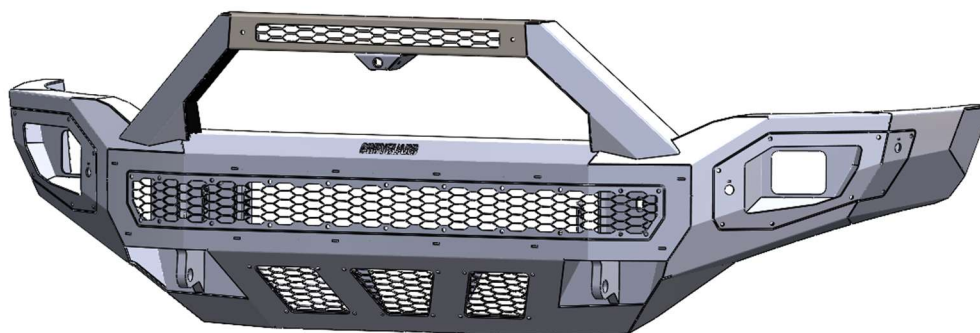
HARDWARE KIT

<u>Freedom Front License Plate</u>	<u>Qty:</u>
1/4-20 x 3/4 Long, Stainless Steel SBHCS	2
1/4-20 (.093-.126: Panel Range) Zinc Electroplate Spring Steel Cage Nut	2
Plastic License Plate Nuts	4
#14 x 5/8" Zinc License Plate Screw	4
<u>Freedom Front Light Bar and Mesh (Including Air Dam)</u>	<u>Qty</u>
1/4-20 x 5/8 Long, Stainless Steel SBHCS	50
1/4-20 Hex Grade 5 Serrated Flange Nut, Stainless Steel	20
1/4-20 (.093-.126: Panel Range) Zinc Electroplate Spring Steel Cage Nut	30
<u>Freedom Front Formed Sport Bar</u>	<u>Qty</u>
1/4-20 x 5/8 Long, Stainless Steel SBHCS	6
1/4-20 Hex Grade 5 Serrated Flange Nut, Stainless Steel	4
1/4-20 (.093-.126: Panel Range) Zinc Electroplate Spring Steel Cage Nut	2
<u>Freedom Front Fog Light Assembly</u>	<u>Qty:</u>
1/4-20 x 5/8 Long, Stainless Steel SBHCS	16
1/4-20 (.093-.126: Panel Range) Zinc Electroplate Spring Steel Cage Nut	16
<u>Freedom Front 3x3 Cube Light Mounts</u>	<u>Qty:</u>
1/4-20 x 5/8 Long, Stainless Steel SBHCS	16
1/4-20 Hex Grade 5 Serrated Flange Nut, Stainless Steel	16
<u>Freedom Front Mount Kit 19-24 RAM</u>	<u>Qty</u>
1/2-13 x 1-1/2 Long, Grade 8 HB Zinc-Black	8
1/2" Washer, Grade 8 Black	8
1/2" Washer, Grade 8 Zinc-Yellow	16
1/2"-13 Grade 8 Steel Serrated Flange Nut Zinc	16
1/2-13 x 3-1/2 Long, Grade 8 HB Zinc-Yellow	8
<u>Freedom Front Skid Plate</u>	<u>Qty</u>
5/16"-18 x 1" Long, Stainless Steel SBHCS	9
5/16"-18, Washers	18
5/16"-18, Flange nut	9

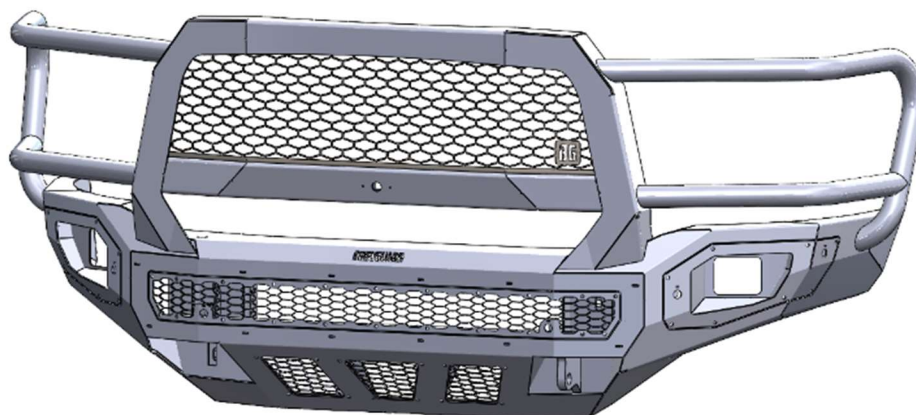
STYLE OPTIONS



Base



Sport



Extreme

CENTER LIGHT BAR CONFIGURATION (*Optional*)



Rigid 130313 E-Series - 30" Bar - Spot/Flood Combo Pattern

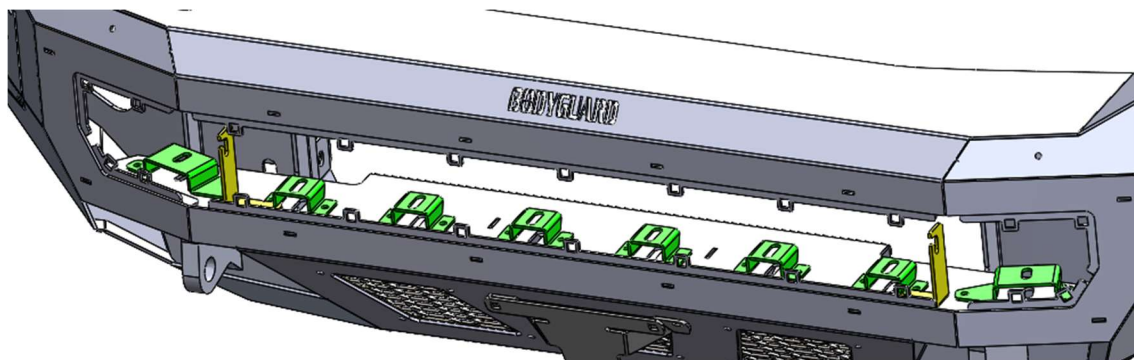


**Rigid 130313 E-Series - 30" Bar - Spot/Flood Combo Pattern
Rigid 202113 D-Series Pro Cube - Flood Pattern - Surface Mount (pair)**



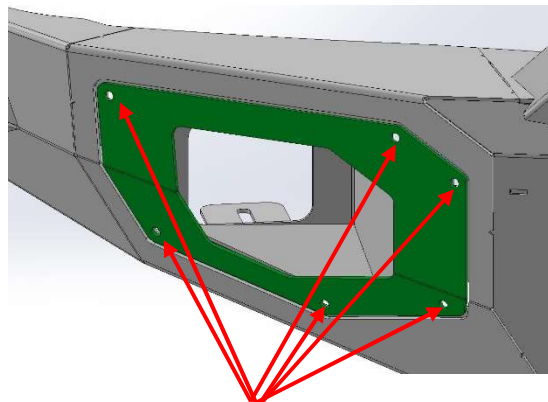
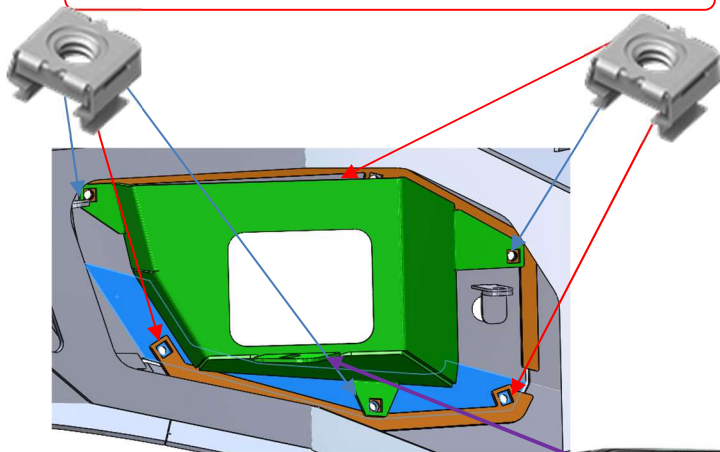
Rigid 321113 D-XL Pro – 4"x4" Cube – Spot or Flood Combo Pattern

1. 3x3 cube lights can be installed using the slotted holes in the brackets pictured in green.
2. 4x4 cube lights do not require mounting brackets.
3. Also, light bar mount brackets (pictured in yellow) are included to allow the use of a 30" light bar.



FOG LIGHT INSTALLATION

1/4-20 Zinc Electroplate Spring Steel Cage Nut (6x)

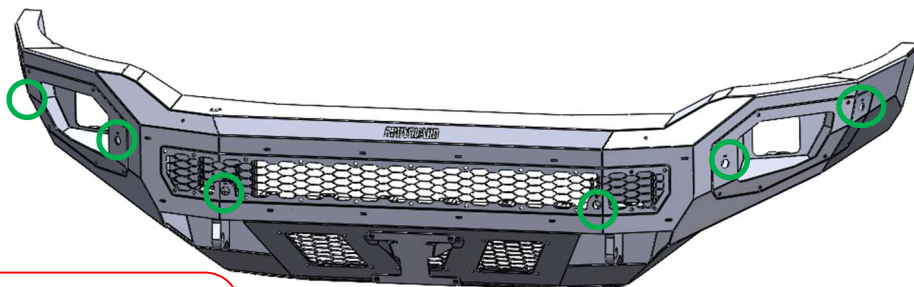
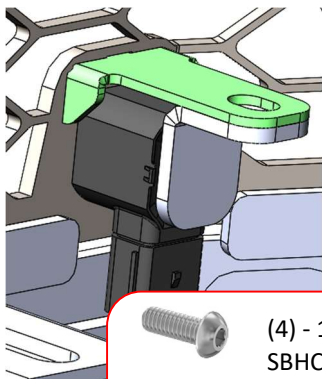


1/4-20 x 5/8 Long, Stainless Steel Bolt (6x)



PARKING SENSOR INSTALL

1. Then install the sensor tab over the sensor shown below. Slide the sensor and sensor tab into position and tighten down with a 1/4"-20 x 3/4" BHCS. Plug the parking sensors into the harness and let the center mesh and fog light trim rings loosely hang down.



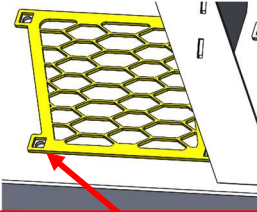
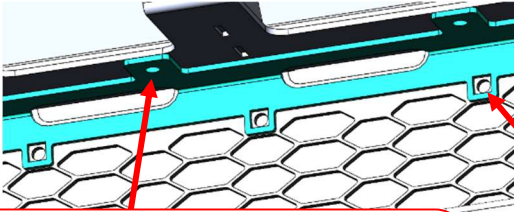
(4) - 1/4-20 x 5/8 Long, Stainless Steel
SBHCS



(4) - 1/4-20 Hex Grade 5 Serrated Flange
Nut, Stainless Steel

MESH PLATE INSTALL

1. Mount brackets for the center mesh are bolt-on components. They should be installed with a total of 18 1/4-20 x 5/8 Long, Stainless Steel Bolts and hex nuts.
2. Install cage nuts into the appropriate holes in the air dam mesh components (12 nuts) and center mesh mount brackets (18 nuts).
3. Use provided 1/4-20 x 5/8 Long, Stainless Steel Bolts (30) to secure mesh plates.



(18) - 1/4-20 x 5/8 Long, Stainless Steel SBHCS



(18) - 1/4-20 Hex Grade 5 Serrated Flange Nut, Stainless Steel



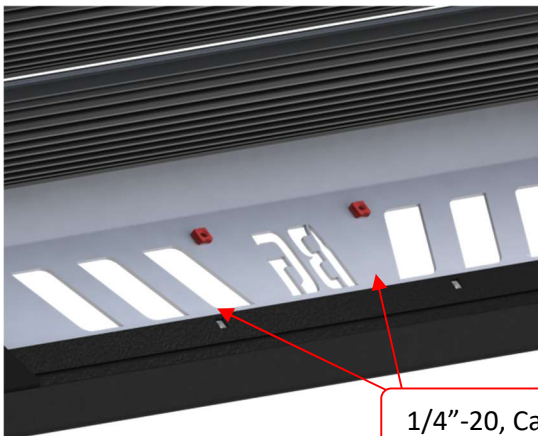
(30) - 1/4-20 (.093-.126: Panel Range) Zinc Electroplate Spring Steel Cage Nut



(30) - 1/4-20 x 5/8 Long, Stainless Steel SBHCS

LICENSE PLATE INSTALL

1. Install (2) 1/4"-20 Cage Nuts into square holes, then the install license plate bracket to the skid plate using (2) 1/4"-20 x 5/8" button head screws



1/4"-20, Cage Nut



1/4"-20 x 5/8", SBHCS

EXTREME CAMERA INSTALL *(For optional Extreme guard only)*

1. Place Camera into square spacer that is welded to the bumper. Then install the blue bracket with **(2) (1/4-20 x 5/8 Long, Stainless Steel SBHCS)** behind the camera. This bracket will press the camera against the spacer securing the camera to the grille guard.
2. If you choose not to use the camera or your bumper is not equipped with one, use the included camera plug.



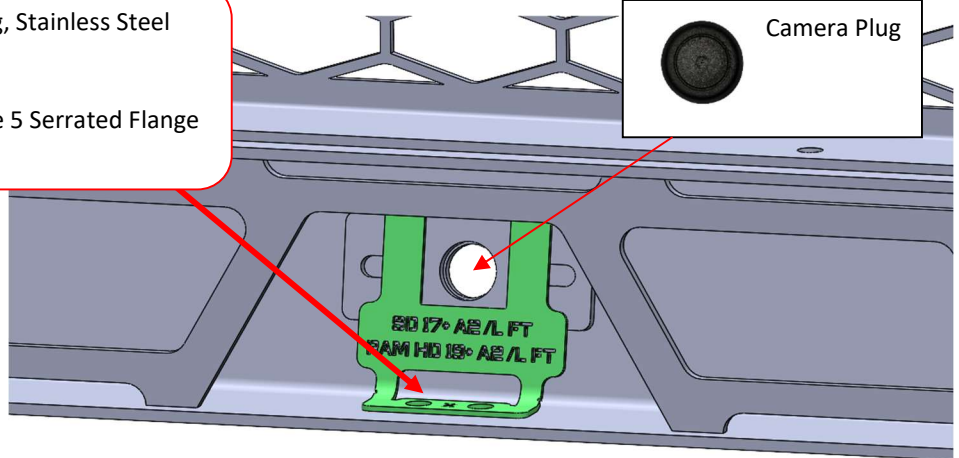
(2) - 1/4-20 x 3/4 Long, Stainless Steel SBHCS



(2) - 1/4-20 Hex Grade 5 Serrated Flange Nut, Stainless Steel

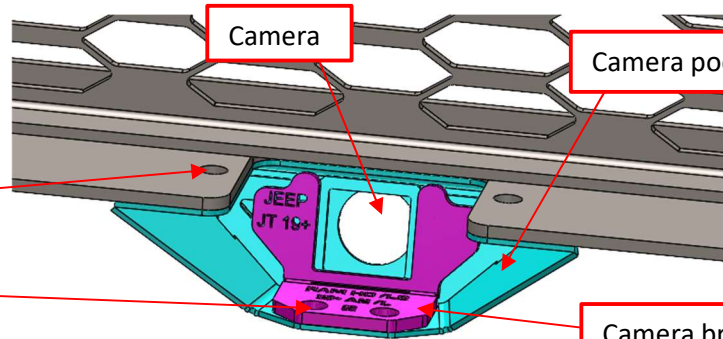


Camera Plug

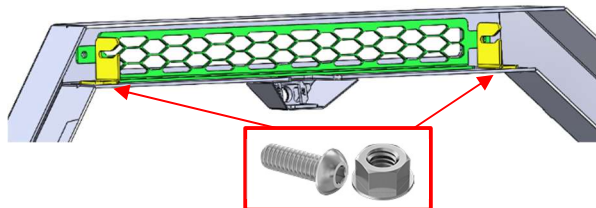


SPORT BAR CAMERA INSTALL *(For optional sport bar only)*

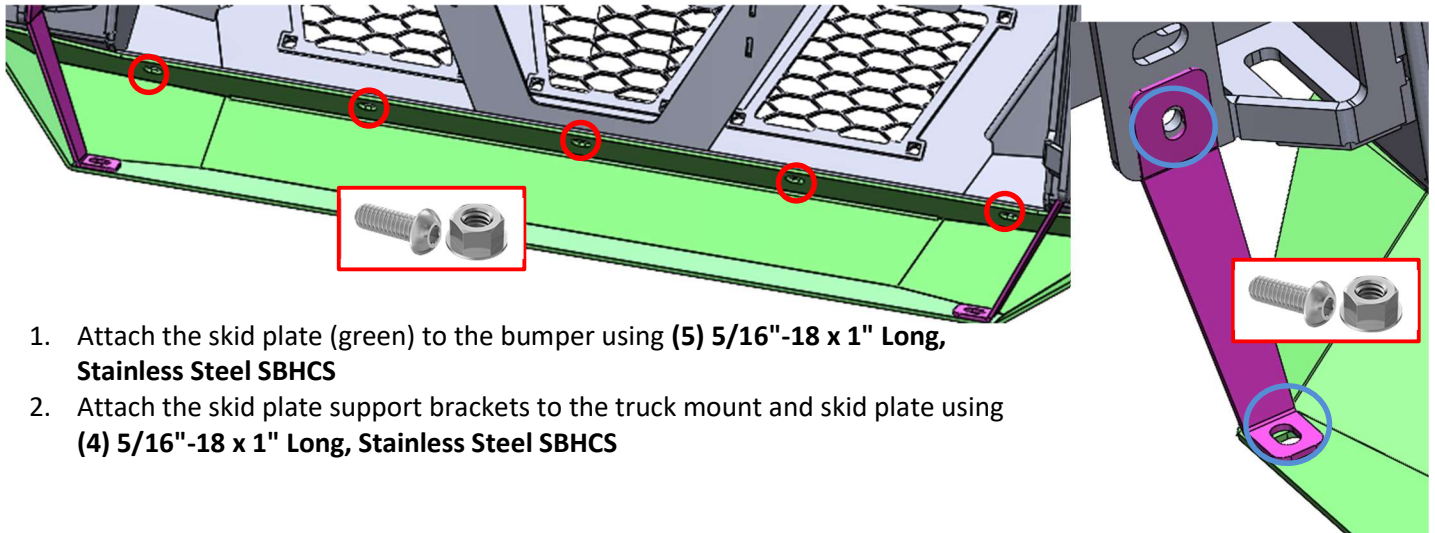
1. Install the camera pod to the sport bar using (2) 1/4"-20 cage nuts and (2) 1/4"-20 x 3/4" BHCS. Then install the camera into the pod and secure with the camera bracket using (2) 1/4"-20 BHCS and flange nuts.



2. Then install the sport bar mesh using (2) 1/4"-20 x 3/4" BHCS and flange nuts. Then install your light bar using the light bar brackets if applicable.



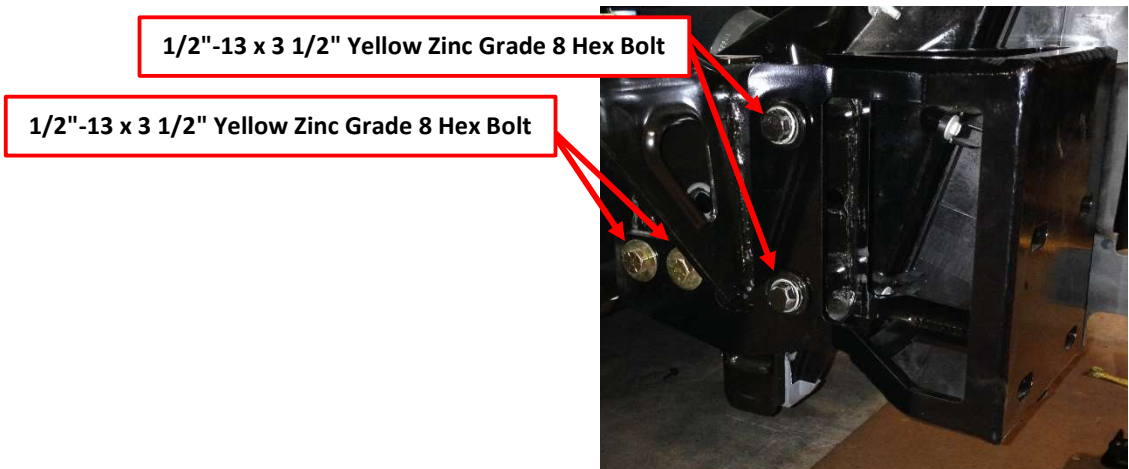
SKID PLATE INSTALL



1. Attach the skid plate (green) to the bumper using **(5) 5/16"-18 x 1" Long, Stainless Steel SBHCS**
2. Attach the skid plate support brackets to the truck mount and skid plate using **(4) 5/16"-18 x 1" Long, Stainless Steel SBHCS**

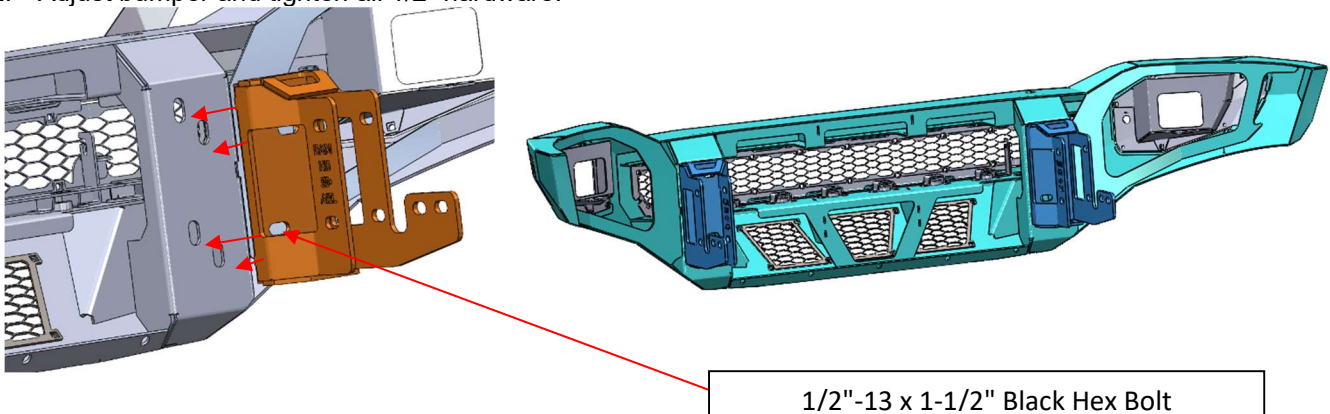
MOUNT INSTALL

1. Attach the truck mounts with the 1/2" stainless hardware, leaving enough space to adjust as needed.



UMPER INSTALL

1. Attach bumper with **(8) (1/2"-13 x 1-1/2" Black Hex Bolt)**
2. Adjust bumper and tighten all 1/2" hardware.



SAFETY

THE SAFETY OF YOU AND OTHERS IS VERY IMPORTANT TO US!

To minimize this risk and make an informed decision about safety, it is important that you carefully read and follow the installation instructions we have provided.

We urge you to use your own good judgment and allow plenty of time for installation.

HAZARD CHECKLIST

1. Always wear personal protective equipment (PPE) such as: protective eye wear, gloves, close toed shoes, etc.
2. We recommend that you use a certified mechanic or shop for professional installation.
3. Always set emergency brakes on the vehicle and use tire blocks to ensure vehicle stabilization.
4. Use caution when lifting, we recommend the use of equipment to help lift bumpers into place.
5. Use caution when using power tools such as air ratchet, etc.
6. Take caution when installing wiring.
7. Perform regular inspections of hardware, bolts, brackets, etc.
8. Rigid light brackets are specifically designed to fit Rigid lights, we do not guarantee off brand fitment.
9. Our winch mount is designed for Warn and Superwinch products. We do not guarantee off-brand fitment.

USE & RISK

Bodyguard Products LLC is not responsible for damage to our products, or other subsequent damage that might occur because of misuse or improper installation. While we do manufacture products that appear stronger than factory parts, our products should not be viewed or relied upon as life-saving devices in the event of a collision or rollover. We make no claims relating to airbag compatibility, crashworthiness, or sturdiness. It is the customer's responsibility to check with the vehicle manufacturer or auto dealer regarding airbag compatibility and automobile manufacturer's warranty before installing our products.

FINISHING UP

- Install shackles.
- Confirm that all hardware is tightened, and everything is secure.
- Secure wiring harnesses for lights and sensors.
- Test all lighting and wiring before using vehicle (fog lights, sensors, etc.).

MAINTENANCE

- 1) Periodically check that all hardware is tightened and that all wiring and connections are secure.
- 2) Periodically check that all sensor plugs are secure.
- 3) Routinely wash bumper to maintain the powder coat finish.

FEEDBACK

We'd love to hear from you!

Please send your pictures, testimonials, comments, or suggestions to us by email at info@bodyguardbumpers.com. We frequently use customer pictures for brochures and marketing materials, and we always welcome customer feedback to ensure quality improvements within our company. Thanks for your purchase; we appreciate your business very much!

Where **STRENGTH** Meets *Style!*™



@BodyguardBumpers