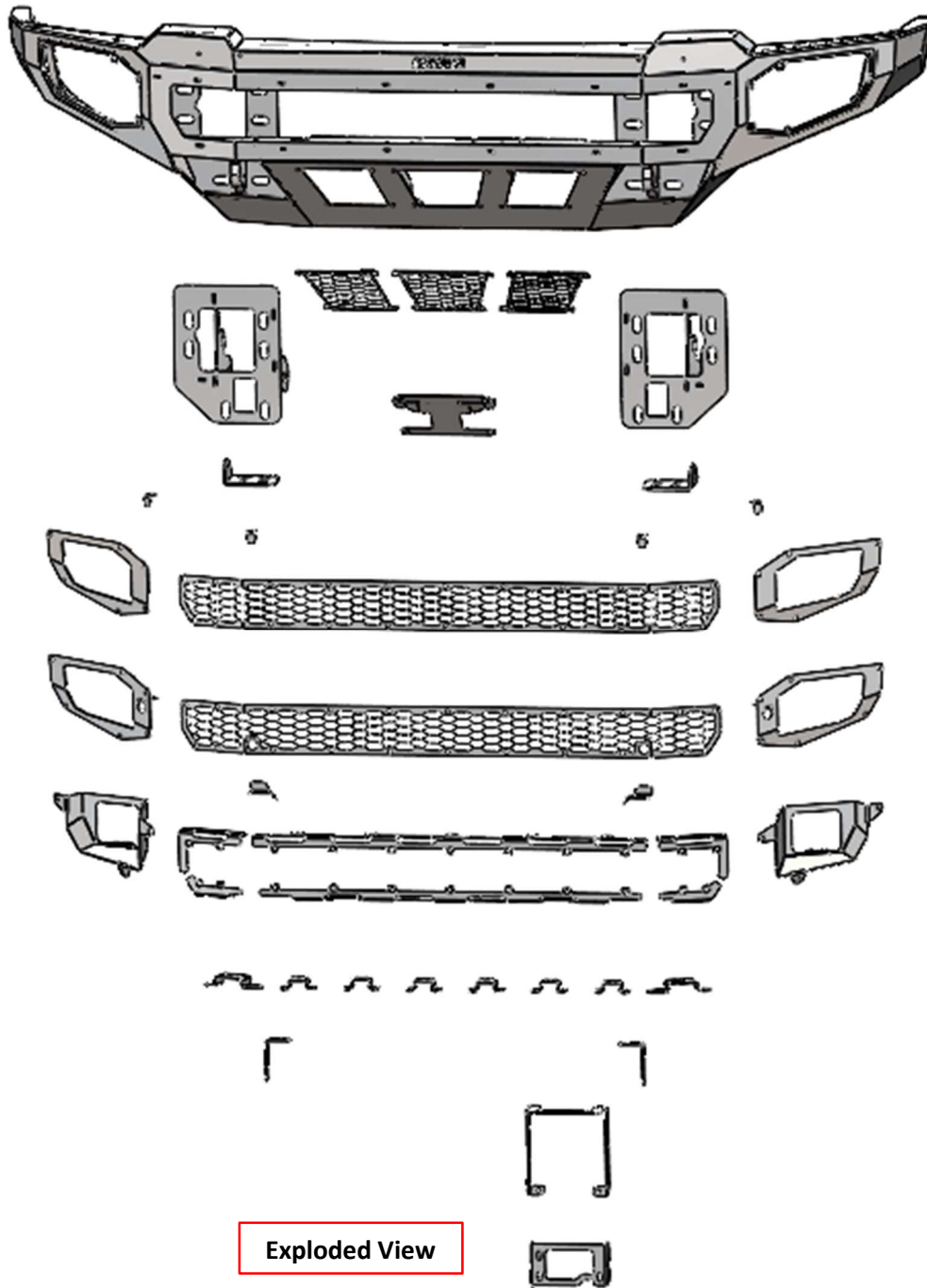
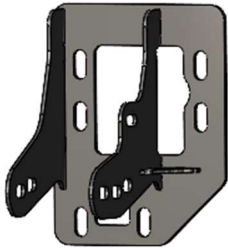


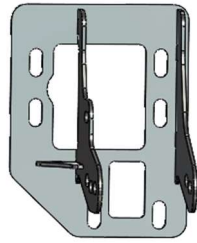
INSTALLATION GUIDE

PARTS

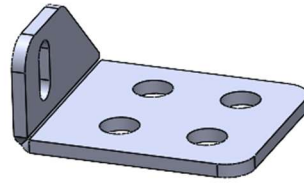




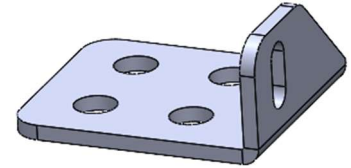
**Passenger Side
Truck Mount**



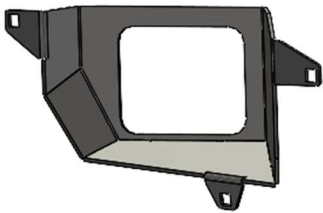
**Driver Side Truck
Mount**



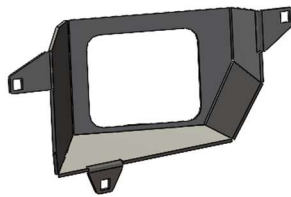
**Passenger Side
Four-Hole Plate**



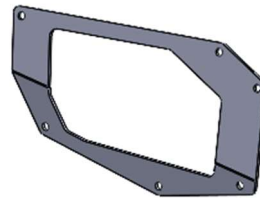
**Driver Side
Four-Hole Plate**



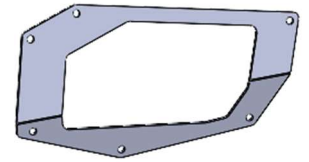
**Passenger Side Fog
Light Bucket**



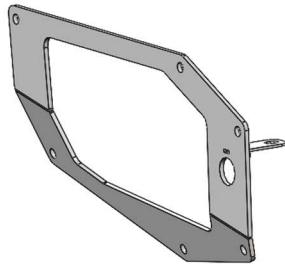
**Driver Side Fog Light
Bucket**



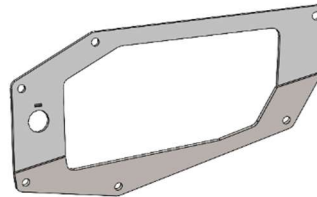
**Passenger Side Fog
Light Plate (No sensor)**



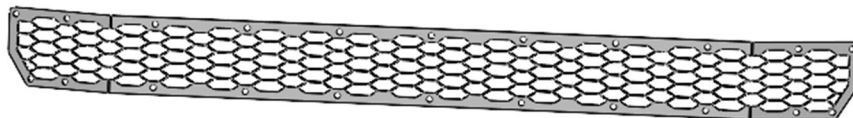
**Driver Side Fog Light
Plate (No Sensor)**



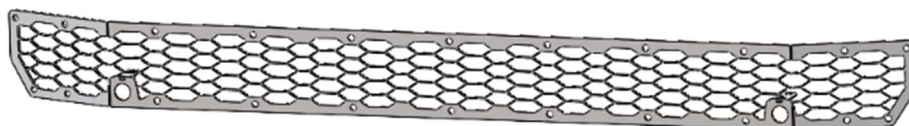
**Passenger Side Fog
Light Plate**



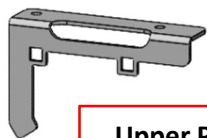
**Driver Side Fog
Light Plate**



Center Mesh (No sensors)



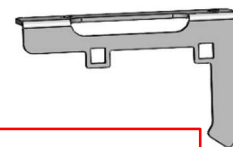
Center Mesh (Sensors)



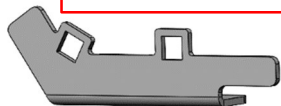
Upper Passenger Side Mesh Mount



Upper Center Mesh Mount



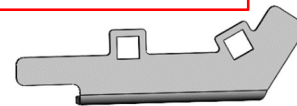
Upper Driver Side Mesh Mount



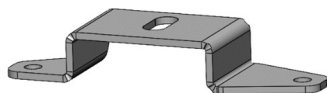
Lower Passenger Side Mesh Mount



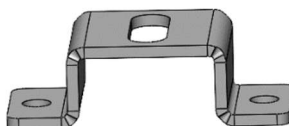
Lower Center Mesh Mount



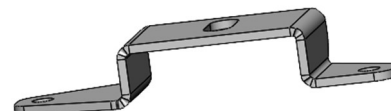
Lower Driver Side Mesh Mount



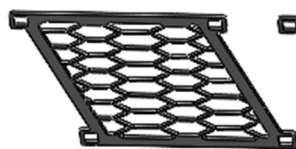
Passenger Side Cube Light Bracket



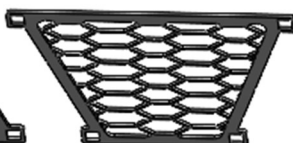
Center Cube Light Bracket x6



Driver Side Cube Light Bracket



Passenger Side Air Dam Mesh



Center Air Dam Mesh



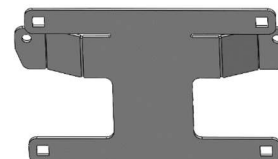
Driver Side Air Dam Mesh



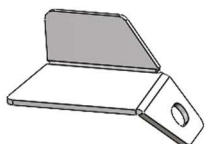
ACC Mount



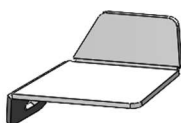
ACC Bracket



License Plate Bracket



Passenger Side Sensor Cover



Driver Side Sensor Cover

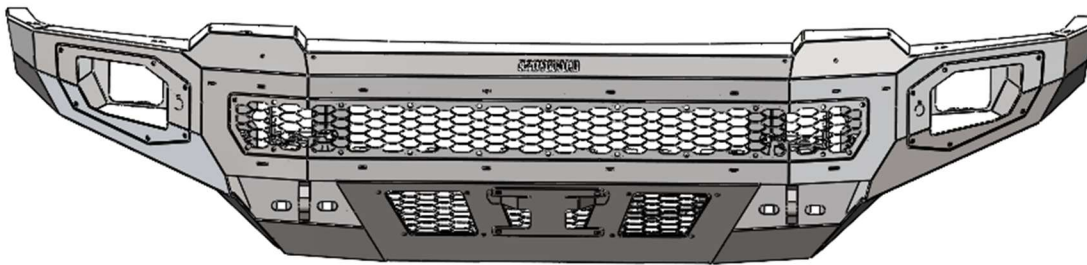


Sensor Tabs x4

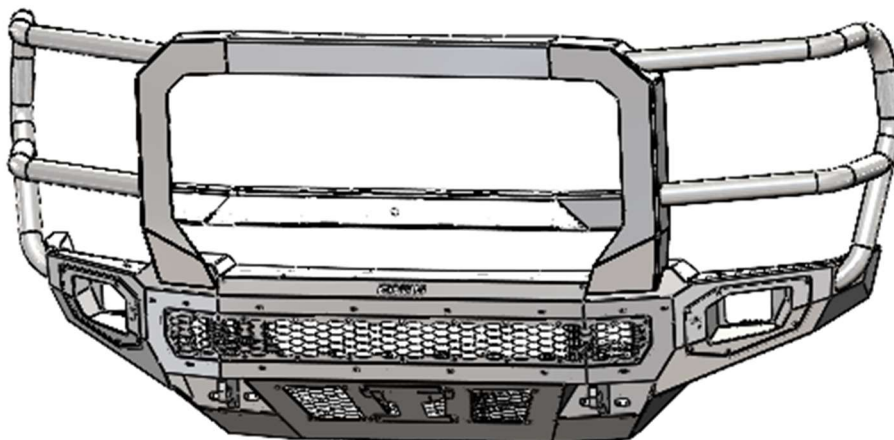
HARDWARE

<u>Freedom Front License Plate</u>	<u>Qty:</u>
1/4-20 x 3/4 Long, Stainless Steel SBHCS	2
1/4-20 (.093-.126: Panel Range) Zinc Electroplate Spring Steel Cage Nut	2
Plastic License Plate Nuts	4
#14 x 5/8" Zinc License Plate Screw	4
<u>Freedom Front Light Bar and Mesh (Including Air Dam)</u>	<u>Qty</u>
1/4-20 x 5/8 Long, Stainless Steel SBHCS	50
1/4-20 Hex Grade 5 Serrated Flange Nut, Stainless Steel	20
1/4-20 (.093-.126: Panel Range) Zinc Electroplate Spring Steel Cage Nut	30
<u>Freedom Front Formed Sport Bar</u>	<u>Qty</u>
1/4-20 x 5/8 Long, Stainless Steel SBHCS	6
1/4-20 Hex Grade 5 Serrated Flange Nut, Stainless Steel	4
1/4-20 (.093-.126: Panel Range) Zinc Electroplate Spring Steel Cage Nut	2
<u>Freedom Front Fog Light Assembly</u>	<u>Qty:</u>
1/4-20 x 5/8 Long, Stainless Steel SBHCS	12
1/4-20 (.093-.126: Panel Range) Zinc Electroplate Spring Steel Cage Nut	12
<u>Freedom Front 3x3 Cube Light Mounts</u>	<u>Qty:</u>
1/4-20 x 5/8 Long, Stainless Steel SBHCS	16
1/4-20 Hex Grade 5 Serrated Flange Nut, Stainless Steel	16
<u>Freedom Front Mount Kit 17-22 Ford SD</u>	<u>Qty</u>
1/2-13 x 1-1/2 Long, Grade 8 HB Zinc-Black	12
1/2" Washer, Grade 8 Zinc-Yellow	14
1/2" Washer, Grade 8 Zinc-Black	12
1/2"-13 Grade 8 Steel Serrated Flange Nut Zinc	18
1/2"-13 x 1-1/2" Zinc Tear Drop Bolt (Hex)	10
3/8"-16 x 1-1/2" Long, Grade 8 HB	10
3/8" Yellow Zinc Grade 8 Flat Washer	20
3/8"-16 Zinc Grade 8 Serrated Hex Flange Nut	10

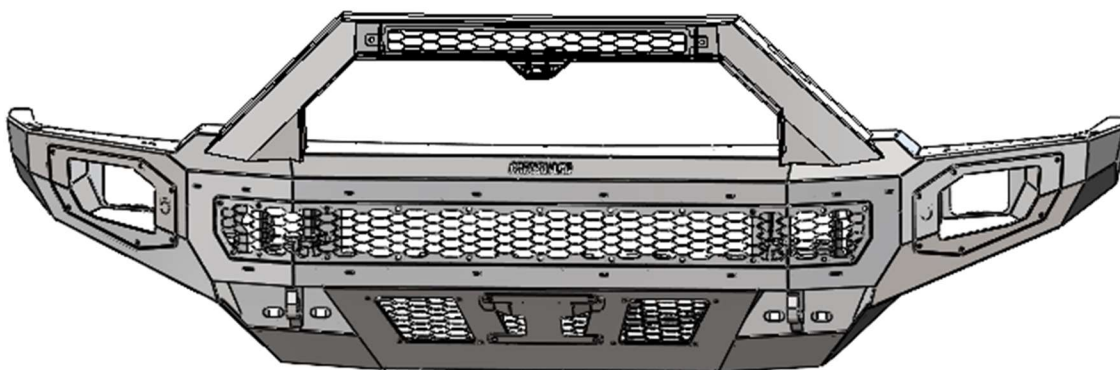
STYLE OPTIONS



Base



Extreme



Sport

CENTER LIGHT BAR CONFIGURATION (*Optional*)



Rigid 130313 E-Series - 30" Bar - Spot/Flood Combo Pattern

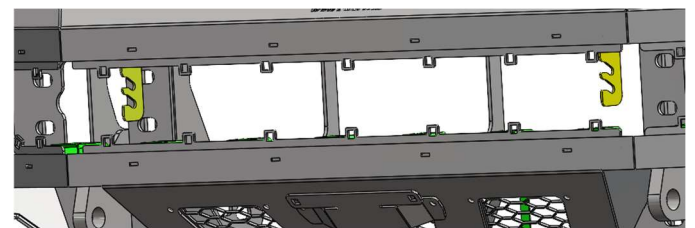
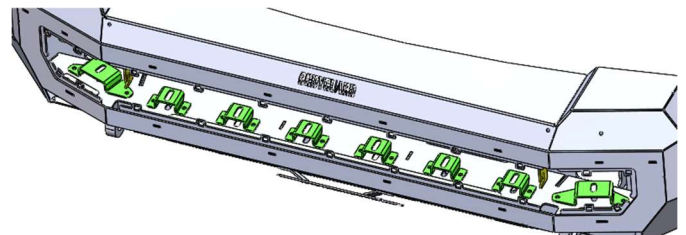


**Rigid 130313 E-Series - 30" Bar - Spot/Flood Combo Pattern
Rigid 202113 D-Series Pro Cube - Flood Pattern - Surface Mount (pair)**



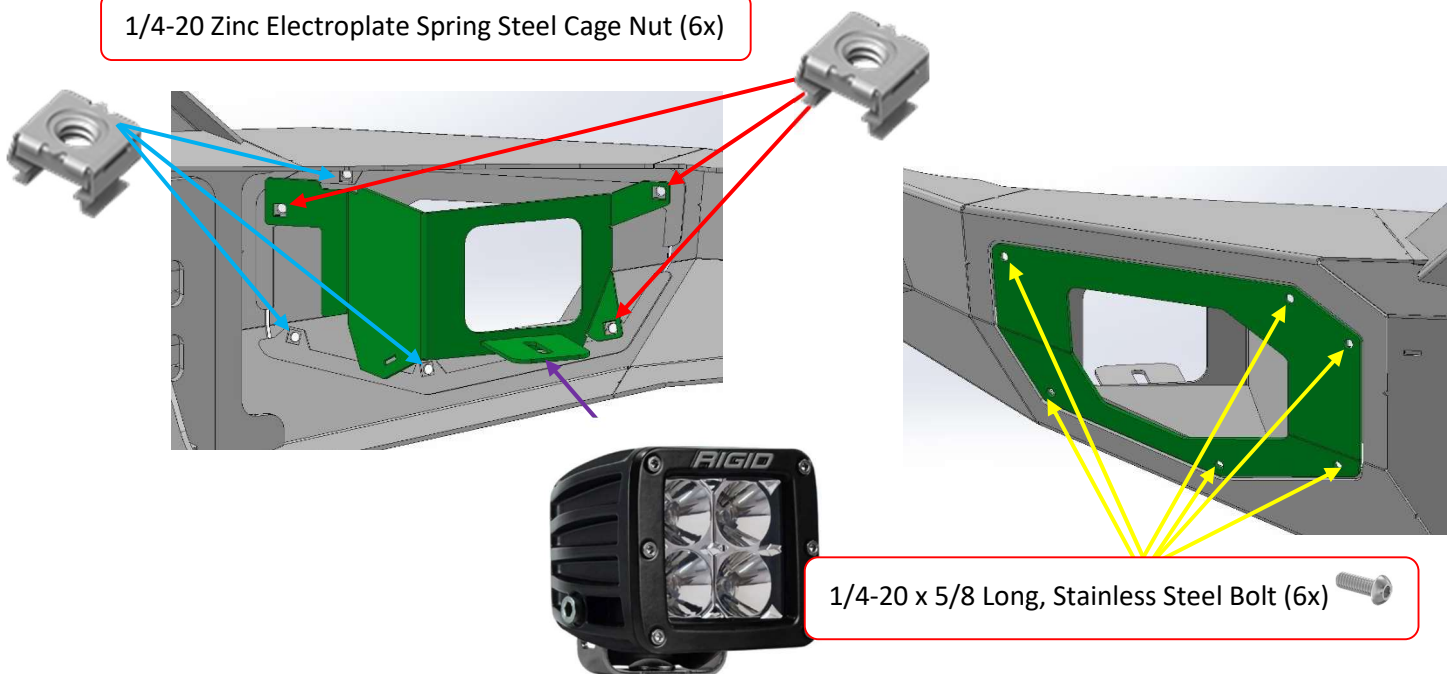
Rigid 321113 D-XL Pro – 4"x4" Cube – Spot or Flood Combo Pattern

1. 3x3 cube lights can be installed using the slotted holes in the brackets pictured in green.
2. 4x4 cube lights do not require mounting brackets.
3. Also, light bar mount brackets (pictured in yellow) are included to allow the use of a 30" light bar.



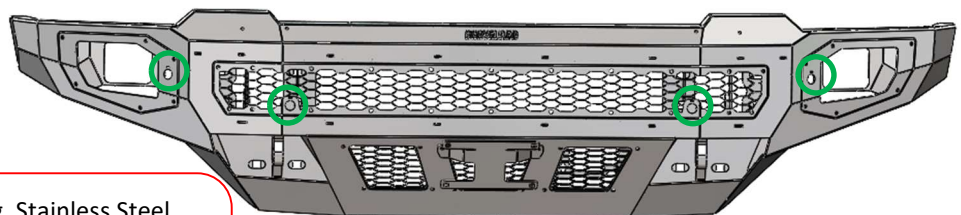
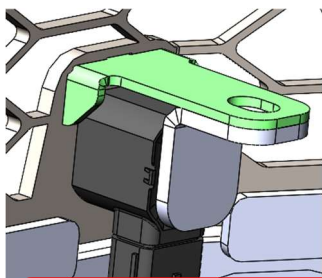
FOG LIGHT INSTALLATION

1. Install cage nuts in fog light trim (**blue arrows**) and the fog light bucket (**red arrows**).
2. Insert button-head screws through fog light plate and into cage nuts and tighten (**yellow arrows**).
3. Cube lights can be secured to the tab on the back of the fog light bucket (**purple arrow**).



PARKING SENSOR INSTALL

1. Then install the sensor tab over the sensor shown below. Slide the sensor and sensor tab into position and tighten down with a 1/4"-20 x 3/4" BHCS. Plug the parking sensors into the harness and let the center mesh and fog light trim rings loosely hang down.



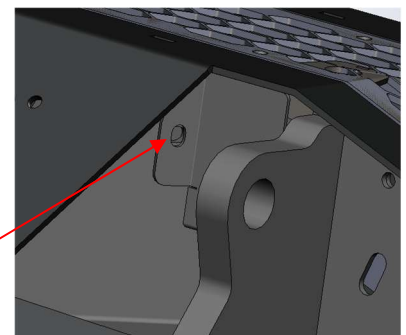
(4) - 1/4-20 x 5/8 Long, Stainless Steel SBHCS



(4) - 1/4-20 Hex Grade 5 Serrated Flange Nut, Stainless Steel

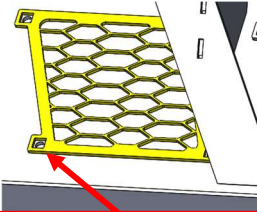
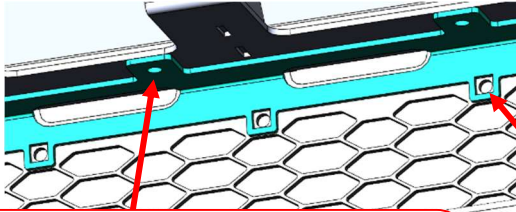
2. Install sensor covers on underside of bumper inside the shackle box using the 1/4" -20 x 5/8" Stainless Steel hardware.

1/4" -20 x 5/8" Stainless SBHCS



MESH PLATE INSTALL

1. Mount brackets for the center mesh are bolt-on components. They should be installed with a total of 18 1/4-20 x 5/8 Long, Stainless Steel Bolts and hex nuts.
2. Install cage nuts into the appropriate holes in the air dam mesh components (12 nuts) and center mesh mount brackets (18 nuts).
3. Use provided 1/4-20 x 5/8 Long, Stainless Steel Bolts (30) to secure mesh plates.



(18) - 1/4-20 x 5/8 Long, Stainless Steel SBHCS



(18) - 1/4-20 Hex Grade 5 Serrated Flange Nut, Stainless Steel



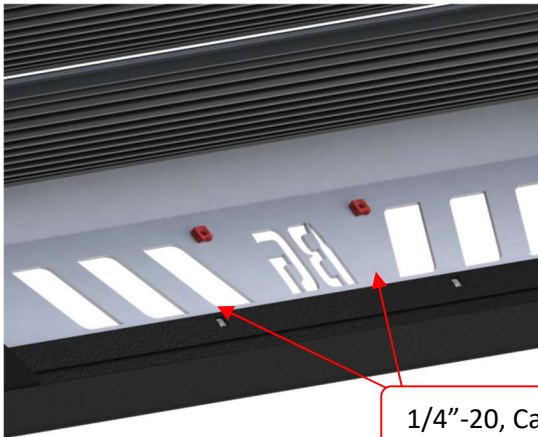
(30) - 1/4-20 (.093-.126: Panel Range) Zinc Electroplate Spring Steel Cage Nut



(30) - 1/4-20 x 5/8 Long, Stainless Steel SBHCS

LICENSE PLATE INSTALL

1. Install (2) 1/4"-20 Cage Nuts into square holes, then the install license plate bracket to the skid plate using (2) 1/4"-20 x 5/8" button head screws



1/4"-20, Cage Nut



1/4"-20 x 5/8", SBHCS

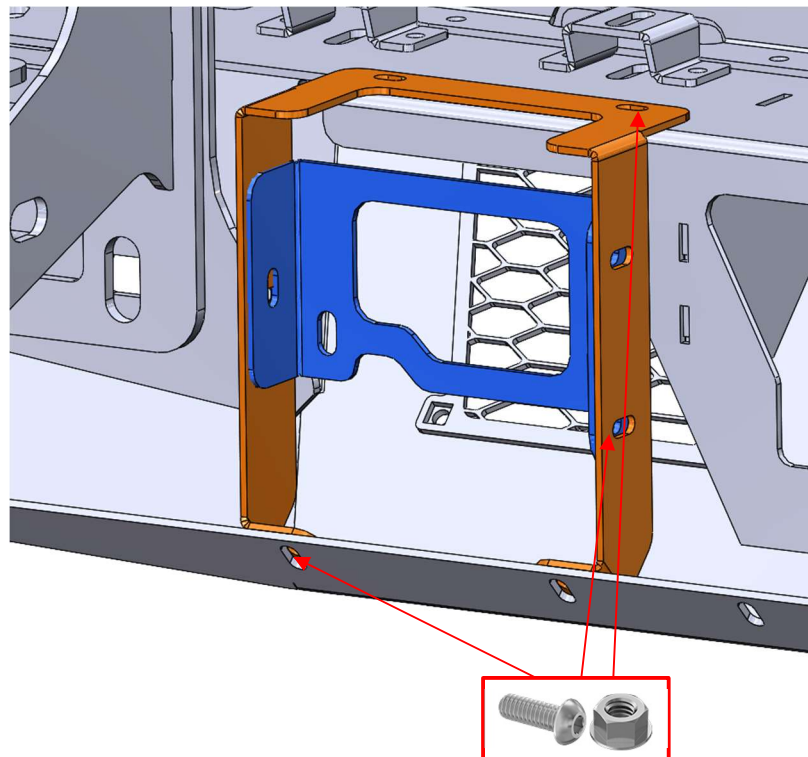
ADAPTIVE CRUISE CONTROL INSTALL

Some vehicles are equipped with an Adaptive Cruise Control unit (ACC). The following steps will show you how to install the unit into your bumper.

NOTE: If the battery is not disconnected prior to removal and installation, it is possible that after installation, the ACC module will have to be recalibrated.

1. Install the ACC module and bracket to the Bodyguard ACC bracket using (3) **(1/4-20 x 5/8 Long, Stainless Steel SBHCS).**
2. Now, install the Bodyguard ACC bracket to the bumper using (4) **(1/4-20 x 5/8 Long, Stainless Steel SBHCS).**

NOTE: Best placement for installation of the ACC bracket is behind the driver side air dam mesh. If installed behind the center air dam mesh then the license plate holder will obstruct the view of the ACC module and it will not function.



3. Once you install the bumper back on the truck, connect the ACC unit back to the factory wiring harness.

Note: It may take up to 50 miles for the ACC unit to calibrate itself.

EXTREME CAMERA INSTALL *(For optional Extreme guard only)*

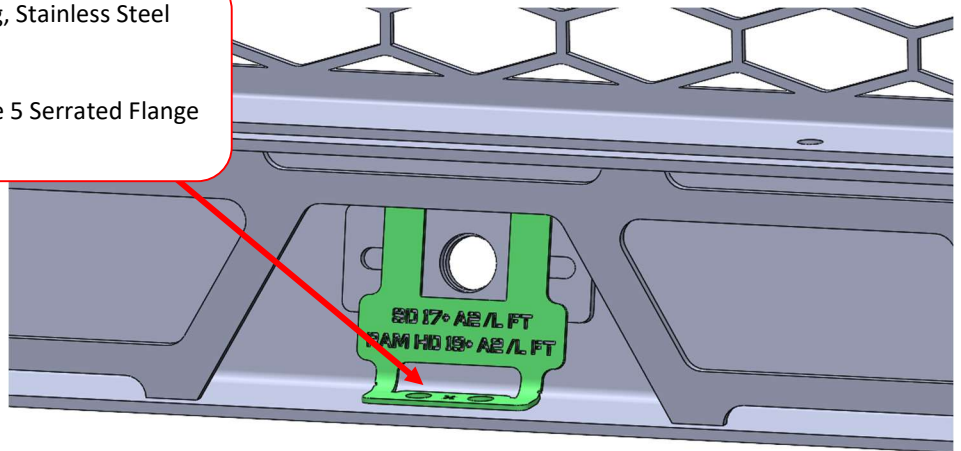
1. Place Camera into square spacer that is welded to the bumper. Then install the blue bracket with **(2) (1/4-20 x 5/8 Long, Stainless Steel SBHCS)** behind the camera. This bracket will press the camera against the spacer securing the camera to the grille guard.



(2) - 1/4-20 x 3/4 Long, Stainless Steel SBHCS

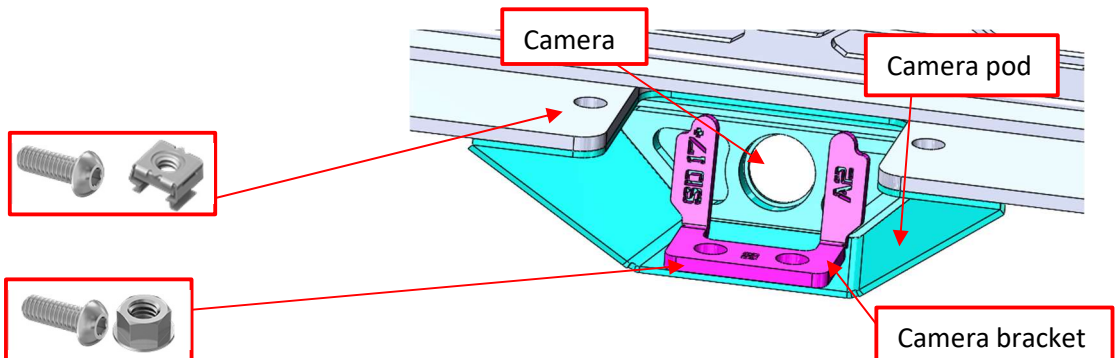


(2) - 1/4-20 Hex Grade 5 Serrated Flange Nut, Stainless Steel

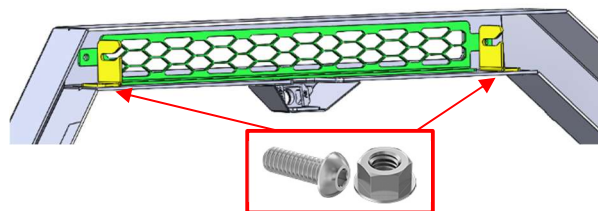


SPORT BAR CAMERA INSTALL *(For optional sport bar only)*

1. Install the camera pod to the sport bar using (2) 1/4"-20 cage nuts and (2) 1/4"-20 x 3/4" BHCS. Then install the camera into the pod and secure with the camera bracket using (2) 1/4"-20 BHCS and flange nuts.

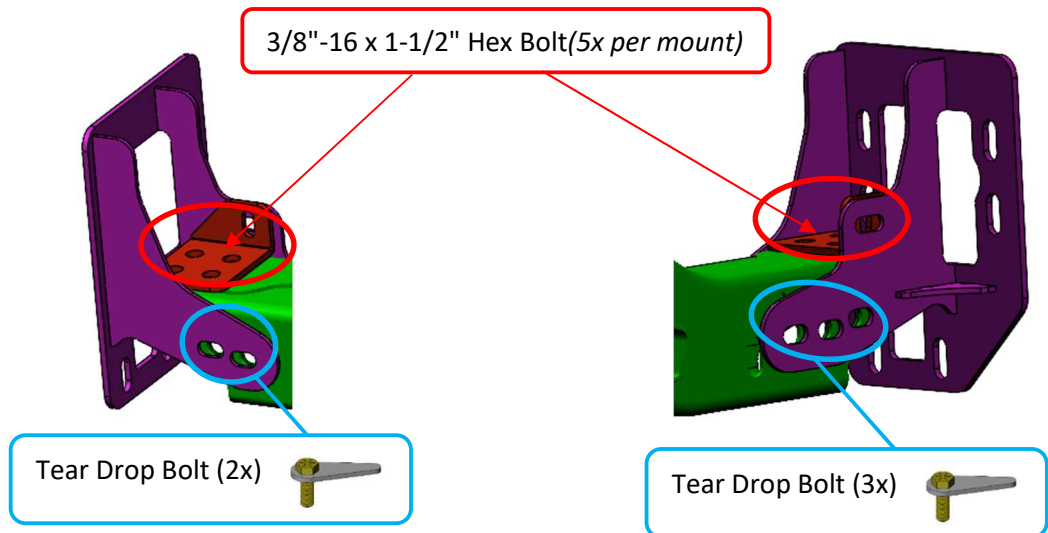


2. Then install the sport bar mesh using (2) 1/4"-20 x 3/4" BHCS and flange nuts. Then install your light bar using the light bar brackets if applicable.



BUMPER INSTALL

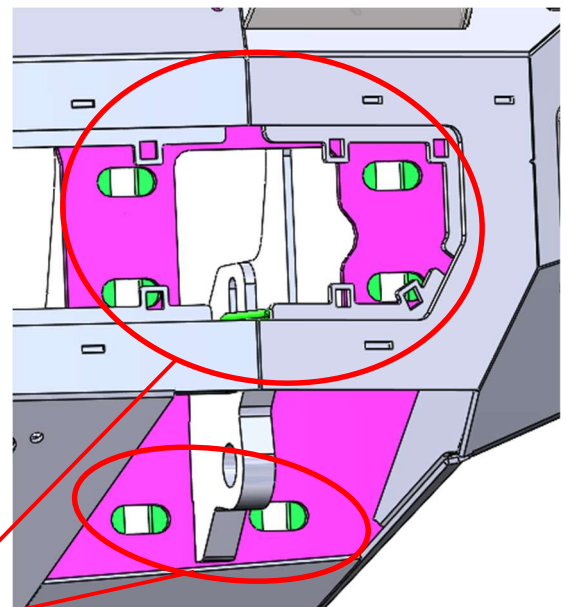
1. When installing the bumper to the truck frame, first bolt the 4 Hole Plate to the frame using the provided 3/8"-16 x 1-1/2" Hex Bolts. Then install the bumper mounts to the frame using the provided 1/2"-13 x 1-1/2" Zinc Tear Drop Bolts.
 - 3x tear drop bolts will be used on the outside holes of each mount.
 - 2x tear drop bolts will be used on the inside holes of each mount.



2. Attach the bumper with the 1/2" black hardware, leaving enough space to adjust the bumper as needed into position. Using a tape measure, adjust the bumper vertically and horizontally to the desired body gaps. Once the bumper is lined up, tighten all hardware for the bumper and the mounts. Using jack stands or an additional person to help support the bumper is recommended.
3. Now that the bumper is mounted and installed, wire in the lighting and plug in the front camera, and ACC module. Route and secure wiring as desired.

NOTE: The camera harness will go under the bumper top plate up through a cut hole in the uprights to the camera mount in the grill.

(6) 1/2-13 x 1-1/2 Long, Grade 8 HB Zinc-BLACK bolts



SAFETY

THE SAFETY OF YOU AND OTHERS IS VERY IMPORTANT TO US!

To minimize this risk and make an informed decision about safety, it is important that you carefully read and follow the installation instructions we have provided.

We urge you to use your own good judgment and allow plenty of time for installation.

HAZARD CHECKLIST

1. Always wear personal protective equipment (PPE) such as: protective eye wear, gloves, close toed shoes, etc.
2. We recommend that you use a certified mechanic or shop for professional installation.
3. Always set emergency brakes on the vehicle and use tire blocks to ensure vehicle stabilization.
4. Use caution when lifting, we recommend the use of equipment to help lift bumpers into place.
5. Use caution when using power tools such as air ratchet, etc.
6. Take caution when installing wiring.
7. Perform regular inspections of hardware, bolts, brackets, etc.
8. Rigid light brackets are specifically designed to fit Rigid lights, we do not guarantee off brand fitment.
9. Our winch mount is designed for Warn and Superwinch products. We do not guarantee off-brand fitment.

USE & RISK

Bodyguard Products LLC is not responsible for damage to our products, or other subsequent damage that might occur because of misuse or improper installation. While we do manufacture products that appear stronger than factory parts, our products should not be viewed or relied upon as life-saving devices in the event of a collision or rollover. We make no claims relating to airbag compatibility, crashworthiness, or sturdiness. It is the customer's responsibility to check with the vehicle manufacturer or auto dealer regarding airbag compatibility and automobile manufacturer's warranty before installing our products.

FINISHING UP

- Install shackles.
- Confirm that all hardware is tightened, and everything is secure.
- Secure wiring harnesses for lights and sensors.
- Test all lighting and wiring before using vehicle (fog lights, sensors, etc.).

MAINTENANCE

- 1) Periodically check that all hardware is tightened and that all wiring and connections are secure.
- 2) Periodically check that all sensor plugs are secure.
- 3) Routinely wash bumper to maintain the powder coat finish.

FEEDBACK

We'd love to hear from you!

Please send your pictures, testimonials, comments, or suggestions to us by email at info@bodyguardbumpers.com. We frequently use customer pictures for brochures and marketing materials, and we always welcome customer feedback to ensure quality improvements within our company. Thanks for your purchase; we appreciate your business very much!

Where STRENGTH Meets *Style!*™



@BodyguardBumpers