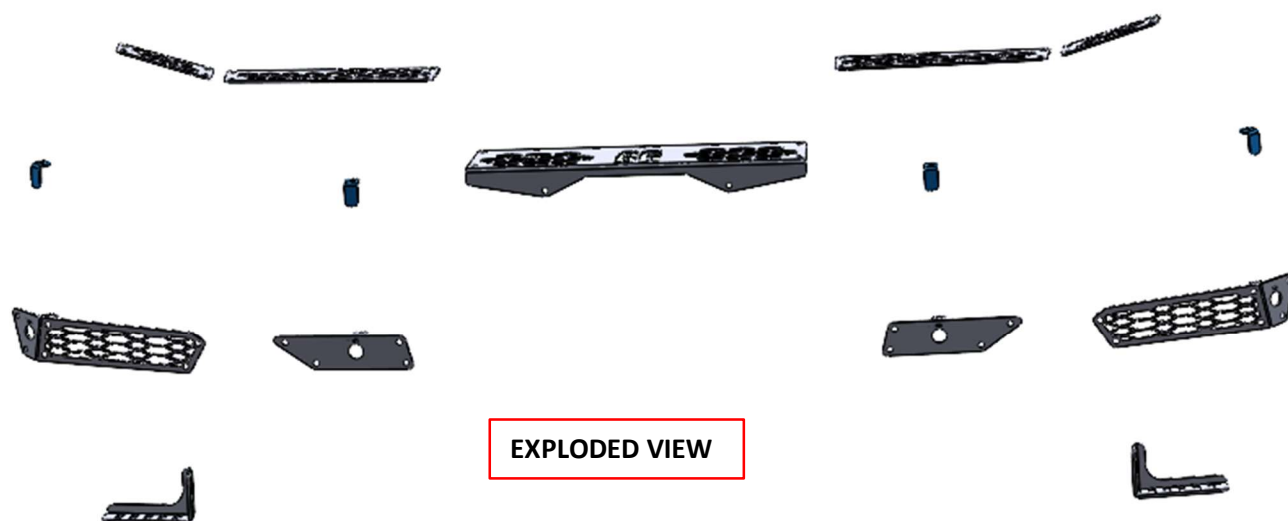
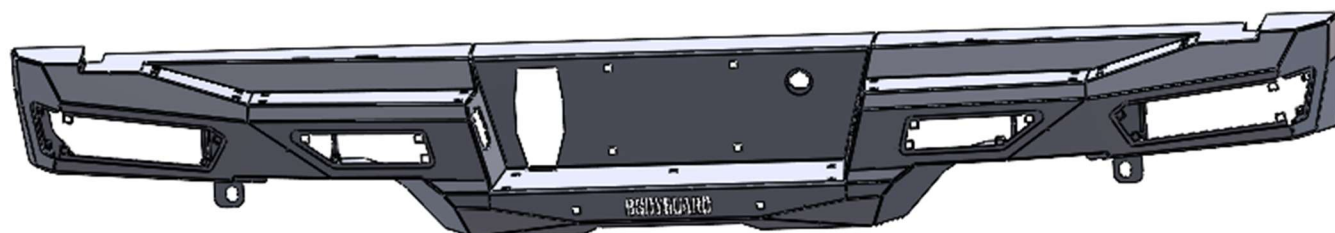
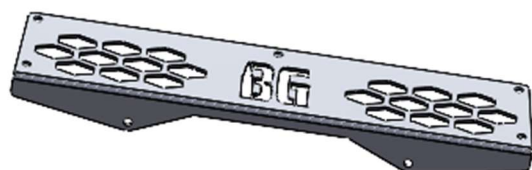
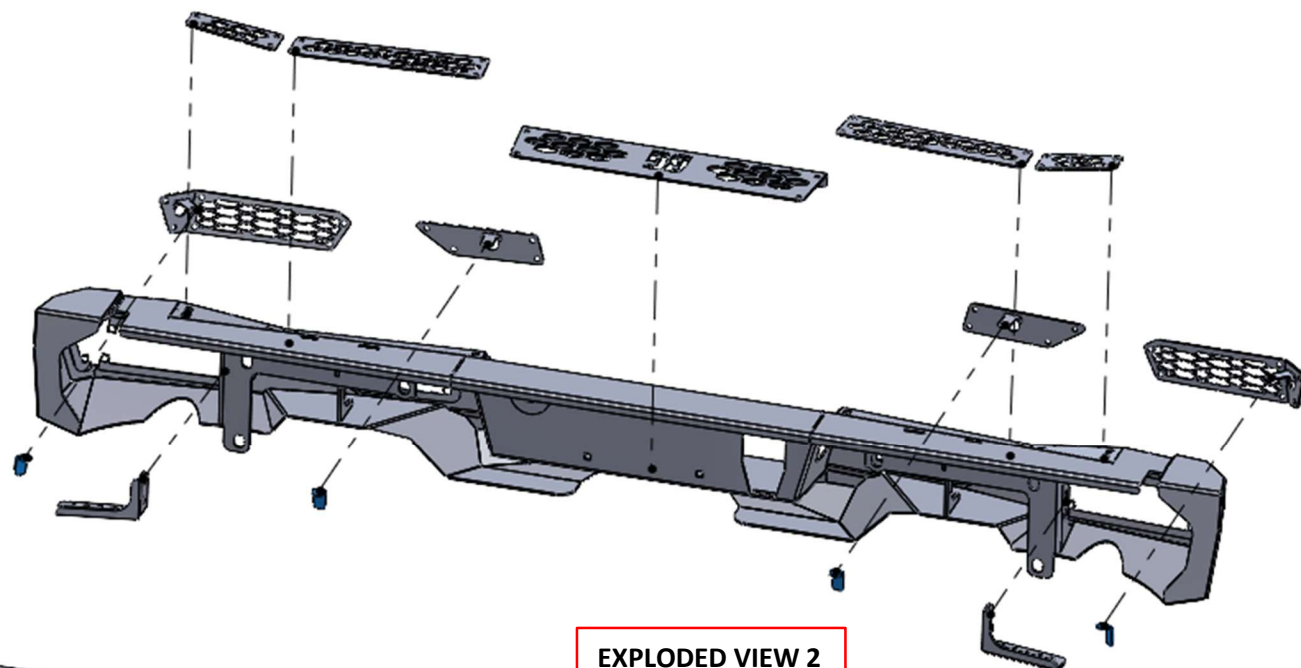


INSTALLATION GUIDE

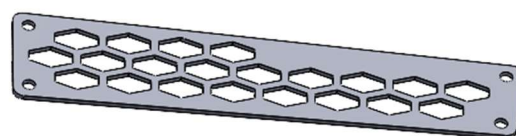
PARTS



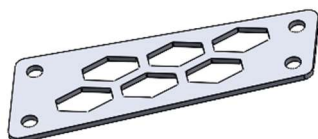
EXPLODED VIEW



Center Step Plate



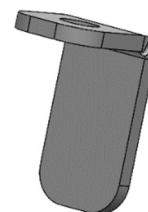
Top Inside Step Plate x 2



Top Outside Step Plate x 2



Driver Inside Sensor Plate



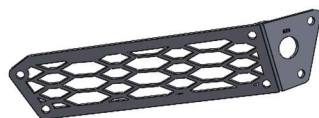
Sensor Tabs x4



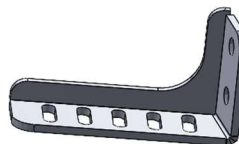
Driver Outside Sensor
Light Mesh Plate



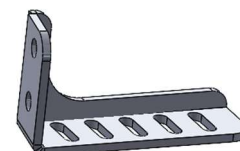
Passenger Inside Sensor Plate



Passenger Outside Sensor
Light Mesh Plate



Driver Light Bracket



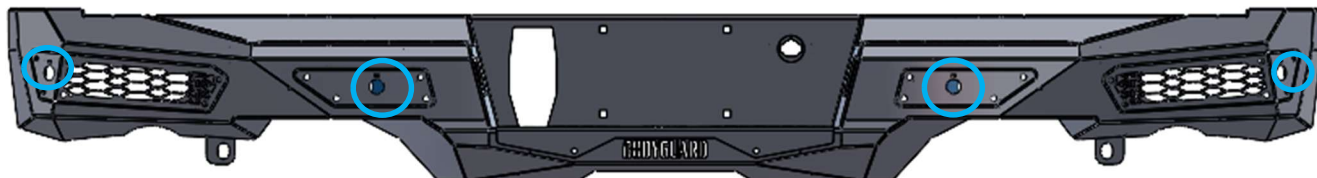
Passenger Light Bracket

HARDWARE

<u>License Plate</u>	<u>Qty</u>
Plastic License Plate Nuts	4
#14 x 5/8" Zinc License Plate Screw	4
<u>Bolt-in Step Pad and Light/Sensor Plates</u>	<u>Qty</u>
1/4-20 x 5/8 Long, Stainless Steel SBHCS	41
1/4-20 (.093-.126: Panel Range) Zinc Electroplate Spring Steel Cage Nut	41
<u>Parking Sensor Brackets</u>	<u>Qty</u>
1/4-20 x 5/8 Long, Stainless Steel SBHCS	4
1/4-20 Hex Grade 5 Serrated Flange Nut, Stainless Steel	4
<u>Light Brackets</u>	<u>Qty</u>
3/8 -16 x 1" Yellow Zinc Grade 8 Hex Bolt	4
3/8 -16 Grade 8 Steel Serrated Flange Nut Zinc	4
3/8" Yellow Zinc Grade 8 Flat Washer	8
<u>Truck and Bumper Mounts</u>	<u>Qty</u>
1/2-13 x 1-1/2 Long, Grade 8 HB Zinc-BLACK	6
1/2" Washer, Grade 8 Zinc-Yellow	6
1/2"-13 Grade 8 Steel Serrated Flange Nut Zinc	6
1/2" BLACK Flat Washer	6

PARKING SENSOR INSTALL (OPTIONAL)

1. If your vehicle is equipped with parking sensors install in the four points indicated below. Ensure that sensors are placed in their original locations based on OEM installation



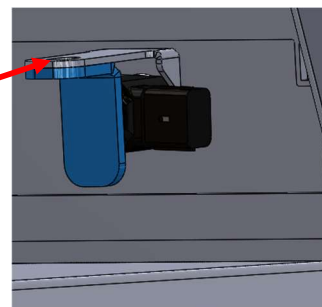
1. Next, install the sensor tab over the sensor as shown. Slide the sensor and sensor tab into position and tighten down with a 1/4"-20 x 5/8" BHCS screw. Plug the parking sensors into the harness and let the center mesh and fog light trim rings loosely hang down.



1x - 1/4-20 x 5/8 Long, Stainless Steel SBHCS

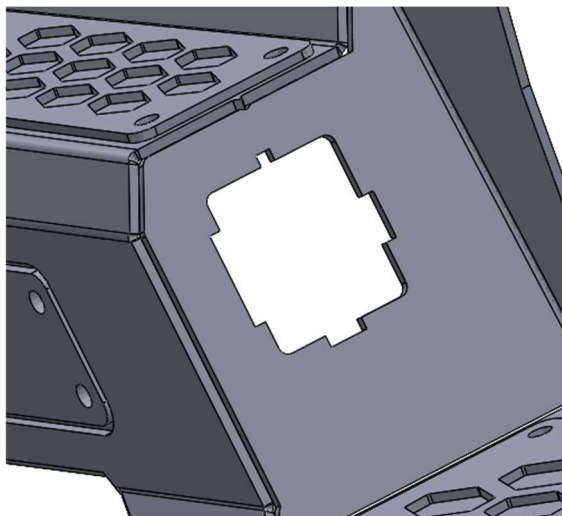


1x - 1/4-20 Hex Grade 5 Serrated Flange Nut, Stainless Steel



TAG LIGHT INSTALL

1. The factory tag light snaps into place, requiring no additional hardware.



LED LIGHT INSTALL

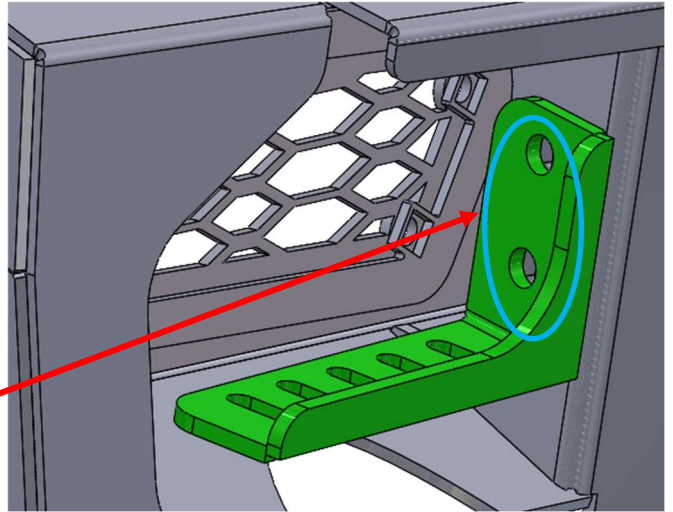
1. The outside mesh sensor plate has a bolt-in light bracket that accepts a variety of aftermarket light options.
2. The bracket attaches to the bumper using (2) 5/16"-18 x 1" Long, Stainless Steel SBHCS and 5/16"-18, Flange nuts per side.
3. The slotted holes can accommodate several different styles of LED lights using OEM hardware.



(2) – 5/16 -18 x 1 Long, Stainless Steel SBHCS

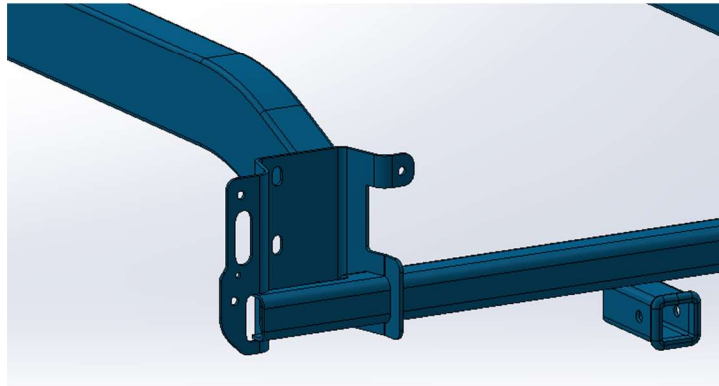
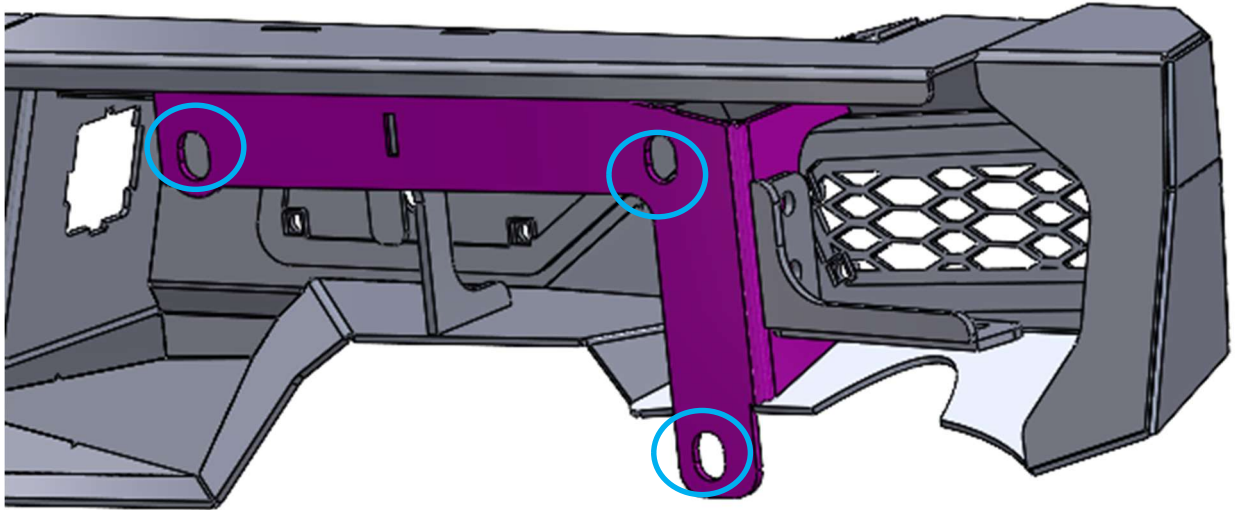


(2) – 5/8 - 18 Hex Grade 5 Serrated Flange Nut, Stainless Steel



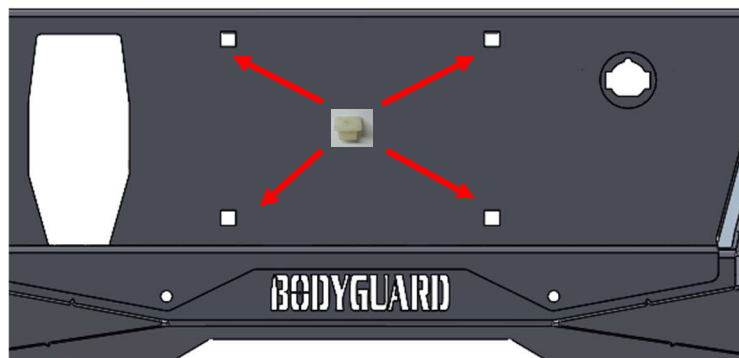
BUMPER INSTALL

1. Attach the bumper to the mounts with the 1/2"-13 x 1-1/2" Black Hex Bolt hardware, leaving enough space to adjust the bumper as needed into position. Using a tape measure, adjust the bumper vertically and horizontally to the desired body gaps. Once the bumper is lined up, tighten all hardware for the bumper and the mounts. Using jack stands or an additional person to help support the bumper is recommended

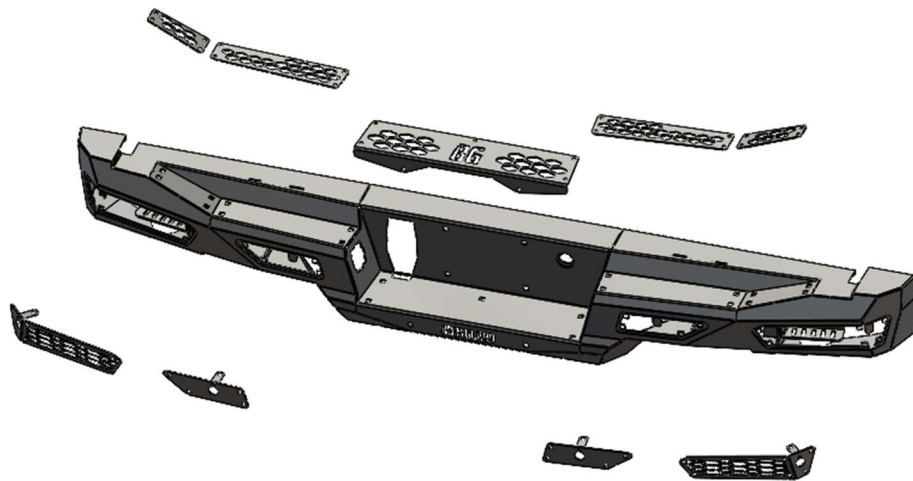


LICENSE PLATE INSTALL

1. Insert Plastic License Plate Nuts into bumper and mount license plate using the License Plate Screw and a power drill.



STEP PADS AND PLATE INSTALL



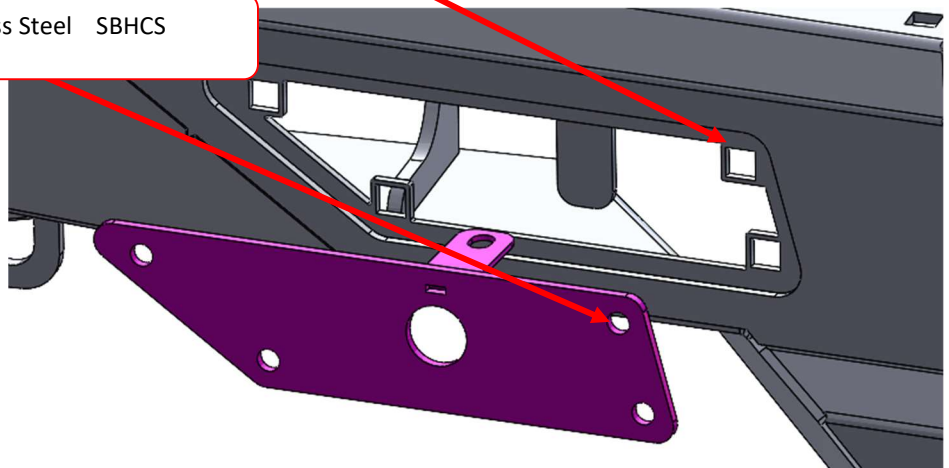
1. For all pictured plates, place cage nuts into square receiver holes. Then use 1/4" screws to attach plates to bumper.



1/4-20 (.093-.126: Panel Range) Zinc
Electroplate Spring Steel Cage Nut



1/4-20 x 5/8 Long, Stainless Steel SBHCS



SAFETY

THE SAFETY OF YOU AND OTHERS IS VERY IMPORTANT TO US!

To minimize this risk and make an informed decision about safety, it is important that you carefully read and follow the installation instructions we have provided.

We urge you to use your own good judgment and allow plenty of time for installation.

HAZARD CHECKLIST

1. Always wear personal protective equipment (PPE) such as: protective eye wear, gloves, close toed shoes, etc.
2. We recommend that you use a certified mechanic or shop for professional installation.
3. Always set emergency brakes on vehicle and use tire blocks to ensure vehicle stabilization.
4. Use caution when lifting, we recommend the use of equipment to help lift bumpers into place.
5. Use caution when using power tools such as air ratchet, etc.
6. Take caution when installing wiring.
7. Perform regular inspections of hardware, bolts, brackets, etc.
8. Rigid light brackets are specifically designed to fit Rigid lights, we do not guarantee off brand fitment.
9. Our winch mount is designed for Warn and Superwinch products. We do not guarantee off-brand fitment.

USE & RISK

Bodyguard Products LLC is not responsible for damage to our products, or other subsequent damage that might occur because of misuse or improper installation. While we do manufacture products that appear stronger than factory parts, our products should not be viewed or relied upon as life-saving devices in the event of a collision or rollover. We make no claims relating to airbag compatibility, crashworthiness, or sturdiness. It is the customer's responsibility to check with the vehicle manufacturer or auto dealer regarding airbag compatibility and automobile manufacturer's warranty before installing our products.

FINISHING UP

- Install shackles.
- Confirm that all hardware is tightened, and everything is secure.
- Secure wiring harnesses for lights and sensors.
- Test all lighting and wiring before using vehicle (fog lights, sensors, etc.).
- Periodically check that all hardware is tightened and that all wiring and connections are secure.
- Periodically check that all sensor plugs are secure.
- Routinely wash bumper to maintain the powder coat finish.

FEEDBACK

We'd love to hear from you!

Please send your pictures, testimonials, comments, or suggestions to us by email at info@bodyguardbumpers.com. We frequently use customer pictures for brochures and marketing materials, and we always welcome customer feedback to ensure quality improvements within our company. Thanks for your purchase; we appreciate your business very much!

Where **STRENGTH** Meets *Style!*™



@BodyguardBumpers