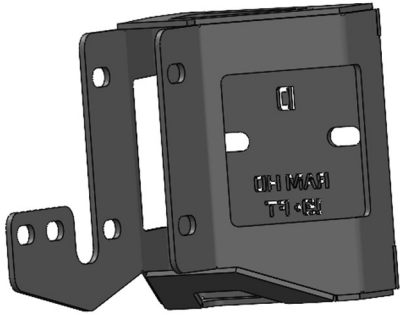


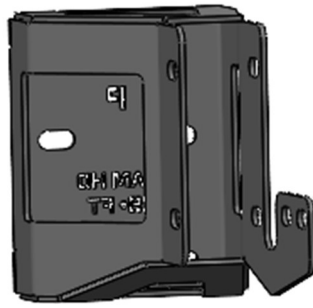
INSTALLATION GUIDE

PARTS

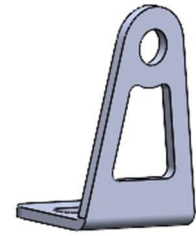




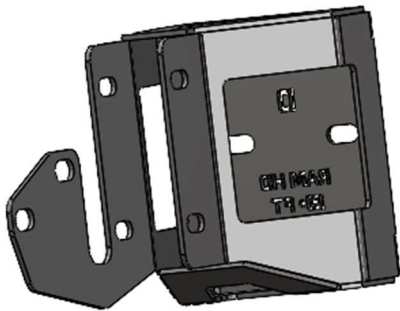
**Driver Side Truck Mount
2500-3500**



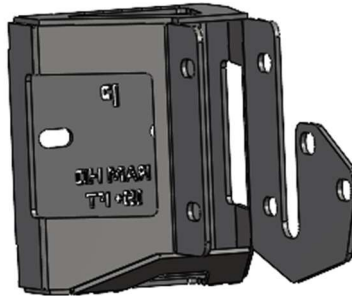
**Passenger Side Truck Mount
2500-3500**



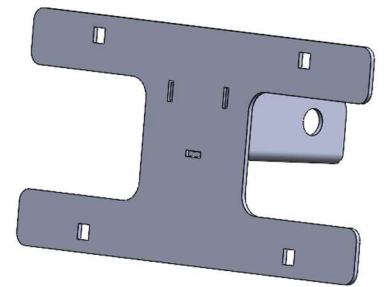
Light Bar Mount x2



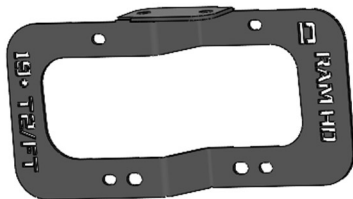
**Driver Side Truck Mount
4500-5500**



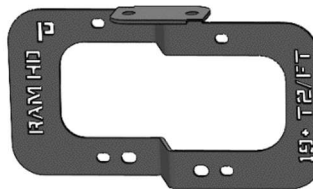
**Passenger Side Truck Mount
4500-5500**



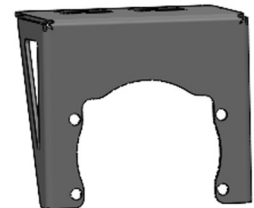
Receiver License Plate Bracket



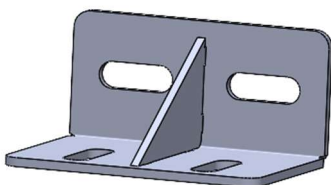
**Driver Side Fog Light Bracket
(OEM Rectangle)**



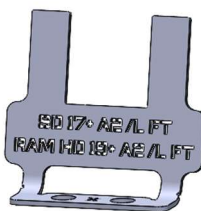
**Passenger Side Fog Light
Bracket (OEM Rectangle)**



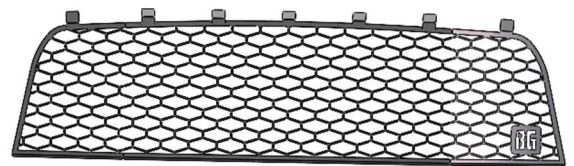
**Fog Light Bracket
(OEM Round) x2**



Fog Light Bracket Mount x2



Camera Bracket



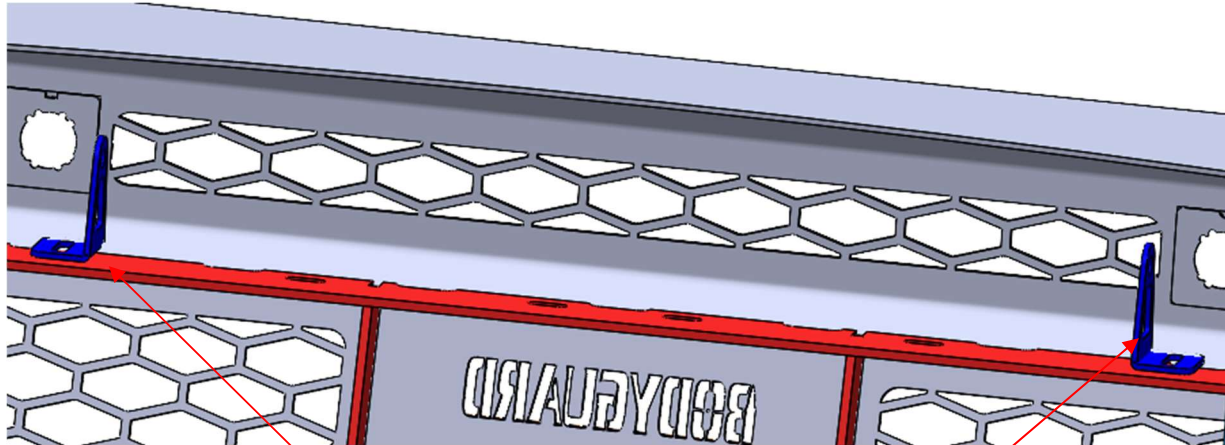
Extreme Guard Mesh

HARDWARE

FT-HK-GGC	<u>Grill Guard Camera</u>	<u>Qty</u>
	1/4-20 x 5/8 Long, Stainless Steel SBHCS	2
	1/4-20 Hex Grade 5 Serrated Flange Nut, Stainless Steel	2
FT-HK-GGM	<u>Grill Guard Mesh</u>	<u>Qty</u>
	1/4-20 x 5/8 Long, Stainless Steel SBHCS	4
	1/4-20 Hex Grade 5 Serrated Flange Nut, Stainless Steel	4
FT-HK-FLP	<u>FT Front License Plate</u>	<u>Qty</u>
	Plastic License Plate Nuts	4
	#14 x 5/8" Zinc License Plate Screw	4
FT-HK-LBM	<u>FT Front Light Bar Mount</u>	<u>Qty</u>
	1/4"-20 Hex Grade 5 Serrated Flange Nut, Stainless	2
	1/4" Zinc Grade 5 Flat Washer	2
	1/4" -20 x 3/4" Long, Stainless Steel SBHCS	2
FT-HK-DFL19	<u>FT Front Mount Kit 2019+ RAM HD</u>	<u>Qty</u>
	1/2-13 x 3-1/2 Long, Grade 8 HB Zinc-Yellow	4
	1/2" Washer, Grade 8 Zinc-Yellow	8
	1/2"-13 x 1-1/4" Black Hex Bolt	8
	1/2" Stainless Steel Flat Washer	8
	1/2" Black Flat Washer	8
	1/2"-13 Grade 8 Steel Serrated Flange Nut Zinc	12
	5/16"-18 x 1" Zinc Grade 5 Hex Bolt	10
	5/16" Zinc Grade 5 Flat Washer	18
	5/16"-18 Zinc Grade 8 Serrated Hex Flange Nut	10
	1/4-20 x 3/4" Long, Stainless Steel SBHCS	8
	1/4-20 Hex Grade 5 Serrated Flange Nut, Stainless	8
	Sensor Plug 9696 27mm	6
	Camera Plug 21 mm	1

LIGHT BAR INSTALL

1. Install the light bar using the pictured bracket and 1/4" hardware.



(2) - 1/4-20 x 5/8 Long, Stainless Steel SBHCS

(2) - 1/4-20 Hex Grade 5 Serrated Flange Nut, Stainless Steel

OEM RECTANGLE FOG LIGHT INSTALL

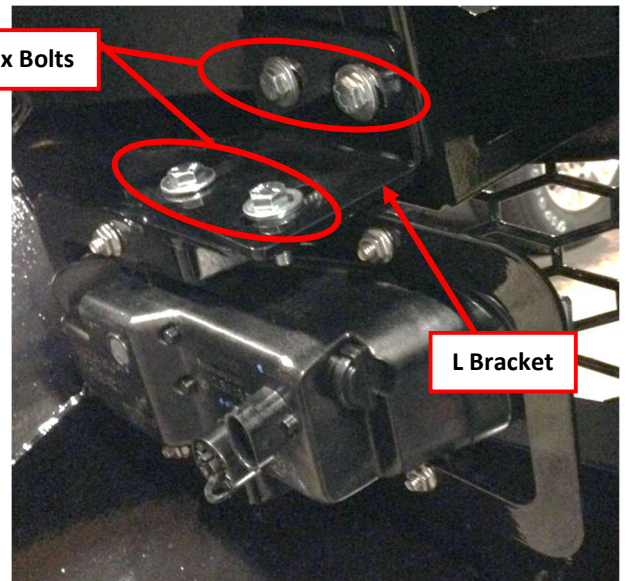
1. (a.) First attach the fog light to mounting bracket with 1/4" button head bolts. (b.) Then attach the fog light bracket to the L bracket using 5/16" bolts. Attach the L bracket and Fog Light Bracket to the bumper with 5/16" bolts, adjust the light and tighten before install.

(b.)

5/16"-18 x 1" Zinc Grade 5 Hex Bolts

(a.)

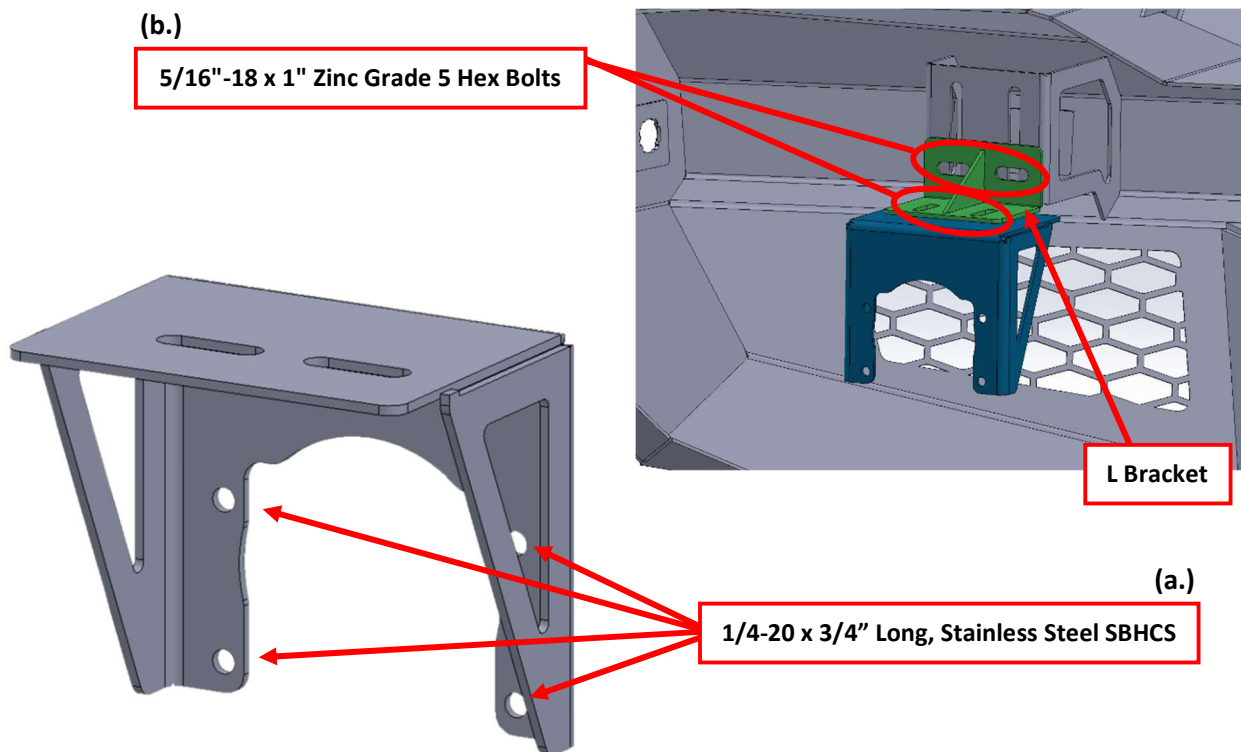
1/4-20 x 3/4" Long, Stainless Steel SBHCS



L Bracket

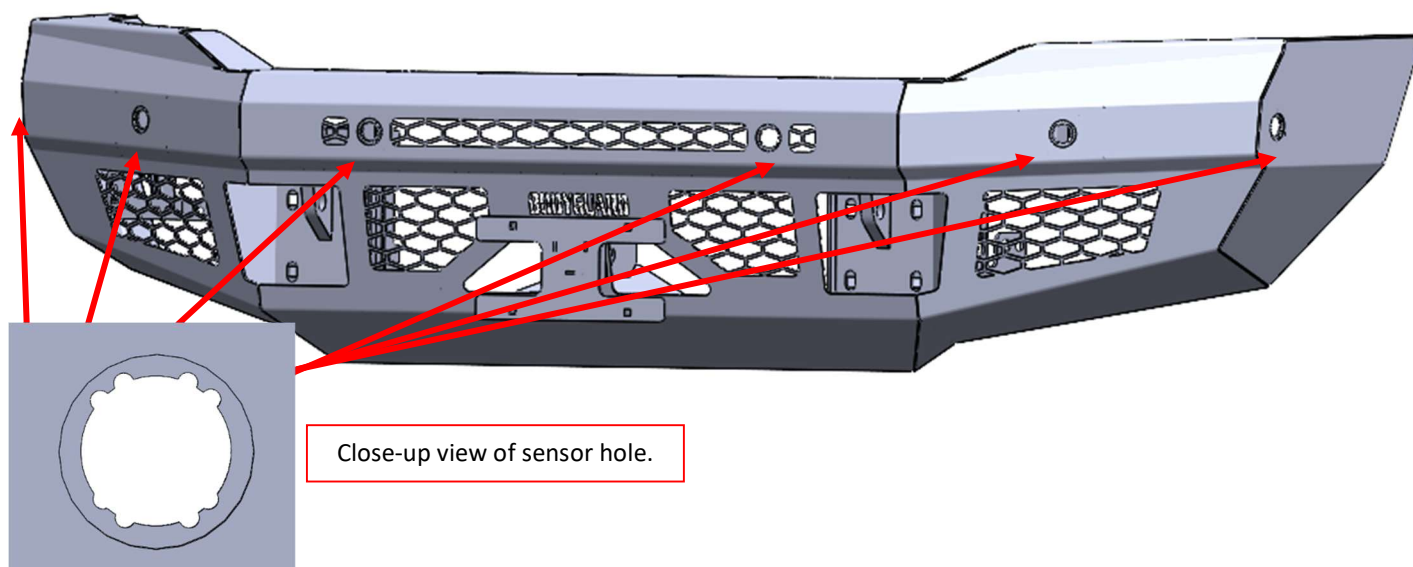
OEM ROUND FOG LIGHT INSTALL

1. **(a.)** First attach the fog light to mounting bracket with 1/4" button head bolts. **(b.)** Then attach the fog light bracket to the L bracket using 5/16" bolts. Attach the L bracket and Fog Light Bracket to the bumper with 5/16" bolts, adjust the light and tighten before install.



SENSOR INSTALL

1. If your vehicle is equipped with parking sensors, use the factory sensors and bezels to install in the six ports indicated above. Note that the two outer ports have different notched configurations to correspond to the appropriate bezel.



SENSOR PLUG INSTALL

1. If your vehicle is not equipped with parking sensors, install the provided plugs and install them into the parking sensor holes. Install fog light pods onto the fog light buckets, then install the fog light buckets onto the bumper along with the sensor plate for the fog lights. Be sure to plug in the sensor to the harness before installing.



Parking sensor plug

CAMERA BRACKET INSTALL (OPTIONAL)

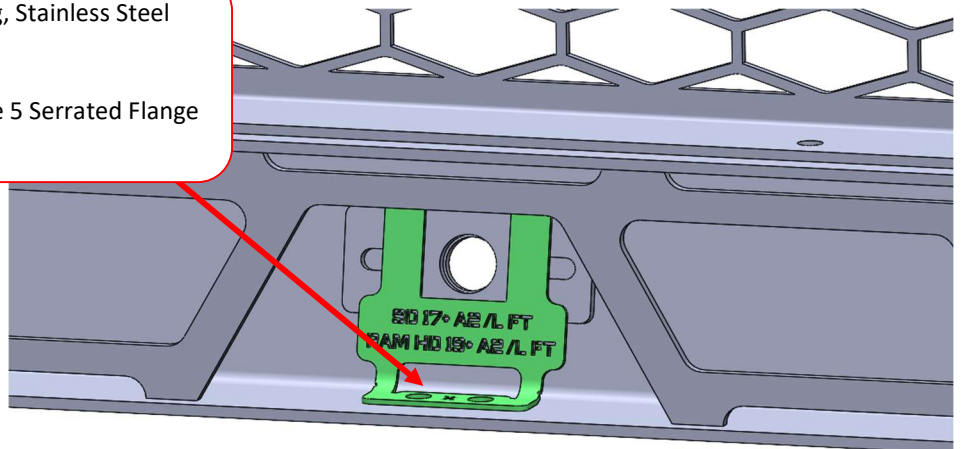
1. Place Camera into square spacer that is welded to the bumper. Then install the blue bracket with **(2) (1/4-20 x 5/8 Long, Stainless Steel SBHCS)** behind the camera. This bracket will press the camera against the spacer securing the camera to the grille guard.



(2) - 1/4-20 x 3/4 Long, Stainless Steel SBHCS



(2) - 1/4-20 Hex Grade 5 Serrated Flange Nut, Stainless Steel

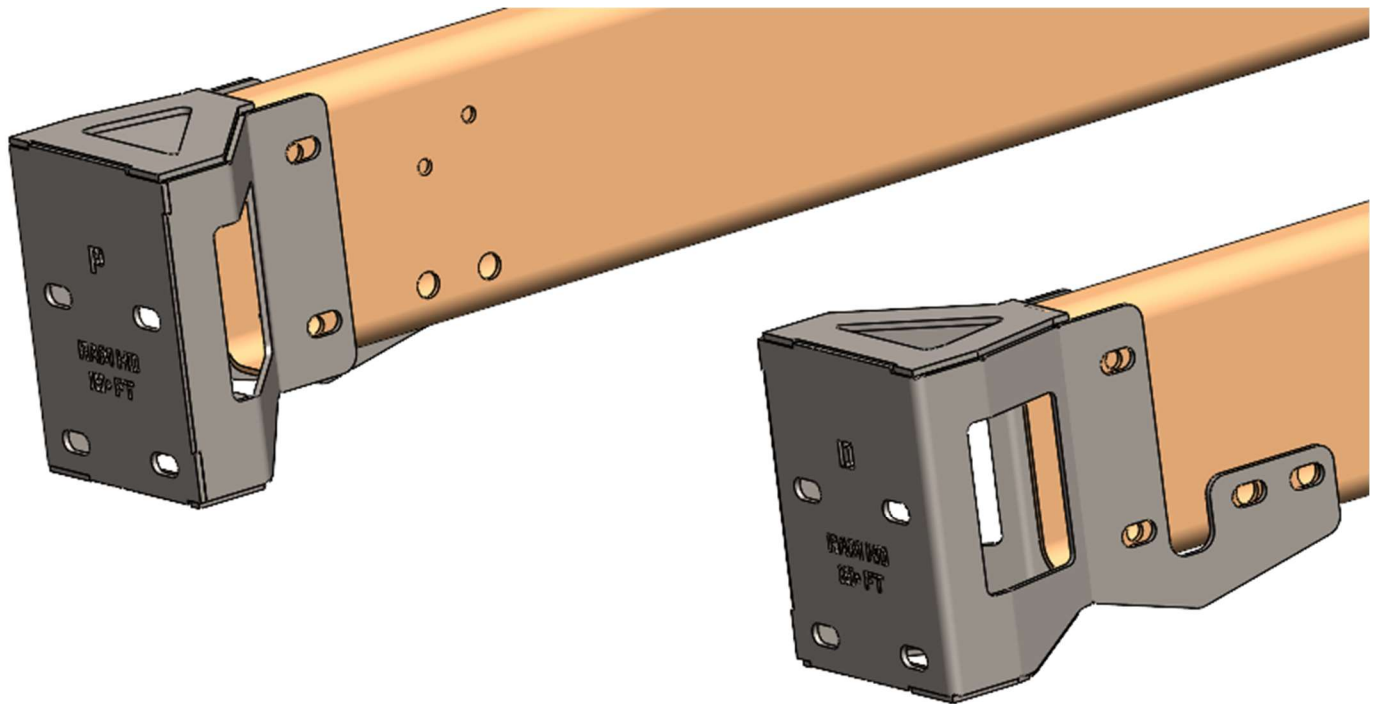
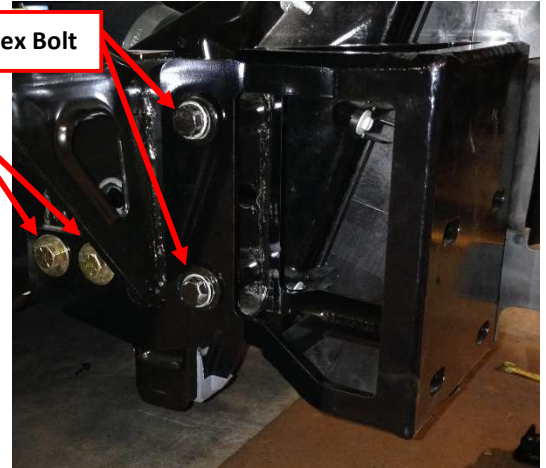


BUMPER MOUNT INSTALL

1. Attach the truck mounts with the 1/2" stainless hardware, leaving enough space to adjust as needed.

1/2"-13 x 3 1/2" Yellow Zinc Grade 8 Hex Bolt

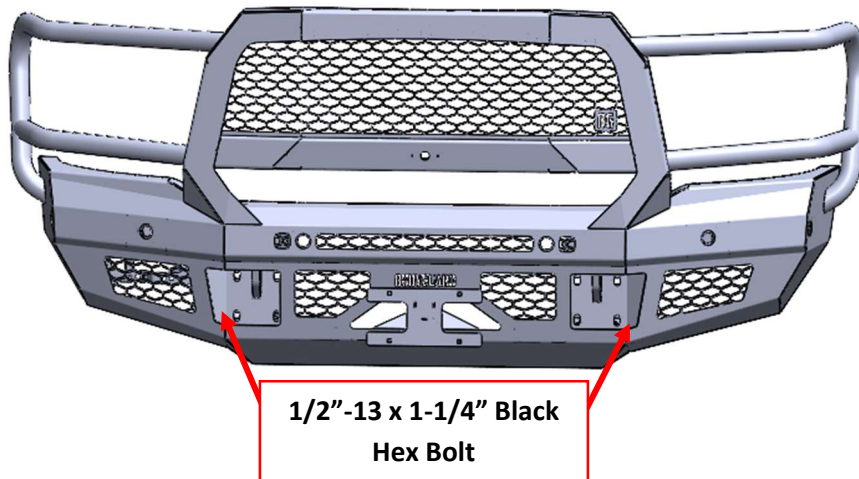
1/2"-13 x 3 1/2" Yellow Zinc Grade 8 Hex Bolt



BUMPER INSTALLATION

1. Attach the bumper with the 1/2" black hardware, leaving enough space to adjust the bumper as needed into position. Using a tape measure, adjust the bumper vertically and horizontally to the desired body gaps. Once the bumper is lined up, tighten all hardware for the bumper and the mounts. Using jack stands or an additional person to help support the bumper is recommended.
2. Now that the bumper is mounted and installed, plug in the factory fog lights, front camera and wire in the light bar. Route and secure wiring as desired.

NOTE: The camera harness will go under the bumper top plate up through a cut hole in the uprights to the camera mount in the grill.



SAFETY

THE SAFETY OF YOU AND OTHERS IS VERY IMPORTANT TO US!

To minimize this risk and make an informed decision about safety, it is important that you carefully read and follow the installation instructions we have provided.

We urge you to use your own good judgment and allow plenty of time for installation.

HAZARD CHECKLIST

1. Always wear personal protective equipment (PPE) such as: protective eye wear, gloves, close toed shoes, etc.
2. We recommend that you use a certified mechanic or shop for professional installation.
3. Always set emergency brakes on vehicle and use tire blocks to ensure vehicle stabilization.
4. Use caution when lifting, we recommend the use of equipment to help lift bumpers into place.
5. Use caution when using power tools such as air ratchet, etc.
6. Take caution when installing wiring.
7. Perform regular inspections of hardware, bolts, brackets, etc.
8. Rigid light brackets are specifically designed to fit Rigid lights, we do not guarantee off brand fitment.
9. Our winch mount is designed for Warn and Superwinch products. We do not guarantee off-brand fitment.

USE & RISK

Bodyguard Products LLC is not responsible for damage to our products, or other subsequent damage that might occur because of misuse or improper installation. While we do manufacture products that appear stronger than factory parts, our products should not be viewed or relied upon as life-saving devices in the event of a collision or rollover. We make no claims relating to airbag compatibility, crashworthiness, or sturdiness. It is the customer's responsibility to check with the vehicle manufacturer or auto dealer regarding airbag compatibility and automobile manufacturer's warranty before installing our products.

FINISHING UP

- Install shackles.
- Confirm that all hardware is tightened, and everything is secure.
- Secure wiring harnesses for lights and sensors.
- Test all lighting and wiring before using vehicle (fog lights, sensors, etc.).
- Periodically check that all hardware is tightened and that all wiring and connections are secure.
- Periodically check that all sensor plugs are secure.
- Routinely wash bumper to maintain the powder coat finish.

FEEDBACK

We'd love to hear from you!

Please send your pictures, testimonials, comments, or suggestions to us by email at info@bodyguardbumpers.com. We frequently use customer pictures for brochures and marketing materials, and we always welcome customer feedback to ensure quality improvements within our company. Thanks for your purchase; we appreciate your business very much!

Where **STRENGTH** Meets *Style!*™



@BodyguardBumpers