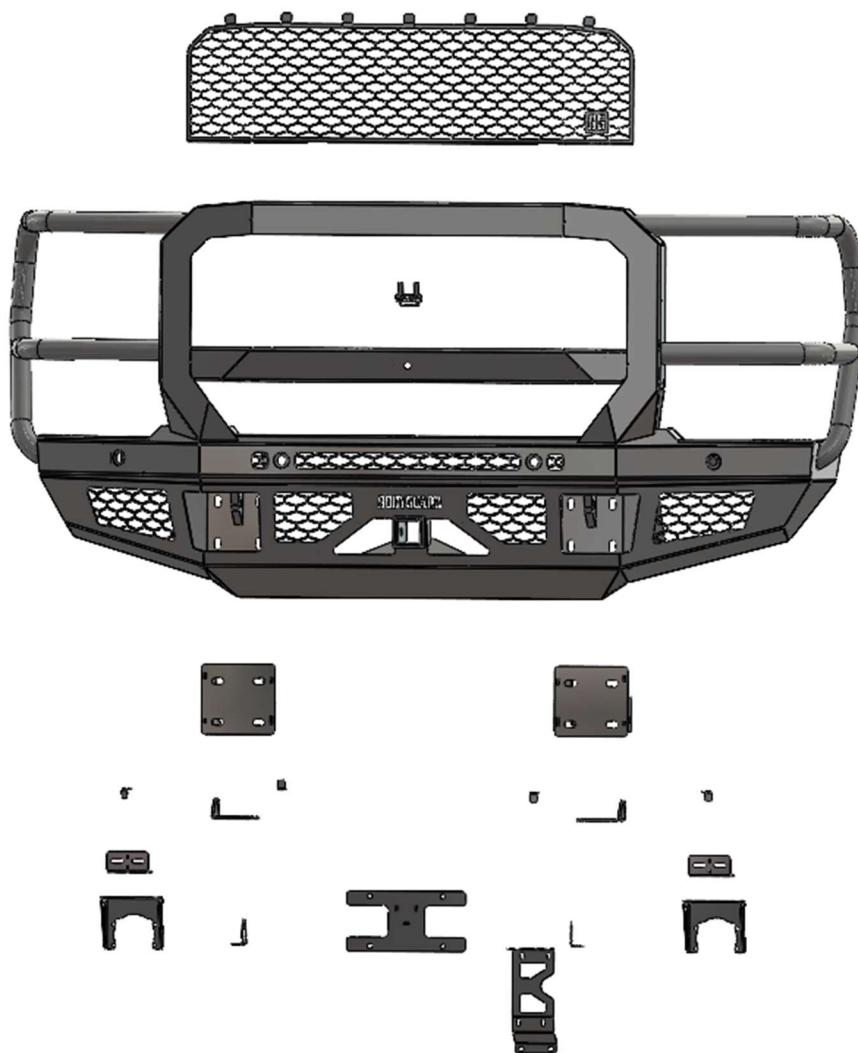
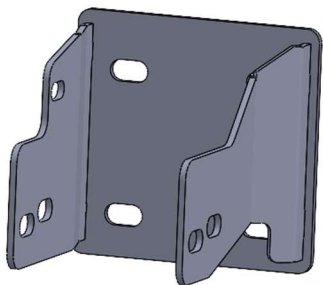


# INSTALLATION GUIDE

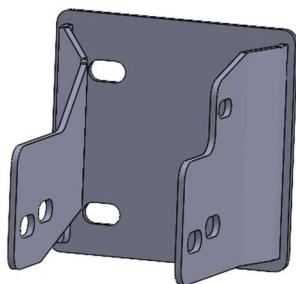
## PARTS



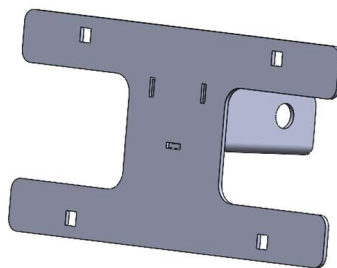
Exploded View



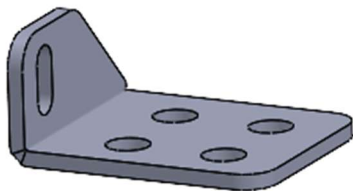
**Driver Side Truck Mount**



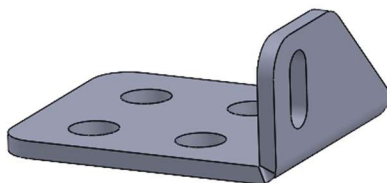
**Passenger Side Truck**



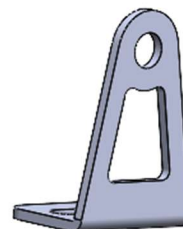
**Receiver License Plate Bracket**



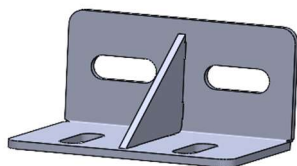
**Driver Side Four Hole Plate**



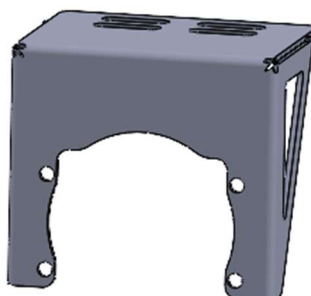
**Passenger Side Four Hole Plate**



**Light Bar Mount x2**



**Fog Light Bracket Mount x2**



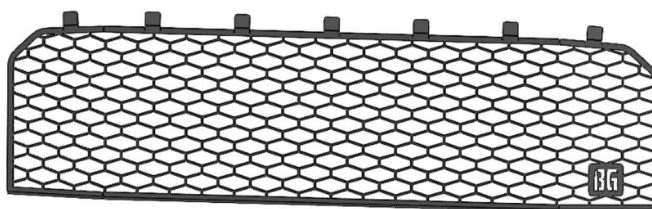
**Fog Light Bracket x2**



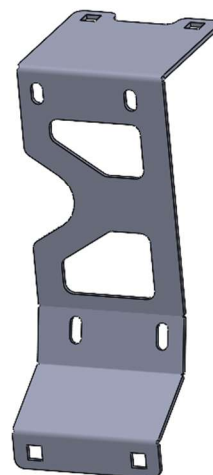
**Small Sensor Mount Bracket x4**



**Camera Bracket**



**Extreme Guard Mesh**



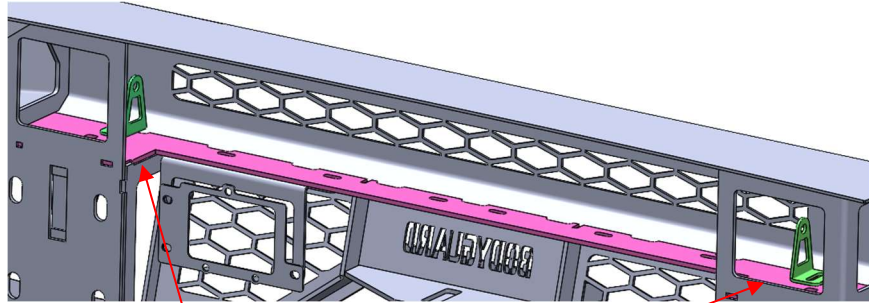
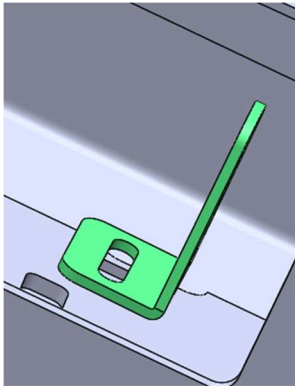
**ACC Mount Bracket**

# HARDWARE

FT-HK-GGC	<b><u>Grill Guard Camera</u></b>	<b><u>Qty</u></b>
	1/4-20 x 5/8 Long, Stainless Steel SBHCS	2
	1/4-20 Hex Grade 5 Serrated Flange Nut, Stainless Steel	2
FT-HK-GGM	<b><u>Grill Guard Mesh</u></b>	<b><u>Qty</u></b>
	1/4-20 x 5/8 Long, Stainless Steel SBHCS	4
	1/4-20 Hex Grade 5 Serrated Flange Nut, Stainless Steel	4
FT-HK-FLP	<b><u>FT Front License Plate</u></b>	<b><u>Qty</u></b>
	Plastic License Plate Nuts	4
	#14 x 5/8" Zinc License Plate Screw	4
FT-HK-LBM	<b><u>FT Front Light Bar Mount</u></b>	<b><u>Qty</u></b>
	1/4-20 Hex Grade 5 Serrated Flange Nut, Stainless	2
	1/4" Zinc Grade 5 Flat Washer	2
	1/4-20 x 3/4" Long, Stainless Steel SBHCS	2
FT-HK-FFH17	<b><u>FT Front Mount Kit 2023 Ford SD</u></b>	<b><u>Qty</u></b>
	1/2-13 x 1-1/2" Long, Grade 8 HB Zinc-Yellow	8
	1/2" Washer, Grade 8 Zinc-Yellow	16
	1/2"-13 x 1-1/4" Black Hex Bolt	8
	1/2" Stainless Steel Flat Washer	8
	1/2" Black Flat Washer	8
	1/2"-13 Grade 8 Steel Serrated Flange Nut Zinc	16
	3/8"-16 x 1-1/4" Long, Grade 8 HB	2
	3/8" Yellow Zinc Grade 8 Flat Washer	4
	3/8"-16 Zinc Grade 8 Serrated Hex Flange Nut	2
	5/16"-18 x 1" Zinc Grade 5 Hex Bolt	8
	5/16" Zinc Grade 5 Flat Washer	16
	5/16"-18 Zinc Grade 8 Serrated Hex Flange Nut	8
	1/4-20 x 5/8 Long, Stainless Steel SBHCS	8
	1/4-20 Hex Grade 5 Serrated Flange Nut, Stainless	4
	1/4-20 (.093-.126: Panel Range) Zinc Electroplate	4
	Spring Steel Cage Nut	4
ACC	<b><u>FT Front ACC Kit 2023 Ford SD</u></b>	<b><u>Qty</u></b>
	1/4-20 x 5/8 Long, Stainless Steel SBHCS	4
	1/4-20 Hex Grade 5 Serrated Flange Nut, Stainless	4
	5/16"-18 x 1" Zinc Grade 5 Hex Bolt	4
	5/16" Zinc Grade 5 Flat Washer	4
	5/16"-18 Zinc Grade 8 Serrated Hex Flange Nut	4

## LIGHT BAR INSTALL

1. Install the light bar using the pictured brackets and 1/4" hardware.



(2) - 1/4-20 x 5/8 Long, Stainless Steel  
SBHCS



(2) - 1/4-20 Hex Grade 5 Serrated Flange  
Nut, Stainless Steel

## FACTORY FOG LIGHT INSTALL

1. Start by installing the OEM fog lights and light bar option.
2. Remove the fog light from the factory bumper and bracket and install onto the provided bracket shown below.



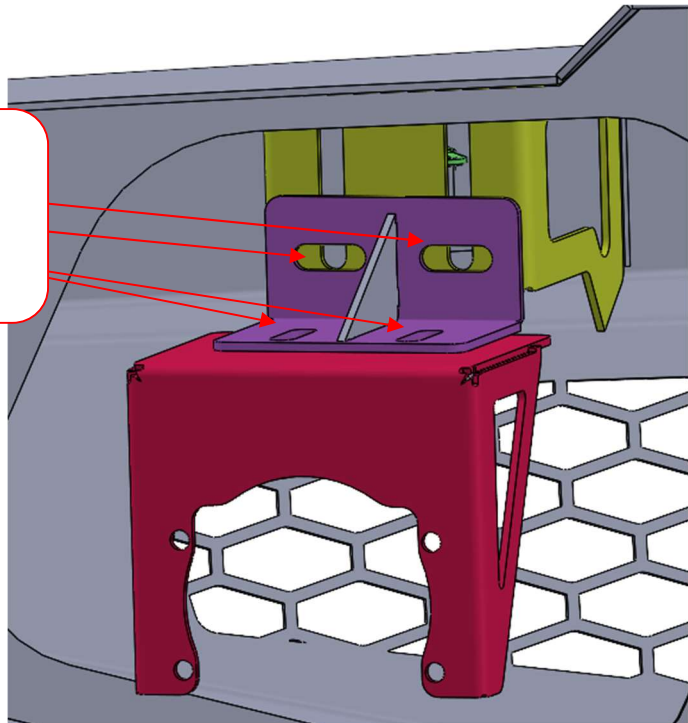
(4) - 5/16"-16 x 1" Yellow Zinc Grade 8 Hex Bolt



(8) - 5/16" Yellow Zinc Grade 8 Flat Washer



(4) - 5/16"-16 Zinc Grade 8 Serrated Hex Flange

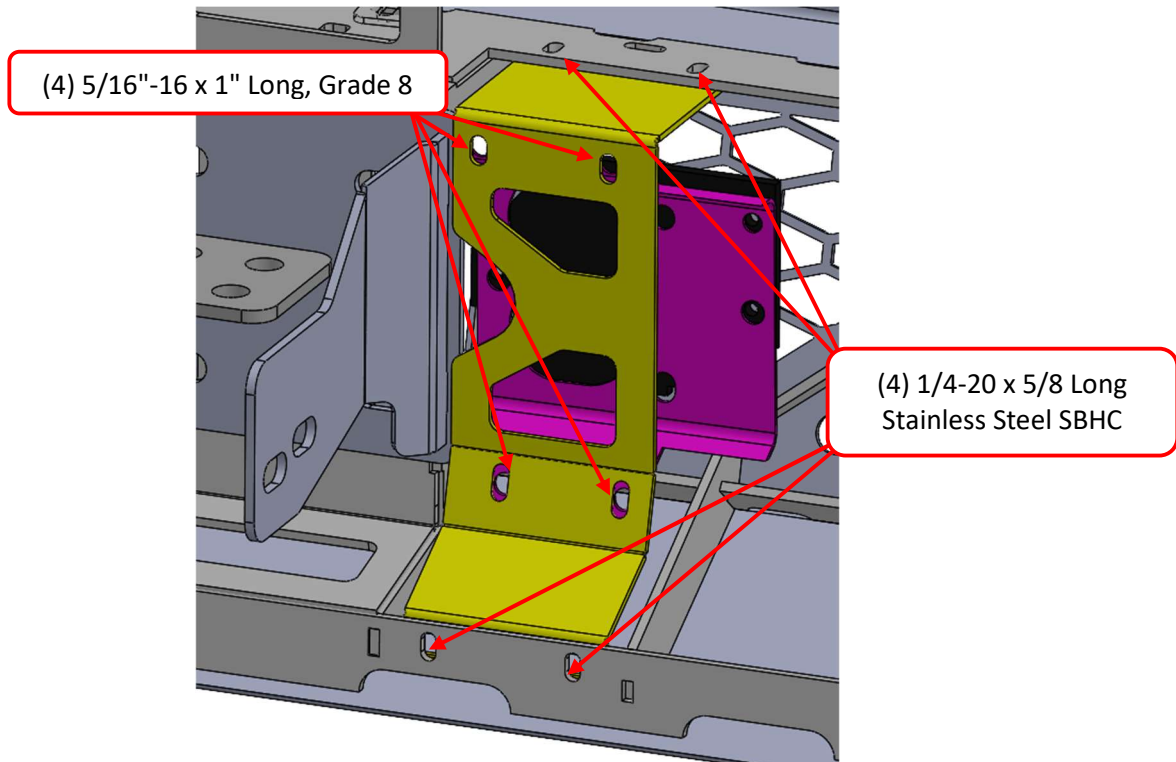
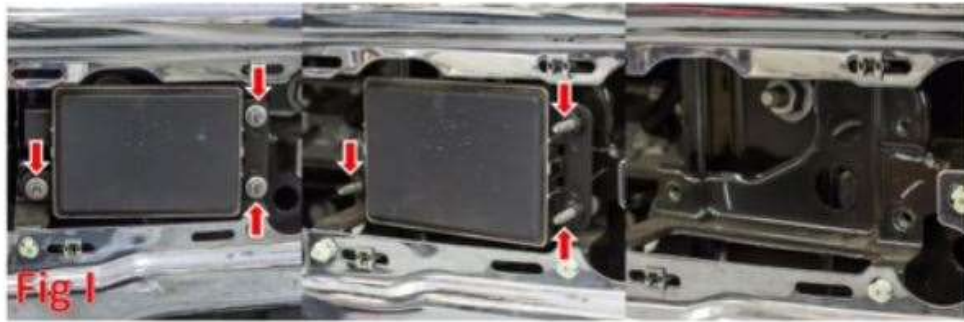


# ADAPTIVE CRUISE CONTROL INSTALL

Some vehicles are equipped with an Adaptive Cruise Control unit (ACC). The following steps will show you how to install the unit into your bumper.

NOTE: If the battery is not disconnected prior to removal and installation, it is possible that after installation, the ACC module will have to be recalibrated.

1. Install the ACC module and bracket to the Bodyguard ACC bracket using (4) **(5/16"-16 x 1" Long, Grade 8 HB)**.
2. Now, install the Bodyguard ACC bracket to the bumper using (4) **(1/4-20 x 5/8 Long, Stainless Steel SBHC)**.



3. Once you install the bumper back on the truck, connect the ACC unit back to the factory wiring harness.  
**Note: It may take up to 50 miles for the ACC unit to calibrate itself.**

## CAMERA BRACKET INSTALL (OPTIONAL)

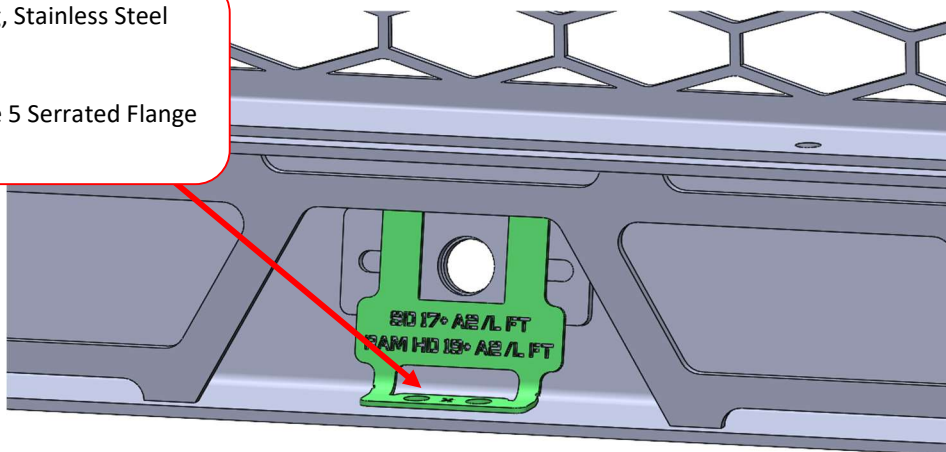
1. Place Camera into square spacer that is welded to the bumper. Then install the blue bracket with **(2) (1/4-20 x 5/8 Long, Stainless Steel SBHCS)** behind the camera. This bracket will press the camera against the spacer securing the camera to the grille guard.



(2) - 1/4-20 x 3/4 Long, Stainless Steel SBHCS



(2) - 1/4-20 Hex Grade 5 Serrated Flange Nut, Stainless Steel

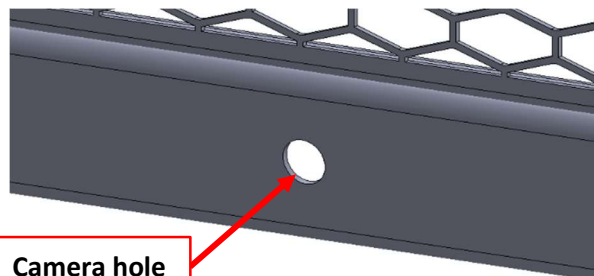


## CAMERA PLUG INSTALL

1. If your vehicle does not come equipped with a front camera, install the provided plug into the camera hole.



Camera plug

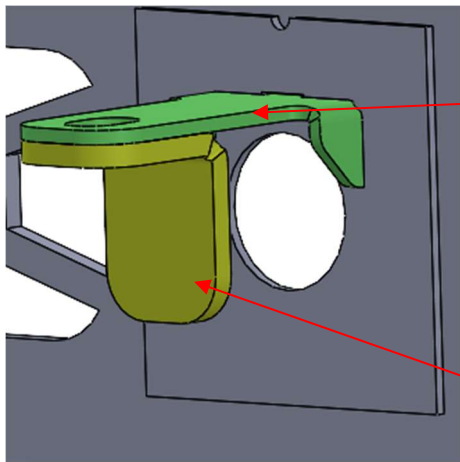


Camera hole



## PARKING SENSOR INSTALL (OPTIONAL)

1. Place the factory parking sensor into the Parking Sensor hole and use the Retainer Bracket to hold it in place. Once you have that secure, bolt the Retainer Bracket to the Sensor Bracket using the supplied hardware. Repeat this step for all other parking sensors.



Sensor Bracket



(1) - 1/4-20 x 5/8 Long, Stainless Steel  
SBHCS



(1) - 1/4-20 Hex Grade 5 Serrated Flange  
Nut, Stainless Steel

Sensor Retainer Bracket

## SENSOR PLUG INSTALL

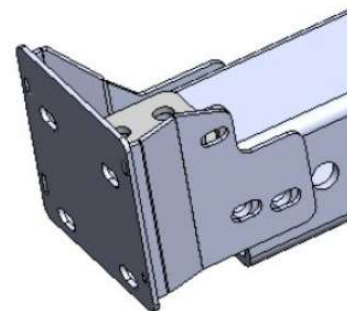
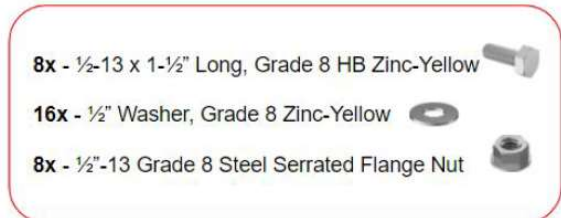
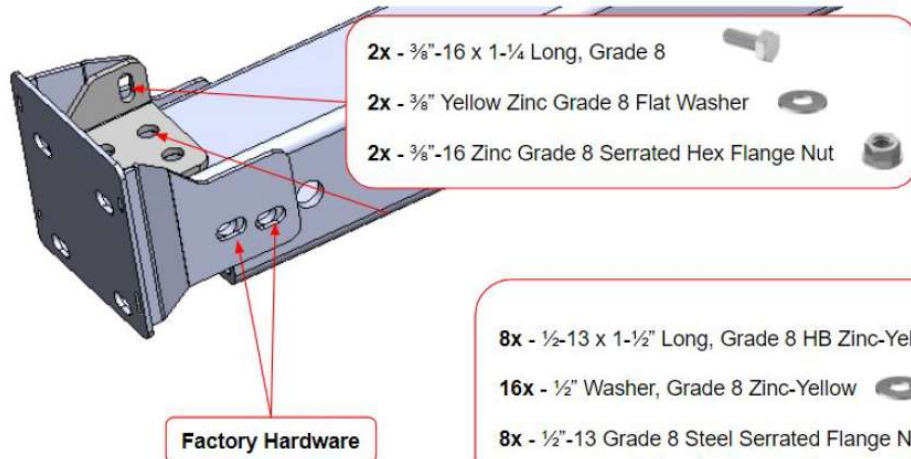
1. If your vehicle is not equipped with parking sensors, install the provided plugs and install them into the parking sensor holes. Install fog light pods onto the fog light buckets, then install the fog light buckets onto the bumper along with the sensor plate for the fog lights. Be sure to plug in the sensor to the harness before installing.



Parking sensor plug

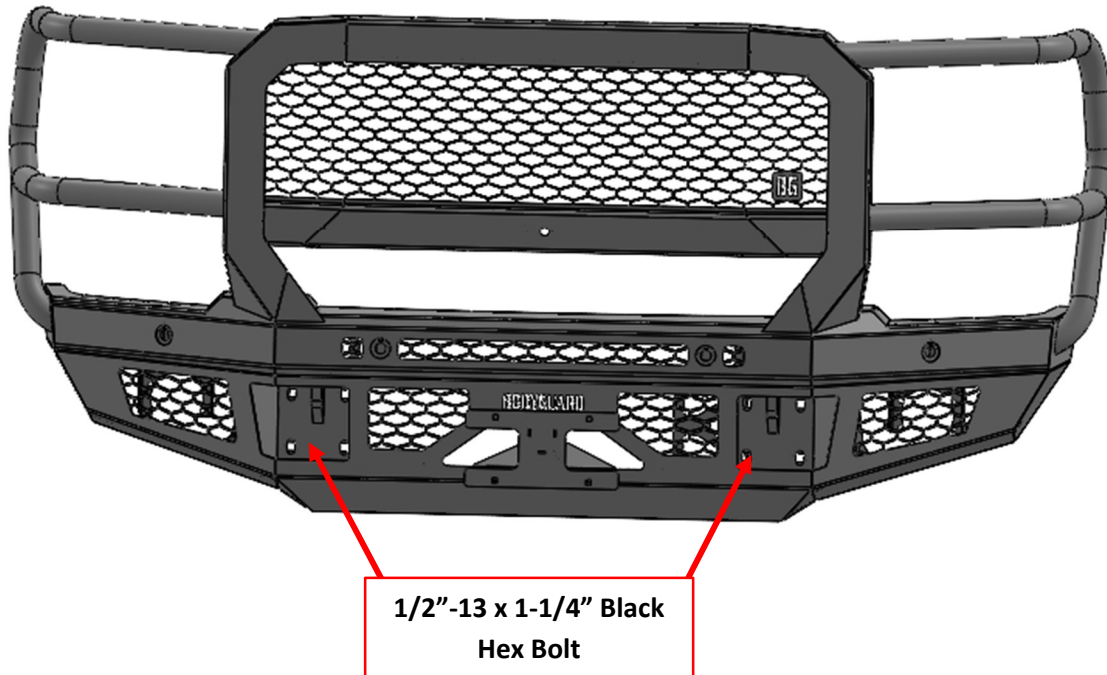
# BUMPER MOUNT INSTALL

1. Attach the supplied truck mounts loosely with the hardware listed below.





# BUMPER INSTALLATION



1. Attach the bumper with the 1/2" black hardware, leaving enough space to adjust the bumper as needed into position. Using a tape measure, adjust the bumper vertically and horizontally to the desired body gaps. Once the bumper is lined up, tighten all hardware for the bumper and the mounts. Using jack stands or an additional person to help support the bumper is recommended.
2. Now that the bumper is mounted and installed, plug in the factory fog lights, front camera, ACC module, and wire in the light bar. Route and secure wiring as desired.

NOTE: The camera harness will go under the bumper top plate up through a cut hole in the uprights to the camera mount in the grill.

## SAFETY

### THE SAFETY OF YOU AND OTHERS IS VERY IMPORTANT TO US!

To minimize this risk and make an informed decision about safety, it is important that you carefully read and follow the installation instructions we have provided.

We urge you to use your own good judgment and allow plenty of time for installation.

## HAZARD CHECKLIST

1. Always wear personal protective equipment (PPE) such as: protective eye wear, gloves, close toed shoes, etc.
2. We recommend that you use a certified mechanic or shop for professional installation.
3. Always set emergency brakes on vehicle and use tire blocks to ensure vehicle stabilization.
4. Use caution when lifting, we recommend the use of equipment to help lift bumpers into place.
5. Use caution when using power tools such as air ratchet, etc.
6. Take caution when installing wiring.
7. Perform regular inspections of hardware, bolts, brackets, etc.
8. Rigid light brackets are specifically designed to fit Rigid lights, we do not guarantee off brand fitment.
9. Our winch mount is designed for Warn and Superwinch products. We do not guarantee off-brand fitment.

## USE & RISK

Bodyguard Products LLC is not responsible for damage to our products, or other subsequent damage that might occur because of misuse or improper installation. While we do manufacture products that appear stronger than factory parts, our products should not be viewed or relied upon as life-saving devices in the event of a collision or rollover. We make no claims relating to airbag compatibility, crashworthiness, or sturdiness. It is the customer's responsibility to check with the vehicle manufacturer or auto dealer regarding airbag compatibility and automobile manufacturer's warranty before installing our products.

## FINISHING UP

- Install shackles.
- Confirm that all hardware is tightened, and everything is secure.
- Secure wiring harnesses for lights and sensors.
- Test all lighting and wiring before using vehicle (fog lights, sensors, etc.).

## MAINTENANCE

- Periodically check that all hardware is tightened and that all wiring and connections are secure.
- Periodically check that all sensor plugs are secure.
- Routinely wash bumper to maintain the powder coat finish.

## FEEDBACK

We'd love to hear from you! Please send your pictures, testimonials, comments, or suggestions to us by email at [info@bodyguardbumpers.com](mailto:info@bodyguardbumpers.com). We frequently use customer pictures for brochures and marketing materials, and we always welcome customer feedback to ensure quality improvements within our company. Thanks for your purchase; we appreciate your business very much!

**Where STRENGTH Meets *Style!*™**



@BodyguardBumpers