

# INSTALLATION GUIDE



## SAFETY

**THE SAFETY OF YOU AND OTHERS IS VERY IMPORTANT TO US!**

In order to minimize this risk and make an informed decision about safety, it is important that you carefully read and follow the installation instructions we have provided.

We urge you to use your own good judgment and allow plenty of time for install.

## HAZARD CHECKLIST

- Always wear personal protective equipment (PPE) such as: protective eye wear, gloves, close toed shoes, etc.
- We recommend that you use a certified mechanic or shop for professional installation.
- Always set emergency brakes on vehicle and use tire blocks to ensure vehicle stabilization.
- Use caution when lifting, we recommend the use of equipment to help lift bumpers into place.
- Use caution when using power tools such as air ratchet, etc.
- Take caution when installing wiring.
- Perform regular inspections of hardware, bolts, brackets, etc.
- Rigid light brackets are specifically designed to fit Rigid lights, we do not guarantee off brand fitment.
- Our winch mount is designed for Warn and Superwinch products. We do not guarantee off brand fitment.

## USE & RISK

Bodyguard Products LLC is not responsible for damage to our products, or other subsequent damage that might occur, as a result of misuse or improper installation. While we do manufacture products that appear stronger than factory parts, our products should not be viewed or relied upon as life-saving devices in the event of a collision or rollover. We make no claims relating to airbag compatibility, crashworthiness, or sturdiness. It is the customer's responsibility to check with the vehicle manufacturer or auto dealer regarding airbag compatibility and automobile manufacturer's warranty before installing our products.

# PREPARATION

- Ensure personal safety by checking for hazards and identifying risks.
- Check for correct hardware.
- Check for tools needed.
- Use either foam or tape on fenders to prevent scratches to the truck when installing your bumper.
- Please allow approximately 3-4 hours for installation.

# HARDWARE

UNIVERSAL		
A2L-HK-FCS	<b>A2L Front Center Section:</b>	<b>Qty</b>
	1/4-20 x 5/8 Long, Stainless Steel SBHCS	20
	1/4-20 (.093-.126: Panel Range) Zinc Electroplate Spring Steel Cage Nut	20
A2L-HK-FFL	<b>A2L Front Fog Light</b>	<b>Qty</b>
	1/4-20 x 5/8 Long, Stainless Steel SBHCS	15
	1/4-20 (.093-.126: Panel Range) Zinc Electroplate Spring Steel Cage Nut	15
A2L-HK-FLP	<b>A2L Front License Plate</b>	<b>Qty</b>
	Plastic License Plate Nuts	4
	1/4-20 x 3/4 Long, Stainless Steel SBHCS	2
	1/4-20 Hex Grade 5 Serrated Flange Nut, Stainless Steel	4
	#14 x 5/8" Zinc License Plate Screw	4
A2L-HK-FLB	<b>A2L Front Light Bar Mount</b>	<b>Qty</b>
	1/4-20 x 5/8 Long, Stainless Steel SBHCS	6
	1/4-20 Hex Grade 5 Serrated Flange Nut, Stainless Steel	6
A2L-HK-GFH20	<b>A2L Front Mount Kit 2020+ GM HD</b>	<b>Qty</b>
	1/2"-13 x 4" Yellow Zinc Grade 8 Hex Bolt	4
	1/2" Washer, Grade 8 Zinc-Yellow	24
	1/2"-13 Grade 8 Steel Serrated Flange Nut Zinc	16
	1/4-20 x 3/4 Long, Stainless Steel SBHCS	4
	1/4-20 Hex Grade 5 Serrated Flange Nut, Stainless Steel	4
	Sensor Bezel (Part #6MH 3RXF AB) (Passenger Side Fog light Ring Sensor)	1
	Sensor Bezel (Part #6MH 2RXF AB) (Driver Side Fog light Ring Sensor)	1
	Standard 1/4 hardware.	

**I. GRILLE AND CAMERA REMOVAL**



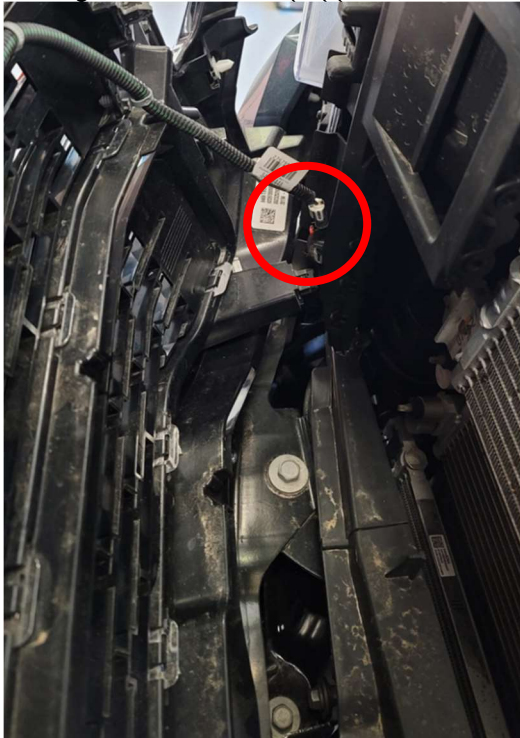
1. Remove 9 plastic clips holding plastic cover above grille.



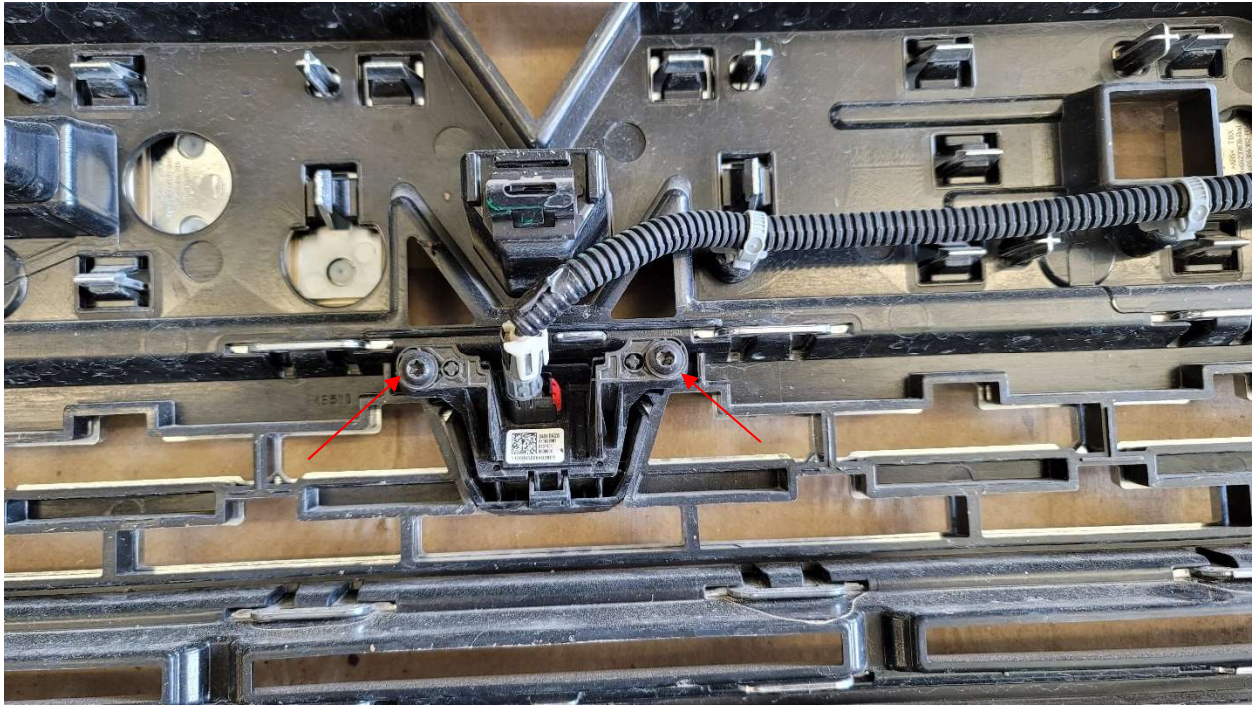
2. Remove torx screws from hood latch, and remove hood latch. Then remove the plastic cover above the grille.



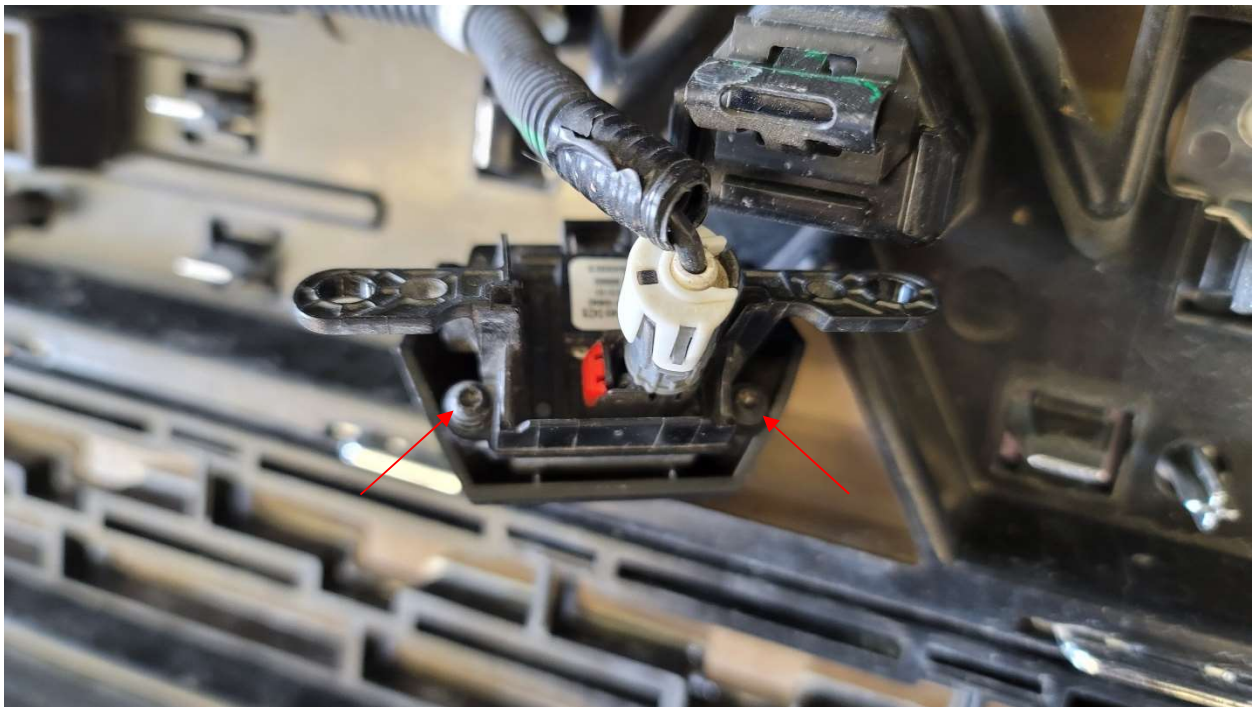
3. Next un screw the screws holding the grille to the truck.
4. To remove the grille, you must pull gently around the edges to pop it out. The painted covers under the headlights must also be popped loose to remove the grille.



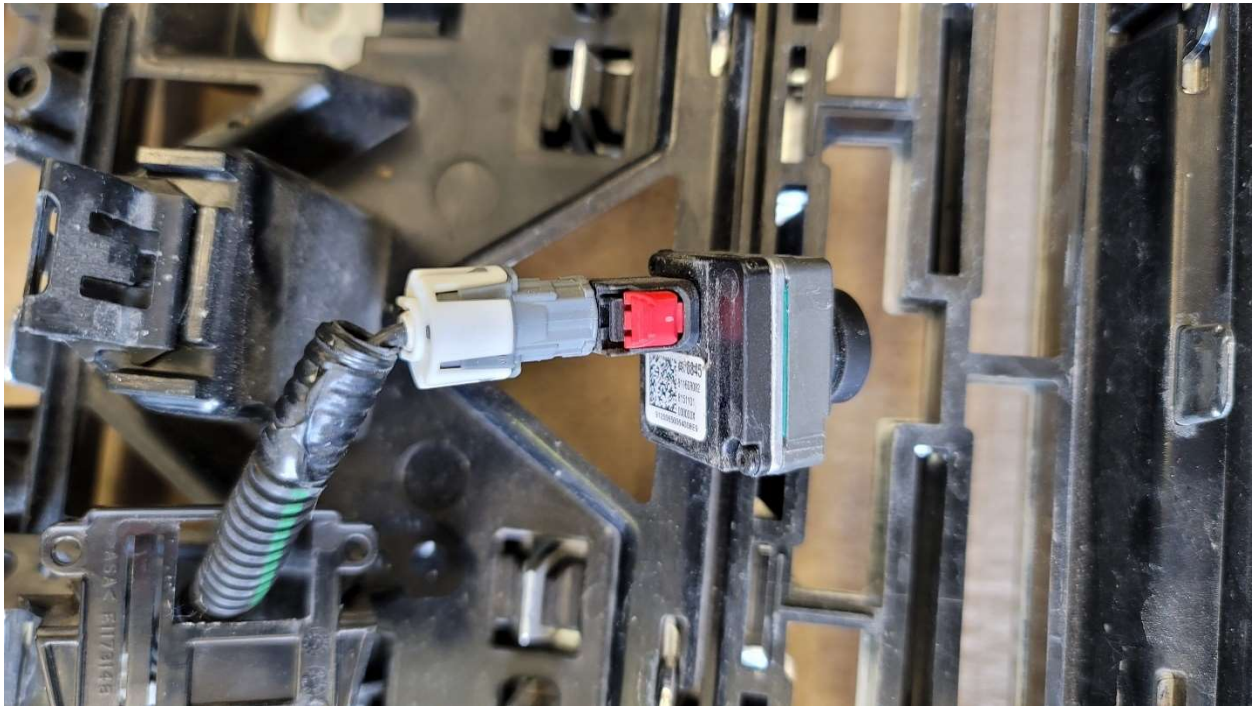
3. Once the grille is loose disconnect camera from plug located at the bottom passenger side of the grille.



4. Remove camera from grille by removing the two torx screws shown above



5. Remove camera from factory camera bracket by removing the two torx screws shown above



6. Disconnect camera from wiring harness. Place the camera in a safe place to be installed in the bumper in a later step.

## II. FACTORY BUMPER REMOVAL



*Note: We recommend having someone help hold the bumper from falling while uninstalling*

1. Remove the two bolts circled above. This will loosen the bumper from the factory truck mounts.



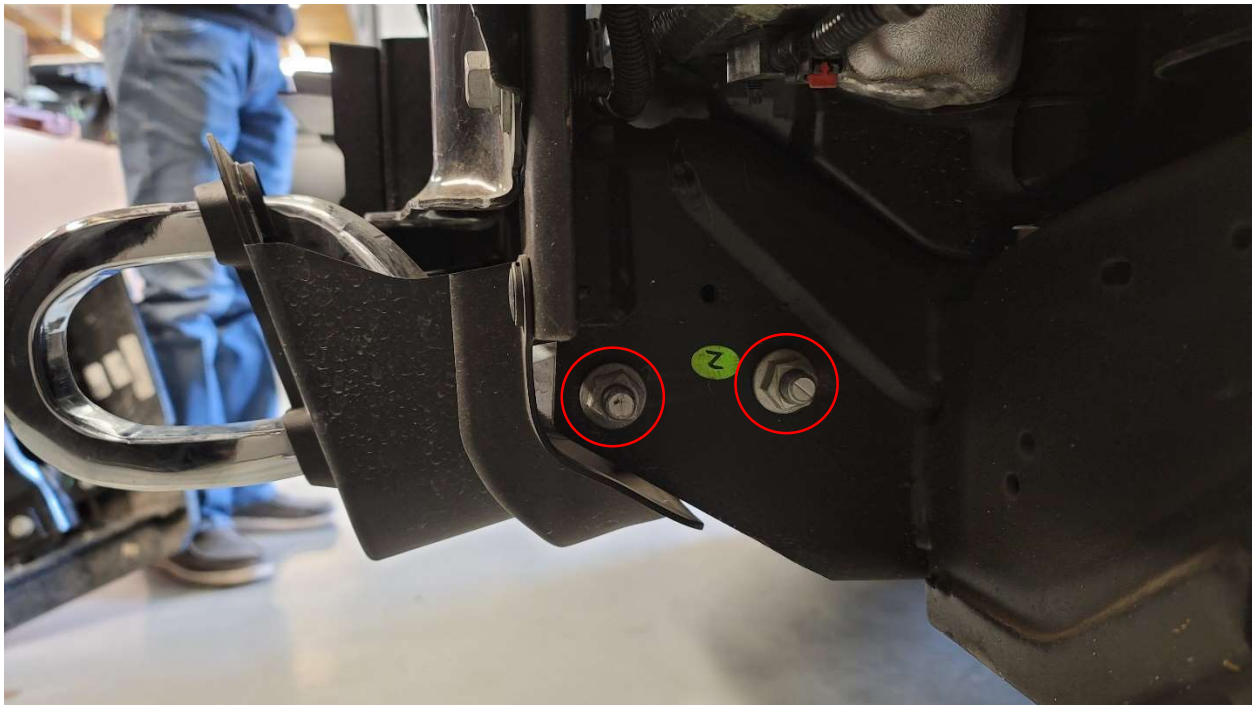
2. Remove the two bolts circled above. This will fully unbolt the bumper from the truck.



3. Once the bumper is loose this will help locate the fog light and sensor wiring harness plug. This is located on the passenger side. You may have to tilt or partially remove the factory bumper to better access this plug.



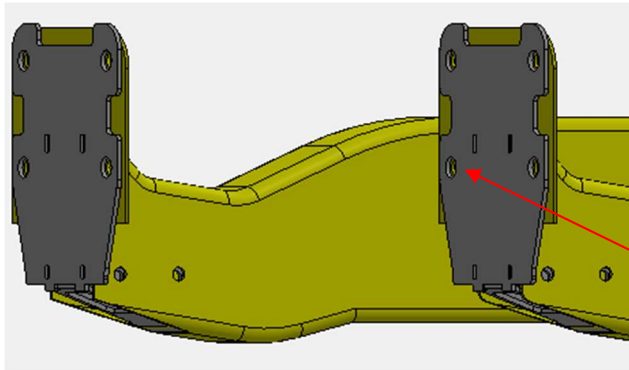
4. Remove the screws circled in blue. This will remove the radiator intake shroud. If your truck has shutters here then soave this part for a later step.
5. Next remove the bolts circled in red. Save these bolts for the installation of your Bodyguard bumper.



5. Finally remove the bolts holding the factory shackles circled in red. Save these bolts for the installation of your Bodyguard bumper.

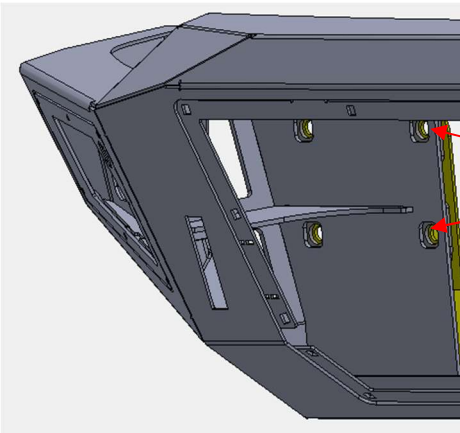
## VI. Bumper Installation

1. If your truck was equipped with factory tow hooks use the bolts removed to install the mounts. If not use the supplied 1/2" x 4" bolts supplied.



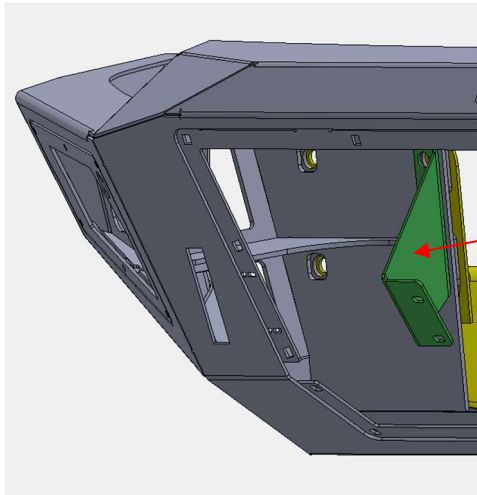
Use Factory Bolts or 1/2" x 4"

2. Put the shutter systems through the center of the bumper, then bumper align the outside bolts and attach the bumper using factory bolts.



Factory Bolts

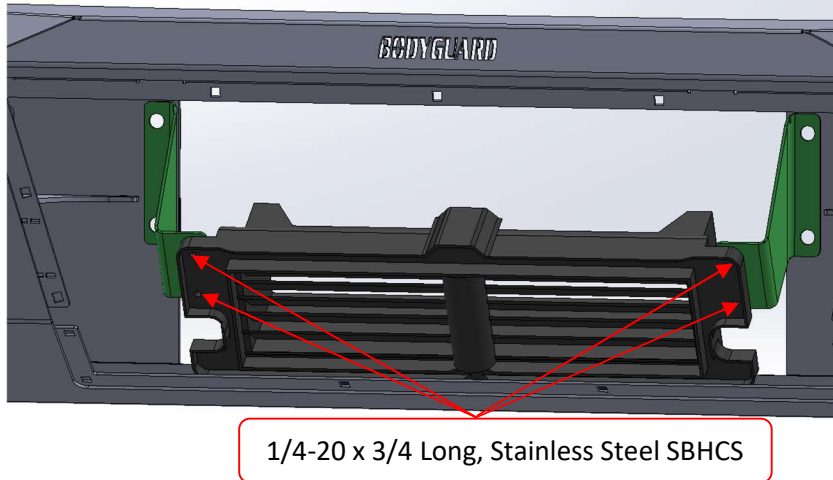
3. Install the shutter system mount on with remaining factory bolts. Then adjust bumper fitment and tighten all mount bolts.



Shutter Bracket

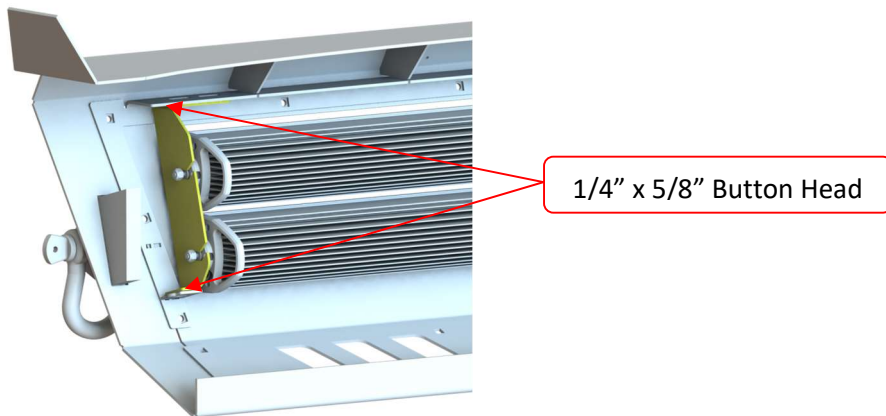
## VII. Active Aero Shutters

1. The Shutter System has hook on the top that allows you to hang it and then mount using the supplied 1/4" x 3/4" bolts.



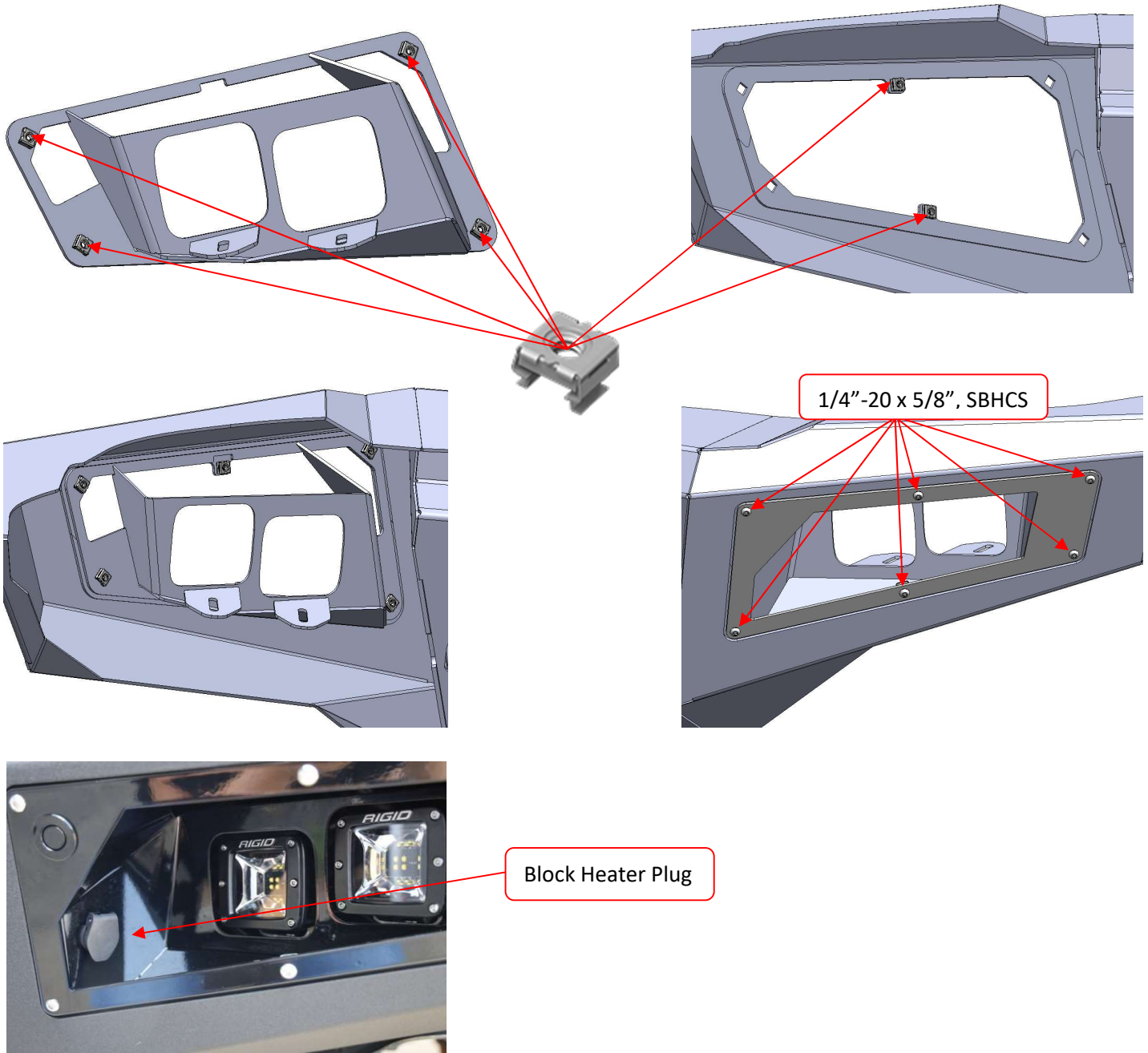
## VIII. Center Install

1. Attach the Z brackets to the bumper with supplied 1/4" x 5/8" bolts.
2. Attach Light bar with hardware supplied with light bar.
3. Install the supplied 1/4" Cage nuts around the skid mount.
4. Attach the Center Skid with 1/4" x 5/8" bolts.



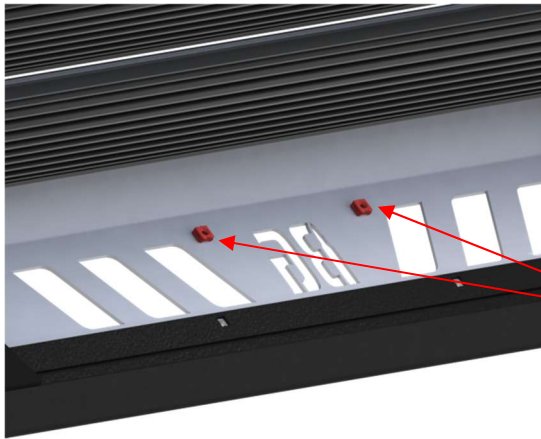
## IX. Fog Light Install

1. Install the 4 - 1/4" cage nuts into the Fog Light Bucket.
2. Install 2 - 1/4" cage nuts into the center of the Fog Light Cut out in the bumper.
3. If you have the block heater it mounts in the Driver side fog bucket, if you do not install supplied plug.
3. Put the Fog Light bucket inside the bumper and the trim ring on the outside and bolt together using 1/4" x 5/8" bolts.



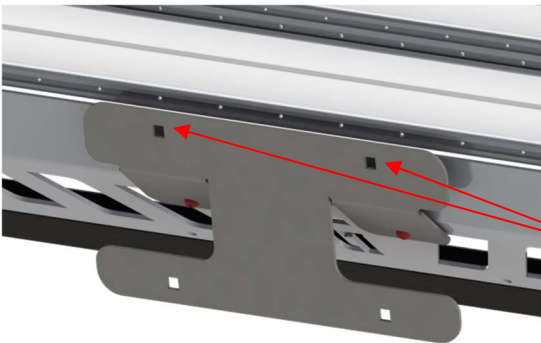
## **X. License Plate Install**

1. Install two 1/4"-20 Clip Nuts into square holes on each side of BG logo



1/4"-20, Cage Nut

2. Then install license plate bracket to skid plate using two 1/4"-20 x 5/8" button head screws



1/4"-20 x 5/8", SBHCS

## FINISHING UP

- Install shackles.
- Confirm that all hardware is tightened and everything is secure.
- Secure wiring harnesses for lights and sensors.
- Reconnect the battery.
- Test all lighting and wiring before using vehicle (fog lights, sensors, etc.).

## MAINTENANCE

- Periodically check that all hardware is tightened and that all wiring and connections are secure.
- Periodically check that all sensor plugs are secure.
- Routinely wash bumper to maintain the powder coat finish.

## FEEDBACK

We'd love to hear from you!

Please send your pictures, testimonials, comments, or suggestions to us by email at [info@bodyguardbumpers.com](mailto:info@bodyguardbumpers.com). We frequently use customer pictures for brochures and marketing materials, and we always welcome customer feedback to ensure quality improvements within our company. Thanks for your purchase; we appreciate your business very much!

**Where STRENGTH Meets *Style!*™**



@BodyguardBumpers