

# Installation Instructions

**T2 Series – Front Replacement  
2020 - 2023 GMC 2500/3500 HD**



## Where **STRENGTH** Meets *Style!*™

### I. SAFETY

#### THE SAFETY OF YOU AND OTHERS IS VERY IMPORTANT TO US!

In order to minimize this risk and make an informed decision about safety, it is important that you carefully read and follow the installation instructions we have provided.

We urge you to use your own good judgment and allow plenty of time for install.

### II. HAZARD CHECKLIST

- Always wear personal protective equipment (PPE) such as: protective eye wear, gloves, close toed shoes, etc.
- We recommend that you use a certified mechanic or shop for professional installation.
- Always set emergency brakes on vehicle and use tire blocks to ensure vehicle stabilization.
- Use caution when lifting, we recommend the use of equipment to help lift bumpers into place.
- Use caution when using power tools such as air ratchet, etc.
- Take caution when installing wiring.
- Perform regular inspections of hardware, bolts, brackets, etc.
- Rigid light brackets are specifically designed to fit Rigid lights, we do not guarantee off brand fitment.
- Our winch mount is designed for Warn and Superwinch products. We do not guarantee off brand fitment.

### III. USE & RISK

Bodyguard Products LLC is not responsible for damage to our products, or other subsequent damage that might occur, as a result of misuse or improper installation. While we do manufacture products that appear stronger than factory parts, our products should not be viewed or relied upon as life-saving devices in the event of a collision or rollover. We make no claims relating to airbag compatibility, crashworthiness, or sturdiness. It is the customer's responsibility to check with the vehicle manufacturer or auto dealer regarding airbag compatibility and automobile manufacturer's warranty before installing our products.

# Installation Instructions

## T2 Series – Front Replacement 2020 - 2023 GMC 2500/3500 HD

### IV. PREPARATION

- Ensure personal safety by checking for hazards and identifying risks.
- Check for correct hardware.
- Check for tools needed.
- Use either foam or tape on fenders to prevent scratches to the truck when installing your bumper.
- Please allow approximately 3-4 hours for installation.

### V. GRILLE AND CAMERA REMOVAL



1. Remove 9 plastic clips holding plastic cover above grille.



2. Remove torx screws from hood latch, and remove hood latch. Then remove the plastic cover above the grille.

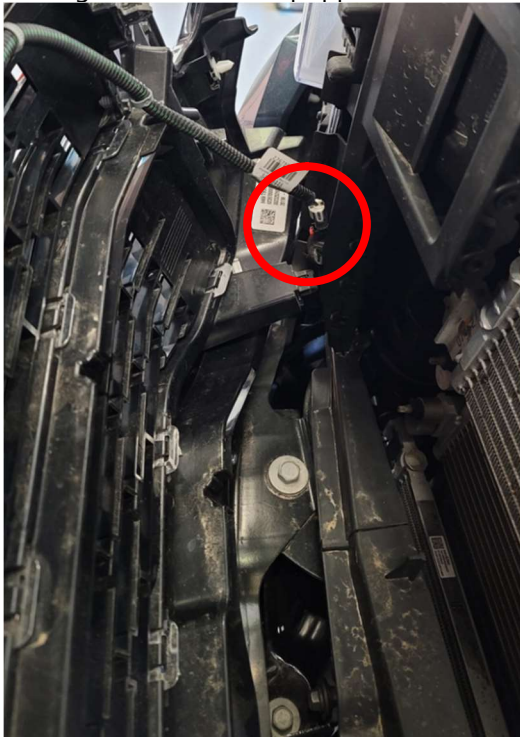


# Installation Instructions

**T2 Series – Front Replacement  
2020 - 2023 GMC 2500/3500 HD**



3. Next un screw the screws holding the grille to the truck.
4. To remove the grille, you must pull gently around the edges to pop it out. The painted covers under the headlights must also be popped loose to remove the grille.

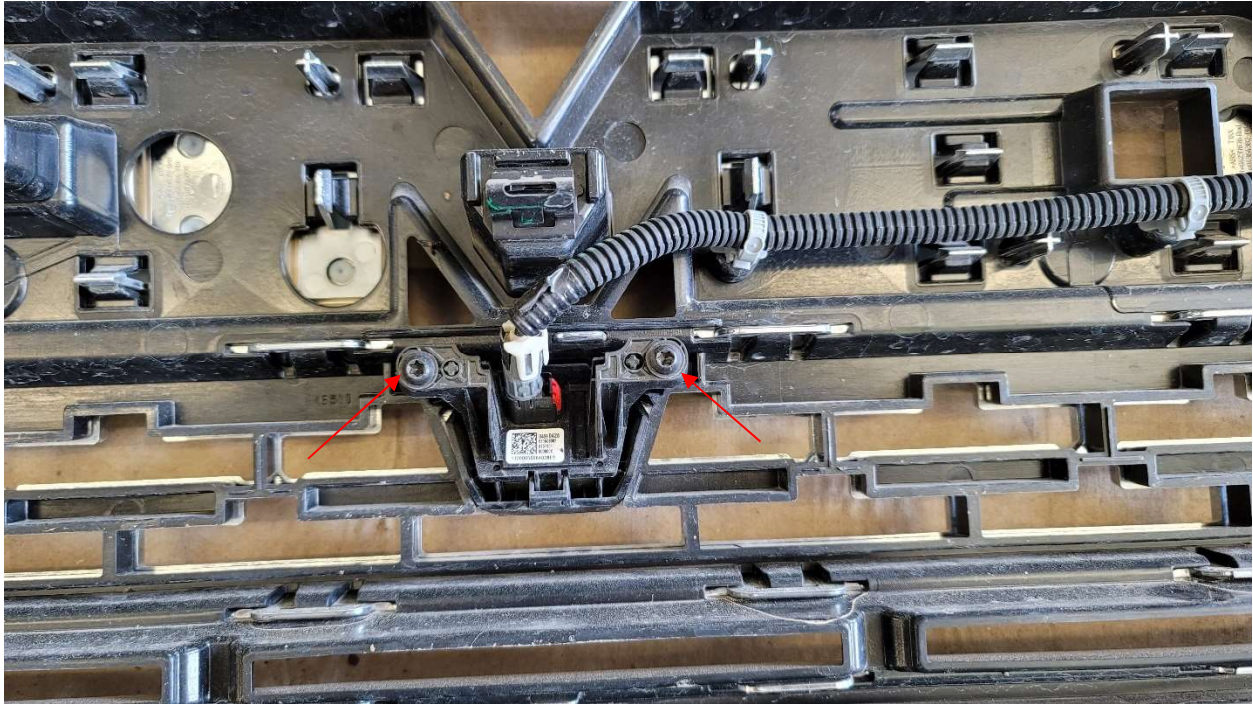


3. Once the grille is loose disconnect camera from plug located at the bottom passenger side of the grille.

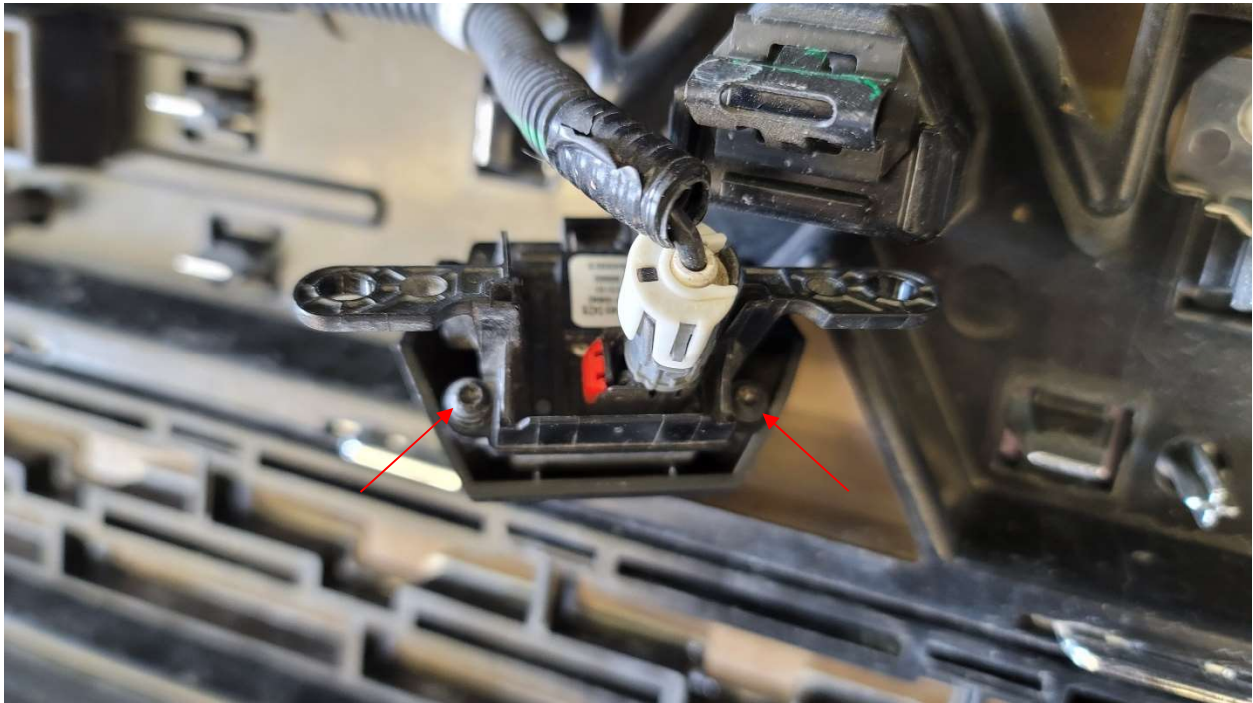


# Installation Instructions

**T2 Series – Front Replacement  
2020 - 2023 GMC 2500/3500 HD**



4. Remove camera from grille by removing the two torx screws shown above

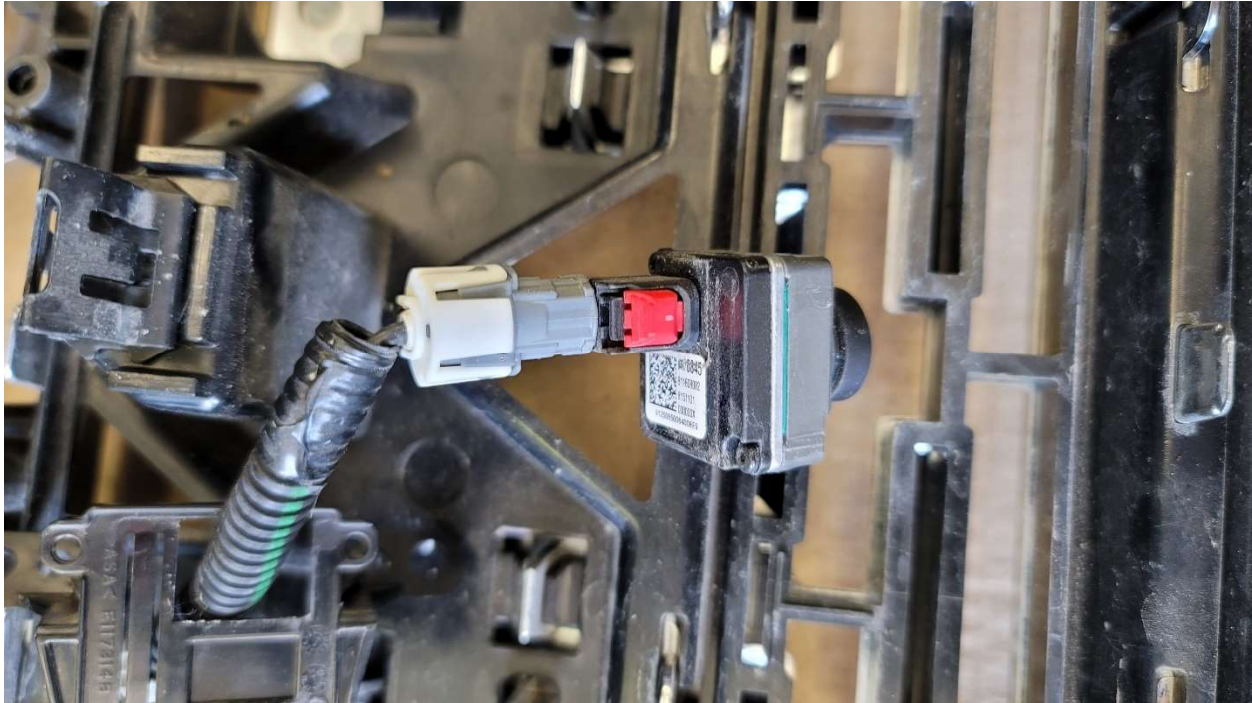


5. Remove camera from factory camera bracket by removing the two torx screws shown above



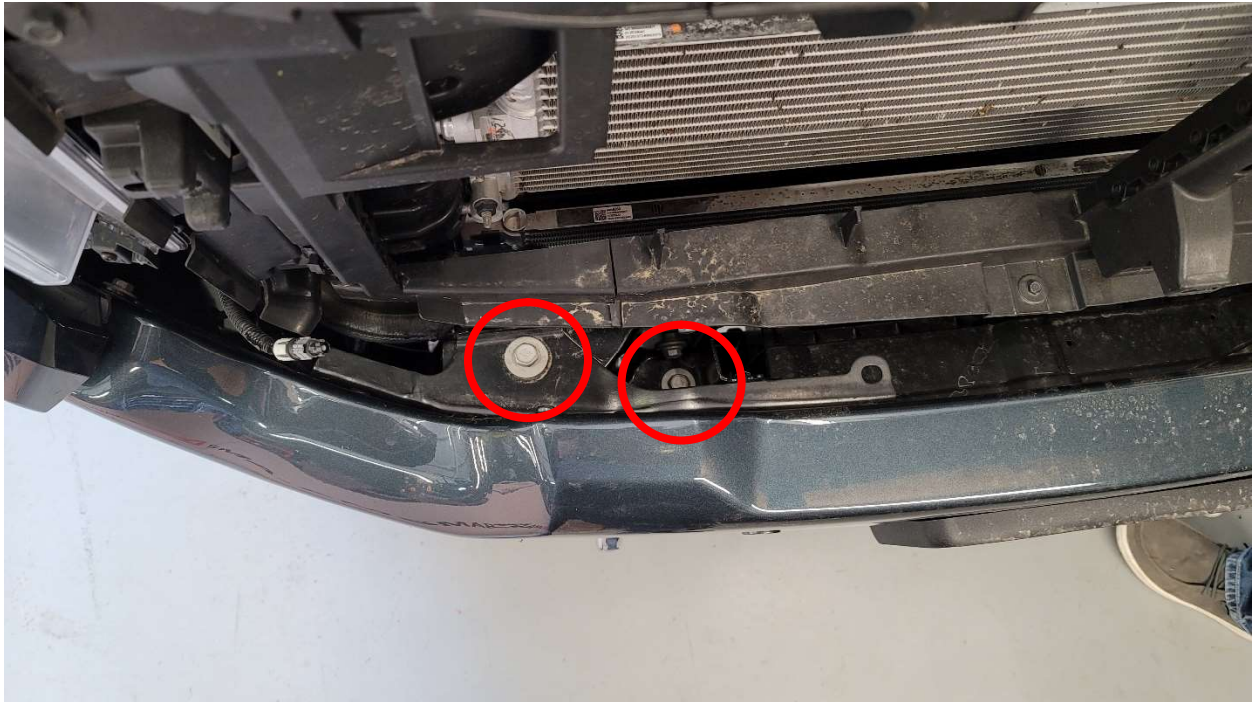
# Installation Instructions

**T2 Series – Front Replacement  
2020 - 2023 GMC 2500/3500 HD**



6. Disconnect camera from wiring harness. Place the camera in a safe place to be installed in the bumper in a later step.

- **FACTORY BUMPER REMOVAL**



*Note: We recommend having someone help hold the bumper from falling while uninstalling*

1. Remove the two bolts circled above. This will loosen the bumper from the factory truck mounts.

# Installation Instructions

**T2 Series – Front Replacement  
2020 - 2023 GMC 2500/3500 HD**



2. Remove the two bolts circled above. This will fully unbolt the bumper from the truck.



3. Once the bumper is loose this will help locate the fog light and sensor wiring harness plug. This is located on the passenger side. You may have to tilt or partially remove the factory bumper to better access this plug.

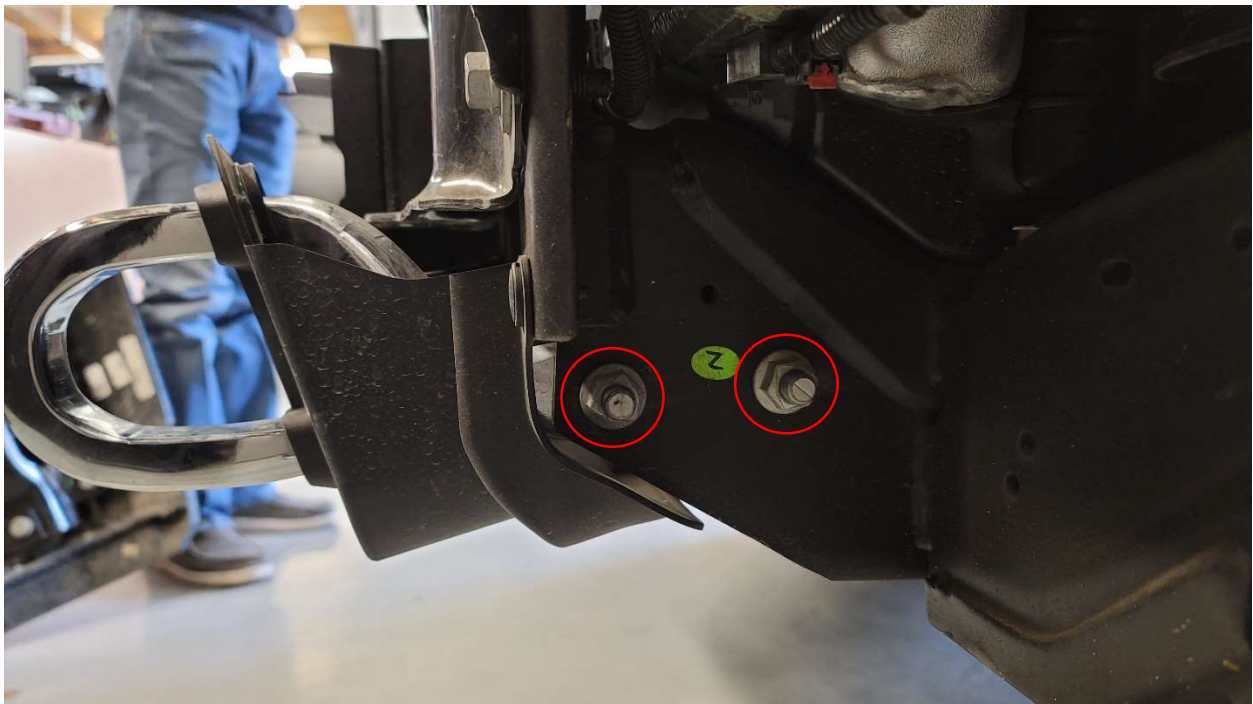


# Installation Instructions

**T2 Series – Front Replacement  
2020 - 2023 GMC 2500/3500 HD**



4. Remove the screws circled in blue. This will remove the radiator intake shroud. If your truck has shutters here then save this part for a later step.
5. Next remove the bolts circled in red. Save these bolts for the installation of your Bodyguard bumper.



5. Finally remove the bolts holding the factory shackles circled in red. Save these bolts for the installation of your Bodyguard bumper.
6. If your truck has a front camera route the camera cable down and connect the provided camera extension cable.
7. Re install the factory grille.
8. Your Bodyguard bumper is now ready to install.

# Installation Instructions

## T2 Series – Front Replacement 2020 - 2023 GMC 2500/3500 HD

### VI. Hardware Kit

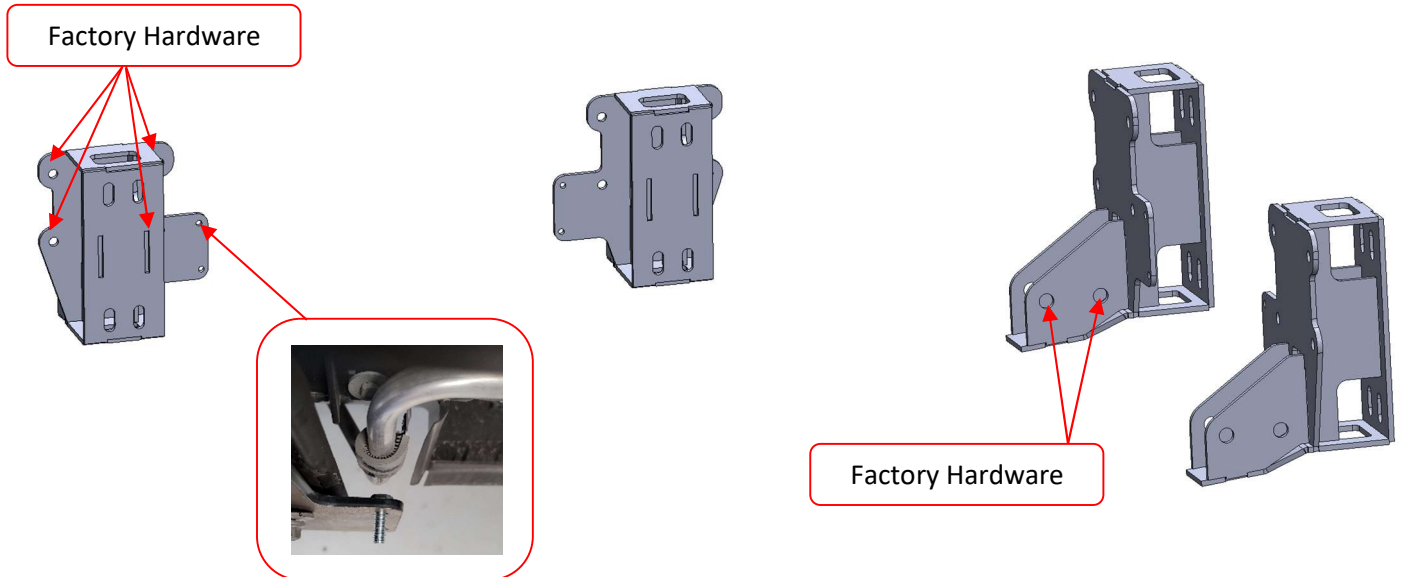
<b>T2-HK-CFH20+ (A)</b>	<b>T2 Front Mount Kit 20+ Chevy HD</b>	<b>Qty</b>
	1/2"-13 x 1-1/2" Long, Grade 8 HB, Zinc Double Bolt (1.75")	4
	1/2" Yellow Zinc Grade 8 Flat Washer	16
	1/2"-13 Zinc Grade 8 Serrated Hex Flange Nut	12
	1/2"-13 x 4" Yellow Zinc Grade 8 Hex Bolt	4
	Sensor Plugs (Heyco Part #9695)	6
	Camera Wiring Harness #89758	1
<b>T2-HK-FCS (A.01)</b>	<b>T2 Front Center Section</b>	<b>Qty</b>
	3/8"-16 x 1" Yellow Zinc Grade 8 Hex Bolt	10
	3/8"-16 x 2" Yellow Zinc Grade 8 Hex Bolt	6
	3/8"-16 Zinc Grade 8 Serrated Hex Flange Nut	6
	3/8"-16 Clip Nut	10
	3/8" Yellow Zinc Grade 8 Flat Washer	22
<b>T2-HK-FFL (A.01)</b>	<b>T2 Front Fog Light</b>	<b>Qty</b>
	1/4"-20 X 5/8" Stainless Steel SBHCS	22
	1/4"-20 Stainless Steel Serrated Hex Flange Nut	22
	5/16"-18 x 1" Zinc Grade 5 Hex Bolt	8
	5/16" Zinc Grade 5 Flat Washer	16
	5/16"-18 Zinc Grade 8 Serrated Hex Flange Nut	8
<b>T2-HK-FLP (A.01)</b>	<b>T2 Front License Plate</b>	<b>Qty</b>
	M8-1.25 x 25mm Long Grade 8.8 Hex Bolt	2
	M8 Zinc Flat Washer	4
	M8-1.25 Clip Nut	2
	M8x1.25 Zinc Grade 8.8 Serrated Hex Flange Nut	2
	Plastic License Plate Nuts	4
	#14 x 5/8" Zinc License Plate Screw	4



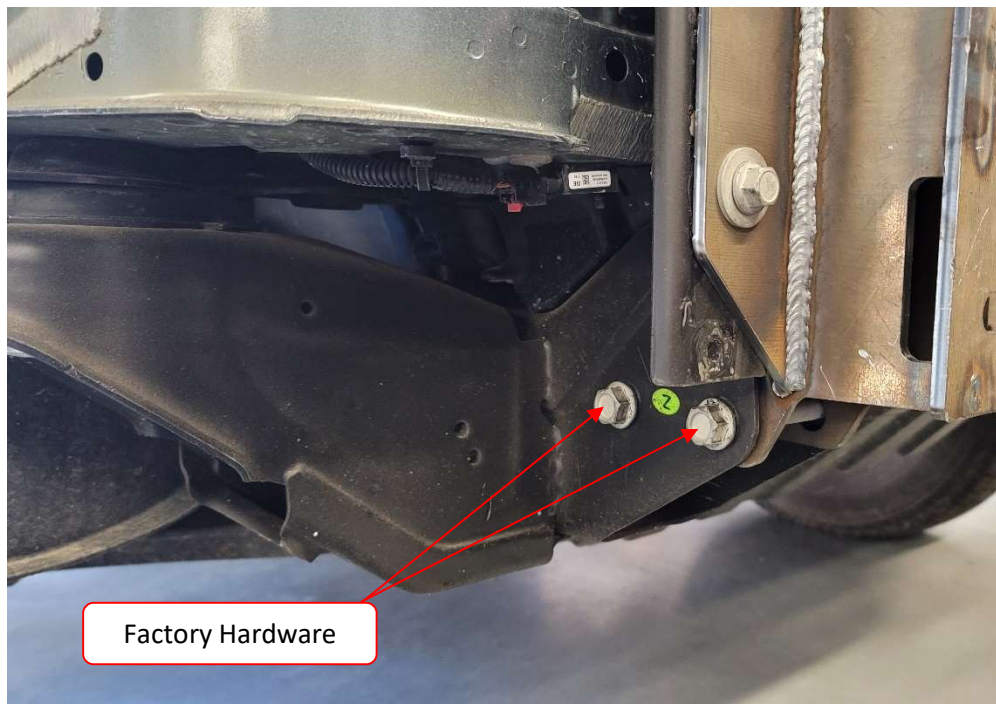
## Installation Instructions

**T2 Series – Front Replacement  
2020 - 2023 GMC 2500/3500 HD**

### VI. MOUNT INSTALLATION



1. Install the mounts to the truck. The mounts will reuse the factory hardware.
  2. Next install the adaptive shutters to the mounts. This will use 4x 5/16"-18 x 3/4" Long, Stainless Steel SBHCS.
- Note:** *Take note of the top left bolt used to secure the adaptive shutters. The bolt will have to face outwards to avoid the line that is located behind it.*

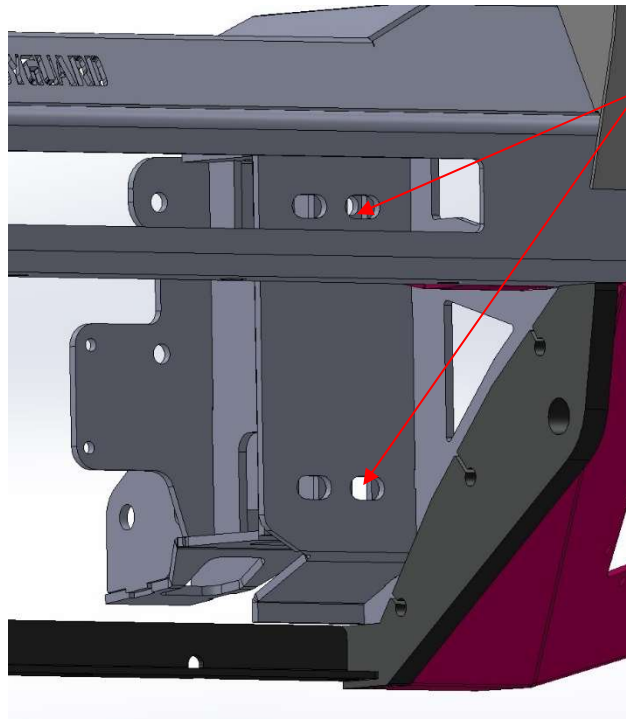


3. Use the factory bolts that were used to secure the factory tow hooks.

# Installation Instructions

**T2 Series – Front Replacement  
2020 - 2023 GMC 2500/3500 HD**

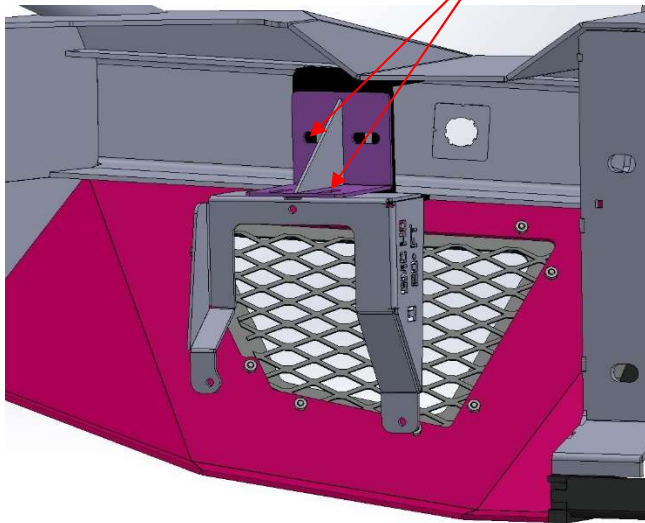
## VIII. Bumper Install



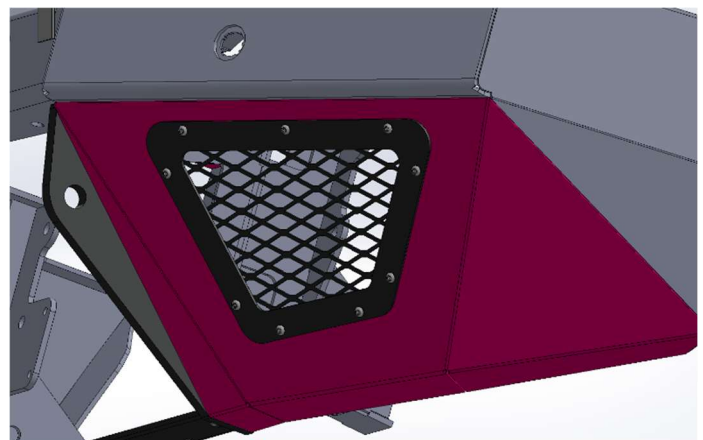
Use Double Bolts to  
secure Mounts to  
Bumper.

1. Secure the bumper to the mounts with **4x 1/2"-13 x 1-1/2" Long, Grade 8 HB, Zinc Double Bolt (1.75")**

## VII. FACTORY FOG LIGHT INSTALLATION



5/16"-18 x 1" Zinc Grade 5 Hex Bolts



1/4"-20 X 5/8" Stainless Steel SBHCS



## Installation Instructions

**T2 Series – Front Replacement  
2020 - 2023 GMC 2500/3500 HD**

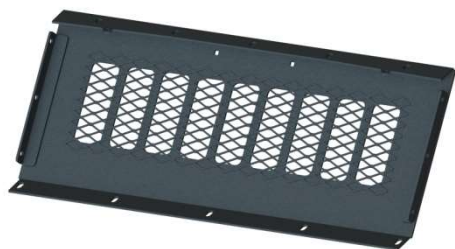
### IX. RIGID LIGHTING INSTALLATION (If applicable)

- Install Rigid lights into bolt on assembly. Using Rigid provided hardware. Then bolt on fog light assembly using items 1/4"-20 button head bolts. **Repeat this process for the other side.** See Rigid instructions for wiring.



### X. CENTER SECTION INSTALLATION

- Follow the instructions that apply to purchased center section.



SKID PLATE

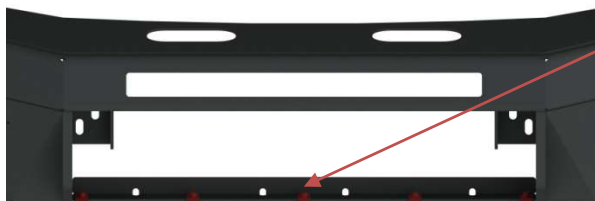


RECEIVER SKID

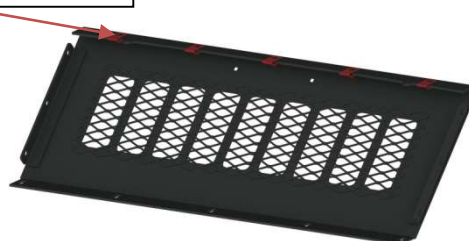


WINCH MOUNT

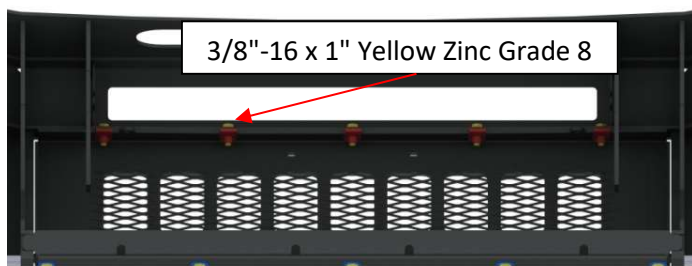
- 1) Place clip nuts onto bumper and center section as shown.



3/8"-16 Clip Nut



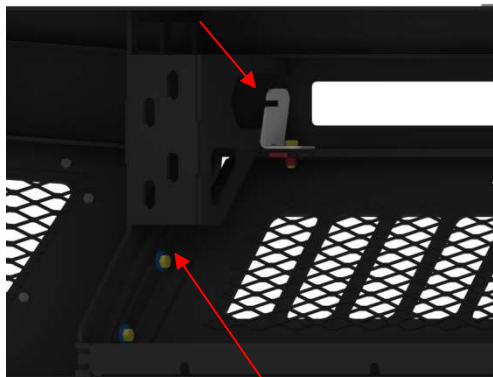
- 2) Bolt center section to bumper using 3/8" hardware.



3/8"-16 x 1" Yellow Zinc Grade 8

## Installation Instructions

### T2 Series – Front Replacement 2020 - 2023 GMC 2500/3500 HD



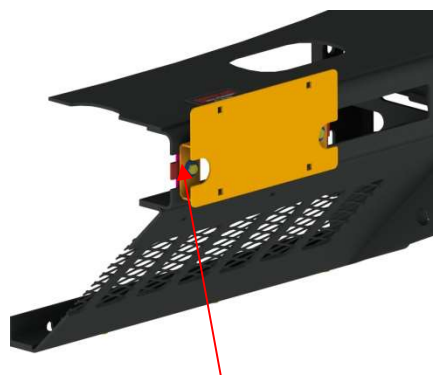
3/8"-16 x 2" Yellow Zinc Grade 8 Hex

- 3) Next bolt center section to 3/4" shackle mounts on both sides using 3/8" hardware.
- 4) Check that all bolts are secure on the skid plate assembly.
- 5) If installing the light bar tabs, the tabs will install with the center section hardware as shown. (Light bar tab replaces washer on top.)

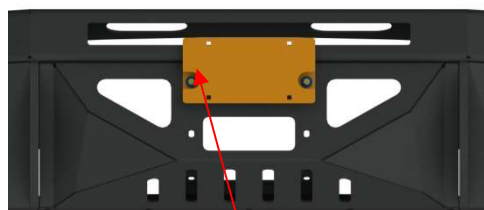
#### VIII. LICENSE PLATE INSTALLATION

##### Option 1: CHANNEL MOUNT

- 1) Clip nut onto license plate tab (shown in pink).
- 2) Place tab behind channel and bolt license plate assembly to tab using items M8 Hardware.
- 3) Insert item Plastic License Plate Nuts into license plate bracket and mount license plate using #14 x 5/8" Zinc License Plate Screw and a power drill.



M8-1.25 x 25mm Long Grade 8.8 Hex Bolt



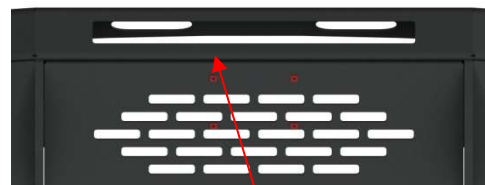
M8-1.25 x 25mm Long Grade 8.8 Hex

##### Option 2: WINCH MOUNT

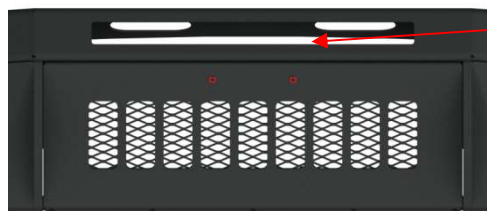
- 1) If installing a low winch mount, the license plate bracket can be mounted using M8 hardware in the holes cut above the fairlead mount.
- 2) Insert item Plastic License Plate Nuts into license plate bracket and mount license plate using #14 x 5/8" Zinc License Plate Screw and a power drill.

##### Option 3: SMOOTH PLATE SKID

- 1) Insert item Plastic License Plate Nuts into license plate bracket and mount license plate using #14 x 5/8" Zinc License Plate Screw and a power drill.



M8-1.25 x 25mm Long Grade 8.8 Hex



##### Option 4: TREAD PLATE SKID

- 1) Insert item Plastic License Plate Nuts into license plate bracket and mount license plate using #14 x 5/8" Zinc License Plate Screw and a power drill.

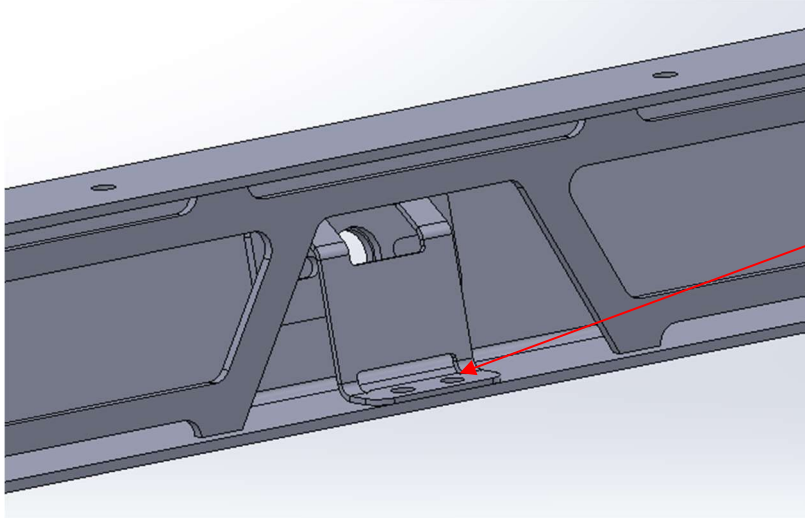


# Installation Instructions

## T2 Series – Front Replacement 2020 - 2023 GMC 2500/3500 HD

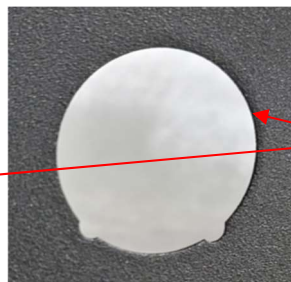
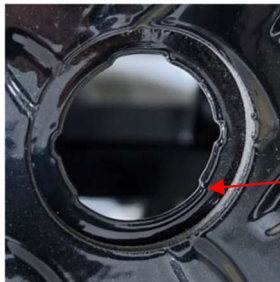
### IX. CAMERA INSTALL

1. Install the camera with the provided bracket. This bracket will hold the factory camera against the bumper.



1/4-20 x 3/4  
Long,  
Stainless  
Steel SBHCS

### X. SENSOR PLUG INSTALL



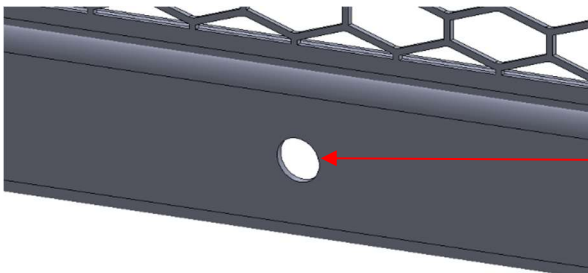
Sensor Plug

Note: The above sensor holes may not be the exact same cutout in your bumper. The images used as examples.

1. If your truck does not have sensors, use the provided sensor plugs.

### XI. CAMERA PLUG INSTALL

1. If your truck does not have the factory front camera, insert the provided plug into the camera cutout.



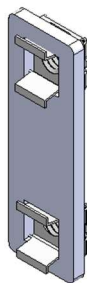
Sensor Plug

# Installation Instructions

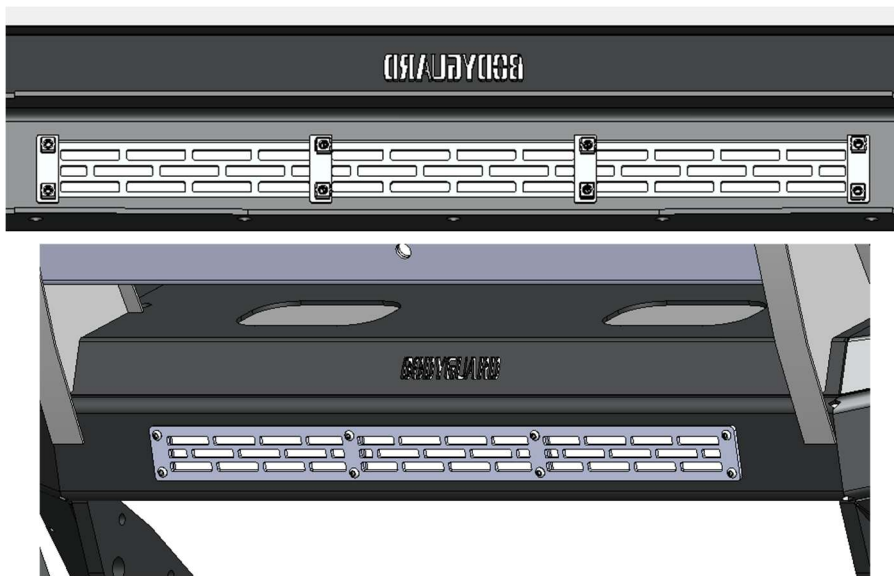
## T2 Series – Front Replacement 2020 - 2023 GMC 2500/3500 HD

### XII. LIGHT BAR MESH

- 1) Install 2x 1/4-20 (.093-.126: Panel Range)  
Zinc Electroplate Spring Steel Cage Nut onto tabs.



- 2) Install mesh into bumper using the mesh tabs and 1/4-20 Hardware.



### XIII. FINISHING UP

- Install shackles.
- Confirm that all hardware is tightened and everything is secure.
- Secure wiring harnesses for lights and sensors.
- Test all lighting and wiring before using vehicle (fog lights, sensors, etc.).

### XIV. MAINTENANCE

- Frequently check that all hardware is tightened and that all wiring and connections are secure.

### FEEDBACK

We'd love to hear from you! Please send your pictures, testimonials, comments, or suggestions to us by email at [info@bodyguardbumpers.com](mailto:info@bodyguardbumpers.com). We frequently use customer pictures for brochures and marketing materials, and we always welcome customer feedback to ensure quality improvements within our company. Thanks for your purchase; we appreciate your business very much!

**Where STRENGTH Meets *Style!*™**