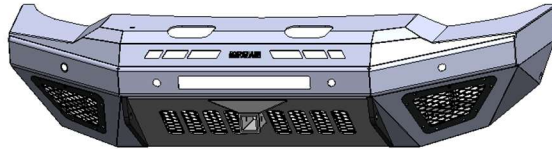




Installation Instructions

**T2 Series – Front Replacement
2020 – 2023 Chevy 2500/3500 HD**

Where STRENGTH Meets *Style!*™



I. SAFETY

THE SAFETY OF YOU AND OTHERS IS VERY IMPORTANT TO US!

In order to minimize this risk and make an informed decision about safety, it is important that you carefully read and follow the installation instructions we have provided.

We urge you to use your own good judgment and allow plenty of time for install.

II. HAZARD CHECKLIST

- Always wear personal protective equipment (PPE) such as: protective eye wear, gloves, close toed shoes, etc.
- We recommend that you use a certified mechanic or shop for professional installation.
- Always set emergency brakes on vehicle and use tire blocks to ensure vehicle stabilization.
- Use caution when lifting, we recommend the use of equipment to help lift bumpers into place.
- Use caution when using power tools such as air ratchet, etc.
- Take caution when installing wiring.
- Perform regular inspections of hardware, bolts, brackets, etc.
- Rigid light brackets are specifically designed to fit Rigid lights, we do not guarantee off brand fitment.
- Our winch mount is designed for Warn and Superwinch products. We do not guarantee off brand fitment.

III. USE & RISK

Bodyguard Products LLC is not responsible for damage to our products, or other subsequent damage that might occur, as a result of misuse or improper installation. While we do manufacture products that appear stronger than factory parts, our products should not be viewed or relied upon as life-saving devices in the event of a collision or rollover. We make no claims relating to airbag compatibility, crashworthiness, or sturdiness. It is the customer's responsibility to check with the vehicle manufacturer or auto dealer regarding airbag compatibility and automobile manufacturer's warranty before installing our products.

IV. PREPARATION

- Ensure personal safety by checking for hazards and identifying risks.
- Check for correct hardware.
- Check for tools needed.
- Use either foam or tape on fenders to prevent scratches to the truck when installing your bumper.
- Please allow approximately 3-4 hours for installation.



Installation Instructions

T2 Series – Front Replacement 2020 – 2023 Chevy 2500/3500 HD

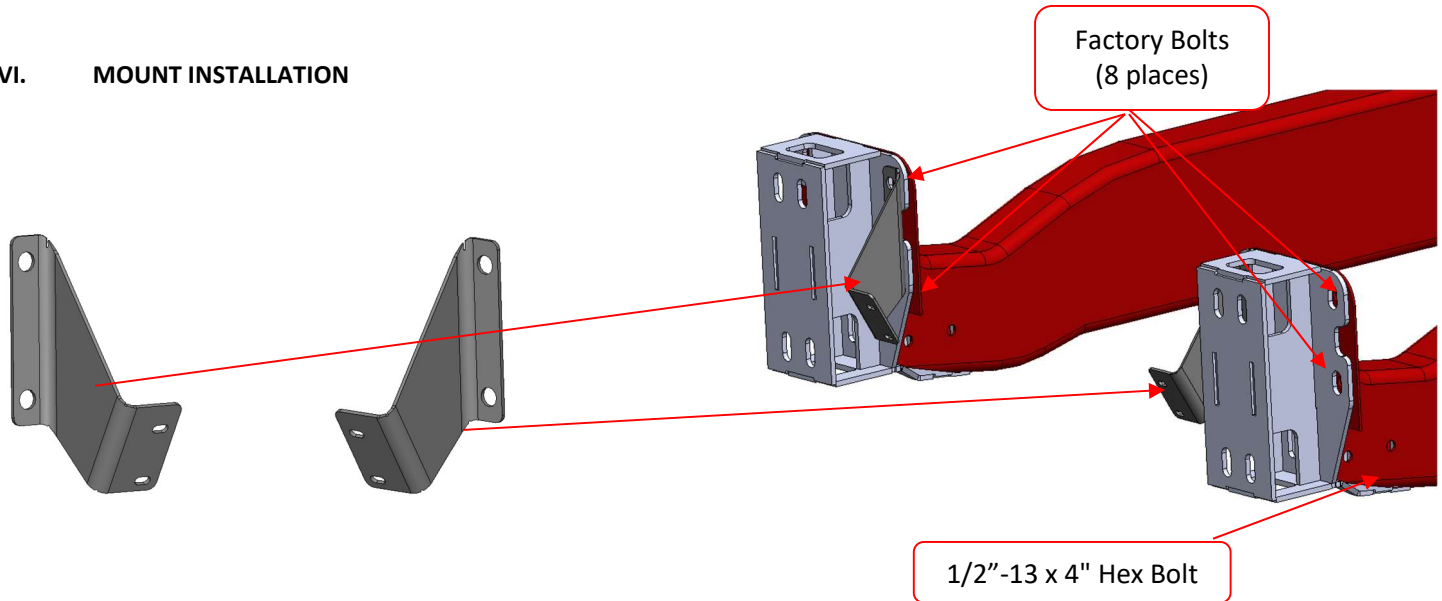
V. Hardware Kit

T2-HK-CFH20+ (A)	T2 Front Mount Kit 20+ Chevy HD	Qty
	1/2"-13 x 1-1/2" Long, Grade 8 HB, Zinc Double Bolt (1.75")	4
	1/2" Yellow Zinc Grade 8 Flat Washer	16
	1/2"-13 Zinc Grade 8 Serrated Hex Flange Nut	12
	1/2"-13 x 4" Yellow Zinc Grade 8 Hex Bolt	4
	Sensor Plugs (Heyco Part #9695)	6
	Camera Wiring Harness #89758	1
T2-HK-FCS (A.01)	T2 Front Center Section	Qty
	3/8"-16 x 1" Yellow Zinc Grade 8 Hex Bolt	10
	3/8"-16 x 2" Yellow Zinc Grade 8 Hex Bolt	6
	3/8"-16 Zinc Grade 8 Serrated Hex Flange Nut	6
	3/8"-16 Clip Nut	10
	3/8" Yellow Zinc Grade 8 Flat Washer	22
T2-HK-FFL (A.01)	T2 Front Fog Light	Qty
	1/4"-20 X 5/8" Stainless Steel SBHCS	22
	1/4"-20 Stainless Steel Serrated Hex Flange Nut	22
	5/16"-18 x 1" Zinc Grade 5 Hex Bolt	8
	5/16" Zinc Grade 5 Flat Washer	16
	5/16"-18 Zinc Grade 8 Serrated Hex Flange Nut	8
T2-HK-FLP (A.01)	T2 Front License Plate	Qty
	M8-1.25 x 25mm Long Grade 8.8 Hex Bolt	2
	M8 Zinc Flat Washer	4
	M8-1.25 Clip Nut	2
	M8x1.25 Zinc Grade 8.8 Serrated Hex Flange Nut	2
	Plastic License Plate Nuts	4
	#14 x 5/8" Zinc License Plate Screw	4

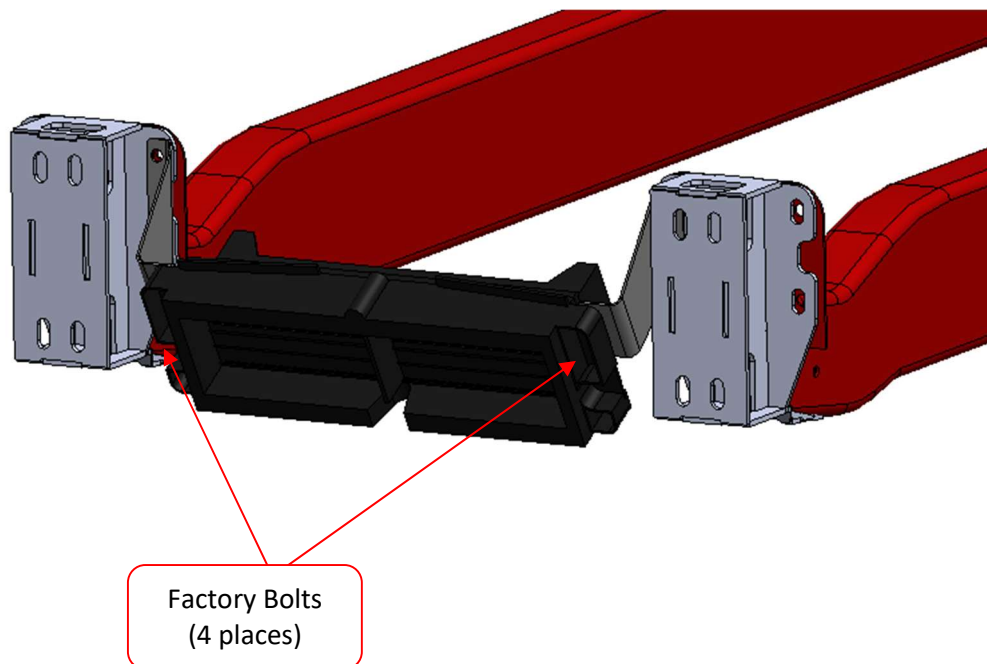
Installation Instructions

**T2 Series – Front Replacement
2020 – 2023 Chevy 2500/3500 HD**

VI. MOUNT INSTALLATION



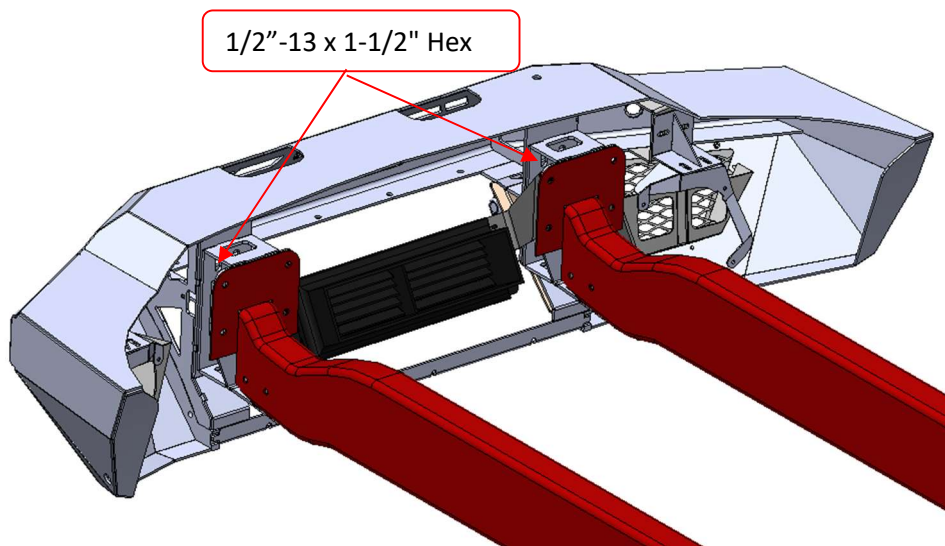
VI. INTERCOOLER INSTALLATION



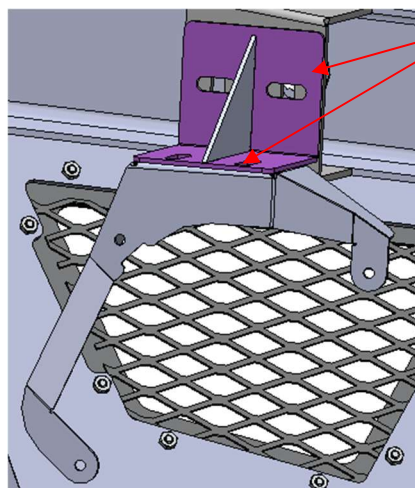
Installation Instructions

**T2 Series – Front Replacement
2020 – 2023 Chevy 2500/3500 HD**

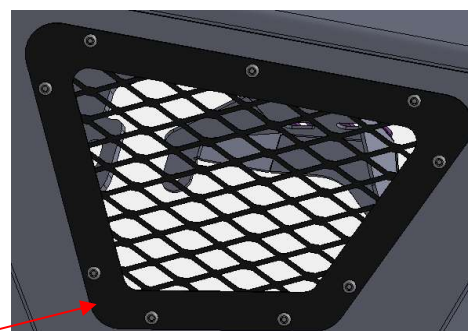
VII. BUMPER INSTALLATION



VIII. FACTORY FOG LIGHT INSTALLATION



5/16"-18 x 1" Zinc Grade 5 Hex Bolts



1/4"-20 X 5/8" Stainless Steel SBHCS

IX. RIGID LIGHTING INSTALLATION (If applicable)

- Install Rigid lights into bolt on assembly. Using Rigid provided hardware. Then bolt on fog light assembly using items 1/4"-20 button head bolts. **Repeat this process for the other side.** See Rigid instructions for wiring.

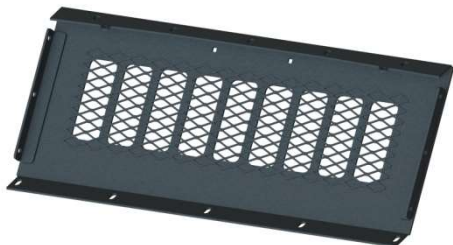


Installation Instructions

**T2 Series – Front Replacement
2020 – 2023 Chevy 2500/3500 HD**

X. CENTER SECTION INSTALLATION

- Follow the instructions that apply to purchased center section.



SKID PLATE

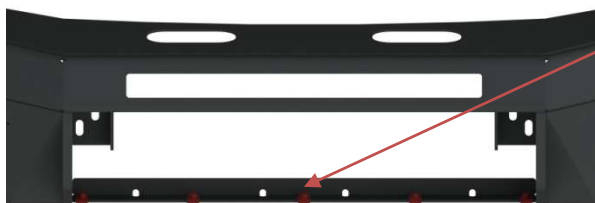


RECEIVER SKID

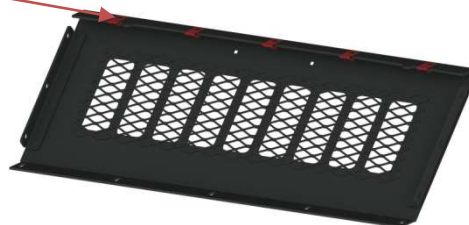


WINCH MOUNT

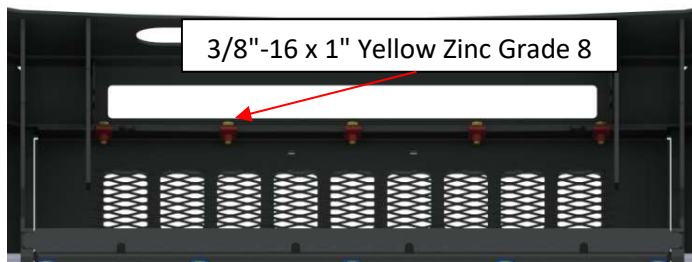
- Place clip nuts onto bumper and center section as shown.



3/8"-16 Clip Nut

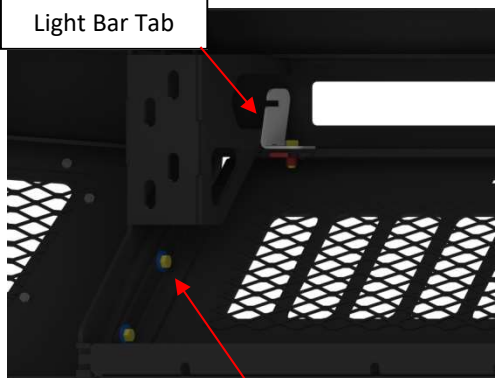


- Bolt center section to bumper using 3/8" hardware.



3/8"-16 x 1" Yellow Zinc Grade 8

Light Bar Tab

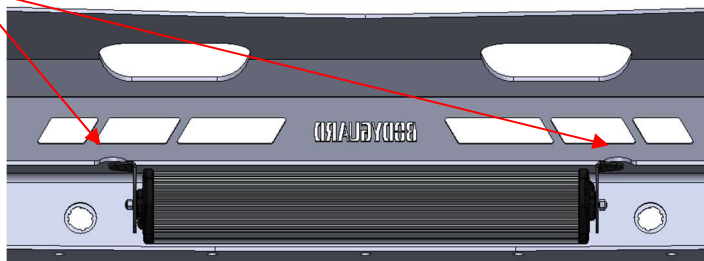


3/8"-16 x 2" Yellow Zinc Grade 8 Hex

- Next bolt center section to 3/4" shackle mounts on both sides using 3/8" hardware.

- Check that all bolts are secure on the skid plate assembly.

- If installing the light bar tabs, the tabs will install with the center section hardware as shown. (Light bar tab replaces washer on top.)



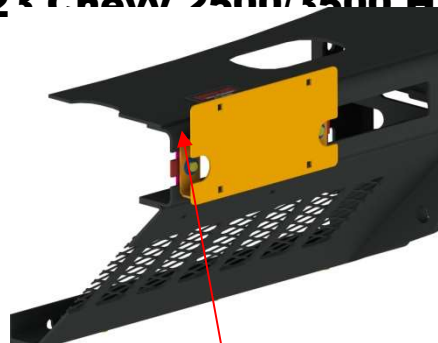
Installation Instructions

**T2 Series – Front Replacement
2020 – 2023 Chevy 2500/3500 HD**

VI. LICENSE PLATE INSTALLATION

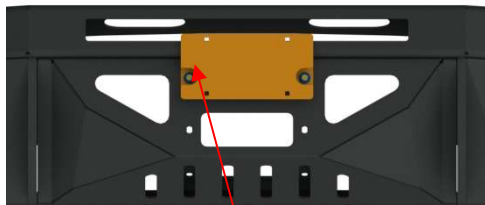
Option 1: CHANNEL MOUNT

- 1) Clip nut onto license plate tab (shown in pink).
- 2) Place tab behind channel and bolt license plate assembly to tab using items M8 Hardware.
- 3) Insert item Plastic License Plate Nuts into license plate bracket and mount license plate using #14 x 5/8" Zinc License Plate Screw and a power drill.



M8-1.25 x 25mm Long Grade 8.8 Hex Bolt

Option 2: WINCH MOUNT

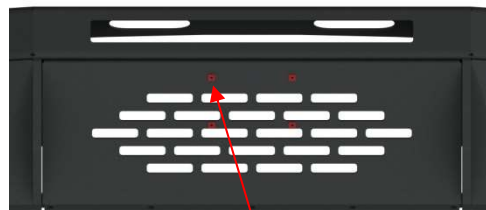


M8-1.25 x 25mm Long Grade 8.8 Hex

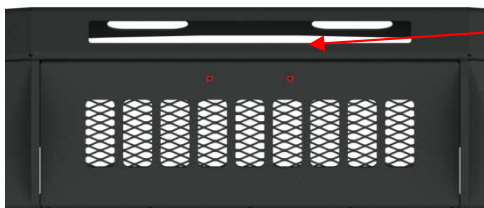
- 1) If installing a low winch mount, the license plate bracket can be mounted using M8 hardware in the holes cut above the fairlead mount.
- 2) Insert item Plastic License Plate Nuts into license plate bracket and mount license plate using #14 x 5/8" Zinc License Plate Screw and a power drill.

Option 3: SMOOTH PLATE SKID

- 1) Insert item Plastic License Plate Nuts into license plate bracket and mount license plate using #14 x 5/8" Zinc License Plate Screw and a power drill.



M8-1.25 x 25mm Long Grade 8.8 Hex

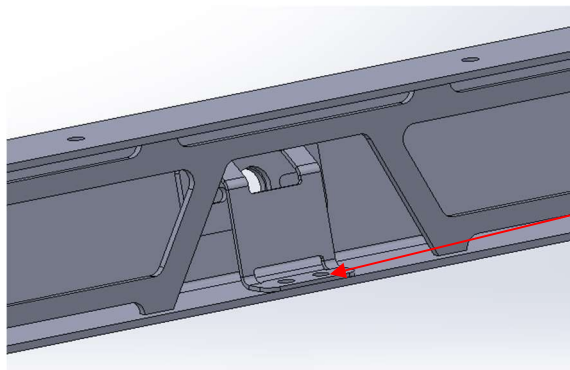


Option 4: TREAD PLATE SKID

- 1) Insert item Plastic License Plate Nuts into license plate bracket and mount license plate using #14 x 5/8" Zinc License Plate Screw and a power drill.

VII. CAMERA INSTALL

1. Install the camera with the provided bracket. This bracket will hold the factory camera in place against the bumper.

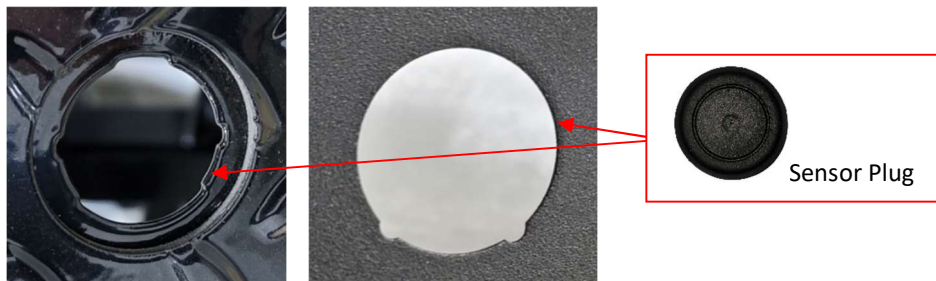


1/4-20 x 3/4
Long,
Stainless
Steel SBHCS

Installation Instructions

**T2 Series – Front Replacement
2020 – 2023 Chevy 2500/3500 HD**

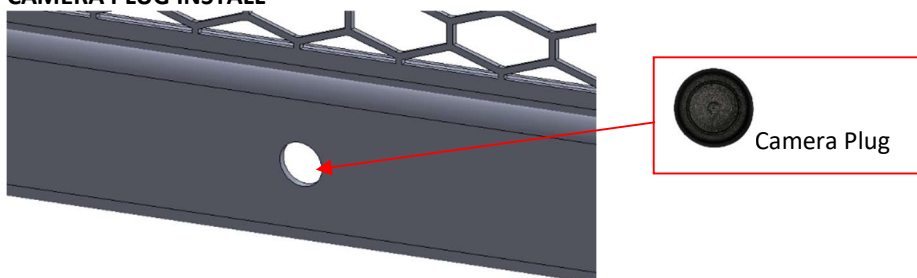
VIII. SENSOR PLUG INSTALL



Note: The above sensors holes may not be the exact same cutout in your bumper. These are just used as examples.

1) If your truck does not have sensors, use provided sensor plugs.

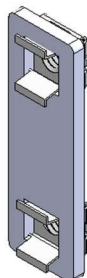
IX. CAMERA PLUG INSTALL



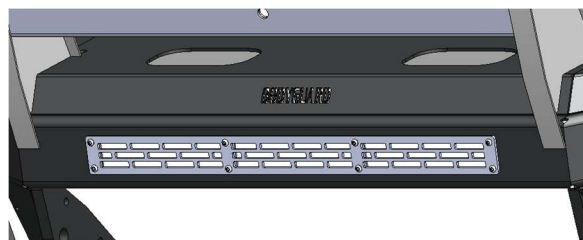
1) If your truck does not have a front camera, use provided camera plug.

X. LIGHT BAR MESH

1) Install **2x 1/4-20 (.093-.126: Panel Range)**
Zinc Electroplate Spring Steel Cage Nut onto tabs.



2) Install mesh into bumper using the mesh tabs and 1/4-20 Hardware.





Installation Instructions

T2 Series – Front Replacement 2020 – 2023 Chevy 2500/3500 HD

XI. FINISHING UP

- Install shackles.
- Confirm that all hardware is tightened and everything is secure.
- Secure wiring harnesses for lights and sensors.
- Test all lighting and wiring before using vehicle (fog lights, sensors, etc.).

XII. MAINTENANCE

- Frequently check that all hardware is tightened and that all wiring and connections are secure.

FEEDBACK

We'd love to hear from you! Please send your pictures, testimonials, comments, or suggestions to us by email at info@bodyguardbumpers.com. We frequently use customer pictures for brochures and marketing materials, and we always welcome customer feedback to ensure quality improvements within our company. Thanks for your purchase; we appreciate your business very much!

Where STRENGTH Meets *Style!*™