

Where **STRENGTH** Meets *Style!*™

I. SAFETY

THE SAFETY OF YOU AND OTHERS IS VERY IMPORTANT TO US!

In order to minimize this risk and make an informed decision about safety, it is important that you carefully read and follow the installation instructions we have provided.

We urge you to use your own good judgment and allow plenty of time for install.

II. HAZARD CHECKLIST

- Always wear personal protective equipment (PPE) such as: protective eye wear, gloves, close toed shoes, etc.
- We recommend that you use a certified mechanic or shop for professional installation.
- Always set emergency brakes on vehicle and use tire blocks to ensure vehicle stabilization.
- Use caution when lifting, we recommend the use of equipment to help lift bumpers into place.
- Use caution when using power tools such as air ratchet, etc.
- Take caution when installing wiring.
- Perform regular inspections of hardware, bolts, brackets, etc.
- Rigid light brackets are specifically designed to fit Rigid lights, we do not guarantee off brand fitment.
- Our winch mount is designed for Warn and Superwinch products. We do not guarantee off brand fitment.

III. USE & RISK

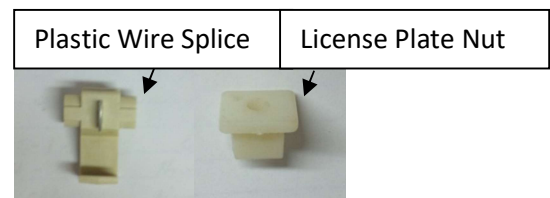
Bodyguard Products LLC is not responsible for damage to our products, or other subsequent damage that might occur, as a result of misuse or improper installation. While we do manufacture products that appear stronger than factory parts, our products should not be viewed or relied upon as life-saving devices in the event of a collision or rollover. We make no claims relating to airbag compatibility, crashworthiness, or sturdiness. It is the customer's responsibility to check with the vehicle manufacturer or auto dealer regarding airbag compatibility and automobile manufacturer's warranty before installing our products.

IV. PREPARATION

- Ensure personal safety by checking for hazards and identifying risks.
- Check for correct hardware.
- Check for tools needed.
- Use either foam or tape on fenders to prevent scratches to the truck when installing your bumper.
- Please allow approximately 3-4 hours for installation.

V. PARTS LIST

DO NOT SUBSTITUTE OR USE ANY OTHER
HARDWARE OTHER THAN LISTED HERE.



Installation Instructions

T2 Series – Front Replacement 2019 - 2023 1500

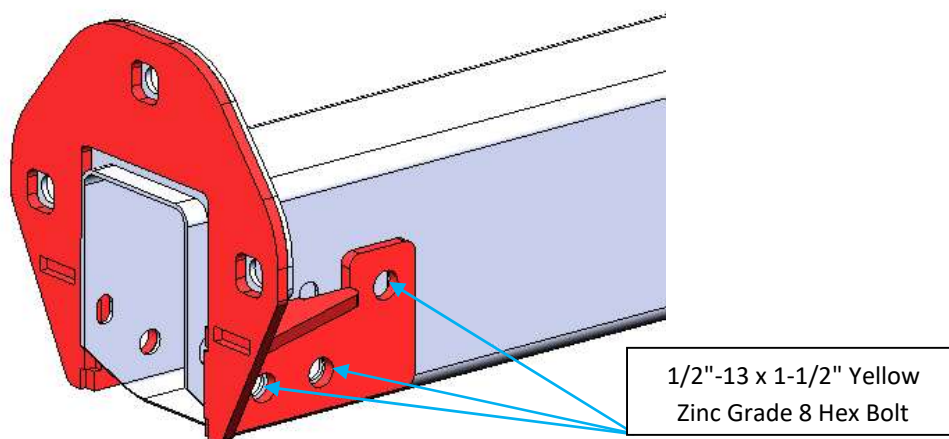
#	T2 Front Mount Kit 2019+ GM 1500	QTY
1	1/2"-13x 1 1/2" Long, Grade 8 HB	12
2	1/2" Washer, Grade 8	24
	1/2"-13 Grade 8, Steel Serrated Flange Nut	12
4	1/4"-20 x 5/8 Long, Stainless Steel SBHCS	6
5	1/4"-20 Hex Grade 5 Serrated Flange Nut, Stainless Steel	6
6	Sensor Plugs	4

#	T2 Front Center Section	QTY
7	3/8"-16 x 1 Long, Grade 8 HB	10
8	3/8"-16 x 2 Long, Grade 8 HB	6
9	3/8"-16 Hex Serrated Flange Nut	6
10	3/8"-16 Clip Nut	10
11	3/8" Washer, Grade 8 USS	22

#	T2 Front Fog Light	QTY
1		18
2	1/4"-20 x 5/8 Long, Stainless Steel SBHCS	
3	1/4"-20 Hex Serrated Flange Nut, Stainless Steel	18
4	5/16"-18 X 1" Grade 5 Bolt	8
5	5/16" Flat Washer Grade 5	16
6	5/16"-18 Grade 5 Steel Serrated Hex nut	8

#	T2 Front License Plate	QTY
1		2
7	(Metric) M8x1.25, 25mm long	
8	(Metric) M8 Washer	4
9	(Metric) M8x1.25 clip nut	2
10	(Metric) M8x1.25, 25 mm Serrated Flange Nut	2
11	Plastic License Plate Nuts	4
12	#14 x 5/8" Zinc License Plate Screw	4

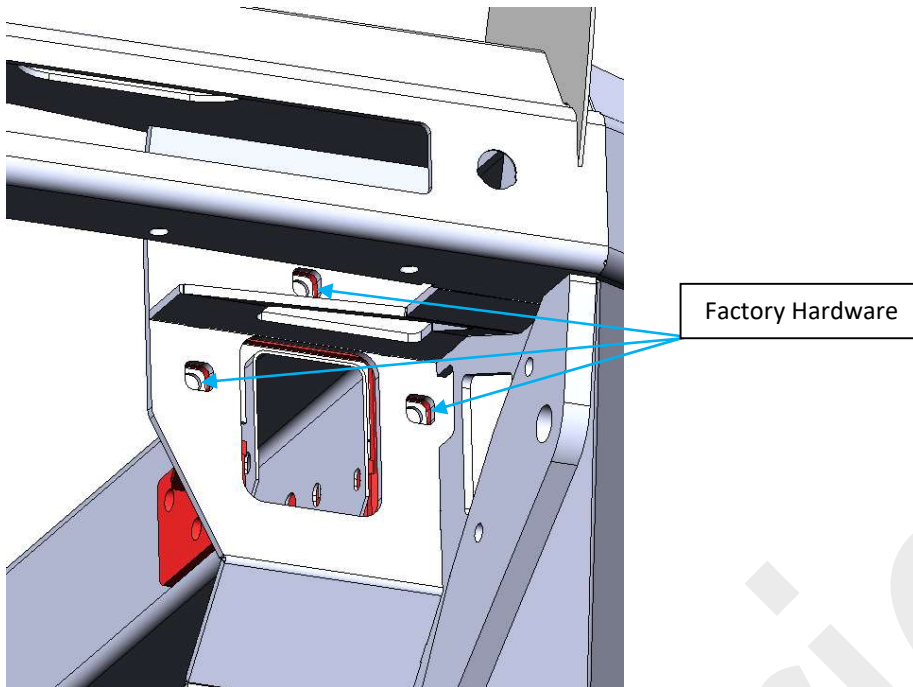
VI. BUMPER INSTALLATION



1. Bolt the frame stiffeners to the truck frame using 5x 1/2"-13 x 1-1/2" Yellow Zinc Grade 8 Hex Bolt, Nut, and Washer.

Installation Instructions

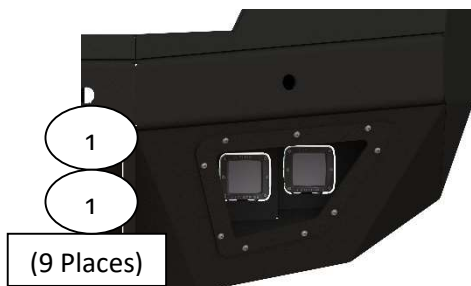
**T2 Series – Front Replacement
2019 - 2023 1500**



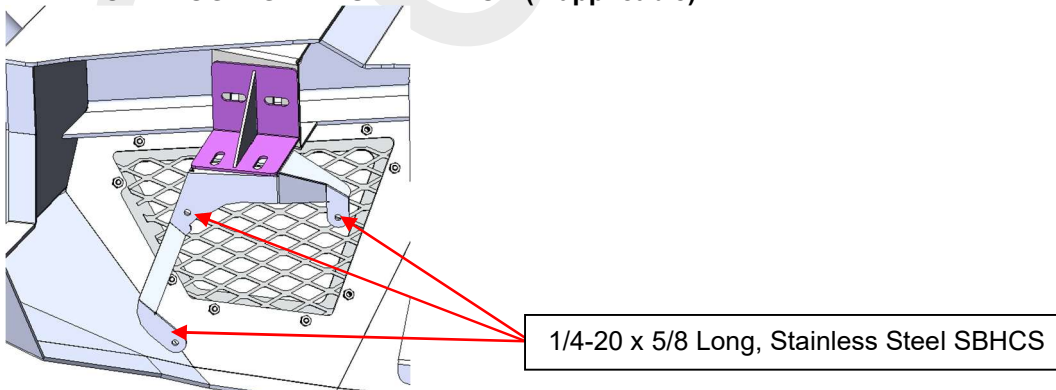
2. Finally bolt the bumper to the truck frame using factory hardware.

VII. RIGID LIGHTING INSTALLATION (If applicable)

- Install Rigid lights into bolt on assembly. Using Rigid provided hardware. Then bolt on fog light assembly using items **(12)** and **(13)**. **Repeat this process for the other side.** See Rigid instructions for wiring.
(Rigid lights are only for off-road use and not DOT approved)

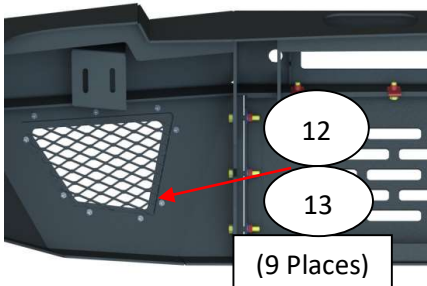


VIII. OEM FOG LIGHT INSTALLATION (If applicable)



Installation Instructions

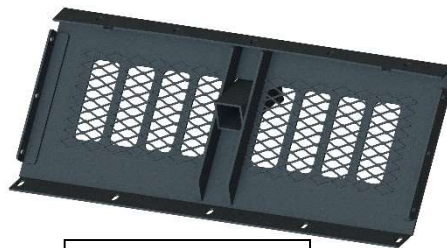
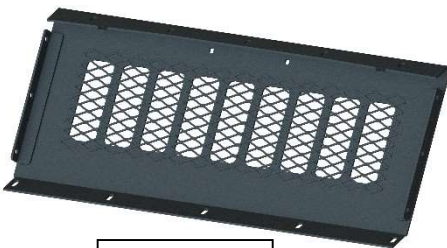
**T2 Series – Front Replacement
2019 - 2023 1500**



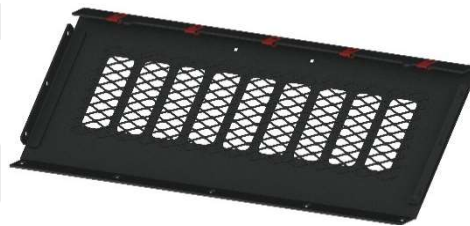
4) Next Install mesh covers using items (12) and (13), repeat steps 1- 4 for the other side.

IX. CENTER SECTION INSTALLATION

- Follow the instructions that apply to purchased center section.



1) Place item (10) onto bumper and center section as shown.



2) Bolt center section to bumper using items (7) and (11) to prepositioned item (10) on bumper.

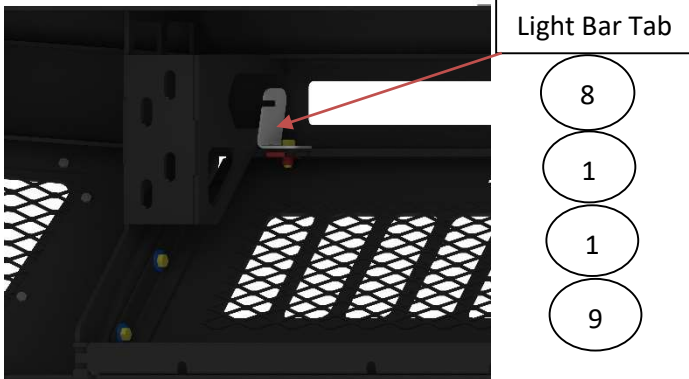


3) Next bolt center section to 3/4" shackle mounts on both sides using items (8), (9) and (11).

Installation Instructions

T2 Series – Front Replacement 2019 - 2023 1500

- 4) Check that all bolts are secure on the skid plate assembly.
- 5) If installing the light bar tab, the tab will install with the center section hardware as shown. (Light bar tab replaces washer on top.)



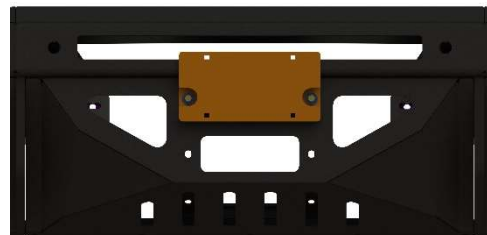
X. SENSOR BRACKET INSTALLATION

- 1) Insert factory sensor clips into bumper.
- 2) Insert sensors into clips.
- 3) If truck does not have sensors, use provided sensor plugs, item **(6)**, to plug sensor holes.

XI. LICENSE PLATE INSTALLATION

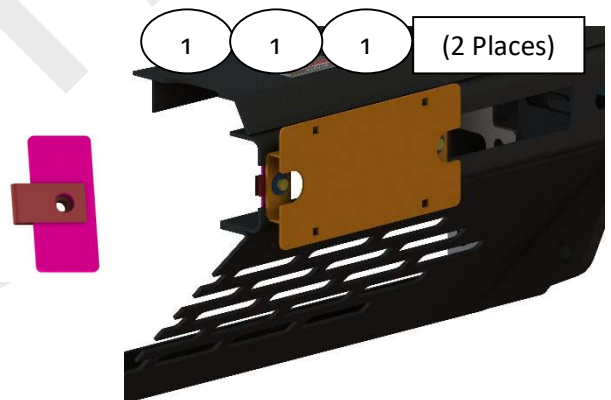
CHANNEL MOUNT

- 1) Clip item **(19)** onto license plate tab (shown in pink).
- 2) Place tab behind channel and bolt license plate assembly to tab using items **(17)** and **(18)**.
- 3) Insert item **(21)** onto license plate bracket and mount license plate using item **(22)** and a power drill.



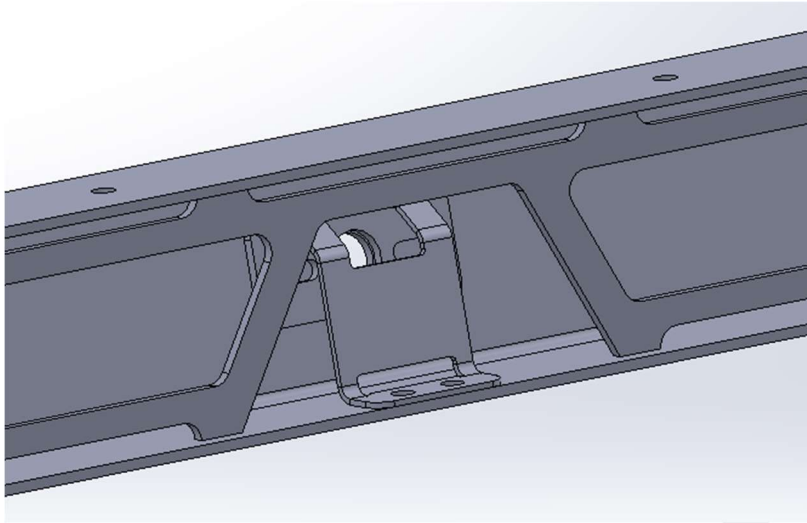
WINCH MOUNT

- 1) If installing a low winch mount, the license plate bracket can be installed using items **(7)**, **(9)**, and **(11)**.
- 2) Insert item **(21)** license plate bracket and mount license plate using item **(22)** and a power drill.

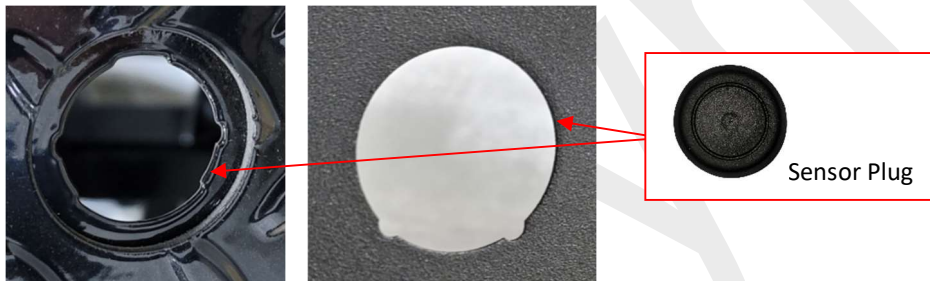


XII. CAMERA INSTALL

1. Install the camera with the provided bracket. This bracket will hold the factory camera in place.



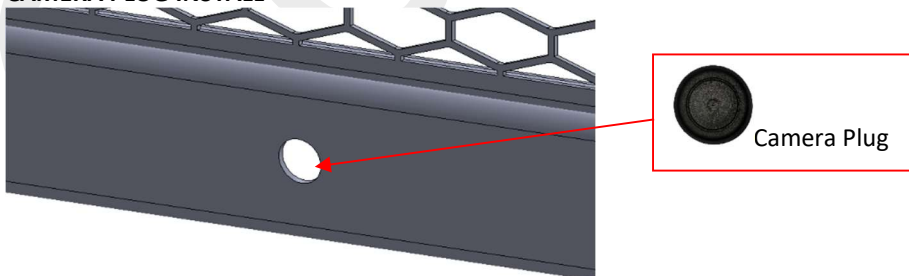
XIII. SENSOR PLUG INSTALL



Note: The above sensors holes may not be the exact same cutout in your bumper. These are just used as examples.

- 1) If your truck does not have sensors, use provided sensor plugs.

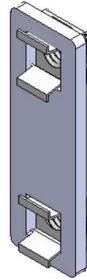
XIV. CAMERA PLUG INSTALL



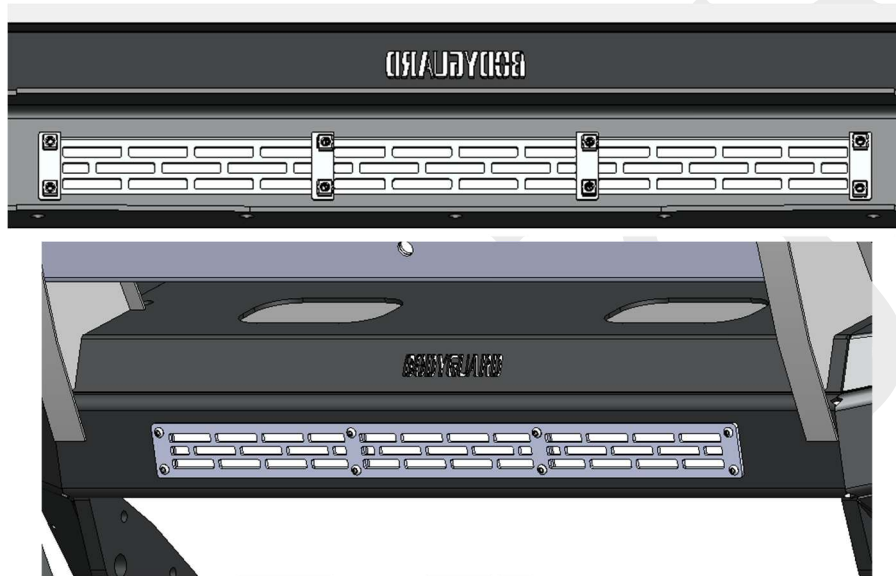
- 1) If your truck does not have a front camera, use provided camera plug.

XV. LIGHT BAR MESH

- 1) Install **2x 1/4-20 (.093-.126: Panel Range)**
Zinc Electroplate Spring Steel Cage Nut onto tabs.



- 2) Install mesh into bumper using the mesh tabs and 1/4-20 Hardware.



XVI. FINISHING UP

- Install shackles.
- Confirm that all hardware is tightened and everything is secure.
- Secure wiring harnesses for lights and sensors.
- Test all lighting and wiring before using vehicle (fog lights, sensors, etc.).

XVII. MAINTENANCE

- Frequently check that all hardware is tightened and that all wiring and connections are secure.

FEEDBACK

We'd love to hear from you! Please send your pictures, testimonials, comments, or suggestions to us by email at info@bodyguardbumpers.com. We frequently use customer pictures for brochures and marketing materials, and we always welcome customer feedback to ensure quality improvements within our company. Thanks for your purchase, we appreciate your business very much!

Where STRENGTH Meets *Style!*™