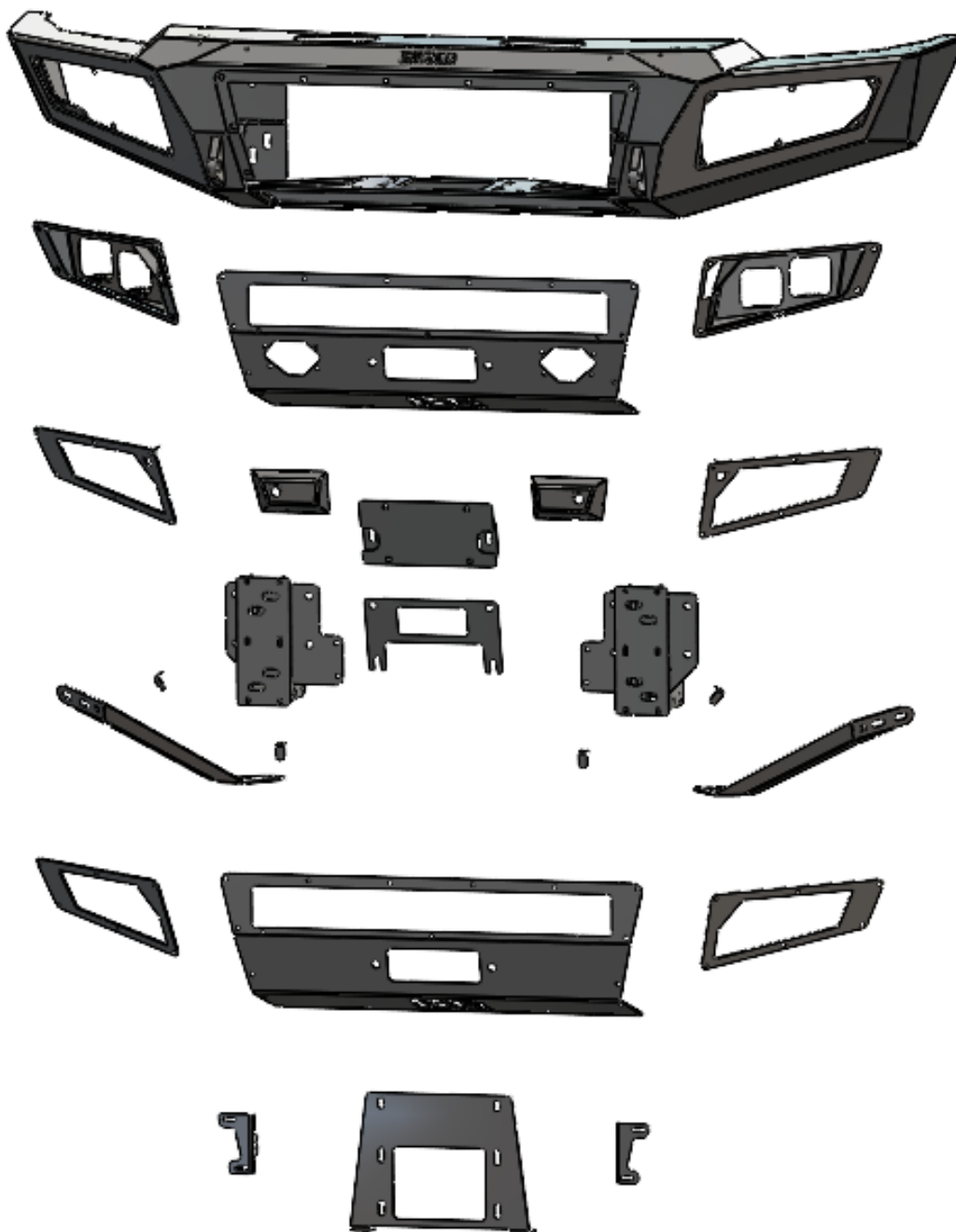
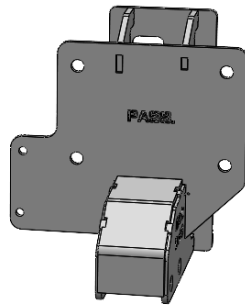
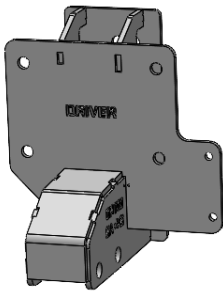


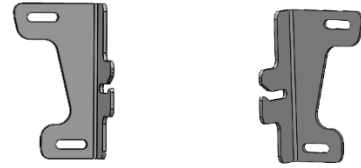
# INSTALLATION GUIDE

## PARTS

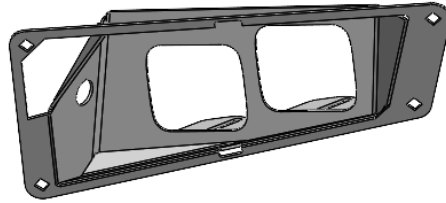
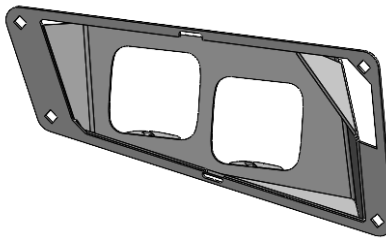




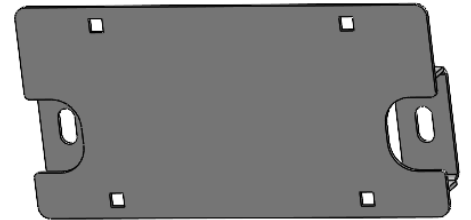
Driver and Passenger Truck



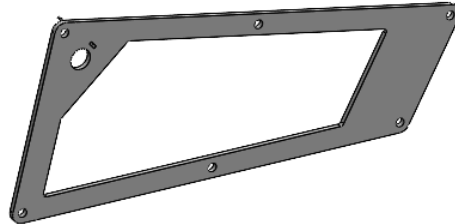
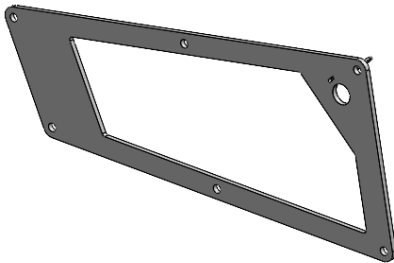
Driver and Passenger Light Bar Mounts



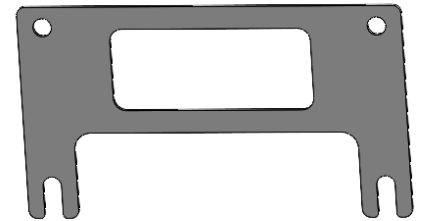
Driver and Passenger Fog Light Buckets



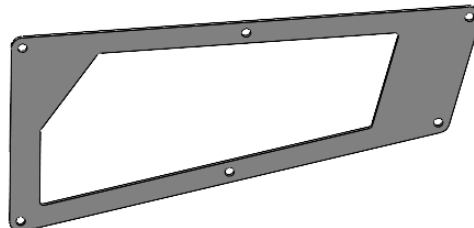
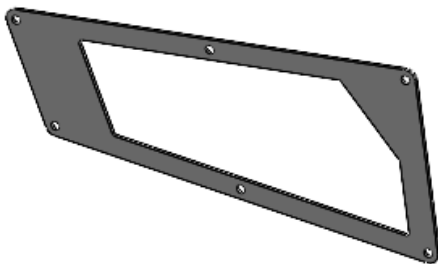
License Plate Bracket



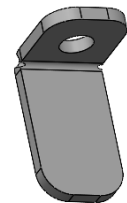
Driver and Passenger Fog Light Plates w/ Sensors



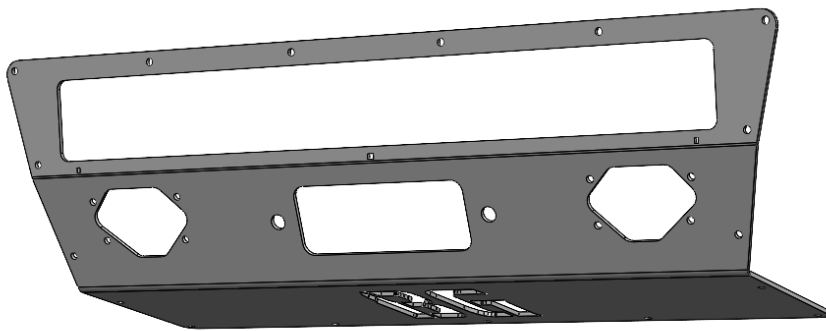
Winch Mount License Plate Bracket Offset



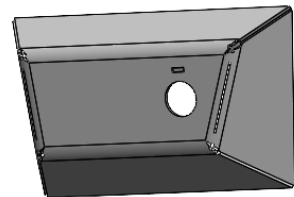
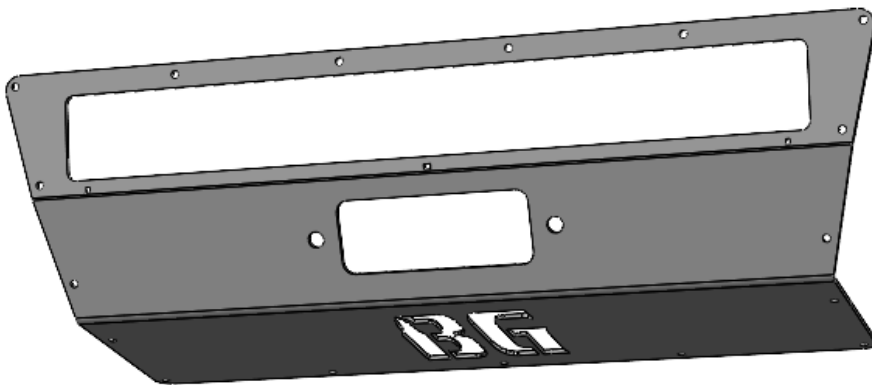
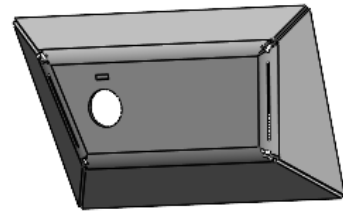
Driver and Passenger Fog Light Plates w/out Sensors



Sensor Tabs x4

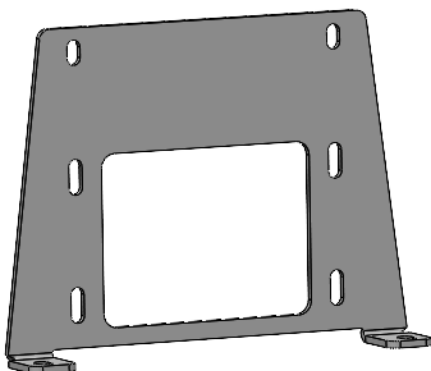


**Skid Plate w/ Sensors**

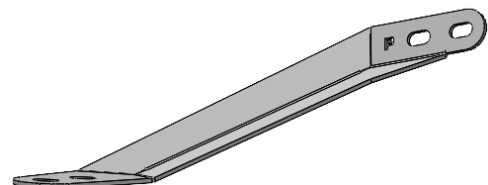
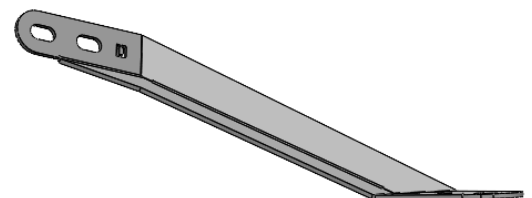


**Driver and Passenger  
Sensor Pods**

**Skid Plate w/out Sensors**



**Front Mount Winch Plate**

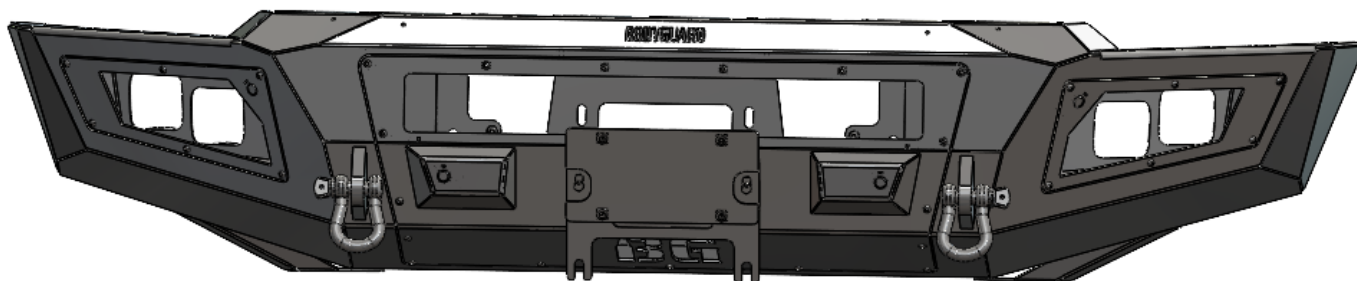


**Driver and Passenger Wing Braces**

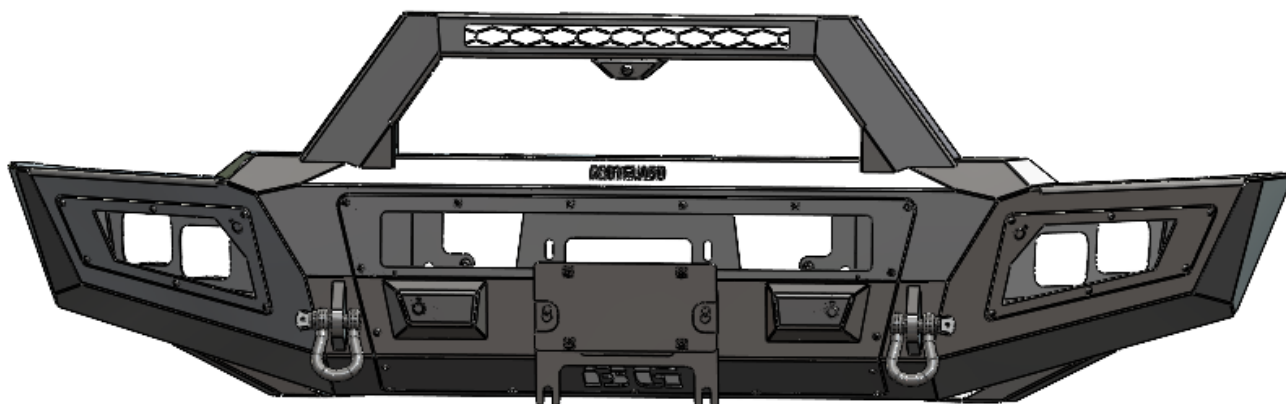
# HARDWARE KIT

<b><u>A2 Front License Plate</u></b>	<b><u>Qty:</u></b>
M8-1.25 x 25mm Long Grade 8.8 Hex Bolt	2
M8x1.25 Zinc Grade 8.8 Serrated Hex Flange Nut	2
Plastic License Plate Nuts	4
#14 x 5/8" Zinc License Plate Screw	4
5/16" Zinc Grade 5 Flat Washer	4
<b><u>A2 Front Center Section</u></b>	<b><u>Qty</u></b>
1/4-20 x 5/8 Long, Stainless Steel SBHCS	20
1/4-20 x 3/4 Long, Stainless Steel SBHCS	5
1/4-20 Hex Grade 5 Serrated Flange Nut, Stainless Steel	5
1/4-20 (.093-.126: Panel Range) Zinc Electroplate Spring Steel Cage Nut	4
<b><u>A2 Front Formed Sport Bar</u></b>	<b><u>Qty</u></b>
1/4-20 x 5/8 Long, Stainless Steel SBHCS	6
1/4-20 Hex Grade 5 Serrated Flange Nut, Stainless Steel	4
1/4-20 (.093-.126: Panel Range) Zinc Electroplate Spring Steel Cage Nut	2
<b><u>A2 Front Fog Light Assembly</u></b>	<b><u>Qty:</u></b>
1/4-20 x 5/8 Long, Stainless Steel SBHCS	20
1/4-20 (.093-.126: Panel Range) Zinc Electroplate Spring Steel Cage Nut	20
<b><u>A2 Front Winch Mount</u></b>	<b><u>Qty:</u></b>
3/8"-16 x 1" Yellow Zinc Grade 8 Hex Bolt	4
3/8" Yellow Zinc Grade 8 Flat Washer	8
3/8"-16 Zinc Grade 8 Serrated Hex Flange Nut	4
<b><u>A2 Front Mount 24 GMC</u></b>	<b><u>Qty:</u></b>
1/2"-13 x 1-1/2" Long, Grade 8 HB, Zinc Double Bolt (1.75")	4
1/2" Washer, Grade 8 Zinc-Yellow	8
1/2"-13 Grade 8 Steel Serrated Flange Nut Zinc	8
5/16"-18 x 3/4" Long, Stainless Steel SBHCS	4
5/16" Zinc Grade 5 Flat Washer	8
5/16"-18 Zinc Grade 8 Serrated Hex Flange Nut	4
<b><u>A2 EXTREME Guard</u></b>	<b><u>Qty:</u></b>
1/4-20 x 5/8 Long, Stainless Steel SBHCS	8
1/4-20 Hex Grade 5 Serrated Flange Nut, Stainless Steel	8
Camera Plug 9691 17mm	1

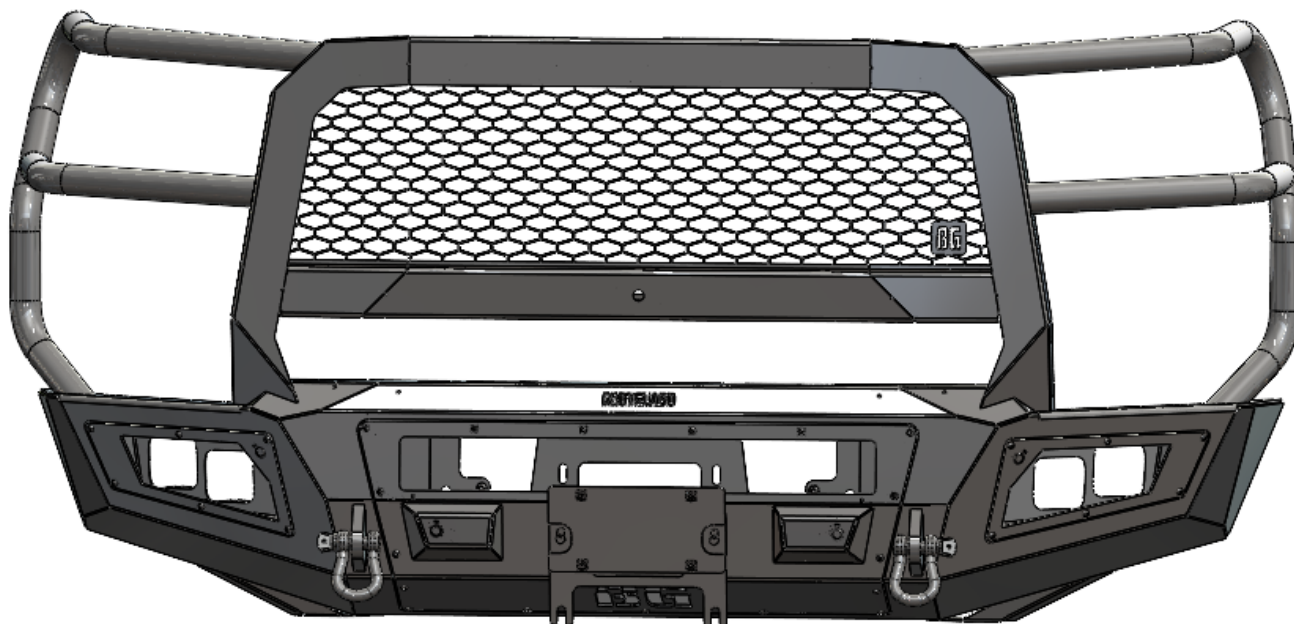
## STYLE OPTIONS



Base



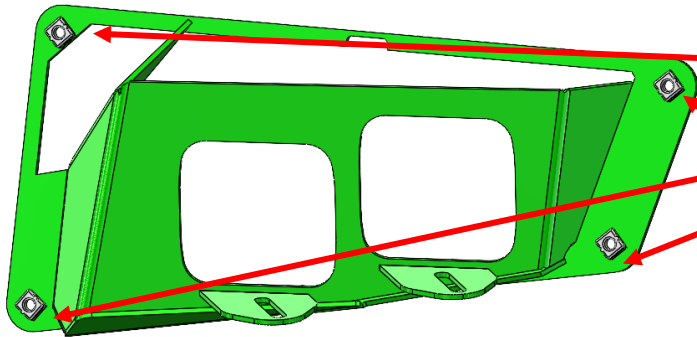
Sport



Extreme

# FOG LIGHT BUCKET INSTALL

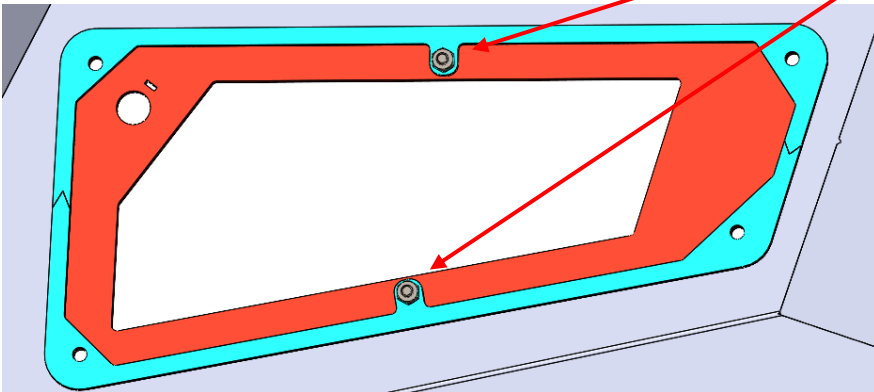
1. Insert (4) cage nuts into the fog light bucket as shown.
2. Use (2) 1/4-20 x 5/8 Long, Stainless Steel SBHCS and hex nuts to attach the fog light plate (red) to the welded trim ring (teal)
3. Attach the fog light bucket to the plate using (4) 1/4-20 x 5/8 Long, Stainless Steel SBHCS and the cage nuts installed in step 1.



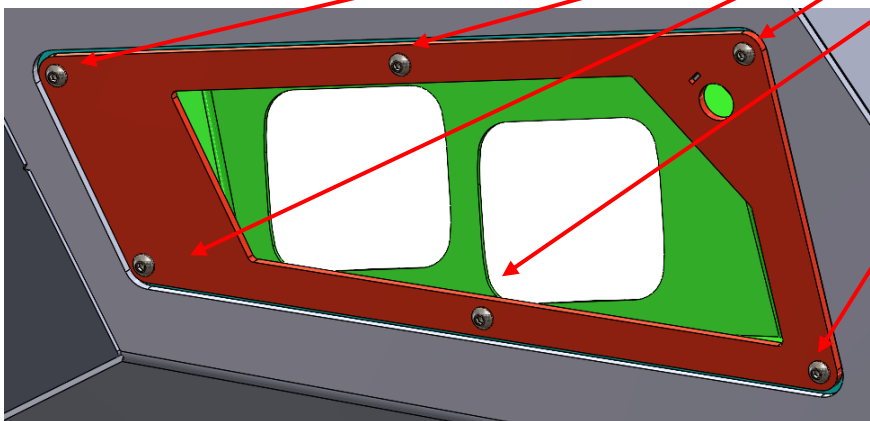
(4) - 1/4-20 (.093-.126: Panel Range) Zinc Electroplate Spring Steel Cage Nut



2x - 1/4-20 Hex Grade 5 Serrated Flange Nut, Stainless Steel

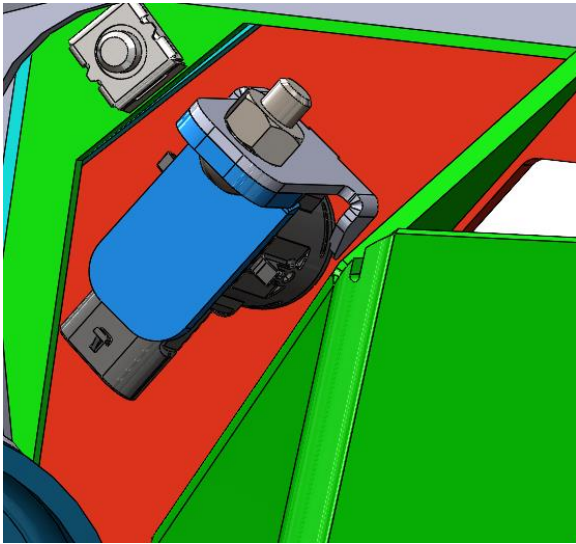


(6) - 1/4-20 x 5/8 Long, Stainless Steel SBHCS

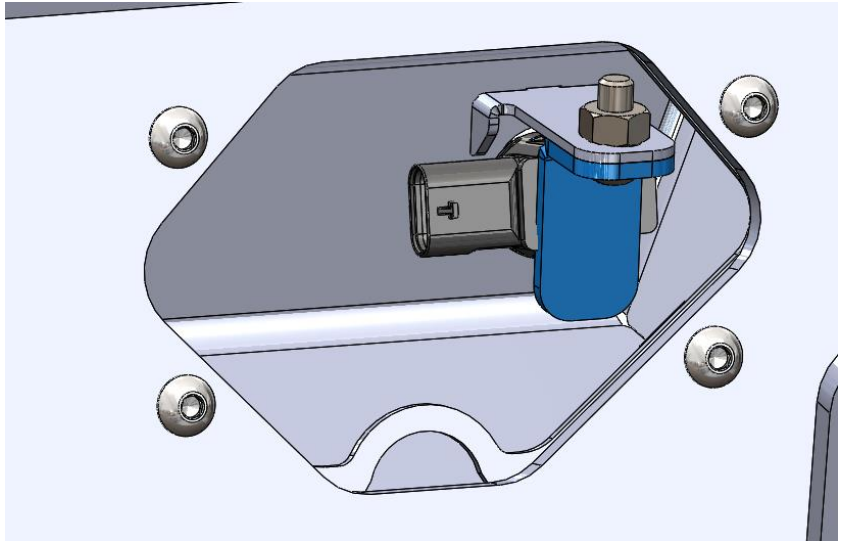


## PARKING SENSOR INSTALL

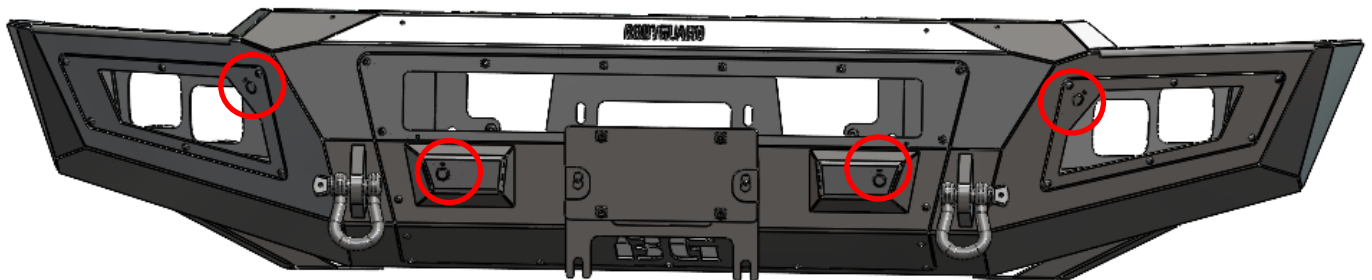
1. Then install the sensor tab over the sensor shown below. Slide the sensor and sensor tab into position and tighten down with a 1/4"-20 x 3/4" BHCS. Plug the parking sensors into the harness and let the center mesh and fog light trim rings loosely hang down.



Fog Lights

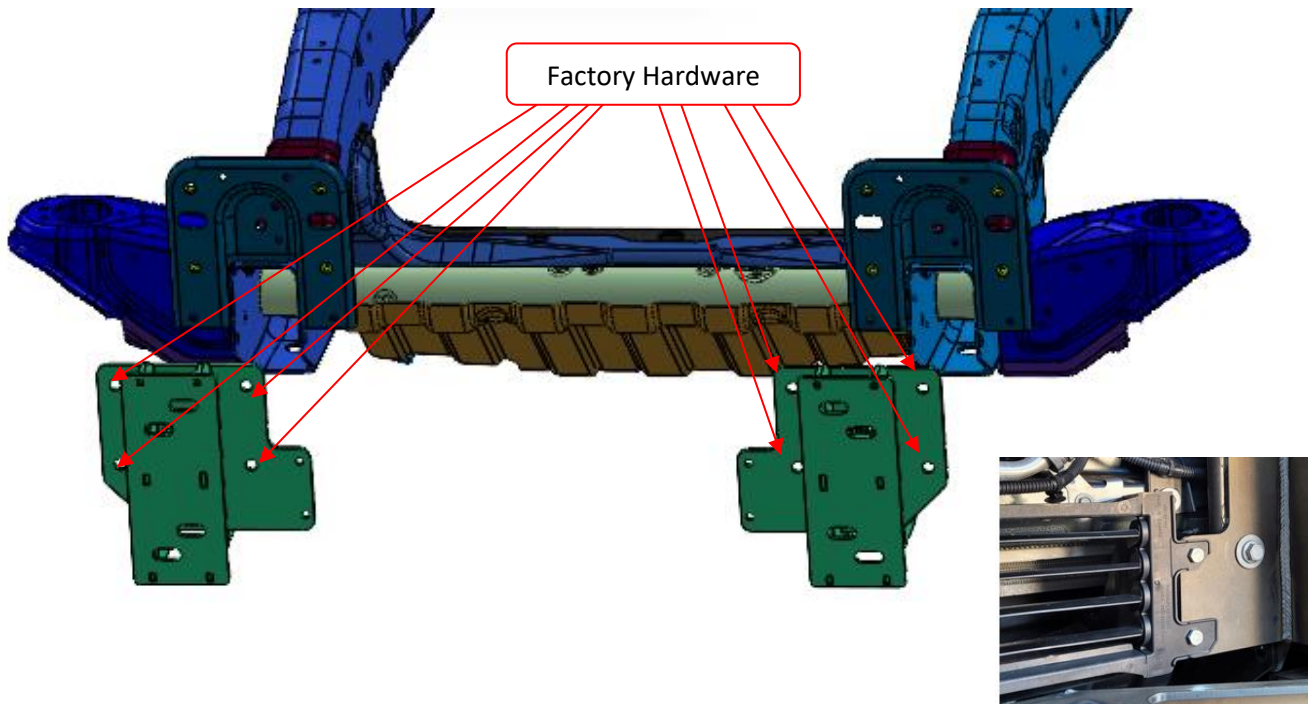


Sensor Pods

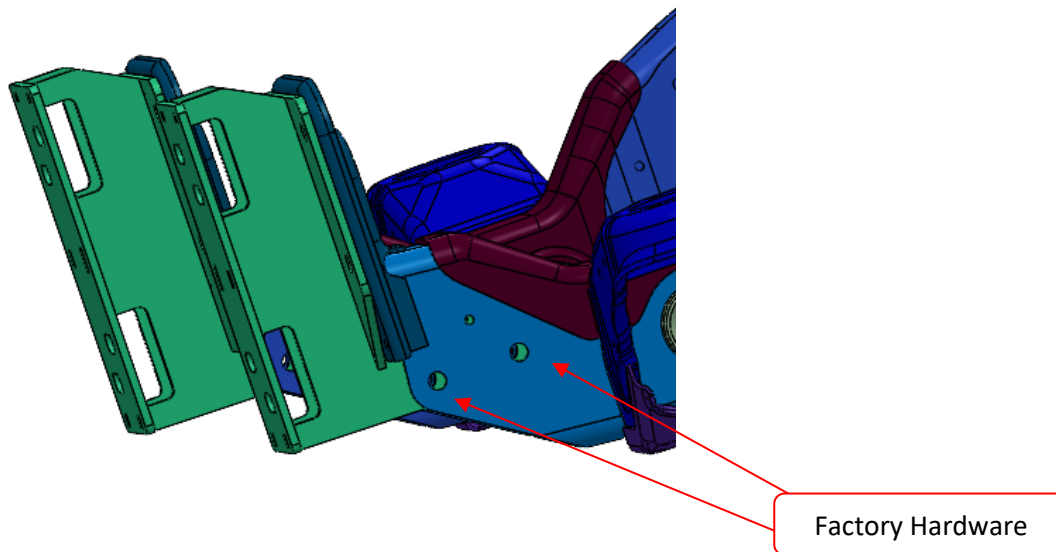




# BUMPER MOUNT INSTALL



1. Install the mounts on the truck. The mounts will reuse the factory hardware.
  2. Next install the adaptive shutters to the mounts. This will use 4x 5/16"-18 x 3/4" Long, Stainless Steel SBHCS.
- Note:** Take note of the top left bolt used to secure the adaptive shutters. The bolt will have to face outwards to avoid the line that is located behind it.

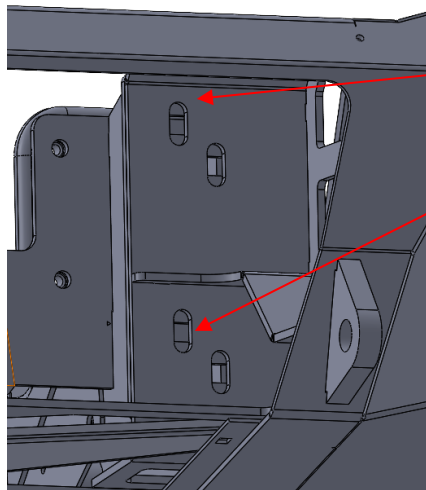


3. Use the factory bolts that were used to secure the factory tow hooks.

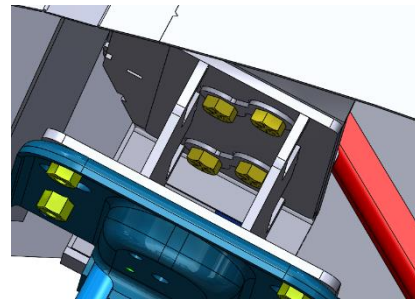


# BUMPER INSTALL

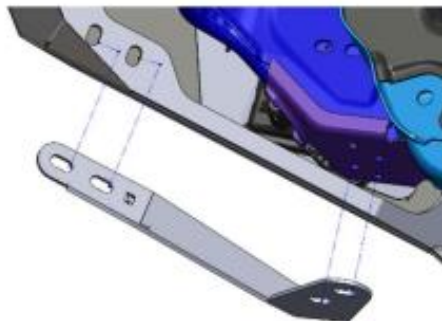
1. Secure the bumper to the mounts with **4x 1/2"-13 x 1-1/2" Long, Grade 8 HB, Zinc Double Bolt (1.75")**



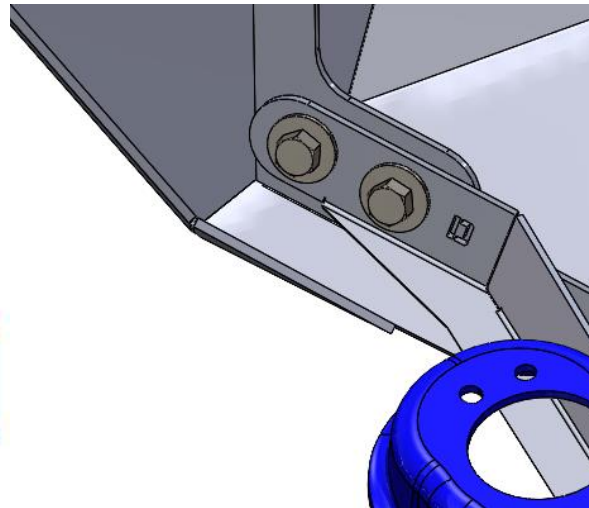
Use Double Bolts to  
secure Mounts to  
Bumper.



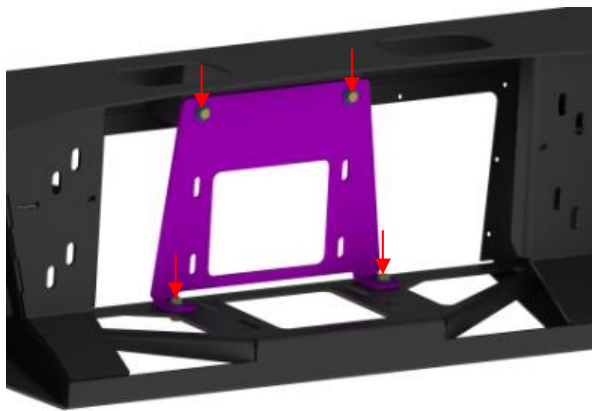
2. Attache wing support brackets to bumper and frame as shown using **4x 3/8"-16x1" Long, Yellow Zinc Hex Screws/**



**Wing Support Bracket**  
**3/8" – 16 x 1" Yellow Zinc Hex Screws.**



## FRONT MOUNT WINCH INSTALL



Use (4) 3/8"-16 x 1" Yellow Zinc  
Grade 8 Hex Bolt

NOTE: Foot Down only winch installs will not require the  
use of this bracket. Most small frame winches will allow  
light bar installation.

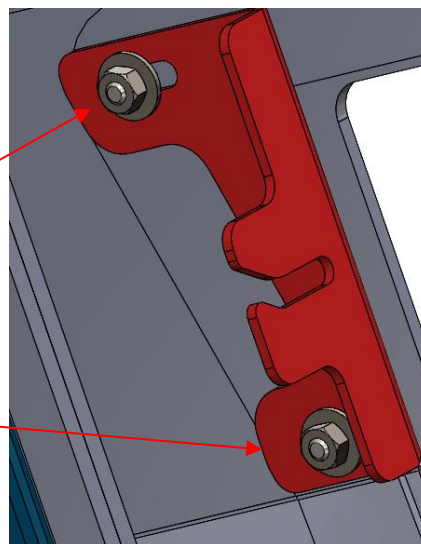
## LIGHT BAR BRACKET INSTALL



(2) - 1/4-20 x 3/4 Long, Stainless Steel  
SBHCS



(2) - 1/4-20 Hex Grade 5 Serrated Flange  
Nut, Stainless Steel and washers.



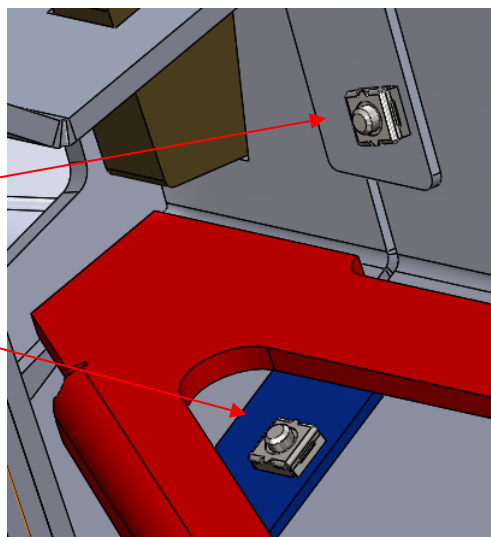
## CENTER SECTION INSTALL



(13) - 1/4-20 (.093-.126: Panel Range) Zinc  
Electroplate Spring Steel Cage Nut

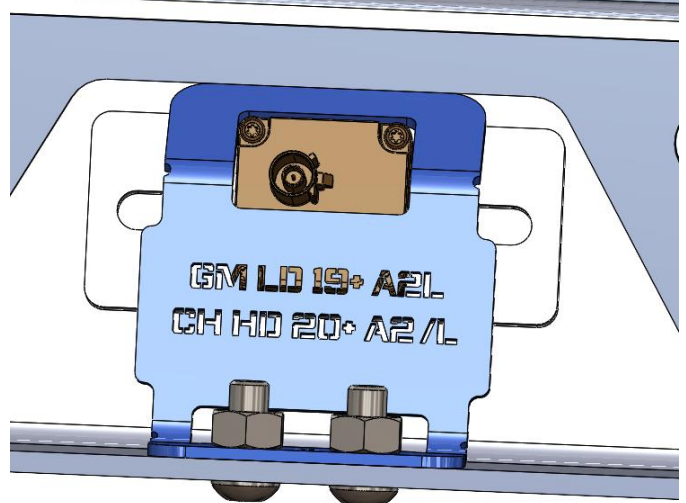


(13) - 1/4-20 x 5/8 Long, Stainless Steel  
SBHCS

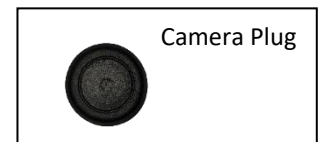
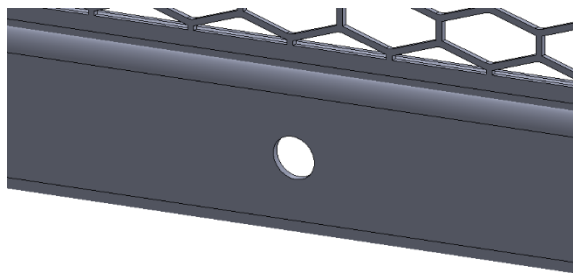


## EXTREME BAR CAMERA INSTALL *(For optional extreme bar only)*

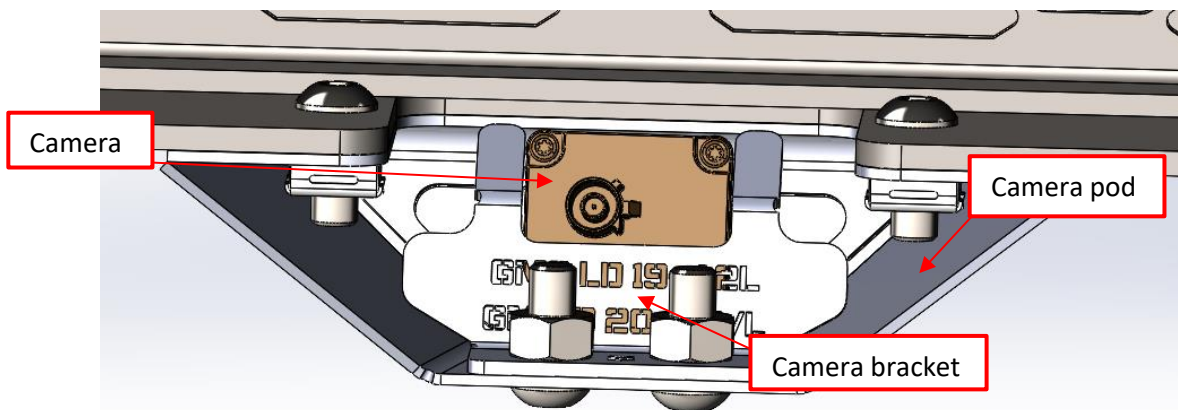
1. Place Camera into square spacer that is welded to the bumper. Then install the blue bracket with **(2) 1/4-20 x 5/8 Long, Stainless Steel SBHCS** behind the camera. This bracket will press the camera against the spacer securing the camera to the grille guard.



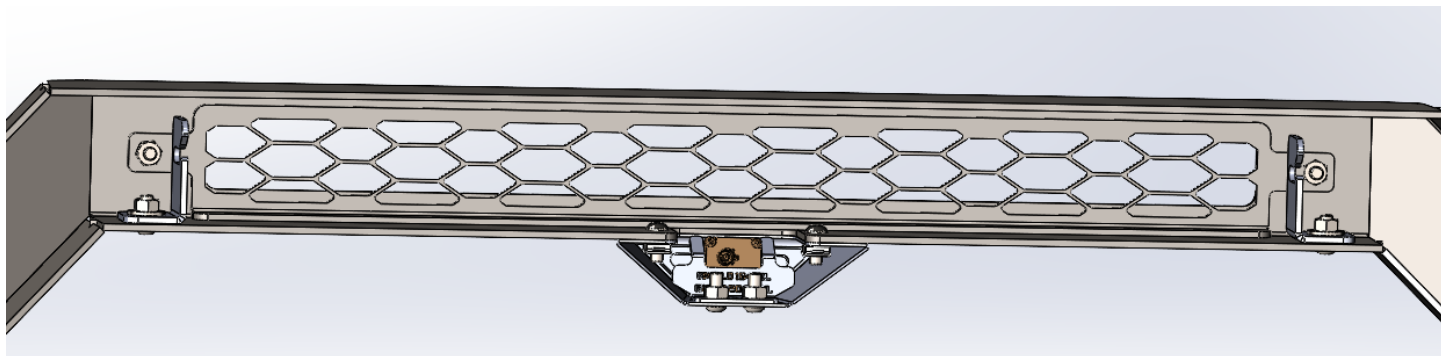
2. If you do not have a camera, we provide a camera hole plug that can be installed in the hole.



1. Install the camera pod to the sport bar using (2) 1/4"-20 cage nuts and (2) 1/4"-20 x 3/4" BHCS. Then install the camera into the pod and secure with the camera bracket using (2) 1/4"-20 BHCS and flange nuts.



2. Then install the sport bar mesh using 2x 1/4"-20 x 3/4" BHCS and flange nuts. Then install your light bar using the light bar brackets if applicable.



# SAFETY

## THE SAFETY OF YOU AND OTHERS IS VERY IMPORTANT TO US!

To minimize this risk and make an informed decision about safety, it is important that you carefully read and follow the installation instructions we have provided.

We urge you to use your own good judgment and allow plenty of time for installation.

# HAZARD CHECKLIST

1. Always wear personal protective equipment (PPE) such as: protective eye wear, gloves, close toed shoes, etc.
2. We recommend that you use a certified mechanic or shop for professional installation.
3. Always set emergency brakes on the vehicle and use tire blocks to ensure vehicle stabilization.
4. Use caution when lifting, we recommend the use of equipment to help lift bumpers into place.
5. Use caution when using power tools such as air ratchet, etc.
6. Take caution when installing wiring.
7. Perform regular inspections of hardware, bolts, brackets, etc.
8. Rigid light brackets are specifically designed to fit Rigid lights, we do not guarantee off brand fitment.
9. Our winch mount is designed for Warn and Superwinch products. We do not guarantee off-brand fitment.

# USE & RISK

Bodyguard Products LLC is not responsible for damage to our products, or other subsequent damage that might occur because of misuse or improper installation. While we do manufacture products that appear stronger than factory parts, our products should not be viewed or relied upon as life-saving devices in the event of a collision or rollover. We make no claims relating to airbag compatibility, crashworthiness, or sturdiness. It is the customer's responsibility to check with the vehicle manufacturer or auto dealer regarding airbag compatibility and automobile manufacturer's warranty before installing our products.

# FINISHING UP

- Install shackles.
- Confirm that all hardware is tightened, and everything is secure.
- Secure wiring harnesses for lights and sensors.
- Test all lighting and wiring before using vehicle (fog lights, sensors, etc.).

# MAINTENANCE

- Periodically check that all hardware is tightened and that all wiring and connections are secure.
- Periodically check that all sensor plugs are secure.
- Routinely wash bumper to maintain the powder coat finish.

# FEEDBACK

We'd love to hear from you!

Please send your pictures, testimonials, comments, or suggestions to us by email at [info@bodyguardbumpers.com](mailto:info@bodyguardbumpers.com). We frequently use customer pictures for brochures and marketing materials, and we always welcome customer feedback to ensure quality improvements within our company. Thanks for your purchase; we appreciate your business very much!

Where **STRENGTH** Meets *Style!*™



@BodyguardBumpers