

## INSTRUCTIONS—INSTRUCCIONES—CONSIGNES

APPLICATION: 2005–UP TOYOTA TACOMA  
APP PART # 46-21605, 40-91605, 45-91600  
MAX WINCH TRAY/WINCH MOUNTED GRILLE GUARD

ITEM	QUANTITY	DESCRIPTION	TOOLS NEEDED
1	1	WINCH TRAY	18MM SOCKET
2,3	2	LOWER MOUNTING BRACKETS (2) DRIVERS SIDE, (3) PASSENGER SIDE	18MM WRENCH
4,5	2	FRAME REINFORCEMENT BRACKETS (4) DRIVERS SIDE, (5) PASSENGER SIDE	16MM SOCKET
6,7	2	SUPPORT STRAPS (6) DRIVERS SIDE, (7) PASSENGER SIDE	16MM WRENCH
8	8	M10 HEX HEAD BOLTS (LONG)	RATCHET
9	8	M10 LOCK WASHERS	TORQUE WRENCH
10	8	M10 THICK FLAT WASHERS	8MM ALLEN WRENCH
11	8	M10 FLAT WASHERS	6MM ALLEN WRENCH
12	8	M10 HEX NUTS	3MM ALLEN WRENCH
13	2	M12 COARSE THREAD HEX HEAD BOLTS (LONG)	12MM SOCKET
14	2	M12 THICK FLAT WASHERS	17MM SOCKET
15	2	M12 COARSE THREAD HEX HEAD BOLTS (SHORT)	
16	8	M12 FLAT WASHERS	
17	6	M12 LOCK WASHERS	
18	4	M12 HEX NUTS	
19	2	M12 FINE THREAD HEX HEAD BOLTS (SHORT)	
20	6	M12 X 35MM BUTTON HEAD BOLTS (BLACK ZINC)	
21	12	M12 FLAT WASHERS (BLACK ZINC)	
22	6	M12 LOCK WASHERS (BLACK ZINC)	
23	6	M12 HEX NUT (BLACK ZINC)	
24	4	M12 X 35MM BUTTON HEAD BOLTS ( FOR 40-91605 & 45-91600 GRILLE GUARD)	
25	8	M12 FLAT WASHERS ( FOR 40-91605 & 45-91600 GRILLE GUARD)	
26	4	M12 LOCK WASHERS ( FOR 40-91605 & 45-91600 GRILLE GUARD)	
27	4	M12 HEX NUTS ( FOR 40-91605 & 45-91600 GRILLE GUARD)	
28	2	M10 X 30MM BUTTON HEAD BOLTS ( FOR 40-91605 & 45-91600 GRILLE GUARD)	
29	2	M10 LOCK WASHERS ( FOR 40-91605 & 45-91600 GRILLE GUARD)	
30	4	M10 FLAT WASHERS ( FOR 40-91605 & 45-91600 GRILLE GUARD)	
31	2	M10 HEX NUTS ( FOR 40-91605 & 45-91600 GRILLE GUARD)	

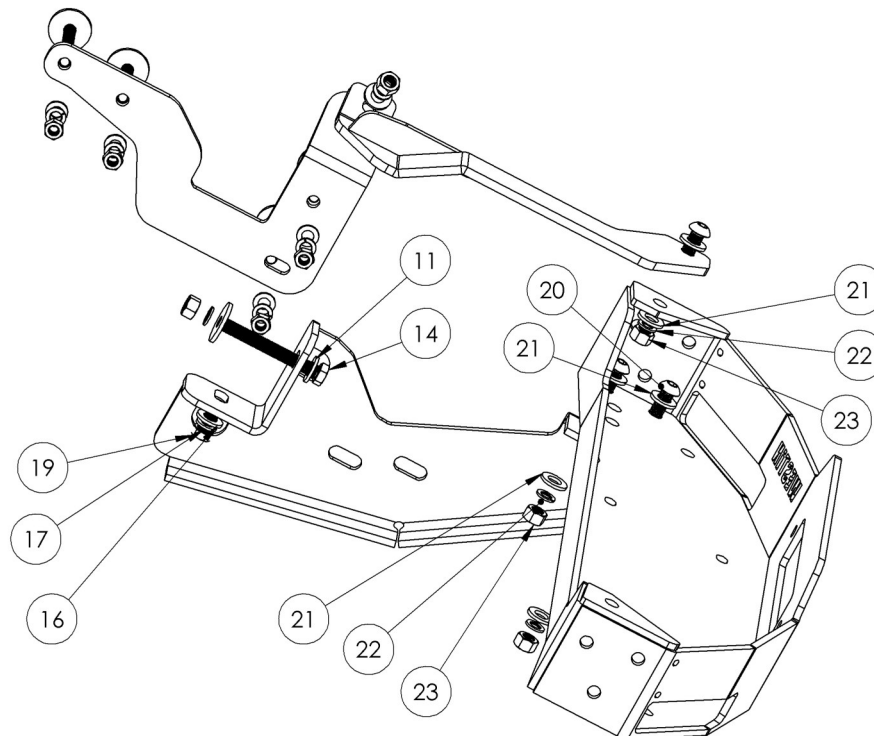
### ANTI-SEIZE LUBRICANT MUST BE USED ON ALL STAINLESS STEEL FASTENERS TO PREVENT THREAD DAMAGE AND GALLING

1. Remove contents from box, verify if all parts listed are present and free from damage. Carefully read and understand all instructions before attempting installation.
2. Starting from underneath the vehicle, remove the factory skid plate and set aside (Figure 1).
3. From the drivers side locate the factory bolt in the bottom of the frame and remove it (Figure 2). Take the drivers side lower mounting bracket and attach it to the factory bolt location using (1) M12 fine thread bolt, (1) M12 lock washer, and (1) M12 flat washer. To attach the bracket to the upper mounting hole, take (1) M12 long hex head bolt, and (1) M12 flat washer; place them through the bracket, and through the back of the frame. Attach using (1) M12 thick flat washer, (1) M12 lock washer, and (1) M12 hex nut. Do not fully tighten at this time. NOTE: The M12 thick flat washers are used on the frame side. For 2012+ vehicles the bracket will rub on the bottom of the plastic valance (Figure 3).

4. Repeat step 3 for the passenger side. NOTE: If the vehicle is equipped with factory tow hooks they must be removed and discarded to accomplish this.
5. Starting at the drivers side take the frame reinforcement bracket and align it with the existing holes on the inside of the frame. NOTE: the radiator may have to be loosened to allow proper clearance to locate the bracket, once in place the radiator may be re-tightened. Loosely attach the frame reinforcement bracket using (4) M10 long hex head bolts, (4) M10 flat washers, (4) M10 thick flat washers, (4) M12 lock washers, and (4) M12 hex nuts. NOTE: The M10 thick flat washers are used on the frame side. Repeat step for passenger side (Figure 4).
6. Take the winch tray and place it on top of the previously installed mounting brackets; attach to the brackets using (4) M12 button head bolts, (8) M12 flat washers, (4) M12 lock washers, (4) M12 hex nuts. Attach the winch tray to the previously installed support straps using (2) M12 button head bolts ( black zinc), (2) M12 flat washers (black zinc), (2) M12 flat washers, (2) M12 lock washers, and (2) M12 hex nuts. Do not fully tighten at this time (Figure 5).
7. Locate the drivers side support strap and attach it to the previously installed reinforcement bracket by placing it through the grille opening, attach using (1) M12 x 40mm hex head bolt, (2) M12 flat washer, (1) M12 lock washer and (1) M12 hex nut. Do not fully tighten at this time. Repeat this step for passenger side (Figure 6). NOTE: It is possible to slip the support strap brackets in from the backside of the grille opening. This prevents forcing them through the front and potentially damaging the plastic.
8. Align and adjust winch tray as needed, then tighten all hardware at this time, M12 hardware to 50-55 ft-lbs, M10 to 35-40ft-lbs.
9. Re-install the factory skid plate using the factory hardware.
10. Mount the winch according to the winch manufacturer's instructions. NOTE: it may be necessary to install the winch prior to installing the winch mounted grille guard.
11. To mount the optional winch mounted grille guard, locate the grille guard and align it to the outsides of the winch tray, attach to the lower mounting brackets using (4) M12 hex head bolts, (8) M12 flat washers, (4) M12 lock washers, and (4) M12 hex nuts. Attach the grill guard to the winch tray using (2) M10 button head bolts, (4) M10 flat washers, (2) M10 lock washers, and (2) M10 hex nuts. Do not fully tighten at this time.
12. Align and adjust grille guard as needed, then tighten all hardware at this time, M12 hardware to 50-55 ft-lbs, and M10 to 35-40 ft-lbs.

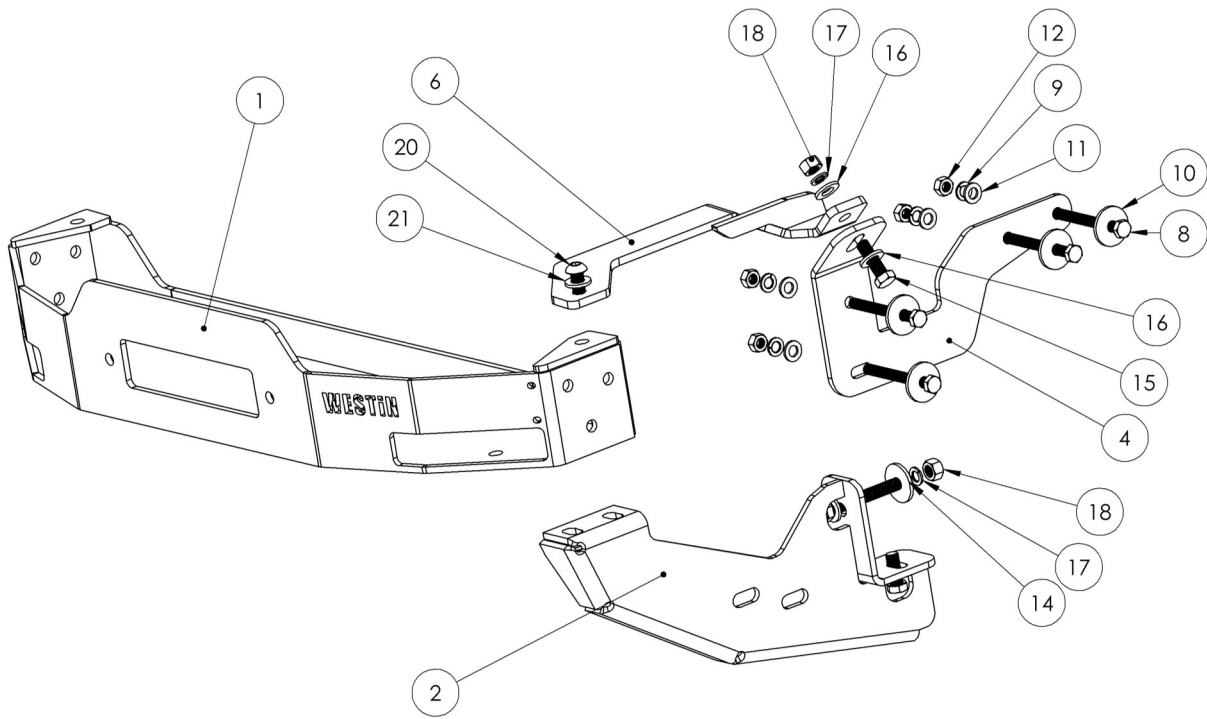
#### CARE INSTRUCTIONS

- REGULAR WAXING IS RECOMMENDED. DO NOT USE ANY TYPE OF POLISH OR WAX THAT MAY CONTAIN ABRASIVES.
- STAINLESS STEEL PRODUCTS CAN BE CLEANED WITH MILD SOAP AND WATER. STAINLESS STEEL POLISH SHOULD BE USED TO POLISH SMALL SCRATCHES.
- GLOSS BLACK FINISHES SHOULD BE CLEANED WITH MILD SOAP AND WATER.



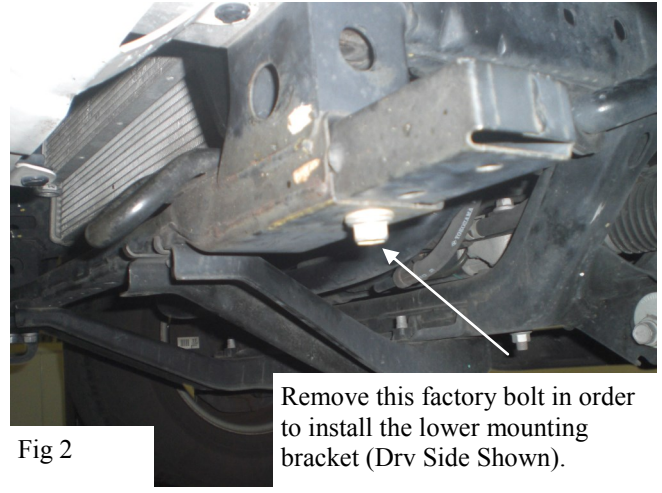
Westin Automotive Products, Inc.  
320 W. Covina Blvd.  
San Dimas, Ca 91773

Thank You for choosing Westin products  
For Additional installation assistance please call  
Customer service (800) 793-7846  
[www.westinautomotive.com](http://www.westinautomotive.com)



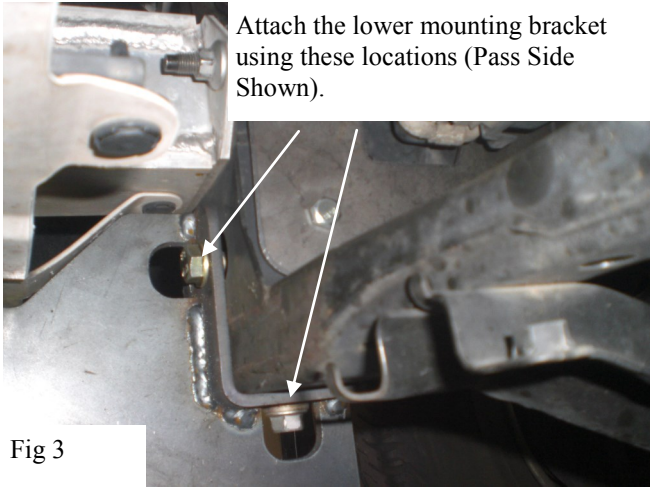
Remove the factory skidplate.

Fig 1



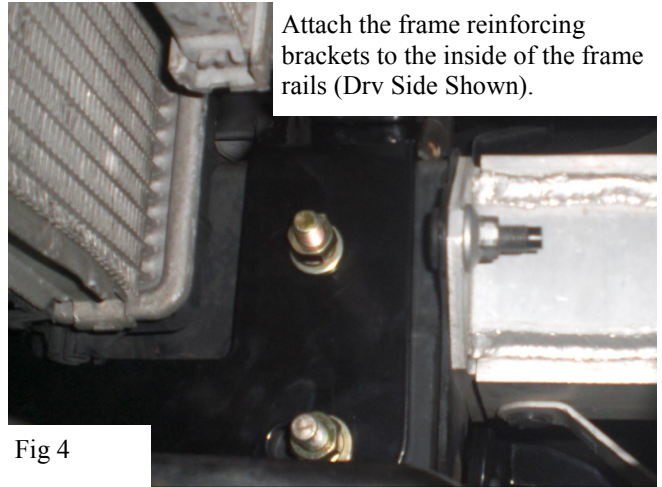
Remove this factory bolt in order to install the lower mounting bracket (Drv Side Shown).

Fig 2



Attach the lower mounting bracket using these locations (Pass Side Shown).

Fig 3



Attach the frame reinforcing brackets to the inside of the frame rails (Drv Side Shown).

Fig 4

**Westin.** Westin Automotive Products, Inc.  
 320 W. Covina Blvd.  
 San Dimas, Ca 91773  
 SIGNATURE OF QUALITY

9/25/2013 P.N.: 75-0063-Rev B W13-0078

Thank You for choosing Westin products  
 For Additional installation assistance please call  
 Customer service (800) 793-7846  
 www.westinautomotive.com



Fig 5

Attach the winch tray to the lower mounting brackets using M12 button head hardware.

Attach the support strap at these locations using M12 hardware (Pass Side Shown).

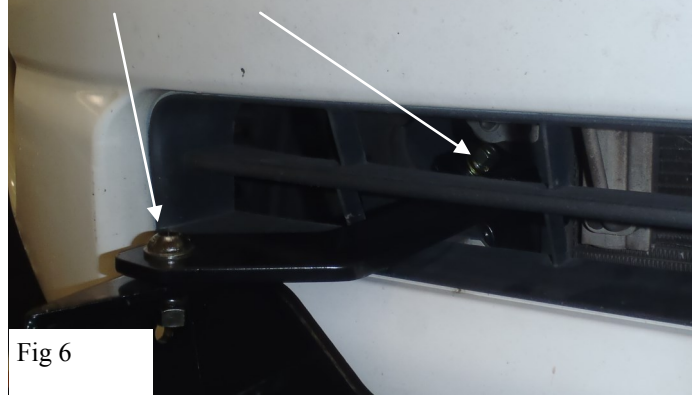


Fig 6



Installation complete on 2005 vehicle (shown with 40-91605 Grille Guard, 46-3005 Tow Hooks, and 46-70070 Faceplate).



Installation complete on 2014 vehicle (shown without optional accessories).

**Westin.**  
SIGNATURE OF QUALITY

Westin Automotive Products, Inc.  
320 W. Covina Blvd.  
San Dimas, Ca 91773

Thank You for choosing Westin products  
For Additional installation assistance please call  
Customer service (800) 793-7846  
[www.westinautomotive.com](http://www.westinautomotive.com)