



“The World’s First Tuned air Intake System!”
Factory safe air/fuel ratio’s for Optimum performance
Injens tuning process covered by three U.S. Patents

Part number PF5012
2005-2009
Jeep Grand Cherokee WK
4.7L V8

- 1- MR Tech Power-Flow intake system (SR)
- 1- Web **Nano/fiber** dry filter (#1021)
- 1- 3-1/8” straight hose (#3054)
- 1- Rubber grommet (#8002)
- 2- Power-band (.048) (#4004)
- 1- Vibra mount M6 (#6020)
- 1- Fender washer M6 (#6010)
- 1- Nut M6 (#6002)

1- 4 page installation instructions.

Note: The C.A.R.B. Exempt sticker must be attached under the hood in a manner such that it is easily viewed by an emissions inspector.

Congratulations! You have just purchased the best engineered, dyno-proven cold air intake system available.

Please check the contents of this box immediately.

Report any defective or missing parts to the Authorized Injen Technology dealer you purchased this product from.

Before installing any parts of this system, please read the instructions thoroughly. If you have any questions regarding installation please contact the dealer you purchased this product from.

Installation DOES require some mechanical skills. A qualified mechanic is always recommended.

*Do not attempt to install the intake system while the engine is hot.

The installation may require removal of radiator fluid line that may be hot.

Injen Technology offers a limited lifetime warranty to the original purchaser against defects in materials and workmanship. Warranty claims must be handled through the dealer from which the item was purchased.

Injen Technology 244 Pioneer Place Pomona, CA 91768 USA

Please check the contents of this box immediately.

Note: This intake system was Dyno-tested with an Injen filter and Injen parts. The use of any other filter or part will void the warranty and CARB exemption number.

Parts and accessories are available on line at “Injenonline.com”



Warning: Manufactures attempting to duplicate Injen’s patented process will now face legal action.

MR Technology Step down process:

- 1- Calibration Method for Air Intake Tracts for Internal Combustion Engines. Covered under Patent# 7,359,795
- 2- Calibration Device for Air Intake Tracts for Internal Combustion Engines. Published and patent pending
- 3- Calibration Method and Device for Air Intake Tracts having Air Fusion Inserts Published and patent pending

Note: Injen strongly recommends that this system be installed by a professional mechanic.





Figure 3
Stock air intake box and air intake duct shown above.

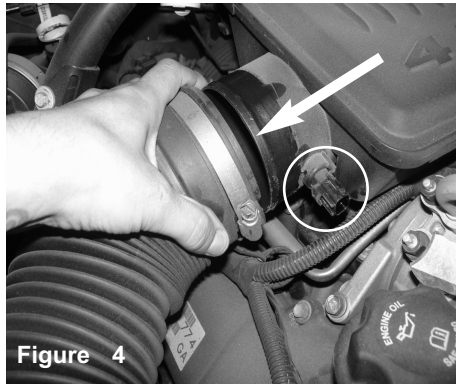


Figure 4
Loosen the clamp on the resonator box using 8mm nut driver. Pull back. Disconnect the Temp harness located on the resonator box.

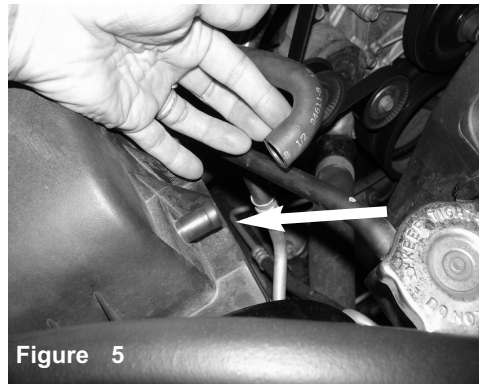


Figure 5
Pull back the crank case line from the air box.

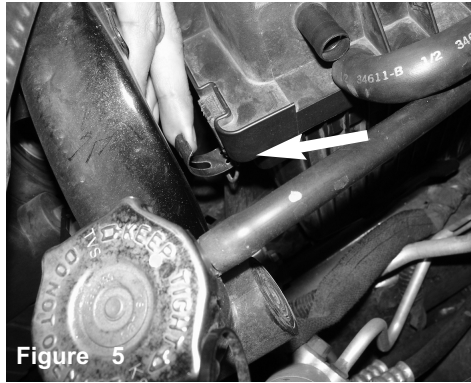


Figure 5
Un-clip the upper half of the air box.

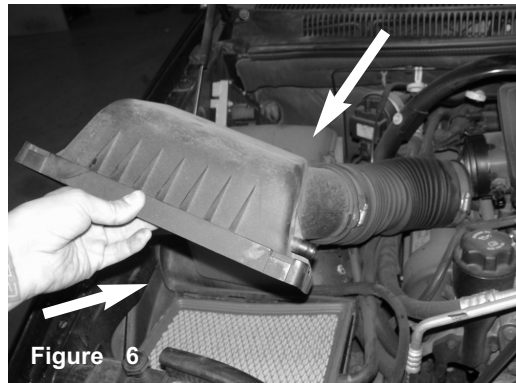


Figure 6
Lift up and pull the upper half of the air box assembly. Remove the air filter also. Stock bottom half of air box will be left in for the new intake install.

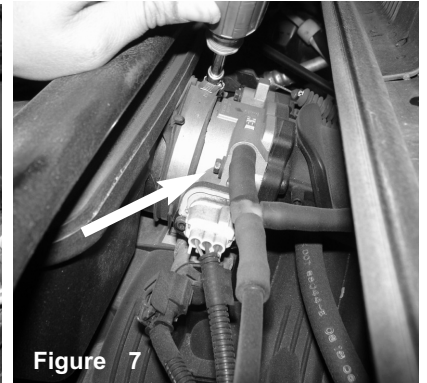


Figure 7
Loosen the clamp on the throttle body.

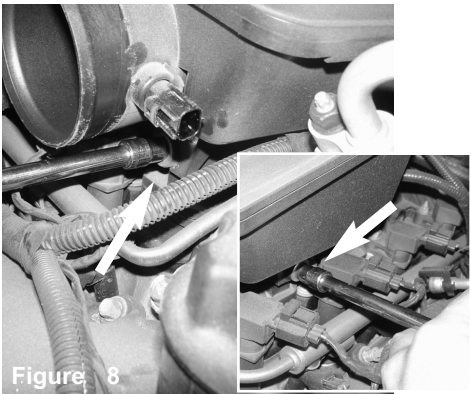


Figure 8
Loosen the 2 bolts holding in the resonator using 10mm socket and ratchet.

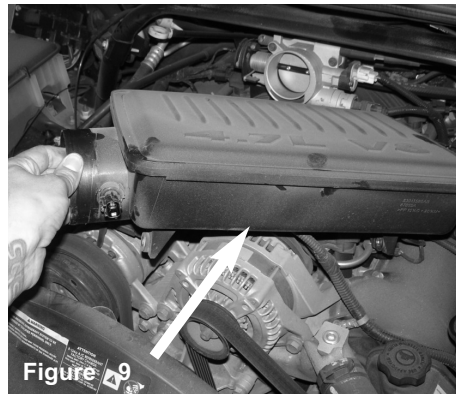


Figure 9
Lift up and pull the air box resonator out of vehicle.



Figure 10
Turn the temp sensor, and pull back from the resonator and remove.



Figure 11
Install the provided grommet into the hole that is on the intake tube.

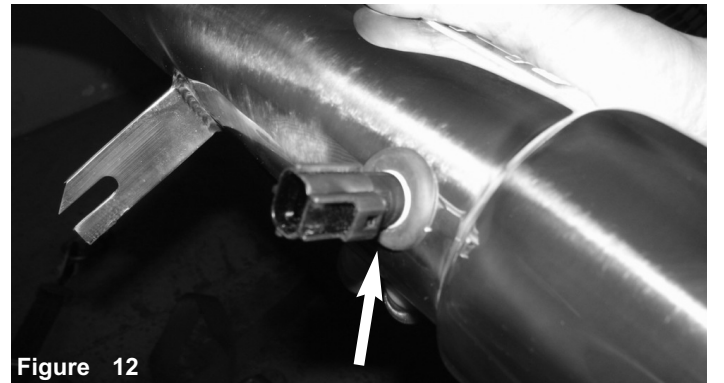


Figure 12
Install the temperature sensor into the grommet and secure.

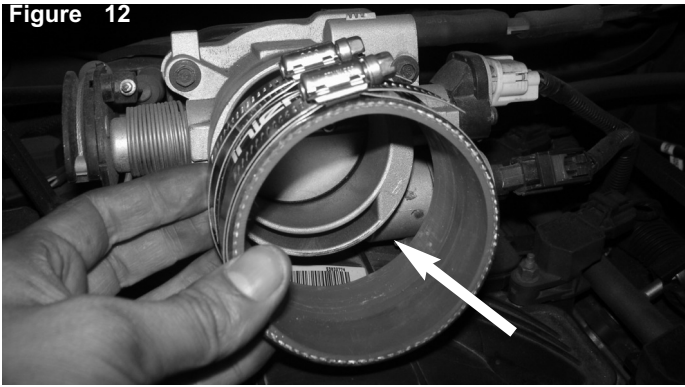


Figure 12
With clamps provided, install the straight hose with clamps provided to the throttle body.



Figure 13
Tighten the clamp on the throttle body only.

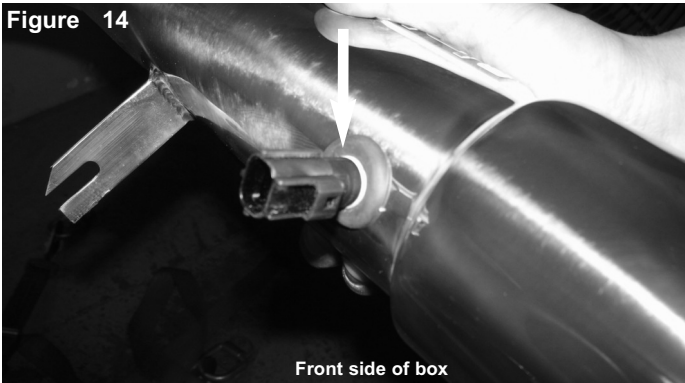


Figure 14
Temperature sensor should sit nice and secure in the grommet, shown above.

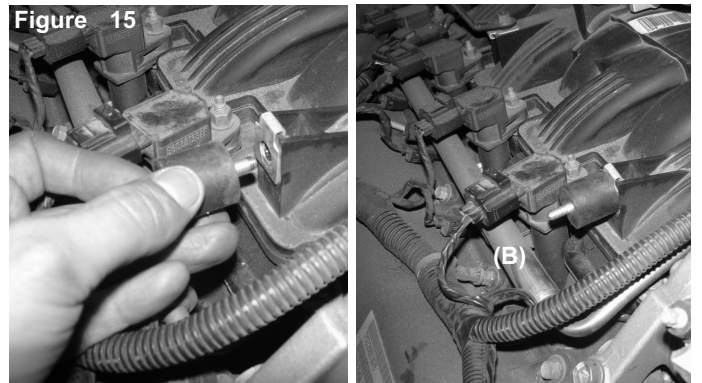


Figure 15
A) Install the provided M6 vibra mount to the threaded insert located on the intake manifold.
B) Secure and tighten the M6 vibra mount.

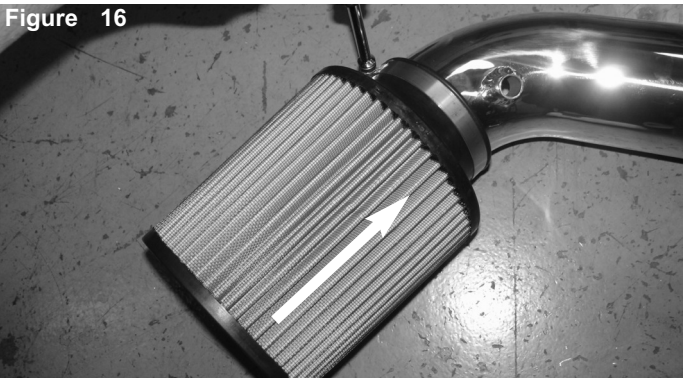


Figure 16
Install the filter to the intake tube and tighten using 8mm nut driver.



Figure 17
Install the intake tube into the vehicle and position to the throttle body and the bracket to the vibra mount.

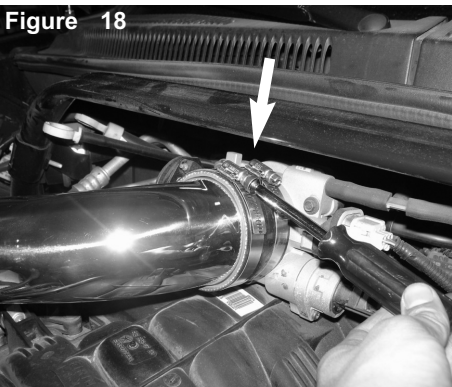


Figure 18
Now tighten the clamp using 8mm nut driver.



Figure 19
Secure the bracket using provided M6 nut and fender washer.

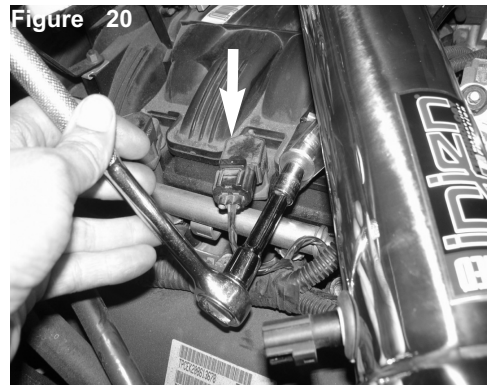


Figure 20
Tighten the vibramount using 10mm socket or ratchet.



Connect the temp sensor harness.



Connect the crank case line to the fitting on the intake tube.



Check position and re-adjust if necessary.



Congratulations! You have just completed the installation of this intake system. Periodically, check the alignment of the intake, normal wear and tear can cause nuts and bolts to come loose. **Note: Check clearance and adjust if needed!** **Failure to check the alignment and adjust the intake can cause damage that will void the warranty. Injen Technology is not responsible for any damages caused by/from improper installation.**

1. Upon completion of the installation, reconnect the negative battery terminal before you start the engine.
2. Align the entire intake system for the best possible fit. Once the intake has been properly fitted continue to tighten all nuts, bolts and clamps.
3. Periodically, recheck the alignment of the intake system and make sure there is proper clearance around and along the length of the intake. Failure to follow proper maintenance procedures may cause damage to the intake and will void the warranty.
4. Start the engine and listen carefully for any odd noises, rattles and/or air leaks prior to taking it for a test drive. If any problems arise go back and check the vacuum lines, hoses and clamps that maybe causing leaks or rattles and correct the problem.
5. Check the filter for excessive dirt build up. Clean or replace the filter with an original Injen filter (can be bought on-line at "injenonline.com"). Congratulations! You have just completed the installation of the best intake system sold on the market. Enjoy the added power and performance of your new intake system.