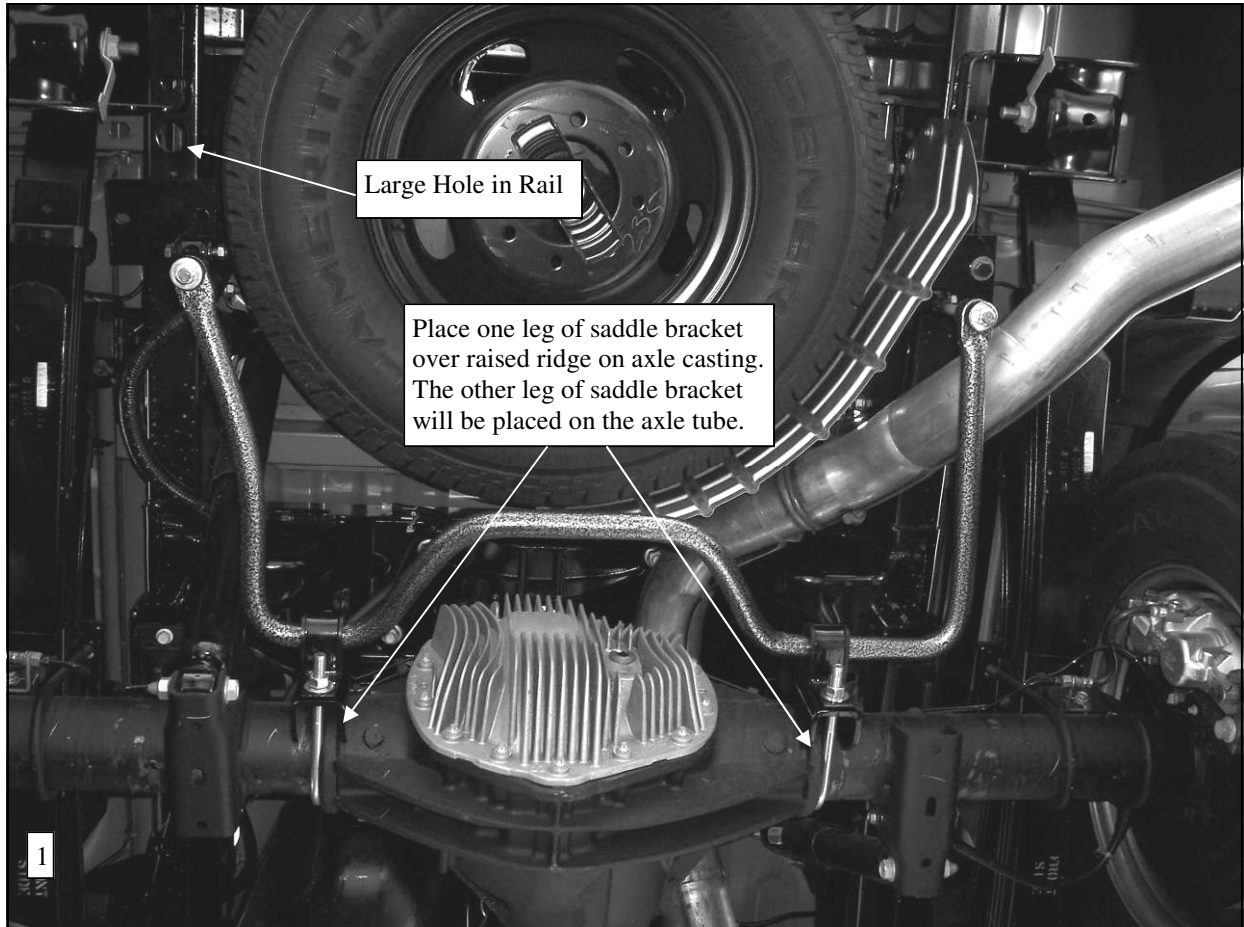


# INSTALLATION INSTRUCTIONS

## Rear Stabilizer Bar

Thank you for purchasing a quality Hellwig Product.

PLEASE READ THIS INSTRUCTION SHEET COMPLETELY BEFORE STARTING YOUR INSTALLATION

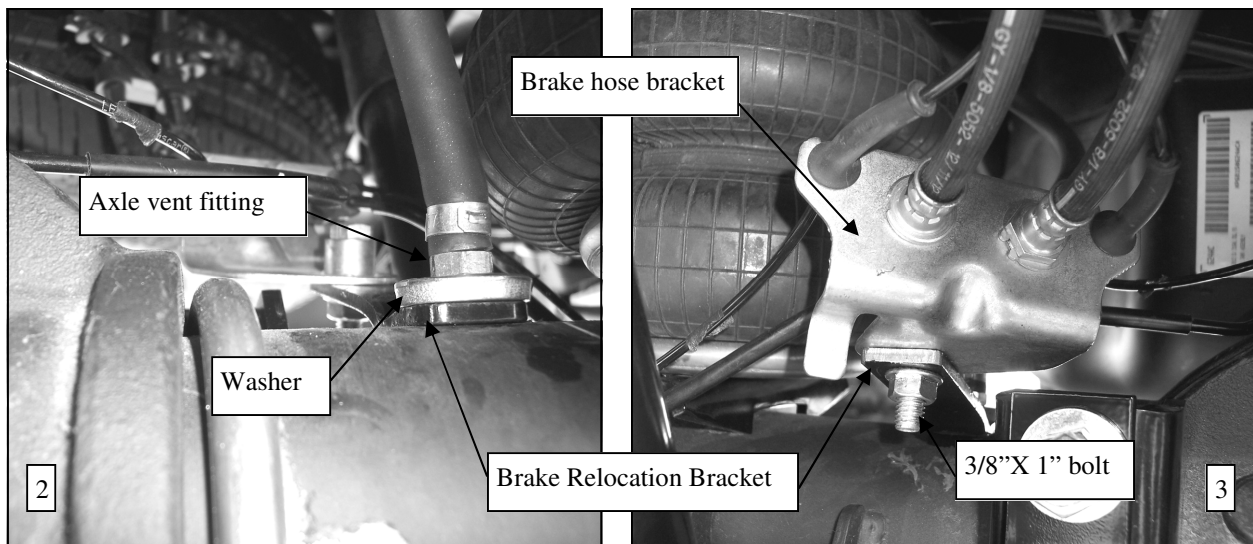


**SAFETY: BEFORE STARTING YOUR INSTALLATION, BE SURE TO SET THE PARKING BRAKE AND CHOCK THE TIRES.**

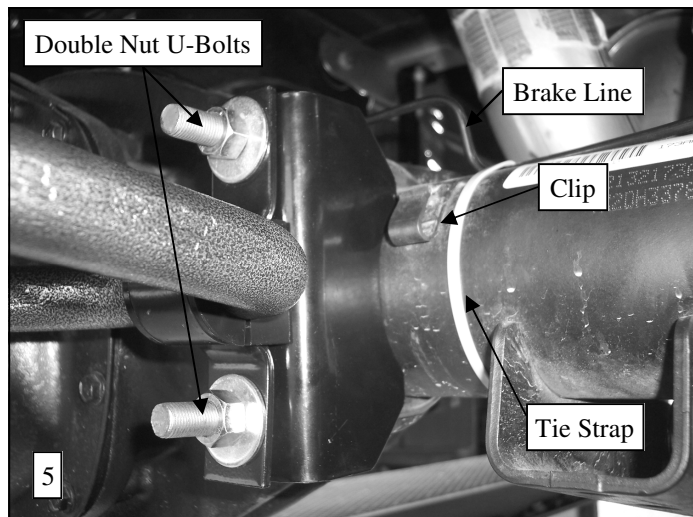
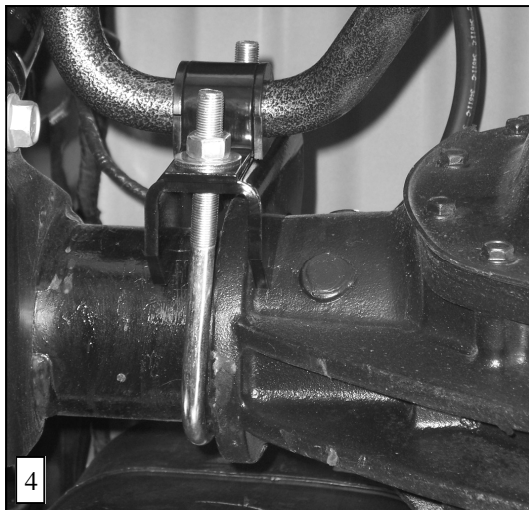
**NOTE: TO EASE INSTALLATION AND TO PROPERLY ADJUST THE BAR, THE WEIGHT OF THE VEHICLE MUST BE ON THE SUSPENSION, AS IF DRIVING DOWN THE ROAD. DO NOT RAISE THE VEHICLE BY THE FRAME.**

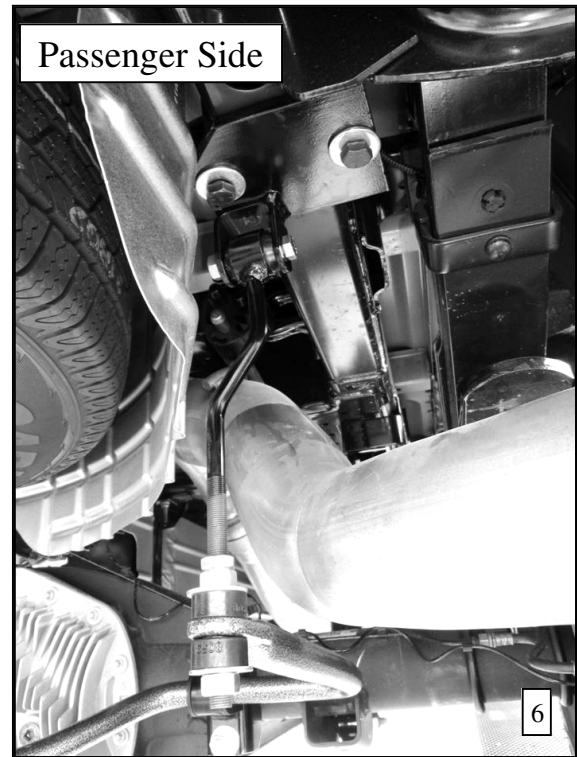
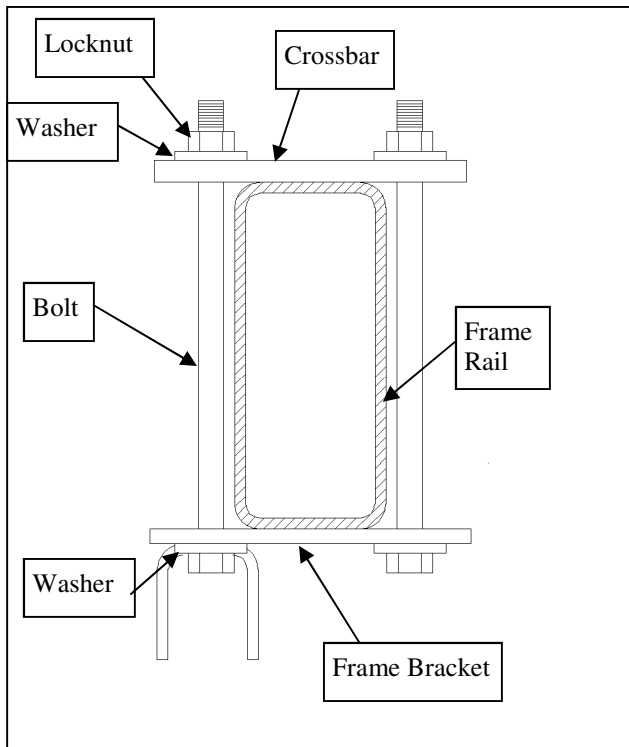
**NOTE: THIS UNIT IS DESIGNED TO MOUNT TO THE REAR OF THE AXLE TUBES WITH THE ARMS OF THE BAR TOWARD THE REAR OF THE VEHICLE. THE HUMP SHOULD TILT SLIGHTLY DOWNWARD.**

**NOTE: THIS KIT INCLUDES LOCK NUTS WHICH REQUIRE TIGHTENING WITH A WRENCH AFTER BEING STARTED BY HAND.**

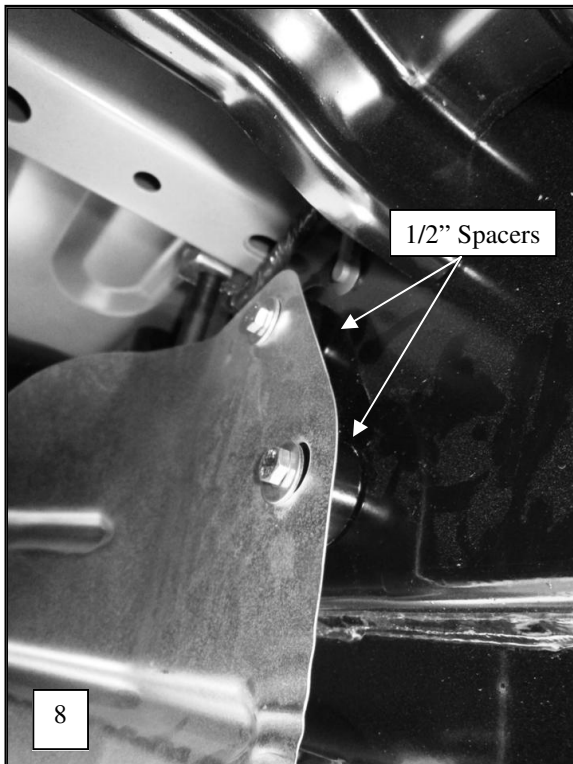


1. Locate threaded vent hose fitting attached to axle and remove threaded fitting to separate the brake hose bracket from the axle.
2. Gently flex brake lines to move brake hose bracket rearward.
3. Reattach axle vent tube fitting as shown in photo 2 with thick washer and brake relocation bracket. Torque to 15-20 ft-lb
4. Reattach brake hose mounting bracket to relocation bracket as shown in photo 3 using 3/8 x 1" bolt. Torque to 15-20 ft-lb.
5. As shown in photo 1, lubricate the inside and place D-shaped poly-bushings onto straight areas of the bar on each side of center hump. After installing D-bushings onto bar, place U-plates on D-bushings. The sway bar will be installed with the hump tilted down as shown in photo 9.
6. Place the U-bolts on the axle tubes next to casting as shown in photos 1 & 4. When installing the U-bolts, be sure to put the U-bolts under any brake lines, wires, or hoses on the axle to avoid any possible damage.
7. Before installing the saddle brackets, remove the passenger's side brake line from the clip and reposition the brake line so that it will clear the saddle bracket as shown in photo 5. Secure the brake line with a tie strap.
8. Place the saddle brackets on the axle by inserting the legs of the U-bolts into the holes in the saddle brackets. The saddle brackets must be installed so that one leg of the saddle bracket is located on the cast center section with the leg just inside the raised lip on the casting. See photos 1 & 4.
9. Raise the bar and place the D-bushings on the saddle brackets by inserting the legs of the U-bolts through the holes in the U-plates. Install the flat washers and hex nuts provided on the U-bolts. Do not use the lock-nuts on the axle U-bolts. **LEAVE LOOSE** for adjustment later.





10. Remove the two furthest back 6mm bolts holding the spare tire heat shield to the frame. Place the 1/2" spacers between the heat shield and the frame and reattach using the 6mm bolt and washer included in the kit as in Photo 8.
11. Locate frame brackets on rail as shown in photos 1 & 6. The brackets are located just forward of the large hole in the bottom of the rail as shown in photo. Attach brackets so that the clevis on the bracket is located on the forward, in-board corner.
12. Attach frame brackets to rail as shown in diagram above. **LEAVE LOOSE** for adjustment later.
13. Install the hourglass bushings and spacer tubes into the sleeves in the loops in the end links. To ease installation, lubricate the outside of the hourglass bushing first and install into loop in the end of the end link. Then lubricate the outside of the sleeve and install in bushing.
14. Place end link into clevis with offset inboard. Attach end link to clevis with 7/16 X 2 1/4" bolt and locknut.
14. Thread the jam nut and hex nut on to the threads of the end link far enough to mount the flat washers and bushings to the end of the sway bar as shown in photo 7. Attach the sway bar to the end link using the locknuts provided in kit. **LEAVE IT LOOSE** for adjustment later.
15. With the sway bar loosely mounted, work the bar back and forth in the D-shaped poly bushings to center the bar.
16. Tighten the frame bracket bolts to 50 ft-lb, the end link clevis bolts to 35 ft-lb and the axle U-bolts to 50 ft-lbs.
17. Add a second nut to the remaining length of the U-bolt legs and double nut to keep them in position.
18. Tighten the end link nuts until the poly bushings start to bulge slightly. **DO NOT OVERTIGHTEN.** Tighten the jam nut against the upper nut on the end link to lock it into place.



19. Recheck your installation, looking for clearance on any undercarriage components such as: gas lines, exhaust pipes, brake lines, wiring, differential cover, etc.
20. Drive the vehicle for a few miles. Recheck for the installation for position and tightness, readjust and re-torque as needed. Recheck the installation periodically thereafter.

**ATTENTION INSTALLER: PLEASE MAKE SURE CUSTOMER RECEIVES THIS INSTRUCTION SHEET, ALL IMPORTANT NOTE CARDS, WARNING CARDS, AND THE WARRANTY FORM.**

### **Maintenance and Inspection:**

Your Hellwig Suspension Product is built to last. However, as with all vehicle systems, it requires routine inspection. Inspect your Hellwig installation periodically looking for secure hardware, and tight fitting brackets and bushings. If you do not perform this inspection, have your professional mechanic inspect as described.