



Dodge Durango Installation Instructions  
Center Belt System  
Part Number UD1911



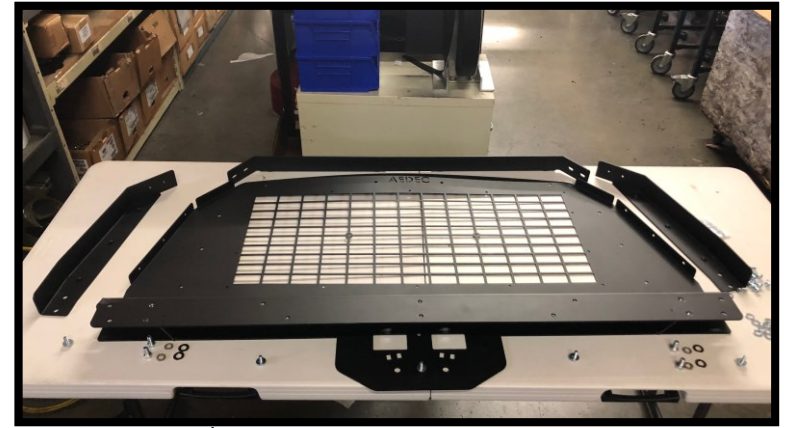
Dodge Durango Seat



Drivers side Air Bag Wing



Passenger side Air Bag Wing



Rear Screen-Mesh



Rear Close Out-Large-Driver's Side



Rear Close Out-Small-Passenger Side



3/8-16 nut, flat washer & Locking washer & 3/8-16x1-1/2 bolt



3/8-16 Nut, flat washer, locking washer, 3/8-16x1 bolt



7/16-20 Nut, locking washer, flat washer & 7/16-20x1 bolt



A Kit



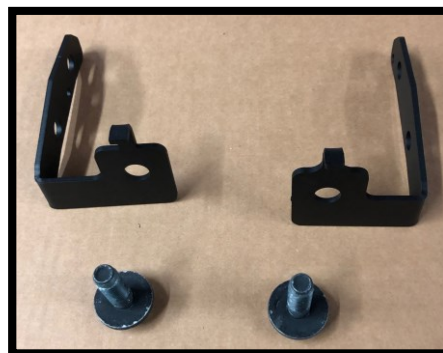
12mm x16mm Button Head Bolts with Washers



Coupling Nut



Seat Belt Magnet Kit



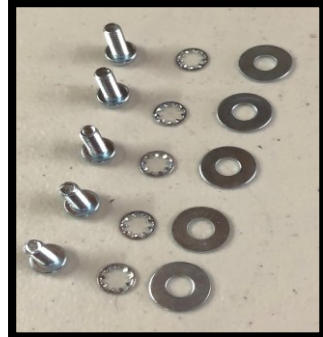
Outside Buckle Bracket



C Pillars Brackets w/ Hardware



Center Anchor bracket w/ Hardware



1/4 x 20, flat and star washer



Fender washer



Waist Buckle



Shoulder Buckle



9/16 Socket



5/8 Socket



Phillips Head Screw Driver



T27 Torx Drive



T50 Torx Drive



9/16 Wrench



8mm Hex Drive Allen Wrench

First, remove the OEM seat

Using a T50 torx, remove the buckles that are on the out-board side of the OEM seat. Set these aside as they will be reinstalled with the Aedec seat.

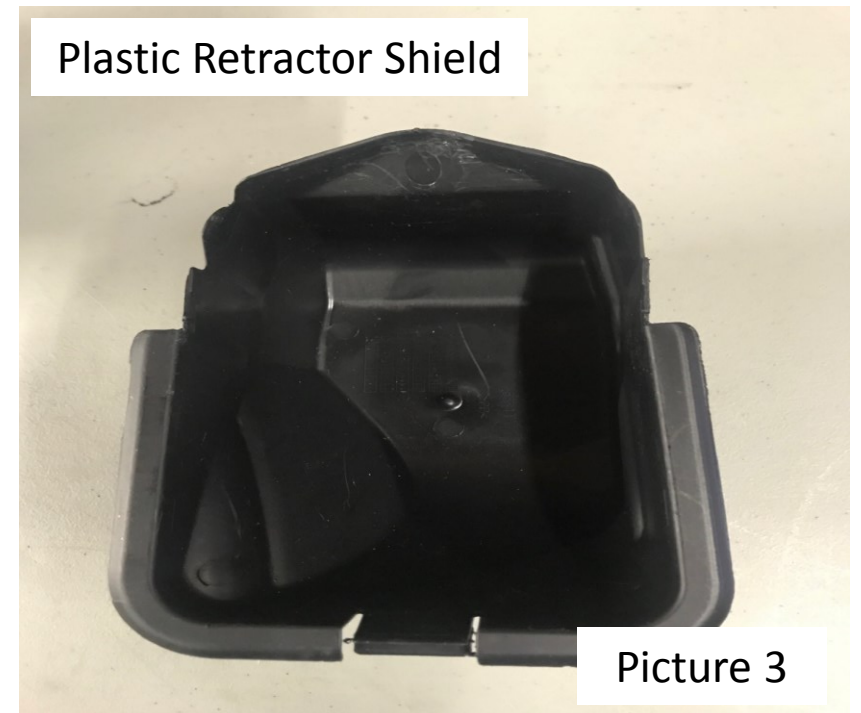
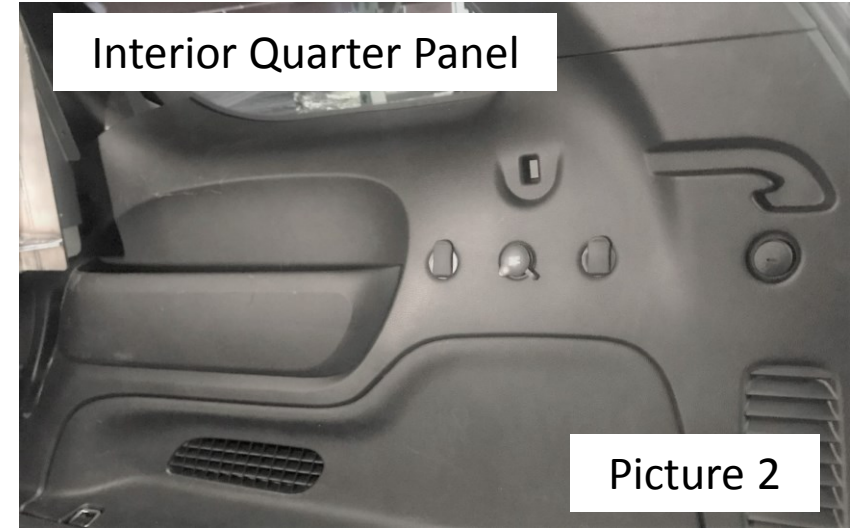
Next, remove the C Pillar Plastic Trim from both sides of the vehicle. The C Pillar Plastic Trim is shown in Picture 1.



Next remove the interior quarter panel trim on both sides of the vehicle. See Picture 2. Set the panels aside for modification prior to reinstalling.

With the interior quarter panel trim removed; now remove the shoulder hoop and retractor from both sides. Also, place these aside as they will be reinstalled with the Aedec Seat.

Now remove the plastic retractor shield. Picture 3.



Using a Utility knife; cut out the front mount for the tonneau privacy cover from the quarter panel.

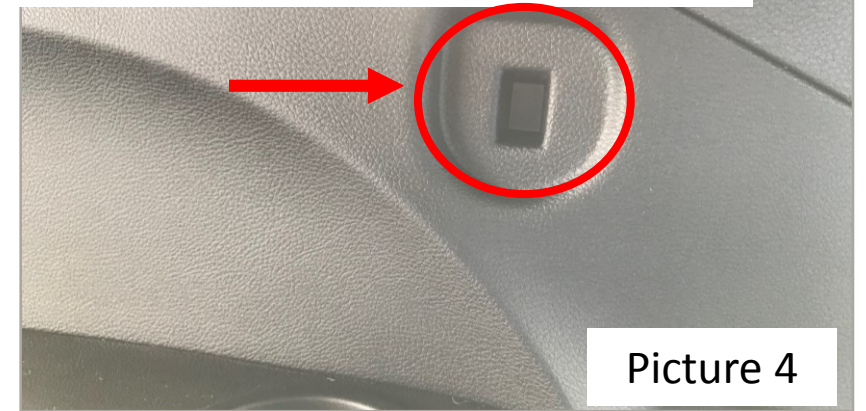
Now we can install the Cross-Member Support Bracket to the C Pillar, as seen in Picture 5

The lower portion of the bracket will go to the inside of the sheet metal where the retractor was located.

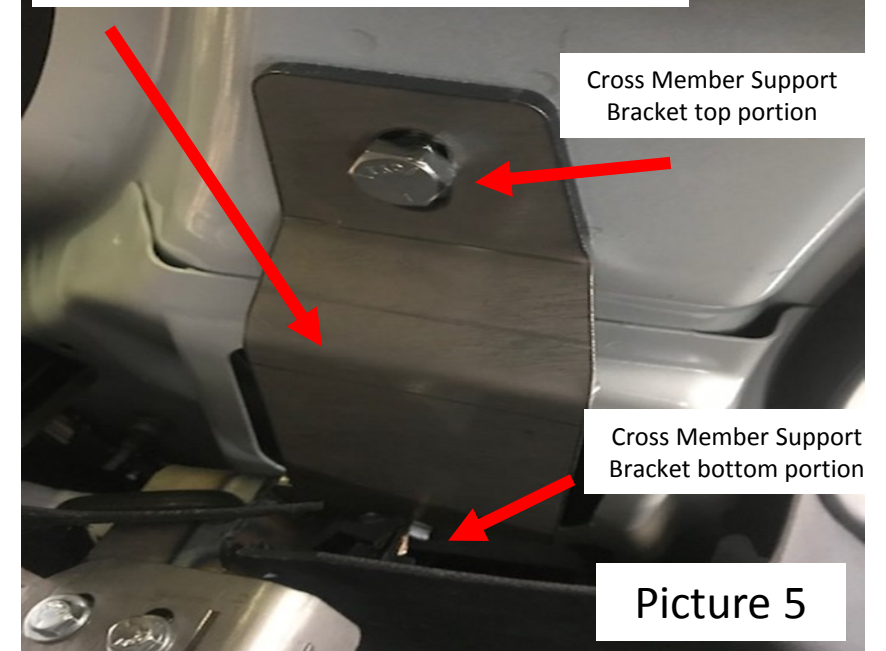
Use a 3/8-16 Hex Head Bolt, 3/8 lock washer and 3/8 flat washer to fasten this part of the bracket.

The top portion of the bracket will use the threaded insert the shoulder hoop fastened at . Use a 7/16-20 Hex Head Bolt, 7/16 lock washer and a 7/16 flat washer to fasten the top portion of the bracket. Tighten securely. Repeat for the other side

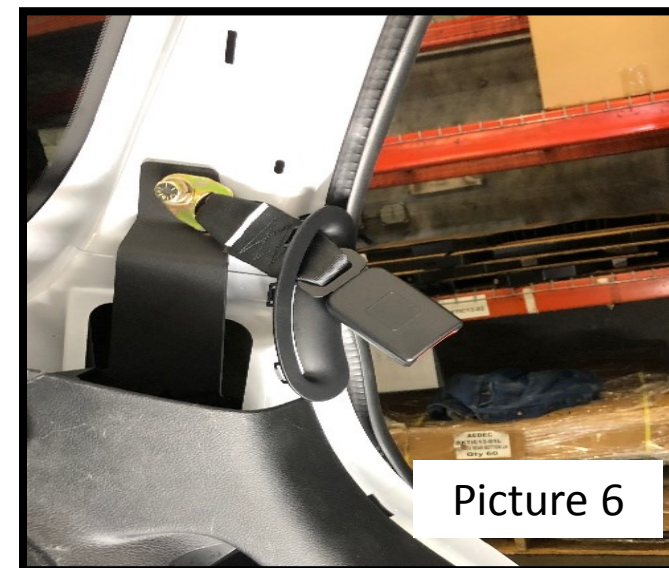
## Mount for Tonneau Privacy Cover



## Cross Member Support Bracket



Place the factory seatbelt slot onto the buckle then place a 7/16" locking washer and flat washer on a 7/16"-20 x1" bolt. Place the bolt through the hole in the metal end of the buckle, screw the bolt in the top hole of the C Pillar Bracket. As seen in picture 6.

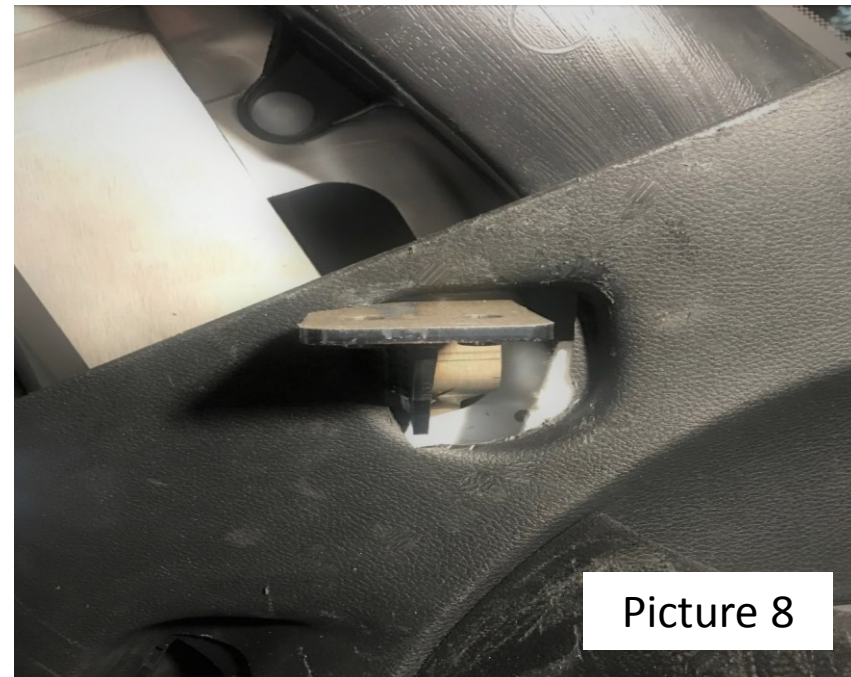


Pull Door seal out Reinstall C Pillar trim. Put the door seal back into place. See picture 7.





Now reinstall the Interior quarter panel trim. The hole you previously cut out will now slip over the lower portion of the Cross-Member Support Bracket as seen in Picture 8. Repeat for the other side; see picture 9.

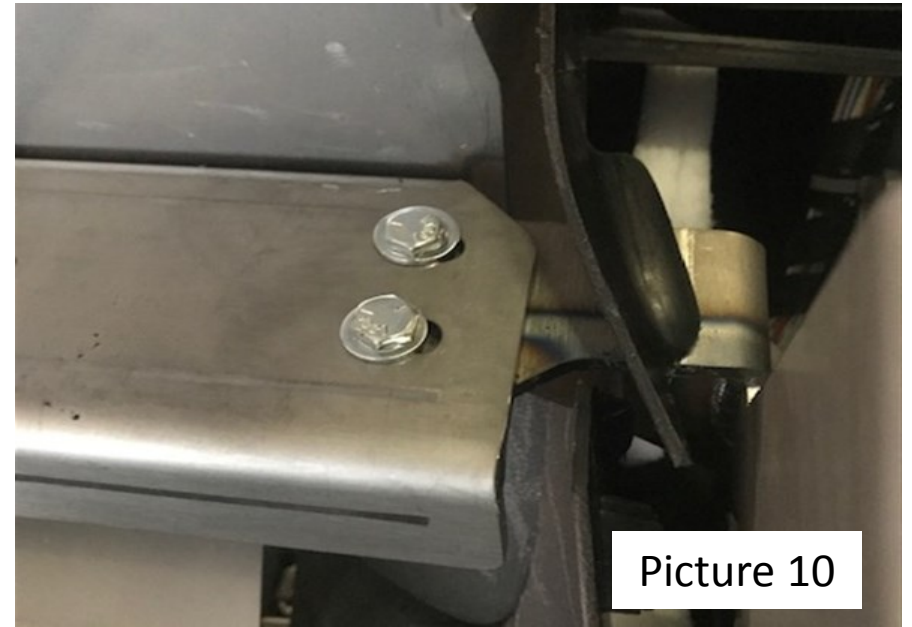


Picture 8



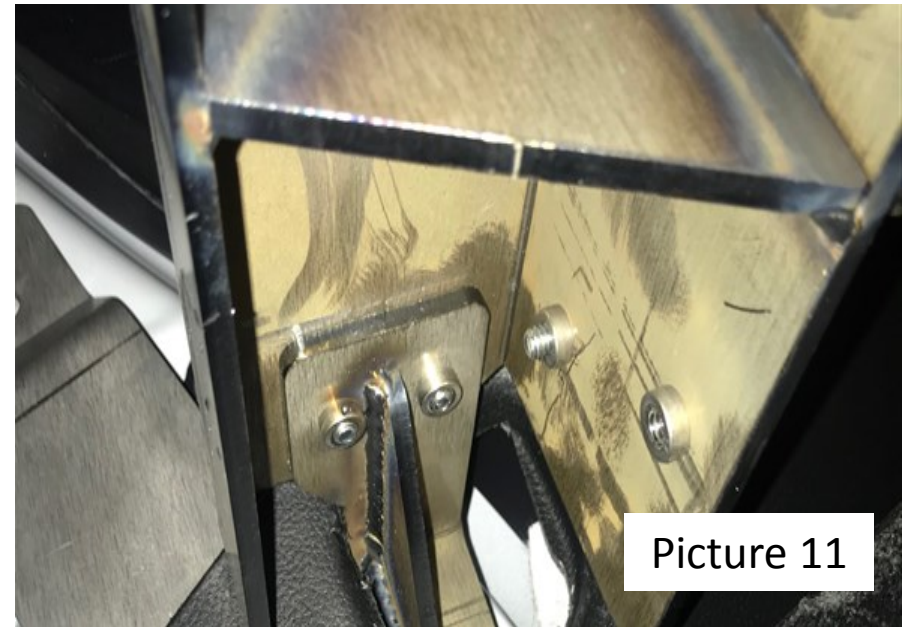
Picture 9

Now install the Cross Member with 4 ea. Of the 3/8-16x1 Hex Head Cap screws, 3/8 flat washers and 3/8-16 nut. The large dog ear on the Cross Member used to mount the Retractors should be to the front of the vehicle. Use two on each side as seen in Picture 10.



Picture 10

Picture 11 shows what the Cross Member should look like from below the Cross Member.



Picture 11

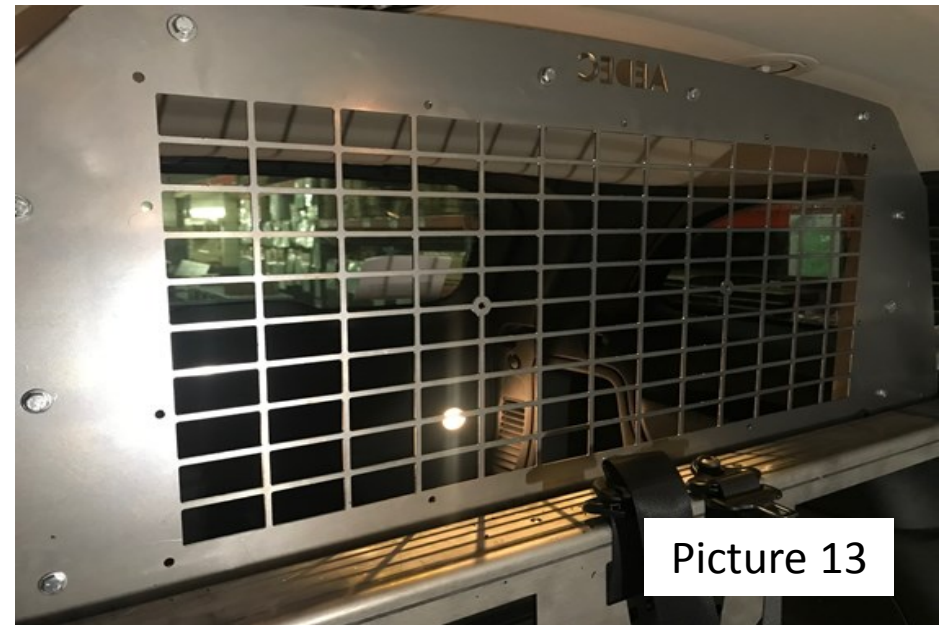
### Installing Screen (this step will require two people)

Place the Screen through the back of the vehicle. Using two people, position the screen into place and align the bottom holes of the screen with the holes in the Cross Member. Using the 1/4-20 Hex Head Cap Screws install them starting at the center hole and working out bound both directions. Do not tighten at this time.

Once all the fasteners are in place; securely tighten.

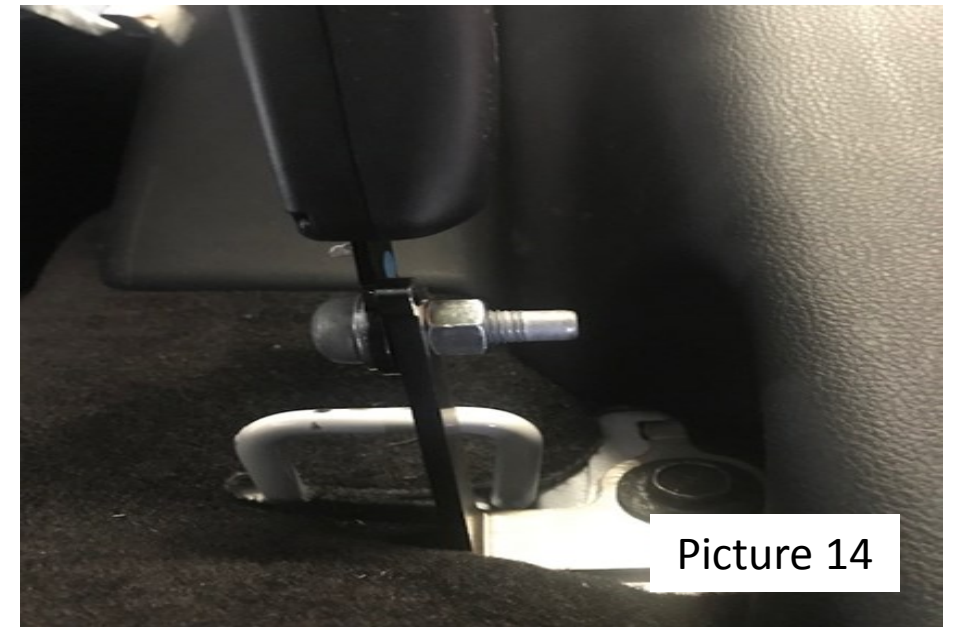


Picture 13 shows what the Screen should look like from the front once installed correctly.



## Installing Seat Belt Buckles

Next reinstall the OEM Seat Belt Buckles. First install the Aedec Seat belt buckle brackets. Note: there is a left and right bracket. The brackets are designed with a tab to fit in to the OEM hole, so they are clocked and placed in the proper position. See Pictures 14 and 15. Utilize the OEM bolt to attach the bracket to the vehicle.



Picture 14

Now attach the supplied buckles and bolts. You will need to use the supplied 7/16-20 Nylok nuts



Picture 15

## Installing Closeout

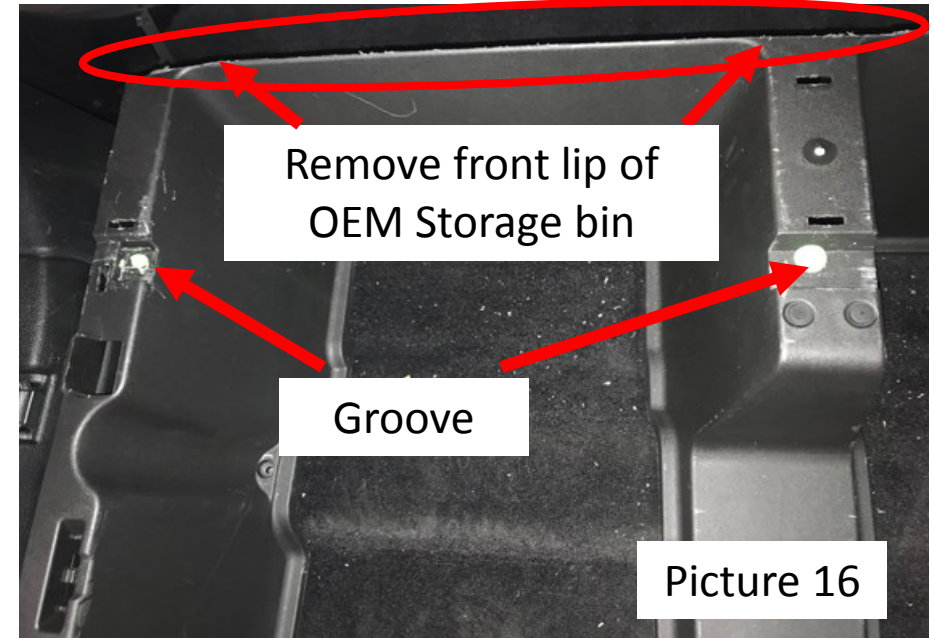
The front lip of the OEM storage will need to be removed to allow the seat to fully sit in place. Remove the false floor and cut off the front lip of the floor. Set aside. Clear the seat. The closeout panels will extend into the in the storage compartment.

Install the Large Close Out Panel on the Drivers side of the vehicle first; angle the top left of panel toward the outside to clear the screen brackets then slide the bottom into the groove of the storage unit.

Next install the Small Close Out Panel on the Passenger side; angle top to upper outside corner to clear the right screen bracket  
Start 5ea. ¼ x 20 bolts & washers  
Start 2 ea. 8-32 bolts to lock the closeout panels to gather and tighten then tighten ¼ bolts across top.

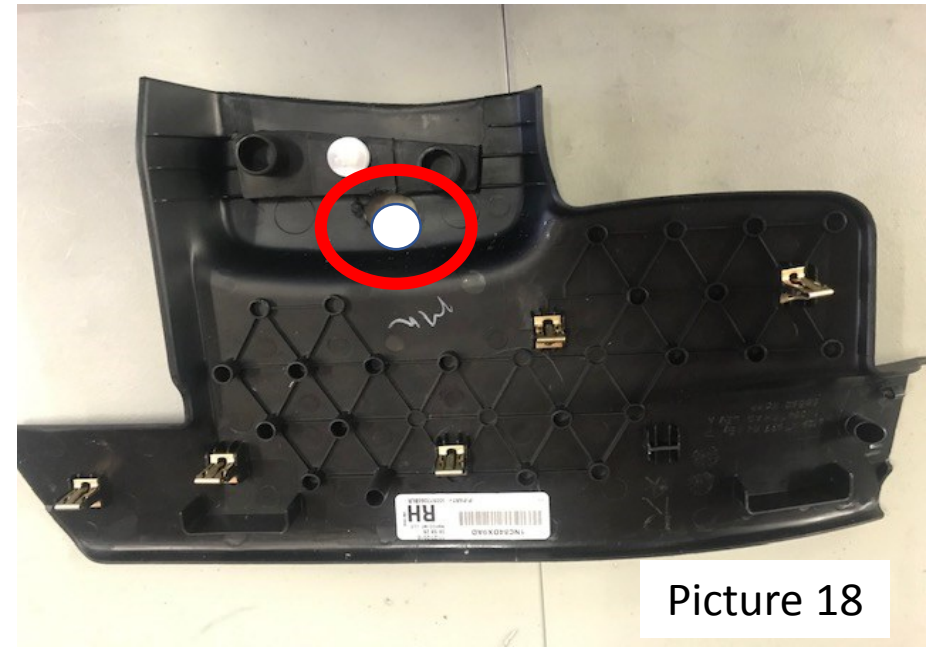
## Installing Closeout Continued

The closeout panels will rest in the in the storage compartment groove seen in Picture 17.

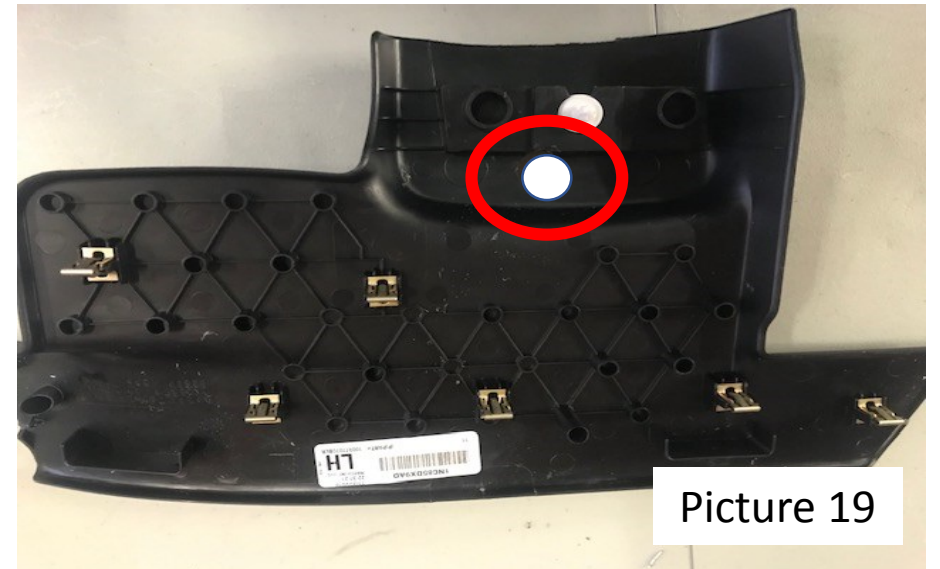


### Prepping Door Sill Trim

Remove both the right and left Door Sill Trim pieces. You will need to drill a 1" hole so the can fit on top of the Couple Nut that is to be installed next. See Pictures 18 and 19 for the correct location of the holes.



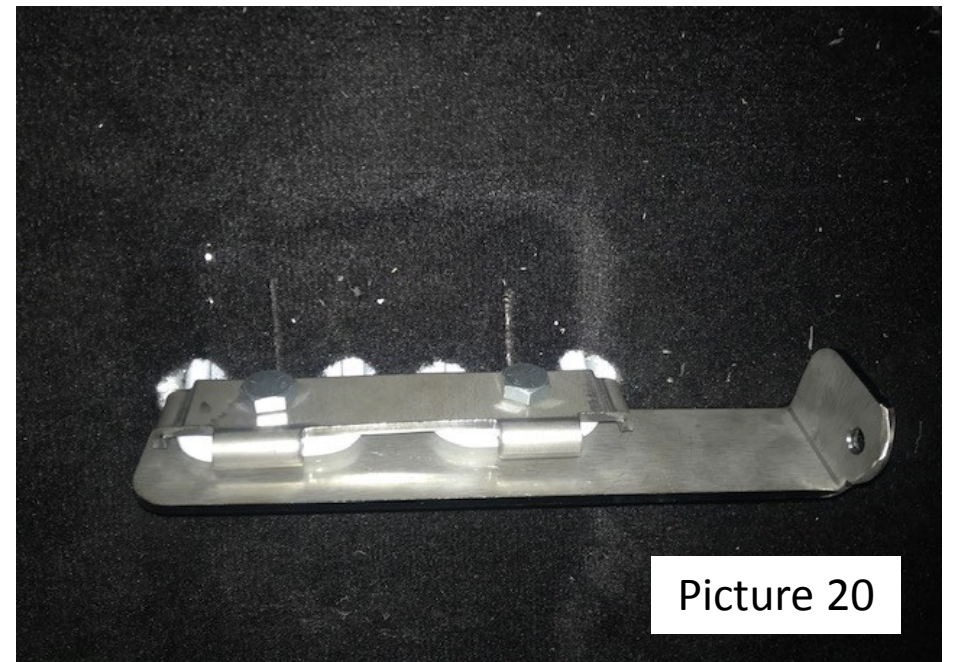
Picture 18



Picture 19

## Installing the Seat Belt Center Anchor

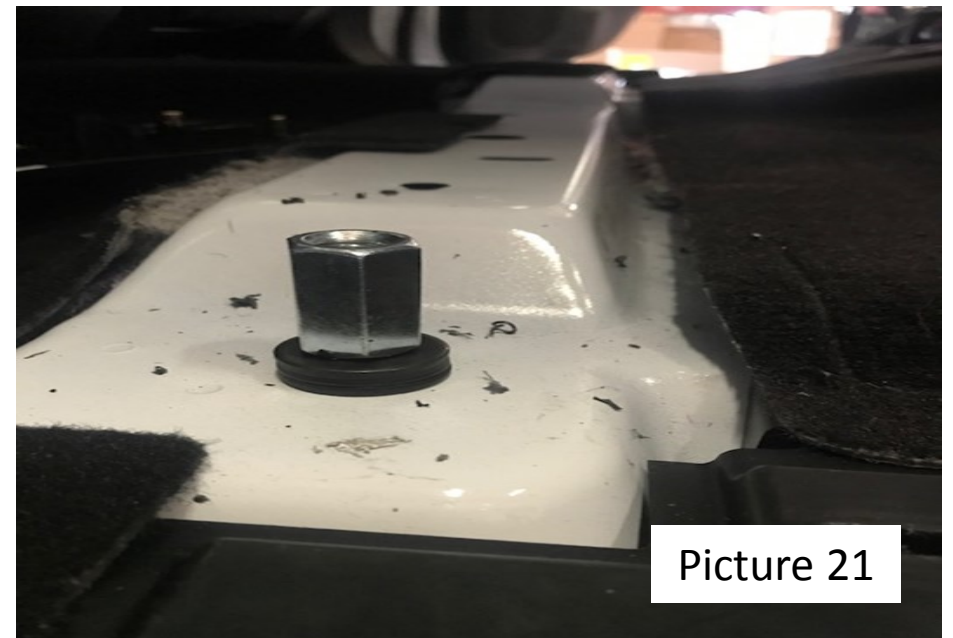
Installing the Seat Belt Center Anchor in the middle of the vehicle. The bracket is mounted to the two-center factory “U” straps. See Picture 20. Use two 1/2” bolts and nuts; the bolts need to enter from the back side of the vehicle.



Picture 20

## Installing outside Coupling Nuts

Place three the supplied Fender washers on 12mm studs. Then securely tighten the supplied Coupling Nuts on the studs. As seen in Picture 21.



Picture 21

## Reinstall the Door Sill Trim

Reinstall the Door Sill Trim. Ensure all the fasten clips are secure and the drilled hole is located directly over the Coupling Nut as seen in Picture 22.



## Installing Seat (This step will require two people)

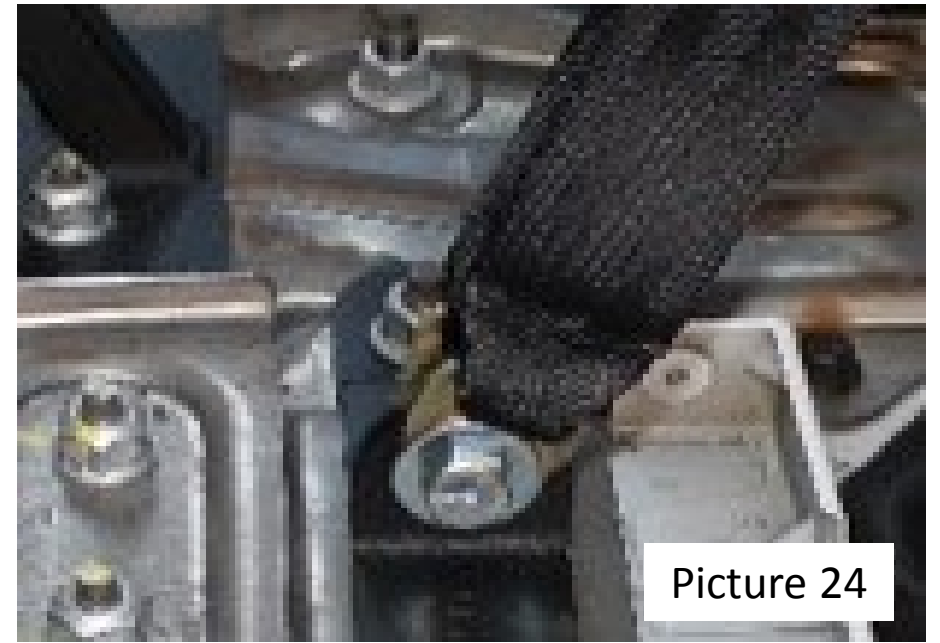
Using two people to lift the seat; maneuver it into the edge of the back door. Set the seat on the door sill. One person will need to hold on to the seat while the other person will have to enter the vehicle from the other side and move to the seat to assist in positioning the seat in the vehicle. Next lean the seat as far forward as possible; with one person holding it forward the other person will feed the seat belt anchors through the center slot in seat as seen in picture 23.





### Installing Seat continued

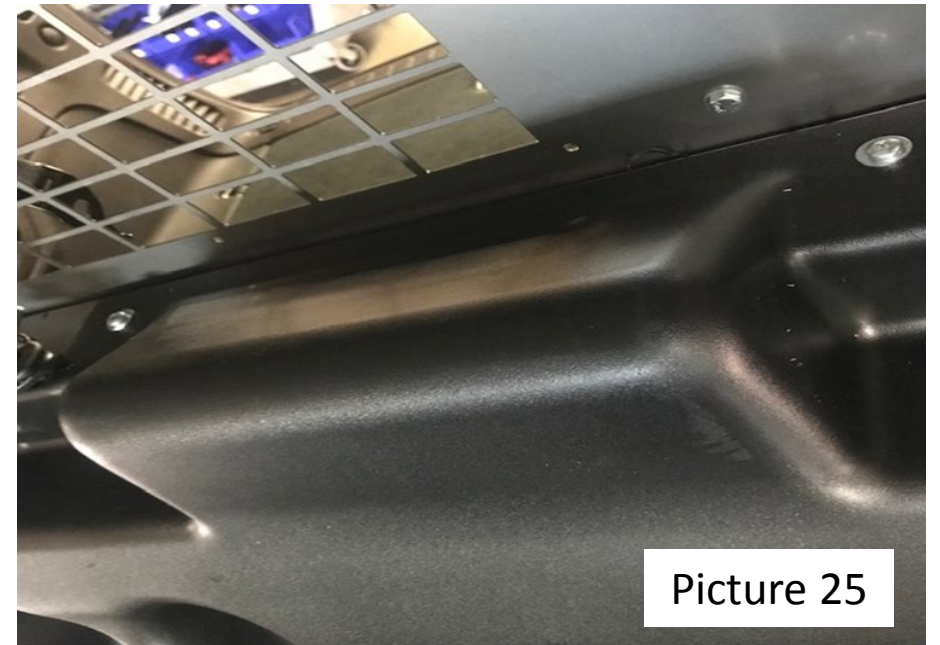
Keeping the belts straight and untwisted fasten the Anchors to the Seat Belt Center Anchor using one 3/8 bolt & Nylok to fasten the belt anchors to the Seat Belt Center Bracket. Ensure the seat back is on top of the Cross Member and as far back against the Screen as possible. As seen in Picture 24.



Picture 24

### Installing Seat continued

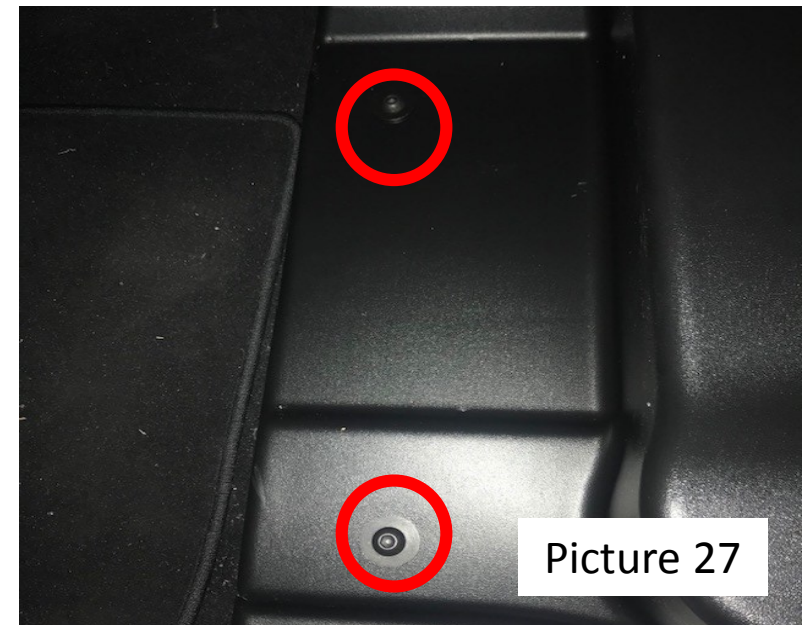
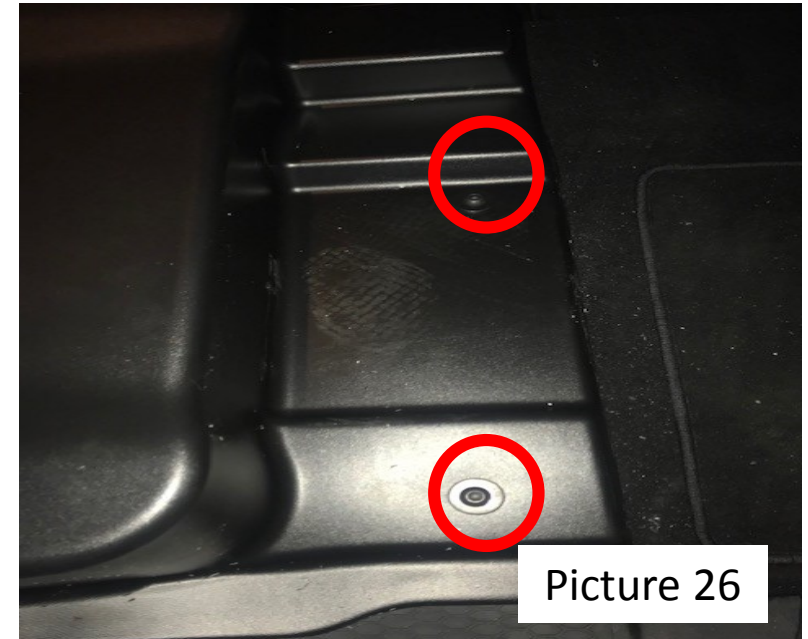
Next lean the seat back and position it as close as possible to its final position. Ensure the top back of the seat is as close to the rear screen as possible. Now line up the holes in the top of the seat with the threaded holes in the cross member. Fasten the seat to the cross member with the five supplied 1/4-20x3/4 button head bolt and 1/4" washers. Use the T27 Torx to fasten as seen in picture 25. Do not tighten the fasteners down yet.



Picture 25

## Installing Seat continued

At the bottom of the seat maneuver the seat so the holes in the seat align with the Coupling Nut. Fasten the Seat to the coupling nut using the supplied four 12mm x 16 bolts and fender washers. As seen in Pictures 26 and 27. Now tighten securely. At this time securely tighten the top of the seat to the cross member also.



### Installing Buckle Cover

There are two supplied Buckle Covers; one for each side of the seat. As seen in picture 28.

Install using the fasteners in the A Kit. Tighten securely but do not over tighten.

Repeat for the other side.

