

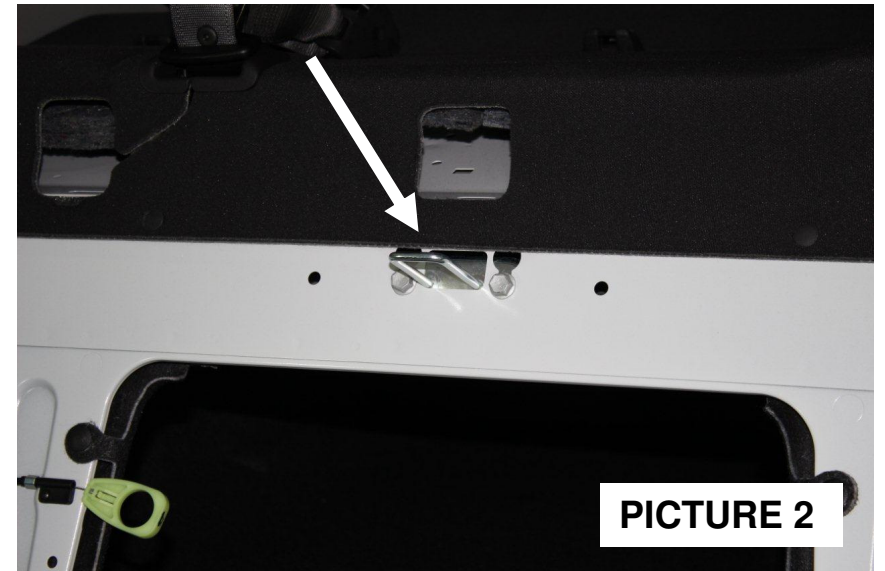
**CHEVROLET CAPRICE CENTER BELT SYSTEM INSTALLATION
INSTRUCTIONS
2014+
CARCP143**

Important Notice: Read all instructions before starting the installation of the seat. Before drilling or installing any screw or fastener into the body of the vehicle it is imperative to ensure the drill bit or fastener will not penetrate any fuel lines, fuel tanks, brake lines or wires.

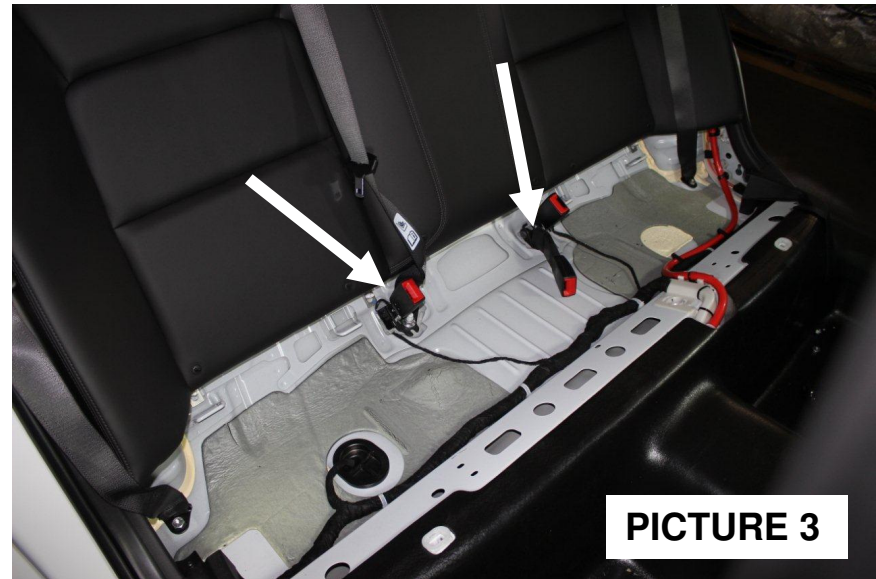
- 1) Remove the factory rear seat. The front of the bottom pads pulls straight up. And then unhook the seat from the back. Unfasten the four bolts holding the back pad using a 13mm socket. Lift the back pad up and out. Picture 1



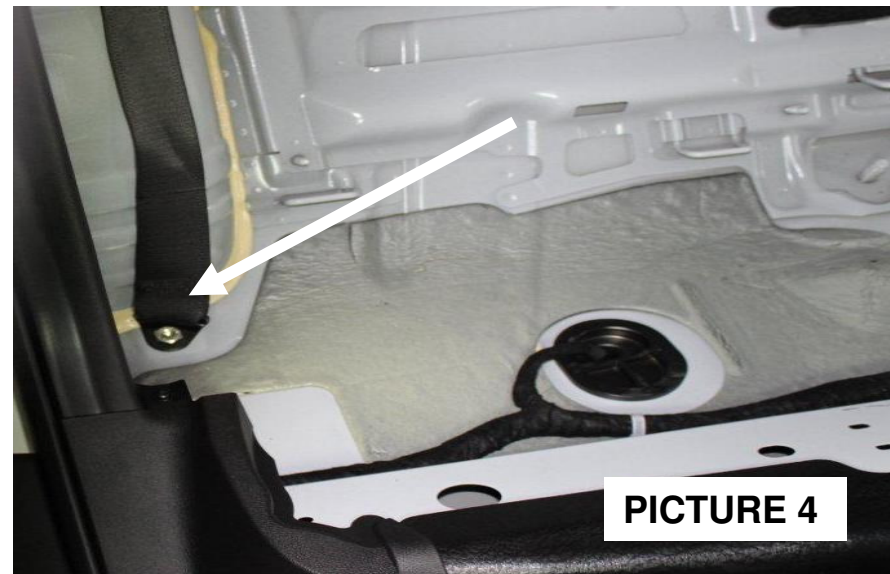
- 2) Remove and discard the "LATCH" bolt in the upper center area where the factory seat was using a 13mm socket. See picture 2.



- 3) Remove the center seat belt buckles attached to the vehicle floor using an 17mm socket. See picture 3. Save the factory nuts as the AEDEC center buckle bracket will be attached using the factory studs and nuts.



- 4) Remove the side seat belts completely. First remove the seat belt from the floor of the vehicle using either an 17mm socket or 50 torx. Again save all factory hardware as it will be used again when attaching the AEDEC Waist and Shoulder buckles. See picture 4.



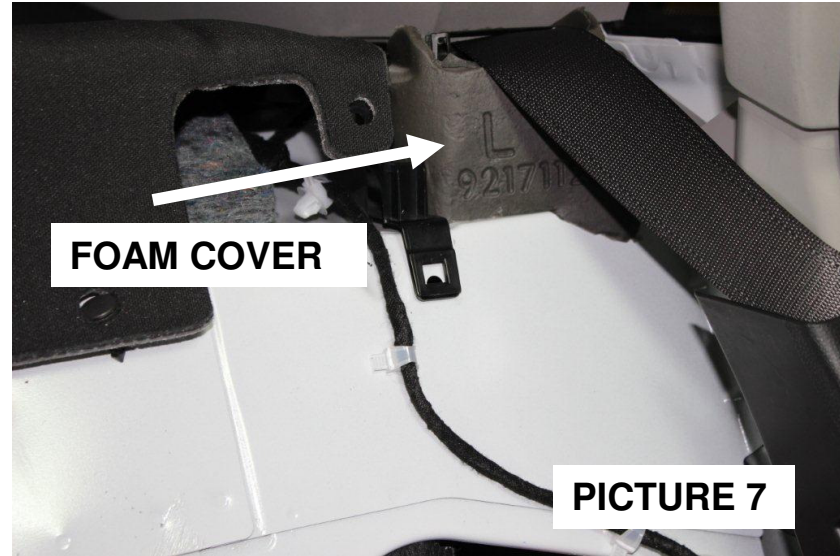
- 5) Remove the factory shoulder retractor. First pull out the rear door side trim. See picture 5.



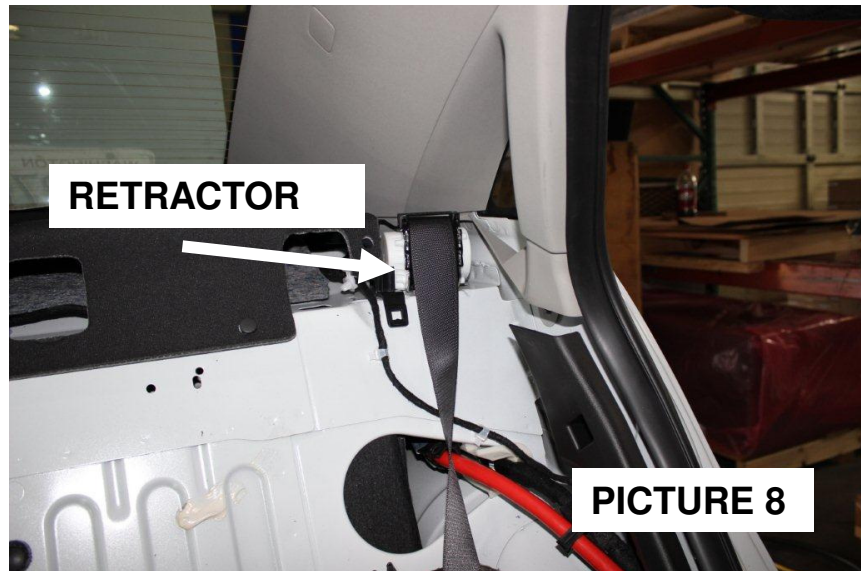
- 6) Remove the factory shoulder retractor cover trim by lifting straight up and out with the trim. Be very careful not to damage the trim while removing it. See picture 6.



- 7) Remove the foam cover that is surrounding the factory shoulder retractor. See picture 7.
-



- 8) With the retractor exposed; locate the 18mm bolt on the backside of the retractor and remove the bolt and retractor. See picture 8. Save the factory hardware as you will use it to install the Aedec Shoulder Buckle. Repeat this process for the other side also. At this time remove the center factory shoulder retractor in the same way as well.



- 9) Slide the Aedec Shoulder Buckle through the factory plastic trim as seen in picture 9. Ensure the slot in the buckle is on the bottom of the buckle.



- 10) Place the buckle and trim into position turn the parts so they are facing the middle of the vehicle to expose the factory hole as seen in picture 10. Using the factory bolt fasten the Aedec Shoulder Buckle to vehicle. Tighten securely.



- 11) Reattach the plastic trim back into place. And reattach the side plastic trim as well. Picture 11. Repeat for the other side.



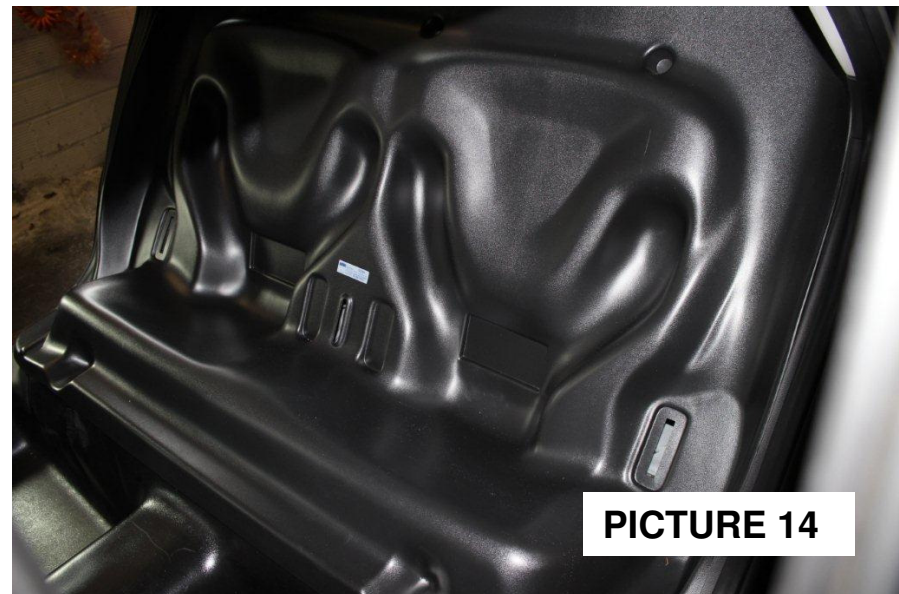
- 12) Bend down the two wire loops and cut down by half the two factory studs highlighted in picture 12. With the studs only cut in half, they will still be usable when the vehicle is decommissioned and the factory seat needs to be replaced.



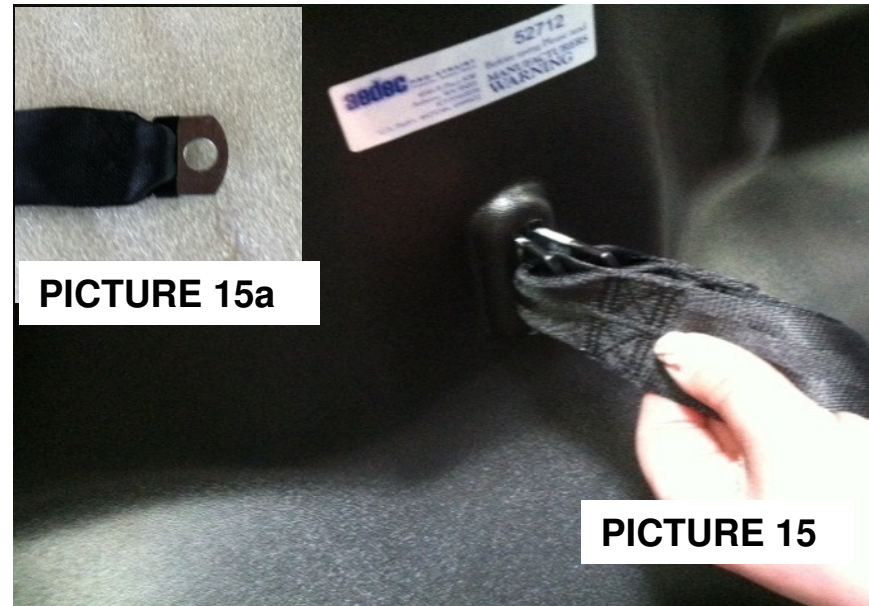
- 13) Install the Aedec seat belt brackets to the factory studs using the factory hardware. See picture 13. Center the bracket and tighten securely.



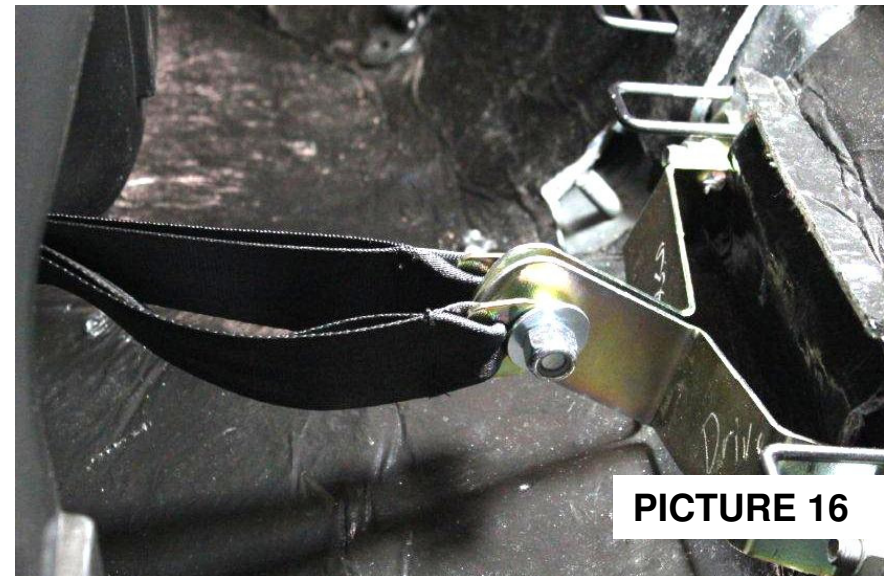
- 14) Slide the Aedec Chevy Caprice seat into the vehicle and position it to approximately where it will be positioned. See picture 14.



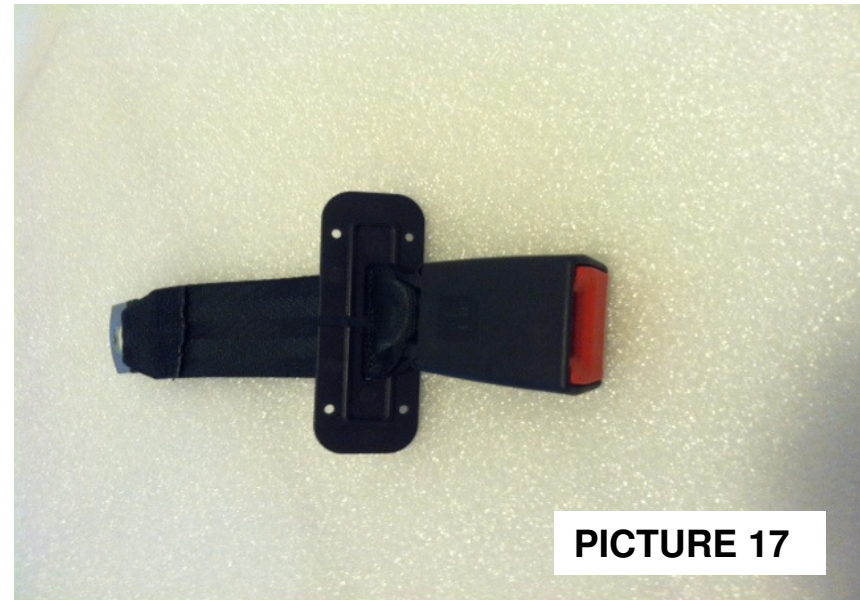
- 15) Tilt the seat all the way forward. Take the two Aedec Center Seat belts and un-package them. Slide the metal anchor (picture 15a) through the slot in the middle of the seat shown in picture 15. Make sure the shorter half of each belt is on the bottom or closest to the seat as this is the waist belt portion and the longer half of the belt is the shoulder portion of the belt.



- 16) Pull the belts all the way back to the seat belt bracket. Fasten the anchors to the seat belt bracket using the supplied 1/2"x2" cap head bolt, two 1/2" washers and the 1/2" Nylok nut. Tighten securely. The order should be bolt, washer, anchor, bracket, bracket, anchor, washer, Nylok. See picture 16.

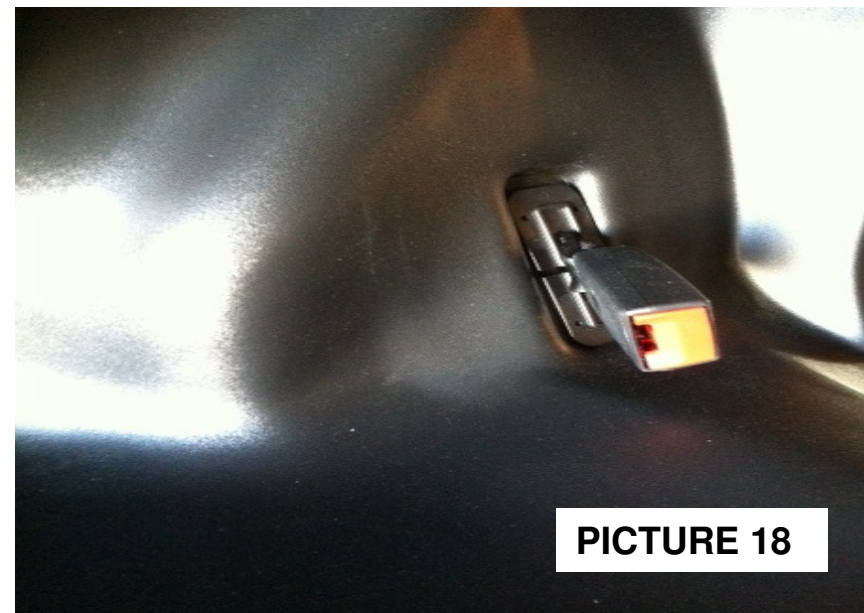


- 17) Set the seat back into its normal position, but do not secure the seat yet. Now install the Aedec Waist Buckles. Picture 17.



PICTURE 17

- 18) Slide the Aedec Waist buckle into the side waist buckle slots in the side of the seat as seen in picture 18. The buckle slot needs to be to the inside to correctly engage the seat belt.



PICTURE 18

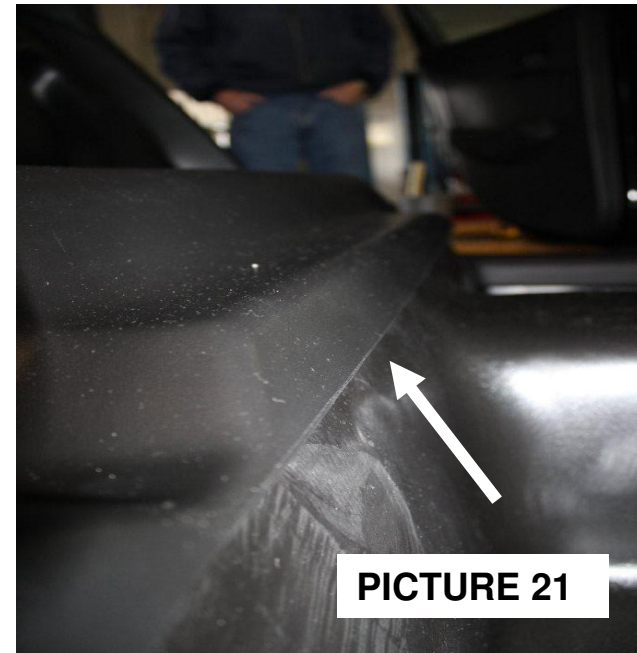
- 19) Fasten the Aedec Waist Buckle to the vehicle. It is recommended to use the 50 Torx drive on a long extension, it will help make this step easier. With the Aedec Waist Buckle fed through waist buckle slot in the seat, push the seat edge inward (NOT UP) away from the door jam. This should allow enough access to manipulate the 50 Torx drive down through the gap between the seat and the vehicle to fasten the Aedec Waist Buckle anchor to the vehicles factory location with the factory bolt. Picture 19. Tighten securely.
- Repeat for the other side.



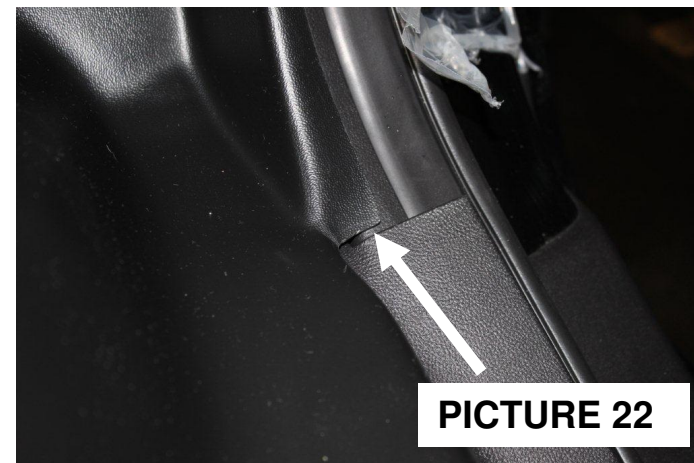
- 20) Maneuver the seat until the top of the seat is even with the top of the rear speaker cover as seen in picture 20.



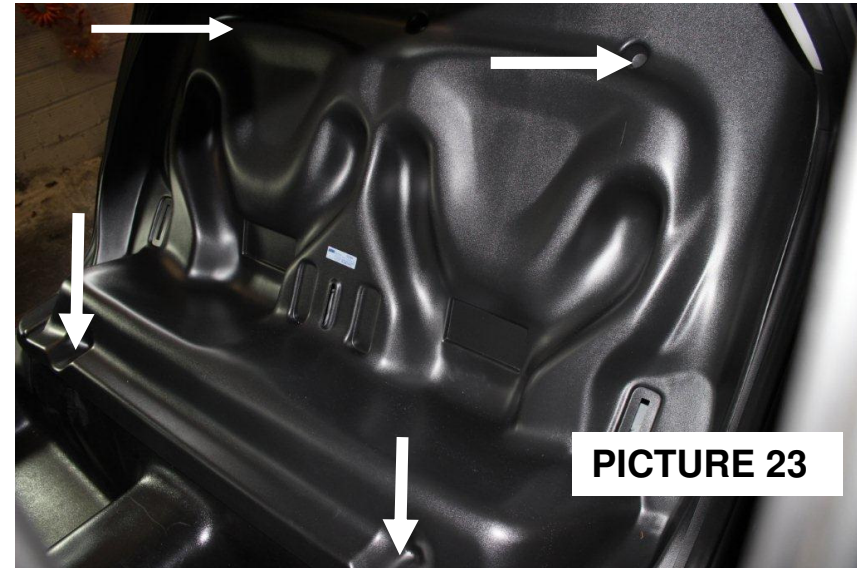
- 21) Then push the bottom of the seat tight against the vertical wall of the floor as seen in picture 21 .



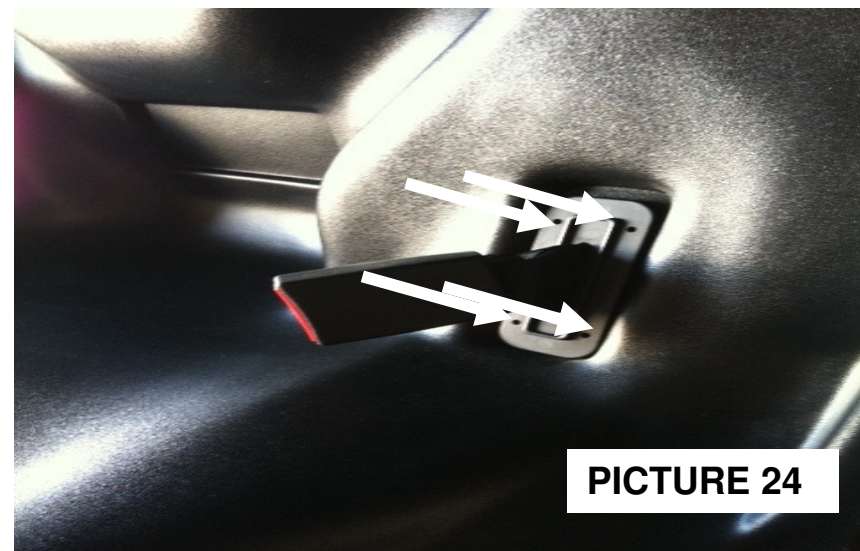
- 22) The notch on the side of the seat should be right above the plastic trim on the door jam as seen in picture 22.



- 23) Using the supplied 1/4"x 1" HWH screws and 1/4"x1" flat washers, secure the seat to the vehicle in the recessed/dimpled areas on the back of the seat. On the two dimples on the back of the seat screw straight towards the back of the vehicle. Using the supplied 1/4"x 1" HWH screws with the 1/2" bibb washers already attached; attach the seat to the vehicle at the two recessed area on the bottom of the seat insert the screws in a straight downward fashion. See picture 23.



- 24) Using the eight supplied #6x1/2" screws, fasten the Aedec Pro-Straint plates (four in each plate) to the seat. Picture 24.



- 25) Take the four handle clips and remove the protective film for the adhesive on the back (two strips each clip) and adhere the clips to the front partition as far to the outside of the vehicle as possible to make it easy for the officer to grab the seat belt handles, see . picture 25. Put two clips on each side of the vehicle. NOTE: the adhesive takes 24 hours to cure. Do not hang the seat belt handles on the clips for 24 hours.
- 26) Remove the protective paper from the 3"x6" foam pad and adhere the foam pad to the rectangular recessed area in the back of the seat.
- 27) Using the supplied #10-16x3/4" self drilling screws, attach the black plastic closeout to the rectangular opening behind the seat in the trunk area.
- Make sure all the fasteners are secure. The seat is now ready for use.
- 6/11/2014

