

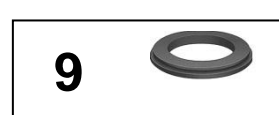
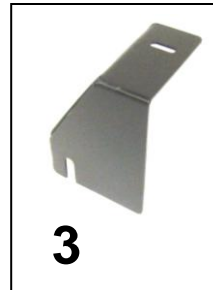
Parts List

Item	Qty.	Part #	Description	Torque
1	1	578711-521	Right Support Bracket	
2	1	578711-520	Left Support Bracket	
3	1	578721-531	Right Auxiliary Bracket	
4	1	578721-530	Left Auxiliary Bracket	
5	2		Spacer	
6	8		1/4" x 3/4" Button Head Bolt	5 ft. lbs.
7	8		1/4" Flat washer	
8	2		1/4" Serrated Hex Nut	
9	2		Panel Grommets	
10	1	578721-510	Electronics Tray	

Tool Required:

10mm, 15mm & 7/16" Socket
 Ratchet & Ratchet Extensions
 Swivel Joint Adapter
 1/8" Hex Key

Approximate installation time: 30 min



IMPORTANT INSTALLATION NOTES AND SUGGESTIONS

Read the installation instructions completely and verify that all of the parts listed are accounted for. If you have defective, missing, or damaged parts or need assistance, please contact Go Rhino Products for fast, friendly customer service at: (888) 427-4466 or email: sales@gorhino.com

Aedec seat is required for installation.

To maintain and care this product keep it clean and do not use abrasive cleaners or polish waxes.
 Texture Painted Finish: Mild liquid detergent may be used.

Installation Instructions

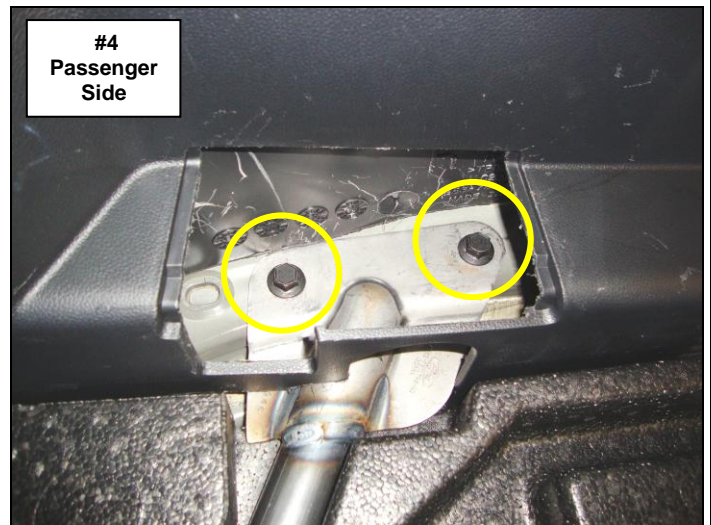
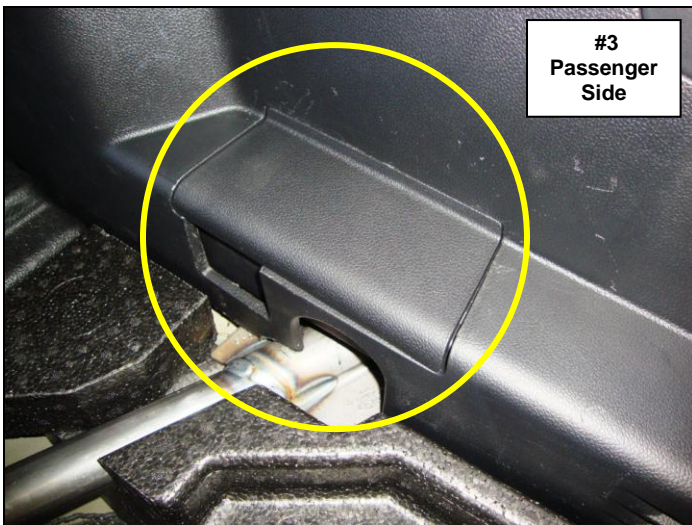
Step-1 In the cargo area, remove the rear section of the cargo floor from the vehicle and set aside.

Step-2 Remove the (2) bolts one per side securing the front section of the cargo area floor using a 10mm socket and ratchet. Do not remove the front section of the cargo area floor from the vehicle.

Step-3 Reference the installation instructions included with the Aedec seat and proceed with installing the seat crossbar in the vehicle, (Photo 1 & 2). Do not install the Aedec seat floor strut brackets to the vehicle or to the Aedec seat crossbar at this time. Resume installation of the Aedec seat after completing installation of the elevated electronics tray brackets and elevated electronics tray.

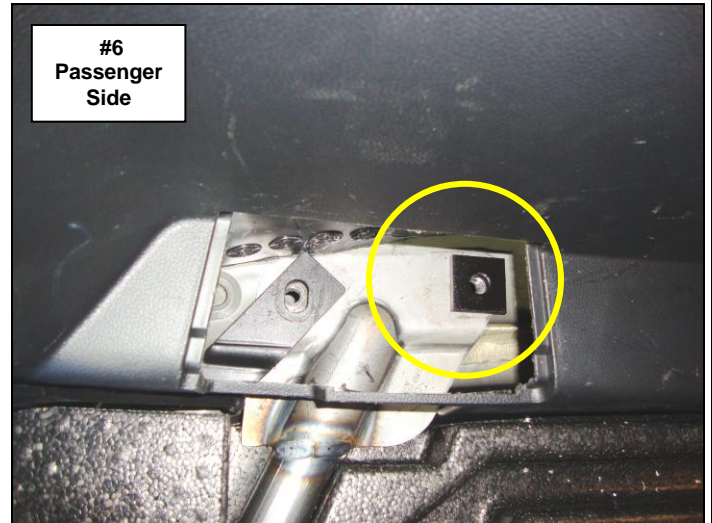


Step-4 In the cargo area, remove the left and right plastic access cover, and remove the (4) bolts two per side securing the structural reinforcement X-Brace using a 15mm socket and ratchet, (Photo 3 & 4). **Note:** The access covers will not be re-installed.



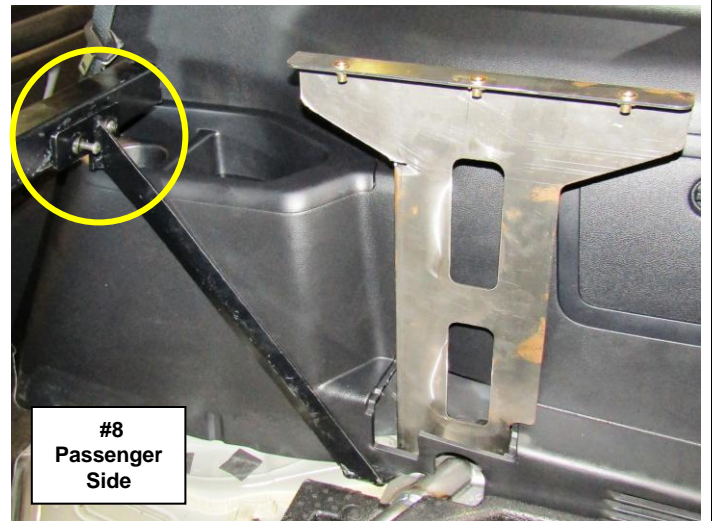
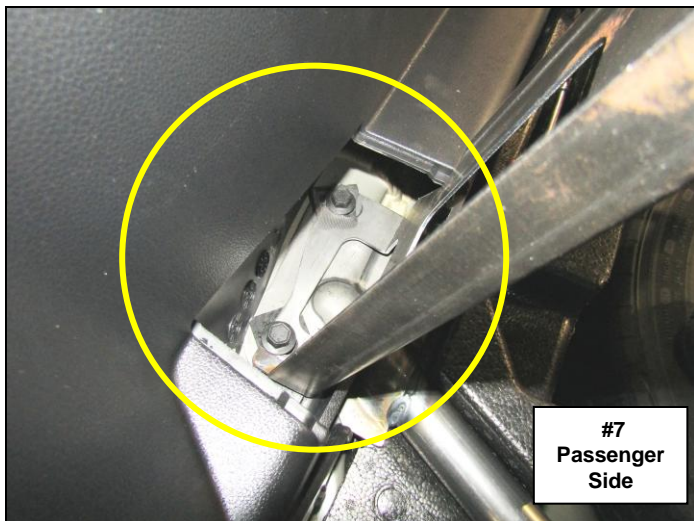
Step-5 Position the lower mounting flange of the Aedec right floor strut under the interior trim and align the hole in the mounting flange with the X-Brace attachment hole toward the front of the vehicle, (Photo 5).

Step-6 Position one of the supplied spacers over the remaining X-Brace attachment hole, (Photo 6).



Step-7 Position the base of the Electronics Tray right support bracket on top of the Aedec floor strut lower mounting flange and the supplied spacer, align the holes and reinstall the (2) factory bolts, (Photo 7). Snug, do not tighten the bolts.

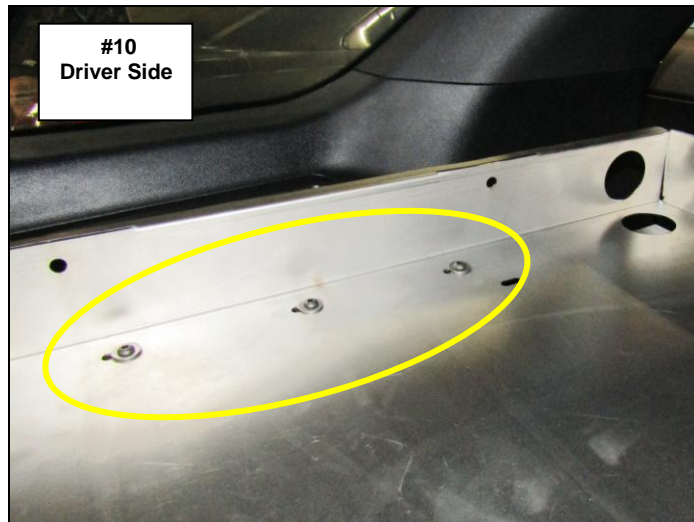
Step-8 Secure the Aedec floor strut upper mounting flange to the (2) threaded nut-serts in the Aedec seat crossbar using the bolts and washers supplied with the Aedec seat, (Photo 8). Leave the bolts loose.



Step-9 Repeat Steps 5-8 to install the left Aedec floor strut and Electronics Tray left support bracket, then tighten all factory bolts securing the left and right support brackets and Aedec floor struts.

Step-10 With assistance, position the Electronics Tray in the rear of the vehicle with the bottom resting on top of the support brackets, (Photo 9).

Step-11 Align the holes in the bottom of the Electronics Tray with the nut-serts in the support brackets, and secure the Electronics Tray to each support brackets using the (3) 1/4" x 3/4" button head bolts and (3) 1/4" flat washers, (Photo 10). Do not tighten the bolts

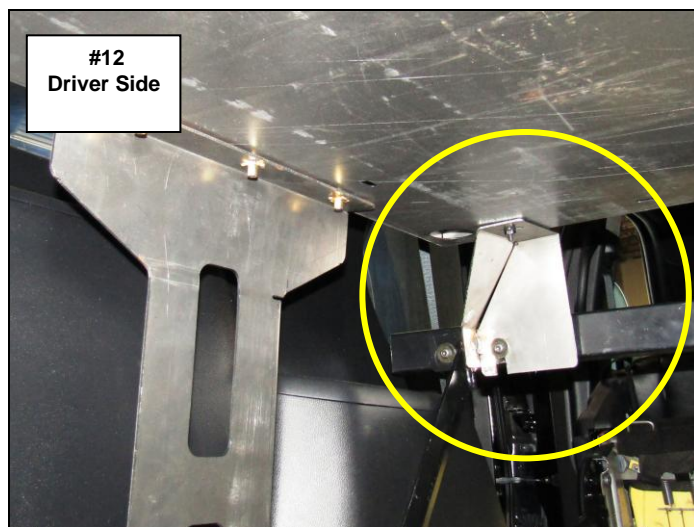
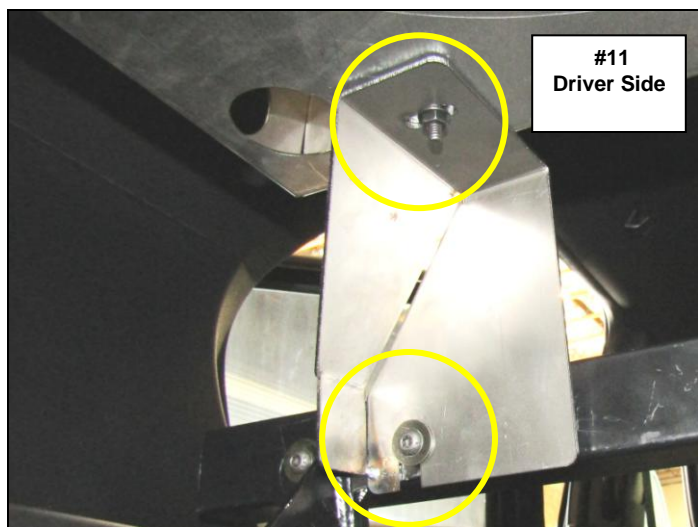


Step-12 Position the left auxiliary bracket (slotted end), between the Aedec floor strut upper mounting flange and the flat washer installed on the bolt closest to the center of the vehicle, (Photo 11). Snug, do not tighten the bolt.

Step-13 Align the hole in the bottom of the Electronics Tray with the hole in the left auxiliary bracket and secure the auxiliary bracket to the bottom of the Electronics Tray using (1) 1/4" x 3/4" button head bolt, (1) 1/4" flat washer and (1) 1/4" serrated hex nut, (Photo 11 & 12). Snug, do not tighten the nut and bolt.

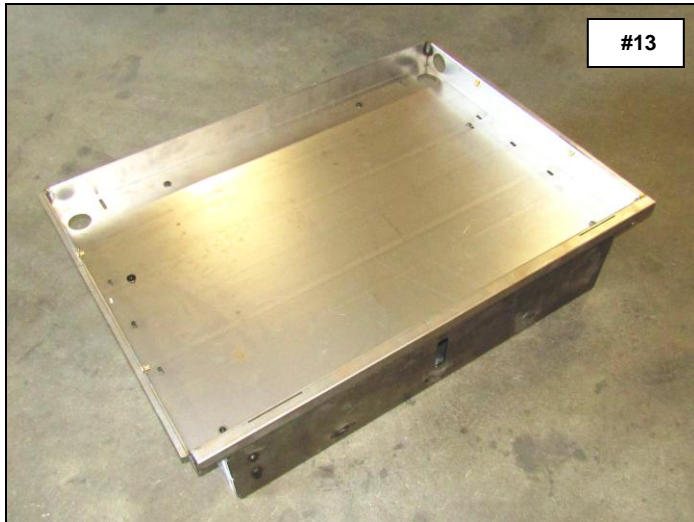
Step-14 Repeat Steps 12-13 to install the right auxiliary bracket.

Step-15 Tighten all nuts and bolts securing the Electronics Tray to the support brackets and auxiliary brackets, and bolts securing the Aedec floor struts to the Aedec seat cross bar.



Step-16 Reference the installation instructions included with the Aedec seat to complete the seat installation.

Optional: If a Go Rhino 6" 1-Drawer Box 578010 is to be installed in conjunction with the Elevated Electronics Tray, attach the 1-Drawer Box to the bottom of the Electronics Tray using the 1/4" x 3/4" button head bolts and 1/4" flat washers supplied with the 1-Drawer Box prior to positioning the Electronics Tray in the rear of the vehicle, (Photo 13 & 14).



Step-17 Reinstall the front and rear section of the cargo floor.