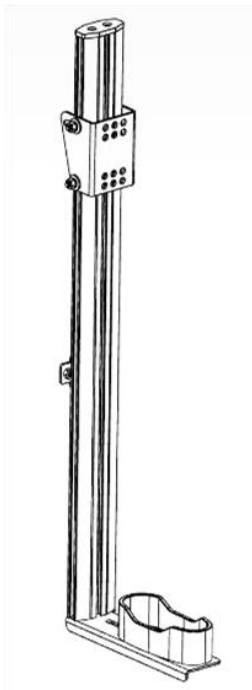




## INSTALLATION INSTRUCTIONS



### PART NO.

- 574004

### PRODUCT DESCRIPTION:

- Single Gun Rack

### PRODUCT SAFETY & LEGAL DISCLAIMER

- **IMPORTANT READ ALL INSTRUCTIONS CAREFULLY BEFORE INSTALLING, FAILURE TO DO SO MAY CAUSE PERSONAL INJURY OR DAMAGE TO PRODUCT AND/OR PROPERTY.**
- **Review the product package and contents prior to beginning the installation.** Take care when opening the packaging and removing items. If a return is needed you will want to return the product in its original packaging if possible.
- This instruction guide is provided as a GENERAL installation guide, some vehicles vary dimensionally and may require additional steps.
- Test fit the product on the vehicle prior to any third party modifications and or finishing. The manufacturer and/or distributors do not accept responsibility for third party charges, labor and or third part replacement modifications. Some modifications may void the factory warranty.
- Exercise due-diligence when installing this product. The manufacturer and distributors of this product do not accept any responsibility for vehicle damage or personal injury resulting from the installation of this product. Careless installation and operation can result in serious injury or equipment damage.
- This product is for general off-road use. All liability for installation and use rests with the owner/operator.
- **INSTALLER:** Once installation is complete, please return this guide along with other documentation included in this product back to the consumer for future reference. The manufacturer/distributors of this product do not guarantee this particular version will be available at a later date.

© 2016 Go Rhino Products. All rights reserved

[www.gorhino.com](http://www.gorhino.com)

589 W. Apollo St., Brea, CA 92821

P: 888 427 4466



**WARNING:** Cancer  
and Reproductive Harm

[www.P65Warnings.ca.gov](http://www.P65Warnings.ca.gov)



## INSTALLATION INSTRUCTIONS

### INJURY HAZARD

Please complete a shop and tool inspection prior to beginning the installation.

- Always make sure you have a clean, dry and well lit work area.
- Always remove jewelry, loose fitting clothing and wear protective gloves and eye protection.
- Always use extreme caution when jacking or raising a vehicle for work. Set the emergency brake and use tire/wheel blocks and jack stands. Refer to the vehicle manufacturer hand book. Utilize the vehicle manufacturers designated lifting points.
- Always use appropriate and adequate care in lifting parts during disassembly and installation. Seek help in lifting heavy or large items into place. Utilize jacks and or lifting devices when available.
- Always insure products are secure during disassembly and installation.
- Always wear eye protection and take steps to protect any exposed skin during the installations. Drilling, cutting and grinding plastic and metal may create flying particles that can cause injury.
- Always use extreme caution when drilling, cutting and or grinding on a vehicle. Thoroughly inspect the area to be drilled, on both sides of material, prior to modification and relocate any objects that may become damaged.
- Always assemble and tighten all fasteners per the installation instructions.
- Always route electrical cables carefully. Avoid moving parts, parts that may become hot and rough or sharp edges.
- Always insulate and protect all exposed wiring and electrical connections.

### MAINTENANCE AND CARE

- Always perform regular inspections and maintenance on mounts and related fasteners.
- Periodically check and tighten all fasteners.
- Stripped, fractured, or bent fasteners must be replaced.
- After washing the vehicle make sure to fully dry all surfaces.
- In areas with cold temperatures make sure to wash the product often to remove harmful materials used on road ways.
- Never use abrasive cleaners or polish compounds. Clean with a gentle soap and water. If you use wax use a non-abrasive automotive wax such as pure carnauba wax.

### WARNING

Some products have been designed to work together with factory rear sensor systems, factory forward facing sensor systems and factory air bags.

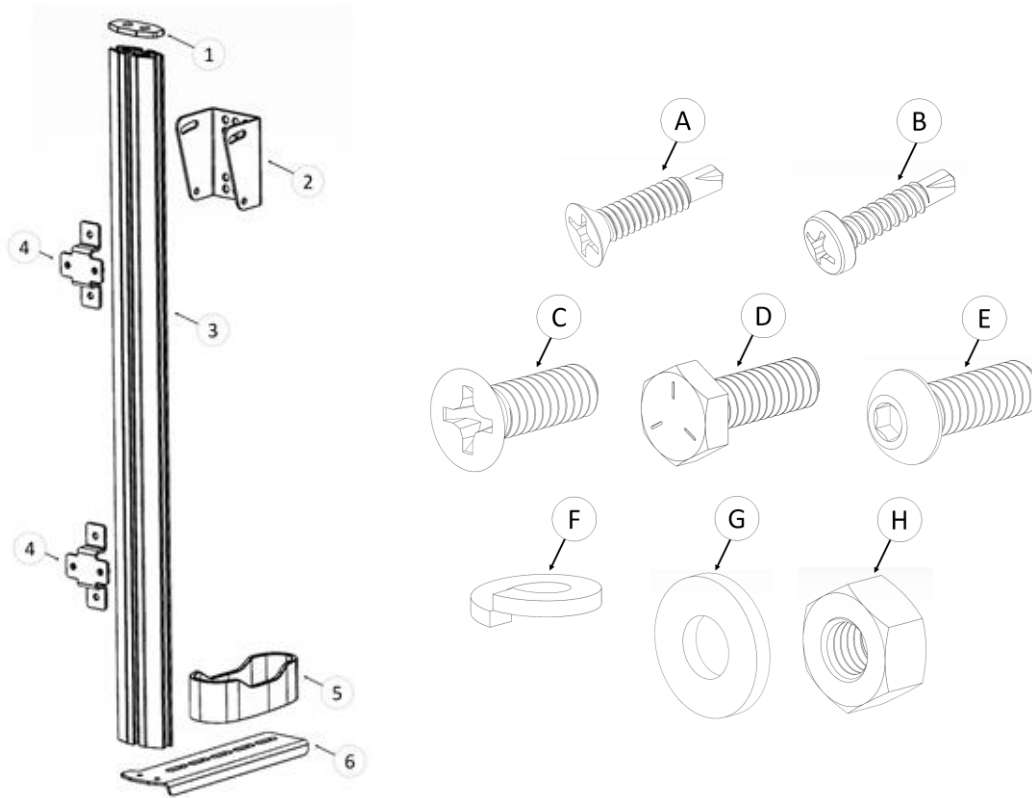
- Installation of some of these products may alter the factory sensor system performance.
- Factory sensors may read shackles or hooks protruding from the fairlead and or tow hooks.
- All sensor testing is completed by Go Rhino Products and or third party testing labs on modified vehicles.
- Sensor sensitivity, factory sensor housing, orientation, and operating conditions are all variables that will influence functionality of the sensors.
- Installation of some product may effect the factory air bag systems.
- Some products allow the use of third party products such as winches, shackles, hooks, etc. Follow the respective manufacturers operating instructions for use with our products.
- Make sure to fully understand the product, it's intended use and operation prior to use.
- Above all... be safe!



## INSTALLATION INSTRUCTIONS

### PARTS INCLUDED IN THIS LIST:

ITEM	QTY.	PART #	DESCRIPTION	ITEM	QTY.	PART #	DESCRIPTION
1	1	59350003AA	Rail End Plate	A	4	AST-T917G4	#12 Flat Head Drilling Screw
2	1	5740036DA	Pivot Bracket	B	2	AST-T02	#12 Round Head Drilling Screw
3	1	5740036AA	Universal Rail	C	2	90273A540	1/4"-20 x 3/4" Flat Head Screw
4	2	5740030BB	Rail Bracket	D	4	AST-T870G4	1/4"-20 x 3/4" Hex Head Screw
5	1	ASM-GUNR	Butt Plate	E	8	AST-T835G4	1/4"-20 x 3/4" Button Head Screw
6	1	5740036BA	Butt Plate Bracket	F	14	AST-RPR70G4	1/4" Lock Washer
7	1	ASH-E149	Butt Plate Felt Liner (Not Shown)	G	14	AST-RP21G4	1/4" Flat Washer
				H	10	AST-TU119G4	1/4"-20 Hex Nut



Go Rhino recommends you, the installer, read this installation instruction manual from front to back before installing the product.

### TOOLS NEEDED FOR INSTALLATION:

- 7/16" Wrench
- Phillips Head Screw Driver
- 5/32" Hex Key
- Tape Measure
- Drill Motor
- 5/16" Drill Bit

**ESTIMATED TIME FOR INSTALLATION:**

**1 Hour**

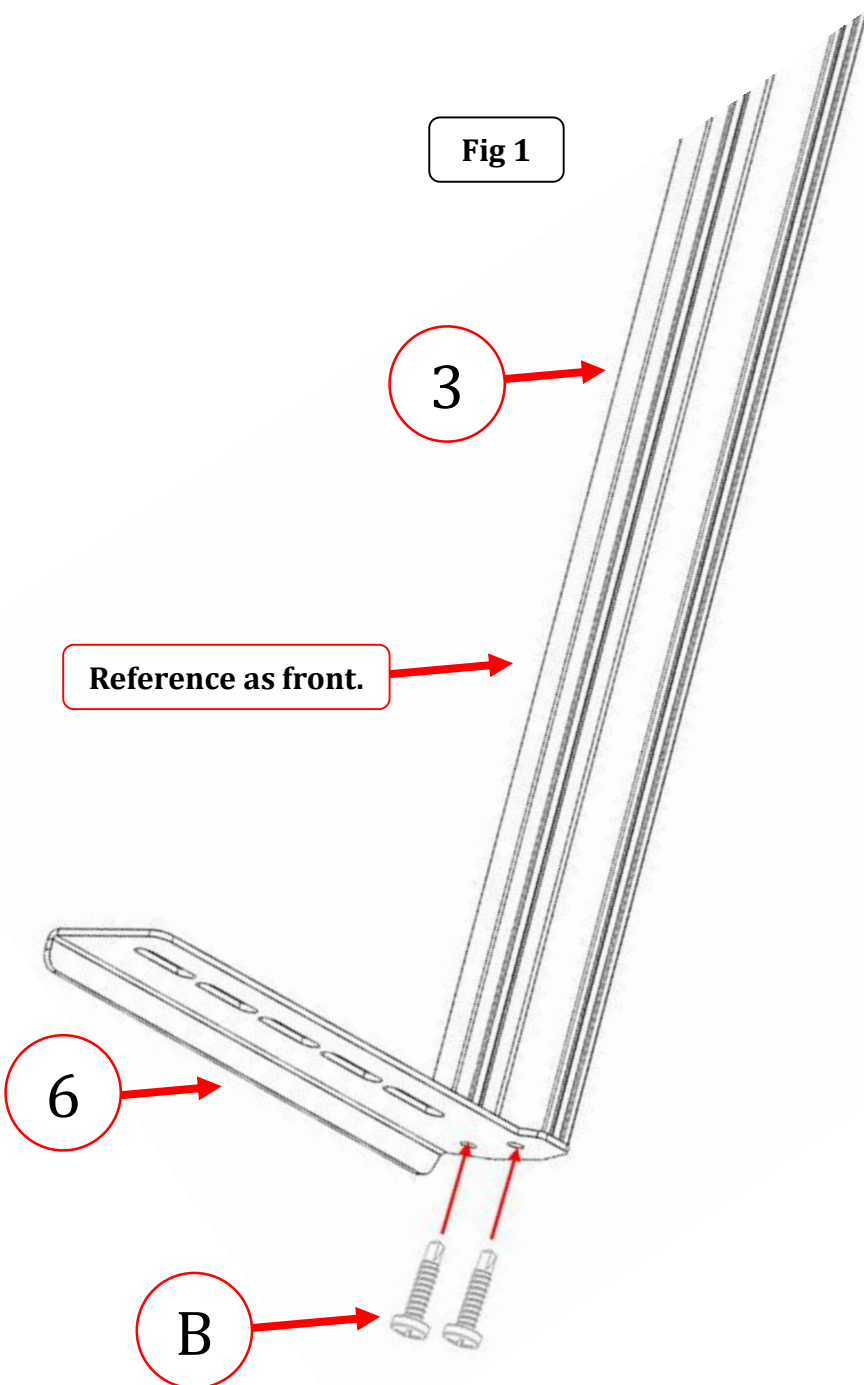
If you need installation service for your new product, call the authorized distributor from whom you purchased the product or an authorized installation service company which can be found by calling toll free 1-888-427-4466



## INSTALLATION INSTRUCTIONS

**Note:** The Universal Rail profile has four sides. The wider sides of the profile will be made reference to as the front or back throughout the installation steps.

**Step-1** Install the Butt Plate Bracket to one end of the Universal Rail using (2) #12 x 1" Flat Head Drilling Screws and (2) #12 Countersunk Washers, (Fig 1). Tighten the screws Note: The side of the rail that the Butt Plate Bracket is extending out from will be referenced as the front.

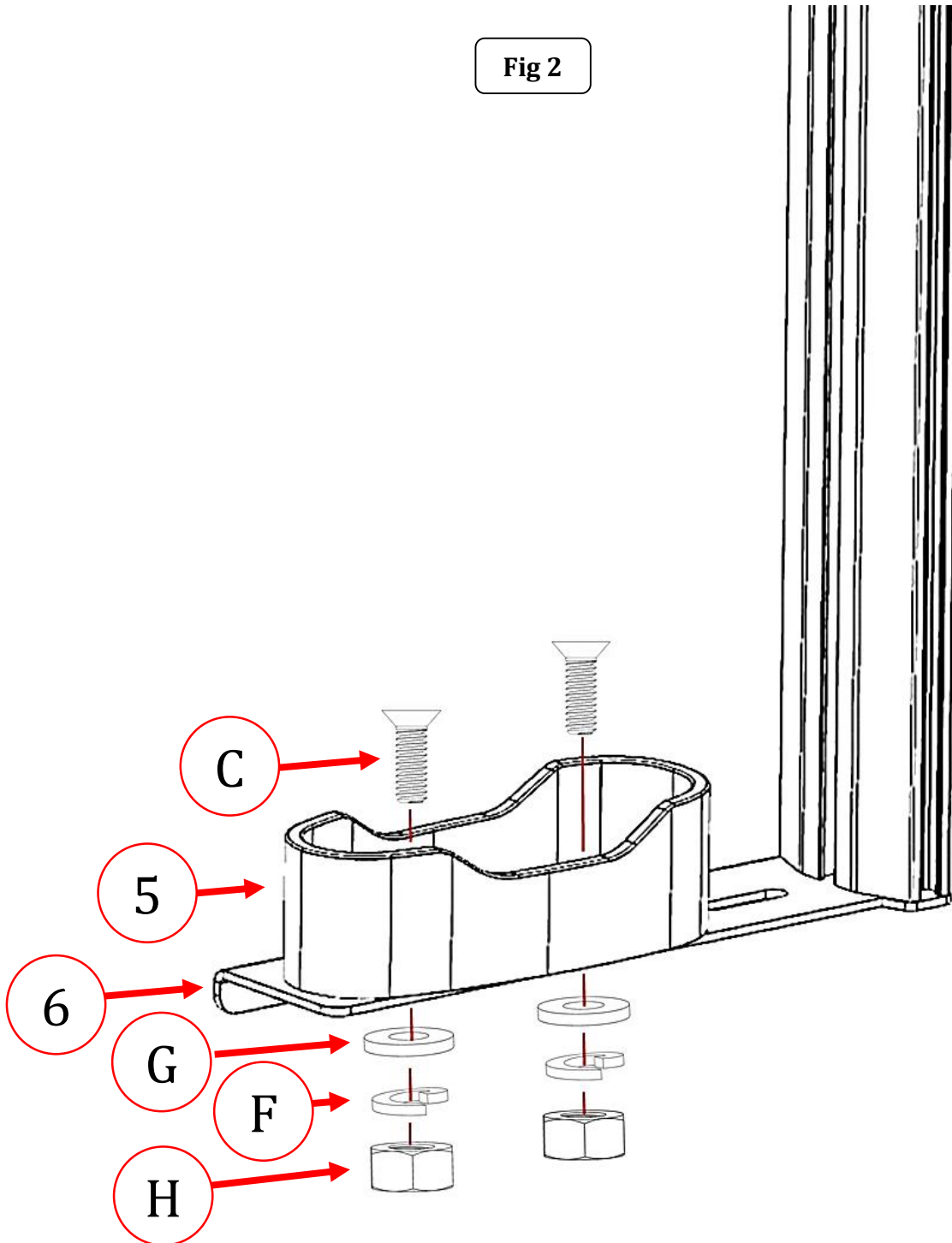




## INSTALLATION INSTRUCTIONS

**Step-2** Install the Butt Plate to the Butt Plate Bracket using (2) 1/4" x 3/4" Flat Head Screws (2) 1/4" Flat Washers, (2) 1/4" Lock Washers and (2) 1/4" Hex Nuts, (Fig 2). Snug but do not tighten the screws.

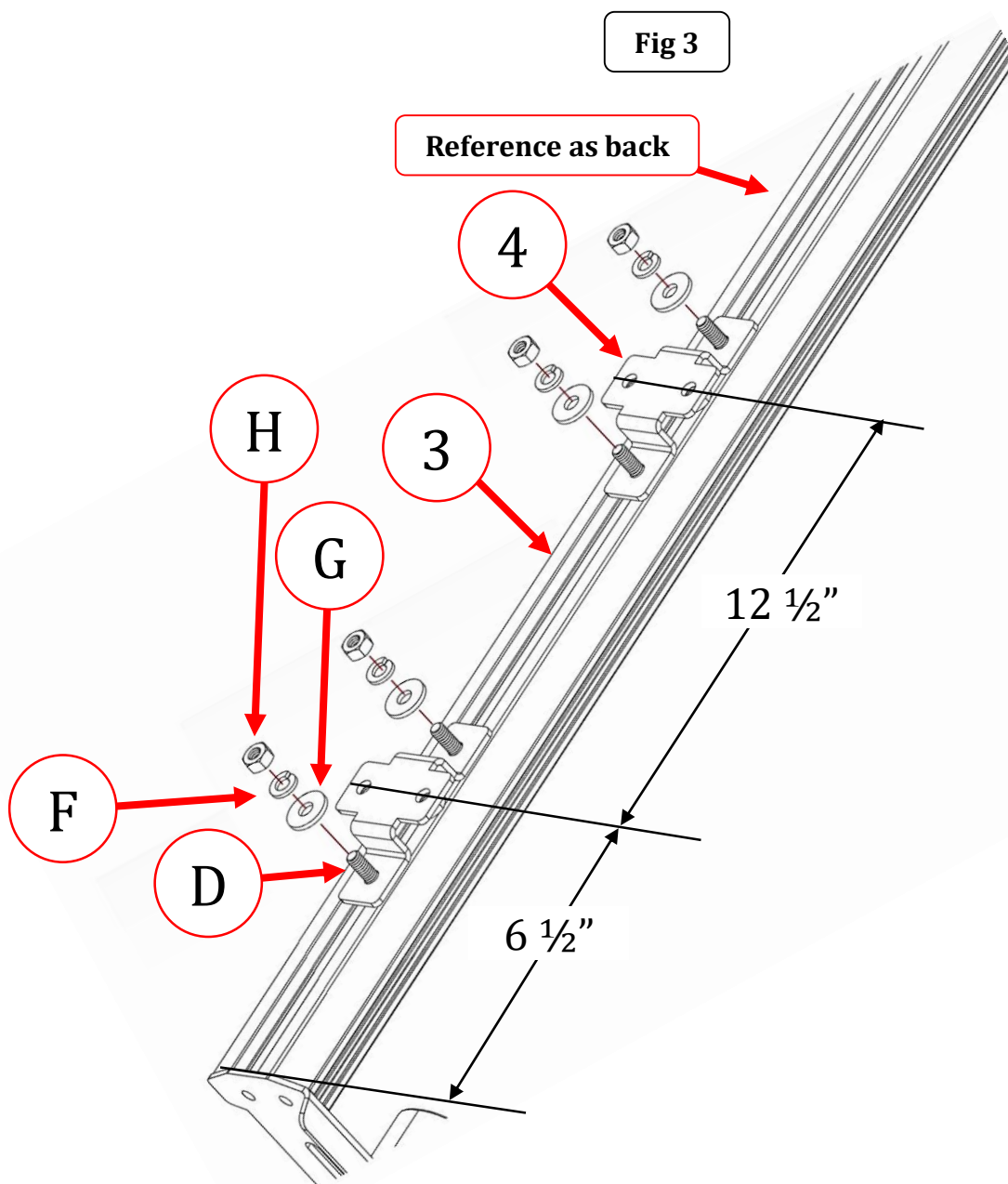
Fig 2





## INSTALLATION INSTRUCTIONS

**Step-3** From the back of the Universal Rail, end-feed (4) 1/4" x 3/4" Hex Bolts, slide into the T-Slot opening at the end of the Universal Rail. Install each Rail Bracket to the back of the Universal Rail using two of the 1/4" x 3/4" Hex Bolts, (2) 1/4" Flat Washers, (2) 1/4" Lock Washers and (2) 1/4" Hex Nuts. Initially position the Rail Brackets so the center of the first Rail Bracket is positioned 6 1/2" from the bottom end of the Universal Rail with the attached Butt Plate Bracket, and the second Rail Bracket is positioned 12 1/2" from center to center with the first Rail Bracket then tighten the nuts and screws. Note: The Rail Brackets can be positioned along the length on the Universal Rail at your intended location.

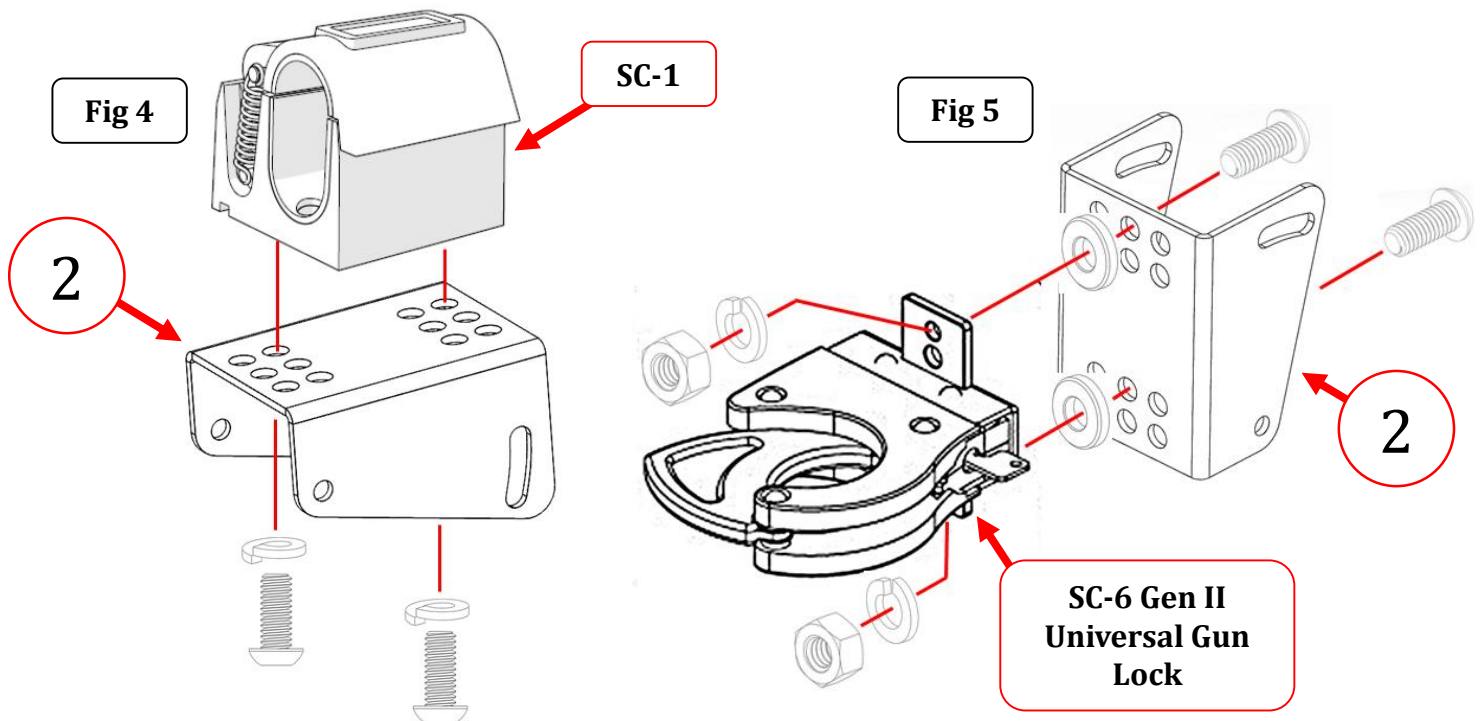




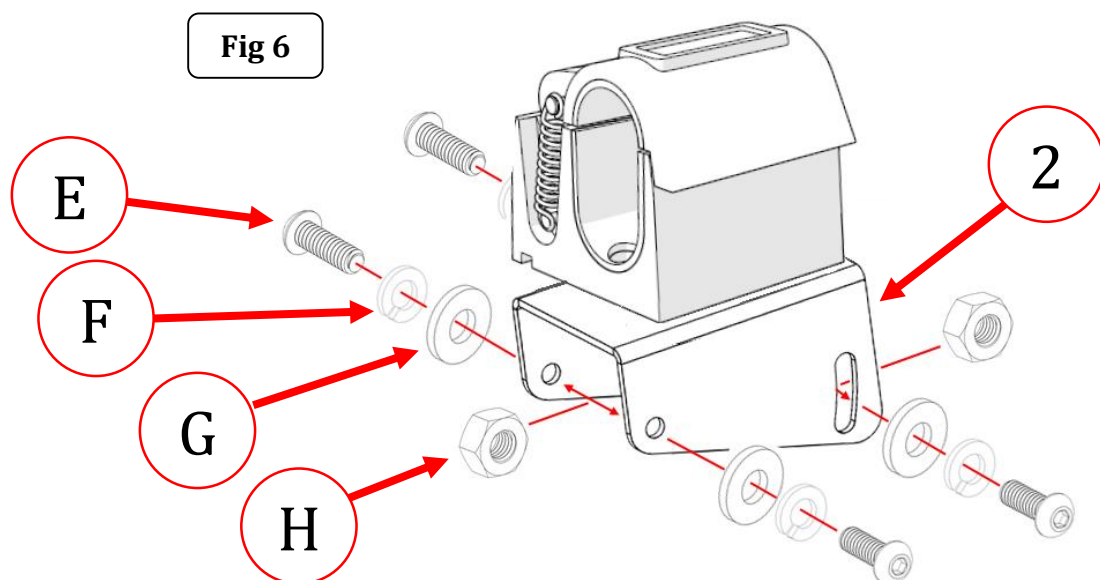


## INSTALLATION INSTRUCTIONS

**Step-4** Install the SC-1 Gun Lock (Fig 4) or SC-6 Gen II Universal Gun Lock (Fig 5) to the Pivot Bracket as shown, using the fasteners supplied with the Gun Lock. Tighten the fasteners.



**Step-5** Loosely assemble (1) 1/4" x 3/4" button head screw, (1) 1/4" lock washer, (1) 1/4" flat washer and (1) 1/4" hex nut in each round and arc-slot hole in the Pivot Bracket as shown, (Fig 6).

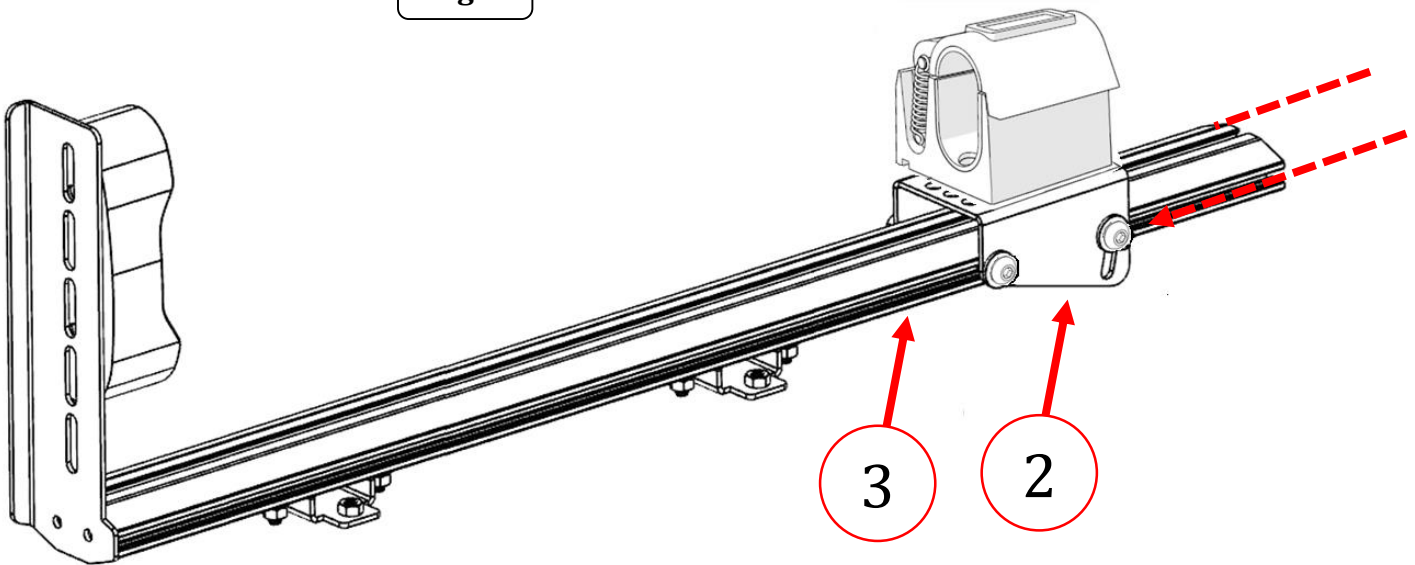




## INSTALLATION INSTRUCTIONS

**Step-6** Position the Universal Rail on a flat surface with the front side up. From the opposite end of the Universal Rail, align the 1/4" Hex Nuts installed in the Pivot Bracket with the T-Slot on each side of the Universal Rail. end-feed the 1/4" Hex Nuts, slide into the T-Slot opening at the end of the Universal Rail, then slide the Pivot Bracket and fastener assembly along the front side of the Universal Rail, (Fig 7). Do not tighten the nuts and screws.

Fig 7



**Step-7** Place your actual weapon in the Gun Lock and Butt Plate. Adjust the Pivot Bracket height/angle on the Universal Rail and adjust or relocate the Butt Plate position on the Butt Plate Bracket as required until your weapon is properly lined up. Snug but do not tighten all fasteners. Check and recheck your installation by repeatedly inserting and removing the weapon from the Gun Lock and But Plate assembly. When satisfied, tighten all fasteners.

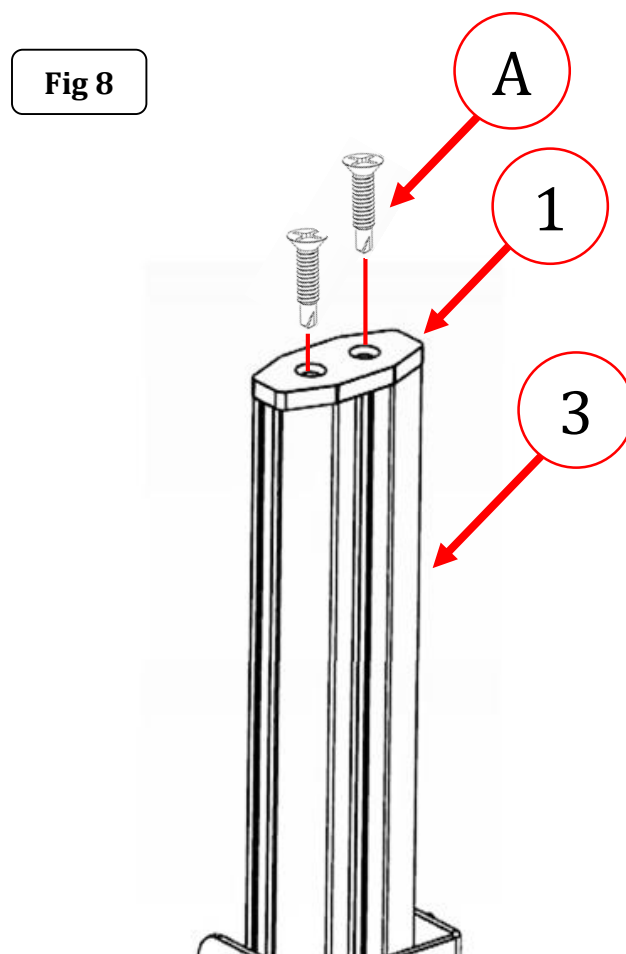
**Step-8** Remove the paper backing from the Butt Plate Felt Liner and install the Butt Plate Felt Liner inside the bottom of area of the Butt Plate.





## INSTALLATION INSTRUCTIONS

**Step-9** Install the Rail End Plate to the top of the Universal Rail using (2) #12 x 1" Flat Head Drilling Screws, (Fig 8). Tighten the screws.





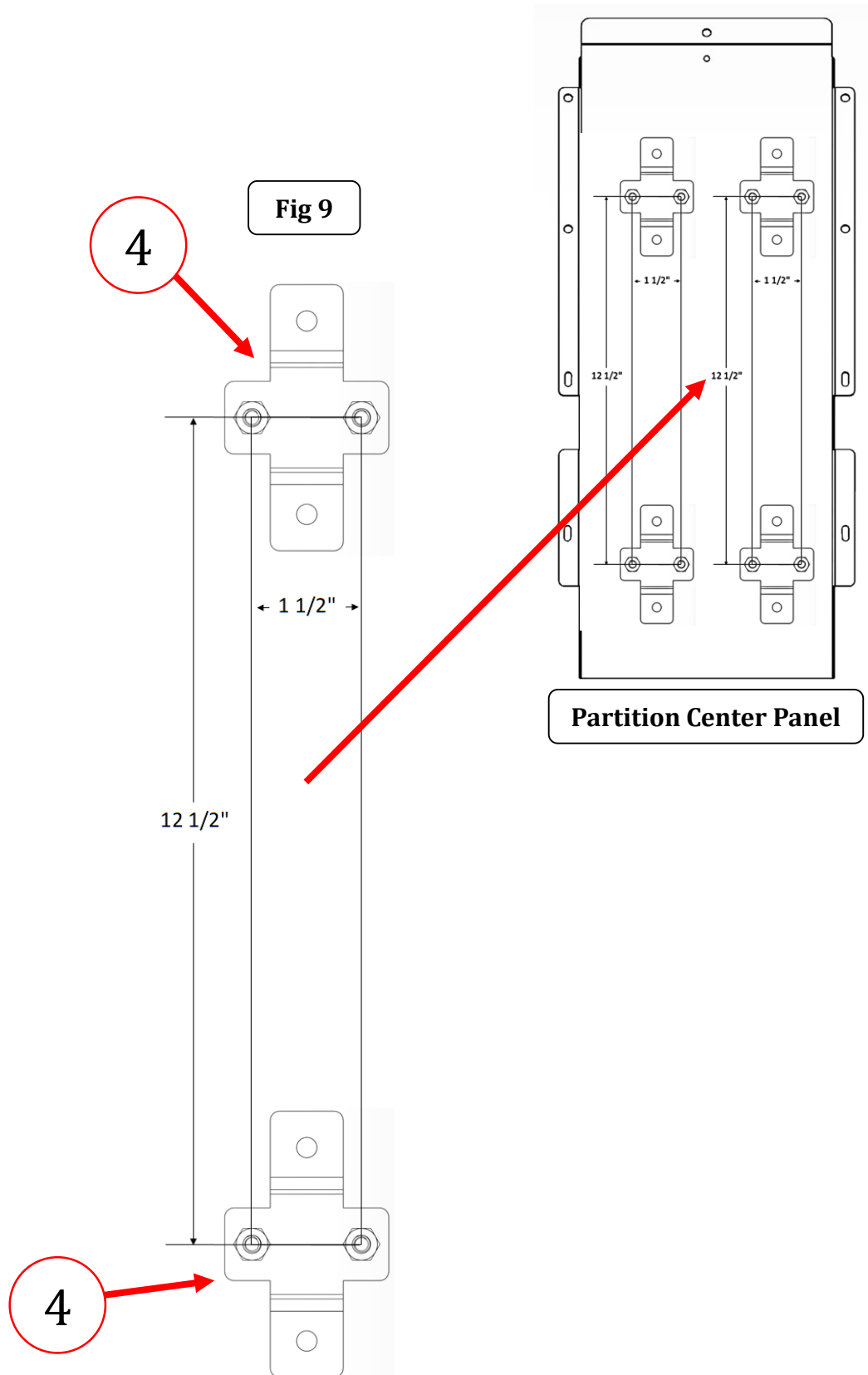
## INSTALLATION INSTRUCTIONS

**Step-10** Position the Gun Rack or Gun Racks at your intended location on the partition center panel and mark the location of the two Rail Brackets on the partition center panel. set The Gun Rack assembly aside.

**Step-11** Reference the Rail Bracket location you marked on the partition center panel and the Rail Bracket attachment hole measurements shown, (Fig 9). Transfer the attachment hole measurements to the partition center panel then drill your 5/16" holes.

**STEP-12** Position the Gun Rack on the partition center panel, then from the back of the center panel attach each Rail Bracket to the partition center panel using (2) 1/4" x 3/4" Button Head Screws, (2) 1/4" Lock Washers and (2) 1/4" Flat Washers.

**Note:** Adjust the measurements for the drill holes if the Rail Brackets were positioned on the Universal Rail at your intended location.





# INSTALLATION INSTRUCTIONS

## LIMITED WARRANTY

Go Rhino warrants to Buyer that for a period of five (5) years from the date of shipment of the product(s) ("Warranty Period") for black finishes and chrome finishes, that such products will materially conform to the specifications set forth in Go Rhino's specifications in effect as of the date of shipment(s) and will be free from material defects in material workmanship.

Go Rhino warrants to Buyer that for the life of the product(s) from the date of shipment of the product(s) ("Warranty Period") for polished stainless steel finished products purchased after April 2004, that such products will materially conform to the specifications set forth in Go Rhino's specifications in effect as of the date of shipments and will be free from material defects in material workmanship.

Warranty claims must be accompanied with the original invoice and photos of the product. It is the customer's responsibility to clean regularly and protect finish with regular applications of a nonabrasive polish that is compatible with the product's finish.

This warranty covers the cost of the product only and does not include the cost of removal, installation, third party modifications or shipping of the product. In no event shall Go Rhino be liable to buyer or any third party for any damage or harm caused by the product or use thereof, regardless of weather such damages were foreseeable and whether or not Go Rhino has been advised of the possibility of such damages, not withstanding the failure of any agreed or other remedy of its essential purpose. This warranty is void if the product shows signs of alteration, misuse, mishandling, improper care, neglect, improper application and/or damage due to improper installation.

With respect to any such product(s) during the limited warranty period, Go Rhino shall, in its sole discretion, either: (i) provide a one-time repair or replacement of such products (or the defective part) or (ii) credit or refund the price of such products at the pro rata contract rate provided that, if Go Rhino so requests, Buyer shall, at Go Rhino's expense, return such product(s) to Go Rhino. The remedies shall be the Buyer's sole and exclusive remedy and Go Rhino's entire liability for any breach of the limited warrant(ies).

Go Rhino disclaims all other warranties except to the extent that any such warranty cannot be validly disclaimed under applicable law.

### **Finish Limited Warranty:**

Limited lifetime on stainless steel products (after April 2004)

5 year warranty on black powder coat products

5 year warranty on chrome products

This warranty does not cover exposed welds

Finish warranty covers peeling, flaking, or cracking. Washing all finishes regularly with car wash soap and rinsing well with water is the best method for maintaining the finish on your products. You must also protect the finish with nonabrasive automotive wax on a regular basis. The use of any compound which contains abrasives becomes a self-defeating exercise as the compound scratches the finish and opens it to corrosion. The use of harsh chemicals used to remove bugs and tar may also cause the finish to fail and should be avoided.

If you are unsatisfied with your purchase please contact the establishment you purchased the product from.

If you need to place a warranty claim or need assistance, the Go Rhino customer service team will answer any questions you may have. Please contact the Go Rhino customer service team at 1-888-427-4466 during normal business hours Monday thru Friday 7 am to 5 pm PST. You may also email [warranty@gorhino.com](mailto:warranty@gorhino.com). In order to better serve you please provide a copy of the original invoice / receipt, a photo of the issue you are experiencing and a photo of the vehicle the product is installed on.

All warranty returns must have an approved RGA number. The RGA number must be clearly marked on the exterior of the return package. All approved warranty returns must be shipped to Go Rhino Products, 1002 Carriers Drive, Laredo, Texas 78045.

## PRODUCT REGISTRATION

Please remember to register your new purchase. You may register your product at [www.gorhino.com](http://www.gorhino.com). Registering your product may help speed any future warranty or customer service inquiries.

**Thank you again for purchasing from Go Rhino Products**

Please take a few minutes to view additional products for your vehicle and more at [GORHINO.com](http://GORHINO.com)  
These installation instructions are available on the Go Rhino web site along with installation videos for many of our products.

[www.gorhino.com](http://www.gorhino.com)

[www.bigcountryauto.com](http://www.bigcountryauto.com)

[www.gorhinopd.com](http://www.gorhinopd.com)