

Quad - Guard

Installation Instructions
32736
 GMC Sierra 1500 '14 - '15
 Chevy Silverado 1500 '14 - '15
 Chevy Tahoe/Suburban/Avalanche 1500 '14 - '15

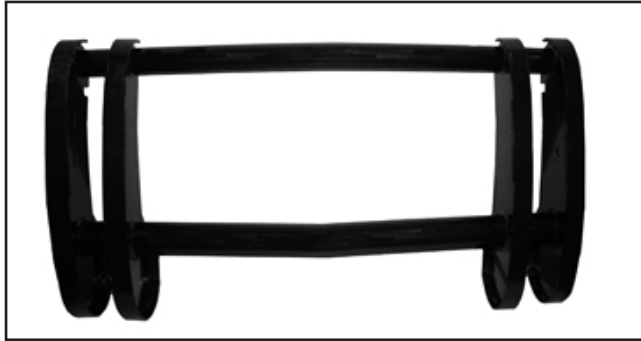


Diagram #1

Parts List:

- | | |
|-------------------------|-------------------------------------|
| 1 - Quad Guard | 4 - 1/2" Lock Washers |
| 2 - Brackets #32738-5 | 4 - 1/2 Hex Nuts |
| 4 - 1/2" x 1 1/2" Bolts | |
| 8 - 1/2" Flat Washers | <i>*May include extra hardware.</i> |

Note: Completely read instructions before beginning installation!

1. Remove the contents from the box and check for missing pieces or damage. If parts are missing or damaged, contact the original place of purchase.
2. If vehical has tow hooks skip to step three. Vehical not equipped with tow hooks will require trimming. see **Diagram #2**
3. Attach the bracket to the outside of the inside edges of the frame using the factory bolts removed in step #2 . Use **Diagram#3** to attach the bracket to the frame. On all installations the passenger side will have (1) bolt attaching the bracket to the frame, the driver side will use (2).
4. On some models the bumper area around the tow hook may need to be trimmed for bracket clearance. On some models there is a plastic trim ring around the tow hook area on the bumper that will need to be removed.
5. Attach the Quad Guard to the brackets using (2) 1/2" x 1 1/2" bolts with (4) 1/2" flat washers, (2) 1/2" lock washers and (2) nuts per bracket. Tighten all factory bolts ensuring the Quad Guard remains centered.

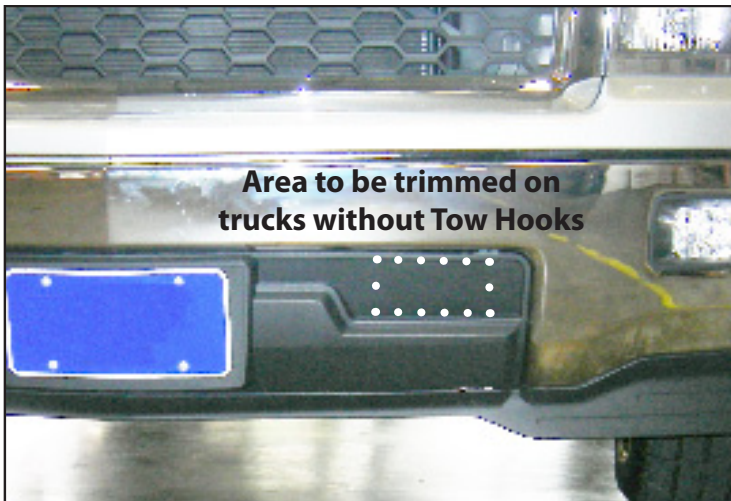


Diagram #2

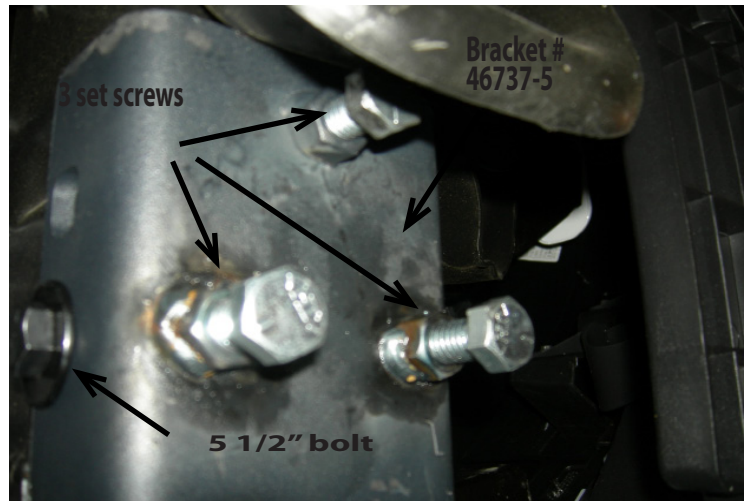


Diagram #3