

Dually Mud Flap Set

Installation Instructions

70731 SET, S70731 SET,

D70731 SET, 70731

Ford super Duty Dually '11 - '15

70731 Contains:	70731SET Contains:	D70731SET Contains:	S70731SET Contains:
2 - Mud Flaps	2 - 70731 Brackets	2 - 70731 Brackets	2 - 70731 Brackets
2 - 70731 Brackets	2 - Mud Flaps	2 - Mud Flaps	2 - Mud Flaps
4 - 1/4" x 3/4" HH Bolts	2 - 719 SS Plate	2 - 719 Diamond Plate	2 - 718 SS Stiffener
4 - 3/8" Flat Washers	2 - Anti-Sails	2 - 718 Diamond Stiffener	2 - 719 SS Plate
4 - 1/4" Self Locking Nuts	4 - 1/4" x 3/4" HH Bolts	4 - 1/4" x 3/4" HH Bolts	4 - 1/4" x 3/4" HH Bolts
6 - 3/8" x 1/14" HH Bolts	4 - 3/8" Flat Washers	4 - 3/8" Flat Washers	4 - 3/8" Flat Washers
6 - 3/8" Flat Washers	4 - 1/4" Self Locking Nuts	4 - 1/4" Self Locking Nuts	4 - 1/4" Self Locking Nuts
6 - 3/8" Hex Nuts	6 - 3/8" x 1/14" HH Bolts	6 - 3/8" x 1/14" HH Bolts	6 - 3/8" x 1/14" HH Bolts
6 - 3/8" Lock Washers	6 - 3/8" Flat Washers	6 - 3/8" Flat Washers	6 - 3/8" Flat Washers
	6 - 3/8" Hex Nuts	6 - 3/8" Hex Nuts	6 - 3/8" Hex Nuts
	6 - 3/8" Lock Washers	6 - 3/8" Lock Washers	6 - 3/8" Lock Washers
	6 - 1/4" x 1/2" SS Carriage Bolts	6 - 3/8" Lock Washers	6 - 1/4" x 1/2" SS Carriage Bolts
	6 - 1/4" Self Locking Nuts	16 - Rivets	6 - 1/4" Self Locking Nuts
	6 - 3/4" Rubber Washers		6 - 3/4" Rubber Washers
			8 - Rivets

1. Remove the contents from the box and check for missing pieces or damage. If parts are missing or damaged, contact the original place of purchase. Read the instructions completely before beginning.
2. Place the 70731 bracket up to pinch weld on the vehicle, as shown in **Diagram 1**. Mark the spot to drill a 1/4" hole into the pinch weld. After the hole is drilled use (1) 1/4" x 3/4" HH bolt with As shown in **Diagram 2** drill another hole in the fender well to hold the bracket. Make sure the middle hole goes into a steel plate behind the fender well.
3. Attach mud flaps and weights as shown on page 2.

View of Pinch Weld & Bracket #70731

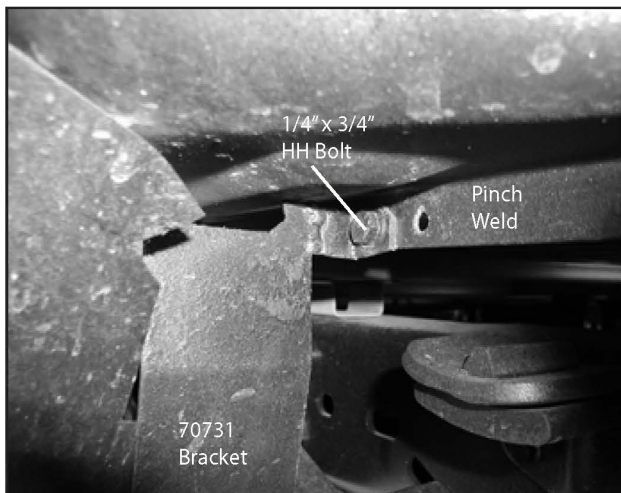


Diagram 1

View of Bracket #70731 & Mud Flap Attached

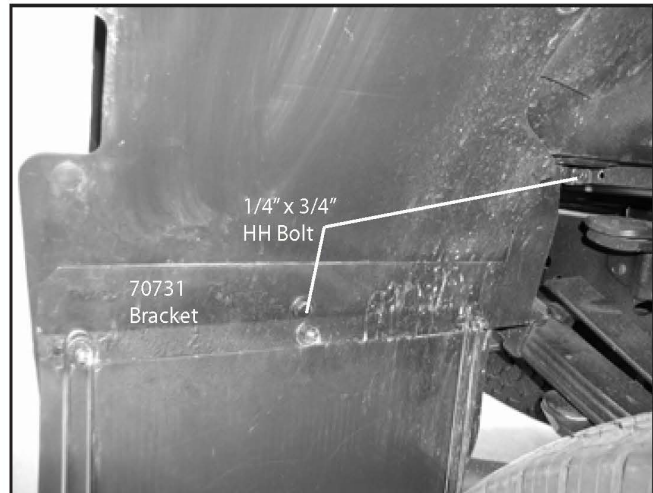


Diagram 2

Dually Mud Flap Set

Installation Instructions

70731 SET, S70731 SET,

D70731 SET, 70731

Ford super Duty Dually '11 - '15

4. **Mount the Mud Flaps only to the Brackets:** Using **Diagram 3**, mount the Mud Flaps to the bracket by positioning the flat side of mud flaps toward the tires and on the front side of the brackets. Position the holes on the top of the Mud Flaps over the holes on bracket. If the holes do not align you may have to drill additional holes in Mud Flaps. We recommend the head of the bolts be against the plastic shield and the nuts, washers face the tires. This allows the greatest amount of clearance between the bolts and the plastic shield on vehicle. Use (1) 5/16" x 1" HH bolts with (1) 5/16" flat washer, (1) 5/16" lock washer and (1) 5/16" hex nut per hole on the mud flap. Put the flat washer against the flap to ensure the rubber does not come off of bolt.
5. **Mount the Anti-sails and Stainless Weights:** Using **Diagram 4**, mount the Stainless Weights to the mud flap. Place mud flap on a smooth surface with the ridge up. Place the Stainless Weight onto the bottom of the mud flap and mark the holes to be drilled. Use a 1/4" drill bit to drill out the mud flap. Place (1) 1/2" rubber washer over each of the drilled holes. Place the Stainless Weights onto mud flap aligned with the drilled holes. The rubber washers will allow any dirt or water to drain out of the bottom of the mud flap. Place (1) 1/4" x 3/4" carriage bolts through the front of the stainless weight and (1) 1/4" flat washer and (1) 1/4" self locking nut on the back of the mudflap. Do this for all 6 holes on the stainless weights.
6. **Mount diamond #D718 or stainless #718 stiffeners to brackets and mud flaps:** Using **Diagram 5** and **Diagram 6**, place mud flap on a flat surface with ridged side face up. Place stiffeners onto the mud flap and align the three holes on mud flap with the three holes on stiffeners. Mark the mud flap to drill holes into mud flap for rivets. Use a 3/16" drill bit to drill mud flap. Attach the plate stiffener with (3) rivets with the washer against the rubber mud flap. Attach the diamond plate weight #D719 or stainless plate weight #719 with (3) rivets with the washer against the rubber mud flap.

View of Ridge Side of Mud Flap

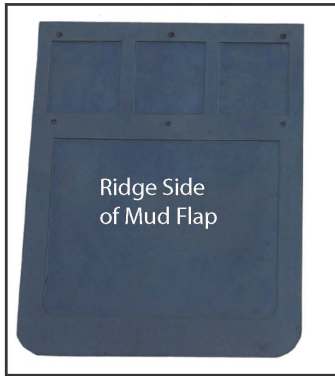


Diagram 3

View of Anti-Sail and Stainless Weight

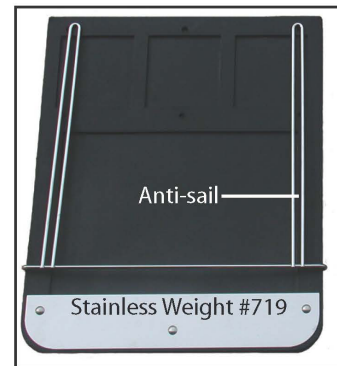


Diagram 4

View of Stainless Steel Stiffener and Weight



Diagram 5

View of Diamond Plate Stiffener and Weight



Diagram 6