

Any damaged or missing parts?

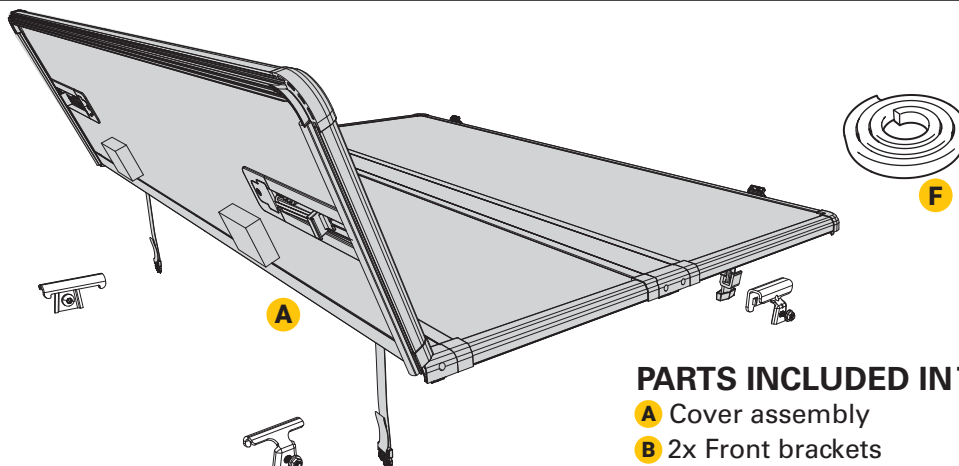
Parts will be shipped to you directly.

Call 855-427-4568, Mon - Fri, 8:00 a.m. - 6:00 p.m. EST

TOOLS REQUIRED

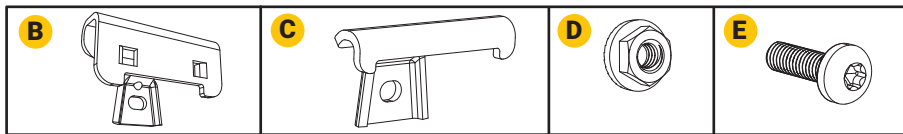
- 10mm wrench
- Torx tool-T-30

NOTE: It is important that all areas where the bed cover mounts are clean and free of debris prior to installing.

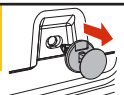


PARTS INCLUDED IN THE BOX

- A** Cover assembly
- B** 2x Front brackets
- C** 2x Rear brackets
- D** 4x Flanged lock nuts
- E** 4x Torx screws
- F** 1x Adhesive backed bulkhead seal



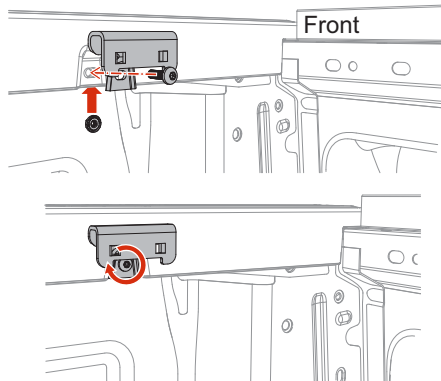
1



Before installing the latch brackets, first remove the factory clips from the front and rear bed cap recesses, on both sides. First pry the center of the clip out, then pry the entire clip out.

2

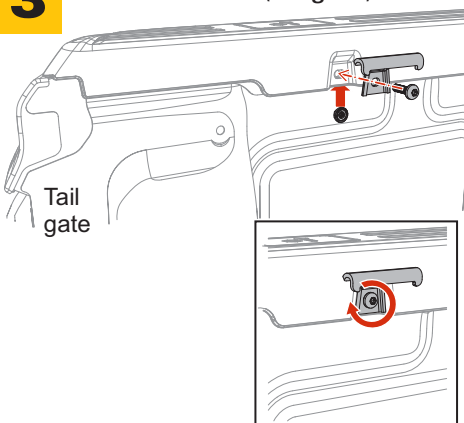
Install the front (cab) latch brackets.



Place the front (cab) latch bracket into the front recess in the truck bed rail. Thread the screw through the bracket, through the bed rail and into the nut. With a wrench and Torx tool tighten the screw. Install on both sides.

3

Install the rear (tailgate) latch brackets.



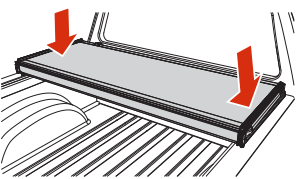
Place the rear (tailgate) latch bracket into the rear-most recess in the truck bed rail. Thread the screw through the bracket, through the bed rail and into the nut. With a wrench and Torx tool tighten the screw. Install on both sides.

4

Install the bulkhead seal per the instructions included with the seal. Be sure to follow the placement and prep instructions for the best adhesion and seal effectiveness.

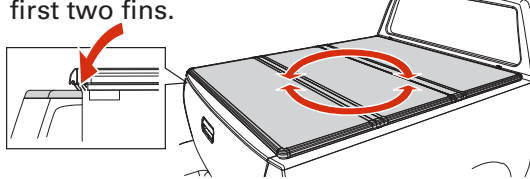
5

Place the folded, assembled bed cover over the cab end of the truck bed.



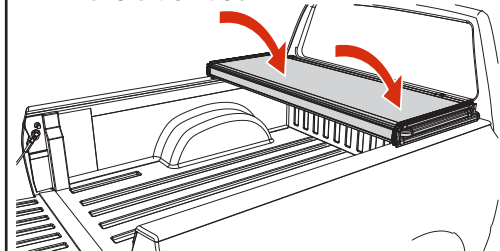
6

Unfold the bed cover fully and adjust the position over the truck bed for proper front (cab) and rear (tailgate) alignment. When positioned front and back, the tailgate seal should contact the tailgate with the first two fins.



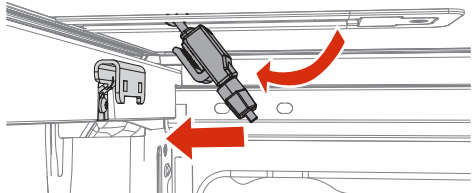
7

Carefully refold the bed cover without shifting its position on the truck bed.

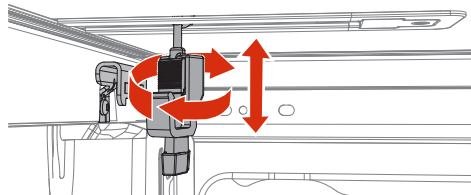


8

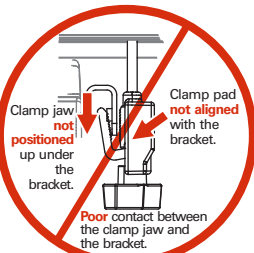
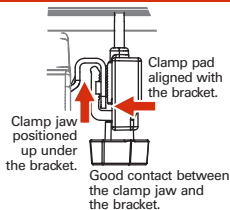
Slide the front (cab) clamp at an angle toward the bed rail and swing it down.



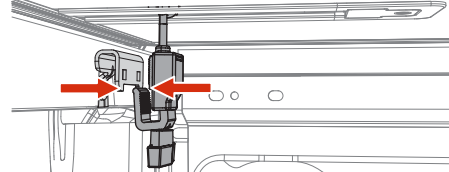
Rotate the body of the clamp up or down to match its position with the bracket.



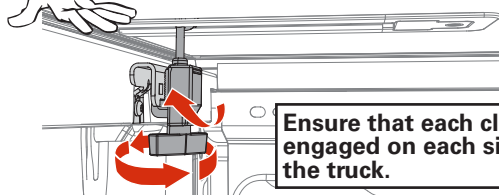
IMPORTANT



The optimal position of the clamp body is to match the bottom of the ridges to the bottom of the bracket.



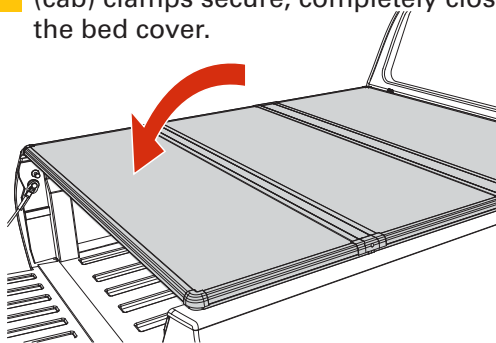
Swing the clamp under the bracket and tighten by hand. Push down on the cover while tightening to help the cover seal. DO NOT over tighten or use a wrench.



Ensure that each clamp is engaged on each side of the truck.

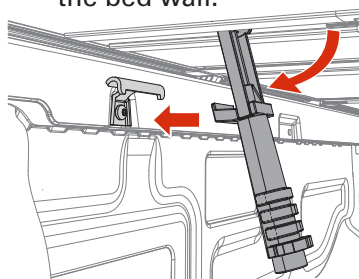
9

With the tailgate open and the front (cab) clamps secure, completely close the bed cover.



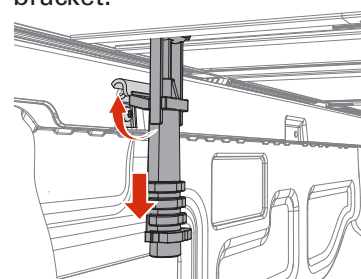
10

Lower the rear (tailgate) clamp and slide it out to the bed wall.



Ensure that each clamp is engaged on each side of the truck.

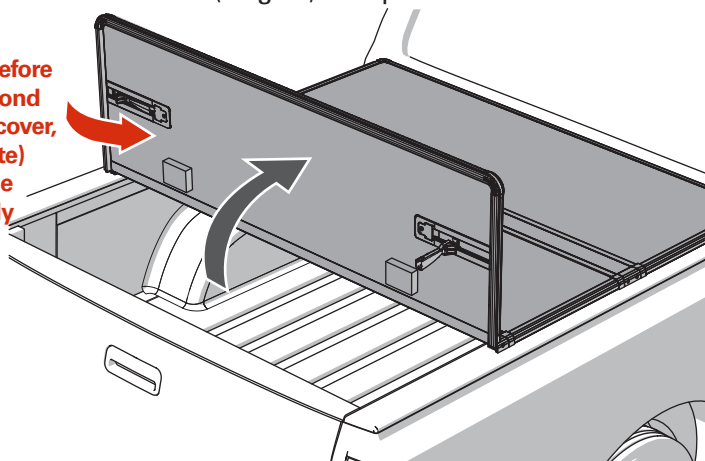
Pull the clamp down and hook it under the bottom edge of the rear bracket.



Opening the cover

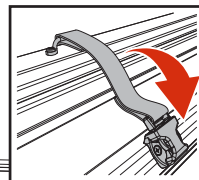
Pull down and release the rear (tailgate) clamps and fold the cover forward.

IMPORTANT: Before folding the second section of the cover, the rear (tailgate) clamps must be stowed securely into the rail.

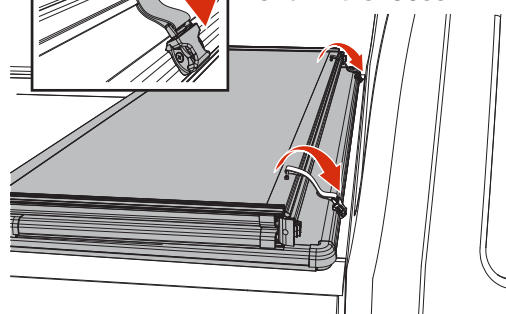


Securing the cover

To drive with the cover open, fold the cover forward to the cab and fasten BOTH straps in the middle section to the front rail.



Check that the straps are tight, and pull the strap end if it is loose.



IMPORTANT

Re-tighten the front/cab clamps after the first week of driving the vehicle. Also periodically check the clamps to ensure they are secure.

Closed/Extended Position – Bed cover must be completely secured by all four (4) clamps.

Open/Folded Position – Bed cover must be completely folded up (all panels) and secured at the cab with the provided buckles straps.

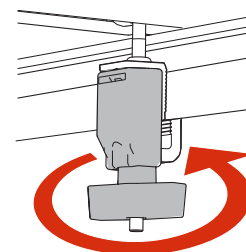
Do NOT drive with the bed cover in a partially open position.



Do NOT allow the vehicle to be towed backwards without first removing the cover from the vehicle.

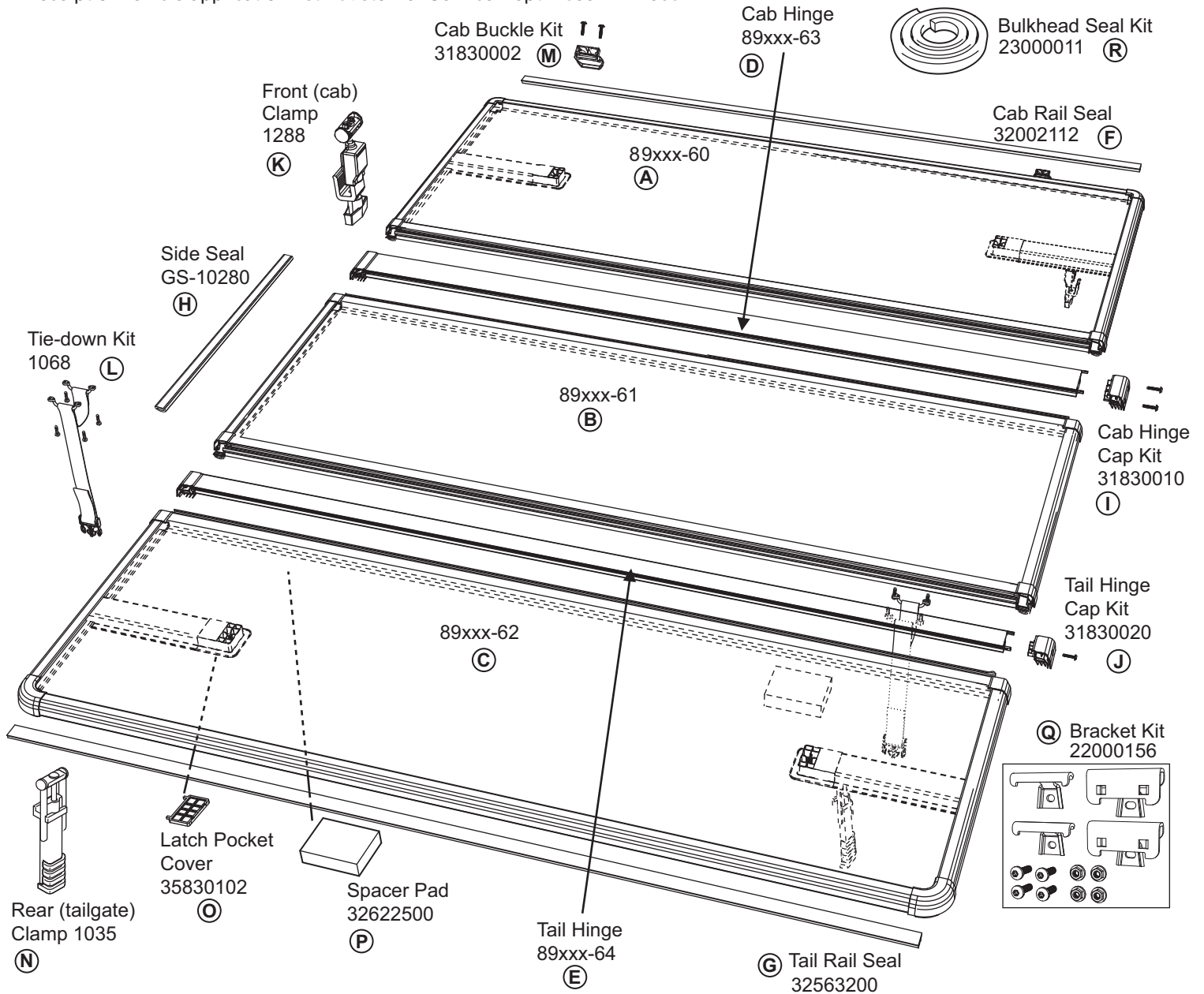


Remove any snow or foreign matter before folding the bed cover.



Replacement Parts

NOTE: To order replacement parts, it is best to contact our Customer Service Department for assistance to ensure that you are getting the correct part for your vehicle application. When ordering, xxx represents the 3-digit suffix as referenced on the sales receipt or vehicle application list. Customer Service Dept. - 855-427-4568.



Call Out	Title	Part Number	Description	Qty
A	Cab Panel	89xxx-60	Cab Panel Assembly	1
B	Mid Panel	89xxx-61	Mid Panel Assembly	1
C	Tail Panel	89xxx-62	Tail Panel Assembly	1
D	Cab Hinge	89xxx-63	Cab Hinge Assembly	1
E	Tail Hinge	89xxx-64	Tail Hinge Assembly	1
F	Cab Rail Seal	32002112	Weatherstrip- Cab	1
G	Tail Rail Seal	32563200	Weatherstrip- Tail	1
H	Side Seal	GS-10280	Black EPDM Sponge with 1/2" ST Adhesive .375 x .375	1
I	Cab Hinge Cap Kit	31830010	Cab Hinge Cap & Fasteners	1
J	Tail Hinge Cap Kit	31830020	Tail Hinge Cap & Fasteners	1
K	Front (Cab) Clamp	1288	Front Pinch Clamp	1
L	Tie-down Kit	1068	Strap Tie-down Assembly	1
M	Cab Buckle Kit	31830002	Female Buckle & Fasteners	1
N	Rear (Tailgate) Clamp	1035	Rear Clamp Assembly	1
O	Latch Pocket Cover	35830102	End Cap Snap Access Cover	1
P	Spacer Pad	32622500	Spacer Pad 2"	1
Q	Bracket Kit	22000156	Bracket Kit for Front (Cab) and Rear (Tailgate)	1
R	Bulkhead Seal Kit	23000011	Bulkhead and instructions	1

LIMITED WARRANTY

WARRANTY COVERAGE

This truck bed cover is warranted against defects in materials or workmanship as follows. This warranty is void if the product has been damaged in an accident, or due to neglect, unforeseeable use, improper installation, improper servicing, or other cause not arising out of defects in material or workmanship.

The truck bed cover carries a limited warranty for five (5) years from the original date of purchase, subject to the terms below.

WARRANTY IS NOT TRANSFERABLE

The warranty is to the initial owner purchasing the truck bed cover and it is not transferrable to a subsequent end user. Proof of purchase may be required to enforce these warranty rights.

WARRANTY CONDITIONS

Failure to follow these care and use instructions will void the warranty.

- Clean with mild automotive soap and water only.
- Cover must be secured at all points when vehicle is in motion. When not fully extended, cover must be completely folded up and secured at the cab with the provided buckle straps and tethers attached. Do NOT drive with the bed cover in a partially open position.
- Check all clamps and retention mechanisms for tightness after a week of driving following installation (or re-installation) of the cover and periodically thereafter.
- Before opening, cover must be free of all foreign materials including snow and ice.
- Do NOT tow your vehicle from the rear with the cover on your vehicle. If towing from the rear is required, the cover MUST be removed from the vehicle and properly stored.

WARRANTY PERFORMANCE

If all warranty conditions are met, a defective truck bed cover or hardware component will either be repaired or replaced (at our option). We reserve the right, for any warranty, to substitute a newer model or bed cover having similar form and function, to offer a warranty discount on an entire replacement system, and/or provide remedies other than those mentioned in this document.

WARRANTY PROCESS

A Return Authorization number must be obtained from our Customer Service Department prior to returning any product. We may require the original item to be returned postage prepaid for final determination. Shipping charges will apply for any repair or replacement. Other than postage or shipping charges, no charge will be made for repair or replacement under this warranty.

This warranty gives you specific legal rights. As an owner, you may also have additional rights and remedies under the laws of your state.

WARRANTY REGISTRATION

Warranty registration must be on file and/or proof of original purchase (detailed and dated receipt) required for warranty to be effective.

Register online at <https://realtruck.com/warranty-registration>

**REGISTER
YOUR
WARRANTY
ONLINE**



SOMETHING DAMAGED? MISSING PARTS?

CALL US FIRST
855-427-4568

WE CAN HELP YOU QUICKLY AND EASILY OVER THE PHONE

Experienced Customer Service staff are available
to answer all your truck bed cover questions

CUSTOMER SERVICE HOURS

8:00 a.m. TO 6:00 p.m. EST, MONDAY - FRIDAY

Truck bed cover model: _____

Purchase date: _____

Lot code: _____

Lot code can be found on the underside of cover.