

# Installation Instructions

Eibach Springs, Inc. • 264 Mariah Circle • Corona, California 92879-1751 • USA • Tech Support 800-222-8811 Ext 114

## Pro-Damper – # E60-51-017-01-01

Contents	Description	Part Number	Qty
	Damper Assy.	28108.8002.1	1
	Aluminum Bump Stop Cap	8000086	1
	Nylock Nut	H63075400	1
	Information Kit	EPAK	1
	Installation Instructions	28108.8002INST	1



### NOTES: Read All Instructions Before Beginning Installation

1. Park vehicle on level surface and set emergency brake. Raise and support the vehicle with safety stands. Refer to factory manual for proper location of safety stands.
2. Power washing your chassis will make the installation cleaner.
  - **NOTE:** Never work on or under a vehicle unless it is properly supported by safety stands.
3. Loosen and remove the OE shock per the factory recommended removal procedure.
4. Installation of the Eibach Pro Damper shock should be done in the reverse order of removal.



## Shock Instructions and Safety Tips

---

### Installation

#### **IMPORTANT NOTES:**

- Any time you are working under a vehicle, be sure to use the proper jack stands and tire chocks to prevent any shifting or slipping of the car. Never use a jack only to support the vehicle while changing shocks.
- Inspect shock brackets or mounting points before installation to make sure they are not broken or bent.
- Do not attempt to disassemble these shocks. Return damaged shocks to EIBACH SPRINGS for any necessary service or repairs.

#### **PLEASE READ THESE INSTRUCTIONS ENTIRELY BEFORE BEGINNING**

- Proper installation is a must to realize the maximum performance improvements. Follow these steps carefully.

#### **USE THE RIGHT SHOCK FOR YOUR VEHICLE**

- Use EIBACH SPRINGS shocks only for the applications for which they are listed. Each shock is specifically tuned for that vehicle's weight, suspension geometry, and other characteristics.
- Compare original shock mounting style and hardware with your new shocks before starting installation. If original hardware is not reusable, it should be replaced with OEM quality and style hardware.
- Shocks are tuned to vehicle manufacturer's recommendation for tire pressure, not necessarily the max inflation pressure listed on sidewall of tire.

#### **IMPORTANT INSTALLATION NOTES**

- If you are uncertain of proper shock installation procedure, please consult appropriate service manual. Torque all fasteners to vehicle manufacturer's specs. Note: On Post Mount shocks, finger tighten nut to achieve zero clearance between the retaining washers and the bushings, then continue to tighten approximately 5-6 turns to achieve proper pre-load. Bushings should be slightly bulged. Secure with Jam Nut. On some vehicles, nut may bottom out on stud before 5-6 turns, which is proper for those applications.
- OEM mounting hardware may be either standard or metric. Make sure you have the proper tools before starting. Do not interchange hardware. Use new mounting hardware provided with your shocks, and re-use original mounting hardware in all other locations.
- EIBACH SPRINGS shocks have a high-pressure nitrogen gas charge and may come with a restraining strap, which holds the shock in a compressed position. To ease most installations, leave the strap on until you have secured one end of the shock, then cut the strap and quickly guide the other end of the shock into position as it expands. Strap must be cut before some installations, such as when strap goes around post.
- Wire ties are provided to secure the shock boot to the shock body. On some installations (especially where the shock must pass through a hole in the lower control arm), it is necessary to put the wire tie on after the shock is installed.
- After installing shocks and before driving vehicle, check for clearance of exhaust, brake or gas lines, electrical wiring, etc.
- After installation, drive the vehicle cautiously for the first few miles to develop a feel for the improved handling and ride quality. After 10 miles, inspect installation, re-check torque on all fasteners, and verify adequate component clearance.



# Installation Instructions

Eibach Springs, Inc. • 264 Mariah Circle • Corona, California 92879-1751 • USA • Tech Support 800-222-8811 Ext 114

## *Pro-Damper* – # E60-51-017-01-10

**Note: The OEM spring perch will have to be removed from the OEM strut assembly and installed onto the Eibach Pro Truck Damper**

Contents	Description	Part Number	Qty
	Damper Assy.	28108.8001.1	1
	Spring Perch Spacer	8000592	1
	Nylock Nut	H63025700	1
	Information Kit	EPAK	1
	Installation Instructions	28108.8001INST	1



### **NOTES: Read All Instructions Before Beginning Installation**

1. Park vehicle on level surface and set emergency brake. Raise and support the vehicle with safety stands. Refer to factory manual for proper location of safety stands.
2. Power washing your chassis will make the installation cleaner.
  - **NOTE:** Never work on or under a vehicle unless it is properly supported by safety stands.
3. Loosen and remove the OE shock per the factory recommended removal procedure.
4. Installation of the Eibach Pro Damper shock should be done in the reverse order of removal.



## Shock Instructions and Safety Tips

---

### Installation

#### **IMPORTANT NOTES:**

- Any time you are working under a vehicle, be sure to use the proper jack stands and tire chocks to prevent any shifting or slipping of the car. Never use a jack only to support the vehicle while changing shocks.
- Inspect shock brackets or mounting points before installation to make sure they are not broken or bent.
- Do not attempt to disassemble these shocks. Return damaged shocks to EIBACH SPRINGS for any necessary service or repairs.

#### **PLEASE READ THESE INSTRUCTIONS ENTIRELY BEFORE BEGINNING**

- Proper installation is a must to realize the maximum performance improvements. Follow these steps carefully.

#### **USE THE RIGHT SHOCK FOR YOUR VEHICLE**

- Use EIBACH SPRINGS shocks only for the applications for which they are listed. Each shock is specifically tuned for that vehicle's weight, suspension geometry, and other characteristics.
- Compare original shock mounting style and hardware with your new shocks before starting installation. If original hardware is not reusable, it should be replaced with OEM quality and style hardware.
- Shocks are tuned to vehicle manufacturer's recommendation for tire pressure, not necessarily the max inflation pressure listed on sidewall of tire.

#### **IMPORTANT INSTALLATION NOTES**

- If you are uncertain of proper shock installation procedure, please consult appropriate service manual. Torque all fasteners to vehicle manufacturer's specs. Note: On Post Mount shocks, finger tighten nut to achieve zero clearance between the retaining washers and the bushings, then continue to tighten approximately 5-6 turns to achieve proper pre-load. Bushings should be slightly bulged. Secure with Jam Nut. On some vehicles, nut may bottom out on stud before 5-6 turns, which is proper for those applications.
- OEM mounting hardware may be either standard or metric. Make sure you have the proper tools before starting. Do not interchange hardware. Use new mounting hardware provided with your shocks, and re-use original mounting hardware in all other locations.
- EIBACH SPRINGS shocks have a high-pressure nitrogen gas charge and may come with a restraining strap, which holds the shock in a compressed position. To ease most installations, leave the strap on until you have secured one end of the shock, then cut the strap and quickly guide the other end of the shock into position as it expands. Strap must be cut before some installations, such as when strap goes around post.
- Wire ties are provided to secure the shock boot to the shock body. On some installations (especially where the shock must pass through a hole in the lower control arm), it is necessary to put the wire tie on after the shock is installed.
- After installing shocks and before driving vehicle, check for clearance of exhaust, brake or gas lines, electrical wiring, etc.
- After installation, drive the vehicle cautiously for the first few miles to develop a feel for the improved handling and ride quality. After 10 miles, inspect installation, re-check torque on all fasteners, and verify adequate component clearance.





# Installation Instructions

Eibach Springs, Inc. • 264 Mariah Circle • Corona, California 92879-1751 • USA • Tech Support 800-222-8811 Ext 114

## All-Terrain Lift Kit – # 28108.980

2011-13 Jeep Grand Cherokee, 2WD/4WD, V6 3.6L, V8 5.7L  
(Excluding vehicles with Tow Package & SRT-8)

## All-Terrain Lift Kit – # 28107.980

2011-13 Jeep Grand Cherokee, 2WD/4WD, V6 3.6L, V8 5.7L  
For vehicles with Tow Package (Excluding SRT-8)

Kit Contents	Description	Part Number	Qty
	Front Damper	28108.8001	2
	Rear Damper (non tow package)	28108.8002	2
	Rear Damper (tow package only)	28107.8002	2
	Front Spring	28108.601	2
	Rear Spring	28108.602	2
	Information Kit	EPAK	1

### NOTES: **Read All Instructions Before Beginning Installation**

1. Park vehicle on level surface and set emergency brake. Raise and support the vehicle with safety stands. Refer to factory manual for proper location of safety stands.
2. Power washing your chassis will make the installation cleaner.
  - **NOTE:** Never work on or under a vehicle unless it is properly supported by safety stands.
3. Follow the manufacturers recommended procedure for removal and installation of the front and rear dampers.





### Front Spring Perch Installation (V8 only)

Remove the OE spring perch from the OE strut and install it onto the Eibach Pro Damper. **Note: The provided spacer is for use on V8 equipped vehicles only.** (See Photos 1, 2 & 3)



Photo 1



Photo 2

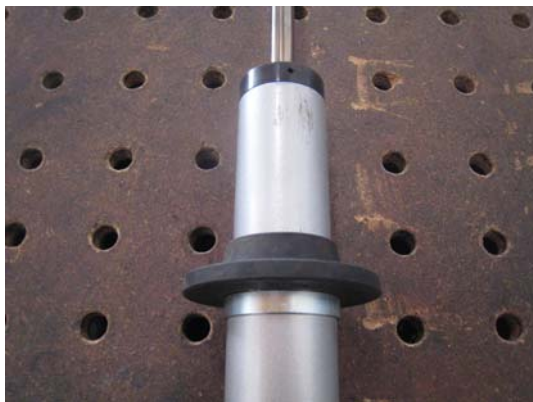


Photo 3

**Note: The Spacer must be installed with the counterbore facing downward over the shoulder. Improper installation will cause permanent damage to the shock.** (See Photo 2)

### Front Spring Perch Installation (V6 only)

Remove the provided spacer from the Eibach Pro Damper, then, install the OE spring perch onto the Pro Damper as shown. **Note: The provided spacer must be removed for use on V6 equipped vehicles.** (See Photos 4, 5 & 6)

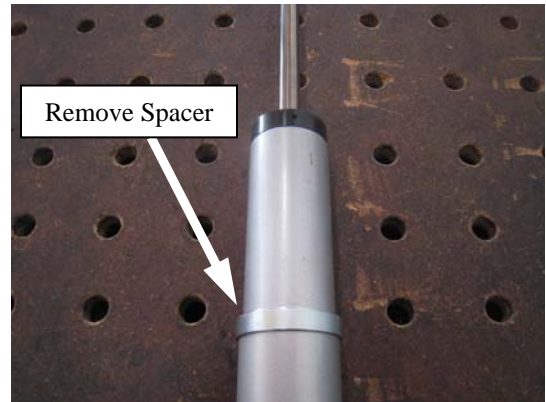


Photo 4



Photo 5

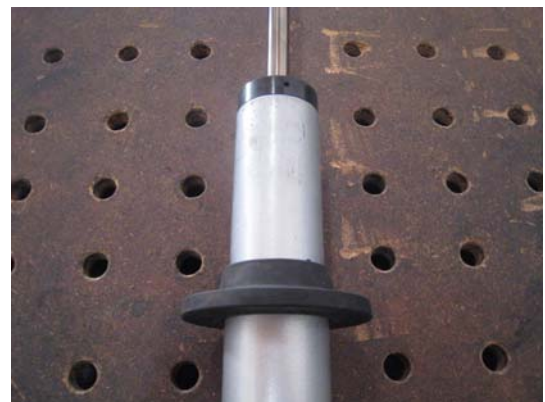


Photo 6

## General Instructions and Safety Tips

---

### Installation

- Eibach Suspension Spring sets should only be installed by a qualified licensed mechanic experienced in the installation and removal of suspension springs. We also recommend that your Eibach Suspension Springs be installed by a dealer experienced in the care and repair of the specific type of vehicle in which the Eibach Suspension Springs are to be installed.
- When the installation facility attempts to install the Eibach Suspension Spring set, they should always remember to support your (the consumer) vehicle with jack stands. **NO ONE SHOULD EVER WORK UNDER A VEHICLE SUPPORTED ONLY WITH A JACK!** When re-installing, (if necessary) all parts should be cleaned, examined and replaced. Upon completion, the factory torque settings of all nuts, bolts and the overall installation should be re-checked.
- Before Disassembly it is important to mark the orientation of the upper perch with respect to the lower perch before disassembly. This orientation must remain the same with the installation of the Pro Kit springs. Noise may result if this procedure is not performed correctly.
- Installation and use of an Eibach Suspension Spring set **NOT DESIGNED FOR YOUR VEHICLE** may result in personal injury or property damage. Always consult your Eibach dealer or a qualified licensed mechanic experienced in installing suspension springs if you are unsure about the suitability of a particular suspension spring set for your vehicle.
- Removal and installation of suspension springs can be dangerous if you do not take all the OEM recommended safety precautions and use the proper tools. This process should only be performed by a qualified technician. Springs under compression contain stored energy that may cause severe property damage and/or injury if not handled properly.
- Your car may have certain accessories or features which require inspection and/or adjustment after installation of your Eibach Suspension Spring set. The qualified mechanic installing your Eibach Suspension Springs should also inspect and where necessary, adjust:
  - Self-leveling system, if your car is so equipped
  - Wheel alignment such as camber, caster, toe in and toe out (may require additional components)
  - Aftermarket tire and/or wheel fender clearance
  - Brake line clearance and attachment
  - The sensors on your brake anti-locking, anti-skid and stability control systems

Failure to adjust these items may result in systems malfunction and cause serious injuries.

---

### Safety

- Eibach Suspension Springs may change the way your vehicle drives, especially through curves. Drive slowly until you (the consumer) know and become accustomed to the new driving/handling characteristics of the suspension enhanced vehicle. Always obey posted speed limits.
- Certain changes in the way the vehicle drives or rides may indicate that the Eibach Suspension Springs have not been fitted correctly, have become displaced, or are in need of replacement. If the vehicle does not stand "even" when parked, vibrates at highway speeds, becomes misaligned or does not provide a smooth ride, you (the consumer) should have the Eibach Suspension Springs inspected by a qualified licensed mechanic experienced in the installation of suspension springs. Continued use of defective or misfit Eibach Suspension Springs could result in personal injury or property damage.
- Your Eibach Suspension Springs were manufactured and tested under strict quality control standards. However, under certain circumstances, **ALL SPRINGS CAN BREAK**. To avoid damage or breakage, suspension springs should not be subjected to:
  - Excessive speeds: Maximum legal speeds should be observed at all times and never exceeded.
  - Excessive weight: Vehicle manufacturers suggested loads should be observed at all times and never exceeded.
  - Undue strain caused by off-road or continued use on poorly maintained or un-maintained roads.
  - Undue strain caused by unusually sharp and/or quick maneuvering or steering.