

# Installation Instructions

Eibach Springs, Inc. • 264 Mariah Circle • Corona, California 92879-1751 • USA • Tech Support 800-222-8811 Ext 114



## Anti-Roll-Kit # 4051.310

Honda, Civic, 2 & 4 door, 2001-2003

Kit Contents	Description	Part Number	Qty
	Front Bar	4051.320F	1
	Anti-Roll Hardware Kit	4051.310HK	1
	Information Kit	EPAK	1
	Instructions	4051.310INST	1

### NOTES: Read All Instructions Before Beginning Installation

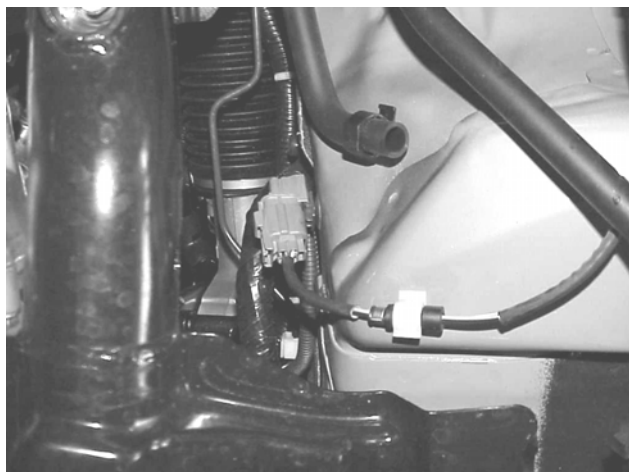
- Only qualified mechanics experienced in the installation and removal of suspension components should perform this installation.
- Use of a hoist and screw jack is highly recommended and will substantially reduce installation time.
- Installation time: Is approximate 1.5 hours with the use of a hoist.
- Never work on or under a vehicle unless it is properly supported by safety stands.
- Tire Rotation: In order to increase the life of your tires, it is recommended to rotate your tires every 3,000 miles.

### Additional Eibach Components Available For Your Car

Eibach Kits	Part Number	Description	Front	Rear
<i>Pro-Kit</i>	4051.140	High Performance Handling	1.0 In.	1.0 In.
<i>Sportline</i>	4.5140	Extreme Performance	1.4 In.	1.4 In.
<i>Alignment Kit</i>	5.67230K			+/- 3.00 °
<i>Alignment Kit</i>	5.81260K			+/- 1.75 °

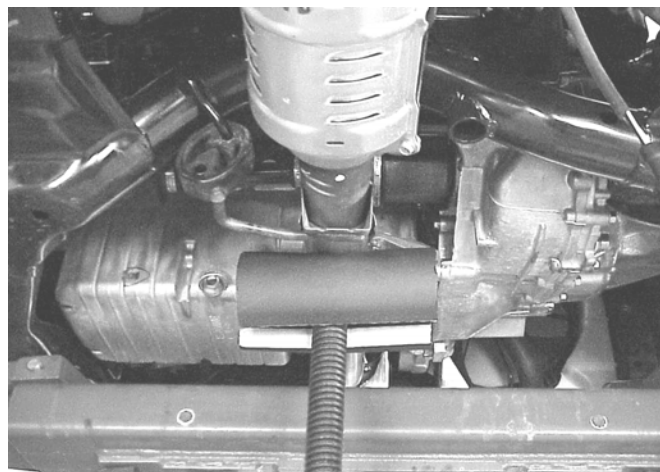
#### FACTORY FRONT BAR REMOVAL

1. Safely raise and support the vehicle.
2. Disconnect the oxygen sensor wire.  
(See Photo 1)



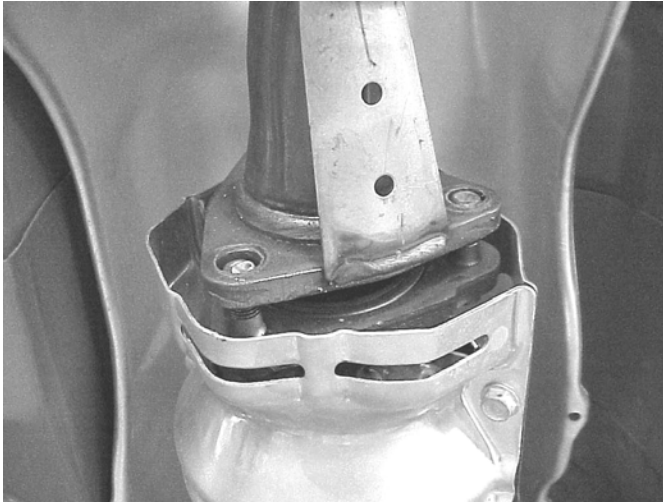
(Photo 1) Oxygen sensor wire

3. Next, disconnect the exhaust.
4. Support the catalytic converter with a jack.  
(See Photo 2)



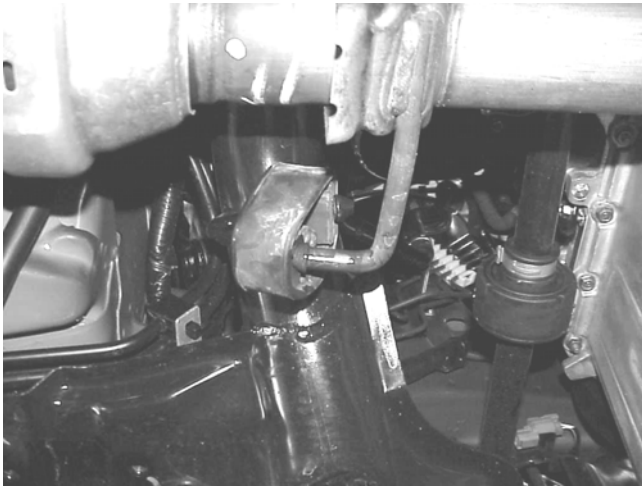
(Photo 2) Supporting the catalytic converter

- Using a 14 mm socket, remove the three catalytic converter to exhaust flange nuts. (See photo 3)



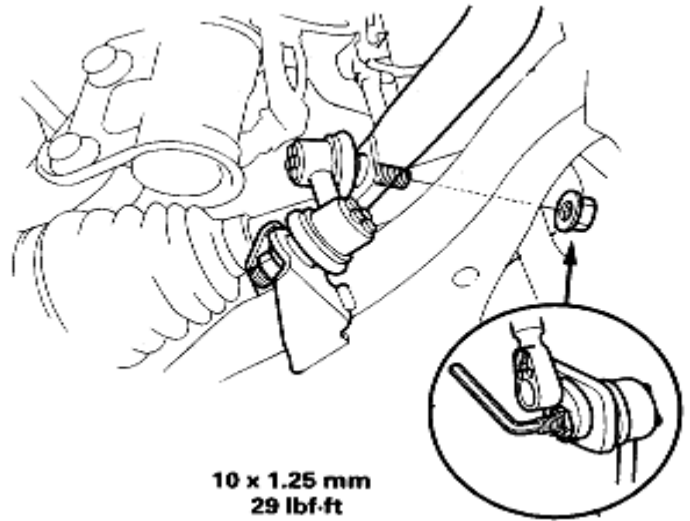
(Photo 3) Catalytic converter exhaust flange

- Remove the rubber exhaust doughnuts. (See Photo 4)



(Photo 4) Exhaust doughnuts

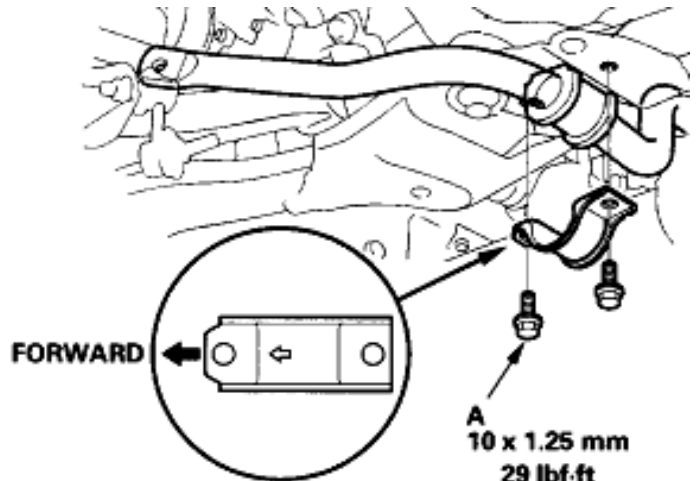
- Now separate the exhaust, allowing the rear section hang.
- Remove the two factory Anti-Roll-Bar end link nuts. (See Illustration 5)



10 x 1.25 mm  
29 lbf-ft

(Illustration 5) Front factory end link

- Next remove both Anti-Roll-Bar bushing brackets with a 14mm socket. (See Illustration 6)



A  
10 x 1.25 mm  
29 lbf-ft

(Illustration 6) Anti-Roll-Bar bushing bracket

- Maneuver the bar out and towards the exhaust flange, separating the exhaust enough so the bar can be completely removed from the vehicle.

## ***EIBACH* FRONT BAR INSTALLATION**

- Apply the supplied lubricant to the inside of the new front bushings.
- The ***Eibach*** front bar can be installed in the reverse order.
- Make sure that you install the new bushing on the ***Eibach*** bar with the "cut" portion towards the rear of the vehicle.

# Installation Instructions

Eibach Springs, Inc. • 264 Mariah Circle • Corona, California 92879-1751 • USA • Tech Support 800-222-8811 Ext 114



## Anti-Roll-Kit # 4051.312

Honda, Civic, 2 & 4 door, 2001-2003

Kit Contents	Description	Part Number	Qty
	Rear Bar	4051.320R	1
	Anti-Roll Hardware Kit	4051.312HK	1
	Information Kit	EPAK	1
	Instructions	4051.312INST	1

### NOTES: Read All Instructions Before Beginning Installation

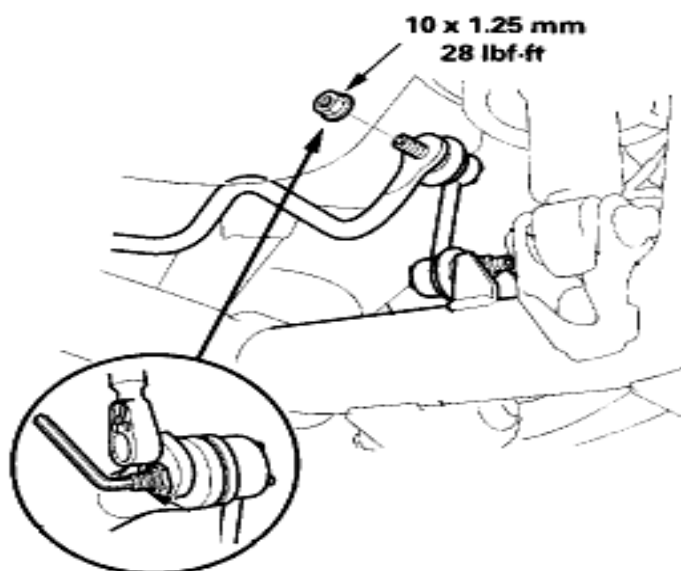
- Only qualified mechanics experienced in the installation and removal of suspension components should perform this installation.
- Use of a hoist and screw jack is highly recommended and will substantially reduce installation time.
- Installation time: Is approximate 1.5 hours with the use of a hoist.
- Never work on or under a vehicle unless it is properly supported by safety stands.
- Tire Rotation: In order to increase the life of your tires, it is recommended to rotate your tires every 3,000 miles.

### Additional Eibach Components Available For Your Car

Eibach Kits	Part Number	Description	Front	Rear
<i>Pro-Kit</i>	4051.140	High Performance Handling	1.0 In.	1.0 In.
<i>Sportline</i>	4.5140	Extreme Performance	1.4 In.	1.4 In.
<i>Alignment Kit</i>	5.67230K			+/- 3.00 °
<i>Alignment Kit</i>	5.81260K			+/- 1.75 °

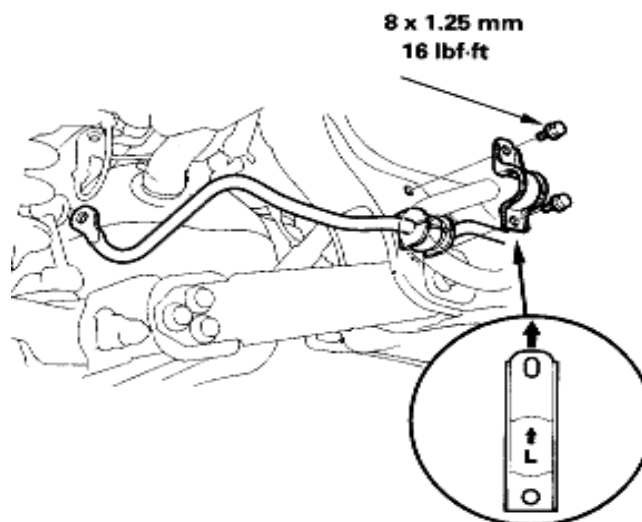
#### FACTORY REAR BAR REMOVAL

1. Remove the two end link nuts with a 14mm socket. (See Illustration 7)



(Illustration 7) Rear factory end link

2. Remove the Anti-Roll-Bar frame mount bracket with a 12mm socket. (See Illustration 8)



(Illustration 8) Factory rear frame mount bracket

3. Remove the bar.

## ***EIBACH* REAR BAR INSTALLATION**

1. Apply the supplied lubricant to the inside of the new front bushings.
2. The ***Eibach*** rear bar can be installed in the reverse order.
3. Make sure that you install the new bushing on the ***Eibach*** bar with the "cut" portion towards the rear of the vehicle.