



Installation Instructions

Bolt-On/Rugged Look Fender Flares

Chevy Silverado 1500 (23-On) FIT-FF990

Important: Please read instructions entirely before installing this product.

Hardware Included	QTY
Extrusion	36ft
U-CLIP .6mm	6
Large-CLIP .9mm	4
Black Spacer	2

Hardware Included	QTY
Alcohol Towlette	4
Barrel Nut	2
SCRW-M5X18MM	2

Bolt Kit Included	QTY
Nuts	44
Torx drive Bolts	44

Ensure that both left- and right-hand Fender Flares suit the profile of the vehicle. Note the areas where the Fender Flares comes into contact with the vehicle. NOTE: Before fitting Fender Flares remove any moldings, strips or existing flares from the wheel arch. If there is a body side molding, mark where the molding is to be cut, alternatively the Fender Flare can be cut to go around the molding. Be sure to allow enough room for the extrusion. **No drilling of vehicle is required for Trox drive bolts and nuts.**

***PRIOR TO ANY PAINTING & INSTALLATION, PRODUCT SHOULD BE THOROUGHLY INSPECTED FOR ALL COMPONENTS LISTED ABOVE. PRODUCT SHOULD ALSO BE TEST FITTED PRIOR TO ANY PAINTING & INSTALLATION. PLEASE CONTACT EGR Inc. IF YOU HAVE ANY FITMENT QUESTIONS AND OR MISSING COMPONENTS.**
FOR RUGGED FLARES, INSTALL WILL START AT STEP 2
IF FLARES ARE PURCHASED PAINTED, INSTALL WILL START AT STEP 4 AND STEP 13

PAINTING INSTRUCTIONS – If Fender Flares are being painted; do not install edge extrusion until painting is complete. Prior to painting, clean all surfaces to be painted using clean water and a mild detergent, do not use lacquer thinner or any solvent-based products. Wipe completely dry. Best results will be achieved by wiping the areas to be painted with a tack rag just prior to painting. Most automotive paints can be applied directly to the Fender Flares; however some may require a primer (check paint manufacturer specifications). Good adhesion will be achieved without sanding. Select a paint (and primer if necessary) that is suitable for rigid plastics PMMA (Acrylic). If using a paint system that requires baking, do not expose the product to temperatures above 70°C (158°F). Do not fit the extrusion or any of the hardware to the Fender Flares until the paint is completely dry.

Due to variations in installation, use, climate and other un-intended anomalies, there is potential for dirt or debris to become trapped between the fender flares and body panels. EGR recommends to the end user to check or clear the debris every few months to avoid any wear between the fender flares and vehicles. EGR parts are designed to fit snugly to the sheet metal and provide the best defense against such events. However, should the parts not be installed correctly, or used in a manner not consistent with the intended design, EGR will not warrant any damage to the parts or the vehicle.



STEP 1: Attach the bolts and nuts to each Fender Flare using a 3/16" Allen key/Trox and a 1/2" wrench/socket. (wrench /socket and Allen key not supplied). Ensure inside of Fender Flares where the rubber seal is attached is clean, using the alcohol wipes provided. Wipe away any residue with a dry clean cloth.



STEP 2: Attach the included rubber seal to the Fender Flares. Peel back 2" of the adhesive backing and position on the Fender Flare. Attach the seal to the Fender Flare, peeling back a few inches at a time. Ensure pressure is used to secure rubber seal to Fender Flare edge. Attach rubber seal along all areas the Fender Flare contacts the vehicle body.

For Technical Support/Warranty Information please call 800-757-7075

EGR Inc., 4000 East Greystone Drive, Ontario, CA 91761



Installation Instructions

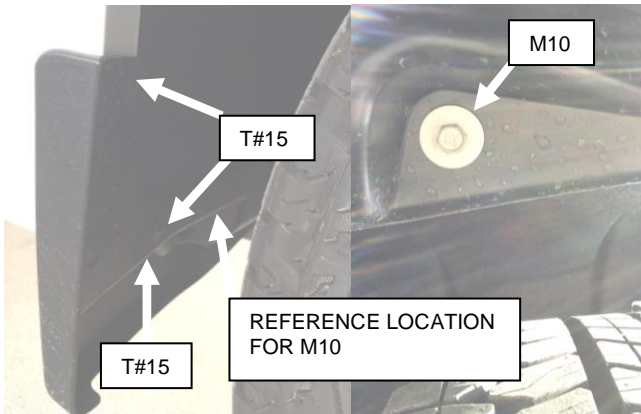
Bolt-On/Rugged Look Fender Flares
Chevy Silverado 1500 (23-On) FIT-FF990



STEP 3: Trim excess rubber seal and discard.



STEP 4: Clean the body areas where the Fender Flares will make contact. Ensure fenders are dry prior to install. Turn tires outward for Fender Flare installation.



STEP 5: For models with front factory mud guards, remove the (3) #15 Torx head screws at the upper and lower screw locations and (1) M10 socket at the underside location indicated above, maintain #15 Torx head screws for re-install. Retain factory mudguards for later use if required, fender flares require the mud guards to be removed.



STEP 6: Using #15 Torx, proceed to remove the factory screws at the locations noted above. Retain for re-use in steps to follow. Please note: In the image above the mud flap has been removed.

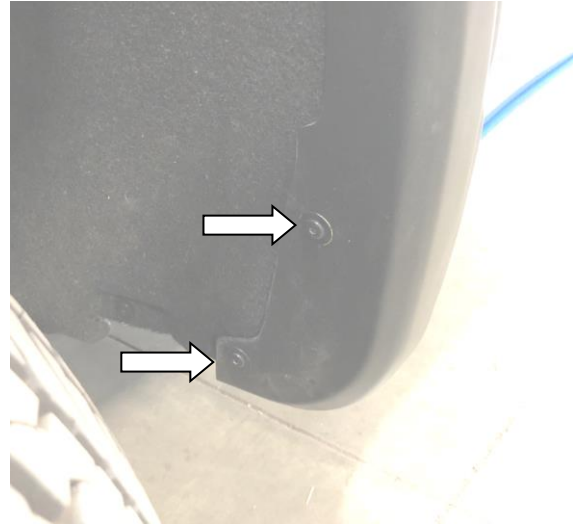
For Technical Support/Warranty Information please call 800-757-7075

EGR Inc., 4000 East Greystone Drive, Ontario, CA 91761



Installation Instructions

Bolt-On/Rugged Look Fender Flares
Chevy Silverado 1500 (23-On) FIT-FF990



STEP 7: Place Fender Flare on the vehicle into the position of best fit. Note where the slot in the Fender Flare aligns with the factory threaded holes on the vehicle at the noted positions above. Remove Fender Flare and insert the tab of the large clip into the slotted hole of the Fender Flare as shown above.

STEP 8: Place Fender Flare back on the vehicle into the position of best fit. Peel back 2 inches of the red tape liner on the fender flare extrusion at both ends, ensure liner is on the outside of part (ref to step 10). Using #15 Torx head screwdriver re-install previously removed factory mudguard screws (x2) and the (2) top center screw locations where large clips are used.



STEP 9: Install the Barrel Nut over the inner bumper panel at the slot location in the front of the fender flare. Align the slot in the fender flare over the hole in the Extruded U-Nut. Mark this location on the inner bumper panel with a grease pencil. Use a 1/4 " drill bit to drill the bumper panel at the previously marked location. Install the Extruded U-Nut over the drilled hole location flat side facing the wheel well. Slide the spacer between the inner side of the fender flare, large flat side facing the wheel well and center over the hole in the Extruded U-Nut. Use supplied M5 x 18 screw and Install through the slot of the fender flare, spacer and threaded hole of the Extruded U-Nut. Apply inward pressure on fastening point and tighten screw, ensure the screw engages through both sides of the speed nut.

For Technical Support/Warranty Information please call 800-757-7075

EGR Inc., 4000 East Greystone Drive, Ontario, CA 91761



Installation Instructions

Bolt-On/Rugged Look Fender Flares
Chevy Silverado 1500 (23-On) FIT-FF990



STEP 10: Starting at the front of the Fender Flare, carefully remove tape liner from extrusion a few inches at a time. Ensure extrusion is not tucking into flare and sits flush neatly against the fender body. Apply forward pressure to adhere the extrusion along the edge of entire length of Fender Flare once extrusion liner is removed. Ensure all fixing points are tight and secure and that the extrusion is flush neatly against the vehicle body. Repeat install steps for the opposite side.

ACTUAL PART MAY DIFFER FROM PICTURE

REAR FENDER FLARE INSTALLATION



STEP 11: Attach the bolts and nuts to each Fender Flare using 3/16" Allen key/Trox and a 1/2" wrench/socket. (wrench /socket and Allen key not supplied). Ensure inside of Fender Flares where the rubber seal is attached is clean, using the alcohol wipes provided. Wipe away any residue with a dry clean cloth.



STEP 12: Attach the included extrusion to the Fender Flares. Peel back 2" of the adhesive backing and position on the Fender Flare. Attach the extrusion to the Fender Flare, peeling back a few inches at a time. Ensure pressure is used to secure extrusion to Fender Flare edge. Attach extrusion along all areas the Fender Flare contacts the vehicle body. Trim excess extrusion. Attach extrusion to the bottom front corner of Fender Flares per the attached image that will locate around the factory spat.

For Technical Support/Warranty Information please call 800-757-7075

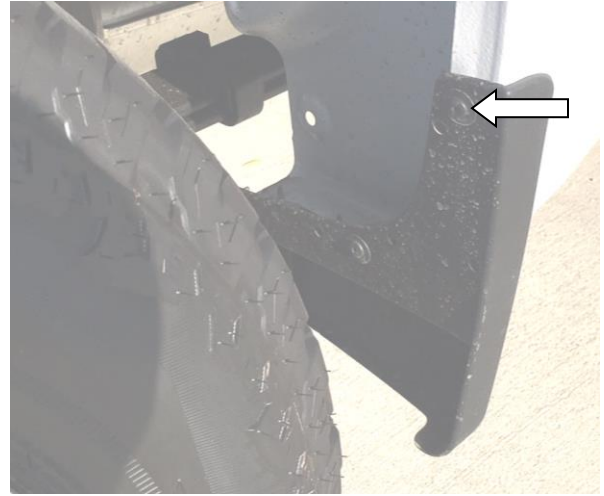
EGR Inc., 4000 East Greystone Drive, Ontario, CA 91761



Installation Instructions
Bolt-On/Rugged Look Fender Flares
Chevy Silverado 1500 (23-On) FIT-FF990



STEP 13: Clean the body areas where the Fender Flares will make contact. Ensure fenders are dry prior to install.



STEP 14: Using #15 Torx head screwdriver remove upper screw from the front factory spat in the rear wheel arch. Maintain screws for re-install.

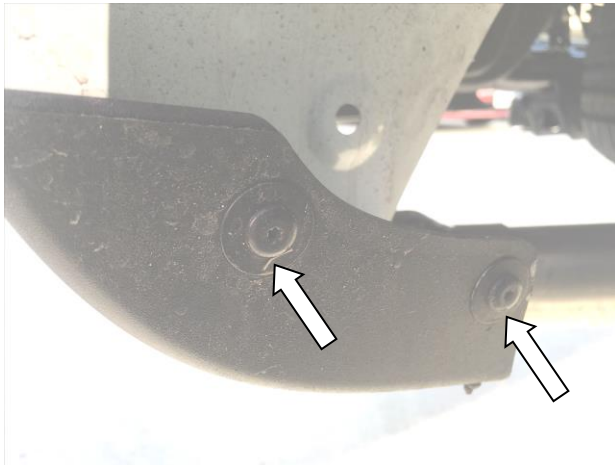
For Technical Support/Warranty Information please call 800-757-7075

EGR Inc., 4000 East Greystone Drive, Ontario, CA 91761

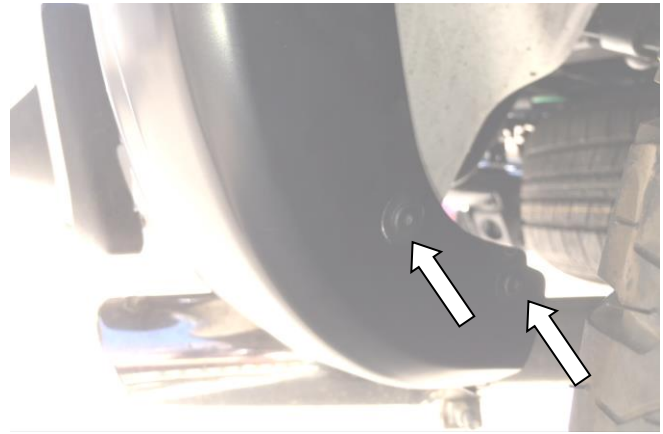


Installation Instructions

Bolt-On/Rugged Look Fender Flares
Chevy Silverado 1500 (23-On) FIT-FF990



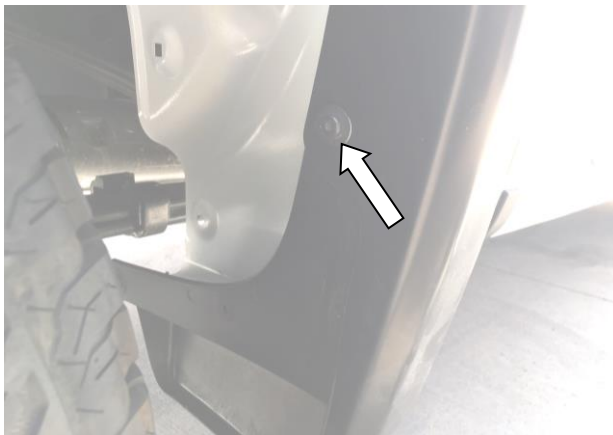
STEP 15: Using #15 Torx head screwdriver remove the two bottom screws from the rear factory spat. Maintain screws for re-install.



STEP 16: Place Fender Flare on the vehicle into the position of best fit. Note where the slots in Fender Flare align with the previously removed factory screws in the front and rear spats. Peel back 2 inches of the red tape liner on the fender flare extrusion at both ends. Using #15 Torx head screwdriver re-install the upper and lower screws from the rear factory spat through the slots in the Fender Flare.



Note: Inner sealant bead in wheel well.



STEP 17: Using #15 Torx head screwdriver, re-install the upper screw from the front factory spat in the rear wheel arch through the slot in the Fender flare.



STEP 18: To secure the Fender Flare to the body, apply upward tension on Fender Flare to the vehicle fender, carefully peeling back the tape liner a few inches at a time while also installing the black metal clips. Slide the clips over the Fender Flare and the inner wheel arch lip in the three locations shown. Position the clip so that the barb in the clip locates in the slot of the Fender Flare. Ensure all fixing points are tight and secure and that the extrusion is flush neatly against the vehicle body. Repeat install steps for the opposite side.

Note: If sealant bead in the inner wheel lip prevents the clips from engaging the slot in the part, with a sharp utility knife cut away the mastic seal that corresponds to the noted clip locations. Cut width of clip and 10mm either side of the locations, to ensure enough sealant has been removed test clip to ensure this engages the slot in the part.

ACTUAL PART MAY DIFFER FROM PICTURE

For Technical Support/Warranty Information please call 800-757-7075

EGR Inc., 4000 East Greystone Drive, Ontario, CA 91761