

CHEVROLET C6 CORVETTE

2008-2013 6.2L

2006-2013 Z06 7.0L

CORSA
PERFORMANCE



IMPORTANT! WARRANTY AND INSTALLATION INSTRUCTIONS

Please Forward All Information to End Consumer

Be sure to review the enclosed instructions prior to beginning the installation process. If you have any questions about the enclosed parts or instructions, or if you encounter a problem during installation:

CALL TECHNICAL SUPPORT: 440.891.0999 or 800.486.0999

**TO ACTIVATE YOUR WARRANTY, GO TO:
CORSA PERFORMANCE.COM/WARRANTY**

**COLOR INSTRUCTIONS ARE AVAILABLE BY PART NUMBER ON:
CORSA PERFORMANCE.COM**



NEVER work on a hot engine bay.
Allow time for the vehicle to cool.

INSTALL DIFFICULTY



RECOMMENDED TOOLS & SUPPLIES

- 8mm Socket & Ratchet or Nut Driver
- T20 Torx Screwdriver
- #2 Phillips Screwdriver

Please take time to read and understand these installation instructions.

CORSA recommends that the installation of this system be performed by a qualified service center or professional installer who has the necessary equipment, tools, and experienced personnel. However, if you decide to perform this installation yourself, the use of an additional person may be required.

WARNING: Never work on a hot engine bay. Allow time for the vehicle to cool.

Check that this air intake complies with your Federal, State, and Local laws.
 We recommend saving your stock system.

This warranty does not extend to damaged or defect in the finish of a product or to any product, that in the opinion of CORSA Performance, has been misused, damaged by accident or negligence, altered or modified in any way, faulty installation or installed contrary to CORSA installation instructions, or repaired by an unauthorized service facility. Full warranty available on www.corsaperformance.com

Please confirm that all parts are present according to the bill of materials before beginning the installation.

If something is missing, call CORSA Tech Support at 440.891.099 or Toll Free: 1.800.486.0999



PREASSEMBLED MATERIALS

- | | |
|---|-------------------------------|
| 1. 441314 – CORSA Carbon Fiber Air Duct | 2. 5159D – DryTech Dry Filter |
|---|-------------------------------|

HARDWARE KIT (652135)

- | | | | |
|---------------------------------------|---|---------------------------------------|---|
| 3. 52064 – #64 Clamp | 2 | 4. 59051208 – MAF Screws (Not Shown) | 1 |
| 5. 53109 – Ø4" x 2.5" Silicone Sleeve | 1 | 6. 652006 – Grommet (Shown Assembled) | 2 |

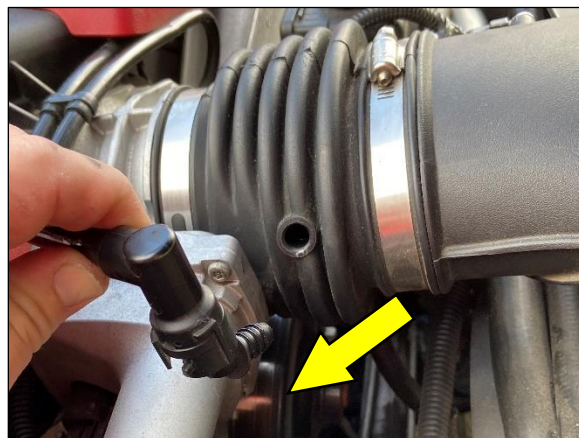
*Locate the vehicle's battery and disconnect the negative battery cable.
This may reset the computer and clear old air flow data to help prevent CEL errors.*

REMOVAL INSTRUCTIONS

FACTORY AIR INTAKE



1. Using an 8mm Socket & Ratchet or Nut Driver, loosen the band clamp on the Stock Air Duct that is closest to the Throttle Body.

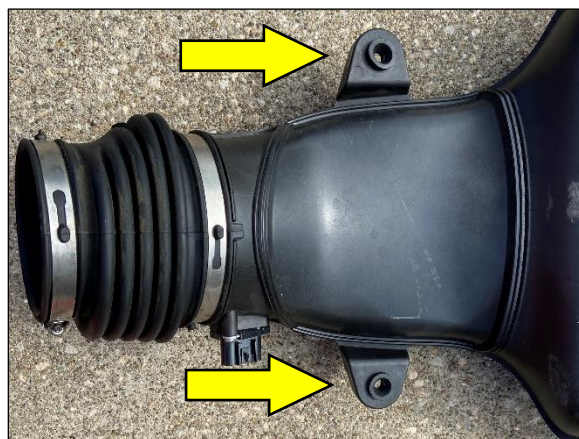


2. Locate the Oil Breather Hose on the Passenger side of the Stock Air Duct, next to the throttle body. Remove the Breather by pulling the elbow fitting from the Stock Air Duct.



3. Locate the MAF Sensor on the Stock Air Duct. Pull the Grey Locking tab Clip on MAF Sensor Plug. Squeeze the Black Tabs under Grey Clip to release the Plug then pull the Harness from the MAF Sensor.

Move the Wiring Harness out of the way for now.



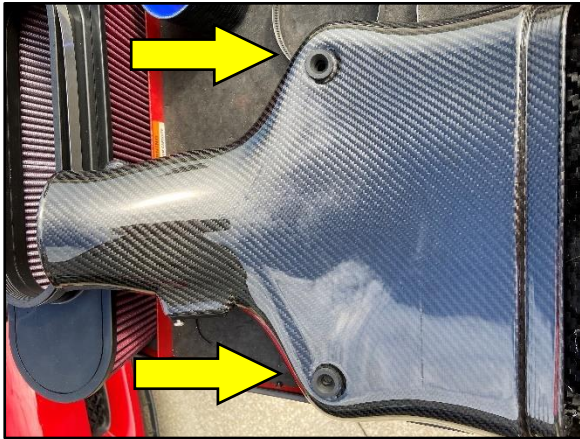
4. Next, remove the Stock Air Duct by pulling the hose from the Throttle Body and lifting the whole Stock Air Duct upward.

NOTE: There are 2 Mounting Grommets that secure the Stock Air Duct to the Radiator Shroud. Ensure all the Mounting Grommets are in place on the stock Air Box. They will be needed in Installation Step 1.

This concludes the removal of the Stock Air Intake

INSTALLATION INSTRUCTIONS

CORSA Carbon Fiber Air Intake



- 1.** Locate the Mounting Grommets from Removal Step 4. On the underside of the CORSA Carbon Fiber Duct, install the Mounting Grommets into the 2 holes by twisting while pushing the Grommets into the holes.
- 2.** Locate the included Grommet (652006). Insert the Grommet into the hole on the neck of the CORSA Carbon Fiber Duct.

This is for the Oil Breather Tube in a later step.



- 3.** Locate the Stock Air Duct and remove the 2 MAF Screws using a T20 Torx screwdriver. The screws will NOT be reused. Remove the MAF Sensor by gently pulling it out of the Stock Air Duct
- 4.** Insert the MAF Sensor into the CORSA Carbon Fiber Air Duct. Install the included black MAF Screws, using a #2 Philips screwdriver and torque to 35 in-lbs (4 N-m).

Continued on Next Page ...

INSTALLATION INSTRUCTIONS

CORSA Carbon Fiber Air Intake



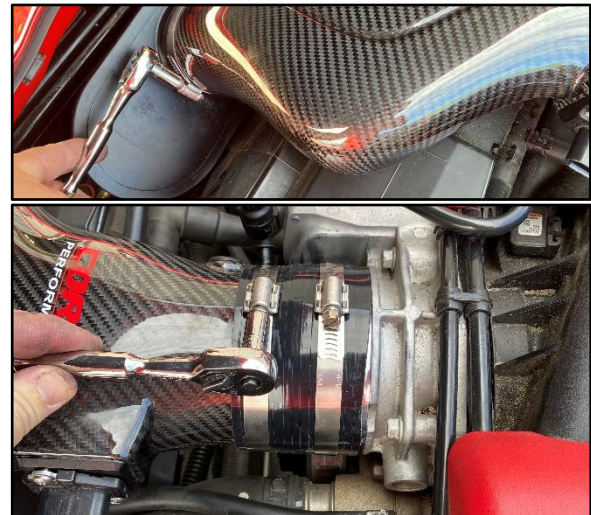
- 5.** Assemble the Silicone Sleeve onto the CORSA Carbon Fiber Air Duct, then slide the 2 Clamps over the Silicon Sleeve. Using an 8mm Socket & Ratchet or Nut Driver, lightly snug the Clamp shown above.



- 6.** Locate the CORSA Air Filter. Insert the Air Filter into the cavity above the Radiator Shroud, as shown above. Ensure the included Clamp is accessible. This will need to be tightened after the CORSA Carbon Fiber Air Duct is installed.



- 7.** Insert the Silicon Sleeve onto the Throttle Body, ensuring the 2 Clamp are in place. Next, insert the CORSA Carbon Fiber Air Duct into the Air Filter. After the Air Filter is assembled, push down on the CORSA Carbon Fiber Duct to attach the Mounting Grommets to the Radiator Shroud

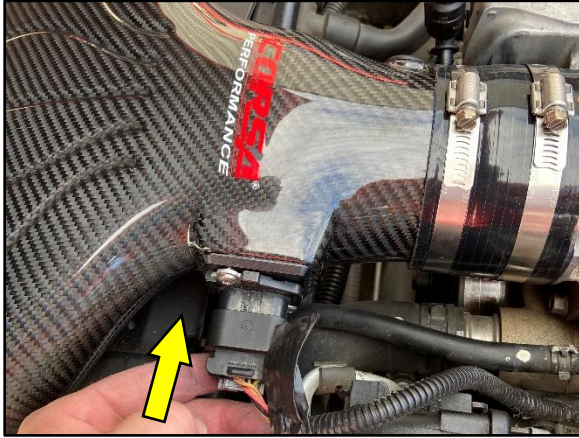


- 8.** Starting with the Air Filter Clamp and repeating for both the Clamps on the Silicon Sleeve, use an 8mm Socket & Ratchet or Nut Driver, torque the Hose Clamps to 44 in-lbs (5 N-m).

Continued on Next Page ...

INSTALLATION INSTRUCTIONS

CORSA Carbon Fiber Air Intake



9. Locate the MAF Sensor Harness and gently push the Plug onto the MAF Sensor. Push the GREY Clip in on MAF Sensor Plug to lock it in place.
10. Locate the Oil Breather Hose and push the Oil Breather fitting into the Grommet in the Air Duct (from Install Step 2)



11. Review the routing of all Hoses, wires and the location of any parts that were moved during the installation. Ensure everything is secured and away from any moving parts. Zip-Ties or similar may be required to secure everything properly. Finally, reconnect the negative battery cable.

This concludes the installation of the CORSA Carbon Fiber Air Intake.

*Check that this air intake complies with your Federal, State and Local laws.
We recommend saving your stock system.*

BEFORE ROAD TESTING

1. Start engine, leaving the transmission in park or neutral and the parking brake engaged.
 2. Make sure to look and listen for any unusual noises or air leaks. Repair problems if needed.
 3. Once completed it will be necessary to check periodically, after a few heat cycles, for realignment and tightening of all connections.
-

For Replacement Filters, go to www.corsaperformance.com and search for:



5159D – DryTech Dry Filter