



2024+ Ford Ranger 2.3L



IMPORTANT! WARRANTY AND INSTALLATION INSTRUCTIONS

Please Forward All Information to Consumer

Be sure to review the enclosed instructions prior to beginning the installation process. If you have any questions about the enclosed parts or instructions, or if you encounter a problem during installation:

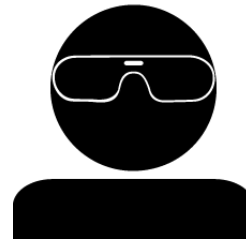
CALL TECHNICAL SUPPORT: 440.891.0999 or 800.486.0999

**TO ACTIVATE YOUR WARRANTY GO TO:
[CORSAPERFORMANCE.COM/WARRANTY](https://corsaperformance.com/warranty)**

COLOR INSTRUCTIONS ARE AVAILABLE BY PART NUMBER ON: [CORSAPERFORMANCE.COM](https://corsaperformance.com)



NEVER work on a hot exhaust system.
Allow time for the vehicle to cool.



**Always wear eye protection
when working under a vehicle.**

INSTALL DIFFICULTY

RECOMMENDED TOOLS & SUPPLIES

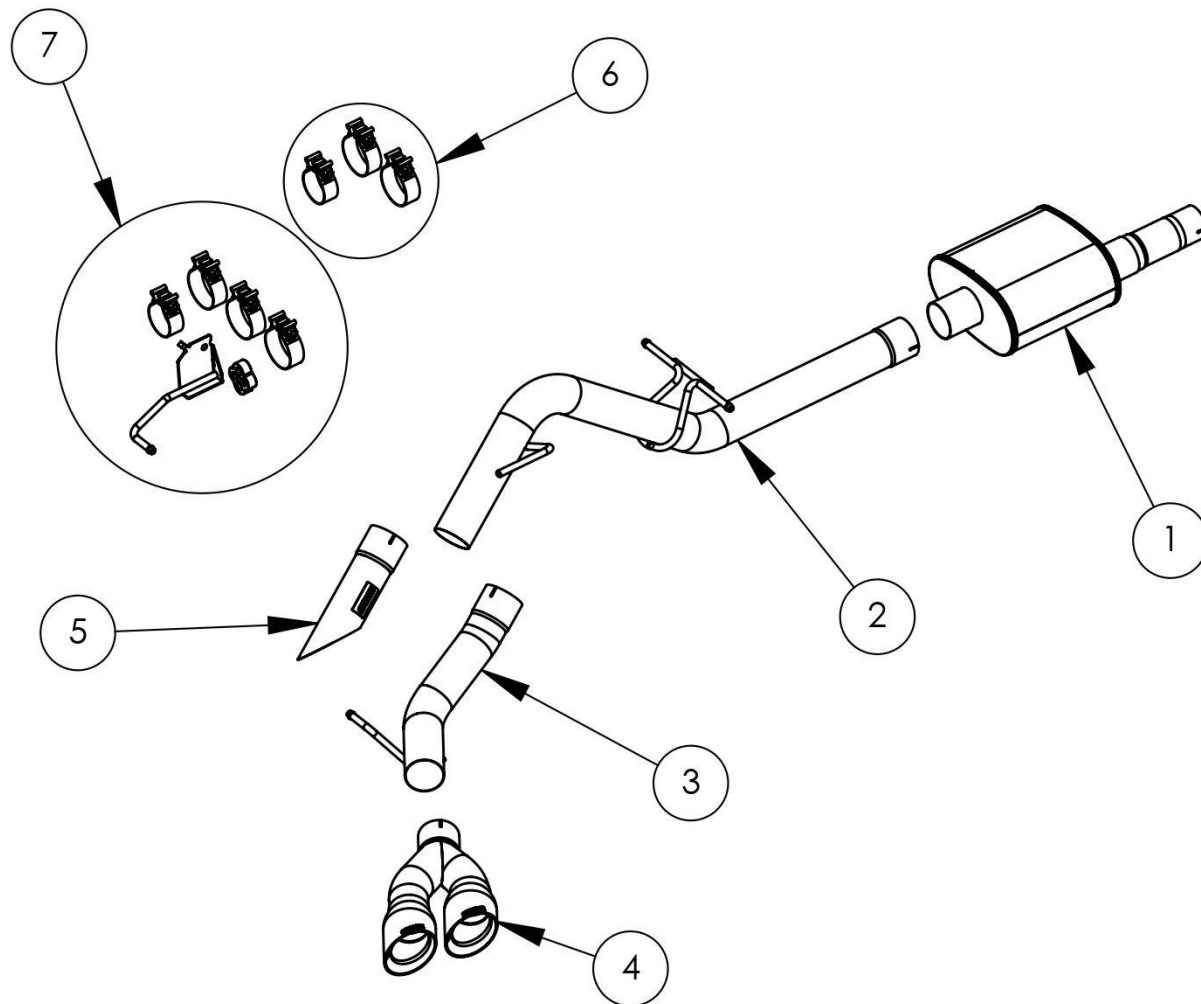
- 3/8" Drive Ratchet
- 3/8" Drive 15mm Deep Socket
- 3/8" Drive 13mm Deep Socket
- 3/8" Drive 10mm Deep Socket
- Torque Wrench
- Grommet Pullers
- Soapy Water Solution
- Safety Glasses

PLEASE READ THESE INSTRUCTIONS BEFORE INSTALLATION.

CORSA recommends that the installation of this system be performed by a qualified service center or professional installer who has the necessary equipment, tools, and experienced personnel. However, if you decide to perform this installation yourself, the use of an additional person may be required.

WARNING: Never work on a hot exhaust system. Allow time for the vehicle to cool. Always wear eye protection when working under a vehicle.

This warranty does not extend to damaged or defect in the finish of a product or to any product, that in the opinion of CORSA Performance, has been misused, damaged by accident or negligence, altered or modified in any way, faulty installation, or installed contrary to CORSA installation instructions, or repaired by an unauthorized service facility. Full warranty available on www.corsaperformance.com



FORD RANGER CAT BACK EXHAUST BILL OF MATERIALS – 21246/BLK, 21247

1.	Muffer Assembly (20RR2000)	2.	Axle Pipe Assembly (20RR4001) 21246 & 21246BLK Only
3.	Tail Pipe Assembly (20RR4003) – 21246 & 21246BLK Only	4.	Tip Assembly (16TA3000 or 16TA3000BLK)
5.	Turndown Pipe (20RR4005) – 21247 Only	6.	Hardware Kit for 21247 (20RR7008)
7.	Hardware Kit for 21246 & 21246BLK (20RR7008)		

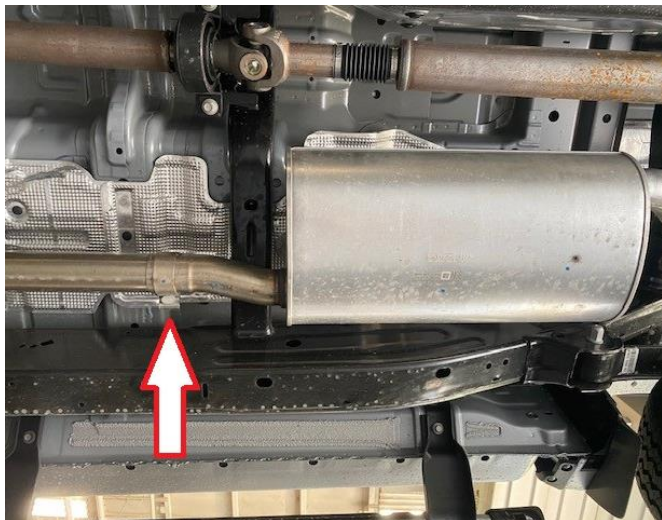
CAUTION: Never work on a hot exhaust system. Allow the vehicle to cool for at least an hour and a half. Always wear eye protection when working under a vehicle. It is recommended to use cotton gloves in order to protect stainless steel surfaces from permanent grease and oil stains.

Please confirm that all parts are present according to the bill of materials before beginning the installation.

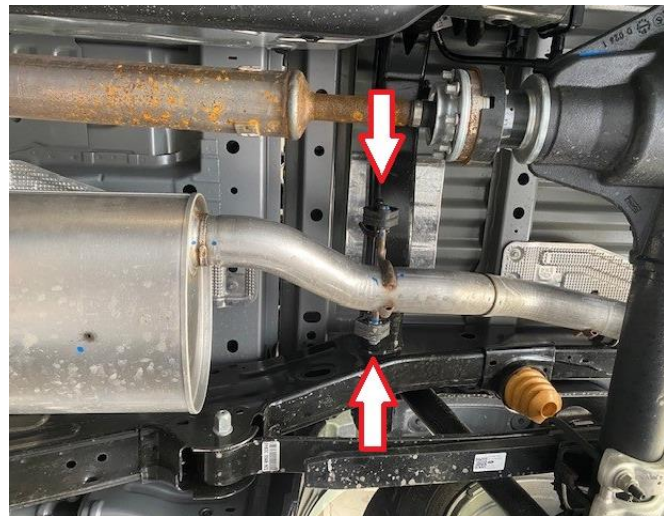
If something is missing call Tech Support at 440.891.099 or Toll Free: 1.800.486.0999

REMOVAL INSTRUCTIONS

FACTORY EXHAUST



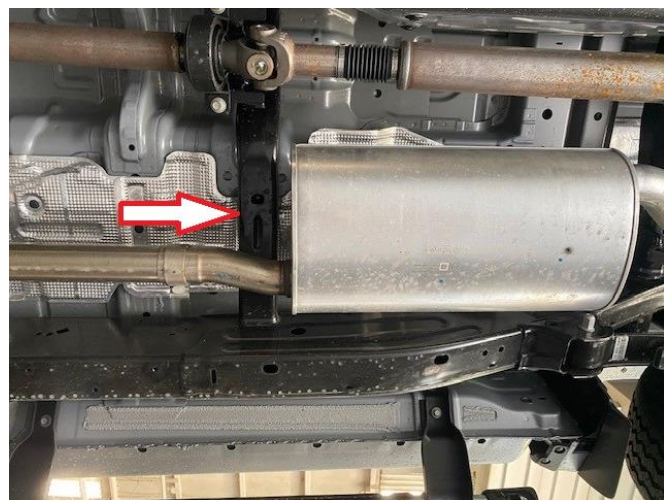
1. Using a 15mm deep socket and ratchet, loosen the clamp just in front of the stock muffler.



2. Using grommet pullers or a similar device, remove the front two axle pipe hangers from the OE grommets. **NOTE:** The use of a soap and water solution will aid in the removal of the hanger grommets.



3. Using a 10mm socket and ratchet, remove the bolt securing the metal encapsulated exhaust hanger grommet assembly. Once removed, rotate the grommet away from the vehicle frame.



4. At this point the exhaust is loose. Slide the exhaust rearward and away from the expanded connection joint in front of the muffler. Lower the front portion of the exhaust and maneuver the tailpipe section over and around the rear axle - towards the front of the vehicle.

Continued on Next Page ...

REMOVAL INSTRUCTIONS

FACTORY EXHAUST



- 5.** Remove the encapsulated exhaust hanger grommet from the OE exhaust.
NOTE: Note the grommet orientation for installation.



- 6.** Using the stock bolt from Step 3 of these removal instructions, a 10mm socket and ratchet, reinstall the encapsulated exhaust hanger grommet back onto the vehicle frame.

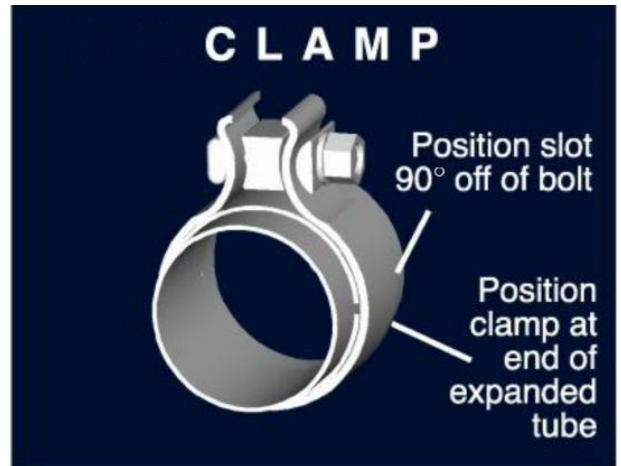
This concludes the removal of the factory exhaust.

WARNING! DO NOT SKIP THIS STEP!

It is recommended to apply the anti-seize lubricant to the threads **ONLY** of the clamps and flange bolts. Failure to follow this procedure can cause nuts to seize on clamps and potentially destroy threads.

After applying anti-seize lubricant, be sure to **thoroughly** clean your hands, as lubricant will tarnish stainless steel.

All clamps should be tightened using a properly calibrated Torque Wrench. Using an air impact gun will damage the clamp and reduce its ability to effectively seal the joint. It may also cause the joint to separate, thereby causing damage to your exhaust system and to your vehicle.



NOTE: Align all clamps so that the center of the clamp bolt is 90 degrees from the notch in the pipe.

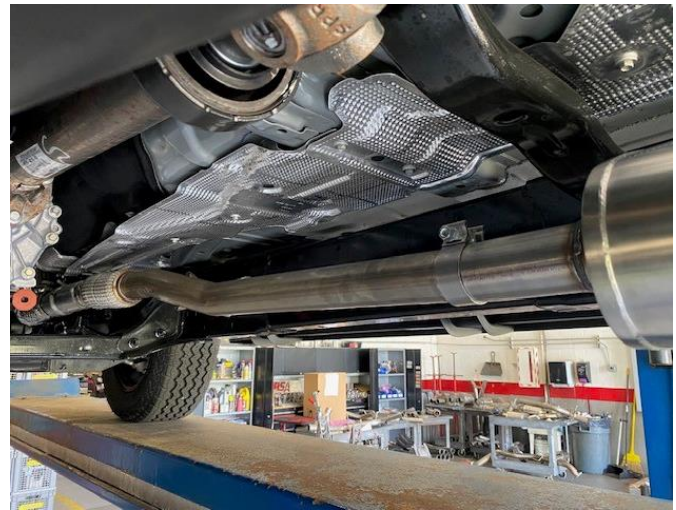
INSTALLATION INSTRUCTIONS

CORSA EXHAUST



1. Locate one 2.5" clamp from the hardware kit. Using a 15mm socket and ratchet, back off the clamp nut approximately half a turn or 180 degrees. This will allow easier installation over the muffler inlet pipe.

NOTE: Use caution when reversing the nut as to not disengage the treads.



2. Slide the 2.5" clamp over the inlet pipe of the Corsa muffler assembly and position the clamp so that when installed the clamp bolt is positioned horizontally over the pipe with the nut facing the center of the vehicle. Next, slide the muffler inlet pipe over the stock exhaust until it bottoms out. Rotate and align the muffler so that it is level, snug the clamp, but do not fully tighten at this time. **NOTE:** Support the rear of the muffler until the axle pipe in the following steps is installed.

Continued on Next Page ...

INSTALLATION INSTRUCTIONS

CORSA EXHAUST



- 3.** Locate the Corsa axle pipe assembly and one 3" clamp. Slide the clamp over the expanded inlet end of the axle pipe so that when installed the clamp bolt is positioned horizontally over the pipe with nut facing towards the center of the vehicle. Insert the rear axle pipe hanger into the encapsulated frame mounted exhaust hanger. **NOTE:** The use of soap and water solution will aid in the installation of hangers.



- 4.** Insert the two front axle pipe hangers into the stock exhaust grommets. **NOTE:** The use of soap and water solution will aid in the installation of hangers.



- 5.** Slide the expanded inlet end of the Corsa axle pipe assembly over the Corsa muffler outlet. Snug the clamp using a 15mm deep socket and ratchet but do not fully tighten at this time.



Tail Pipe & Tip Variant (21246 & 21246BLK)

- Proceed to Steps 6 -12.

Exhaust Axle Turndown Variant (21247)

- Proceed to Step 13.

Continued on Next Page . . .

INSTALLATION INSTRUCTIONS

CORSA EXHAUST



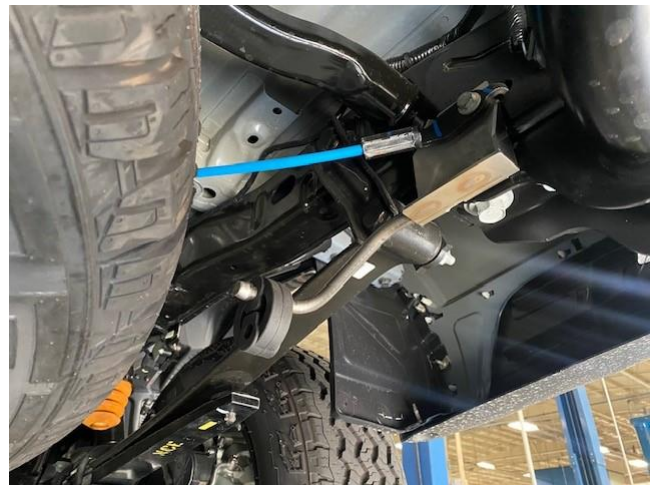
- 6.** Using a 13mm socket and ratchet, loosen and remove the bolt securing the spare tire tether to the vehicle frame. Move the tether away.



- 7.** Locate the supplied hanger bracket from the hardware kit. Align the hole on the hanger bracket to the threaded hole on the vehicle frame along with the anti-rotation tab to the corresponding hole on the frame.



- 8.** Reusing the stock bolt removed during Step 6, 13mm socket and ratchet, reinstall the spare tire tether over the hanger bracket and tighten securely.



- 9.** Install the supplied rubber hanger grommet onto the hanger installed in the previous step.
NOTE: The use of soap and water solution will aid in the installation of hangers.

Continued on Next Page . . .

INSTALLATION INSTRUCTIONS

CORSA EXHAUST



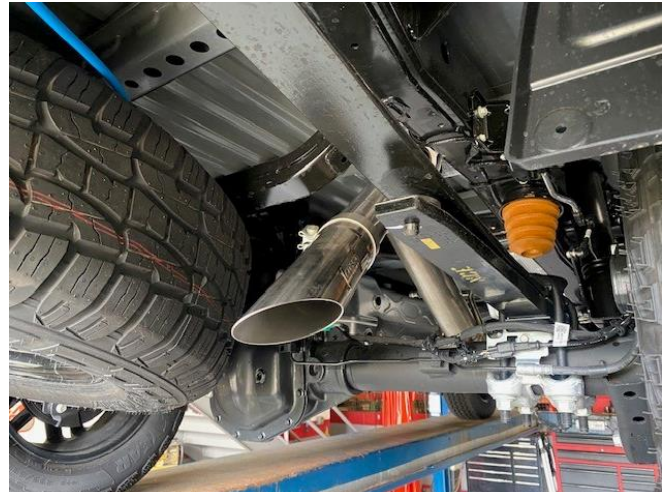
- 10.** Locate the Corsa tail pipe assembly and a 3" clamp. Position the clamp over the expanded inlet end of the pipe with the clamp bolt oriented vertically, towards the spare tire, and the clamp nut facing down. Insert the tail pipe hanger into the previously installed rubber grommet. Slide the expanded inlet end of the tail pipe over the axle pipe outlet and snug the clamp using a 15mm socket and ratchet but do not fully tighten.



- 11.** Rotate the tail pipe so that the two hangers are vertically and horizontally aligned.



- 12.** Locate the Corsa tip assembly and the remaining 3" clamp. Position the clamp over the expanded end of the tip assembly with the clamp bolt positioned vertically towards the spare tire and the nut facing down. Slide the tip over the tail pipe outlet and snug the clamp but do not fully tighten. Proceed to Step 14.



- 13.** Locate the Corsa turn down pipe and a 3" clamp. Position the clamp over the expanded end of the pipe with the clamp bolt towards the center of the vehicle and clamp nut facing down. Slide the expanded end over the axle pipe outlet and snug but do not fully tighten the clamp. Rotate the pipe so that the cut faces away from the spare tire and the Corsa tag towards the passenger's side.

Continued on Next Page ...

INSTALLATION INSTRUCTIONS

CORSA EXHAUST



14. At this time, visually inspect the exhaust system position, tip alignment, clamp orientation, and exhaust pipe clearance. Make any necessary adjustments at the slip fit joints.

15. With the tips held in the desired location, start at the front of the vehicle, and tighten the nuts on the clamps. Torque all clamp nuts to 45 ft-lbs. (61 N-m) on the clamps.

NOTE: During cold weather start-ups, you may experience an exhaust sound that is deeper and louder in tone than usual. This is temporary and will diminish to normal levels once your engine has reached its normal operating temperature.

NOTE: Immediately following the installation of your exhaust system, you may experience a trace of smoke after initial start-up. DO NOT be alarmed. The smoke is caused by the burning of a small amount of forming oil residue used in the manufacturing process.

NOTE: It is strongly suggested that all clamps be checked and tightened after road testing the vehicle once the system has cooled.