



STEP 1 – PRIOR TO INSTALLATION

- A) Bushwacker only approves installing the flares according to these written instructions with the hardware provided. WARNING: Failure to install according to these instructions will invalidate the warranty. This includes, but is not limited to using alternative installation methods, hardware, or materials. DO NOT USE: Loctite, SuperGlue, or similar products on the hardware or the flares.**
- B) Fit:** Verify the fit of the flares to vehicle. (Some filing, sanding, or cutting may be necessary to ensure proper fit).
- C) Painting:** (Optional) if paint is desired it must be done prior to installing flares on vehicle. Clean outer surface with a good grade degreaser. **DO NOT USE LACQUER THINNER OR ENAMEL REDUCER AS A DEGREASER.** Wipe outer surface thoroughly with a tack rag prior to paint. Application of plastic adhesion promoter for ABS plastic as per your paint system manufacturer's recommendations is required. Paint flares using a high quality enamel, or polyurethane automotive paint. If painting edge trim (not recommended), use a flex additive.
- D) Performance:** Using larger Tires may increase the area required to turn the vehicle. Some Tire/Rim combinations may require lowering bump stops and or installing steering stops to prevent tire from contacting flare.
- E) Exhaust System:** Modifications may be necessary to maintain a minimum 4" clearance between flares and exhaust pipes. (Exhaust gases should not vent directly onto flares)
- F) Metal Protection:** All exposed fasteners and bare metal should be treated with rust resistant paint BEFORE installing flares. Spray inner fender wells with undercoating AFTER flare attachments have been completed.
- G) Decals:** Flares may interfere with existing decals on vehicle. If you wish, remove decals prior to installation of flares.
- H) Care & Cleaning:** Bushwacker fender flares are built to last; any detergent you use to wash your vehicle is sufficient to clean the flare. Do not use any harsh abrasive detergents.

GMC Extend-A-Fender® Fender Flares Set of 4

Set Part #40952-02

Rev-3 2/18/2016

For complete fitment info visit : www.bushwacker.com

TOOLS FOR EASY INSTALLATION:







- 3/8" Wrench
- 7/16" Wrench
- 7mm Socket
- Electric Drill
- 5/16" Drill Bit
- #2 Phillips Driver
- Grease Pencil
- Pry Tool
- Awl (or similar pointed tool)
- Partner/Helper (optional)


PLEASE READ: Dirt and debris can become lodged between the fender flares and the vehicle's fenders, causing scratching and paint wear from vibration. Lund International is not responsible for any damage, and the installation of our fender flares is done with the buyer's understanding that this scratching and paint wear may occur.

LIMITED LIFETIME WARRANTY AGAINST ANY MANUFACTURING DEFECTS

- To claim a warranty, you must provide Proof of Purchase.

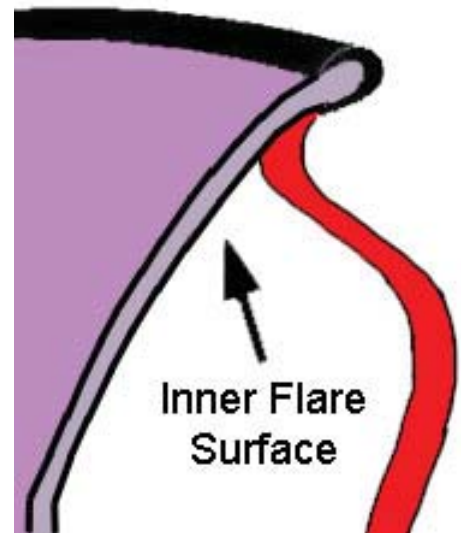
Included in Hardware Kit:

- | | | | | | | | | | | | | | |
|----|---|----|---|----|---|----|---|----|--|----|---|----|---|
| 1. |  | 2. |  | 3. |  | 4. |  | 5. |  | 6. |  | 7. |  |
| | CL1-0022,
#10 "U" Clip,

4 pcs | | CL1-0005,
Dacromet "S"
Spring Clip,
8 pcs | | SW1-0050,
10 x 5/16 Phillips
Truss Screw,
8 pcs | | SW1-0058,
#10 x 5/8" Phillips
SS Truss Screw,
4 pcs | | MT1-0014,
1" x 1.5" x .01"
Black Mylar Tab,
8 pcs | | SW1-0005,
1/4-20 x 3/4"
HxHd Slot Screw,
4 pcs | | NU1-0015,
1/4-20 SS
Nylock Nut,
4 pcs |
| 8. |  | | | | | | | | | | | | |
| | GP1-0008,
Duro (NC02/S 70)
Edge Trim,
364 inches | | | | | | | | | | | | |

STEP 2 - EDGE TRIM INSTALLATION

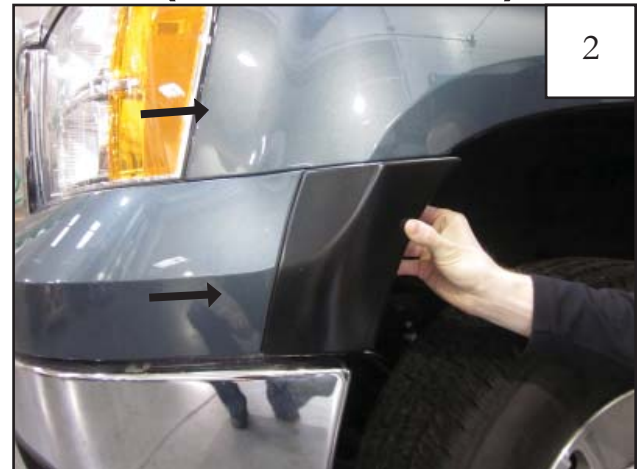
- A) Peel two to three inches of red vinyl backing away from Edge Trim (GP1-0008) tape. Applying the adhesive side of the edge trim to the inner side of the flare, affix the edge trim to the top edge of the flare (the portion that comes in contact with the vehicle).
- B) Press edge trim into place along the top edge of the flare in one-foot increments, pulling red vinyl backing free as you continue to work your way around the top edge of the flare.



Front Flare Installation Procedures (Driver's Side):



Remove factory mudflap if applicable. Using a 7mm socket, remove four factory screws from wheel well and save for reinstallation. If installing optional bumper piece, remove two front factory screws from bumper and save for reinstallation. *Note: Some models have plastic retainers at top center; remove with pry tool and discard if on vehicle.*



OPTIONAL BUMPER PIECE: This vehicle comes with different bumper sizes. If installing the optional bumper piece, verify which piece to use by holding it up to the bumper and making sure it lines up with factory edges and hole locations. After identifying bumper piece, apply edge trim along outer surface.



OPTIONAL BUMPER PIECE: Using a 5/16" drill bit, drill two holes in dimpled hole locations for both flare and bumper piece. *Note: Holes only need to be drilled if bumper piece is being used.*



OPTIONAL BUMPER PIECE: Using 3/8" and 7/16" wrenches, attach bumper piece to flare using supplied Screw (SW1-0005) and Nut (NU1-0015). Make sure both pieces are properly aligned before tightening. *NOTE: Do not overtighten or parts will warp.*



Position flare on fender, aligning bumper piece and flare seams with factory seam. Using a 7mm socket, reinstall factory screws removed in step 1. If needed, use a scratch awl (or similar pointed tool) to locate holes. **DO NOT FULLY TIGHTEN SCREWS**



Check that flare is positioned correctly around wheel well. If not, adjust before tightening screws. Then, making sure bumper piece and flare seams are still aligned with factory seams, *firmly* press the flare up and toward the vehicle while tightening all screws.



OPTIONAL BUMPER PIECE: Completed front flare installation.



Completed front flare installation without bumper piece.

Rear Flare Installation Procedures (Driver's Side):



Remove factory mudflap if applicable. Remove and discard two factory installed plastic retainers in top (outer) hole locations of sheet metal (ignore center location). **NOTE:** *If fender liner is installed, remove factory tufflocs.*



Center a supplied Clip (CL1-0022) over the two holes in Step 9. Clips may need to be adjusted to align with holes in flare. **Note:** *The raised collar on the Clip should face upward into the interior of the fender.*



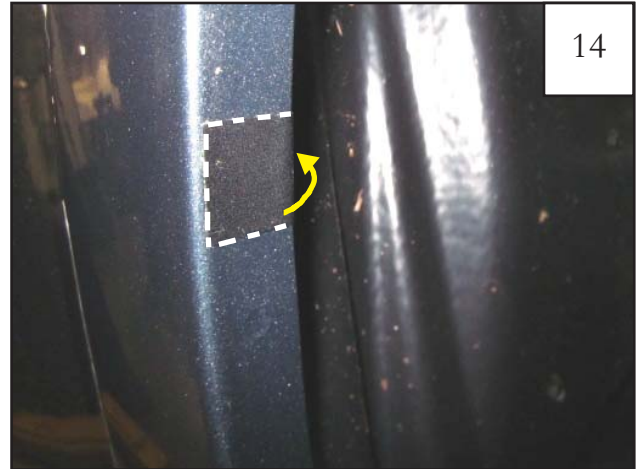
Align flare on vehicle and start a supplied screw (SW1-0058) through the two uppermost holes in the flare and into each clip installed in Step 10. **DO NOT FULLY TIGHTEN SCREWS AS THEY WILL BE UNINSTALLED**



Pushing upward on the flare to ensure proper positioning, use a grease pencil to mark four hole locations. Remove screws installed in Step 11 and remove flare.



Four marked hole locations.



Center a supplied Tab (MT1-0014) over the four marks made in Step 12, aligning edge of Tab with outside edge of fender lip. Fold around back edge of fender lip and press firmly to adhere.



Tab locations.



Slide a supplied Clip (CL1-0005) over each Tab. Clips may need to be adjusted to align with holes in flare.



Reposition flare on fender. Check that flare is positioned correctly around wheel well. If not, adjust before tightening screws. Start a supplied screw (SW1-0058) through the two uppermost holes in the flare and into each clip installed in Step 10. *Firmly* press the flare up and toward the vehicle while tightening both screws.



Start a supplied Screw (SW1-0050) through each of the remaining holes and into each Clip installed in Step 16. If needed, use scratch awl (or similar pointed tool) to locate holes. Tighten all screws.



Completed rear flare installation.

Flare Height & Tire Coverage (Driver's Side):

