

## Installation Guide for Audi SQ5 PNs: 141008, 60749, 60749BC, & 60749SB



**\*\*\*\*\* Please compare the parts in the box with the bill of materials provided \*\*\*\*\*  
to assure that you have all the parts necessary for this installation.**

These instructions have been written to help you with the installation of your Borla Performance exhaust system. Please read this document completely before beginning the installation of your system.

To ensure this part number fits your specific model year, please visit our website for the latest model year listings at [www.BORLA.com](http://www.BORLA.com)

Thank you for purchasing a Borla Performance exhaust system.

Borla Performance Cat-Back™ exhaust system PN 141008 is designed for the Audi SQ5, equipped with a 3.0L turbocharged V6 engine and AWD automatic transmission.

Borla Performance optional tip kit PNs 60749, 60749BC and 60749SB are designed to ONLY work with Borla Cat-Back™ PN 141008 on 2021+ Audi SQ5s.

Borla Performance Industries recommends that an exhaust shop or professional after market parts installer, who has all the necessary equipment, tools and experienced personnel needed for proper installation, should perform the installation of this system. However, if you decide to perform the installation, we recommend someone should help you. Ensure the installer uses all under car safety precautions including eye protection.

*Please take time to read and understand the following...*

By installing your Borla Performance exhaust system, you indicate that you have read this document and you agree with the terms stated below.

It is the responsibility of the purchaser to follow all installation instruction guidelines and safety procedures supplied with your Borla Performance exhaust system.

Borla Performance Industries assumes no responsibility for damages occurring from misuse, abuse, improper installation, improper operation, lack of responsible care, or all previously stated reasons resulting from incompatibility with other manufacturer's products and/or systems.

Included with your Borla Performance exhaust system is a warranty card. Please read it carefully before you begin any work on your vehicle. If you should have any questions regarding our warranty policy, installation, or any other matter pertaining to your new Borla Performance exhaust system, please give us a call at the number provided on the warranty card.

**Minimum Required Tool List:**

**TOOLS:**

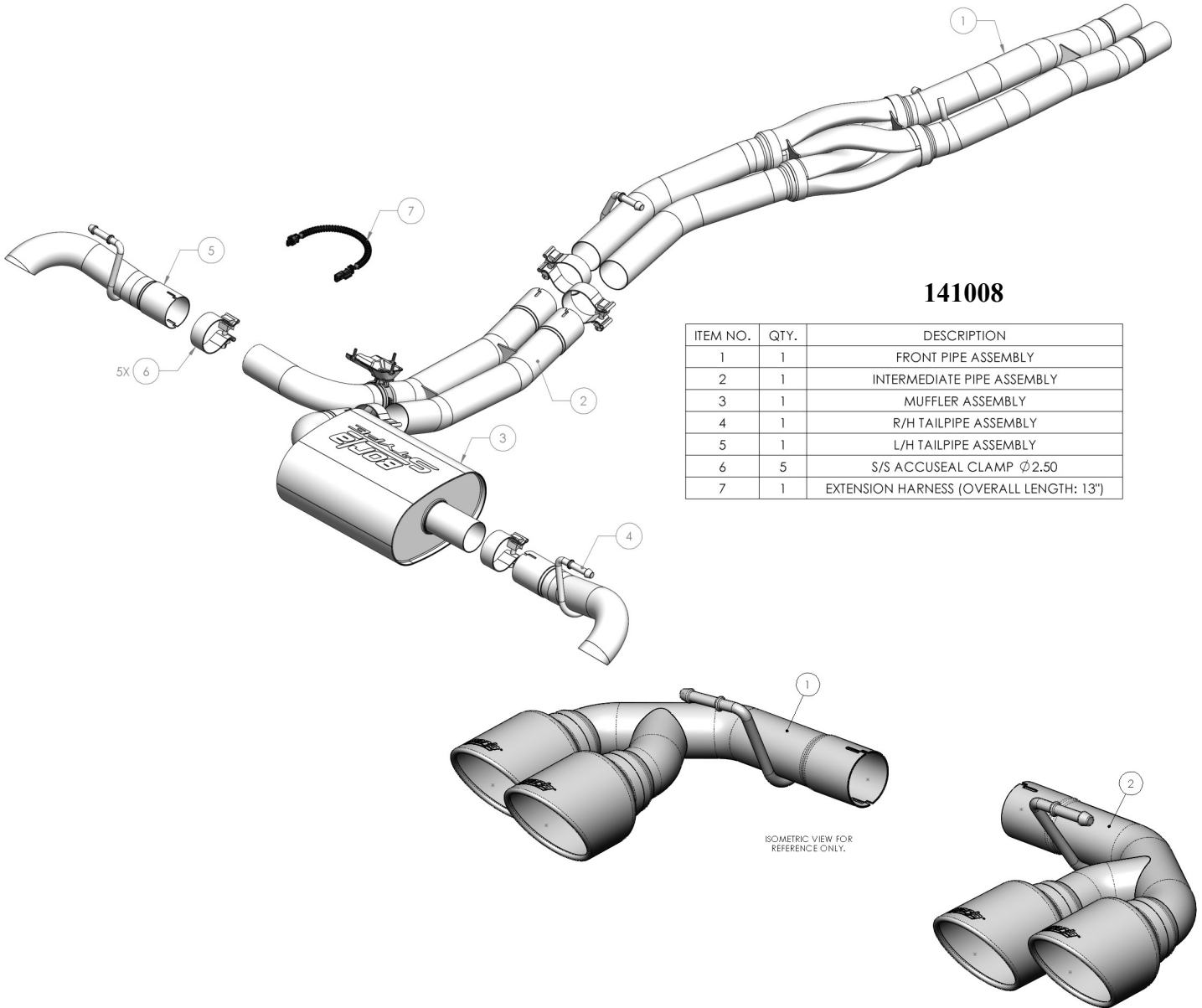
1. 3/8" drive ratchet
2. 3/8" drive extension 6"
3. 12mm deep well socket
4. 13mm deep well socket
5. 13mm box end wrench

6. 15mm deep well socket
7. Pry bar

**SHOP SUPPLIES:**

1. Spray lubricant

**Borla Performance - Bill of Materials**



**141008**

ITEM NO.	QTY.	DESCRIPTION
1	1	FRONT PIPE ASSEMBLY
2	1	INTERMEDIATE PIPE ASSEMBLY
3	1	MUFFLER ASSEMBLY
4	1	R/H TAILPIPE ASSEMBLY
5	1	L/H TAILPIPE ASSEMBLY
6	5	S/S ACCUSEAL CLAMP Ø2.50
7	1	EXTENSION HARNESS (OVERALL LENGTH: 13")

ISOMETRIC VIEW FOR REFERENCE ONLY.

**60749**

ITEM NO.	DESCRIPTION	QTY.
1	LH TAIL PIPE ASSEMBLY	1
2	RH TAIL PIPE ASSEMBLY	1

OPTIONAL TIP KIT WITH BLACK CHROME FINISH TIPS WILL BE 60749C.

**Caution!!!** *Never work on a hot exhaust system. Serious injury in the form of burns can result if the vehicle has been in use and the exhaust system is hot, allow vehicle to cool for at least 1 hour. Always wear eye protection when working under any vehicle.*

**Note:** *It is our recommendation that you use a hoist or hydraulic lift to facilitate the installation of your new Borla Performance Exhaust System.*

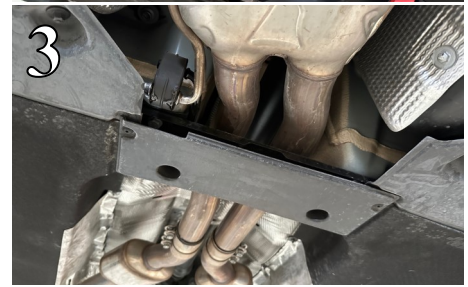
**Taking all under car safety precautions, lift the vehicle using a hoist or hydraulic lift. Once this has been done, you may begin the removal of your old exhaust system from your vehicle.**

**Note:** *Before removing the original exhaust system from your vehicle, please compare the parts you have received with the bill of materials provided on the previous page to assure that you have all the parts necessary for the installation of your new Borla Performance Exhaust System.*

**Note:** *With a used vehicle, we suggest a penetrating spray lubricant to be applied liberally to all exhaust fasteners and allowing a significant period of time for the chemical to lubricate the threads before attempting to disassemble.*

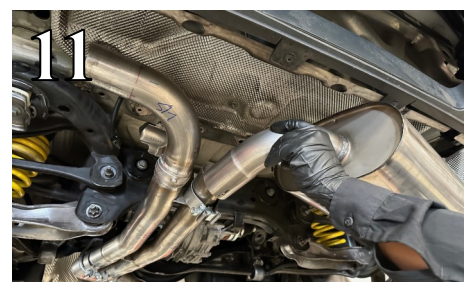
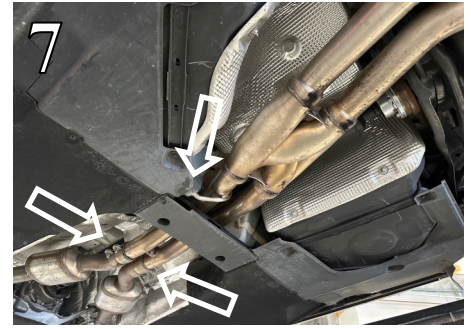
## Original Exhaust System Removal

1. Lubricate all hangers, rubber isolators, bolts and nuts.
2. Disconnect the wiring harness from the valve actuator (Fig. 1).
3. Loosen the hardware on the clamps rear side of the clamps that connect the exhaust system to the vehicle (Fig. 2).
4. Using a flathead screwdriver or a prybar, remove the mid section assembly hangers from their rubber isolators (Fig. 3).
5. Using a flathead screwdriver or a prybar, remove the rear muffler assembly hangers from their rubber isolators and remove the entire exhaust assembly from the vehicle (Figs. 4-5).
6. Loosen and remove the hardware connecting the valve actuator to the exhaust (Fig. 6). Save this hardware and actuator for installation of your Borla system.

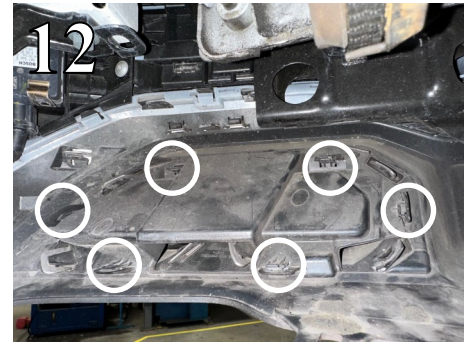


## Borla Performance Cat-Back™ Exhaust System Installation

1. Orient components on shop floor according to Borla bill of materials drawings on page 2.
2. Install **Front Pipe Assembly** by first lifting the assembly up and over the cross member and slide the inlets into the clamps attached to the vehicle. Insert the hangers into their original rubber isolators (Fig. 7). Do not tighten the clamps.
3. Using original hardware, install the original valve actuator to the valve assembly on the **Intermediate Pipe Assembly** (Fig. 8). Ensure that the straight portions of the spring lock into the notches on the top of the Borla valve assembly.
4. Place a clamp over each of the expanded ends of the **Intermediate Pipe Assembly** and insert the inlets to the **Front Pipe Assembly** (Fig. 9). Do not tighten the clamps.
5. Connect the **Extension Harness** to the original valve electrical connector and feed it up and over the original heat shield. Then connect the **Extension Harness** to the valve actuator and slide the locking clip into place (Fig. 10).
6. Place a clamp over the expanded end of the **Muffler Assembly** and insert the inlet to the **Intermediate Pipe Assembly** (Fig. 11). Do not tighten the clamp.



## Borla Performance Cat-Back™ Exhaust System Installation Cont'd



7. For vehicles not installing optional tip kit, please skip to Step 11.
8. Release all of the plastic tabs on the backside of the driver side faux tip assembly and remove the assembly from the vehicle (Fig. 12).
9. Using a sharp blade score and then cut the bumper to remove the portion where the faux tip assembly mounted (Figs. 13-14).
10. Repeat Steps 8-9 to the passenger side of the bumper.
11. Place a clamp over the expanded end of the **L/H Tailpipe Assembly** and insert the inlet to the **Intermediate Pipe Assembly**. Insert the hanger to the original rubber isolator (Fig. 15). Do not tighten the clamp.
12. Repeat Step 11 for the installation of the **R/H Tailpipe Assembly**.
13. Once position has been determined to be correct, tighten the original clamps on the **Front Pipe Assembly** and then tighten the Accuseal clamps to 32-35 ft. lbs.
14. Before starting your vehicle, make sure to check all wires, hoses, brake lines, body parts and tires for safe clearance from the exhaust system.
15. Start the vehicle and check for any leaks. If any leaks are found, determine cause (such as loose or incorrectly positioned clamp) and repair as necessary.

**WARNING:** Use extreme caution during installation. Torque all fasteners according to manufacturer's torque values and tightening sequence. **DO NOT** use air impact tools to tighten fasteners on Borla Performance Exhaust Systems. Use of such tools may result in bent flanges or gasket contact areas leading to exhaust leaks.

**NOTE:** When you first start your vehicle after the installation of your new Borla Performance Exhaust System, there may be some smoke and fumes coming from the system. This is a protective oil based coating used in the manufacturing of mandrel bent performance exhaust tubing. This is not a problem and will disappear within a very short period of time after the exhaust has reached normal operating temperatures.