

GT
MOMENTUM

advanced FLOW engineering

Cold Air Intake System

Instruction Manual P/N: 50-70105D / 50-70105R

Make: BMW
Make: BMW

Model: X3 M40i (G01)
Model: X4 M40i (G02)

Year: 2020-2023
Year: 2020-2023

Engine: L6-3.0L(t) B58
Engine: L6-3.0L(t) B58



- Please read the entire instruction manual before proceeding.
- Ensure all components listed are present.
- For technical support please call at 951-493-7185.
- Ensure you have all necessary tools before proceeding.
- Do not attempt to work on your vehicle when the engine is hot.
- Retain factory parts for future use.

Label	Qty.	Description	Part Number
A	1	Air Filter (Pro DRY S) For 50-70105D	21-91093
A	1	Air Filter (Pro 5R) For 50-70105R	24-91093
B	1	Tube	05-5070105B1
C	1	Housing	05-5070105B2
D	1	Coupling, Silicone Bellow: 3"Length	05-01525
E	2	Clamp, #048	03-50007
F	1	Aluminum Fitting	03-50644
G	2	Screw, M4	03-50490
H	1	Plug, Silicone	05-01482

Installation will require the following tools:

8mm and 7mm Nut drivers or sockets, socket wrench, flat-head screwdriver, T20 torx bit, and panel popper.

Warranty information available at <https://afepower.com/contact#warranty>.

Emissions Disclaimer:

This product is not currently CARB exempt and is not available for purchase in California or for use on any vehicle registered with the California Department of Motor Vehicles.

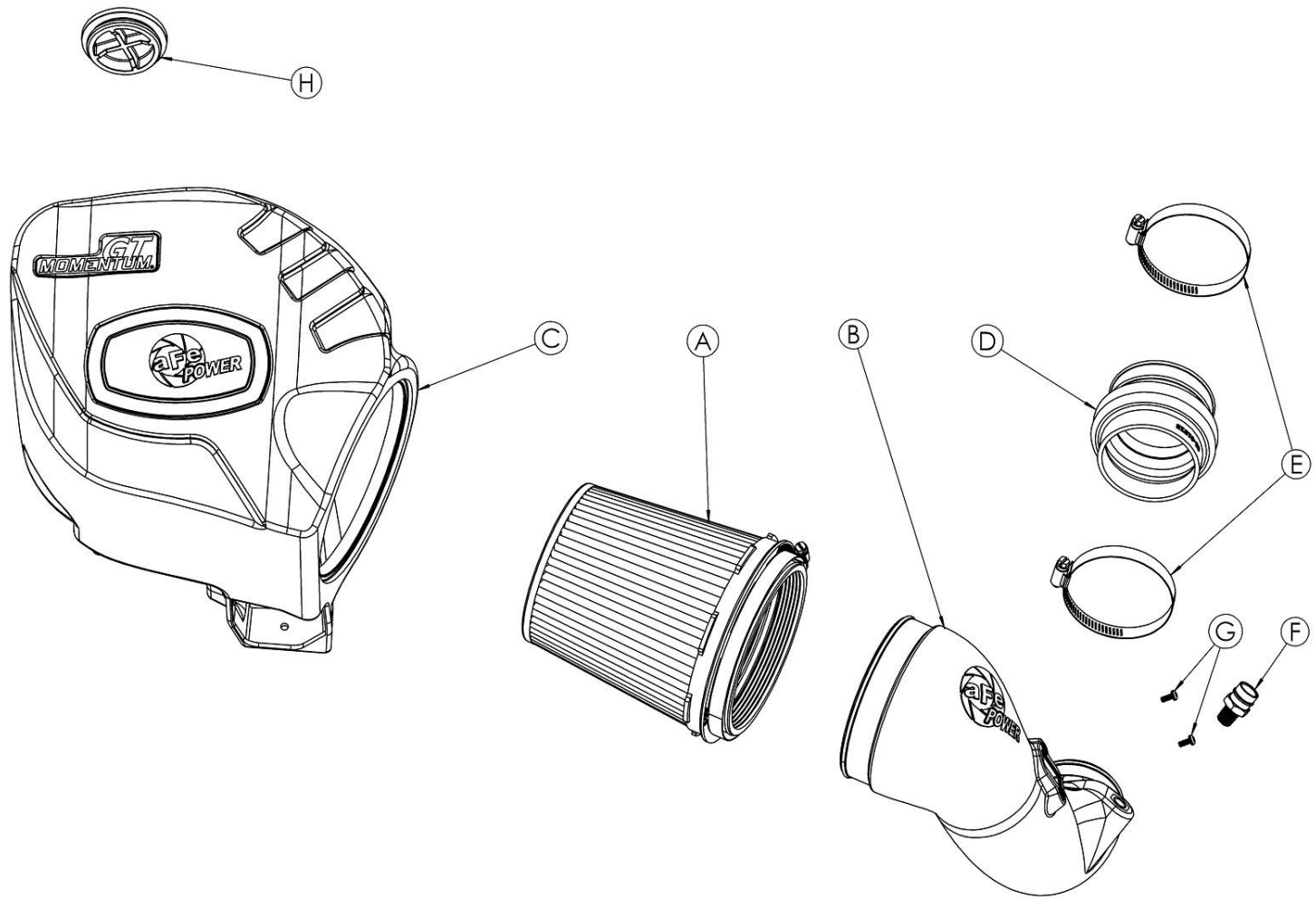




Figure A

Refer to Figure A for Step 1

Step 1: If the vehicle is equipped with a brace above the factory intake, remove the brace.

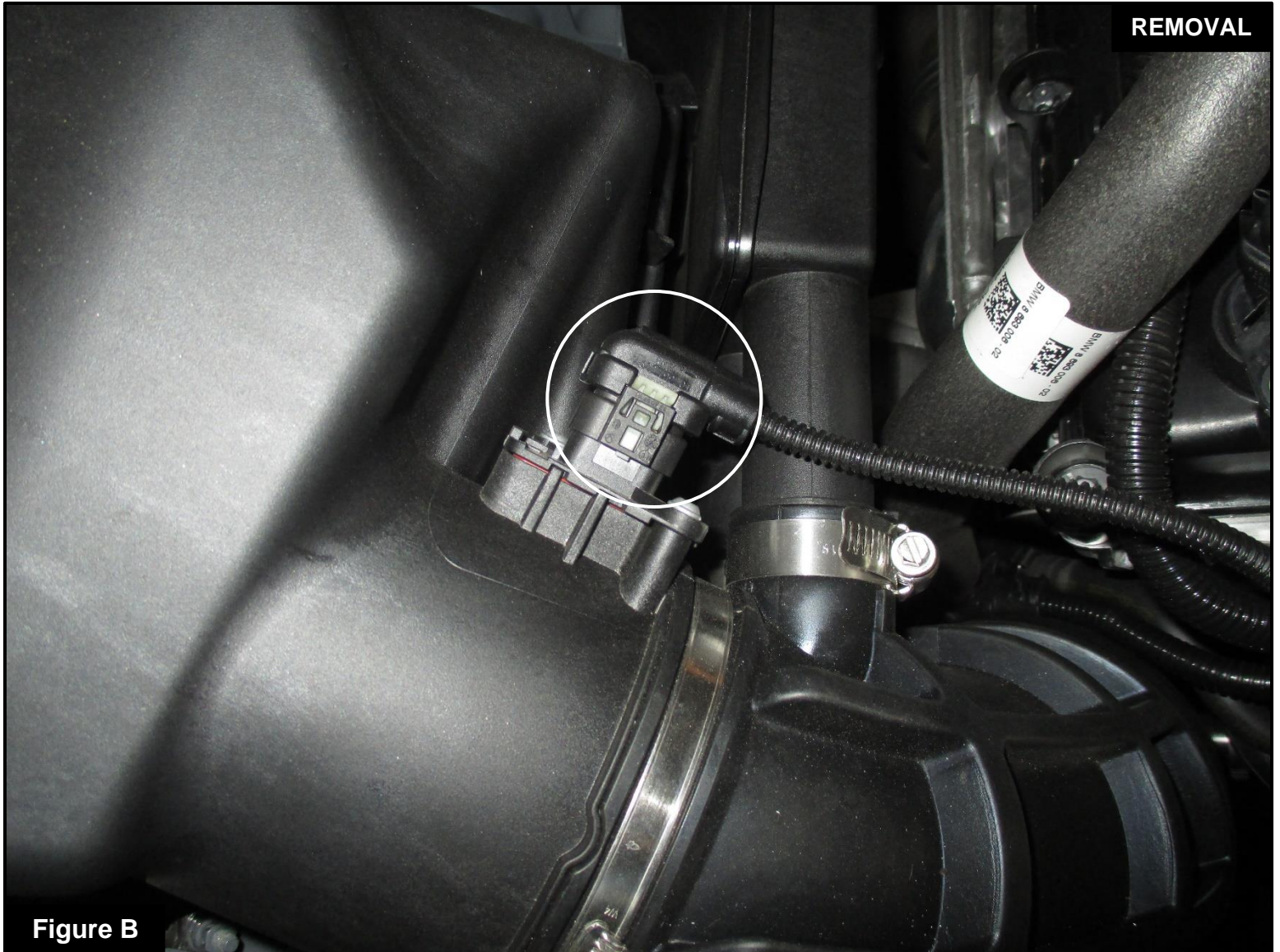


Figure B

Refer to Figure B for Step 2

Step 2: Disconnect the temperature sensor harness.

**Figure C****Refer to Figure C for Step 3**

Step 3: Loosen the hose clamp at the factory airbox, then slide the factory intake tube away from the factory airbox.

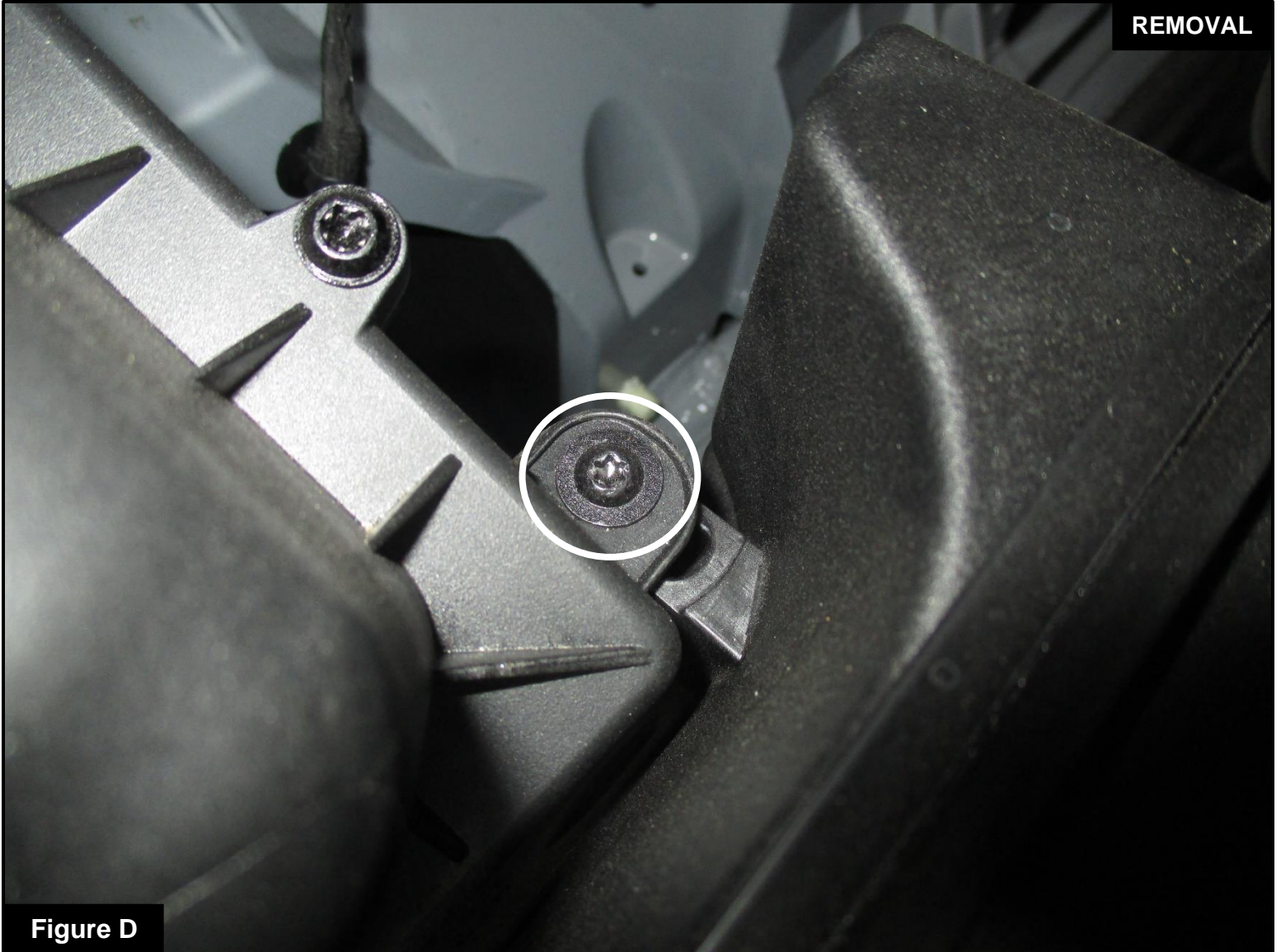
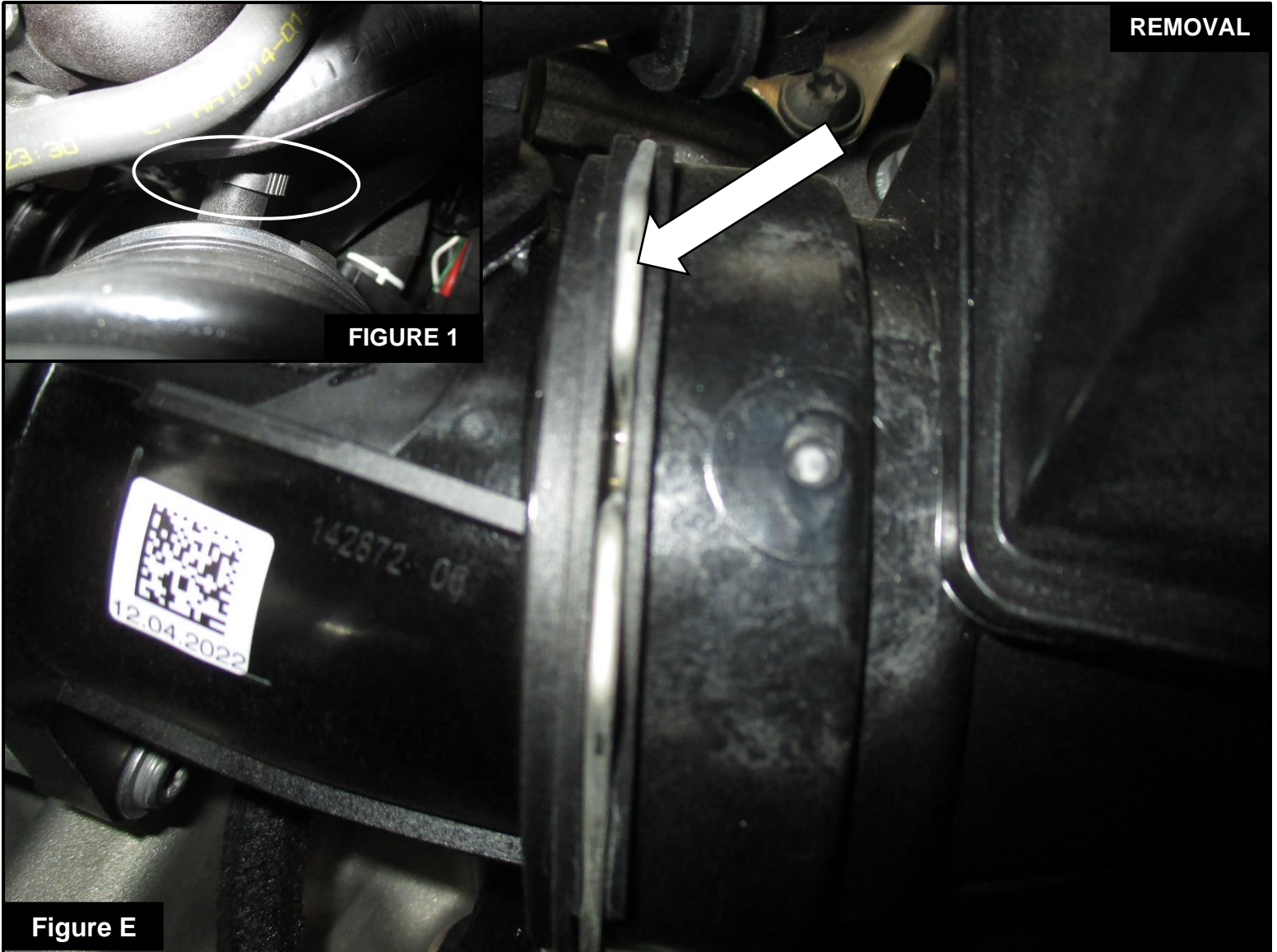


Figure D

Refer to Figure D for Steps 4-5

Step 4: Remove the screw that connects the factory airbox to the factory tube.

Step 5: Pull up on the factory airbox to remove from the engine bay.



Refer to Figure E for Steps 6-8

Step 6: Remove the retention clip securing the factory intake tube to the turbo inlet.

Step 7: Disconnect the crankcase breather line from the factory intake tube. See **Figure 1**.

Step 8: Pull the factory tube out of the vehicle.

**Figure F****Refer to Figure F for Steps 9-10**

Step 9: Transfer the temperature sensor to the aFe POWER intake tube and secure it with the provided M4 screws.

Step 10: Install the supplied fitting into the aFe POWER intake tube. **This is an NPT fitting. The small gap between the tube and hex is normal.**



Figure G

Refer to Figure G for Step 11

Step 11: Install the air filter into the aFe POWER housing by firmly pushing it into the housing until the air filter tabs lock into place. Install the clamp over the air filter flange, but do not tighten at this time.

**Figure G**

Refer to Figure G for Step 12

Step 12: This kit includes an optional plug to close off the auxiliary air inlet. Install the plug if you wish to close it off and only capture cold air from the factory inlet.

Without the plug installed, the aFe POWER intake will capture the maximum amount of air available. More airflow offers more power. However, some of this air is picked up from inside the engine compartment and could be warmer air, which can affect the performance of the vehicle.

With the plug installed on the housing, it will block off any hot engine air entering the housing to make sure only the coolest air available is directed into the engine. The noise generated by the intake will also be reduced.

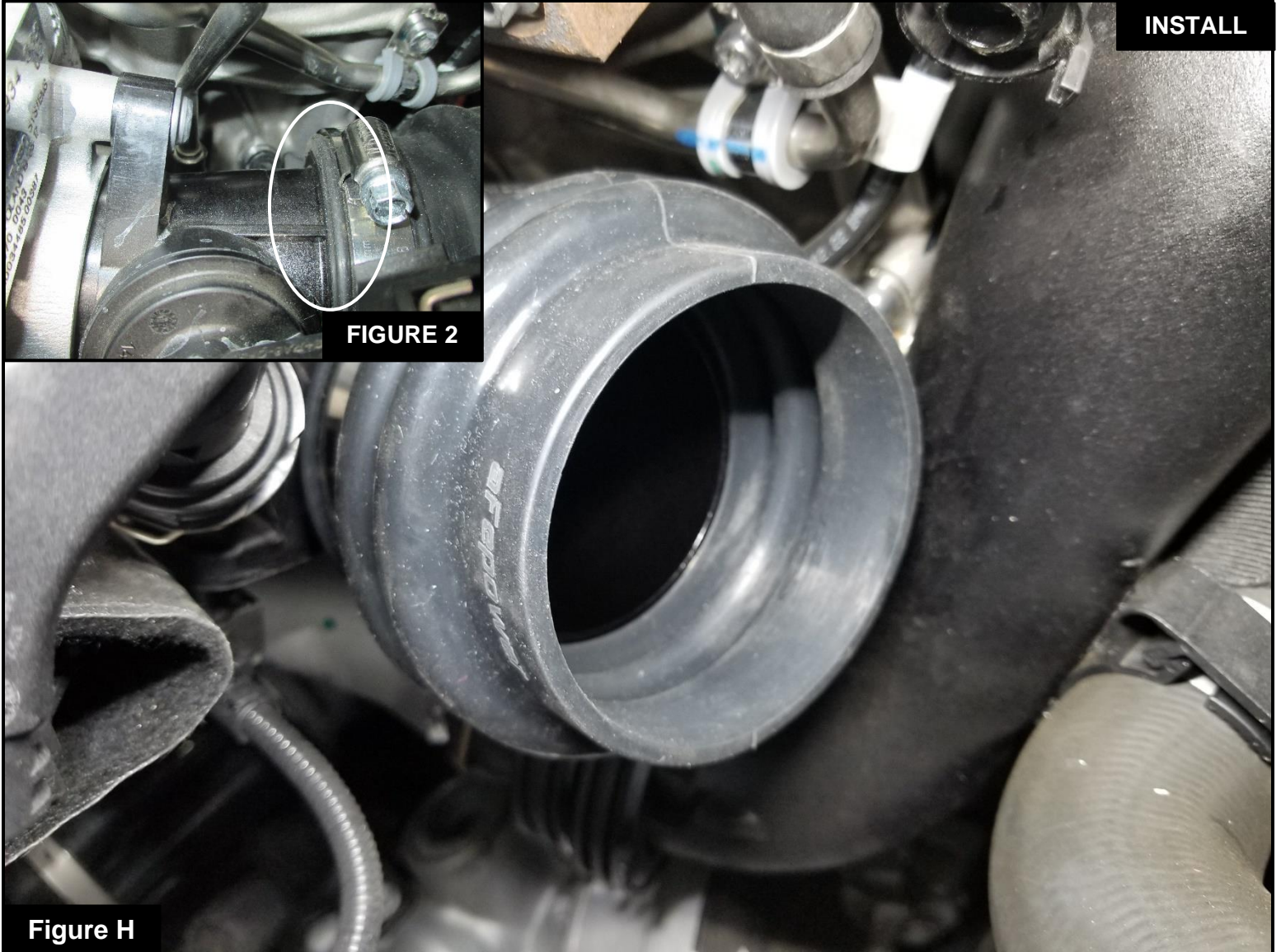


FIGURE 2

Figure H

Refer to Figure H for Steps 13-14

Step 13: Install the supplied coupling onto the turbo inlet and place the supplied clamps onto the coupling.

Make sure to have the end of the coupling sit flush to the rim of the turbo inlet. This is to make sure the interior lip of the coupling sits correctly in the groove of the turbo inlet. See **Figure 2**.

Step 14: When the coupling sits comfortably on the turbo inlet, tighten the clamp between the coupling and the turbo inlet. Do not tighten the clamp at the open end of the coupling at this time.

**Figure I****Refer to Figure I for Steps 15-17**

Step 15: Install the assembled aFe POWER intake tube into the coupling.

Step 16: Connect the crankcase breather line to the aluminum fitting on the aFe POWER intake tube.

Step 17: Tighten the clamp between the aFe POWER tube and coupling.



Figure J

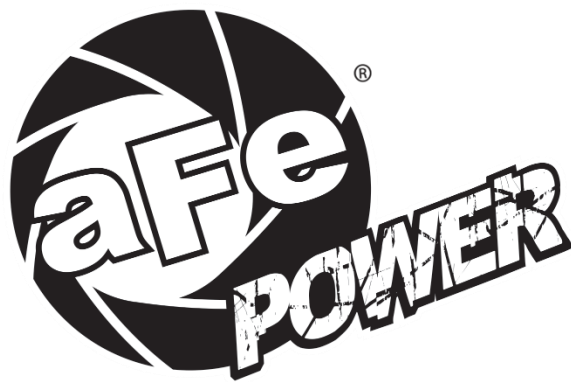
Refer to Figure J for Steps 18-22

- Step 18: Install the assembled aFe POWER housing and air filter into the engine bay by pressing down on the housing into the three factory mounting grommets.
- Step 19: Slip the aFe POWER intake tube into the air filter. Align the tube, filter and housing, then tighten the clamp between the aFe POWER tube and air filter.
- Step 20: Connect the temperature sensor harness to the temperature sensor.
- Step 21: If the vehicle is equipped with a brace, re-install the brace from **Step 1** and torque it to 37 Lbs. x ft.
- Step 22: Make sure all components and connections are secure. Your installation is now complete. Thank you for choosing aFe POWER!

NOTE: Check all bolts, clamps, and connectors are still secure after 100-200 miles.



Page left blank intentionally.



advanced FLOW engineering, inc.

Corona, CA 92879

<https://afepower.com/contact>