



# INSTALLATION INSTRUCTIONS

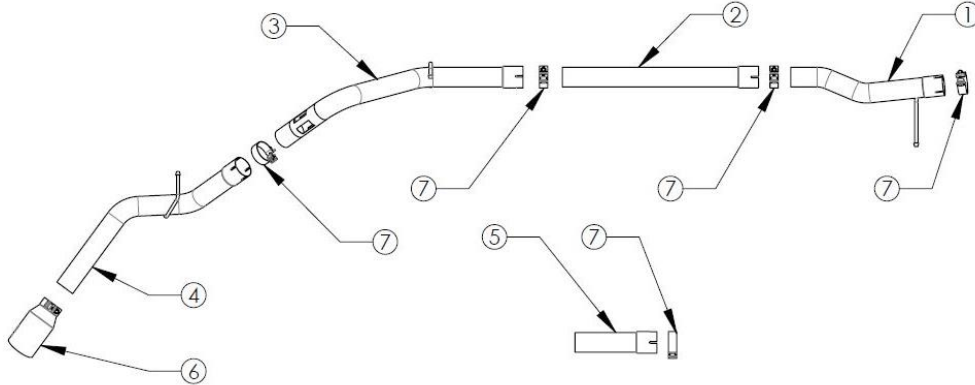
**MAKE:** GM Trucks  
**MODEL:** 1500  
**YEAR:** 2023-2024  
**ENGINE:** L6-3.0L (LZO)

**DPF-Back Exhaust**

49-44144-B

49-44144-P

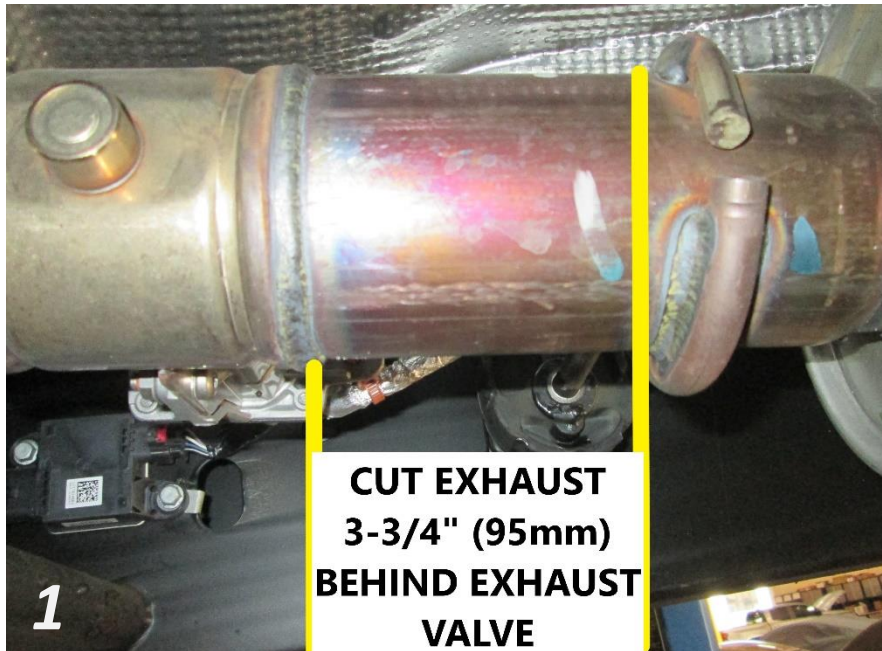
**NOTE: Requires cutting OE Exhaust**  
**Fits 147.4" and 157" Wheelbases**



Item	Description	Part Number	Quantity
1	Front Pipe	05-244515	1
2	Mid Pipe	05-244516	1
3	Over-Axle	05-244517	1
4	Tail Pipe	05-244036	1
5	Extension Pipe	05-244034	1
6	EXH Tip 3 in x 4-1/2 out x 9L Bolt on Black	49T30454-B093	1
6	EXH Tip 3 in x 4-1/2 out x 9L Bolt on Pol	49T30454-P093	1
7	Clamp, Band 3"	05-244036	5

**aFe POWER recommends professional installation on this product.** Thoroughly inspect the aFe POWER exhaust system to make sure there is no damage from shipping (if damage is noted, immediately contact aFe POWER customer service). Allow time for your vehicle to cool down prior to installation. When working on your vehicle proceed with caution. Wear protective safety equipment; eye goggles and gloves to ensure a safe installation.

Install band clamps to proper torque specifications of 40-45 ft-lb.





## INSTALLATION INSTRUCTIONS

**MAKE:** GM Trucks  
**MODEL:** 1500  
**YEAR:** 2023-2024  
**ENGINE:** L6-3.0L (LZO)

**DPF-Back Exhaust**

49-44144-B

49-44144-P

**NOTE: Requires cutting OE Exhaust  
Fits 147.4" and 157" Wheelbases**

1. **(Read instructions prior to installation.)** It is recommended to not fully tighten the exhaust until it has been fully installed. Leave loose for adjustability.
2. Secure vehicle on jack stands (refer to your manual for specified jack stand positions).
3. For faster installation, spread out the parts of the exhaust alongside your vehicle as shown in the diagram above.
4. Secure the stock exhaust with jack/stands.
5. Cut the O.E. exhaust 3-3/4" (95mm) behind the exhaust valve.
6. Undo all the O.E. isolation mounts and remove O.E. exhaust.
7. Install the front pipe behind the exhaust valve using the provided 3" band clamp.
8. Install the front pipe hanger into the OE Isolation mount.
9. For the CC/LB Install the extension pipe and provided 3" band clamp. For the CC/SB and the extension pipe is not needed.
10. Install the Mid Pipe using the provided 3" band clamp.
11. Install the Over-Axle Pipe using the provided 3" band clamp.
12. Install the Over-Axle hanger into the OE Isolation mount.
13. Install the Tail Pipe using the provided 3" band clamp.
14. Install the Tip using the Provided 3" band clamp.
15. Install the Tail Pipe hanger into the OE Isolation mount.
16. Adjust the Tip to desired position and tighten all components.
17. Ensure that all the components of the AFE POWER exhaust system are aligned and are at a safe clearance from all wires, hoses, brake lines, body parts, and tires.
18. Start from the front of the AFE POWER exhaust system and evenly tighten all clamps and fasteners.
19. Start the vehicle and check for any leaks. If any leaks are found, determine the cause and repair as necessary.
20. Remove vehicle from jacks stands.
21. It is recommended to re-tighten all clamps and hardware after 50-100 miles.