

OPTIONAL E-LOCK WIRING INSTALL - KEYLESS ENTRY

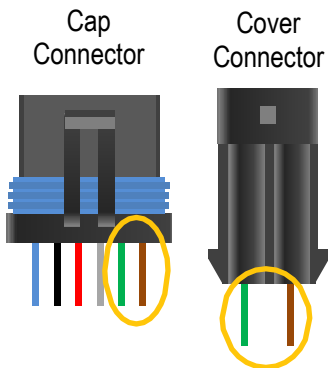
CHEVY/GMC 1500 – MODEL YEAR 2019 – 2021

CHEVY 1500 LTD Only – MODEL YEAR 2022

GMC 1500 Limited Only – MODEL YEAR 2022

LOCKING WIRE: Connect the **Green** wire from the A.R.E. Disconnect Harness to the 18AWG Gray wire.

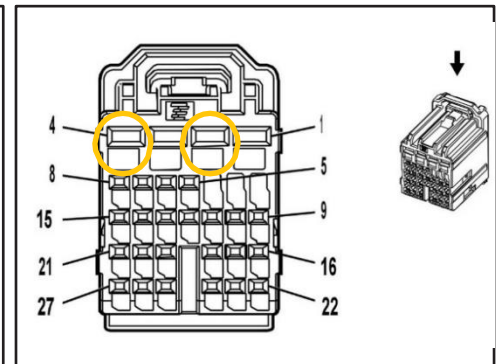
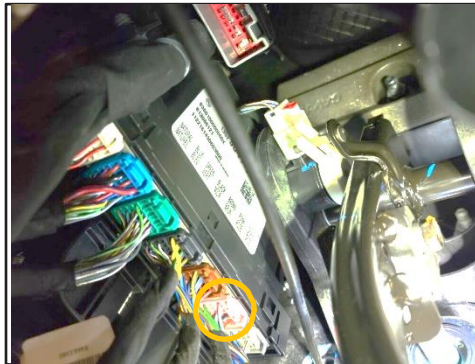
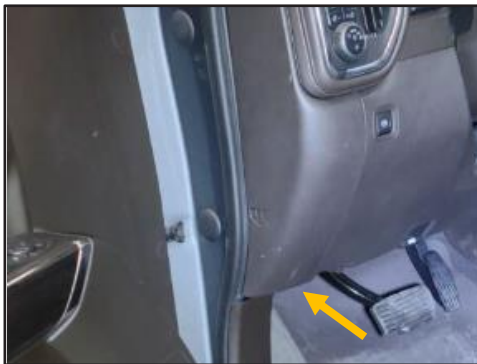
UNLOCKING WIRE: Connect the **Brown** wire from the A.R.E Disconnect Harness to the 18AWG Brown-Yellow wire.



**A.R.E. HARNESS
CONNECTOR**

FUNCTION	A.R.E. HARNESS COLOR		PIN	CIRCUIT	PRIMARY COLOR	STRIPE COLOR	GAUGE
Lock	Green	→	2	295	Gray	---	18
Unlock	Brown	→	4	294	Brown	Yellow	18

LOCATION: Located behind the driver side of the instrument panel outboard of the steering wheel. Pink connector.



Notes: For Model year 2019 Chevy Silverado LD and GMC Sierra 1500 Limited use 2014-2018 Installation Sheet