

SINISTER **DIESEL**



2004.5-2005 GM
6.6L DURAMAX LLY
EGR COOLER



WARNING REGARDING EMISSIONS LAWS

Not legal for sale or use on pollution-controlled motor vehicles anywhere in the United States. Legal ONLY for off-road competition racing vehicles and cannot be used on vehicles that are operated on public streets, roads, or highways.



DISCLAIMER

1) By installing this product onto your vehicle, you assume all risk and liability associated with its use.

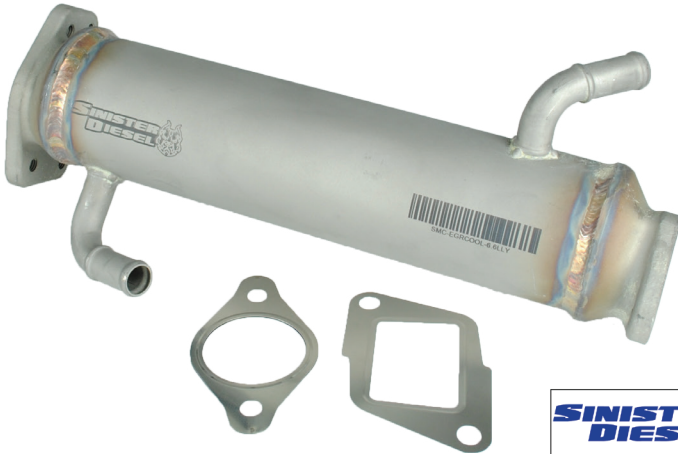
2) It is your responsibility to make sure your vehicle complies with all federal, state, and local emissions laws. Federal and many state and local laws prohibit the removal, modification or rendering inoperative of any part of the design affecting emissions or safety on motor vehicles used on a public street or highway. Violation may result in a fine of up to \$32,500 per vehicle (or possibly higher depending on changes in the law). All civil penalties and fines for removing your vehicle's emissions equipment are the sole responsibility of the end user.

3) Sinister Mfg Company, Inc. is not responsible for misuse of its products. By installing this product, you release Sinister Mfg Company, Inc. of any and all liability associated with its use.

4) Depending on where you live, restrictions may apply. Check all applicable laws before installing or using!

5) The purchaser and end user releases, indemnifies, discharges and holds harmless Sinister Mfg Company, Inc. from any and all claims, damages, causes of action, injuries, or expenses resulting from or relating to the use or installation of this product that is in violation of the terms and conditions on this page, the product disclaimer, and/or the product installation instructions. Sinister Mfg Company, Inc. will not be liable for any direct, indirect, consequential, exemplary, punitive, statutory, or incidental damages or fines caused by the use or installation of this product.

GM LLY Duramax EGR Cooler



PACKING LIST:

Description

- EGR Cooler
- Two Gaskets
- EO Sticker

Read all instructions prior to install.

Note: *Prior to installation, please compare the parts that you have received with the bill of materials provided on this page to assure that you have all the parts necessary for the installation.*



CAUTION!!! Never work on a hot vehicle. Serious injury in the form of burns can result if the vehicle has been in use. Allow vehicle to cool prior to installation. Always wear eye protection when working on or under any vehicle.

Note: With a used vehicle, we suggest using a penetrating spray lubricant to be applied liberally to all exhaust fasteners. When doing so allow a significant amount of time for the chemical to lubricate the threads before attempting to disassemble. On your application these are the bolts in step 8, located on the rear passenger side of the engine.

Step 1: Disconnect Batteries

Step 2: Drain coolant

Step 3: Remove intake resonator by loosening hose clamp and support bolt. (Image 1)



Image 1

Step 4: Disconnect the mass air flow sensor. Remove the intake tube by loosening the hose clamps on the intake tube. (Image 2)



Image 2

Step 5: Remove zip ties and pull wiring away from intake charge tube. (Image 3)



Image 3

Step 6: Remove the intake tube from the vehicle. The intake tube is held in place by one hose clamp and six bolts. Two bolts secure the flange at one end and the four remaining bolts secure the intake tube to the EGR Valve. (Image 4)

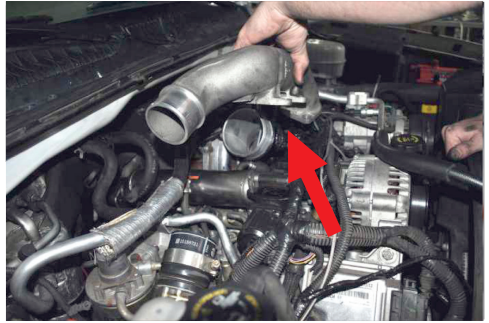


Image 4

Note: Stuff a clean rag in the rubber boot to keep debris out of the intake system.

Step 7: Remove the PCV hose on passenger side of truck. (Image 5)



Image 5

Step 8: Remove the four bolts and nuts near the firewall that secure the EGR cooler in place.

Step 9: Remove the two bolts and nuts that hold the EGR valve to the motor. Disconnect all coolant lines running to the EGR cooler. The entire EGR assembly can now be pulled up and out. (Image 6)



Image 6

Step 10: Remove the EGR valve from the factory cooler and install it onto the new Sinister EGR cooler. Be sure to remove the old gasket and use the supplied new one to properly seal the two mating surfaces. (Image 6)



Step 11: Replace the EGR cooler and valve onto the motor. Re-install the two bolts and nuts that secure the EGR valve to the motor. Again use the supplied new gasket to properly seal the connection. Then reconnect the coolant lines to the EGR cooler.



Image 7

Step 12: Re-install the four bolts near the firewall that secure and connect the EGR cooler to the exhaust up pipe.

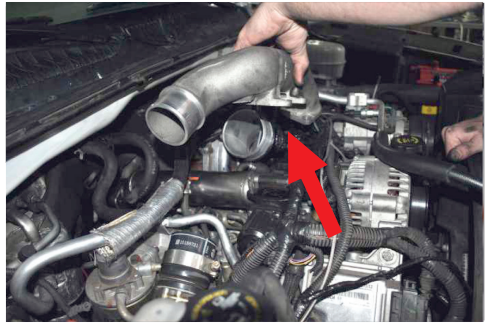


Image 8

Step 13: Reinstall the PCV Hose on the passenger side of the truck. (*Image 7*)

Step 14: Re-install the cast intake tube. Secure the six fastening points and secure the hose clamp on the rubber boot. (*Image 8*)

Step 15: Re-secure the wiring to the cast intake tube with zip ties. (*Image 9*)



Image 9

Step 16: Re-install the intake tube and reconnect the mass air flow sensor. Secure both of the hose clamps. (*Image 10*)



Image 10

Step 17: Re-install the resonator box. Secure the support bolt and tighten the hose clamp.
(Image 11)

Step 18: Place EO sticker on the plastic cover above the radiator area.
(Image 12)

Step 19: Reconnect batteries and refill coolant to factory specifications. Test run the vehicle and double check the coolant level. Remember to periodically check your vehicles coolant.

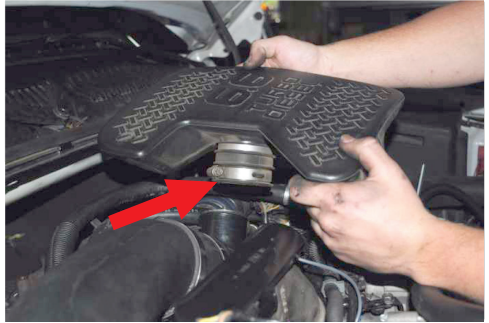


Image 11



Image 12



2025 Opportunity Dr.
Roseville CA, 95678
877-692-4110 - SinisterDiesel.com