



Installation Instructions

Part No. **1438**

Product: Running Boards

Application: **Chevy Traverse 2024 – Present**

Level of Difficulty: 1 2 **3** 4 5

Installation Time: 90 Min.

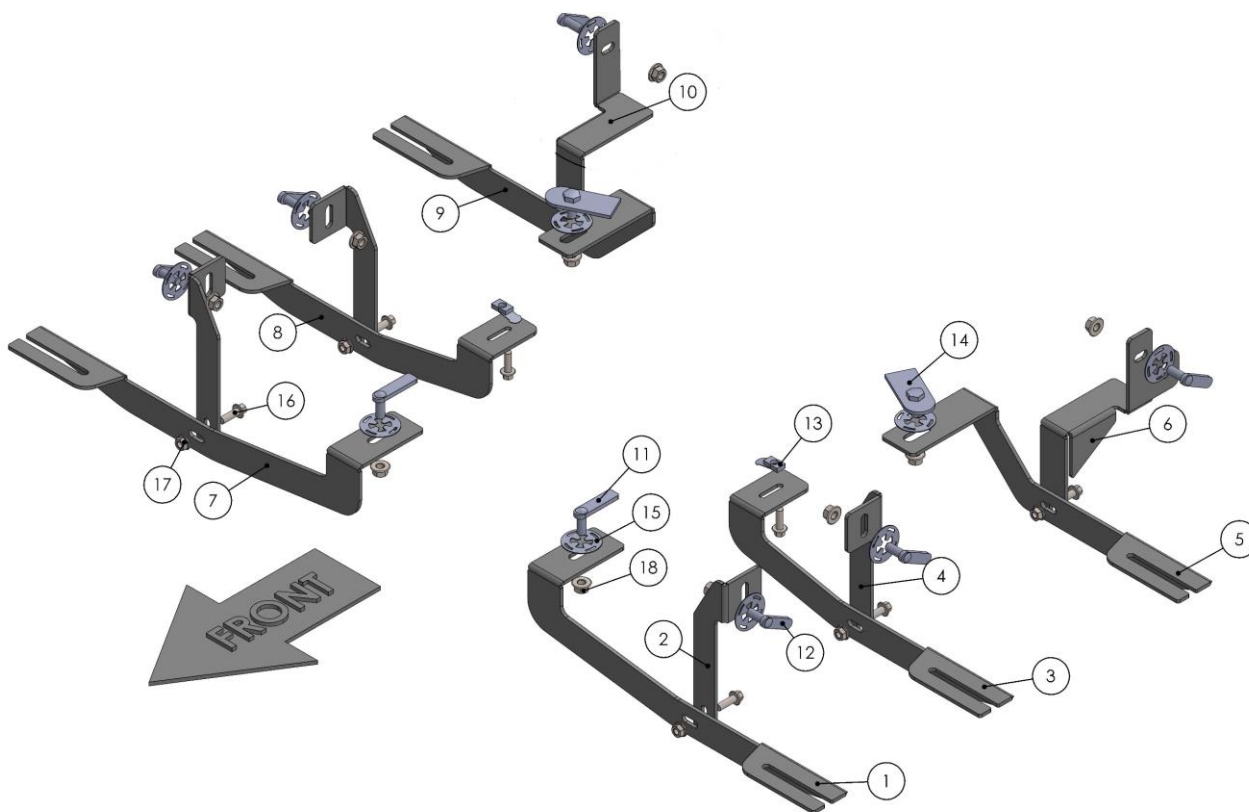
REV 1 12/01/24

Hardware	Torque Aluminum	Torque Steel to Steel
M6 Bolt	3 ft-lbs.	14 ft-lbs.
M8 Bolt	7 ft-lbs.	35 ft-lbs.
M10 Bolt	16 ft-lbs.	64 ft-lbs.
M12 Bolt	28 ft-lbs.	112 ft-lbs.

ATTENTION: Use correct torque settings to avoid damaging the running boards and or mounting brackets. Failure to do so will void your warranty. If you have any questions, please contact our technical team at 1-866-717-6645

Attention: Please make sure that you have the latest instructions from **Romik.com**

QR Scan



1



**DRIVER SIDE
FRONT BRACKET
1 x QTY**

2



**DRIVER/PASSENGER SIDE
FRONT/CENTER BRACKET
2 x QTY**

3



**DRIVER SIDE
CENTER BRACKET
1 x QTY**

4



**DRIVER/PASSENGER SIDE
CENTER/FRONT BRACKET
2 x QTY**

5



**DRIVER SIDE
BACK BRACKET-1
1 x QTY**

6



**DRIVER SIDE
BACK BRACKET-2
1 x QTY**

7



**PASSENGER SIDE
FRONT BRACKET
1 x QTY**

8



**PASSENGER SIDE
CENTER BRACKET
1 x QTY**

9



**PASSENGER SIDE
BACK BRACKET-1
1 x QTY**

10



**PASSENGER SIDE
BACK BRACKET-2
1 x QTY**

HARDWARE

11



**HTC 262
M10x30 (5x15x60)
2x**

12



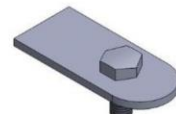
**HTC 243
M10x25 (4x12x50)
6x**

13



**HTC 311
M8 (21.3x11.75)
2x**

14



**HTC 284
M10x25 (4x80x35)
2x**

15



**HTC 269
M10 CLIPS
10x**

16



**M8x25 HEX
FLANGE BOLT
8x**

17



**M8 HEX
FLANGE NUT
6x**

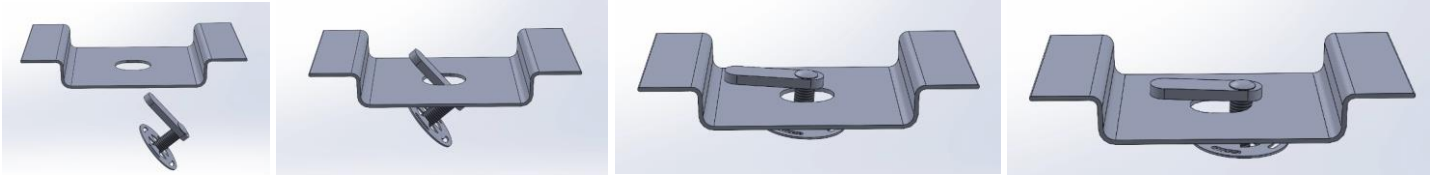
18



**M10 HEX
FLANGE NUT
10x**

Installation Instructions 1438 Chevy Traverse

Important Install Tip: When installing Romik HTC inserts follow the sequence below. Make sure the HTC is seated correctly and do not use power tools as this will only spin the insert and possibly damage it. Test by tugging on it before installing bracket. Blue loctite is highly recommended on all metal parts.



Step 1: Due to the body design on this vehicle, there is a visible gap. Please review images on www.Romik.com before installing.

Pre-assemble brackets before starting the installation. Note Front bracket is longer than middle bracket



Front Driver side

Middle Driver side

Rear Driver Side

Step 2: Locate front mounting locations and hardware as per 1st page of this installation manual

Step 3: Install provided HTC 263 as shown on Figure 1.

Step 4: Remove factory rubber plug as shown on Figure 2 Install provided HTC 243 as shown

Step 5: Installed pre-assembled front bracket. Make sure hardware is hand tight only Figure 3.

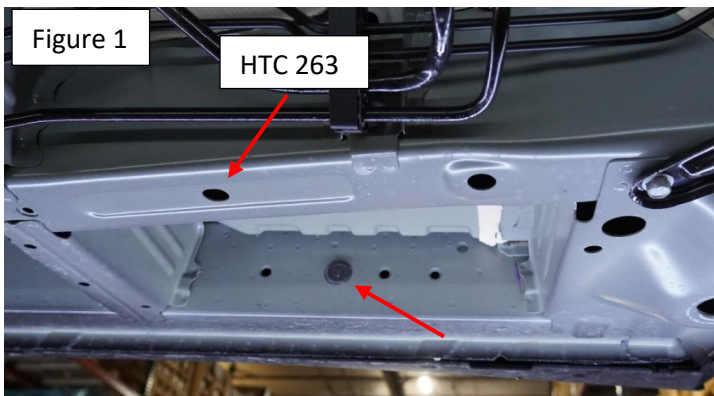


Figure 1

HTC 263

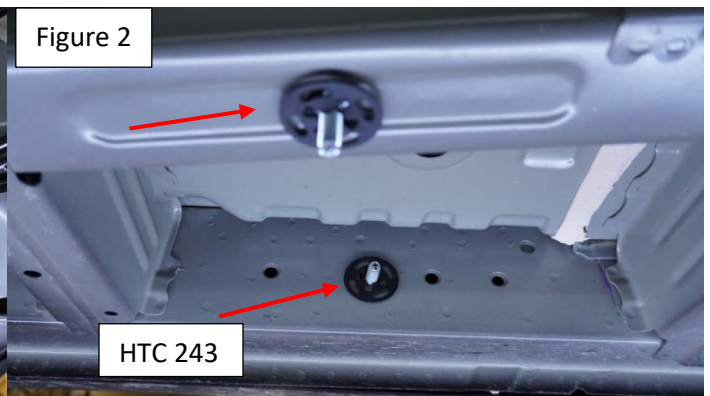


Figure 2

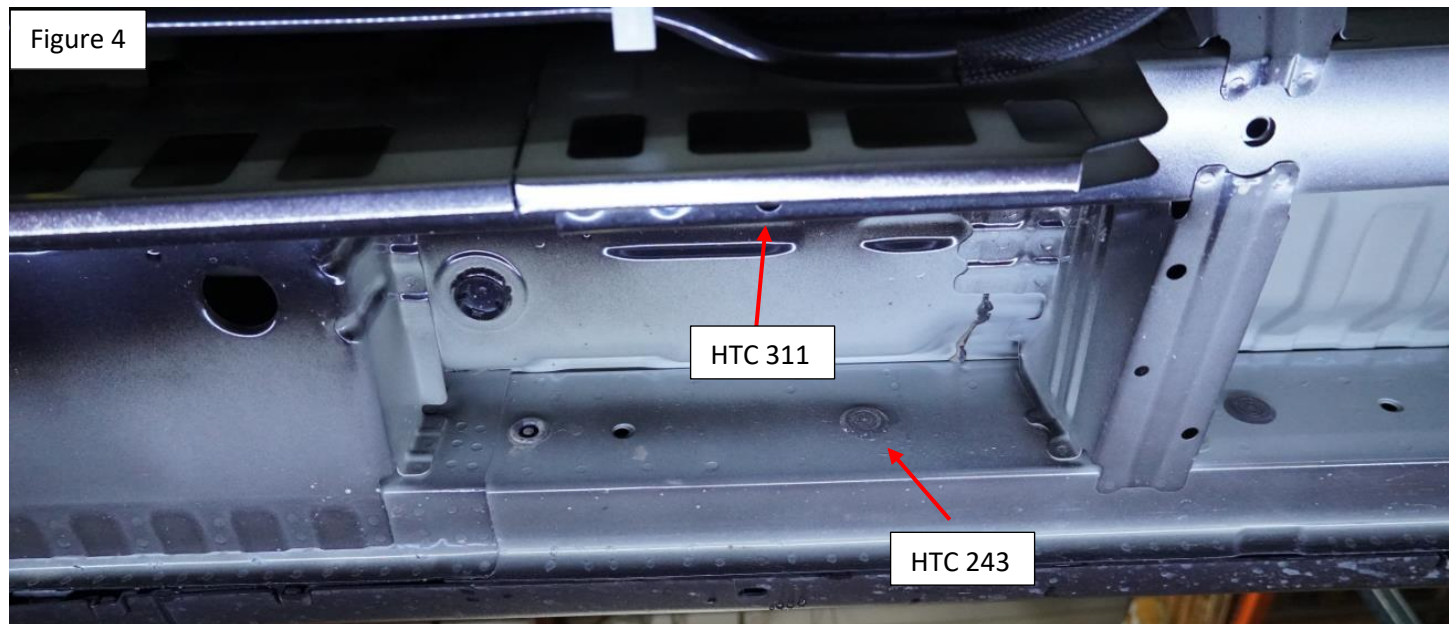
HTC 243



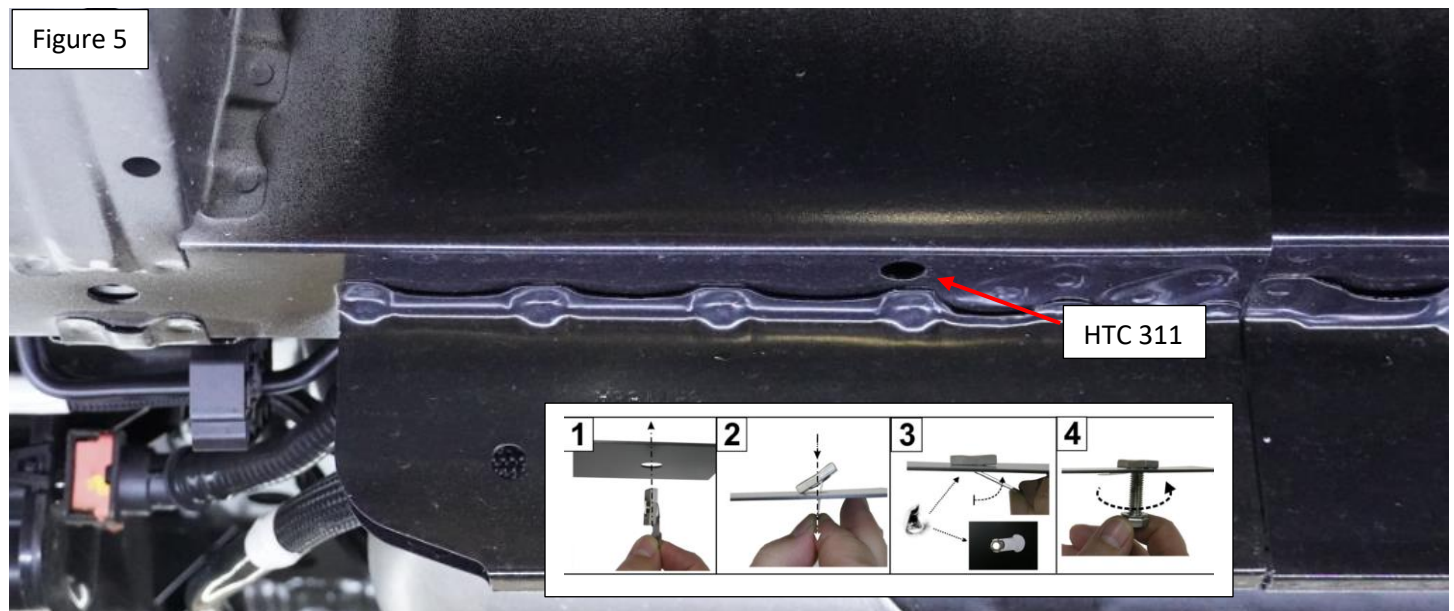
Figure 3

Installation Instructions 1438 Chevy Traverse

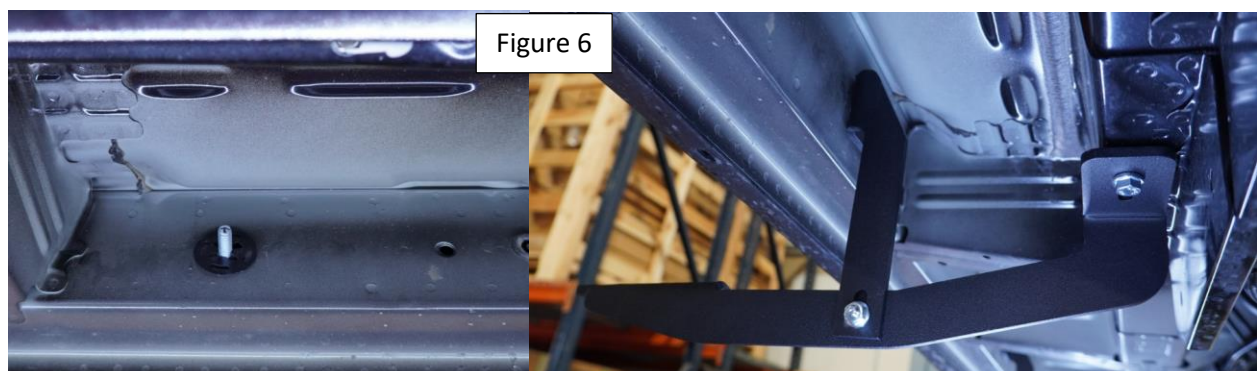
Step 6: Locate middle bracket position, remove factory rubber plug Figure 4.



Step 7: Install provided HTC 311 as shown Figure 5.

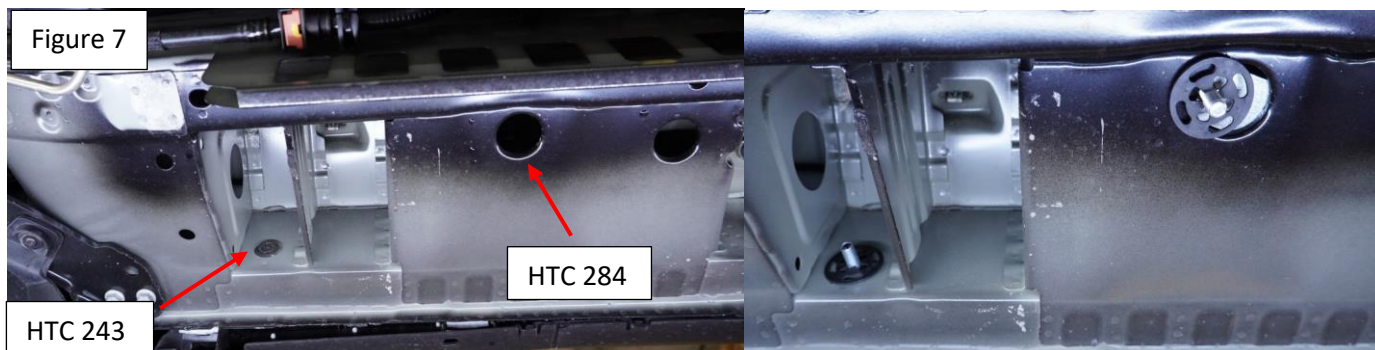


Step 6: Install provided HTC 243 and Install pre-assembled middle bracket hand tight only Figure 6.



Installation Instructions 1438 Chevy Traverse

Step 7: Locate rear bracket position Figure 7, Install provided HTC 284. Remove factory rubber plug and install provided HTC 243 Figure 10.



Step 8: Install pre-assembled rear bracket hand tight only as show Figure 8.



Step 9: Proceed to last page of this manual for running board install instructions.

Step 10: Once running boards are installed and centered, proceed to tighten the mounting brackets. Follow torque values, tighten in 1-3-2 (front – rear – center) sequence.

For Technical support please call our team at 1-866-717-6645 and one of our experts will assist you with this installation.

Thank you for choosing Romik.

Installation Instructions Running Boards

NOTE: Use of power tools will damage the bottom of the running board and void your warranty.

Step 1: loosen the M8 hardware on back of the running boards.

Step 2: Slide running board onto brackets

Step 3: Tighten hardware to 7 ft lbs.

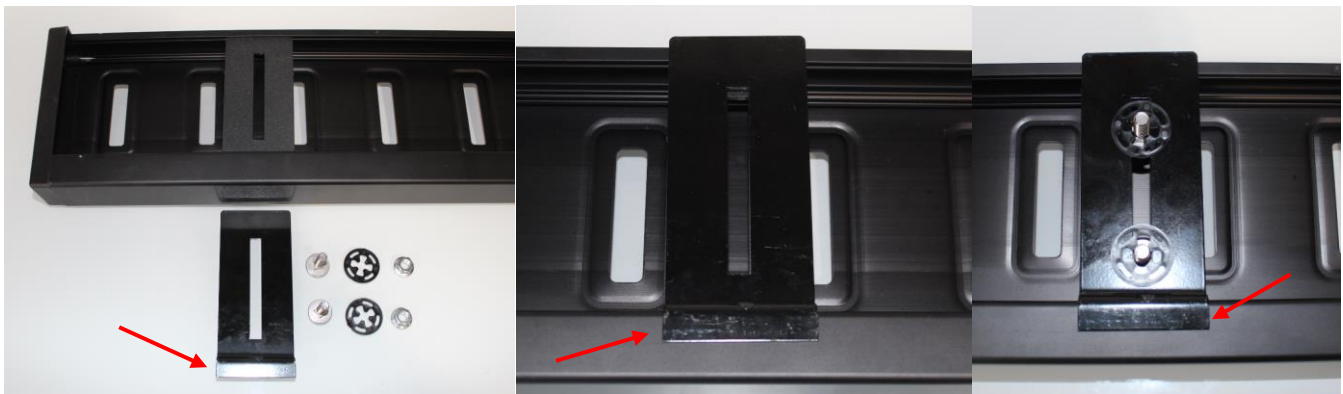


ROF/RPD/ROB Running boards

Step 1: Place clamping plate on top of running board as shown below. Make sure clamping plate sits correctly on running board surface.

Step 2: Install carriage bolts and plastic retaining clips as shown below.

Step 3: Install and tighten hardware to 7 ft lbs.



Product Registration and Warranty Information

- Register your Romik products at <https://romik.com/productregistration>
- Warranty information at <http://www.romik.com/warranty>



Cleaning and maintaining your Romik Running boards

Cleaning and maintaining your running boards is important, apply a light coat of a quality carnauba wax at least 2X per year. Wash often with mild soap and make sure to remove all soap residue. Many car automatic carwashes use a strong soap, make sure to use enough water to remove all residue.

For video instructions on how to clean your Romik products please click here <https://romik.com/cleaning>