



BRIGHT IS ONLY THE BEGINNING

INSTALL GUIDE

XB EVO TYPE F2 SAE FOG LIGHTS

LF094/LF095



WARNING: IT IS THE INSTALLERS RESPONSIBILITY TO CONFIRM COMPLIANCE WITH STATE AND LOCAL LAWS. BY READING THIS DOCUMENT, YOU AGREE IT IS ONLY TO BE USED AS AN EDUCATIONAL GUIDE. MORIMOTO LIGHTING NOR ITS DEALERS MAKE GUARANTEES ON ANY FINISHED RESULTS, NOR ARE THEY TO BE HELD RESPONSIBLE FOR ANY DAMAGE, MISUSE, OR PERSONAL INJURIES. IF YOU ARE UNABLE TO CLEARLY UNDERSTAND AND ADAPT THE INFORMATION BELOW, PROFESSIONAL INSTALLATION IS RECOMMENDED.



XB EVO TYPE F2 SAE FOG LIGHTS

TABLE OF CONTENTS	PAGE
LAMIN-X FILM INSTALLATION (OPTIONAL) -----	3
FACTORY FOG LIGHT REMOVAL -----	4
FOG LIGHT SETUP -----	6
INSTALLATION -----	7
AIMING -----	9

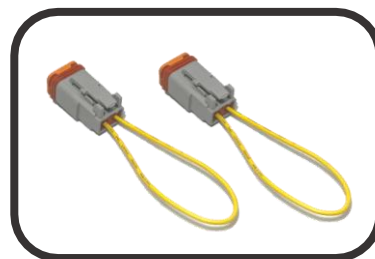
WHAT'S INCLUDED



2X (ONE PAIR) FOG LIGHT ASSEMBLIES



2X 9005/9006/H10 CONNECTORS



2X YELLOW OUTPUT KEYS (EVO+ MODEL ONLY)



REQUIRED TOOLS

- **#2 PHILLIP'S HEAD SCREWDRIVER**
- **THIN PRY TOOL**

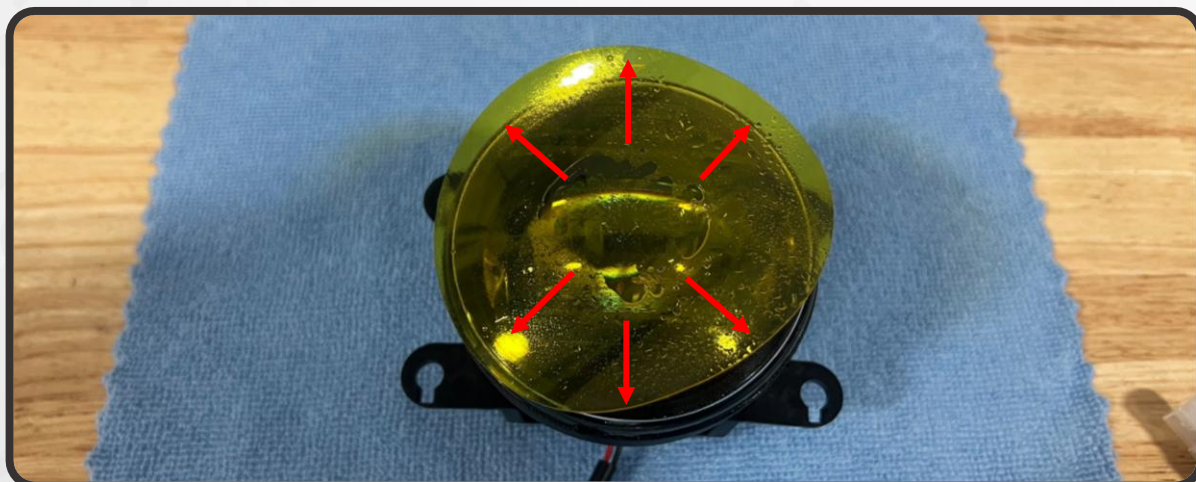


LAMIN-X FILM INSTALLATION (OPTIONAL)

1. TO APPLY LAMIN-X FILM (SOLD SEPARATELY) TO YOUR FOG LIGHTS BEFORE INSTALLING, BEGIN BY PEELING THE PAPER BACKING OFF OF THE FILM, AND LIGHTLY MIST THE ADHESIVE SIDE OF THE FILM WITH WATER. TRY TO DIRECTLY TOUCH THE ADHESIVE AS LITTLE AS POSSIBLE



2. HOLDING ONTO THE VERY EDGES OF THE FILM, CENTER IT ON THE FOG LIGHT LENS AND PRESS DOWN GENTLY IN THE CENTER TO SECURE IT. USE YOUR THUMBS TO PRESS OUTWARD TO SMOOTH OUT THE FILM AND SECURE IT TO THE FOG LIGHT LENS



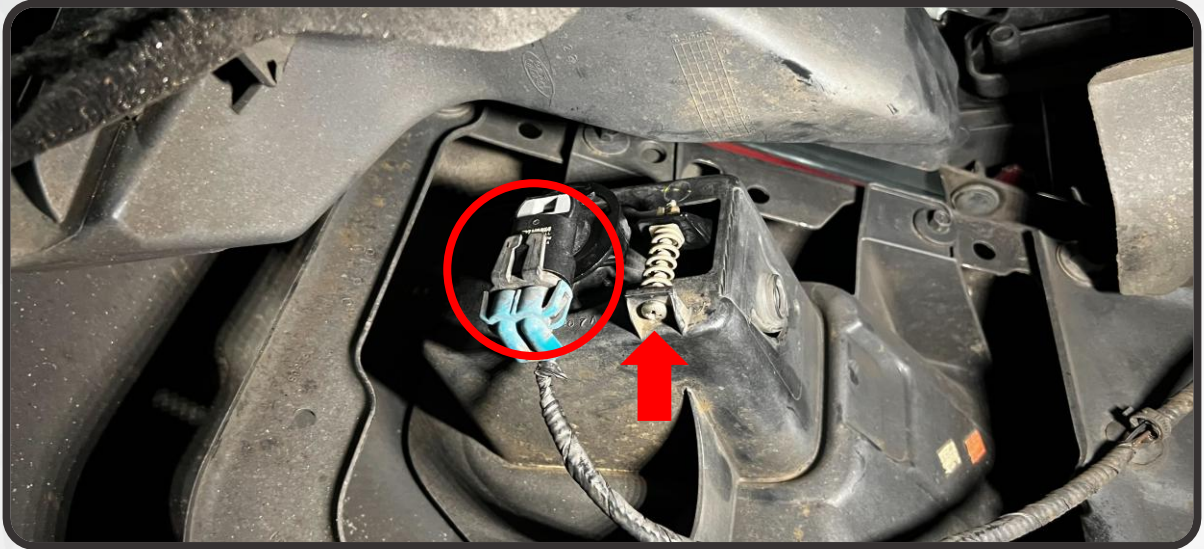
3. IF NECESSARY, USE A BLOW DRYER OR HEAT GUN ON LOW SETTING TO SLIGHTLY HEAT THE LAMIN-X AND PRESS ANY LIFTING AREAS



FACTORY FOG LIGHT REMOVAL

NOTE: THIS GUIDE IS MEANT TO SERVE AS A GENERAL OVERVIEW OF THE INSTALLATION PROCESS, HOWEVER THE FULL INSTALL PROCEDURE WILL VARY BETWEEN VEHICLES. CONSULT YOUR SERVICE MANUAL FOR APPLICATION-SPECIFIC INSTRUCTIONS

1. BEGIN BY ACCESSING THE REAR OF THE FACTORY FOG LIGHT ASSEMBLY AND DISCONNECTING THE FACTORY FOG LIGHT CONNECTOR. UNSCREW THE ADJUSTER PHILLIPS HEAD SCREW AND REMOVE IT AND THE ADJUSTER SPRING AS WELL



2. SLIDE A THIN PRY TOOL IN BETWEEN THE SIDE OF THE FOG LIGHT ASSEMBLY AND THE FOG LIGHT BEZEL. PRY OUTWARDS TO RELEASE THE TAB ON THE SIDE OF THE ASSEMBLY. REPEAT ON THE OPPOSITE SIDE OF THE ASSEMBLY TO RELEASE THE OTHER TAB



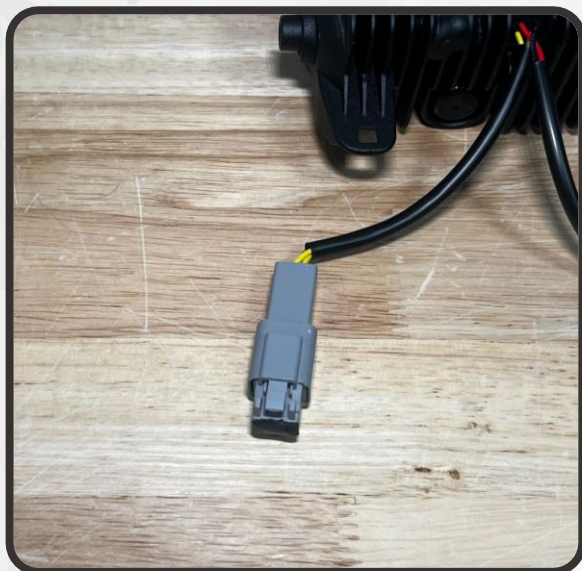
FACTORY FOG LIGHT REMOVAL

3. WITH BOTH TABS RELEASED, PULL THE FACTORY FOG LIGHT ASSEMBLY FORWARD, OFF OF THE VEHICLE. REPEAT STEPS 1-3 ON THE OPPOSITE SIDE



FOG LIGHT SETUP

4. (EVO+ MODEL ONLY) SWITCH BETWEEN WHITE AND YELLOW OUTPUT BY SWAPPING BETWEEN THE INCLUDED COLOR KEYS. OUT OF THE BOX, THE LIGHTS WILL HAVE THE WHITE KEY INSTALLED. INSTALL YOUR PREFERRED KEY ONTO THE GREY 2-PIN CONNECTOR ON THE BACK OF THE LIGHT. THIS CAN BE CHANGED LATER IF DESIRED. MAKE SURE THE VEHICLE AND FOG LIGHTS ARE OFF BEFORE SWAPPING BETWEEN COLORS

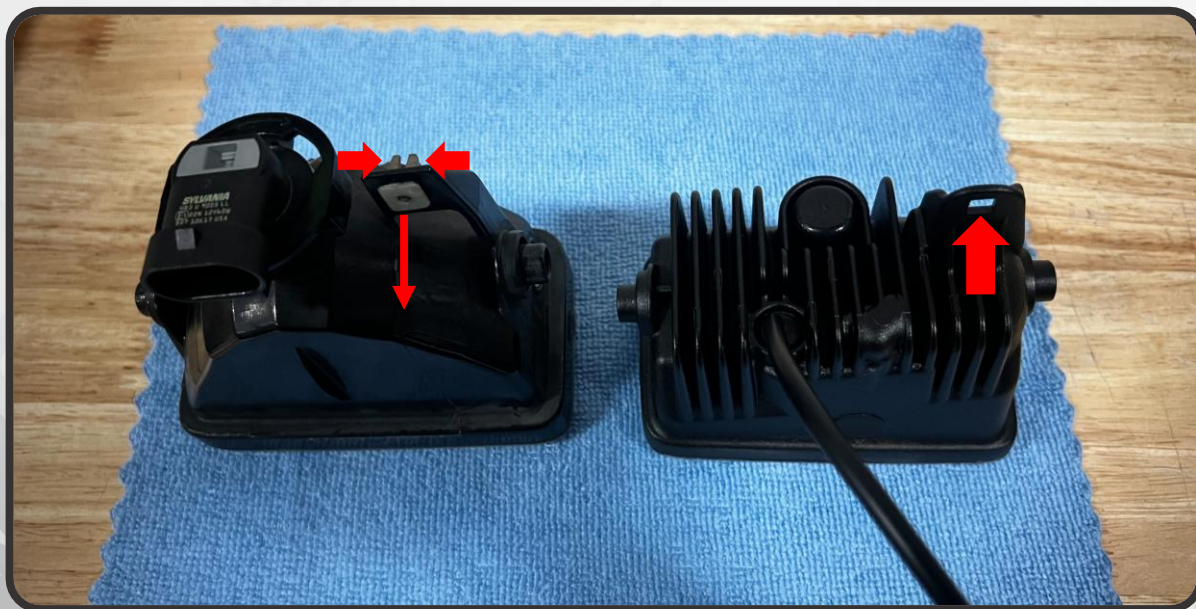


WHITE



YELLOW

5. ON THE FACTORY FOGLIGHT ASSEMBLY, PINCH THE TOP OF THE ADJUSTER CLIP AND PULL IT DOWN TO REMOVE IT. TRANSFER THE CLIP OVER TO THE NEW MORIMOTO FOGLIGHT ASSEMBLY. DO THIS FOR BOTH FOGLIGHTS

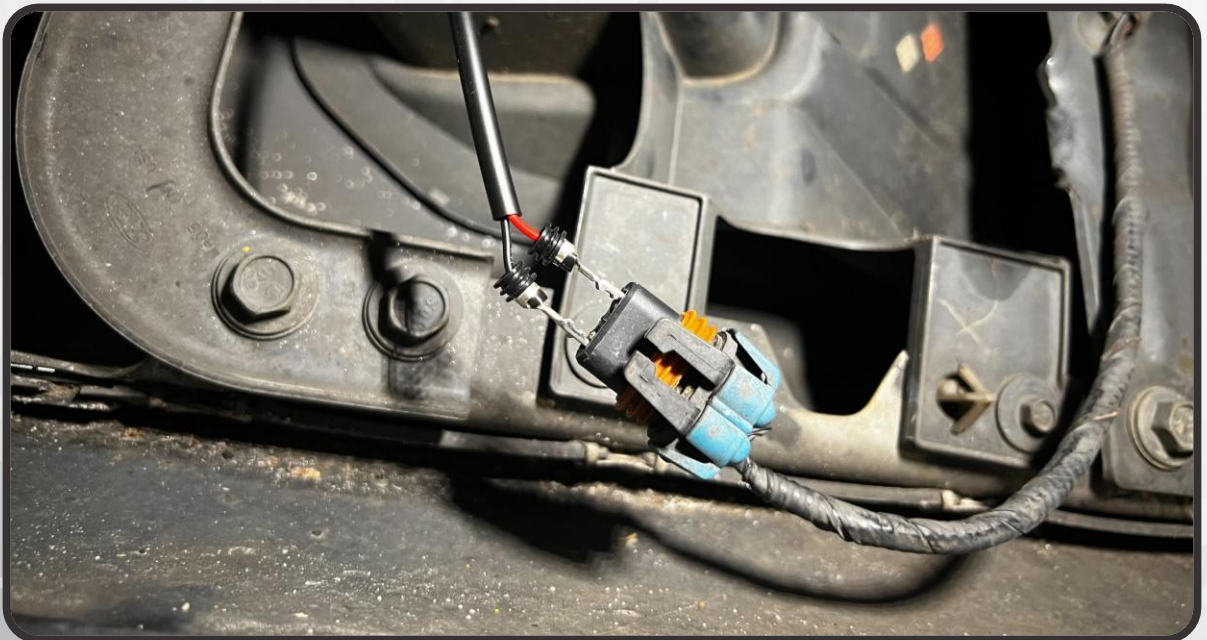


INSTALLATION

6. INSERT THE NEW FOG LIGHTS INTO THE FACTORY FOG LIGHT BEZELS, ENSURING THAT THE TAB ON EITHER SIDE OF EACH FOG LIGHT CLIPS INTO PLACE

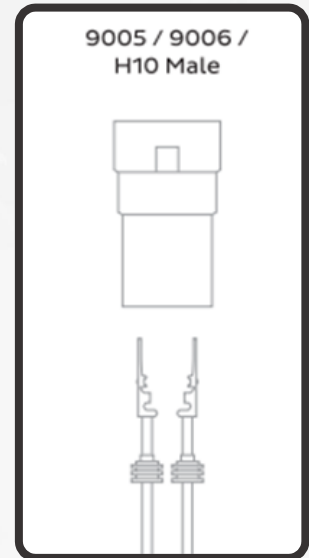


7. INSERT THE BARE PINS ON THE FOG LIGHT ASSEMBLY INTO THE STOCK FOG LIGHT CONNECTOR. MAKE SURE THAT THE PINS ARE NOT CONTACTING ONE ANOTHER, AND TEST THE FOG LIGHTS. IF THEY ARE NOT ILLUMINATING, SWAP THE PINS

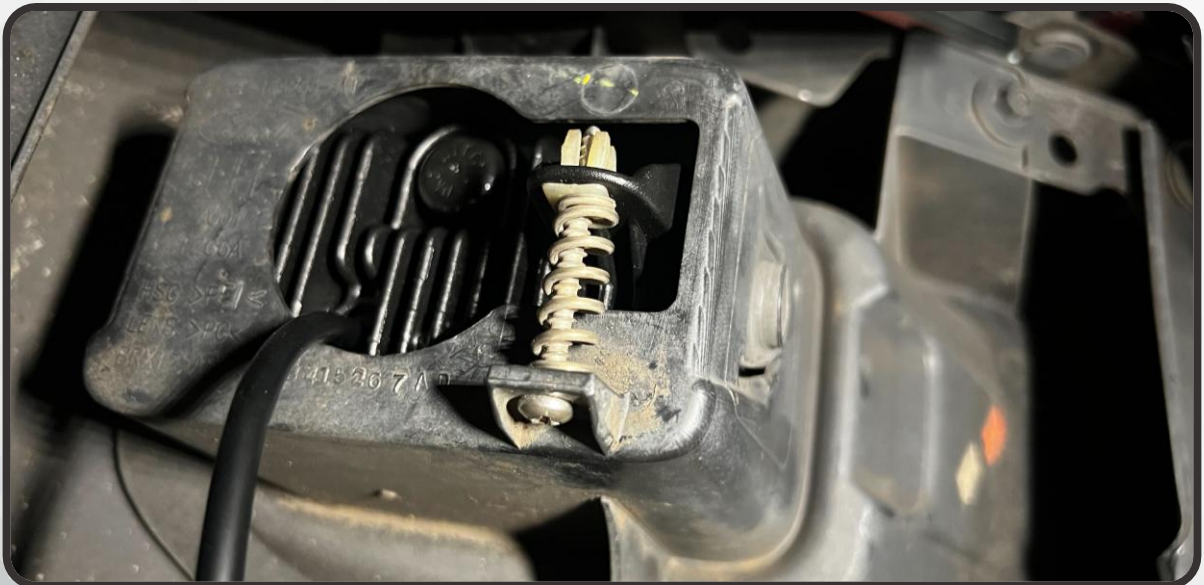


INSTALLATION

8. INSERT THE FOG LIGHT PINS INTO THE CONNECTOR IN THE SAME ORIENTATION YOU TESTED AND CONFIRMED ON THE FACTORY WIRING. WITH THE PINS INSERTED INTO THE CONNECTOR, CONNECT THE FOG LIGHT WIRING TO THE FACTORY WIRING



9. POSITION THE ADJUSTER SPRING IN BETWEEN THE ADJUSTER MOUNTS ON THE FOG LIGHT ASSEMBLY AND FOG LIGHT BUCKET. INSERT THE ADJUSTER SCREW THROUGH THE SPRING AND INTO THE ADJUSTER CLIP AND THREAD IT IN A FEW TURNS



10. REPEAT STEPS 6-9 ON THE OTHER FOG LIGHT
11. GET IN THE VEHICLE AND CONFIRM THAT ALL FUNCTIONS ARE WORKING PROPERLY
12. REASSEMBLE ANYTHING ON THE VEHICLE YOU REMOVED DURING THE INSTALL PROCESS



AIMING

- ONCE YOUR FOG LIGHT ASSEMBLIES ARE INSTALLED, THEY WILL NEED TO BE AIMED FOR YOUR VEHICLE. FOLLOW THE PROCEDURE BELOW TO AIM YOUR FOG LIGHTS USING A PHILLIPS HEAD SCREWDRIVER TO TURN THE ADJUSTER SCREW ON THE ASSEMBLY



- WITH THE CAR PARKED ON LEVEL GROUND, 25' FROM A WALL, MEASURE THE DISTANCE FROM THE GROUND TO THE CENTER OF THE FOG LIGHT, AND THE DISTANCE FROM THE GROUND TO THE TOP OF THE LIGHT'S BEAM ON THE WALL. THERE SHOULD BE A 4" DROP FROM THE CENTER OF THE FOG LIGHT ON THE CAR, TO THE TOP OF THE BEAM ON THE WALL

