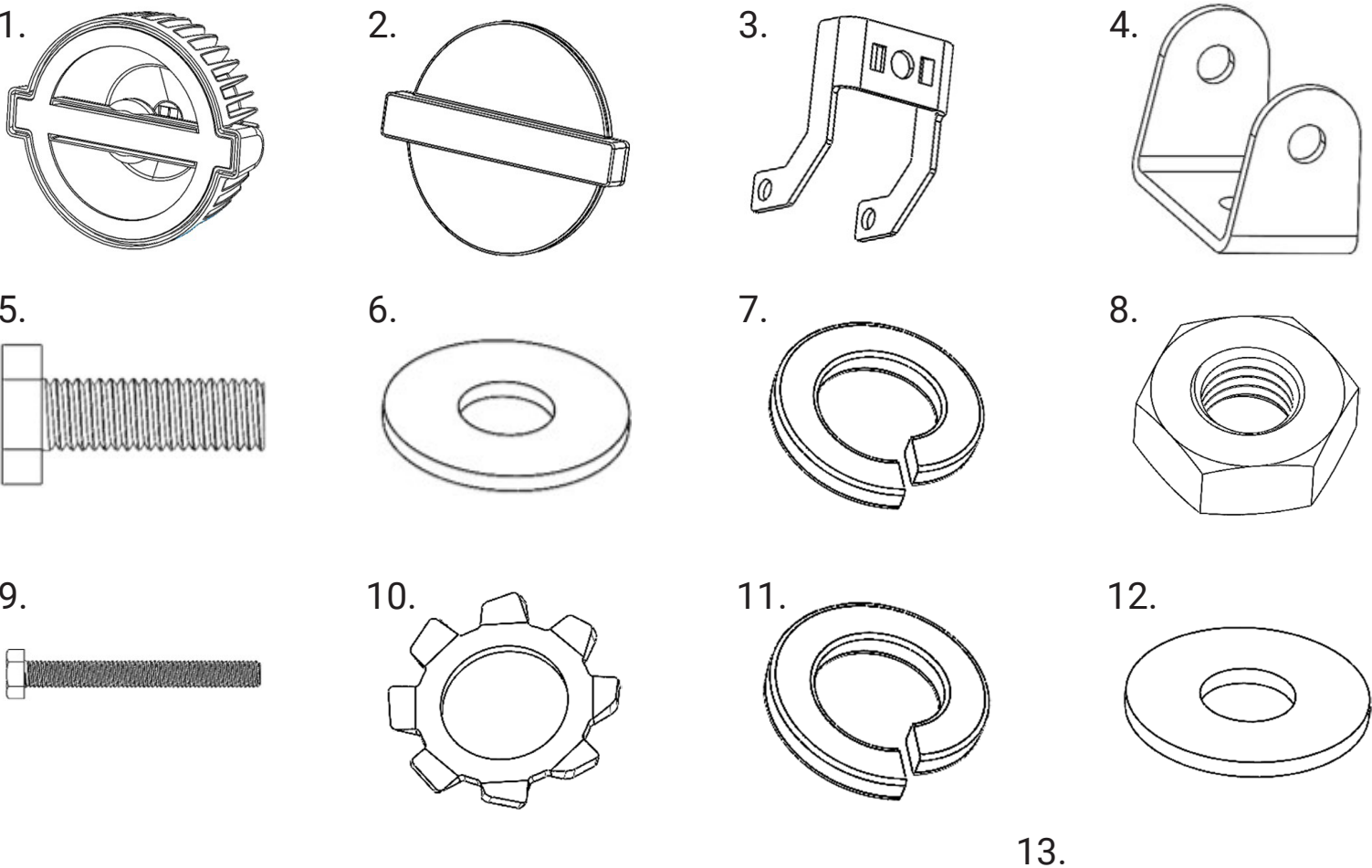
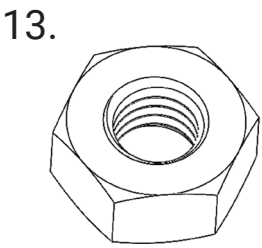


Components and Hardware:



Components and Hardware:

1. Lasso Light, 5in	(1)
2. Light Cover	(1)
3. Offset U-Bracket (pre-installed)	(1)
4. U-Bracket	(1)
5. M10 x 1.5 x 35 Hex Bolt	(1)
6. M10 Washer	(1)
7. M10 Split Lock Washer.....	(1)
8. M10 x 1.5 Hex Nut	(1)
9. M8 x 1.25 x 70 Hex Bolt (pre-installed)	(1)
10. M8 Toothed Lock Washer (pre-installed)	(2)
11. M8 Split Lock Washer (pre-installed)	(1)
12. M8 Washer (pre-installed)	(1)
13. M8 x 1.25 Hex Nut (pre-installed).....	(1)



Tools for Installation:

- Wrench Set

Lasso Light, 5in

Features:

- High Intensity LED chips
- White spot light beam
- Dual color halo ring & crossbar (Amber or White)
- Corrosion resistant aluminum construction
- Durable polycarbonate lens
- Optimized long-fin heat sink design
- Integrated 4-pin Deutsch DT connector

Specifications:

- Input Voltage: 9 - 30V
- Effective Lumens: 4000lm
- Power: 60W (Theory), 38W (Real)
- Connector: 4-pin Male Deutsch DT connector
- Ingress Protection: IP68

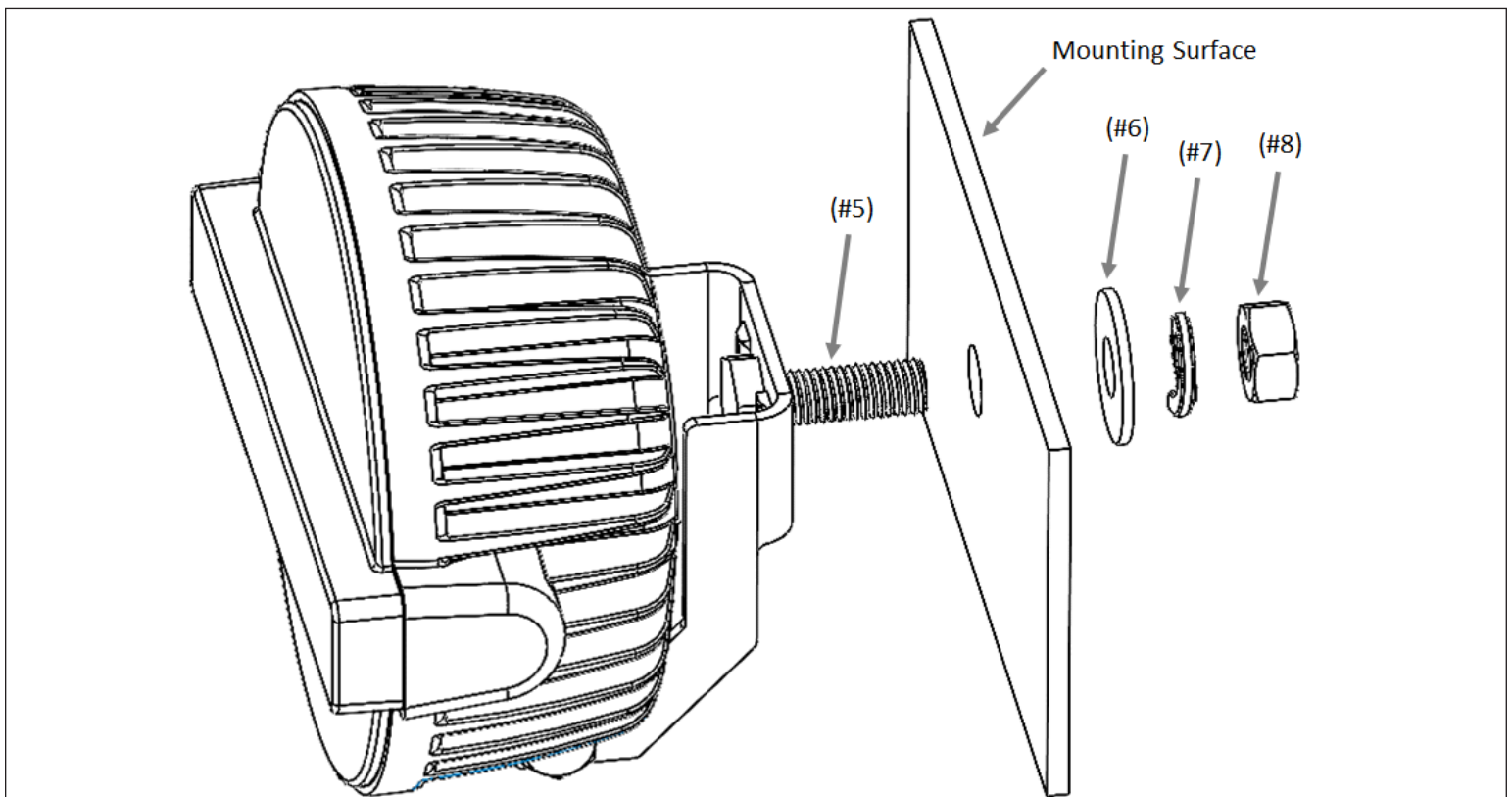
Mounting:

1. Determine which mounting bracket you will use for your application.

Offset U-Bracket (#3) comes pre-installed to the light. This bracket is useful when mounting to horizontal, vertical, and angled surfaces. This bracket can position the light further forward or downward on a mounting surface, if needed.

U-Bracket (#4) is useful for standard mounting on horizontal and vertical surfaces. If using the U-Bracket (#4), remove the pre-installed M8 Hex Bolt (#9), then replace Offset U-Bracket (#3) with U-Bracket (#4). Reattach all removed hardware, and tighten M8 Hex Bolt (#9) into M8 Hex Nut (#13).

2. Remove M10 Hex Nut (#8), M10 Split Lock Washer (#7), and M10 Washer (#6) from M10 Hex Bolt (#5). With M10 Hex Bolt (#5) installed to selected mounting bracket (#3 or #4), attach Lasso Light (#1) to light mounting surface with the removed M10 hardware.



Lasso Light, 5in

Wiring:

3. We suggest using Havoc Wiring Harness 2-Plug Kit (HFB-01-009) or Wire Harness 8-Plug Kit (HFB-01-006) to connect your lights. However, if building your own wiring harness, reference the image below for plug wiring.

DO NOT apply power Pins #1 and #3 at the same time. This may cause damage to the circuit board and is not covered under warranty.

