

Installation Instructions for IB20DBH0

by APS Auto Parts Specialist Inc.

Application: For 2010-2018 Toyota 4Runner Trail Edition/
2014-2018 Toyota 4Runner SR5

Estimated Time: 1 to 2 hours

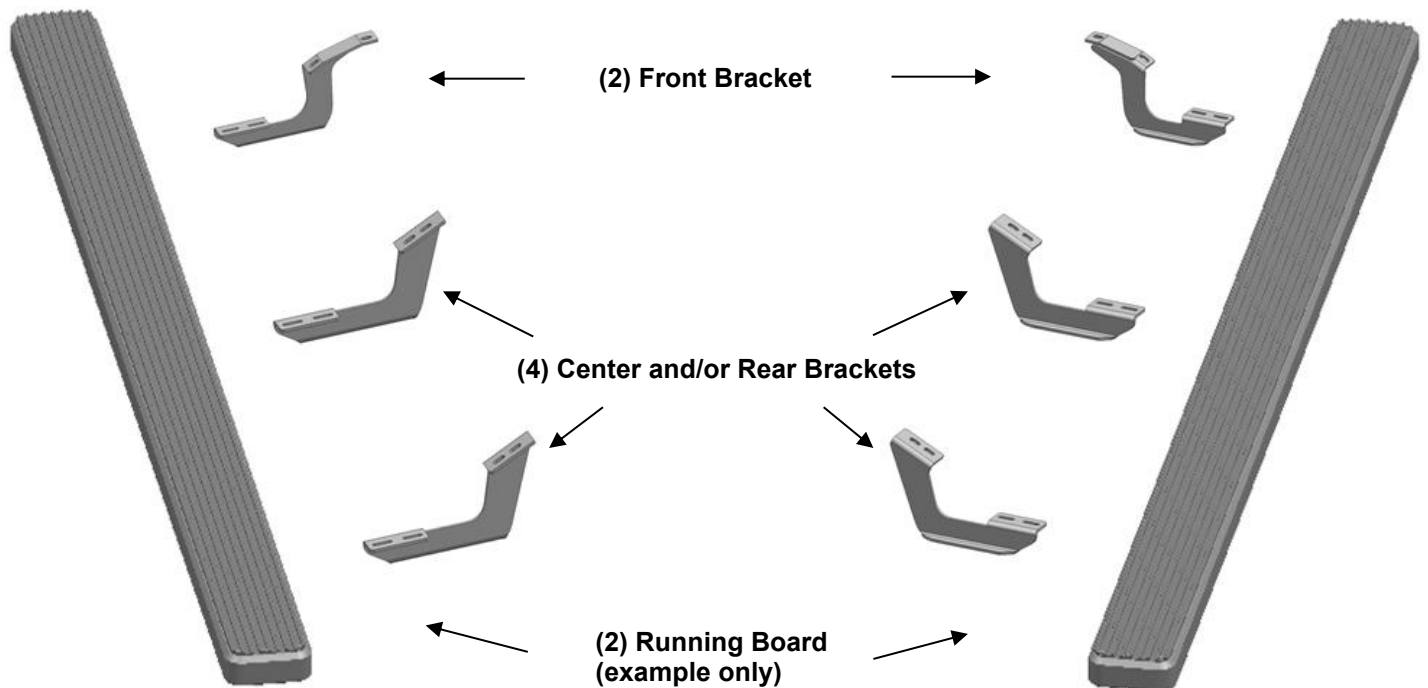


Disclaimer: Instructions intended for persons aged 18+ please do not attempt without adult supervision. Instructions are not intended to replace professional installation. Damage from improper installation, misuse or modification to the product voids the manufacturer's warranty.

PARTS LIST:

Item	QTY	Description	Item	QTY	Description
#01	2	Running Board(use for left or right)	#06	12	8mm Lock Washers
#02	2	Front Mounting Bracket (DF/PFM)	#07	12	M6 T- Bolts
#03	4	Center and/or Rear Brackets (DCM)	#08	12	M6 Flat Washers
#04	12	8mm x 30mm Hex Bolts	#09	12	M6 Nylon Lock Nuts
#05	12	8mm Flat Washers			

Front ↑



PROCEDURE:

1. REMOVE CONTENTS FROM BOX. VERIFY ALL PARTS ARE PRESENT. READ FACTORY BODY BOLT REMOVAL INSTRUCTIONS AND INSTALLATION INSTRUCTIONS CAREFULLY BEFORE STARTING INSTALLATION.
2. Starting on the passenger side of the vehicle, remove the existing (2) factory bolts, (or plugs), located by the front tire opening, **(Figure 1)**. Select (1) Front Mounting Bracket. Hold the Front Bracket up to the bottom of the body panel and against the pinch weld. Bolt the bracket to the factory threaded holes with the included (2) 8mm x 30mm Hex Bolts, (2) 8mm Lock Washers and (2) 8mm Flat Washers, **(Figure 2)**. Do not tighten hardware at this time.
3. The center and rear brackets are identical. Repeat the procedure as described in **Step 2** to install the Brackets in the center and rear mounting locations, **(Figures 3 & 4)**. **NOTE:** Install (1) mounting bracket at a time. Do not tighten hardware at this time.
4. Select a Running Board. Slip (6)6mm T-bolts into each bottom channel **(Figure 5)**. Carefully position the Running Board onto the (3) Mounting Brackets. **IMPORTANT:** Do not slide, (front to back), the Running Board on the Brackets or damage to the finish may result. Attach the

Running Board to each Mounting Brackets with (2) M6 T-bolts, (2)M6 flat washers and (2)M6 nylon lock nuts (**Figures 6**). Do not tighten at this time.

5. Level and adjust Running Board properly and tighten all hardware. **NOTE: Torque all M6 nylon lock nuts to 7 lb-ft.**
6. Repeat **Steps 2—5** for passenger/right Running Board installation.
7. Do periodic inspections to the installation to make sure that all hardware is secure and tight

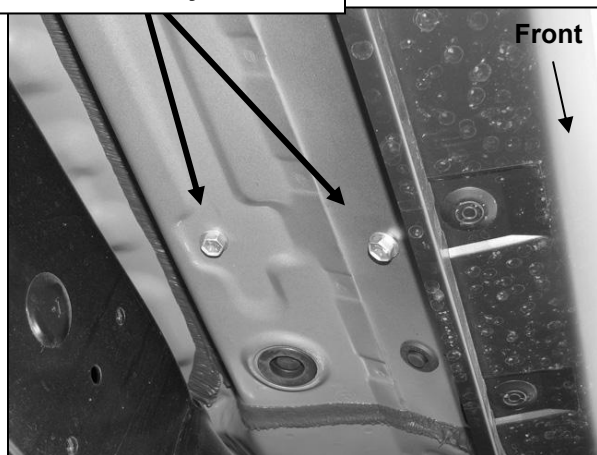
To protect your investment, wax this product after installing. Regular waxing is recommended to add a protective layer over the finish. Do not use any type of polish or wax that may contain abrasives that could damage the finish.

For Polished Finishes: Aluminum polish may be used to polish small scratches and scuffs on the finish. Mild soap may be used also to clean the Running Board.

For Black Finishes: Mild soap may be used to clean the Running Board.

Passenger Side Installation Pictured

Remove factory hex bolts



(Fig 1) Passenger side front mount pictured

(2) 8mm x 30mm Hex Bolts
(2) 8mm Flat Washers
(2) 8mm Lock Washers

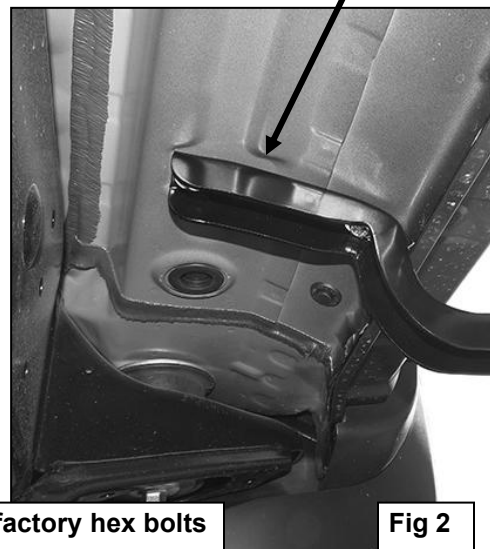


Fig 2

Plastic deflector



(Fig 3) Passenger side rear bracket location pictured

Remove factory hex bolts

(2) 8mm x 30mm Hex Bolts
(2) 8mm Flat Washers
(2) 8mm Lock Washers



(Fig 4) Passenger side center and rear brackets pictured

**Slip 6mm T-bolts into
the bottom channel**

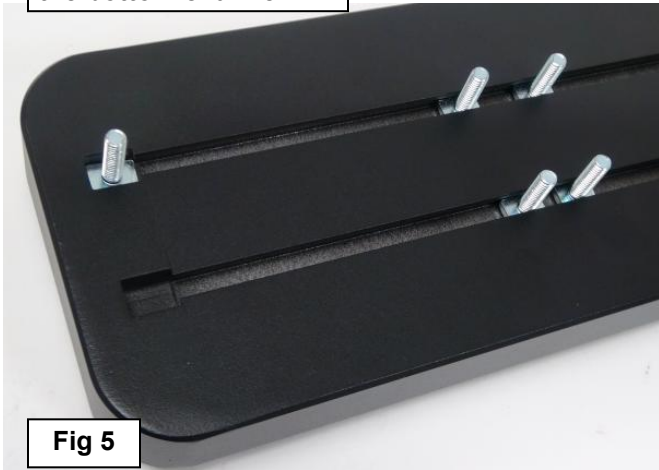


Fig 5

**(2)M6 T-bolts
(2)M6 Flat Washers
(2)M6 Nylon Lock Nuts**

(Fig 6) Bracket Installation

