

**PARTS LIST:**

Item	QTY	Description	Item	QTY	Description
#01	1	Driver Side bar	#07	12	M8 Flat Washer
#02	1	Passenger Side bar	#08	6	M8 Nylon Lock Nut
#03	3	Driver Side Mounting Bracket (DFM)	#09	12	M6 Square Hex Bolt
#04	3	Passenger Side Mounting Bracket (PFM)	#10	12	M6 Flat Washer
#05	6	M8 Hex Bolt	#11	12	M6 Nylon Lock Nut
#06	6	M8 Lock Washer			



**DFM/DCM/DRM**

**PFM/PCM/PRM**

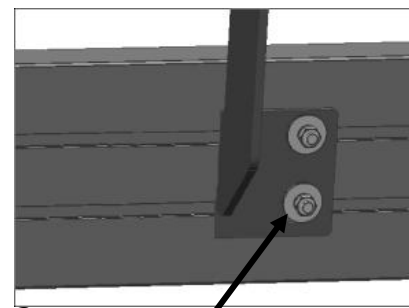
**INSTALLATION INSTRUCTION:**

**REMOVE CONTENTS FROM BOX. VERIFY ALL PARTS ARE PRESENT. READ INSTRUCTIONS CAREFULLY BEFORE STARTING INSTALLATION.**

1. From driver side of the vehicle starting at the front of the inner rocker panel.
2. Located on the inside as well as the bottom inner of the rocker panel you will see one thread hole and one thread stud for each mounting bracket refer to Figure 1.(Note all bracket are labeled)
3. Install mounting brackets to inner rocker panel using M6 Square Hex Bolt, M6 lock nuts & washers, as shown in Figure 2, finger tighten.
4. Attach side bar to brackets using M8 hex bolts & washers. Align the side bar with the vehicle body, then tighten & torque all fasteners. Repeat steps for passenger side to complete installation.



**Figure 1**



**Figure 2**

**(2)M6 Square Hex Bolt  
(2)M6 Flat Washers  
(2)M6 Lock Nuts**

Finish Protection Our product have a high finish that must be maintained such as any other high finish product on the vehicle. Protect the finish with a non-abrasive automotive wax. The use of soap, Polish, or wax that contains abrasives is detrimental, As the compounds scratch the finish and open it to corrosion.

**DISCLAIMER-** Buyer assumes all risk and liability whatsoever from the installation and use of our products. Our products are sold as decorative accessories and should not be relied upon as protection for vehicle or occupants in the event of a collision or roll over. The Manufacturer assumes no liability for injury, loss incidental or consequential damages in the event of a collision or rollover.