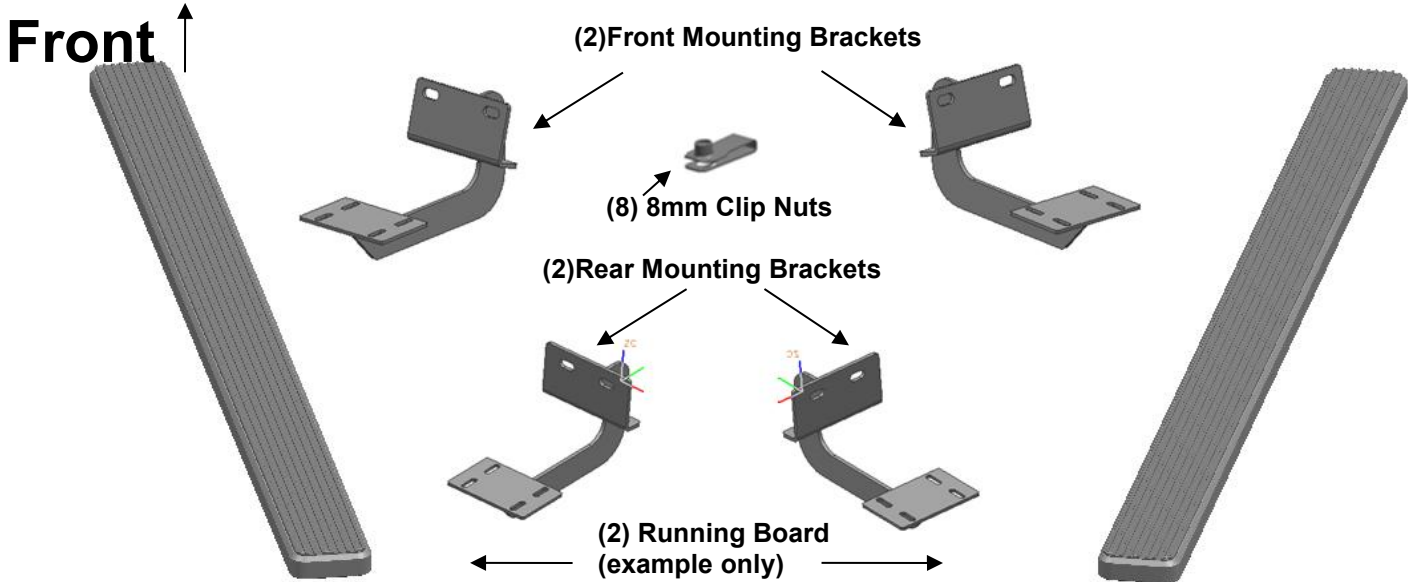


**PARTS LIST:**

Item	QTY	Description	Item	QTY	Description
#1	2	Running Board(use for left or right)	#7	16	8mm Lock Washers
#2	2	Front Mounting Brackets(left or right)	#8	8	8mm Hex Nuts
#3	2	Rear Mounting Brackets (left or right)	#9	16	6-1.0mm x 20mm T-Bolts
#4	8	8mm Clip Nuts	#10	16	6mm x 22mm OD x 2mm Flat Washers
#5	16	8mm x 30mm Hex Bolts	#11	16	6mm Lock Nuts
#6	24	8mm ID x 24mmOD x2mm Flat Washers			



**PROCEDURE:**

1. REMOVE CONTENTS FROM BOX. VERIFY ALL PARTS ARE PRESENT. READ INSTRUCTIONS CAREFULLY BEFORE STARTING INSTALLATION. ASSISTANCE IS RECOMMENDED.
2. Begin the installation by working on the driver side of the vehicle, Starting toward the front of the driver side.
3. Remove the plugs as shown(Figure 1),select(2) 8mm clip nuts and insert into the round hole. **NOTE:** Threaded nut must go towards the inside of the side panel,
4. Select a front bracket and bolt to the vehicle with (4)8mm Hex bolts,(6)8mm Washers,(4)8mm Lock Washers and (2)8mm Hex Nuts(Figure 2), Do not tighten hardware at this time.
5. Move along the vehicle to the rear driver side, select a rear bracket, repeat Steps 3-4 to install the rear brackets, Do not tighten hardware at this time.  
**NOTE:**Front brackets and rear brackets for the vehicle are different(Figure 3).
6. Select a Running Board. Slip(8) 6mm T-bolts into each bottom channel(Figure 4). Carefully position the Running Board onto the (2) Mounting Brackets. **IMPORTANT:** Do not slide, (front to back), the Running Board on the Brackets or damage to the finish may result. Attach the Running Board to the Mounting Brackets with(4) 6mm T-bolts,(4)6mm flat washers and (4)6mm lock nuts (Figures 5). Do not tighten at this time.
7. Level and adjust Running Board properly and tighten all hardware.
8. Repeat Steps 2—7 for passenger/right Running Board installation.
9. Do periodic inspections to the installation to make sure that all hardware is secure and tight.

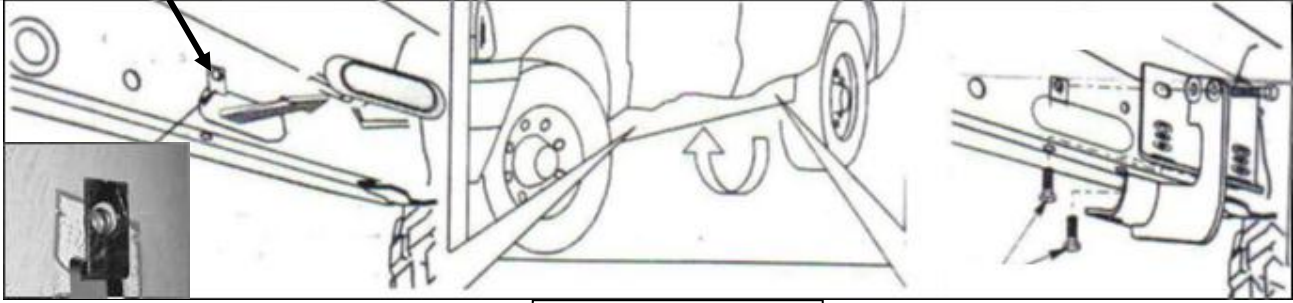
**To protect your investment,** wax this product after installing. Regular waxing is recommended to add a protective layer over the finish. Do not use any type of polish or wax that may contain abrasives that could damage the finish.

**For Polished Finishes:** Aluminum polish may be used to polish small scratches and scuffs on the finish. Mild soap may be used also to clean the Running Board.

**For Black Finishes:** Mild soap may be used to clean the Running Board.

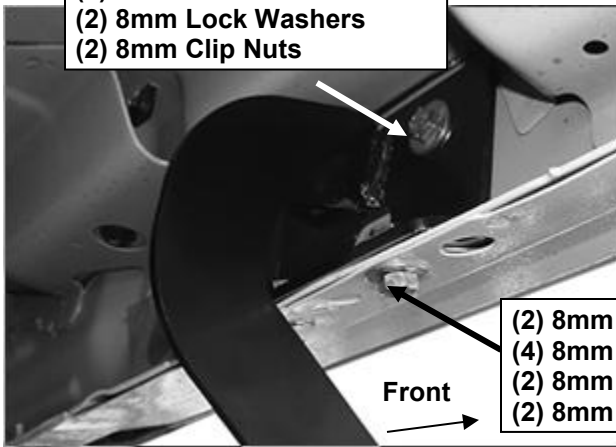
(2) 8mm Clip Nuts

**Driver Side Installation Pictured**



(Fig 1) Example only

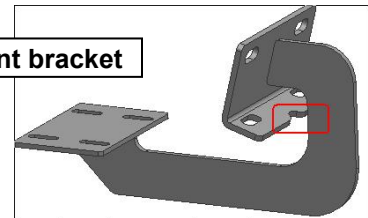
(2) 8mm x 30mm Hex Bolts  
(2) 8mm Flat Washers  
(2) 8mm Lock Washers  
(2) 8mm Clip Nuts



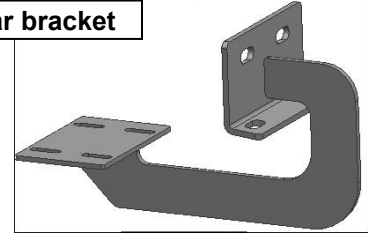
(2) 8mm x 30mm Hex Bolts  
(4) 8mm Flat Washers  
(2) 8mm Lock Washers  
(2) 8mm Hex Nuts

(Fig 2) Driver Front bracket installation picture

Front bracket



Rear bracket

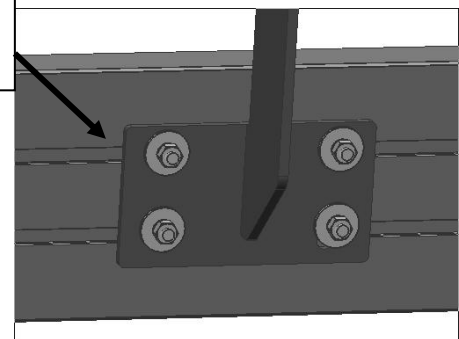


(Fig 3)



(Fig 4) Slip 6mm T-bolts into the bottom channel

(4) 6mm T-bolts  
(4) 6mm Flat Washers  
(4) 6mm Lock nuts



(Fig 5) Running Board Installation