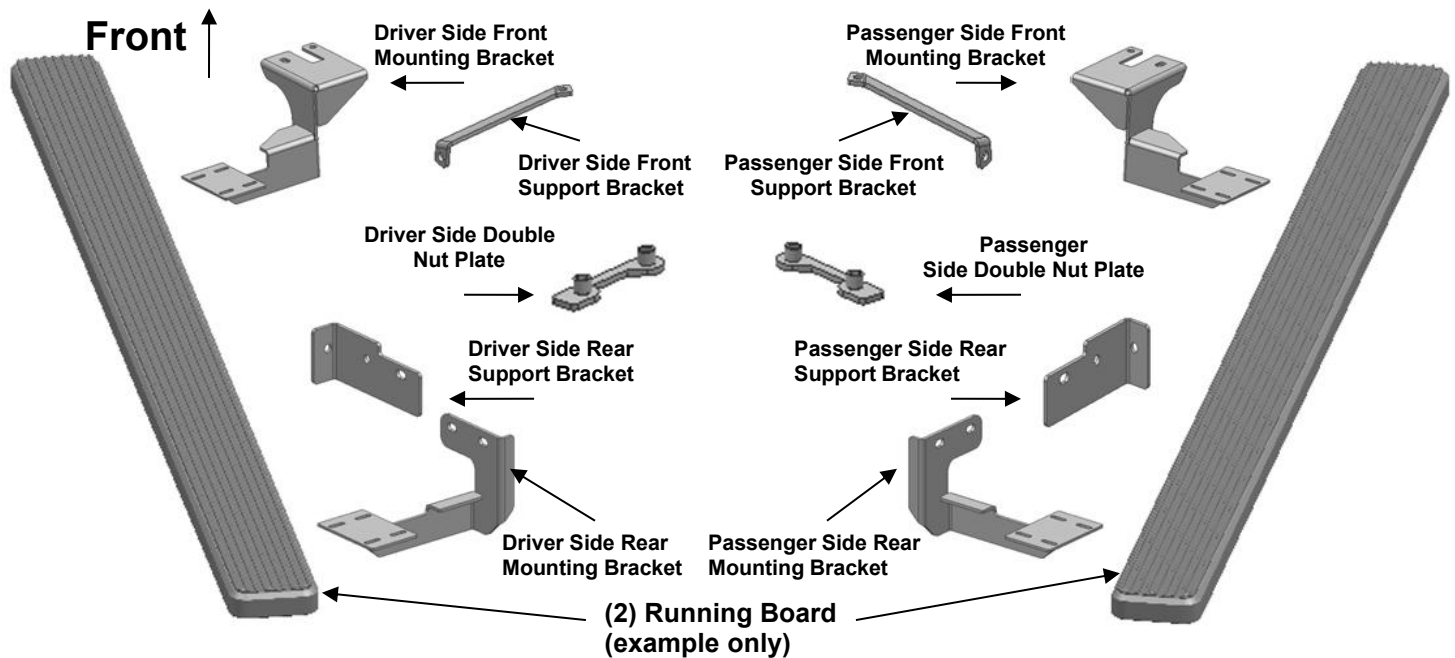


## PARTS LIST:

Item	QTY	Description	Item	QTY	Description
#1	2	Running Board(use for left or right)	#12	12	10-1.50mm x 30mm Hex Head Bolts
#2	1	Driver/Left Front Mounting Bracket	#13	20	10mm Flat Washers
#3	1	Passenger/Right Front Mounting Bracket	#14	12	10mm Lock Washers
#4	1	Driver/Left Rear Mounting Bracket	#15	8	10mm Hex Nuts
#5	1	Passenger/Right Rear Mounting Bracket	#16	2	12-1.75mm x 45mm Hex Head Bolts
#6	1	Driver/Left Front Support Bracket	#17	4	12mm Flat Washers
#7	1	Passenger/Right Front Support Bracket	#18	2	12mm Lock Washers
#8	1	Driver/Left Rear Support Bracket	#19	2	12mm Hex Nuts
#9	1	Passenger/Right Rear Support Bracket	#20	16	6-1.0mm x 20mm T-Bolts
#10	1	Driver/Left Double Nut Plate	#21	16	6mm Flat Washers
#11	1	Passenger/Right Double Nut Plate	#22	16	6mm Nylon Lock Nuts



## PROCEDURE:

- REMOVE CONTENTS FROM BOX. VERIFY ALL PARTS ARE PRESENT. READ INSTRUCTIONS CAREFULLY BEFORE STARTING INSTALLATION.**
- From underside of vehicle, locate the three factory holes (one large, two small) in the driver side cross frame by the front body mount. With the welded nuts facing up, insert the smaller end of the driver side Double Nut Plate through large hole in the frame and orient it to front smaller hole (**Figure 1**).
- Partially hang driver side front Mounting Bracket from already inserted Double Nut Plate using the included (2) 10mm x 30mm Hex Head Bolts, (2) 10mm Lock Washers, and (2) 10mm Flat Washers (**Figure 2**).
- On the rear side of the driver front body mount there is a factory hole in the floor panel located by the frame rail, loosely attach the straight end of the driver side front Support Bracket to this factory hole using the included (1) 10mm x 30mm Hex Head Bolt, (1) 10mm Lock Washer, (1) 10mm Hex Nut, and (2) 10mm Flat Washers. And attach the angle end of the support bracket to the front bracket with (1) 12mm x 45mm Hex bolt, (1) 12mm lock washer, (2) 12mm flat washers and (1) 12mm Hex nut (**Figure 3**).
- With the 90° bend towards the rear of the vehicle and facing the side of the vehicle, insert the driver side rear Support Bracket through rectangular hole located in the bottom of the body (**Figure 4**). Line up the hole in the 90° bend with factory hole located between the cab and the bed of the vehicle and

secure it using the included (1) 10mm x 30mm Hex Head Bolt, (1) 10mm Lock Washer, (1) 10mm Hex Nut, and (2) 10mm Flat Washers. Tighten at this time (**Figure 5**). **NOTE:** Before tightening make sure that the two holes on the longer side of the Support Bracket lines up with the two factory holes located in the side panel.

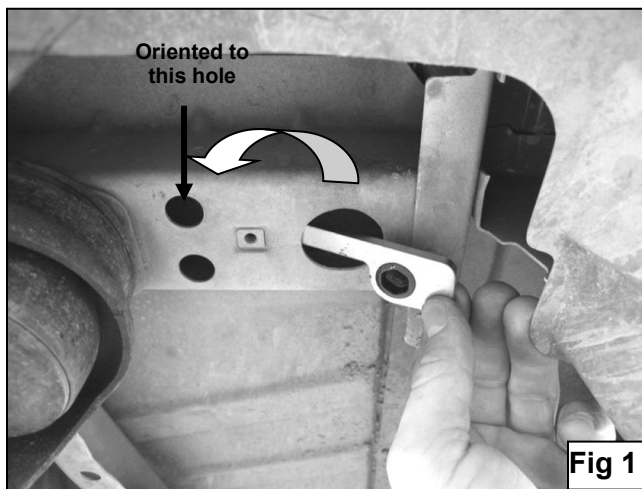
6. Loosely attach driver side rear Mounting Bracket to already inserted rear Support Bracket using the included (2) 10mm x 30mm Hex Head Bolts, (2) 10mm Lock Washers, (2) 10mm Hex Nuts, and (4) 10mm Flat Washers (**Figure 6**). **NOTE:** Make sure that the 90° bends on the rear Mounting Bracket are facing the inside of the vehicle when installed.
7. Select the Running Board. Slip (12) 6mm T-Bolts into each bottom channel (**Figure 7**). Carefully position the Running Board onto the (3) Mounting Brackets. **IMPORTANT:** Do not slide the Running Board on the Brackets or damage to the finish may result. Attach the Running Board to the Mounting Brackets with (4) 6mm T-bolts, (4) 6mm flat washers and (4) 6mm lock nuts (**Figure 8**). Do not tighten hardware.
8. Properly level and adjust the Running Board and tighten all hardware at this time.
9. Repeat **Steps 2—8** for the driver/left Running Board installation.
10. Do periodic inspections to the installation to make sure that all hardware is secure and tight.

**To protect your investment**, wax this product after installing. Regular waxing is recommended to add a protective layer over the finish. Do not use any type of polish or wax that may contain abrasives that could damage the finish.

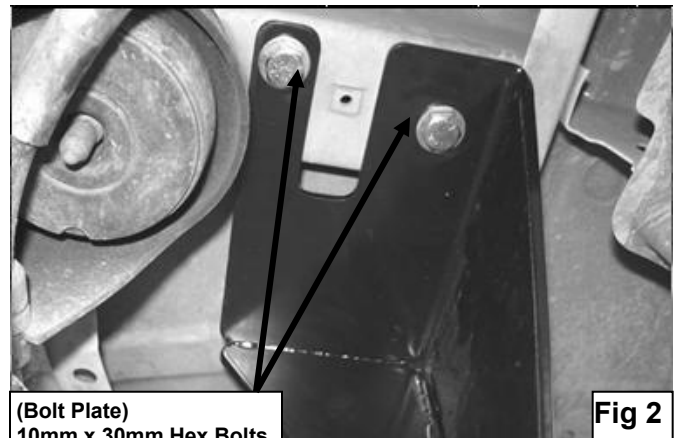
**For Polished Finishes:** Aluminum polish may be used to polish small scratches and scuffs on the finish. Mild soap may be used also to clean the Running Board.

**For Black Finishes:** Mild soap may be used to clean the Running Board.

**(Driver Sidebar Installation Shown)**

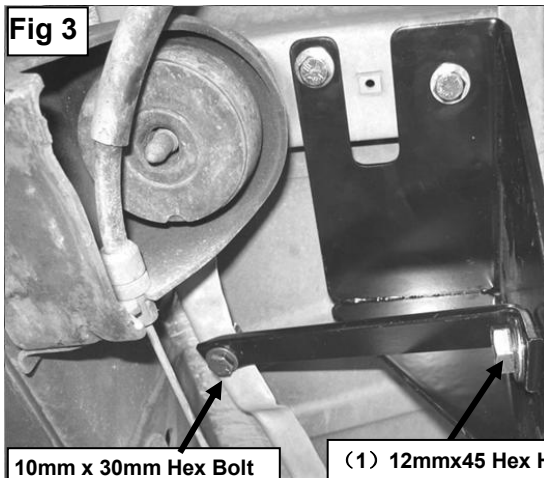


**Fig 1**



**Fig 2**

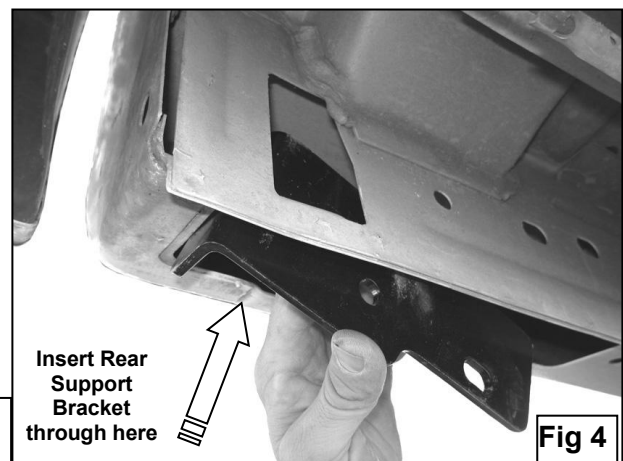
(Bolt Plate)  
10mm x 30mm Hex Bolts  
10mm Lock Washers  
10mm Flat Washers



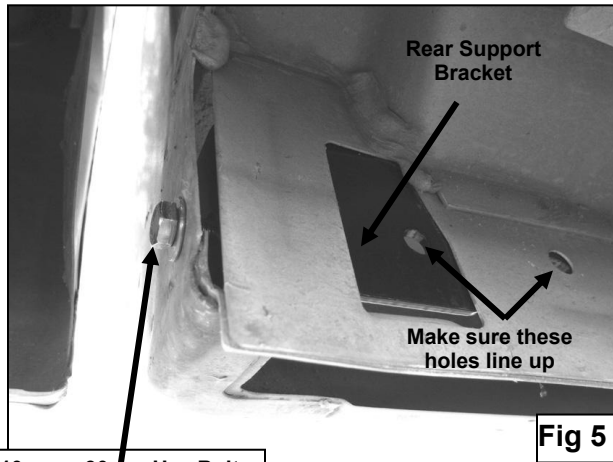
**Fig 3**

10mm x 30mm Hex Bolt  
10mm Lock Washer  
10mm Hex Nut  
10mm Flat Washers

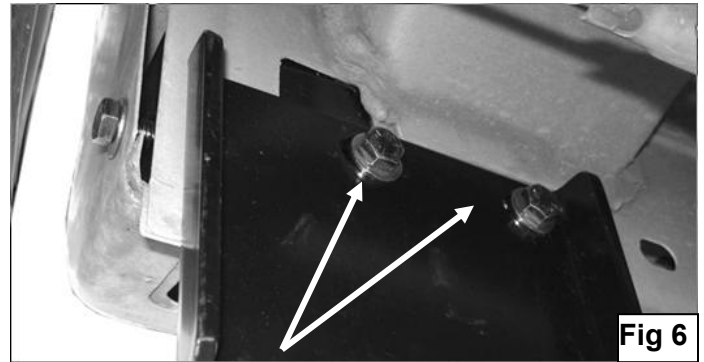
(1) 12mmx45 Hex Head Bolt  
(1) 12mm Lock Washer  
(2) 12mm Flat Washer  
(1) 12mm Hex nut



**Fig 4**



10mm x 30mm Hex Bolt  
10mm Lock Washer  
10mm Hex Nut  
10mm Flat Washers

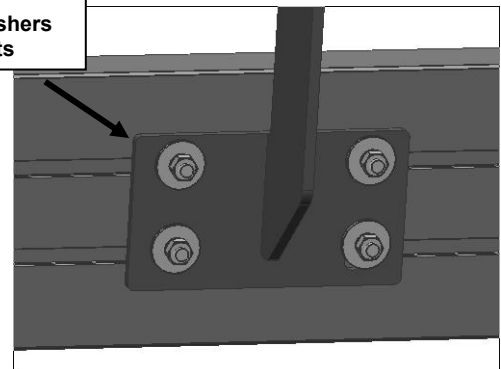


10mm x 30mm Hex Bolts  
10mm Lock Washer  
10mm Hex Nut  
10mm Flat Washers



(Fig 7) Slip 6mm T-bolts into the bottom channel.

(4)6mmT-bolts  
(4)6mm Flat Washers  
(4)6mmLock nuts



(Fig 8) Bracket Installation