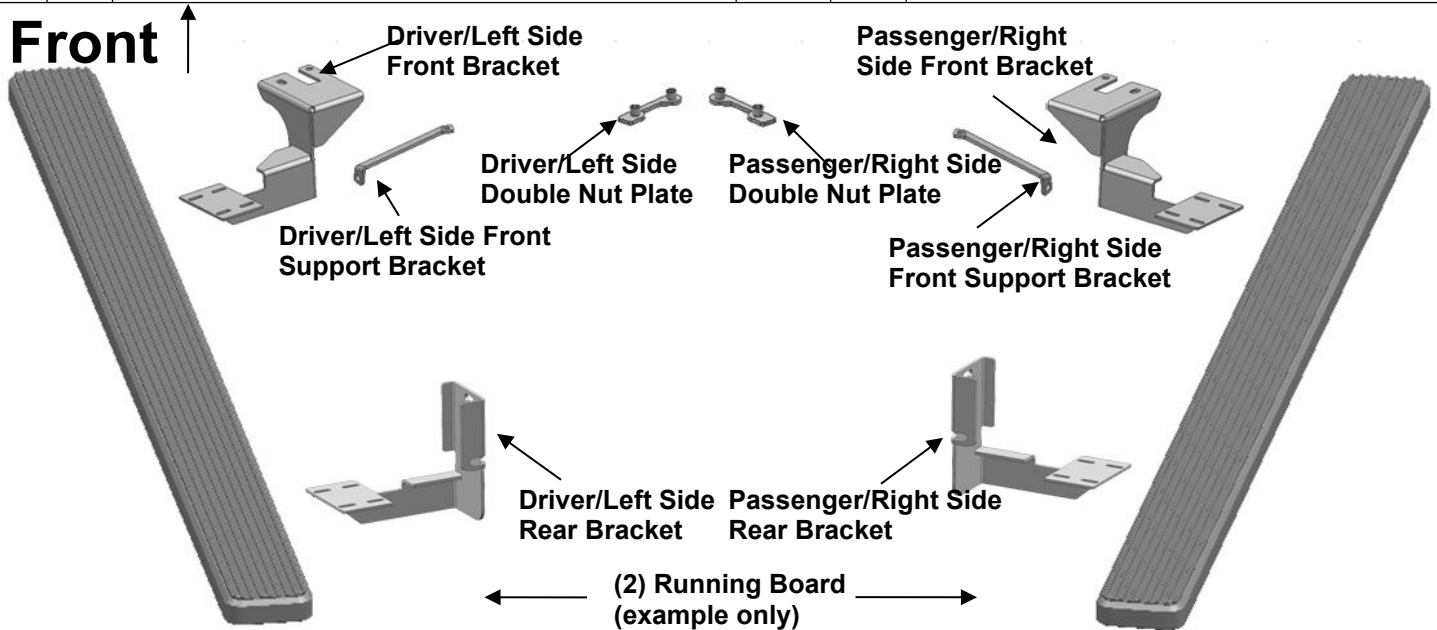


PARTS LIST:

Item	QTY	Description	Item	QTY	Description
#1	2	Running Board(use for left or right)	#11	10	10mm Lock Washers
#2	1	Driver/Left Side Front Mounting Bracket	#12	16	10mm Flat Washers
#3	1	Passenger/Right Side Front Mounting Bracket	#13	6	10mm Hex Nuts
#4	1	Driver/Left Side Front Support Bracket	#14	2	12mm x 40mm Hex Bolts
#5	1	Passenger/Right Side Front Support Bracket	#15	2	12 Lock Washers
#6	1	Driver/Left Side Rear Mounting Bracket	#16	4	12mm Flat Washers
#7	1	Passenger/Right Side Rear Mounting Bracket	#17	2	12mm Hex Nuts
#8	1	Driver/Left Side 10-1.50mm Double Nut Plate	#18	16	6-1.0mm x 20mm T-Bolts
#9	1	Passenger/Right Side 10-1.50mm Double Nut Plate	#19	16	6mm x 22mm OD x 2mm Flat Washers
#10	10	10-1.50mm x 30mm Hex Bolts	#20	16	6mm Lock Nuts



PROCEDURE:

1. **REMOVE CONTENTS FROM BOX. VERIFY ALL PARTS ARE PRESENT. READ INSTRUCTIONS CAREFULLY BEFORE STARTING INSTALLATION.**
2. From under the passenger side of the vehicle, locate the three factory holes (one large, two small) in the frame channel next to the front body mount. Insert the smaller end of the passenger side Double Nut Plate through the large hole in the frame and line it up with the smaller hole toward the front, **(Figure 1)**.
3. Hang the passenger side front Bracket from the Double Nut Plate with the included (2) 10mm x 30mm Hex Bolts, (2) 10mm Lock Washers and (2) 10mm Flat Washers, **(Figure 2)**.
4. Locate the factory hole on the edge of the floor panel behind the passenger front body mount. Select the passenger side Front Support Bracket. Bolt the flat end of the Support Bracket to the factory hole using the included (1) 10mm x 30mm Hex Bolt, (1) 10mm Lock Washer, (2) 10mm Flat Washers and (1) 10mm Hex Nut, **(Figure 3)**. Line up the bent end of the Support Bracket with the back of the front Bracket. Leave Support Bracket hardware loose at this time.
5. Next, move towards the rear of the vehicle. Insert the passenger side rear Bracket up and between the inner side panel and the outer body of the vehicle, **(Figure 4 & 5)**. Line up the hole in the 90° bend with the factory hole in the cab toward the bed and secure it using the included (1) 10mm x 30mm Hex Bolt, (1) 10mm Lock Washer, (2) 10mm Flat Washers and (1) 10mm Hex Nut. Attach the upper mounting location in the Rear Bracket to factory hole in the inner side panel using the included (1) 10mm x 30mm Hex Bolt, (1) 10mm Lock Washer, (2) 10mm Flat Washers and (1) 10mm Hex Nut, **(Figure 4 & 5)**. Do

IB(5",4")RUNNING BOARD

98-12 FORD RANGER/RANGER"EDGE" SUPER CAB 2DR

not tighten hardware at this time. **NOTE:** On some models, it may be necessary to drill a hole through the side panel for the hex bolts. **IMPORTANT:** Any cutting or drilling tool may break or shatter. Government regulations require safety glasses & equipment at all times when cutting or drilling.

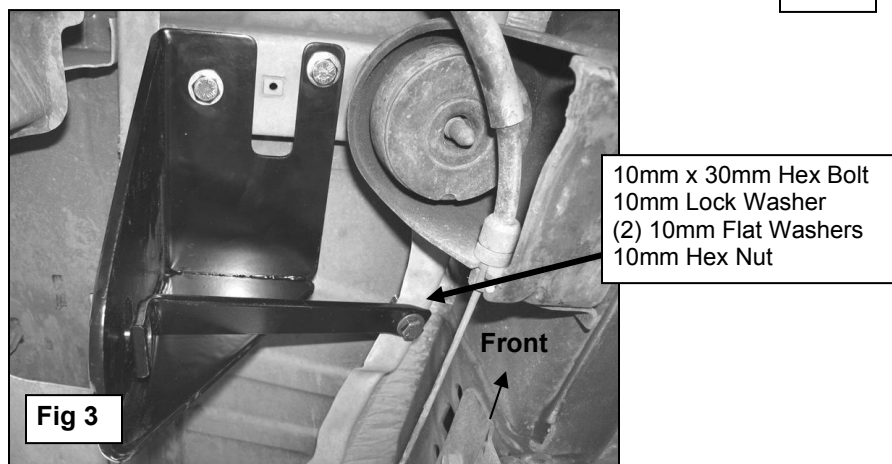
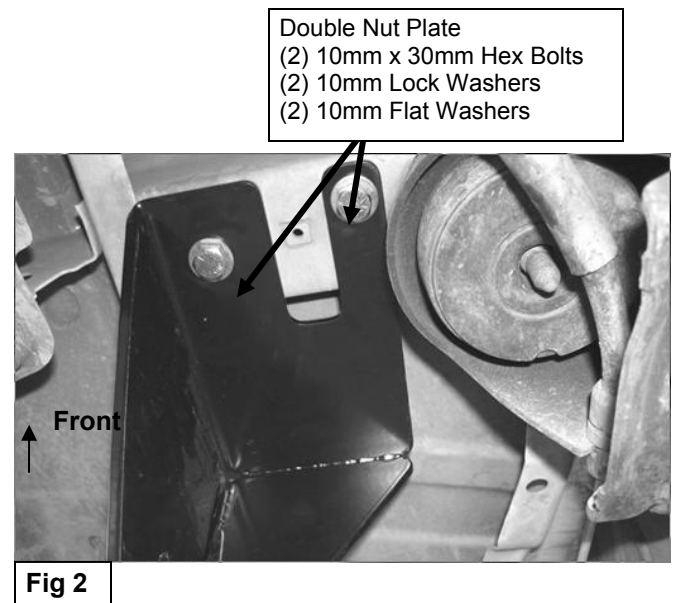
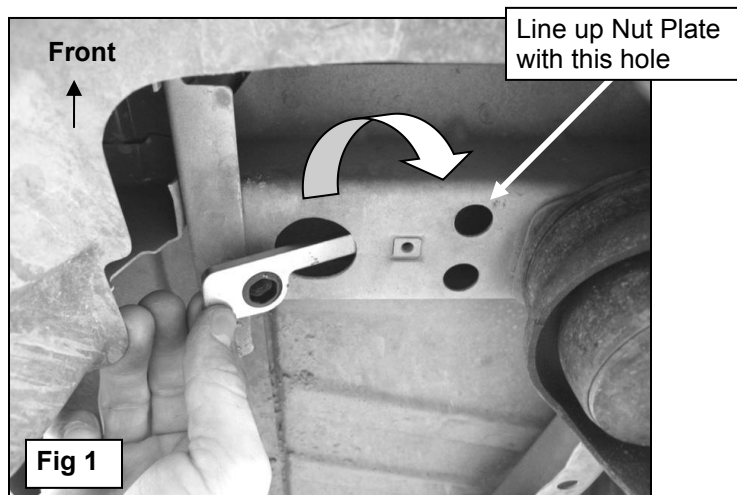
6. Select a Running Board. Slip(8) 6mm T-bolts into each bottom channel(**Figure 6**). Carefully position the Running Board onto the (2) Mounting Brackets. **IMPORTANT:** Do not slide, (front to back), the Running Board on the Brackets or damage to the finish may result. Attach the Running Board to the Mounting Brackets with(4) 6mm T-bolts,(4)6mm flat washers and (4)6mm lock nuts (**Figures 7**). Do not tighten at this time.
7. Level and adjust the running board and tighten all hardware.
8. Repeat steps 2-7 for driver running board installation.
9. Do periodic inspections to the installation to make sure that all hardware is secure and tight.

To protect your investment, wax this product after installing. Regular waxing is recommended to add a protective layer over the finish. Do not use any type of polish or wax that may contain abrasives that could damage the finish.

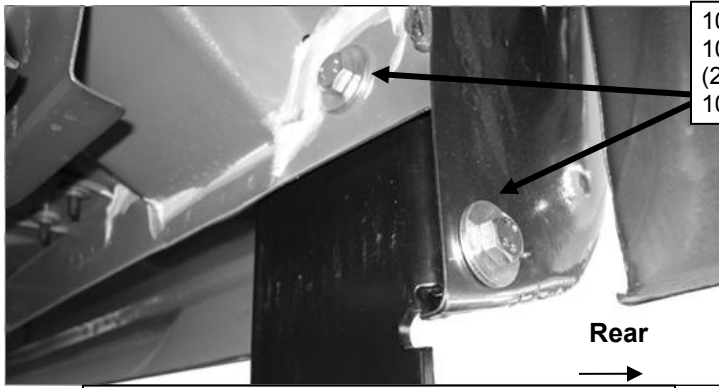
For Polished Finishes: Aluminum polish may be used to polish small scratches and scuffs on the finish. Mild soap may be used also to clean the Running Board.

For Black Finishes: Mild soap may be used to clean the Running Board.

Passenger Sidebar Installation Pictured



IB(5",4")RUNNING BOARD
 98-12 FORD RANGER/RANGER"EDGE" SUPER CAB 2DR



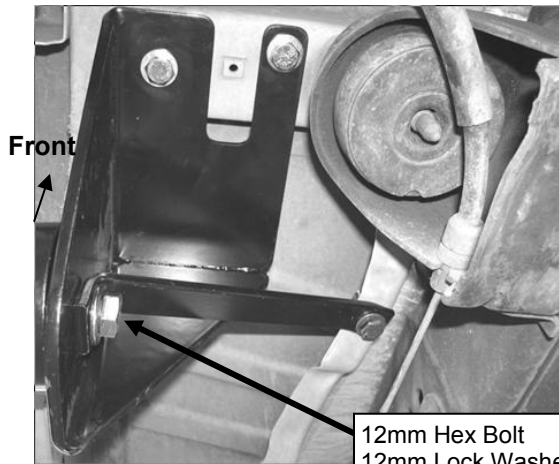
10mm x 30mm Hex Bolt
 10mm Lock Washer
 (2) 10mm Flat Washers
 10mm Hex Nut

10mm x 30mm Hex Bolt
 10mm Lock Washer
 (2) 10mm Flat Washers
 10mm Hex Nut



(Fig 5) Passenger Side Rear Bracket

(Fig 4) Passenger Side Rear Bracket Inside View



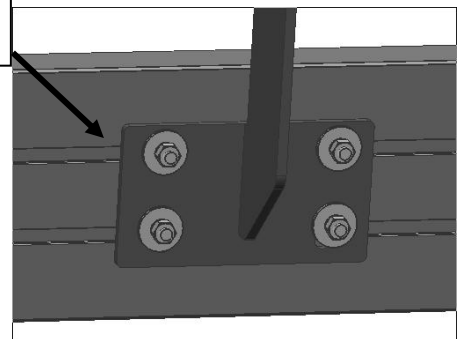
12mm Hex Bolt
 12mm Lock Washer
 12mm Flat Washer

Fig 6



(Fig 6) Slip 6mm T-bolts into the bottom channel

(4)6mm T-bolts
 (4)6mm Flat Washers
 (4)6mm Lock nuts



(Fig 7) Running Board Installation