

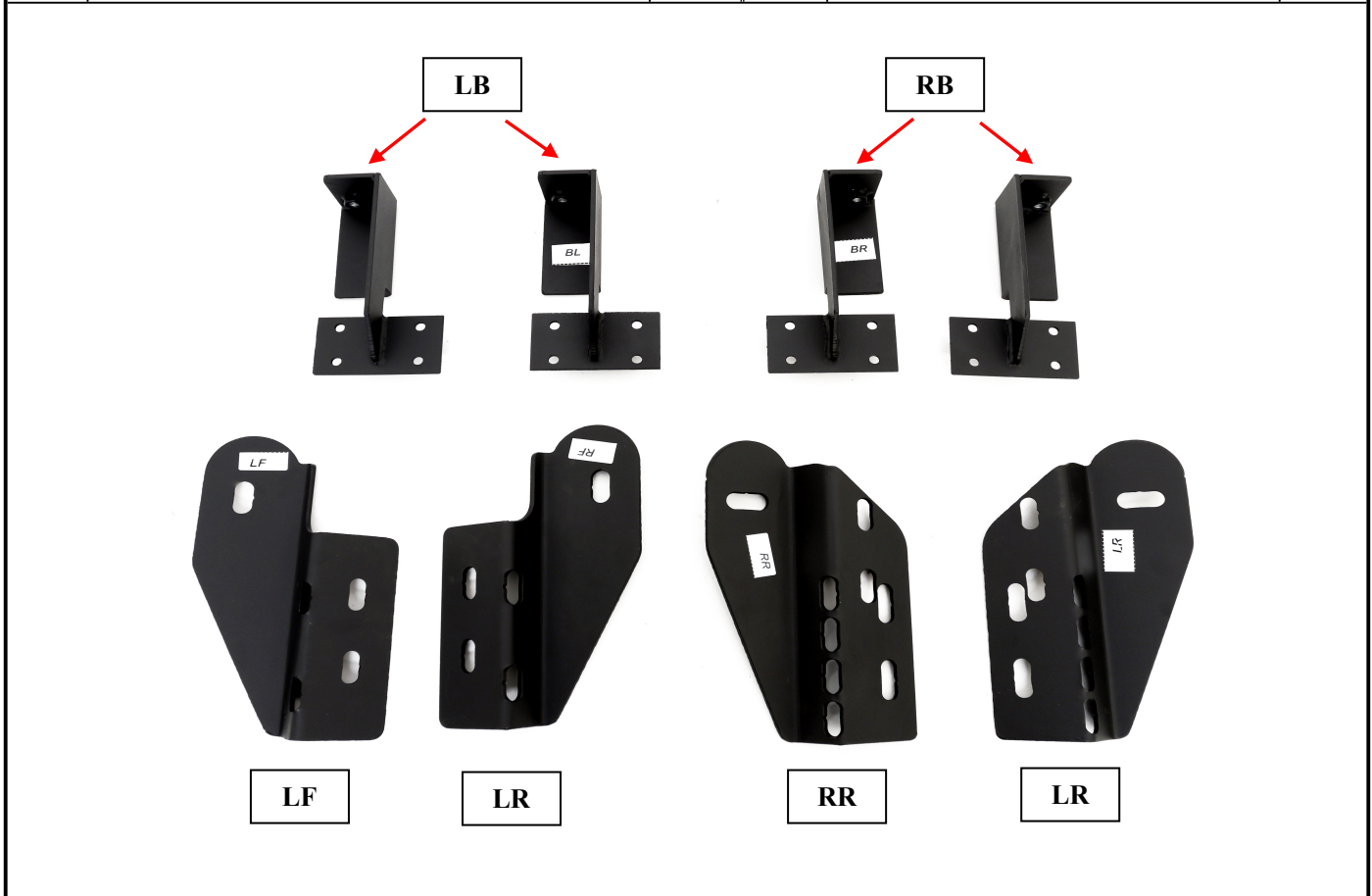
# Installation Instruction

**Part#: IB06DBA1A**

REV: 20141225

**Application: For 97-03, 04 HERITAGE FORD REGULAR CAB F150, F250 LIGHT DUTY**

Item	Part Name	QTY	Item	Part Name	QTY
1	Driver/Left Sidebar	1	13	M8x25mm Hex Bolt	8
2	Passenger/Right Sidebar	1	14	M8 Large Flat Washer	16
3	Driver Front Mounting Bracket (LF)	1	15	M8 Lock Washer	8
4	Driver Rear Mounting Bracket (LR)	1	16	M8 Hex Nut	8
5	Passenger Front Mounting Bracket (RF)	1	17	M10 Offset Double Bolt Plate (for front)	2
6	Passenger Rear Mounting Bracket (RR)	1	18	M10 Double Bolt Plate (for rear)	2
7	M12x50mm Hex Bolt	4	19	Driver Front Bracket & Passenger Rear Bracket (LB)	2
8	M12 Large Flat Washer	4	20	Driver Rear Bracket & Passenger Front Bracket (RB)	2
9	M12 Lock Washer	4	21	M6 Flat Washers	16
10	M10 Large Flat Washer	8	22	M6 Nylon Lock Nuts	16
11	M10 Lock Washer	8	23	M6 Square Hex Bolt	16
12	M10 Hex Nut	8			



<b>Step</b>	<b>Installation Instruction</b>
-------------	---------------------------------

The instruction here is for your reference only. We strongly recommend the professional installer for best result. We are not responsible for any damage caused by the installation. Thank you for choosing our product!

# Installation Instruction

Part#: IB06DBA1A

REV: 20141225

Application: For 97-03, 04 HERITAGE FORD REGULAR CAB F150, F250 LIGHT DUTY

1	REMOVE CONTENTS FROM BOX. VERIFY ALL PARTS ARE PRESENT. READ INSTRUCTIONS CAREFULLY BEFORE STARTING INSTALLATION.
2	Install the Bar Brackets on the Drive sidebar & Passenger sidebar, as shown <b>Figure 1A &amp; 1B</b> .
3	From under the driver side front of the vehicle, remove the oval grommet located on the inside of the rocker panel, ( <b>Figure 2</b> ). Insert (1) Offset Double Bolt Plate, (with threaded studs toward the top), into the factory oval hole, ( <b>Figure 3</b> ).
4	Locate the driver side front Mounting Bracket. Hold the Double Bolt Plate from one side while you position and attach the Mounting Bracket to the opposite side. Secure the Bolt Plate with one M10 Flat Washer, M10 Lock Washer and M10 Hex Nut. Proceed to install the rest of the hardware to secure the Mounting Bracket to the Double Bolt Plate. ( <b>Figure 4</b> ). Do not tighten hardware at this time.
5	Align the Mounting Bracket with holes in the pinch weld. Attach the Mounting Bracket to the pinch weld using the included (2) M8 x 25mm Hex Bolts, (4) M8 Flat Washers, (2) M8 Lock Washers and (2) M8 Hex Nuts. <b>NOTE:</b> Insert Bolt with Flat Washer from the outside-in. Do not tighten hardware at this time.
6	Moving to the rear, use one of the (centered) Double Bolt Plates and hardware to install the Rear Bracket. Repeat steps 2 – 4 for driver side rear Mounting Bracket. Depending on model year, slots in rear Mounting Brackets may align with only one factory hole along pinch weld, ( <b>Figure 5</b> ). If desired, installer may drill through Pinch Weld for second Pinch Weld bolt, (included). <b>IMPORTANT:</b> Do not drill for second hole until the Sidebar has been completely installed and adjusted to properly locate the Mounting Bracket on the vehicle. Do not tighten hardware at this time.
7	Once the Mounting Brackets have been partially installed, carefully unpack and separate the driver and passenger Sidebar. <b>NOTE:</b> Step pad typically goes toward front of vehicle to match footwell. Position Sidebar onto Mounting Brackets using the included (2) M12x50mm Hex Head Bolts, (2) M12 Lock Washers, and (2) M12 Flat Washers, ( <b>Figure 5</b> ). Do not tighten hardware.
8	Level and adjust the Sidebar, drill for second Pinch Weld Bolt if necessary, then tighten all hardware at this time
9	Repeat steps 3 – 8 for passenger Sidebar installation
10	Do periodic inspections of the installation to make sure all hardware is secure and tight
<p><b>To protect your investment, wax this product after installing. Regular waxing is recommended to add a protective layer over the finish. Do not use any type of polish or wax that may contain abrasives that could damage the finish.</b></p> <p><b>For stainless steel:</b> Aluminum polish may be used to polish small scratches and scuffs on the finish. Mild soap may be used also to clean the Sidebar.</p> <p><b>For gloss black finishes:</b> Mild soap may be used to clean the Sidebar.</p>	

The instruction here is for your reference only. We strongly recommend the professional installer for best result. We are not responsible for any damage caused by the installation. Thank you for choosing our product!

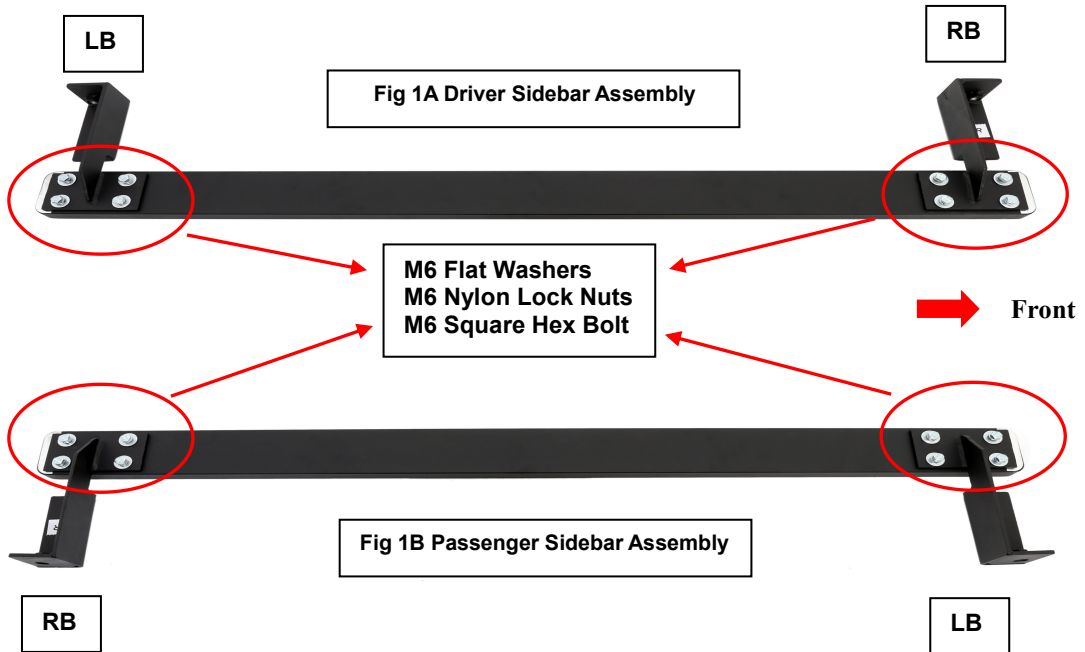
# Installation Instruction

Part#: IB06DBA1A

REV: 20141225

Application: For 97-03, 04 HERITAGE FORD REGULAR CAB F150, F250 LIGHT DUTY

## Sidebar & Bar Bracket Assembly Shown:



The instruction here is for your reference only. We strongly recommend the professional installer for best result. We are not responsible for any damage caused by the installation. Thank you for choosing our product!

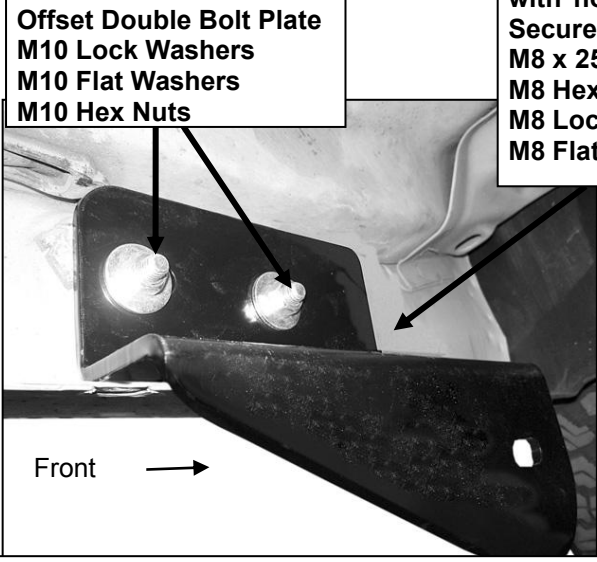
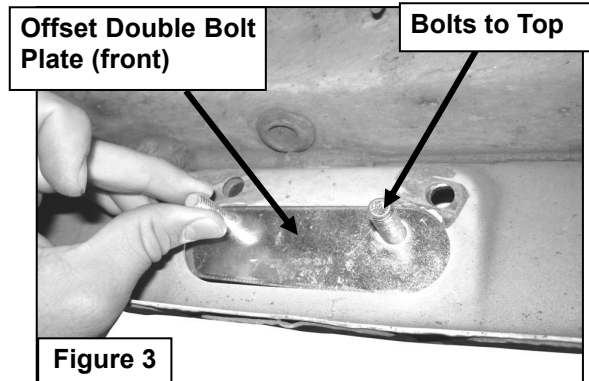
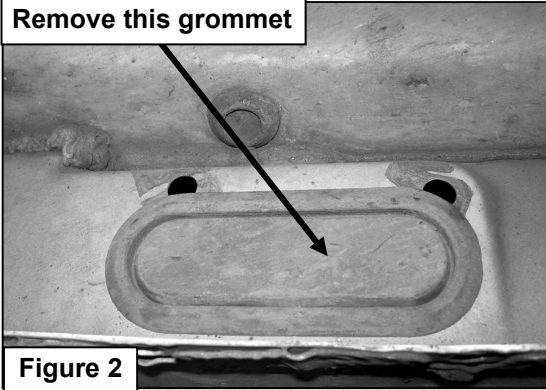
# Installation Instruction

Part#: IB06DBA1A

REV: 20141225

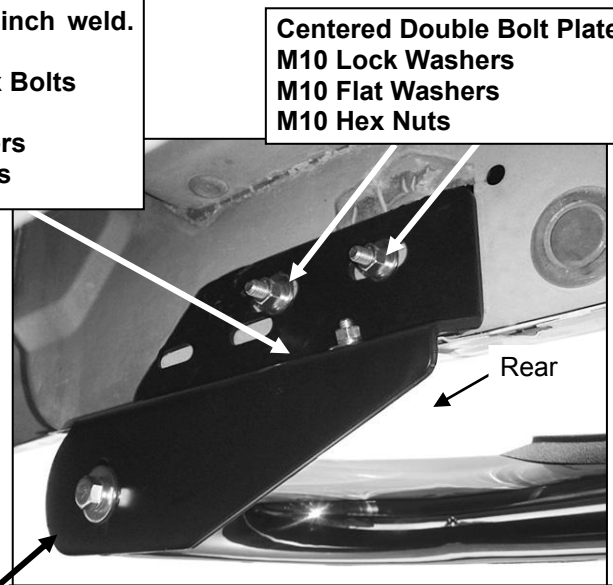
Application: For 97-03, 04 HERITAGE FORD REGULAR CAB F150, F250 LIGHT DUTY

## Driver Side Mounting Brackets Shown



(Figure 4) Front Mounting Bracket installation

Align holes in brackets with holes in pinch weld.  
Secure with:  
M8 x 25mm Hex Bolts  
M8 Hex Nuts  
M8 Lock Washers  
M8 Flat Washers



(Figure 5) Rear Mounting Bracket installation

M12x50mm Hex Bolt  
M12 Lock Washer  
M12 Flat Washer

The instruction here is for your reference only. We strongly recommend the professional installer for best result. We are not responsible for any damage caused by the installation. Thank you for choosing our product!