

Installation Instructions for IB06DAH8/IB06DAH9

by APS Auto Parts Specialist Inc.

Application: FOR 2015-2018 Ford F-150 Super/Regular Cab /
2017-2018 Ford F-250/F-350 Super/Regular Cab

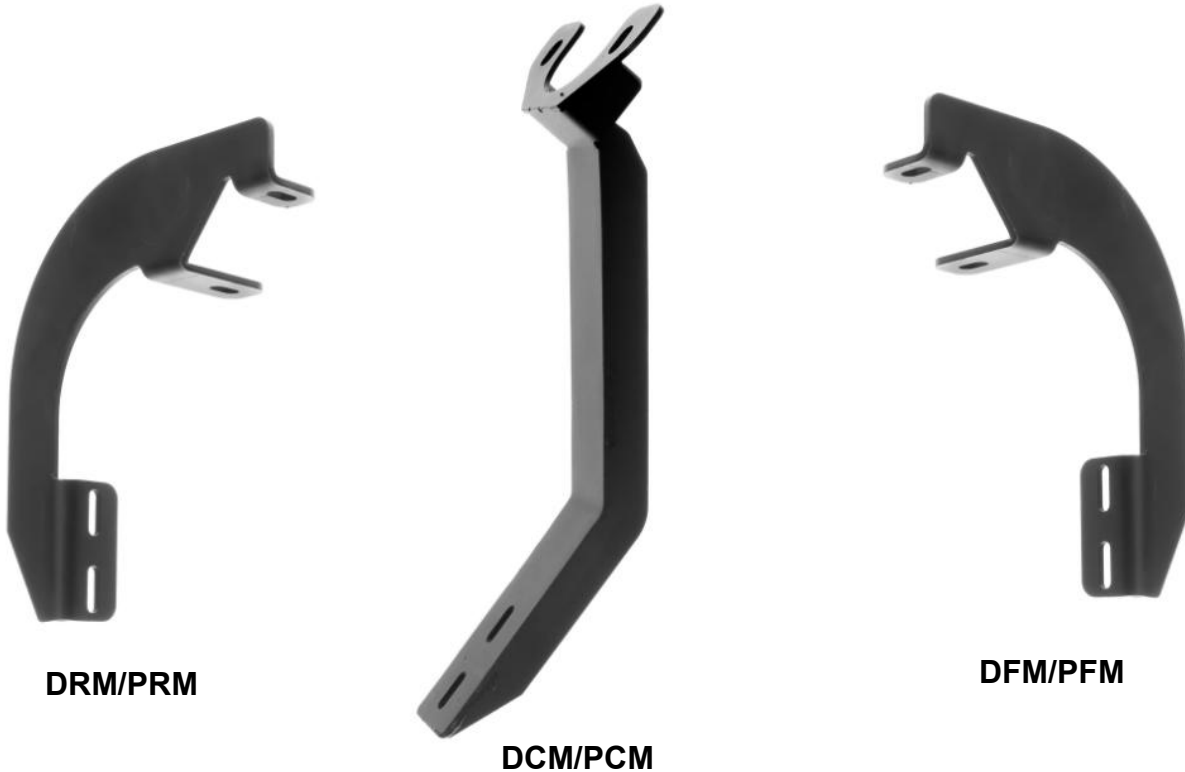
Estimated Time: 1 to 2 hours



Disclaimer: Instructions intended for persons aged 18+ please do not attempt without adult supervision. Instructions are not intended to replace professional installation. Damage from improper installation, misuse or modification to the product voids the manufacturer's warranty.

PARTS LIST:

Item	QTY	Description	Item	QTY	Description
#1	2	Running Board(use for left or right)	#6	8	8mm x 24mm OD x 2mm Washers
#2	2	Driver Front Mounting Brackets(DFM/PFM)	#7	12	6mm x 22mm OD x 2mm Flat Washers
#3	2	Driver Rear Mounting Brackets(DRM/PRM)	#8	12	M6 Nylon Lock Nuts
#4	2	Driver Center Mounting Brackets(DCM/PCM)	#9	8	M8 Nylon Lock Nuts
#5	8	8mm Plastic Washers	#10	12	M6-1.0mm x 20mm T-Bolts



PROCEDURE:

REMOVE CONTENTS FROM BOX. VERIFY ALL PARTS ARE PRESENT. READ INSTRUCTIONS CAREFULLY BEFORE STARTING INSTALLATION. ASSISTANCE IS RECOMMENDED.

1. Start the installation under the passenger side of the vehicle. Locate the front factory running board mounting location along the inner side of the body, **(Figure 1)**.
2. Slide (1) Plastic Washer over each factory mounting stud in the body panel, **(Figures 2 & 3)**.
IMPORTANT: The Plastic Washers are designed to prevent corrosion between the aluminum body panel and the steel mounting brackets. **Do not install the Brackets without the Plastic Washers.**
3. Select (1) Driver/Left Mounting Brackets. **NOTE:** All (2) Brackets are universal and will fit left or right side for front mounting location. Attach the Mounting Bracket to the (2) factory studs with (2) M8 Flat Washers and (2) M8 Nylon Lock Nuts, **(Figure 4)**. Snug but do not fully tighten the hardware.
4. Move toward the rear of the cab, Select (1) Passenger/Right Mounting Brackets, **NOTE:** All (2) Brackets are universal and will fit left or right side for rear mounting location. Repeat **Steps 1-3** to install the rear passenger side Brackets, **(Figure 5)**.
5. Move to the center body mount, **(Figure 6)**. Remove the (2) factory hex flange nuts on the bottom of the mount. Select (1) Center Mounting Bracket. **NOTE:** Center Brackets will fit passenger or driver side. Reuse the factory hex nuts to attach the Center Bracket to the underside of the body mount, **(Figures 6 & 7 & 8)**.
6. Once the (3) Brackets have been fully installed, select (1) Running Board. Place the Running Board on top of the Brackets. Locate the channels in the bottom of the Running Board. Select

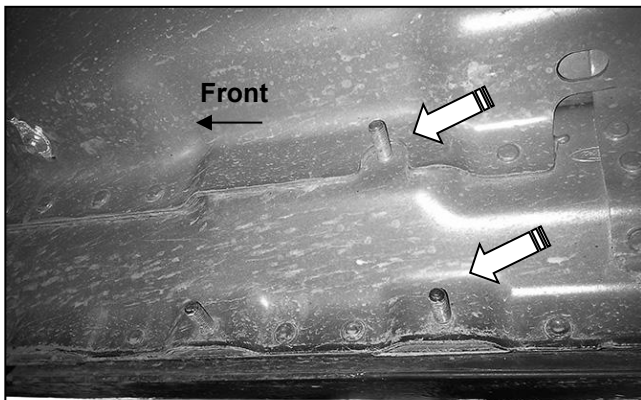
- (6) M6-1.0mm x 20mm T-Bolts, **(Figure 9)**. Insert the T-Bolts into the channels in the bottom of the Running Board closest to the Brackets, **(Figure 10)**. Lift the Board up and guide the studs through the Brackets.
- Attach the Running Board to the Brackets with (6) 6mm ID x 22mm OD x 2mm Flat Washers and (6) M6 Nylon Lock Nuts, **(Figure 11 &12)**. NOTE: The Running Board is designed to fit close to the vehicle. It may be necessary to loosen the Bracket hardware slightly and tilt the Brackets downward to insert the Running Board between the Brackets and the body.
 - Level and adjust the Running Board as necessary and fully tighten all hardware. **NOTE: Torque all M6 nylon lock nuts to 7 lb-ft.**
 - Repeat **Steps 1-8** for the driver side Running Board installation.
 - Do periodic inspections to the installation to make sure that all hardware is secure and tight.

To protect your investment, wax this product after installing. Regular waxing is recommended to add a protective layer over the finish. Do not use any type of polish or wax that may contain abrasives that could damage the finish.

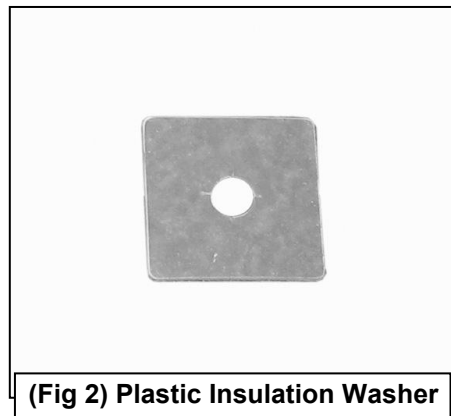
For Polished Finishes: Aluminum polish may be used to polish small scratches and scuffs on the finish. Mild soap may be used also to clean the Running Board.

For black finishes: Mild soap may be used to clean the Running Board.

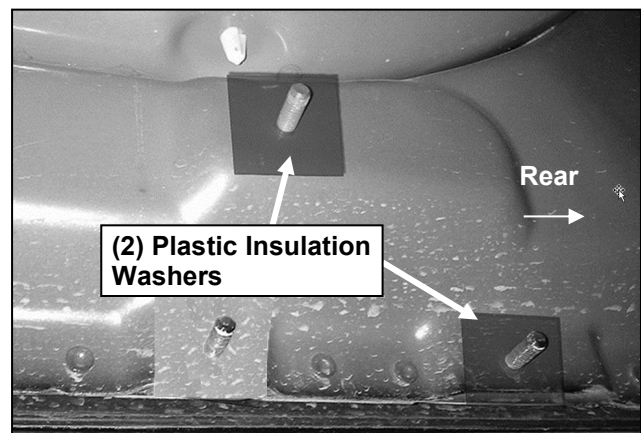
Passenger/right Side Installation Pictured



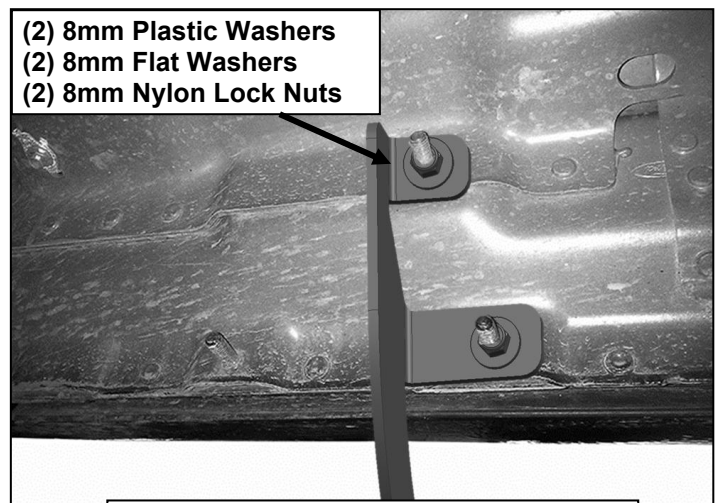
(Fig 1) Passenger side front mounting location



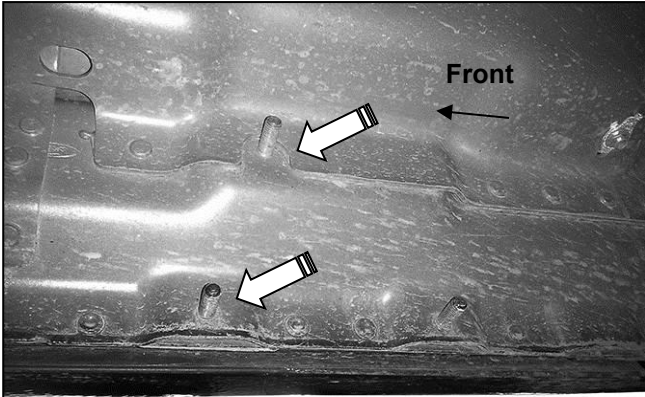
(Fig 2) Plastic Insulation Washer



(Fig 3) Thread Plastic Washers onto two mounting studs. Passenger side front mounting location pictured



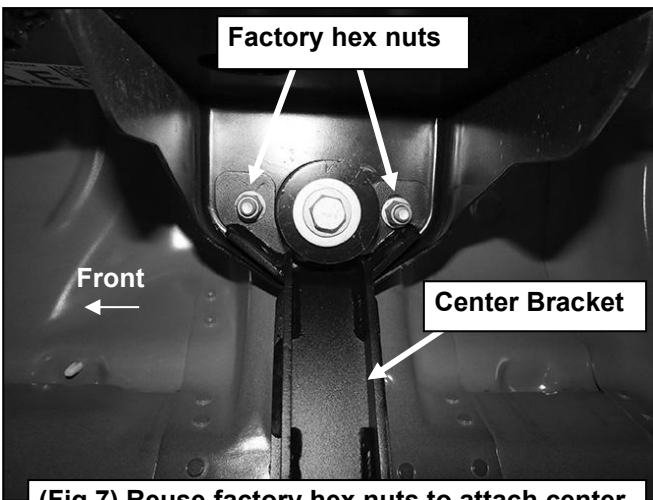
(Fig 4) Passenger/right front installation



(Fig 5) Passenger side rear mounting location



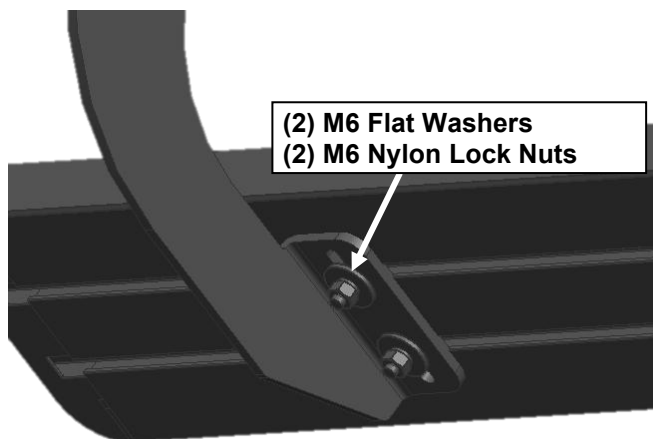
(Fig 6) Passenger/right center body mount



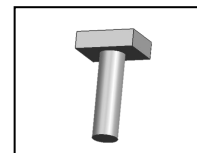
(Fig 7) Reuse factory hex nuts to attach center Bracket to underside of center body mount



(Fig 8) Passenger/right center Bracket installed



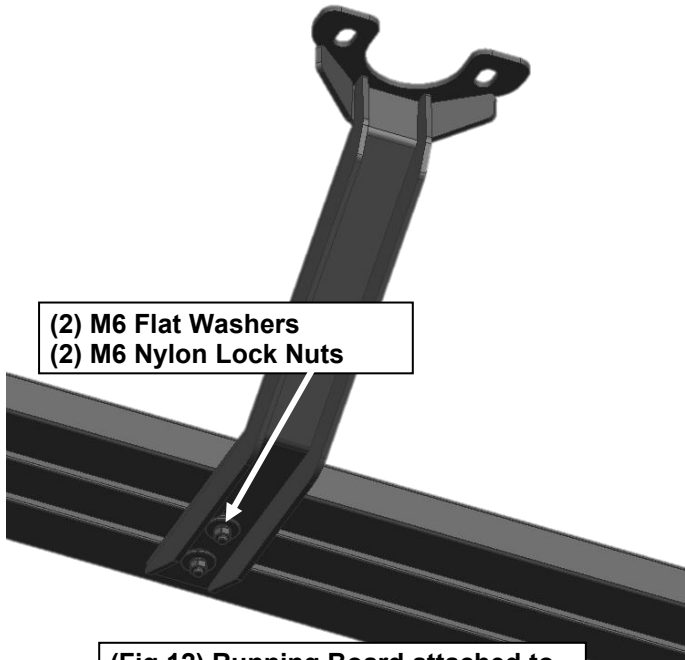
(Fig 11) Passenger side front and rear Bracket installed



(Fig 9) M6-1.0mm x 20mm T-Bolts



(Fig 10) Slip M6 T-bolts into the bottom channel



(2) M6 Flat Washers
(2) M6 Nylon Lock Nuts

(Fig 12) Running Board attached to passenger/right center Bracket



Complete Installation