

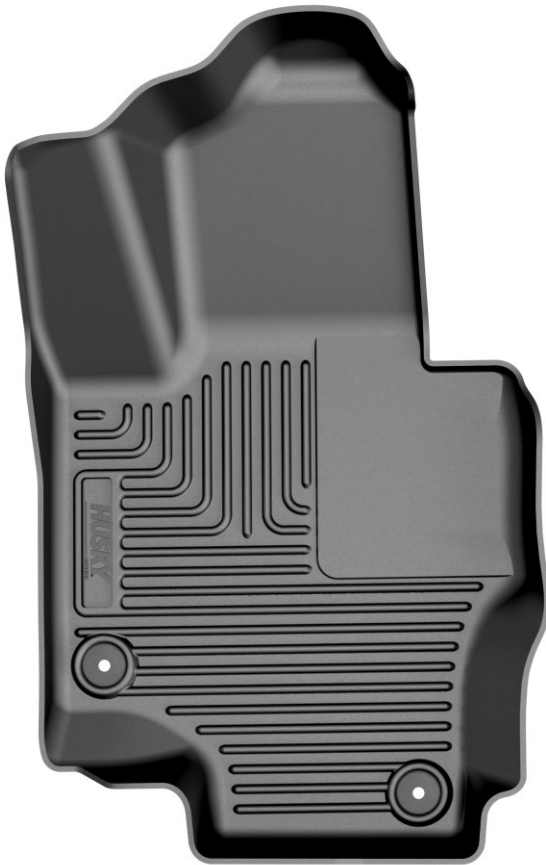


# WEATHERBEATER™ FLOOR LINERS

PT #96171

## USE AND INSTALLATION INSTRUCTIONS FOR YOUR FRONT FLOOR LINERS

Thank you for selecting a Weatherbeater® Floor Liner from Husky Liners. Your new front floor liners are custom molded to fit your specific vehicle. The liners are made to take the place of your factory floor mats. ***For correct fit, it is necessary to remove the factory floor mats before installing your new floor liners.*** However, do not remove the factory-installed carpeting. Your liners are made from an engineering resin that is lightweight and extremely tough and durable. The easiest way to clean your liners is with a damp cloth or sponge. If using a cleaner, 409® or Glass Plus® work well. Use of Armor All®, Son-of-a-Gun® or similar items is discouraged as these products make the liners slick.



LEFT OR DRIVER'S SIDE



RIGHT OR PASSENGER'S SIDE

TO EASE INSTALLATION OF YOUR FRONT LINERS, MOVE BOTH FRONT SEATS TO THEIR MOST REARWARD POSITION. NEXT, REMOVE ANY EXISTING FLOOR MATS AND INSTALL THE LINERS, POSITIONED AS SHOWN ABOVE. TAKE CARE THE LINERS ARE SECURED TO THE FACTORY FLOOR MAT RETENTION HOOKS LOCATED IN THE VEHICLE FLOOR. ONCE THE LINERS ARE INSTALLED, MOVE THE FRONT SEATS TO THEIR DESIRED LOCATIONS.



## WEATHERBEATER™ FLOOR LINERS

PT #96171

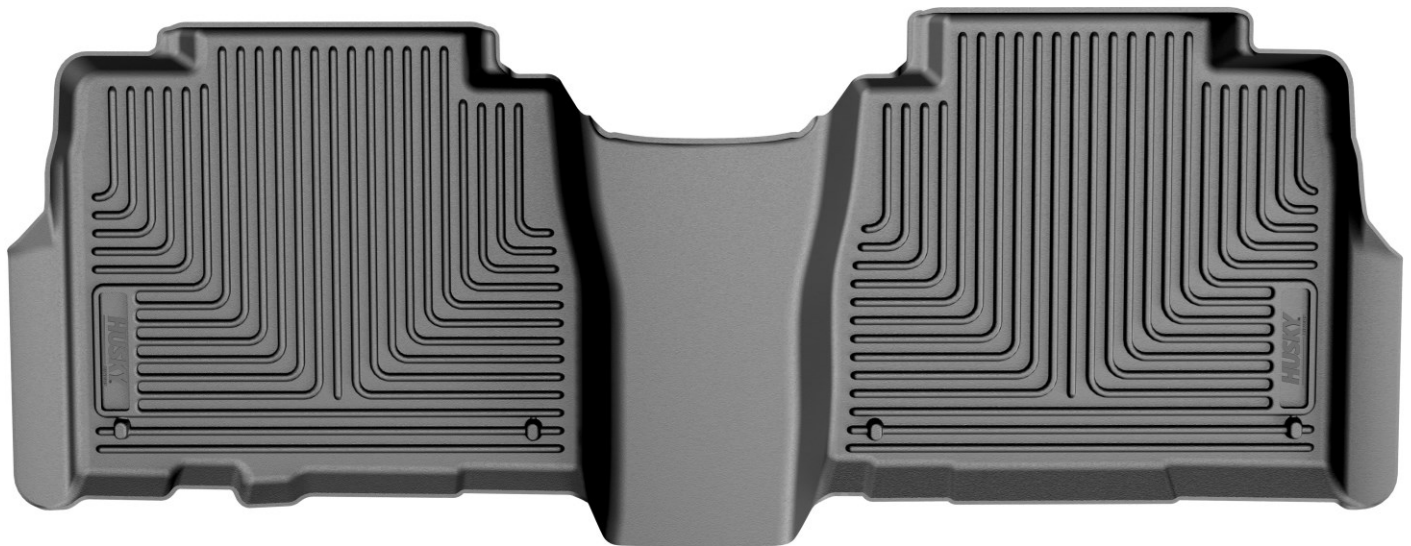
### USE AND INSTALLATION INSTRUCTIONS FOR YOUR 2<sup>ND</sup> SEAT FLOOR LINER

---

Thank you for selecting a Weatherbeater™ Floor Liner from Husky Liners. Your new second seat liner is custom molded to fit your specific vehicle. The liner is made to take the place of your factory floor mats. ***For correct fit, it is necessary to remove the factory floor mats before installing your new floor liners.*** However, do not remove the factory-installed carpeting.

Upon removal from the box your liner will not completely unroll and lay flat. This is normal and only temporary. Just place the liner on the floor or in the trunk of your vehicle with a weight in each corner (a book works well). After about 15 minutes, your liner will remain flat. In colder climates this “relaxing” may take longer; moving the liner to a heated area will accelerate the process.

Your liner is made from an engineering resin that is lightweight and extremely tough and durable. The easiest way to clean your liner is with a damp cloth or sponge. If using a cleaner, 409® or Glass Plus® work well. Use of Armor All®, Son-of-a-Gun® or similar items is discouraged as these products make the liner slick.



TO INSTALL YOUR SECOND SEAT LINER, FIRST MOVE YOUR FRONT ROW SEATS COMPLETELY FORWARD. THEN, INSTALL YOUR NEW LINER, POSITIONING IT IN THE VEHICLE AS SHOWN ABOVE. LASTLY, REPOSITION YOUR FRONT ROW SEATS AS DESIRED.