



I-Sheet Part #INS-2803930 Rev.-
#INS-2803931 Rev.-

Toyota Fender Flares Set of 4

Fender Flare Components and Hardware:



SW1-0036,
M6-.3 x 20mm Hex
Magni Black Screw,



NU1-0013,
#14 Black "U"
Spring Nut,



SW1-0067,
5/16 x 18 x 3/8"
SS Torx Screw,

POCKET STYLE ONLY



WA1-0012,
.320 x .700 x .03
SS Washer,

POCKET STYLE ONLY



NU1-0019,
5/16-18 Jam Fin.
Nylock Nut,

POCKET STYLE ONLY



SW1-0052,
T-45 Torx Bit,

POCKET STYLE ONLY



GP1-0025
Edge Trim



ET1-0002,
Edge Trim Tool,



Front Fender Flare



Rear Fender Flare



Front Bracket

Components and Hardware:

1. (SW1-0036) M6-.3 x 20mm Hex Magni Black Screw	(40)
2. (NU1-0013) #14 Black "U" Spring Nut	(4)
3. (SW1-0067) 5/16 x 18 x 3/8" SS Torx Screw	(34)
4. (WA1-0012) 320 x .700 x .03 SS Washer	(34)
5. (NU1-0019) 5/16-18 Jam Fin. Nylock Nut	(34)
6. (SW1-0052) T-45 Torx Bit	(1)
7. (GP1-0025) EX4008 Wiper Style Edge Trim	(350)
8. (ET1-0002) Edge Trim Tool	(1)
9. Front Fender Flare	(2)
10. Rear Fender Flare	(2)
11. Fender Flare Bracket	(2)

Tools for Installation:

- Utility Knife
- Vise Grips
- Socket Wrench
- 1/2" Wrench
- 5/16" Socket
- 10mm Socket

Toyota Fender Flares

PRIOR TO INSTALLATION

1

- A. Husky® only approves installing the flares according to these written instructions with the hardware provided. **WARNING:** Failure to install according to these instructions will invalidate the warranty. This includes, but is not limited to using alternative installation methods, hardware, or materials. **DO NOT USE:** Loctite, SuperGlue, or similar products on the hardware or the flares.
- B. **Fit:** Verify the fit of the flares to vehicle. (Some filing, sanding, or cutting may be necessary to ensure proper fit).
- C. **Painting:** (Optional) if paint is desired it must be done prior to installing flares on vehicle. Clean outer surface with a good grade degreaser. **DO NOT USE LACQUER THINNER OR ENAMEL REDUCER AS A DEGREASER.** Wipe outer surface thoroughly with a tack rag prior to paint. Application of plastic adhesion promoter for ABS plastic as per your paint system manufacturer's recommendations is required. Paint flares using a high quality enamel, or polyurethane automotive paint. If painting edge trim (not recommended), use a flex additive.
- D. **Performance:** Using larger Tires may increase the area required to turn the vehicle. Some Tire/Rim combinations may require lowering bump stops and or installing steering stops to prevent tire from contacting flare.
- E. **Exhaust System:** Modifications may be necessary to maintain a minimum 4" clearance between flares and exhaust pipes. (Exhaust gases should not vent directly onto flares)
- F. **Metal Protection:** All exposed fasteners and bare metal should be treated with rust resistant paint **BEFORE** installing flares. Spray inner fender wells with undercoating **AFTER** flare attachments have been completed.
- G. **Decals:** Flares may interfere with existing decals on vehicle. If you wish, remove decals prior to installation of flares.
- H. **Care & Cleaning:** Husky® fender flares are built to last; any detergent you use to wash your vehicle is sufficient to clean the flare. Do not use any harsh abrasive detergents.

PLEASE READ: Dirt and debris can become lodged between the fender flares and the vehicle's fenders, causing scratching and paint wear from vibration. Husky® is not responsible for any damage, and the installation of our fender flares is done with the buyer's understanding that this scratching and paint wear may occur.

3 YEAR LIMITED WARRANTY AGAINST ANY MANUFACTURING DEFECTS

- To claim a warranty, you must provide Proof of Purchase.

Toyota Fender Flares

Edge Trim Installation

2

- A) Peel two to three inches of red vinyl backing away from Edge Trim tape. Applying the adhesive side of the edge trim to the inner side of the flare, affix the edge trim to the top edge of the flare (the portion that comes in contact with the vehicle).
- B) Press edge trim into place along the top edge of the flare in one-foot increments, pulling red vinyl backing free as you continue to work your way around the top edge of the flare.



Flare Pocket Hardware Installation

3



Put a Washer (WA1-0029) on each Bolt (SW1-0087).

4



Put each Bolt/Washer combination through a pocket hole in the flare, Bolt head and Washer on the outside.

5



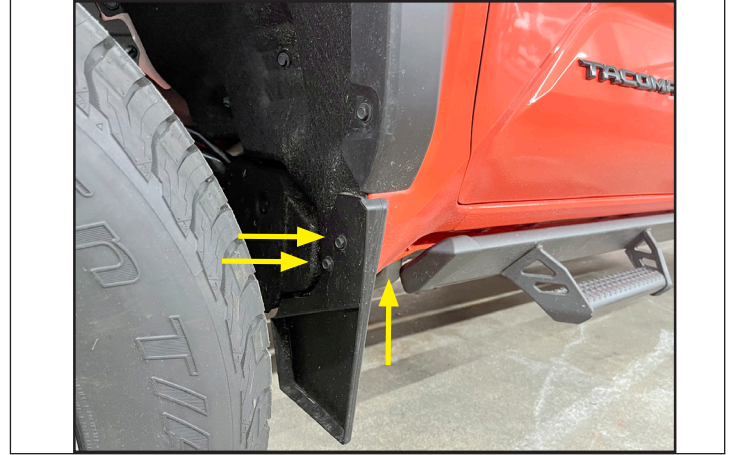
Place a Nut (NU1-0019) over the end of each Bolt and tighten, using a 1/2" wrench for the Nut and the supplied Torx Bit (SW1-0052) for the Bolt. Repeat for remaining pockets.

Toyota Fender Flares

Front Flare Installation Procedures

6

If factory mud flap is installed, remove (3) factory screws from the mud flap. Note: (2) of the screws are removed from underneath. Save screws for reinstallation.



7

Remove (7) factory screws.



8

Loosen screws one full turn.



Toyota Fender Flares

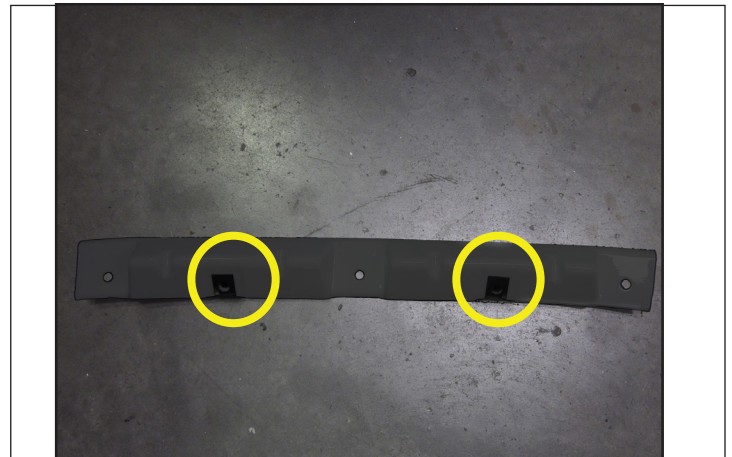
9

Remove flare by pulling part away from side of vehicle



10

Verify that (2) Clips (NU1-0013) are installed on supplied bracket.



11

Line up the holes in the inner piece with the (2) uppermost factory holes.



Toyota Fender Flares

12

Using two supplied screws (SW1-0036), attach bracket to wheel well. Tighten all screws.



13

Position flare on fender, pressing inward on the flare, line up the flare mounting holes with the mounting clips on the bracket. Install 2 supplied screws (SW1-0036) through the flare and into the clips on the bracket. Do not tighten.



14

Still holding flare to fender, install supplied screws (SW1-0036) into remaining mounting holes (9 places).



Toyota Fender Flares

15

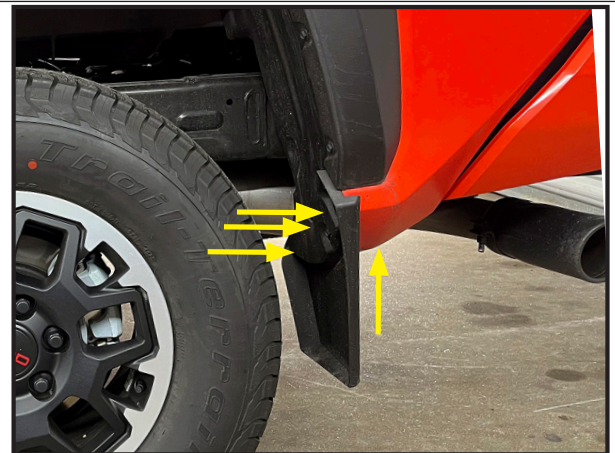
Tighten all screws. Installation Complete.



Rear Flare Installation Procedures

16

If factory mud flap is installed, remove (4) factory screws from the mud flap. Note: (2) of the screws are removed from underneath. Save screws for reinstallation.



17

Remove seven factory screws.
If there is no factory flare installed, go to Step 23.



Toyota Fender Flares

18

Remove flare by carefully pulling part away from side of vehicle.



19

Holding flare to fender, install supplied screws (SW1-0036) into mounting holes (9 places).



20

Tighten all screws. Installation complete.



Toyota Fender Flares

21

Using supplied Edge Trim Tool, seat edge trim against vehicle by hooking curved end under edge trim at one end of flare. Next, slide around outer edge of flare to the other end.



22

Using flat end of supplied Edge Trim Tool, seat edge trim against flare by inserting straight end between edge trim and flare at one end. Next, slide around entire edge to the other end.



Care and Cleaning

- Wash only with mild soap & dry with a clean cloth.



The material that your product is made from can be recycled. Please also consider recycling the packaging that your product came in.

Congratulations!

We take the utmost pride in our products and want you to enjoy years of satisfaction from your investment. We have made every effort to ensure that your product is top quality in terms of fit, durability, finish and ease of installation.

www.huskyliners.com

Phone: 800-344-8759

Email: customerservice@huskyliners.com

