



STEP 1 – PRIOR TO INSTALLATION

- A) Husky® only approves installing the flares according to these written instructions with the hardware provided. **WARNING:** Failure to install according to these instructions will invalidate the warranty. This includes, but is not limited to using alternative installation methods, hardware, or materials. **DO NOT USE:** Loctite, SuperGlue, or similar products on the hardware or the flares.
- B) **Fit:** Verify the fit of the flares to vehicle. (Some filing, sanding, or cutting may be necessary to ensure proper fit).
- C) **Painting:** (Optional) if paint is desired it must be done prior to installing flares on vehicle. Clean outer surface with a good grade degreaser. **DO NOT USE LACQUER THINNER OR ENAMEL REDUCER AS A DEGREASER.** Wipe outer surface thoroughly with a tack rag prior to paint. Application of plastic adhesion promoter for ABS plastic as per your paint system manufacturer's recommendations is required. Paint flares using a high quality enamel, or polyurethane automotive paint. If painting edge trim (not recommended), use a flex additive.
- D) **Performance:** Using larger Tires may increase the area required to turn the vehicle. Some Tire/Rim combinations may require lowering bump stops and or installing steering stops to prevent tire from contacting flare.
- E) **Exhaust System:** Modifications may be necessary to maintain a minimum 4" clearance between flares and exhaust pipes. (Exhaust gases should not vent directly onto flares)
- F) **Metal Protection:** All exposed fasteners and bare metal should be treated with rust resistant paint **BEFORE** installing flares. Spray inner fender wells with undercoating **AFTER** flare attachments have been completed.
- G) **Decals:** Flares may interfere with existing decals on vehicle. If you wish, remove decals prior to installation of flares.
- H) **Care & Cleaning:** Husky fender flares are built to last; any detergent you use to wash your vehicle is sufficient to clean the flare. Do not use any harsh abrasive detergents.

Ford Ranger SuperCrew Pocket Style® Fender Flares Set of 4

Set Part #2802949

Rev-1 1/2/2019

TOOLS FOR EASY INSTALLATION:

- Torx Drivers
- #2 Phillips Driver
- Needle Nose Pliers
- Grease Pencil
- Socket Wrench
- 1/2" Wrench

PLEASE READ: Dirt and debris can become lodged between the fender flares and the vehicle's fenders, causing scratching and paint wear from vibration. Husky Liners is not responsible for any damage, and the installation of our fender flares is done with the buyer's understanding that this scratching and paint wear may occur.

LIMITED LIFETIME WARRANTY AGAINST ANY MANUFACTURING DEFECTS

- To claim a warranty, you must provide Proof of Purchase.



The material that your product is made from can be recycled. Please also consider recycling the packaging that your product came in.



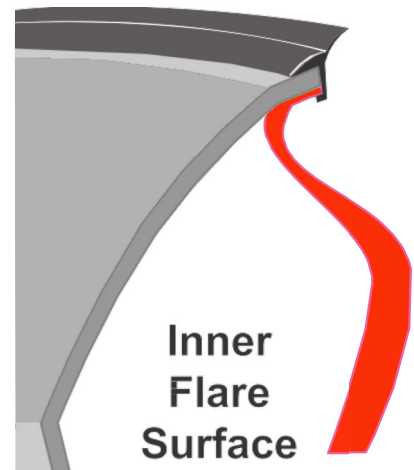
Included in Hardware Kit:

- | | | | | | | |
|---|--|---|--|---|---|---|
| 1. 
CL1-0005,
Dacromet "S"
Spring Clip,
2 pcs | 2. 
SW1-0050,
10 x 5/16 Phillips
Truss Screw,
2 pcs | 3. 
RV1-P008,
1/4" Panel
Retainer,
12 pcs | 4. 
MT1-0014,
1" x 1.5" x .01"
Black Mylar Tab,
2 pcs | 5. 
ET1-0002,
Edge Trim Tool,
1 pc | 6. 
GP1-0025,
EX4008 Wiper
Style Edge Trim,
340 inches | 7. 
SW1-0052,
T-45 Torx Bit,
1 pc |
| 8. 
SW1-0067,
5/16 x 18 x 3/8"
SS Torx Screw,
29 pcs | 9. 
WA1-0012,
.320 x .700 x .03
SS Washer,
29 pcs | 10. 
NU1-0019,
5/16-18 Jam Fin.
Nylock Nut,
29 pcs | | | | |

If your flares already have the edge trim and pocket hardware installed, skip to Front Flare Installation Step 4.

STEP 2 - EDGE TRIM INSTALLATION

- A)** Peel two to three inches of red vinyl backing away from Edge Trim (GP1-0025) tape. Applying the adhesive side of the edge trim to the inner side of the flare, affix the edge trim to the top edge of the flare (the portion that comes in contact with the vehicle).
- B)** Press edge trim into place along the top edge of the flare in one-foot increments, pulling red vinyl backing free as you continue to work your way around the top edge of the flare.



Pocket Hardware Installation:



Put a Washer (WA1-0012) on each Bolt (SW1-0067).

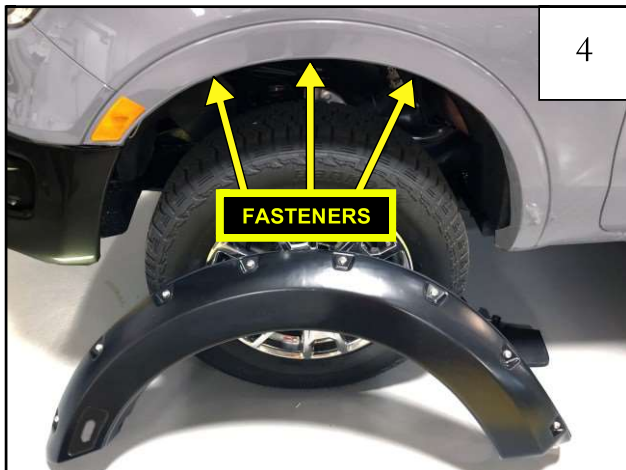


Put each Bolt/Washer combination through a pocket hole in the flare, Bolt head and Washer on the outside.



Place a Nut (NU1-0019) over the end of each Bolt and tighten, using a 1/2" wrench for the Nut and the supplied Torx Bit (SW1-0052) for the Bolt. Repeat for remaining pockets.

Front Flare Installation Procedures (Driver's Side):



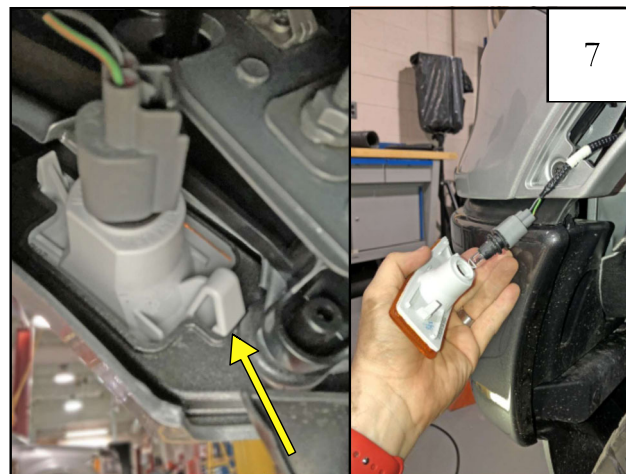
Remove (3) factory installed plastic fasteners from the driver side front wheel well using a phillips screwdriver. Needle nose pliers may be needed to extract the fasteners.



Remove (1) factory installed screw from the rear of the fender trim using a T-25 Torx driver. The screw will be re-used to install the front flare.



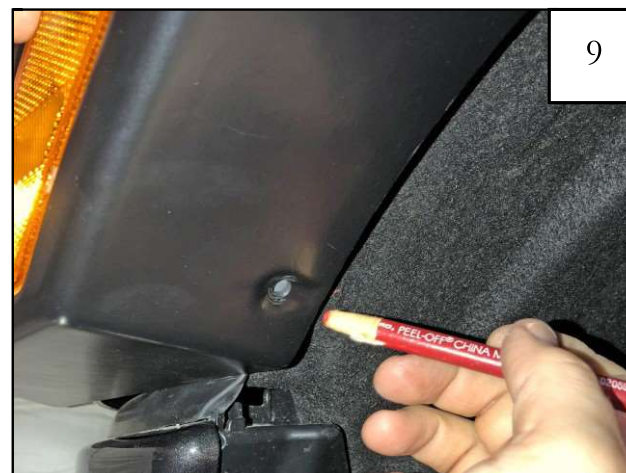
Pull back the fender liner near the front of the fender and locate the turn signal assembly and wiring.



Squeeze the lower tab on the back of the turn signal assembly and remove from the truck. Carefully turn the wiring harness counter-clockwise and separate the bulb/wiring harness from the turn signal assembly.



Install the turn signal assembly into the front driver side flare.



While holding the flare up into place, mark the location of the front hole on the fender liner using a grease pencil.



10

Install (1) black mylar tab (MT1-0014) around the edge of the fender trim aligned with the grease pencil marking.



11

Install (1) "S" spring clip (CL1-0005) over the black mylar tab, centered with the grease pencil marking.



12

Reconnect the turn signal wiring connector and set the flare in place. Hold flare to vehicle and install (3) 1/4" panel retainers (RV1-P008) into the wheel well holes indicated. Press firmly on the flare while installing fasteners.



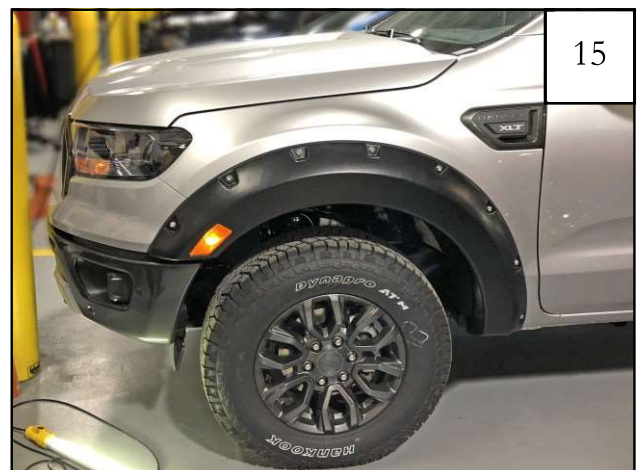
13

Reinstall (1) T-25 Torx screw previously removed from rear of the flare in Step 5.



14

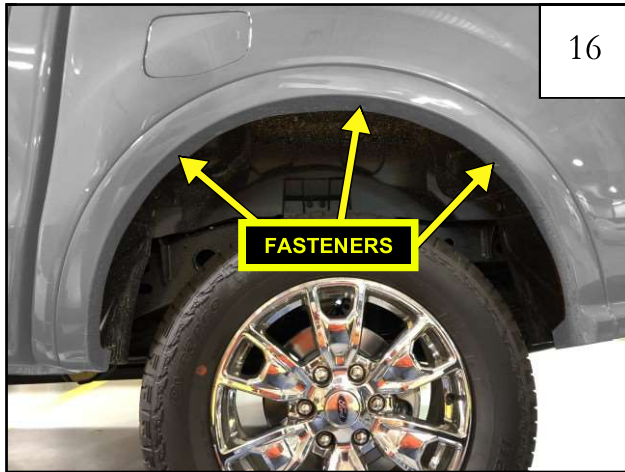
Install (1) truss screw (SW1-0050) through the front hole in the flare into the "S" spring clip using a #2 Phillips screwdriver.



15

Completed front flare installation.

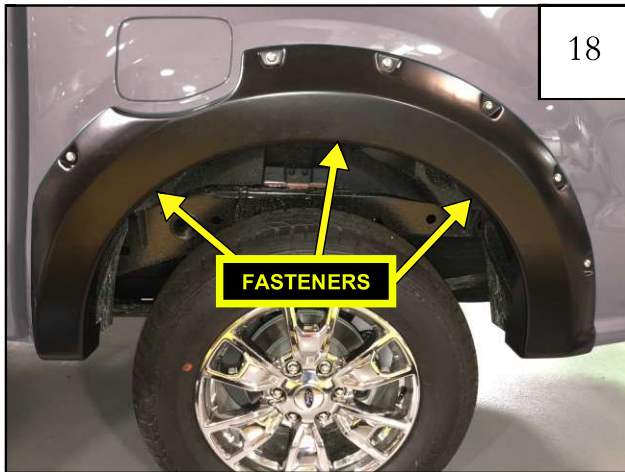
Rear Flare Installation Procedures (Driver's Side)



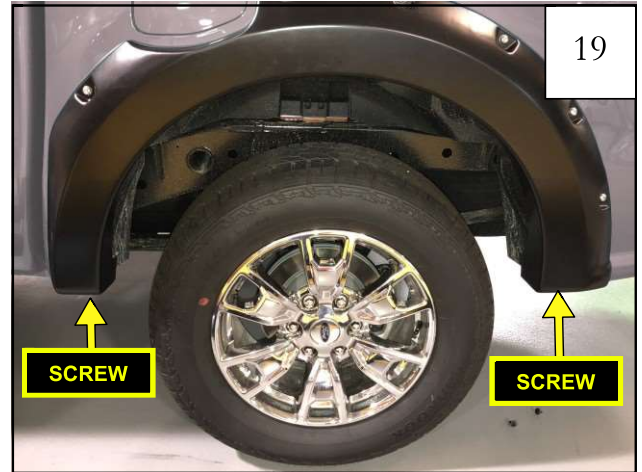
Remove (3) factory installed plastic fasteners from the driver side rear wheel well using a phillips screwdriver. Needle nose pliers may be needed to extract the fasteners.



Remove (2) factory installed screws from under the fender trim using a T-25 Torx driver. The screws will be re-used to install the rear flare.



Hold flare to vehicle and install (3) 1/4" panel retainers (RV1-P008) into the wheel well holes indicated. Press firmly on the flare while installing fasteners.

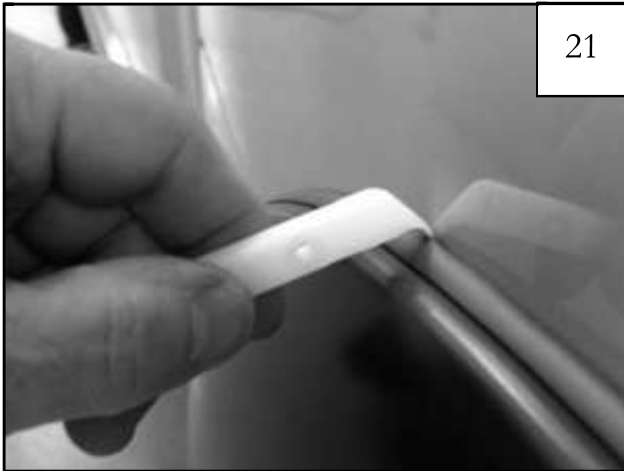


Reinstall (2) T-25 Torx screws previously removed from rear flare in Step 17.



Completed rear flare installation.

Edge Trim Tool Procedures:



Using supplied Edge Trim Tool (ET1-0002), seat edge trim against vehicle by hooking curved end under edge trim at one end of flare. Next, slide around outer edge of flare to the other end.



Using flat end of supplied Edge Trim Tool (ET1-0002), seat edge trim against flare by inserting straight end between edge trim and flare at one end. Next, slide around entire edge to the other end.