



WEATHERBEATER™ FLOOR LINERS

PT #26741

USE AND INSTALLATION INSTRUCTIONS FOR YOUR CARGO LINER

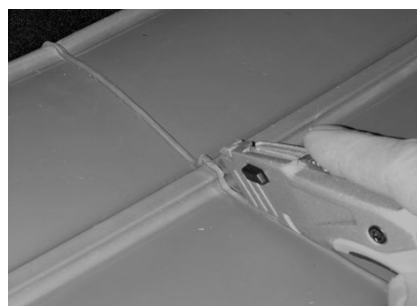
Thank you for selecting a Weatherbeater™ Cargo Liner from Husky Liners. Your new cargo liner is custom fit and is manufactured using an engineering resin that is lightweight and extremely tough and durable. The easiest way to clean your liner is with a damp cloth or sponge. If using a cleaner, 409® or Glass Plus, work well. Do not use Armor All®, Son-of-a-Gun® or similar items as these products make the liner slick.

CARGO LINER INSTALLATION INSTRUCTIONS

1. Upon removal from the box your liner will not completely unfold and lay flat. This is normal and only temporary. Just place the liner on the floor or in the cargo area of your vehicle with a weight in each corner (a book works well). After about 15 minutes, your liner will remain flat. In colder temperatures this “relaxing” may take longer; moving the liner to a heated area will speed the process. At this time check the back of the liner to make sure all of the double-sided Velcro pads are secured to the 2-inch Velcro pads that are adhered to the liner.



2. As boxed, the liner is not “split” to allow the 3rd row seat backs to fold independently. If you wish to have this functionality, the seat back portion can be split down the middle as shown in the photo. There is a trim groove molded in the center of the liner to guide trimming.



3. Where applicable, feed the strap through the liner that is used to lower your third row seats. Vehicles with power folding rear seats will not have the straps.



WEATHERBEATER™ FLOOR LINERS

PT #26741



4. Install the liner as shown. Before installing, fold the 3rd row seat flat. Next, position the liner in the portion of the cargo area behind the wheel wells, then extend the liner over the backs of the stowed 3rd row seat. You may need to press the liner down to fully seat the Velcro pads in place.

5. The first time the rear seat backs are moved to the upright position, move the seats slowly taking care to ensure the accordion section of the liner folds outward as shown. This may need to be assisted from the backside.

6. The liner at this point is fully installed and is ready to use. If the liner needs to be removed, grab the rectangular Velcro patches and hold them firmly in place as you pull the liner from the seat. This Velcro piece is intended to stay attached to the seat back and cargo floor to reduce wear from the liner being installed and reinstalled for cleaning.





WEATHERBEATER™ FLOOR LINERS

PT #26741

