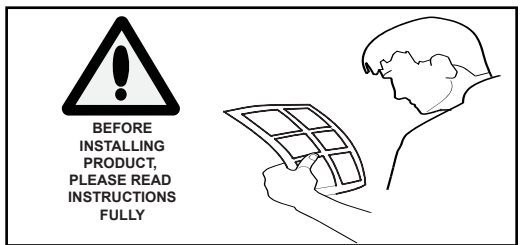
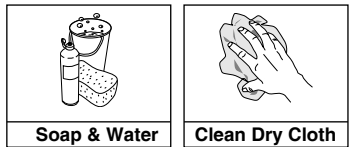


# EGR

## INSTALLATION INSTRUCTIONS

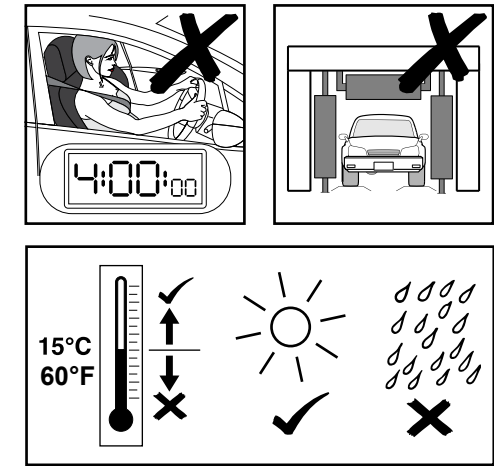


### Tools Required



### Cleaning Notes

- Spray with a firm water spray to remove any loose dirt.
- Wash with water, detergent and a soft cloth or sponge.
- Do not use petroleum based solvents or abrasives.
- Do not drive for four hours after installation.
- Do not use automatic car wash.



• For Technical Support/Warranty Information please call: 800-757-7075

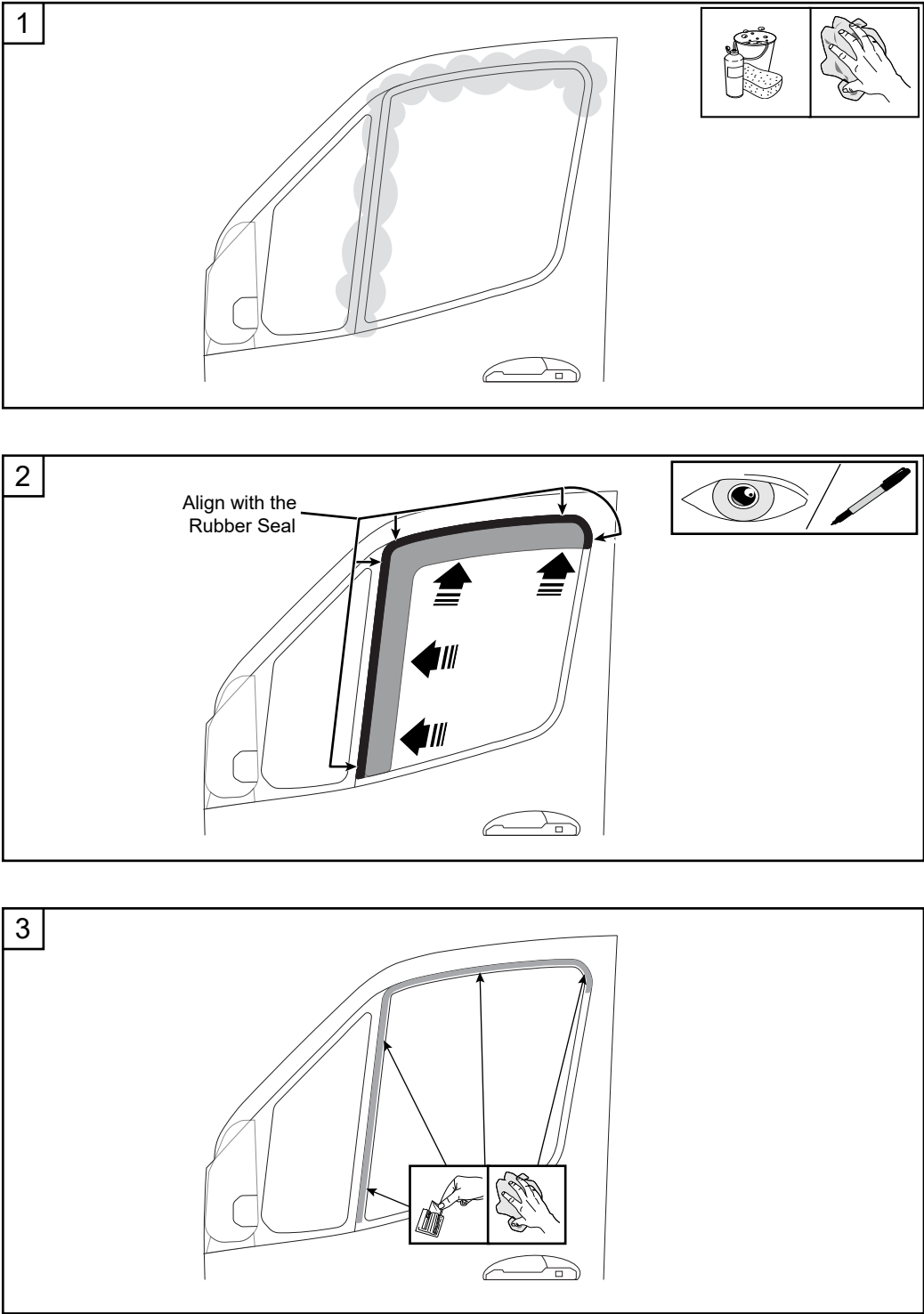
- 1•Clean the front door frames with a mild car wash soap and water solution. Dry the door frames using a clean soft cloth.

- 2•Wind the front window down and trial fit the weathershield onto the front door frame by aligning the edge of the weathershield with the edge of the rubber seal of the window.

Note the tape attachment areas.

- 3•Clean the tape attachment areas on the rubber seal thoroughly with the alcohol prep pad provided. Wipe dry with a clean, dry cloth.

**IMPORTANT:**  
Door frame must be clean prior to installing part on the door frame. Failure to clean will result in reduced tape adhesion to the door frame.



# EGR

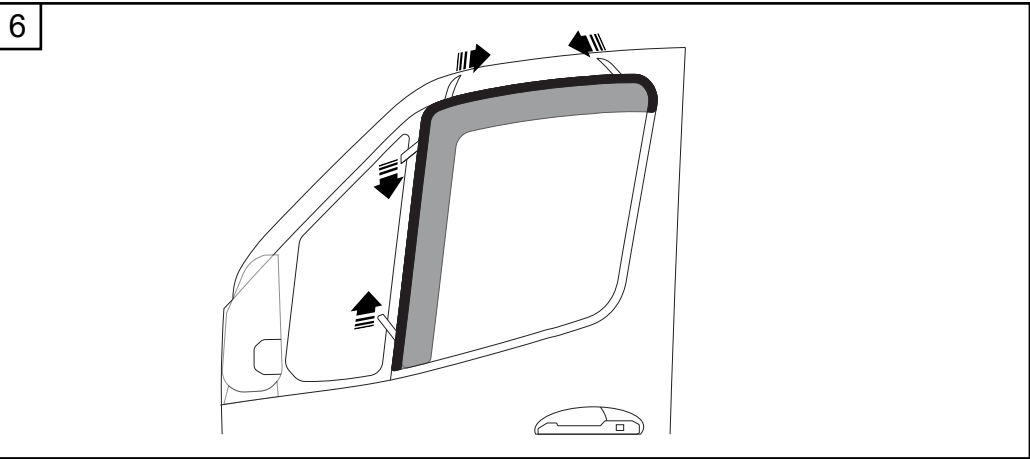
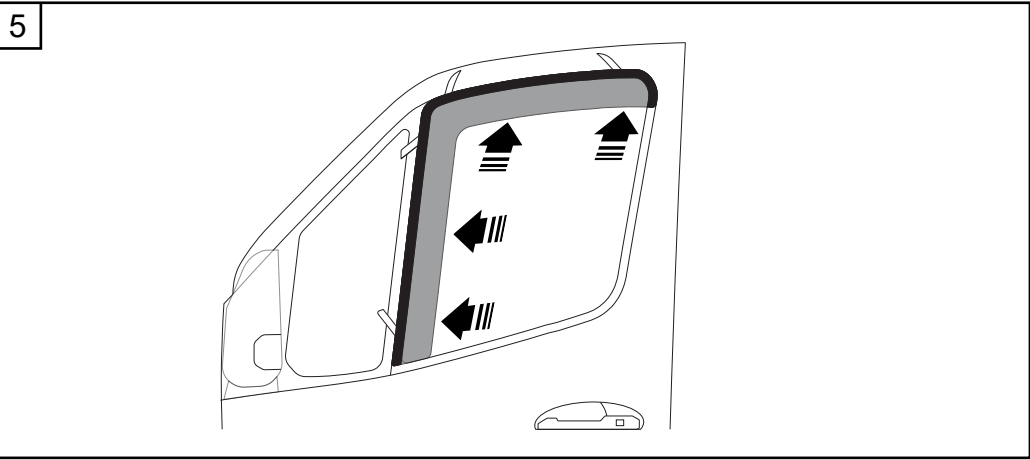
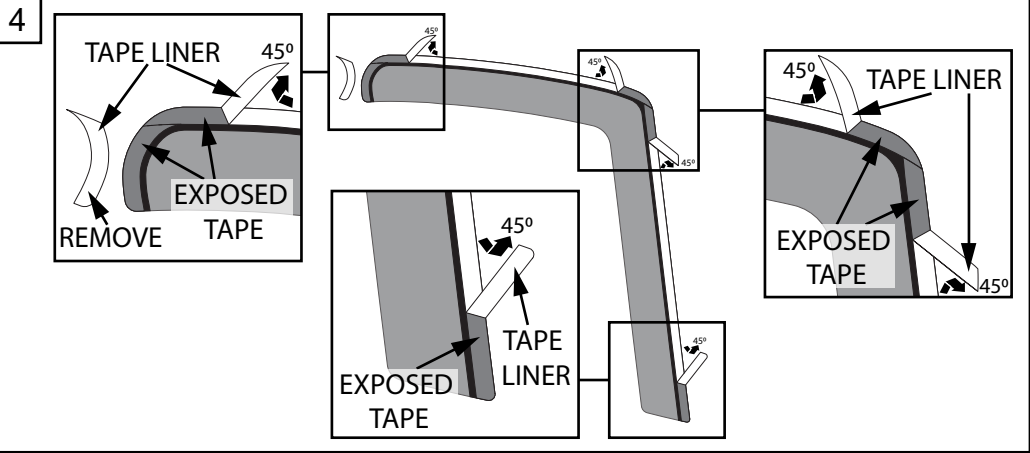
## INSTALLATION INSTRUCTIONS

4•On the weathershield peel back approximately 50mm (2") of the protective tape liner on the backing tape from each of the tape sections and fold the protective liner at 45° to the outside of the weathershield. On the rear end of the weathershield remove the tape liner completely.

**IMPORTANT:**  
Do not touch the exposed surface of the backing tape.

5•Position the weathershield on the door frame. Double check the positioning of the weathershield as shown in step2, then apply light pressure to the tape areas.

6•Slowly peel the remaining protective tape liner away by pulling on the exposed ends of liner, and apply firm pressure around the exposed attachment areas.



**EGR** INSTALLATION  
INSTRUCTIONS

7•Using a clean, soft cloth, firmly rub down over the attachment areas 4 times to ensure maximum adhesion.

Repeat the previous steps for right hand side to complete the installation of the weathershields.

7

